



User Guide

LG CAM Plus

CBG-700

Compatible with G5 worldwide except
Korea, Canada and AT&T-powered G5

ENGLISH

REV 1.0 IND

All rights reserved. LG Electronics Inc., 2016

Note: Please read all information carefully prior to using the LG CAM Plus in order to enjoy the best performance and prevent damage to the product.



Disposal of your old appliance (as per e-waste Rules)

1 When this crossed out wheeled bin symbol is depicted on the product and its operator's manual, it means the product is covered by the e-waste Management and Handling Rules, 2011 and are meant to be recycled, dismantled, refurbished or disposed off.

2 Do's

- a. The product is required to be handed over only to the authorized recycler for disposal.
- b. Keep the product in isolated area, after it becomes non-functional/unreparable so as to prevent its accidental breakage.

Don't

- a. The product should not be opened by the user himself/herself, but only by authorized service personnel.
 - b. The product is not meant for re-sale to any unauthorized agencies/scrap dealer/kabariwalah.
 - c. The product is not meant for mixing into household waste stream.
 - d. Do not keep any replaced spare part(s) from the product in exposed area.
- 3** Any disposal through unauthorized agencies/person will attract action under Environment (Protection) Act 1986.
- 4** This product is complied with the requirement of Hazardous Substances as specified under Rule 13 (1) & (2) of the E-Waste (Management & Handling) Rules, 2011.
- 5** To locate a nearest collection centre or call for pick-up (limited area only) for disposal of this appliance, please contact Toll Free No. 1800-180-9999 for details. All collection centre and pick up facilities are done by third parties with LG Electronics India Pvt. Ltd. Merely as a facilitator. For more detailed information, please visit : <http://www.lge.com/in>.

Product Overview

The LG CAM Plus is a camera grip and extra battery that can be attached to the bottom of your LG G5.

- With the LG CAM Plus, you can use your LG G5 like a digital camera. Use it to take pictures by pressing the shutter button and zooming in and out. Half-press the shutter button to use the half-shutter function.
- The LG CAM Plus is equipped with a 1,200 mAh battery that can be used as extra battery when using the camera.

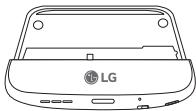
Important Safety Information

- Always use genuine products. Do not use this product for any unintended purpose.
- Using or connecting products that are not genuine may shorten the product's longevity or cause an explosion. Doing so may also damage the product and thereby voids the service warranty.
- If you insert a module that is not compatible with your service provider, for example, a module bought from another service provider or in an area that is not covered by your service provider, your device does not operate normally.
- Do not disassemble the product or allow anything to impact it. Doing so may cause an electrical shock, short circuit or fire.
- Applying heavy pressure to the product may damage it.
- Some functions of this product may be damaged, or its appearance may be altered or impaired, if it is bent or crushed and not repaired right away.
- In order to prevent damage, be careful not to drop the product on a hard surface or subject it to severe shock.
- Keep the product away from water, alcohol, benzene, etc.
- Do not use, or store the product, in extreme temperatures. Do not leave the product in direct sunlight for long periods of time. Doing so may cause damage or an explosion.
- Do not use alcohol, benzene, thinners or detergents to clean the product. Doing so may cause a fire.
- Use a soft cloth to wipe the product.
- Do not place the product near metal objects, such as necklaces, keys, coins, nails, or clocks. In the case of a short-circuit, there is also the risk of an explosion.

- Keep the product out of the reach of small children and pets. Do not put the product in your mouth or subject it to severe shock. There is a risk of electric shock, an explosion, or suffocation.
- Do not connect or insert conductive materials (metal pieces, pencil leads, etc.) into the connectors.
- Do not cover or wrap the product with a blanket while using the product.
- The product may become hot after long periods of use. Avoid touching the product when it becomes hot as it may cause a low-temperature burn.
- Do not dispose of the product as household waste. Doing so may cause a fire or damage the environment.
- Risk of explosion if battery is replaced by an incorrect type. Dispose of used batteries according to the instructions.
- For your safety, do not remove the battery incorporated in the product
- If you need to replace the battery, take it to the nearest authorized LG Electronics service point or dealer for assistance.
- Li-ion Battery is hazardous component which can cause injury.
- Battery replacement by non-qualified professional can cause damage to your device.
- Always unplug the charger from the wall socket after the device is fully charged to save unnecessary power consumption of the charger.



Product Components



LG CAM Plus

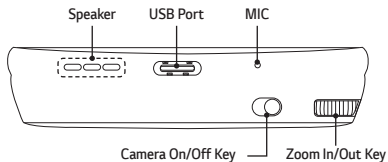


User Guide

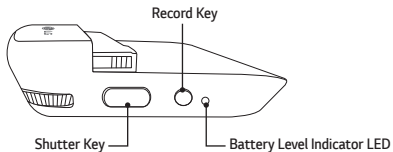
- If there are any missing components, contact the retailer where you purchased the product.
- Some items are subject to change without prior notice depending on the circumstances.
- The appearance and specifications of the product are subject to change without prior notice to improve performance.

Product Description

Front



Side



Some functions may not be available depending on the product specifications.

Connections

Inserting the Battery

1 Align the arrows on both the battery and the module and firmly connect the battery terminals to the module.



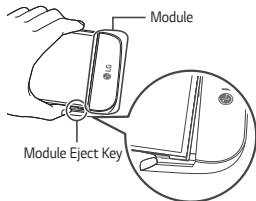
2 Align the battery with the lower edge and carefully slide the module back into the device.



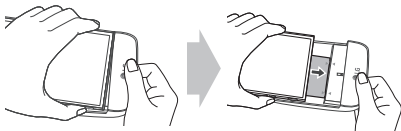
- Never press the Module Eject Key when inserting the module into the device.
- When inserting the battery into the device, make sure the battery is attached to the module.

Removing the Battery

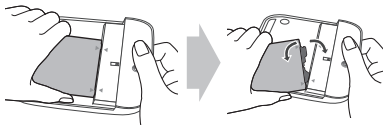
1 Press the Module Eject Key to partly eject the module from the device.



2 Grab the middle of the ejected module and pull it out.



3 Hold the battery and module with both hands and separate them from one another in an outward arc (as indicated below) to disconnect the battery terminals.



- Do not detach the module while it is in use.
- Immediately attach the module to the main unit if it becomes loose or is detached during use.
- Be careful to not hurt your hands or fingers when attaching or detaching the module.
- Be careful to not be injured by the edges of the product or the module.
- Make sure the battery and the module are properly inserted. Otherwise, the product may be damaged or fail to turn on.
- Failing to follow the instructions in this user guide may damage the product.

Instructions

- This product will not operate normally if your G5 and LG CAM Plus are supported by different countries or operators.
- The LG CAM Plus cannot be operated while the USB is connected (data communication and charging are still available).
- If you press the Camera On/Off, Shutter, or Recording buttons, the low-capacity battery in the LG CAM Plus will charge your LG G5 for some time. The charging feature is not available when the LG G5's battery is completely empty (power off).
- OTG devices that are connected to the LG CAM Plus will not be recognized (OTG is not supported).
- The product may be not compatible with camera apps available on online marketplaces.

LED Notifications

- The LED light will turn red while charging, and it will turn green when fully charged.
- After the LG CAM Plus is connected to the phone, the Battery Level Indicator LED will turn red if the battery level is at 10% or less, and the LED will blink if the battery level is at 5% or less. (The LED will be off if it is at 11% or more.)

About Firmware Upgrades


- Firmware upgrades are available through CAM Plus Manager, which can be downloaded and installed from Google Play™ Store (Supported OS: Android™ 6.0 [Marshmallow OS] or above).
- Firmware upgrade is also available using the LG Friends Manager app.


Information about Burst Shot feature support

The following Burst Shot feature using the LG CAM Plus will be made available through a future G5 software upgrade.

- **Burst Shot**

You can take continuous shots to create moving photos.

Tap and hold  on the auto mode screen, or tap and hold the Shutter key on the LG CAM Plus.

Continuous shots are taken at a fast speed while  or the Shutter key is held down.

Limited Warranty

SUBJECT TO THE CONDITIONS OF THIS LIMITED WARRANTY, LG ELECTRONICS WARRANTS THIS PRODUCT TO BE FREE FROM DEFECTS IN DESIGN, MATERIAL AND WORKMANSHIP AT THE TIME OF ITS ORIGINAL PURCHASE BY A CONSUMER, AND FOR A SUBSEQUENT PERIOD OF THREE (3) MONTHS. SHOULD YOUR PRODUCT NEED WARRANTY SERVICE, PLEASE RETURN IT TO THE DEALER FROM WHOM IT WAS PURCHASED OR CONTACT YOUR LOCAL LG ELECTRONICS CONTACT CENTRE TO GET FURTHER INFORMATION.

Customer Care

For any query related to after sales service, you may please contact us on the number listed below.

24 x 7 CUSTOMER CARE



1800-315-9999
1800-180-9999
(Toll Free)



5757554
(Send SMS)



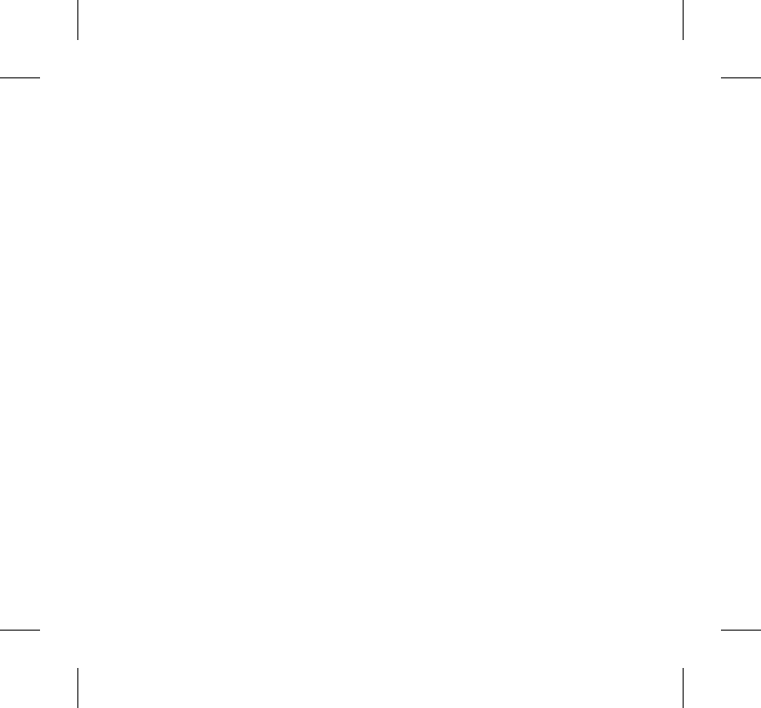
www.lg.com/in/support



www.facebook.com/lgindiapage
www.twitter.com/LGIndiaTweets

LG Electronics India. Ltd.

Regd. office : A Wing (3rd Floor) D-3, District Center
Saket, New Delhi-110017





www.lg.com

Any modifications or changes to this manual due to typographical errors or inaccuracies of stated information shall only be made by LG Electronics Inc.