

ENGLISH

Specification

Power requirements

- Refer to the main label.

Power consumption

- Refer to the main label.

Dimensions (W x H x D): Approx. 650.0 mm x 63.0 mm x 99.0 mm

Bus Power Supply (USB): 5 V  500 mA

Amplifier (Total RMS Output power): 50 W RMS

Open Source Software Notice Information

To obtain the source code that is contained in this product, under GPL, LGPL, MPL, and other open source licenses that have the obligation to disclose source code, and to access all referred license terms, copyright notices and other relevant documents, please visit <https://opensource.lge.com>.

LG Electronics will also provide open source code to you on CD-ROM for a charge covering the cost of performing such distribution (such as the cost of media, shipping, and handling) upon email request to opensource@lge.com.

This offer is valid to anyone in receipt of this information for a period of three years after our last shipment of this product.

LG Soundbar

Wireless Soundbar

Simple Manual

S20A

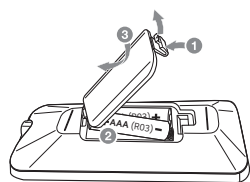
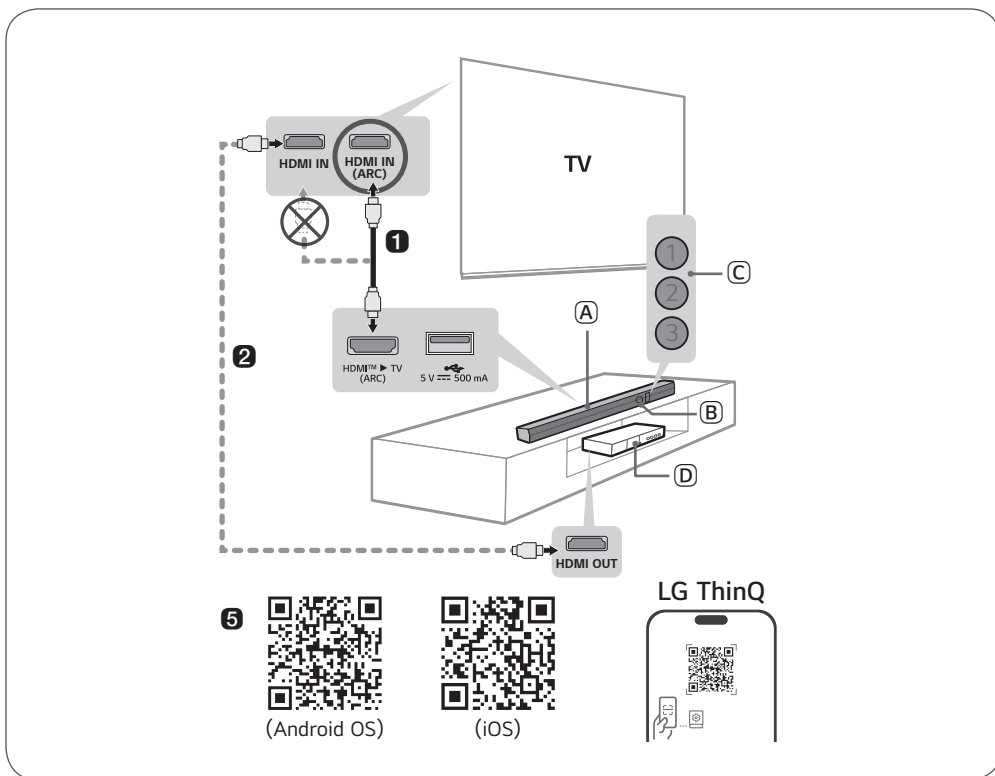


COV37659314

2412_Rev01

www.lg.com

Copyright © 2025 LG Electronics Inc.
All Rights Reserved.



Replacement of Battery

ENGLISH Installing and Using the Product

Please read this manual carefully before operating your set and retain it for future reference. To view the instructions of advanced features, visit <http://www.lg.com> or scan QR code and then download Owner's Manual. Some of the content in this manual may differ from your product.



- (A) Soundbar
- (B) Remote Control Receiver
- (C) Status LED (①②③)
- (D) External Device - (Blu-ray player, game console, etc.)

○ : On / ● : Off / ◐ : Blink

Red blinking	White blinking	White	White	Purple
Power on Power off	Bluetooth ready	Bluetooth	HDMI ARC	USB

- 1** Connect the soundbar to your TV via an HDMI cable.
- 2** If you are using an external device (ex. Set-top box, Blu-ray player, game console, etc.), connect it to the TV via an HDMI cable.
 - ⓘ If necessary, purchase HDMI cables, or a USB extension cable to connect the soundbar.
- 3** Connect to power and then press the **Power** (⏻) button to turn on the soundbar.
- 4** Connecting the product to your smartphone via Bluetooth
 - 1** Tap the **Settings** (⚙️) button on your smartphone and select **Bluetooth**. Turn on the **Bluetooth** function. (Off > On)
 - 2** Press the **Bluetooth pair** (🔗) button. After a moment, LED1 and LED2 blink white.
 - 3** Find and select the Soundbar on your smartphone. The product should appear as "LG S20A(XX)".
 - 4** When the product is connected to your smartphone via **Bluetooth**, LED1 and LED2 light up white.
- 5** Connecting to the LG ThinQ app
 - 1** Install the **LG ThinQ app** on Google Play or the App Store.
 - 2** Run the **LG ThinQ app** and follow the instructions.
 - 3** The product will connect to your smartphone and you can control the product with **LG ThinQ app**.

- Design and specifications are subject to change without notice.
- Google Play is a trademark of Google LLC.

HDMI™
HIGH-DEFINITION MULTIMEDIA INTERFACE