



OWNER'S MANUAL

Safety and Reference

LED TV*

* LG LED TV applies LCD screen with LED backlights.

Please read this manual carefully before operating your set
and retain it for future reference.



* M F L 7 1 6 9 9 3 0 2 *

(2005-REV01)

www.lg.com

Copyright © 2020 LG Electronics Inc. All Rights Reserved.

Warning! Safety instructions



CAUTION
RISK OF ELECTRIC SHOCK
DO NOT OPEN



CAUTION : TO REDUCE THE RISK OF ELECTRIC SHOCK, DO NOT REMOVE COVER (OR BACK). NO USER-SERVICEABLE PARTS INSIDE. REFER TO QUALIFIED SERVICE PERSONNEL.



This symbol is intended to alert the user to the presence of uninsulated "dangerous voltage" within the product's enclosure that may be of sufficient magnitude to constitute a risk of electric shock to persons.



This symbol is intended to alert the user to the presence of important operating and maintenance (servicing) instructions in the literature accompanying the appliance.

WARNING : TO REDUCE THE RISK OF FIRE AND ELECTRIC SHOCK, DO NOT EXPOSE THIS PRODUCT TO RAIN OR MOISTURE.

- TO PREVENT THE SPREAD OF FIRE, KEEP CANDLES OR OTHER ITEMS WITH OPEN FLAMES AWAY FROM THIS PRODUCT AT ALL TIMES.
- **Do not place the TV and/or remote control in the following environments:**
 - Keep the product away from direct sunlight.
 - An area with high humidity such as a bathroom
 - Near any heat source such as stoves and other devices that produce heat.
 - Near kitchen counters or humidifiers where they can easily be exposed to steam or oil.
 - An area exposed to rain or wind.
 - Do not expose to dripping or splashing and do not place objects filled with liquids, such as vases, cups, etc. on or over the apparatus (e.g., on shelves above the unit).
 - Near flammable objects such as gasoline or candles, or expose the TV to direct air conditioning.
 - Do not install in excessively dusty places.

Otherwise, this may result in fire, electric shock, combustion/explosion, malfunction or product deformation.

• Ventilation

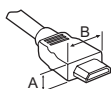
- Install your TV where there is proper ventilation. Do not install in a confined space such as a bookcase.
- Do not install the product on a carpet or cushion.
- Do not block or cover the product with cloth or other materials while unit is plugged in.
- Take care not to touch the ventilation openings. When watching the TV for a long period, the ventilation openings may become hot.
- Protect the power cord from physical or mechanical abuse, such as being twisted, kinked, pinched, closed in a door, or walked upon. Pay particular attention to plugs, wall outlets, and the point where the cord exits the device.
- Do not move the TV whilst the Power cord is plugged in.
- Do not use a damaged or loosely fitting power cord.
- Be sure to grasp the plug when unplugging the power cord. Do not pull on the power cord to unplug the TV.
- Do not connect too many devices to the same AC power outlet as this could result in fire or electric shock.
- **Disconnecting the Device from the Main Power**
 - The power plug is the disconnecting device. In case of an emergency, the power plug must remain readily accessible.
- Do not let your children climb or cling onto the TV. Otherwise, the TV may fall over, which may cause serious injury.
- **Outdoor Antenna Grounding** (Can differ by country):
 - If an outdoor antenna is installed, follow the precautions below. An outdoor antenna system should not be located in the vicinity of overhead power lines or other electric light or power circuits, or where it can come in contact with such power lines or circuits as death or serious injury can occur.

- **Grounding** (Except for devices which are not grounded.)
 - TV with a three-prong grounded AC plug must be connected to a three-prong grounded AC outlet. Ensure that you connect the earth ground wire to prevent possible electric shock.
- Never touch this apparatus or antenna during a lightning storm. You may be electrocuted.
- Make sure the power cord is connected securely to the TV and wall socket if not secured damage to the Plug and socket may occur and in extreme cases a fire may break out.
- Do not insert metallic or inflammable objects into the product. If a foreign object is dropped into the product, unplug the power cord and contact the customer service.
- Do not touch the end of the power cord while it is plugged in. You may be electrocuted.
- **If any of the following occur, unplug the product immediately and contact your local customer service.**
 - The product has been damaged.
 - If water or another substance enters the product (like an AC adapter, power cord, or TV).
 - If you smell smoke or other odors coming from the TV
 - When lightning storms or when unused for long periods of time. Even the TV is turned off by remote control or button, AC power source is connected to the unit if not unplugged in.
- Do not use high voltage electrical equipment near the TV (e.g., a bug zapper). This may result in product malfunction.
- Do not attempt to modify this product in any way without written authorization from LG Electronics. Accidental fire or electric shock can occur. Contact your local customer service for service or repair. Unauthorized modification could void the user's authority to operate this product.
- Use only an authorized attachments / accessories approved by LG Electronics. Otherwise, this may result in fire, electric shock, malfunction, or product damage.
- Never disassemble the AC adapter or power cord. This may result in fire or electric shock.
- Handle the adapter carefully to avoid dropping or striking it. An impact could damage the adapter.
- To reduce the risk of fire or electrical shock, do not touch the TV with wet hands. If the power cord prongs are wet or covered with dust, dry the power plug completely or wipe dust off.

- **Batteries**
 - Store the accessories (battery, etc.) in a safe location out of the reach of children.
 - Do not short circuit, disassemble, or allow the batteries to overheat. Do not dispose of batteries in a fire. Batteries should not be exposed to excessive heat.
 - Caution : Risk of fire or explosion if the battery is replaced by an incorrect type.
- **Moving**
 - When moving, make sure the product is turned off, unplugged, and all cables have been removed. It may take 2 or more people to carry larger TVs. Do not press or put stress on the front panel of the TV. Otherwise, this may result in product damage, fire hazard or injury.
- Keep the packing anti-moisture material or vinyl packing out of the reach of children.
- Do not allow an impact shock, any objects to fall into the product, and do not drop anything onto the screen.
- Do not press strongly upon the panel with a hand or a sharp object such as a nail, pencil, or pen, or make a scratch on it. It may cause damage to screen.
- **Cleaning**
 - When cleaning, unplug the power cord and wipe gently with a soft/dry cloth. Do not spray water or other liquids directly on the TV. Do not clean your TV with chemicals including glass cleaner, any type of air freshener, insecticide, lubricants, wax (car, industrial), abrasive, thinner, benzene, alcohol etc., which can damage the product and/or its panel. Otherwise, this may result in electric shock or product damage.

Preparing

- If the TV is turned on for the first time after it was shipped from the factory, initialization of the TV may take a few minutes.
- Image shown may differ from your TV.
- Your TV's OSD (On Screen Display) may differ slightly from that shown in this manual.
- The available menus and options may differ from the input source or product model that you are using.
- New features may be added to this TV in the future.
- The device must be easily accessed to a location outlet near the access. Some devices are not made by turning on / off button, turning off the device and unplugging the power cord.
- The items supplied with your product may vary depending on the model.
- Product specifications or contents of this manual may be changed without prior notice due to upgrade of product functions.
- For an optimal connection, HDMI cables and USB devices should have bezels less than 10 mm thick and 18 mm width. Use an extension cable that supports USB 2.0 if the USB cable or USB memory stick does not fit into your TV's USB port.



* $A \leq 10 \text{ mm}$

* $B \leq 18 \text{ mm}$

- Use a certified cable with the HDMI logo attached.
- If you do not use a certified HDMI cable, the screen may not display or a connection error may occur.
- Recommended HDMI Cable Types
 - Ultra High Speed HDMI[®]/™ cable (3 m or less)

Separate Purchase

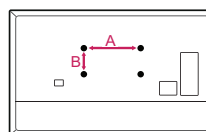
Separate purchase items can be changed or modified for quality improvement without any notification. Contact your dealer to buy these items. These devices only work with certain models.

The model name or design may be changed depending on the upgrade of product functions, manufacturer's circumstances or policies.

Wall Mounting Bracket

(Depending on model)

Make sure to use screws and wall mount bracket that meet the VESA standard. Standard dimensions for the wall mount kits are described in the following table.



Model	32/43LN56* 43/50/55UN70*	65UN70*
VESA (A x B) (mm)	200 x 200	400 x 200
Standard screw	M6	M6
Number of screws	4	4
Wall mount bracket	LSW240B MSW240	OLW480B

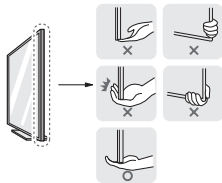
Lifting and moving the TV

Please note the following advice to prevent the TV from being scratched or damaged and for safe transportation regardless of its type and size.

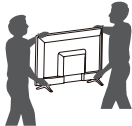
- It is recommended to move the TV in the box or packing material that the TV originally came in.
- Before moving or lifting the TV, disconnect the power cord and all cables.
- When holding the TV, the screen should face away from you to avoid damage.



- Hold the side and bottom of the TV frame firmly. Make sure not to hold the transparent part, speaker, or speaker grill area.



- When transporting a large TV, there should be at least 2 people.
- When transporting the TV by hand, hold the TV as shown in the following illustration.



- When transporting the TV, do not expose the TV to jolts or excessive vibration.
- When transporting the TV, keep the TV upright, never turn the TV on its side or tilt towards the left or right.
- Do not apply excessive pressure to cause flexing / bending of frame chassis as it may damage screen.
- When handling the TV, be careful not to damage the protruding buttons.

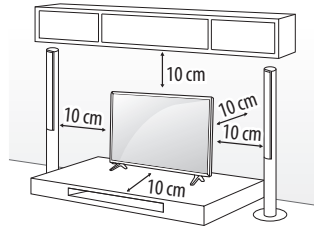


- Avoid touching the screen at all times, as this may result in damage to the screen.
- When attaching the stand to the TV set, place the screen facing down on a cushioned table or flat surface to protect the screen from scratches.

Mounting on the Table

1 Lift and tilt the TV into its upright position on a table.

- Leave a 10 cm (minimum) space from the wall for proper ventilation.



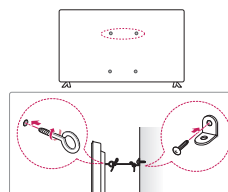
(Depending on model)

2 Connect the power cord to a wall outlet.



- Do not apply foreign substances (oils, lubricants, etc.) to the screw parts when assembling the product. (Doing so may damage the product.)
- If you install the TV on a stand, you need to take actions to prevent the product from overturning. Otherwise, the product may fall over, which may cause injury.
- Do not use any unapproved items to ensure the safety and product life span.
- Any damage or injuries caused by using unapproved items are not covered by the manufacturer's warranty.
- Make sure that the screws are inserted correctly and fastened securely. (If they are not fastened securely enough, the TV may tilt forward after being installed.) Do not use too much force and over tighten the screws; otherwise screw may be damaged and not tighten correctly.
- If a television is not positioned in a sufficiently stable location, it can be potentially hazardous due to falling. Many injuries, particularly to children, can be avoided by taking simple precautions such as:
 - Using cabinets or stands recommended by the manufacturer of the television.
 - Only using furniture that can safely support the television.
 - Ensuring the television is not overhanging the edge of the supporting furniture.
 - Not placing the television on tall furniture (for example, cupboards or bookcases) without anchoring both the furniture and the television to a suitable support.
 - Not standing the televisions on cloth or other materials placed between the television and supporting furniture.
 - Educating children about the dangers of climbing on furniture to reach the television or its controls.

Securing TV to the Wall

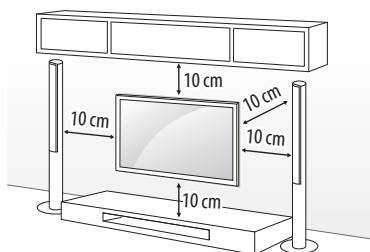


(Depending on model)

- 1 Insert and tighten the eye-bolts, or TV brackets and bolts on the back of the TV.
 - If there are bolts inserted at the eye-bolts position, remove the bolts first.
 - 2 Mount the wall brackets with the bolts to the wall. Match the location of the wall bracket and the eye-bolts on the rear of the TV.
 - 3 Connect the eye-bolts and wall brackets tightly with a sturdy rope. Make sure to keep the rope horizontal with the flat surface.
- Use a platform or cabinet that is strong and large enough to support the TV securely.
 - Brackets, bolts and ropes are not provided. You can obtain additional accessories from your local dealer.

Mounting to the Wall

Attach an optional wall mount bracket at the rear of the TV carefully and install the wall mount bracket on a solid wall perpendicular to the floor. When you attach the TV to other building materials, please contact qualified personnel. LG recommends that wall mounting be performed by a qualified professional installer. We recommend the use of LG's wall mount bracket. LG's wall mount bracket is easy to move with cables connected. When you do not use LG's wall mount bracket, please use a wall mount bracket where the device is adequately secured to the wall with enough space to allow connectivity to external devices. It is advised to connect all the cables before installing fixed wall mounts.

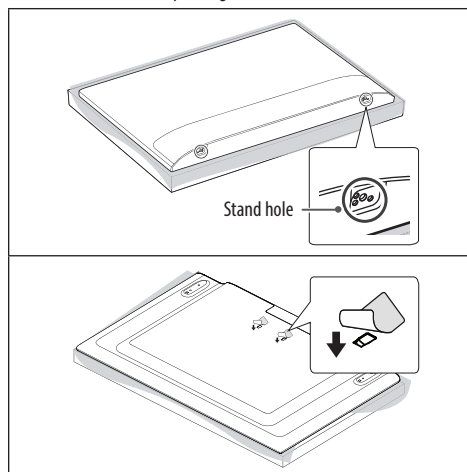


(Depending on model)



- Remove the stand before installing the TV on a wall mount by performing the stand attachment in reverse.
- For more information of screws and wall mount bracket, refer to the Separate Purchase.
- If you intend to mount the product to a wall, attach VESA standard mounting interface (optional parts) to the back of the product. When you install the set to use the wall mounting bracket (optional parts), fix it carefully so as not to drop.
- When mounting a TV on the wall, make sure not to install the TV by hanging the power and signal cables on the back of the TV.
- Do not install this product on a wall if it could be exposed to oil or oil mist. This may damage the product and cause it to fall.

- When installing the wall mounting bracket, it is recommended to cover the stand hole using tape, in order to prevent the influx of dust and insects. (Depending on model)



Connections

Connect various external devices to the TV and switch input modes to select an external device. For more information of external device's connection, refer to the manual provided with each device.

Antenna/Cable

Connect the TV to a wall antenna socket with an RF cable (75 Ω).

- Use a signal splitter to use more than 2 TVs.
- If the image quality is poor, install a signal amplifier properly to improve the image quality.
- If the image quality is poor with an antenna connected, try to realign the antenna in the correct direction.
- An antenna cable and converter are not supplied.

Other connections

Connect your TV to external devices. For the best picture and audio quality, connect the external device and the TV with the HDMI cable. Some separate cable is not provided.

HDMI

- When connecting the HDMI cable, the product and external devices should be turned off and unplugged.
- Supported HDMI Audio format:
(Depending on model)
Dolby Digital / Dolby Digital Plus (32 kHz / 44.1 kHz / 48 kHz),
PCM (32 kHz / 44.1 kHz / 48 kHz / 96 kHz / 192 kHz)
- HDMI Resolution Supported:
(Only UN70*)
- 4K 30 Hz, 444, 8 bit
- 1080p 60 Hz, 444, 8/10/12/16 bit
(Only LN56*)
- 1080p 60 Hz, 444, 8/10/12/16 bit

USB

Some USB Hubs may not work. If a USB device connected using a USB Hub is not detected, connect it to the USB port on the TV directly.

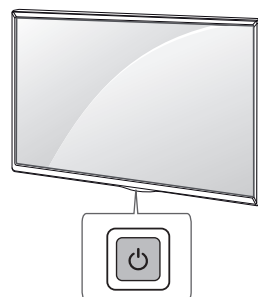
External Devices

Available external devices are: Blu-ray player, HD receivers, DVD players, VCRs, audio systems, USB storage devices, gaming devices, and other external devices.

- The external device connection may differ from the model.
- Connect external devices to the TV regardless of the order of the TV port.
- If you record a TV program on a Blu-ray/DVD recorder or VCR, make sure to connect the TV signal input cable to the TV through a DVD recorder or VCR. For more information of recording, refer to the manual provided with the connected device.
- Refer to the external equipment's manual for operating instructions.
- If you connect a gaming device to the TV, use the cable supplied with the gaming device.

Using Button

You can simply operate the TV functions, using the button.



Basic functions

	Power On (Press)
	Power Off ¹ (Press and Hold)
	Menu Control (Press ²)
	Menu Selection (Press and Hold ³)

- 1 All running apps will close, and any recording in progress will stop.
- 2 You can access and adjust the menu by pressing the button when TV is on.
- 3 You can use the function when you access menu control.

Adjusting the menu

When the TV is turned on, press the button one time. You can adjust the Menu items using the button.

	Turns the power off.
	Scrolls through the saved programmes.
	Adjusts the volume level.
	Changes the input source.

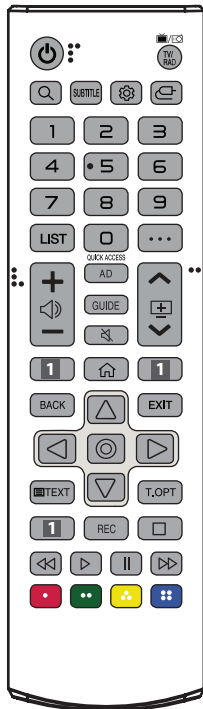
Using Remote Control

(Depending on model)

The descriptions in this manual are based on the buttons on the remote control. Please read this manual carefully and use the TV correctly.

To replace batteries, open the battery cover, replace batteries (1.5 V AAA) matching the \oplus and \ominus ends to the label inside the compartment, and close the battery cover.

Make sure to point the remote control toward the remote control sensor on the TV.



(Some buttons and services may not be provided depending on models or regions.)

POWER Turns the TV on or off.

SUBTITLE Recalls your preferred subtitle in digital mode.

Settings Accesses the Settings menu.

INPUT Changes the input source.

Number buttons Enters numbers.

LIST Accesses the saved programmes list.

... (MORE ACTIONS) Displays more remote control functions.

+ - Adjusts the volume level.

AD Audio descriptions function will be enabled. (Depending on model)

GUIDE Shows programme guide. (Depending on model)

(MUTE) Mutes all sounds.

Up/Down Scrolls through the saved programmes.

Streaming Service buttons Connects to the Video Streaming Service. (Depending on model)

(HOME) Accesses Home menu.

BACK Returns to the previous level.

EXIT Clears on-screen displays and returns to TV viewing.

Navigation buttons (up/down/left/right) Scrolls through menus or options.

(OK) Selects menus or options and confirms your input.

TEXT These buttons are used for teletext.

Left/Right/Stop/Play (Control buttons) Controls media contents.

Red/Green/Yellow/Blue These access special functions in some menus.

TV/RAD, Q, SEARCH, QUICK ACCESS, T.OPT (Teletext buttons), REC This function is not supported.



- Do not mix new batteries with old batteries. This may cause the batteries to overheat and leak.
- Failure to match the correct polarities of the battery may cause the battery to burst or leak, resulting in fire, personal injury, or ambient pollution.
- This apparatus uses batteries. In your community there might be regulations that require you to dispose of these batteries properly due to environmental considerations. Please contact your local authorities for disposal or recycling information.
- Batteries inside or inside the product shall not be exposed to excessive heat such as sunshine, fire or the like.
- In Analogue TV and some countries, some remote control buttons may not work.

Settings

Automatically Setting Up Programme

⚙️ (Settings) → [Program] → [Auto Tuning]

Automatically tunes the programmes.

- If Input Source is not connected properly, programme registration may not work.
- [Auto Tuning] only finds programmes that are currently broadcasting.
- If [Lock System] is turned on, a pop-up window will appear asking for password.
- Supported DTV Audio : MPEG, Dolby Digital, Dolby Digital Plus, HE-AAC

To select Picture Mode

⚙️ (Settings) → [Picture] → [Picture Mode]

Select the picture mode optimized for the viewing environment or the programme.

- [Standard] : Displays images in standard levels of contrast, brightness and sharpness.
- [Dynamic] : Optimizes the video image for high and dynamic actions by emphasizing primary colours such as white, grass, or sky blue.
- [Movie] : Displays the optimum picture for movie, game.
- Only [User] mode can be set to your preference by adjusting particular items such as [Contrast], [Brightness], [Colour], [Sharpness].
- Depending on input signal, available range of picture modes may differ.

Fine-tuning Picture Mode

⚙️ (Settings) → [Picture]

This feature allows you to adjust the selected picture mode in detail.

- [Contrast] : Adjusts the contrast of the bright and dark areas of the picture. The closer to 100, the higher the contrast.
- [Brightness] : Adjusts the overall screen brightness. The closer to 100, the brighter the screen.
- [Colour] : Tones down or up the colours displayed on the screen. The closer to 100, the deeper the colour.
- [Sharpness] : Adjusts the sharpness of the image. The closer to 50, the sharper and clearer the image.
- [Tint] : Adjusts the colour balance between red and green displayed on the screen. The closer to Red 50, the more red the colour will be. The closer to Green 50, the more green the colour will be.
- [Backlight] : Controls the level of screen brightness by adjusting the backlight. The closer to 100, the brighter the screen.
- [Colour Temperature] : Adjusts the colour temperature from cold to warm.
- Depending on input signal or other picture settings, the range of detailed items for adjustment may differ.

To adjust Aspect Ratio

⚙️ (Settings) → [Picture] → [Aspect Ratio]

Selects the screen aspect ratio.

- [Auto] : Detect the source signal aspect ratio and displays an aspect ratio automatically.
 - If can't detect the source signal aspect ratio, TV will set aspect ratio to 16:9.
- [4:3] : Displays an aspect ratio of 4:3.
- [16:9] : Displays an aspect ratio of 16:9.
- [Movie] : Change the overscan parameter of the picture, it will cut the around of the original picture.
- [Subtitle] : Change the overscan parameter of the picture, it will display more space of the bottom of the original picture.
- [Panorama] : Displays window in size of your panel.
- [Native] : Display window to center, with the same size as the original picture in HDMI.

To set Noise Reduction

⚙️ (Settings) → [Picture] → [Noise Reduction]

Select the right mode to match the pictures.

To set select Open HDR option

⚙️ (Settings) → [Picture] → [Open HDR]

Provide more dynamic range and image detail to better reflect the visual effects in the real environment.

- [Auto] : Enable HDR function, deliver brightest highlights with high contrast.
- [Low] : Enable HDR function, deliver brighter highlights with low contrast.
- [Middle] : Enable HDR function, deliver brighter highlights with middle contrast.
- [High] : Enable HDR function, deliver brightest highlights with high contrast.

To select Sound Mode

⚙️ (Settings) → [Sound] → [Sound Mode]

Adjusts TV audio to an optimal level based on a selected sound mode.

- [Standard] : Selects the normal sound mode.
- [Music] : Provides clear and live sound for music.
- [Movie] : Provides live and full sound for movies.
- [Sport] : Emphasizes bass over other sounds.
- [User] : Selects your custom sound settings.
 - In [User] mode, [Equalizer] is available. [Equalizer] used to adjust the amplitude of some fixed frequencies.

To adjust audio balance

⚙️ (Settings) → [Sound] → [Balance]

Adjust the volume of the left and right speakers.

To adjust auto volume limit

⚙️ (Settings) → [Sound] → [Auto Volume Limit]

Adjusts the volume of the desired channel by lowering the sound output when the modulation signal is high or by raising the sound output when the modulation signal is low.

To adjust surround sound

⚙️ (Settings) → [Sound] → [Surround Sound]

Turn on surround sound to gain better sound effect.

To adjust Dolby Audio Process

⚙️ (Settings) → [Sound] → [Dolby Audio Process]

Set Dolby sound switch. When set [On], You can adjust the [Sound Mode] to adjust the Dolby mode you want.

To adjust AD (audio description) Switch

⚙️ (Settings) → [Sound] → [AD Switch]

Adjust the proportion of audio description. AD Switch is on, you can set the volume ratio in DTV mode. Bigger value means higher audio description volume.

To control Digital Output Type

⚙️ (Settings) → [Sound] → [Digital output type]

Set digital audio output type in DTV or HDMI mode.

To set audio type

⚙️ (Settings) → [Sound] → [Audio Type] / [Audio Delay]

- [Audio Type] : Choose audio type.
- [Audio Delay] : Manually adjust the audio delay value to synchronize the audio with the video.

To set Language

⚙️ (Settings) → [Setting] → [Language]

You can select the language of the menu displayed on the screen and the digital sound broadcasting.

- [OSD Language] : Switch the language of the OSD menu.
- [Audio Language] : Set the audio language.
- [Primary] / [Secondary] : (In Digital mode Only)(The configurable items differ depending on country.) Selects the desired language when watching digital broadcasting containing several voice languages.
- [Subtitle Language] : (In Digital mode Only)(The configurable items differ depending on country.) Set the subtitle language.
- [Subtitle] : Turn the subtitle function on or off.
- [Primary] / [Secondary] : Switch the subtitle language.
- [Hearing Impaired] : Convenient for hearing impaired users and shown in the explanatory language below. Only those programs with hearing impaired can see these text descriptions.

To set OSD Time

⚙️ (Settings) → [Setting] → [OSD Time]

Set the preferred amount of time for the OSD to be displayed on the screen.

To set current time

⚙️ (Settings) → [Setting] → [Time]

Checks or changes the time while watching TV.

- [Auto Sync] : Synchronizes the TV clock to the digital time information sent by the TV station.
- When Auto Sync is on, the clock is got from DTV streams; Set the clock when Auto Sync is off.
- [Off Time] / [On Time] : set the day & time to turn off / turn of the TV set.
- [Sleep Timer] : Turns off the TV after a preset number of minutes.
- [Auto Sleep] : Set no signal standby. If there is no signal in the current source of the TV, it will stand by after 10 minutes.
- [Time Zone] : (Depending on Country) Sets the time and date manually if the auto setup does not correspond to the current time.

To specify Factory Reset

⚙️ (Settings) → [Setting] → [Reset]

All stored information is deleted and TV settings are reset.

TV turns itself off and back on, and all settings are reset.

- When [Lock System] is in place, a pop-up window appears and asks for password.
- Do not turn off the power during initialization.

To lock system

⚙️ (Settings) → [Lock] → [Lock System]

Permits only specific programmes by blocking programmes or external input.

First set [Lock System] to [On].

- [Set Password] : Sets or changes the TV password. The initial password is set to '0000'.
- [Parental Guidance] : Blocks programmes with content inappropriate for children. Programmes can be selected but the screen is blank and the audio is muted. To watch a locked programme, enter the password.

To use Manual Tuning

⚙️ (Settings) → [Program] → [DTV Manual Tuning] / [ATV Manual Tuning]

Adjusts programmes manually and saves the results.

For digital broadcasting, signal strength and signal quality can be checked.

For analogue broadcasting, you can set up station names and use fine tuning (except for Satellite mode). Normally fine tuning is only necessary if reception is poor.

To check the signal information

⚙️ (Settings) → [Program] → [Signal Information]

See the information of the DTV channel.

This mode is used only in DTV mode.

To set the Network

⚙️ (Settings) → [Network] → [Wi-Fi] / [Ethernet]

The system provides Wi-Fi and wired networks. When network is used, select the menu and connect the networks.

To set the LAN/ WLAN

⚙️ (Settings) → [Network] → [Wake On LAN] / [Wake On WLAN]

Set the mobile phone to enter the same network segment as the TV. When the mobile phone enters Youtube, you will find a push icon in the upper right corner. After clicking, you can search for the TV, and then push to wake up the TV.

To use Netflix

⚙️ (Settings) → [About] → [Netflix]

View Netflix app license and version information.

- [Netflix Deactive] : Logout Netflix and clean all the account data.
- [Terminate Netflix] : Stop Netflix background running.
- [Netflix ESN] : Display the Netflix Esn information.
- [Netflix Version] : Display the Netflix version.

To display the information

⚙️ (Settings) → [About] → [View End-User License Agreement] / [System information] / [NetReady Information] / [Open Source Software Notice]

You can display the License Agreement, System information, NetReady Information, Open Source Software Notice.

To update the software

⚙️ (Settings) → [About] → [Software Update (USB)]

Copy the new software to a USB storage to TV to update the software.

To use My Media

Connect the USB storage device to the TV's **USB IN** terminal.

Selects a file from the list. Displays the file that you choose.

Sets play related settings by checking option during disk playback.

Using a USB storage device - warning

- If the USB storage device has a built-in auto recognition programme or uses its own driver, it may not work.
- Some USB storage devices may not work or may work incorrectly.
- Use only USB storage devices formatted with the Windows FAT16, FAT32 or NTFS File System.
- For external USB HDDs, it is recommended that you use devices with a rated voltage of less than 5 V and a rated current of less than 500 mA.
- It is recommended that you use USB memory sticks of 32 GB or less and USB HDDs of 2 TB or less.
- If a USB HDD with power-saving function does not work properly, turn the power off and on. For more information, refer to the user manual of the USB HDD.
- Data in the USB storage device can be damaged, so be sure to back up important files to other devices. Data maintenance is the user's responsibility and the manufacturer is not responsible for data loss.

My Media supporting file

- External supported subtitle format: *.srt, *.ssa/*.*.ass, *.smi, *.sub, *.txt

Supported Video Formats

Extension	Codec	
.dat, .vob	video	MPEG1/2
	audio	MPEG1/2 Layer1/Layer2, MPEG1/2/2.5 Layer3, AAC, HEAAC, AC3, EAC3, LPCM
.ts, .trp, .tp	video	MPEG1/2, H.264, HEVC/H.265, MVC, VC1
	audio	MPEG1/2 Layer1/Layer2, MPEG1/2/2.5 Layer3, AAC, HEAAC, AC3, EAC3, LPCM
.mp4	video	MPEG1/2, MPEG4, H.263, H.264, HEVC/H.265, Motion JPEG
	audio	MPEG1/2/2.5 Layer3, AAC, HEAAC, AC3, EAC3, LPCM
.3gpp, .3gp	video	MPEG1/2, MPEG4, HEVC/H.265, H.264
	audio	MPEG1/2/2.5 Layer3, AAC, HEAAC, AC3, EAC3, LPCM
.mkv	video	MPEG1/2, MPEG4, H.263, H.264, HEVC/H.265, VC1, Motion JPEG, VP8, VP9
	audio	MPEG1/2 Layer1/Layer2, MPEG1/2/2.5 Layer3, AAC, HEAAC, AC3, LPCM
.webm	video	VP9, VP8
.mpg, .mpeg	video	MPEG1/2, MPEG4, VC1
	audio	MPEG1/2 Layer1/ Layer2, MPEG1/2/2.5 Layer3, AAC, HEAAC, AC3, EAC3, LPCM

Supported Audio Formats

Extension	Item	Info
.mp3	bit rate	32kbps ~ 448 kbps
	Sample freq.	16khz ~ 48 khz
	support	MPEG1/2 Layer1
	channel	up to 2
.mp3	bit rate	8Kbps ~ 384Kbps
	Sample freq.	16KHz ~ 48KHz
	support	MPEG1/2 Layer2
	channel	up to 2
.mp3	bit rate	8kbps ~ 320kbps
	Sample freq.	8khz ~ 48 khz
	support	MPEG1/2/2.5 Layer3
	channel	up to 2
.aac	bit rate	v1: 6kbps ~ 288kbps v2: 3kbps ~ 144kbps AAC-LC: 12kbps ~ 576kbps
	Sample freq.	8khz ~ 48 khz
	support	HEAAC, AAC-LC
	channel	up to 5.1
.m4a	bit rate	8kbps ~ 320kbps
	Sample freq.	8khz ~ 48 khz
	support	MPEG1/2/2.5 Layer3
	channel	up to 2
.m4a	bit rate	32kbps ~ 640kbps
	Sample freq.	32khz, 44.1khz, 48khz
	support	AC3
	channel	up to 5.1
.m4a	bit rate	32kbps ~ 6mbps
	Sample freq.	32khz, 44.1khz, 48khz
	support	EAC3
	channel	up to 5.1
.m4a	bit rate	v1: 6kbps ~ 288kbps v2: 3kbps ~ 144kbps AAC-LC: 12kbps ~ 576kbps
	Sample freq.	8khz ~ 48 khz
	support	HEAAC, AAC
	channel	up to 5.1

.m4a	bit rate	64Kbps~1.5Mbps
	Sample freq.	8KHz~48KHz
	support	LPCM
	channel	Mono, Stereo, 5.1
.ec3	bit rate	32kbps ~ 6mbps
	Sample freq.	32khz, 44.1khz, 48khz
	support	EAC3
	channel	up to 5.1
.ac3	bit rate	32kbps ~ 640kbps
	Sample freq.	32khz, 44.1khz, 48khz
	support	AC3
	channel	up to 5.1
.aac	bit rate	v1: 6kbps ~ 288kbps v2: 3kbps ~ 144kbps AAC-LC: 12kbps ~ 576kbps
	Sample freq.	8khz ~ 48 khz
	support	HEAAC, AAC
	channel	up to 5.1

- When moving to a folder containing videos while playing music, the music may stop playing.

Supported Photo Formats

File format	Item	Resolution	Resolution(Minimum)
JPEG	Base-line	15360 x 8640	65 x 65
	Progressive	1024 x 768	
PNG	non-interlace	9600 x 6400	
	interlace	1200 x 800	
BMP	Photo size	9600 x 6400	

- BMP and PNG format files may be slower to display than JPEG

Troubleshooting

Cannot control the TV with the remote control.

- Check the remote control sensor on the product and try again.
- Check if there is any obstacle between the product and the remote control.
- Check if the batteries are still working and properly installed (⊕ to ⊕, ⊖ to ⊖).

No image display and no sound is produced.

- Check if the product is turned on.
- Check if the power cord is connected to a wall outlet.
- Check if there is a problem in the wall outlet by connecting other products.

The TV turns off suddenly.

- Check the power control settings. The power supply may be interrupted.
- Check if the auto-off function is activated on the settings related time.
- If there is no signal while the TV is on, the TV will turn off automatically after 15 minutes of inactivity.

When connecting to the PC (HDMI), no signal is detected.

- Turn the TV off/on using the remote control.
- Reconnect the HDMI cable.
- Restart the PC with the TV on.

When connecting to the PC(HDMI), 4K resolution is not detect.

- Change setting → HDMI EDID to 2.0(4K)

Abnormal Display

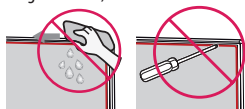
- If the product feels cold to the touch, there may be a small “flicker” when it is turned on. This is normal, there is nothing wrong with product.
- This panel is an advanced product that contains millions of pixels. You may see tiny black dots and/or brightly coloured dots (red, blue or green) at a size of 1 ppm on the panel. This does not indicate a malfunction and does not affect the performance and reliability of the product. This phenomenon also occurs in third-party products and is not subject to exchange or refund.
- You may find different brightness and colour of the panel depending on your viewing position(left/right/top/down). This phenomenon occurs due to the characteristic of the panel. It is not related with the product performance, and it is not malfunction.
- Displaying a still image for a prolonged period of time may cause image sticking. Avoid displaying a fixed image on the TV screen for a long period of time.

Generated Sound

- “Cracking” noise: A cracking noise that occurs when watching or turning off the TV is generated by plastic thermal contraction due to temperature and humidity. This noise is common for products where thermal deformation is required.
- Electrical circuit humming/panel buzzing: A low level noise is generated from a high-speed switching circuit, which supplies a large amount of current to operate a product. It varies depending on the product. This generated sound does not affect the performance and reliability of the product.



- When cleaning the product, be careful not to allow any liquid or foreign objects to enter the gap between the upper, left or right side of the panel and the guide panel. (Depending on model)



- Make sure to wring any excess water or cleaner from the cloth.
- Do not spray water or cleaner directly onto the TV screen.
- Make sure to spray just enough of water or cleaner onto a dry cloth to wipe the screen.

Specifications

(Depending on country)

ENGLISH

Broadcasting Specifications		
	Digital TV (Depending on Country)	Analogue TV (Depending on Country)
Television system	DVB-T/T2	PAL B/G, PAL D/K, PAL-I, PAL-M, NTSC-M, SECAM BG, SECAM DK
Programme Coverage	VHF, UHF	
Maximum number of storable programmes	DVB-T/T2: 1000 Analogue TV: 256	
External antenna impedance	75 Ω	

Wireless module (MT7603U) specifications	
Wireless LAN (IEEE 802.11b/g/n)	
Frequency Range	Output Power (Max.)
2,400 to 2,483.5 MHz	19 dBm
As band channels can vary per country, the user cannot change or adjust the operating frequency. This product is configured for the regional frequency table.	
For consideration of the user, this device should be installed and operated with a minimum distance of 20 cm between the device and the body.	
* IEEE 802.11ac is not available in all countries.	

Environment condition	
Operating Temperature	0 °C to 40 °C
Operating Humidity	Less than 80 %
Storage Temperature	-20 °C to 60 °C
Storage Humidity	Less than 85 %

- The energy information provided with the product is indicated in accordance with the regulations of each country. (Depending on Country)
 - The Energy consumption is measured in accordance with IEC 62087.
- Actual Energy consumption may vary depending on factors such as the type of video content being played and TV settings.
- For information of the power supply and power consumption, refer to the label attached to the product. (Depending on Country)
 - The typical power consumption is measured in accordance with IEC 62087 or each country's energy regulations.
 - * On some models, the label is inside the external device connection terminal cover.
 - * Depending on the model or country, the typical power consumption may not be on label.

HDMI supported mode

Resolution	Vertical Frequency (Hz)
480p	60.00
576p	50.00
720p	50.00 60.00
1080i	50.00 60.00
1080p	50.00 60.00
3840 x 2160 ¹	24.00 25.00 30.00 50.00 60.00

¹ Only UN70*

Component port connecting information

Component ports on the TV	Y	P	P _R
---------------------------	---	---	----------------

Video output ports on DVD player	Y	P _B	P _R
	Y	B-Y	R-Y
	Y	Cb	Cr
	Y	Pb	Pr

Resolution	Vertical Frequency (Hz)
480i	60.00
480p	60.00
576i	50.00
576p	50.00
720p	50.00 60.00
1080i	50.00 60.00
1080p	50.00 60.00

Open Source Software Notice Information

To obtain the source code under GPL, LGPL, MPL, and other open source licenses, that is contained in this product, please visit <http://opensource.lge.com>.

In addition to the source code, all referred license terms, warranty disclaimers and copyright notices are available for download.

LG Electronics will also provide open source code to you on CD-ROM for a charge covering the cost of performing such distribution (such as the cost of media, shipping, and handling) upon email request to opensource@lge.com.

This offer is valid for a period of three years after our last shipment of this product. This offer is valid to anyone in receipt of this information.

Licenses

Manufactured under license from Dolby Laboratories. Dolby, Dolby Vision, Dolby Audio, Dolby Atmos, and the double-D symbol are trademarks of Dolby Laboratories.

HDMI™
HIGH-DEFINITION MULTIMEDIA INTERFACE

The terms HDMI, HDMI High-Definition Multimedia Interface, and the HDMI Logo are trademarks or registered trademarks of HDMI Licensing Administrator, Inc.

HEVC Advance™
Covered by Patents at patentlist.hevcadvance.com

Regulatory







WARNING!

Never place a television set in an unstable location. A television set may fall, causing serious personal injury or death. Many injuries, particularly to children, can be avoided by taking simple precautions such as :

- Using cabinets or stands recommended by the manufacturer of the television set.
- Only using furniture that can safely support the television set.
- Ensuring the television set is not overhanging the edge of the supporting furniture.
- Not placing the television set on tall furniture (for example, cupboards or bookcases) without anchoring both the furniture and the television set to a suitable support.
- Not placing the television set on cloth or other materials that may be located between the television set and supporting furniture.
- Educating children about the dangers of climbing on furniture to reach the television set or its controls.

If your existing television set is being retained and relocated, the same considerations as above should be applied.

Symbols

	Refers to alternating current(AC).
	Refers to direct current(DC).
	Refers to class II equipment.
	Refers to stand-by.
	Refer to "ON" (power).
	Refers to dangerous voltage.



The model and serial number of the product are located on the back and on one side of the product. Record them below in case you ever need service.

Model _____

Serial No. _____