



SIMPLE MANUAL

3D Blu-ray™ /
DVD Home
Theater System

To view the instructions of advanced features,
visit <http://www.lg.com> and then download Owner's Manual.
Some of the content in this manual may differ from your unit.

MODEL
LHB655NW



www.lg.com

Copyright © 2017-2019 LG Electronics Inc. All Rights Reserved.

ENGLISH



CAUTION: TO REDUCE THE RISK OF ELECTRIC SHOCK DO NOT REMOVE COVER (OR BACK) NO USER-SERVICEABLE PARTS INSIDE REFER SERVICING TO QUALIFIED SERVICE PERSONNEL



This lightning flash with arrowhead symbol within an equilateral triangle is intended to alert the user to the presence of uninsulated dangerous voltage within the product's enclosure that may be of sufficient magnitude to constitute a risk of electric shock to persons.



The exclamation point within an equilateral triangle is intended to alert the user to the presence of important operating and maintenance (servicing) instructions in the literature accompanying the product.

WARNING: TO PREVENT FIRE OR ELECTRIC SHOCK HAZARD, DO NOT EXPOSE THIS PRODUCT TO RAIN OR MOISTURE.

WARNING: Do not install this equipment in a confined space such as a book case or similar unit.

CAUTION: Do not use high voltage products around this product. (ex. Electrical swatter) This product may malfunction due to electrical shock.

CAUTION: Do not block any ventilation openings. Install in accordance with the manufacturer's instructions. Slots and openings in the cabinet are provided for ventilation and to ensure reliable operation of the product and to protect it from over heating. The openings shall never be blocked by placing the product on a bed, sofa, rug or other similar surface. This product shall not be placed in a built-in installation such as a bookcase or rack unless proper ventilation is provided or the manufacturer's instruction has been adhered to.



CAUTION: This product employs a Laser System. To ensure proper use of this product, please read this owner's manual carefully and retain it for future reference. Shall the unit require maintenance, contact an authorized service center. Use of controls, adjustments or the performance of procedures other than those specified herein may result in hazardous radiation exposure. To prevent direct exposure to laser beam, do not try to open the enclosure.

CAUTION concerning the Power Cord

The Power Plug is the disconnecting device. In case of an emergency, the Power Plug must remain readily accessible.

CAUTION: The apparatus shall not be exposed to water (dripping or splashing) and no objects filled with liquids, such as vases, shall be placed on the apparatus.

NOTICE: For safety marking information including product identification and supply ratings, please refer to the main label on the bottom or the other surface of the product.

CAUTION: No naked flame sources, such as lighted candles, should be placed on the apparatus.

- The appliance is not intended for use by young children or infirm persons without supervision.
- Young Children should be supervised to ensure that they do not play with appliance.
- If the appliance is supplied from a cord extension set or an electrical portable outlet device, the cord extension set on electrical portable outlet device must be positioned so that it is not subject to splashing or ingress of moisture.



RF Radiation Exposure Statement

This equipment shall be installed and used at a minimum distance of 20 cm from the human body.

Symbols

~	Refers to alternating current (AC).
≡	Refers to direct current (DC).
Ⓜ	Refers to class II equipment.
⏻	Refers to stand-by.
I	Refers to "ON" (power).
⚡	Refers to dangerous voltage.





Front Panel



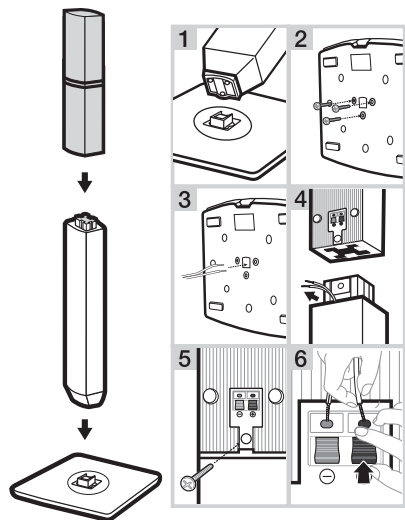
- USB Port** Connect a USB device.
△ Disc Tray Open / Close
>|| Starts / Pauses playback.
□ Stops playback.
F Changes the input source or function.
- / + Adjusts volume.
⏻ / I Power On / Off

Rear Panel



- SPEAKERS** Connect to speakers.
LAN Connect to Internet.
HDMI OUT TO TV Connect to TV.
AUX (L/R) INPUT Connect to analogue device.
OPTICAL IN Connect to digital device.
ANTENNA FM Connect to radio antenna.

1 Speaker Assembling

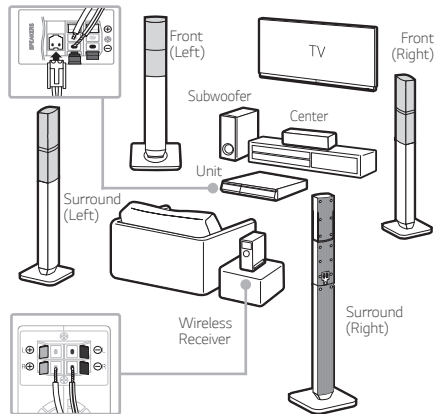


3 Pair Up with Wireless Receiver

- 1 Connect the rear speakers to the wireless receiver.
- 2 Connect the power cord of wireless receiver to the outlet.
- 3 Turn on the player :
The player and wireless receiver will be **automatically** connected. A yellow-green LED on the wireless receiver will light on.

2 Speaker Connection

! Speaker design and connection method may be different according to models.



If no sound is heard from the rear speakers connected to wireless receiver, please follow as below.

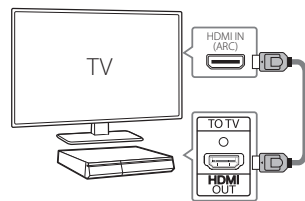
- i. Adjust volume level of player to minimum. "VOL MIN" appears on display window.
- ii. Press and hold **Mute** button on the remote control about 3 seconds. "VOL RESET" appears on display window.
- iii. Press and hold **PAIRING** on the rear of wireless receiver for more than 5 seconds using point of a pen.
- iv. Disconnect the power cord of the player and the wireless receiver. Connect them again.

4 TV Connection

Connect with the Player and TV using HDMI ARC (A) or HDMI & Optical (B).

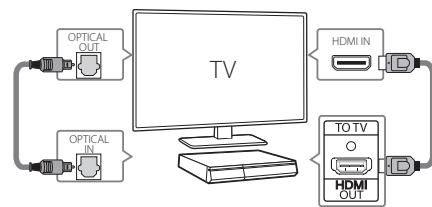
A HDMI(ARC) Connection

- 1 Connect the Player to the TV using HDMI cable.
- 2 Set the input selector to HDMI on the TV.
- 3 Set up [External Speaker (HDMI ARC)] on your TV setting menu.
- 4 Follow the instructions on the TV screen using remote control.



B HDMI & Optical Connection

- 1 Connect the Player to the TV using HDMI & Optical cable.
- 2 Set the input selector to HDMI on the TV.
- 3 Set up [External Speaker (Optical)] on your TV setting menu.
- 4 Follow the instructions on the TV screen using remote control.



Controller App



Download the LG AV Remote App to your device.

LG Sound Sync (Wireless)



For more information, download the online owner's manual. <http://www.lg.com>

Private Sound Mode



With MUSICflow



5 Home Menu


After initial setup, Home menu appears on the TV screen. Enjoy various functions on the player.



To enjoy online services, the player should be connected to internet through wired or wireless connection.

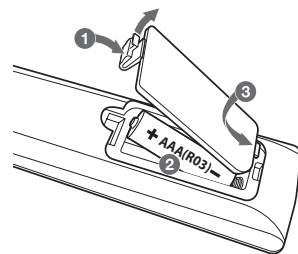
Additional Information

Specification

Power requirements	Refer to the main label.
Power consumption	Refer to the main label.
Dimensions (W x H x D)	Approx. 360 mm x 60.5 mm x 299 mm
Bus Power Supply (USB)	5 V  500 mA
Amplifier (Total RMS output power)	1,000 W RMS

Design and specifications are subject to change without notice.

Replacement of battery



OPEN SOURCE SOFTWARE NOTICE INFORMATION

To obtain the source code under GPL, LGPL, MPL, and other open source licenses, that is contained in this product, please visit <http://opensource.lge.com>. In addition to the source code, all referred license terms, warranty disclaimers and copyright notices are available for download. LG Electronics will also provide open source code to you on CD-ROM for a charge covering the cost of performing such distribution (such as the cost of media, shipping, and handling) upon email request to opensource@lge.com. This offer is valid for a period of three years after our last shipment of this product. This offer is valid to anyone in receipt of this information.

Customer Support

You can update the Player using the latest software to enhance the products operation and/or add new features. To obtain the latest software for this player (if updates have been made), proceed the software updates or visit <http://www.lg.com> or contact LG Electronics customer care center.



HDMI
HIGH-DEFINITION MULTIMEDIA INTERFACE

Java
POWERED