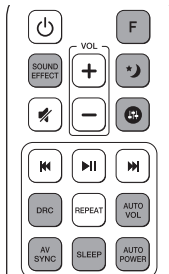
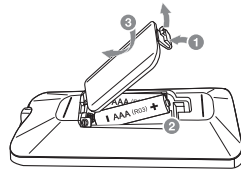


Remote control





Replacement of battery



- SOUND EFFECT:** Selects a sound effect mode.
- F:** Selects the function and the input source.
- 🌙:** Turns down the volume at night.
- 🔊:** Adjusts sound level of Treble, Bass and Sub-woofer.
- DRC:** Turns on or off DRC function.
- AV SYNC:** Synchronizes the audio and video.
- SLEEP:** Sets the system to turn off automatically at a specified time.
- AUTO VOL:** Adjusts the volume level appropriately.
- AUTO POWER:** Automatically turns on by an input source.

Additional Information

Specification

Power consumption	Refer to the main label.
	Networked standby : 5.8 W (If all network ports are activated.)
AC adapter	<ul style="list-style-type: none">Model : DA-50F25Manufacturer : Asian Power Devices Inc.Input : 100 - 240 V ~ 50 - 60 HZOutput : 25 V  2 A
Dimensions (W x H x D)	Approx. 1200 mm x 53 mm x 85 mm
Net Weight	Approx. 3.52 kg
Bus Power Supply (USB)	5 V  500 mA
Amplifier (Total RMS Output power)	420 W

Design and specifications are subject to change without notice.

OPEN SOURCE SOFTWARE NOTICE INFORMATION

To obtain the source code under GPL, LGPL, MPL, and other open source licenses, that is contained in this product, please visit

<http://opensource.lge.com>.

In addition to the source code, all referred license terms, warranty disclaimers and copyright notices are available for download.

LG Electronics will also provide open source code to you on CD-ROM for a charge covering the cost of performing such distribution (such as the cost of media, shipping and handling) upon email request to opensource@lge.com. This offer is valid for three (3) years from the date on which you purchased the product.

How to disconnect the wireless network connection or the wireless device

Press and hold the "⊕ (Add)" button until you hear the beep sound twice.



SIMPLE MANUAL
MUSICflow SH8

SMART Hi-Fi
AUDIO

Wireless Multi-room Sound Bar

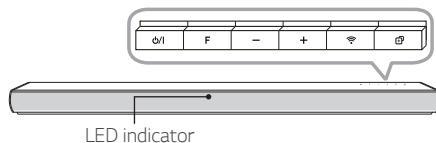
To view the instructions of advanced features, visit <http://www.lg.com> and then download Owner's Manual. Some of the content in this manual may differ from your unit.

MODEL
SH8





Front Panel



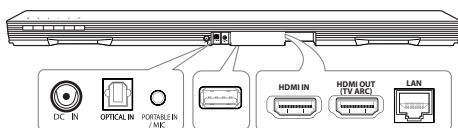
The buttons are located on the rear.

- ⏻ / I Standby / On
- F Selects function
- /+ Adjusts volume
- 📶 Connects wireless network.
- ⊕ Adds the additional MUSICflow product to your network. (In case that one or more MUSICflow product is connected.)

LED indicator: Shows connection status.

- White (blinking): waiting for network connection
- White (staying on): network connection is completed.
- White (Dimmed): standby mode with network connection.
- Green (staying on): the first group was set.
- Red (staying on): standby mode without network connection

Rear Panel



- DC IN Connect to AC Adapter.
- OPTICAL IN Connect to an optical device
- PORTABLE IN / MIC Connect portable device or microphone.
- USB (Service only) S/W download connector.
- HDMI IN Connect to device with HDMI OUT.
- HDMI OUT (TV ARC) Connect to a TV.
- LAN Connect to router.

Subwoofer Connection

Place the wireless subwoofer near the speaker and follow steps below.

- 1 Connect the power cord of wireless subwoofer to the outlet.

- 2 Turn on the main unit :

The sound bar and wireless subwoofer will be **automatically** connected. The subwoofer's green LED turns on.

Subwoofer Connection Manually

- 1 Reset the Subwoofer

If the green LED on the subwoofer blinks quickly, skip this step and go to 2

- Press and hold Paring button for 5 seconds.
- The LED lights up alternately in red and green.
- Plug out the power cord. After the LED turns off completely, plug in the power cord again.

When the reset is completed, the subwoofer's green LED blinks quickly.

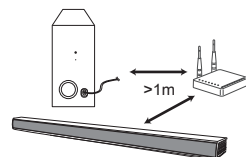
- 2 Reset the sound bar

- Adjust volume to minimum. "MIN" appears on display window.
- Press and hold ⚡ (Mute) button on the remote control for 5 seconds. "SUB - WF RESET" appears on display window.
- Turn the sound bar's power off and on while the subwoofer's green LED blinks.

When the connection is completed, you can see the green LED on the subwoofer.



Keep the sound bar and the subwoofer away from the device (ex. wireless router, microwave oven, etc.) over 1m to prevent wireless interference.

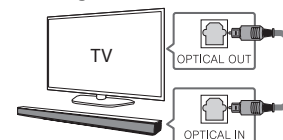


TV Connection

Connect the speaker and TV using Optical (A) or HDMI ARC (B).

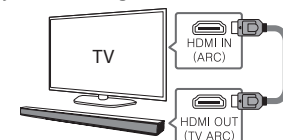
A Optical

- 1 Connect the speaker to the TV using Optical cable.
- 2 Set up [External Speaker (Optical)] on your TV setting menu.



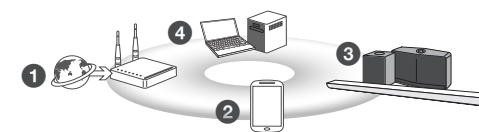
B HDMI(ARC) Connection

- 1 Connect the speaker to the TV using HDMI cable.
- 2 Set up [External Speaker (HDMI ARC)] on your TV setting menu.



HDMI connection is unavailable if your TV does not support HDMI ARC.

Network Connection



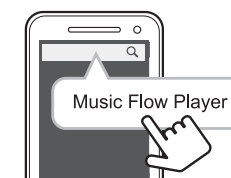
- 1 Check network condition. A router connected to network should be installed.
- 2 Connect your smart device to your home network.
- 3 Connect the speaker to the power supply.
- 4 Connect the media server to your home network in order to enjoy music.



All devices should be connected to same router.

Download LG Music Flow Application

Download "Music Flow Player" on the Apps Store or Google Play Store.

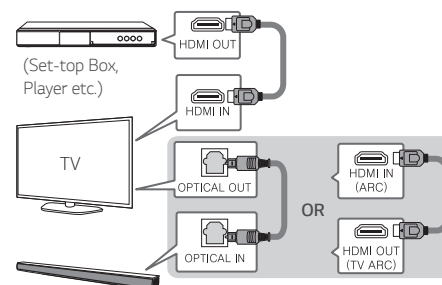


Launch Music Flow Player App

Follow the steps for wired or wireless connection displayed on the screen.

Additional Device Connection

- 1 Connect to the external device like as follow.



- 2 Set the input source by pressing F on the remote control or unit repeatedly.