

SOFTWARE GUIDE (Windows, Mac)

Please read this manual carefully before operating your set and retain it for future reference.

GUIDES ON USING PRODUCT FUNCTIONS (WINDOWS)

Image shown may differ from the product that you are using.

Windows Software

[Monitor Driver]

- Installation priority (required/optional) : Optional
- Usage : The resolution and frequency are adjusted for the monitor.

How to Install

- Installing with the CD provided.
: Insert the user manual CD provided in the product box into the PC's CD drive and install the driver program.
- Downloading from the LG Electronics website.
: www.lg.com

[OnScreen Control]

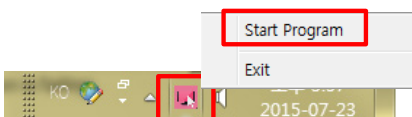
- Installation priority (required/optional) : Optional
- Usage : Software provided so that the key features of your monitor can be operated in the PC environment, including split screen and the setting of picture modes for each software program.

How to Install

- Installing with the CD provided.
: Insert the manual CD provided in the product box into the PC's CD drive and install the OnScreen Control.
- Downloading from the LG Electronics website.
: www.lg.com

How to Run

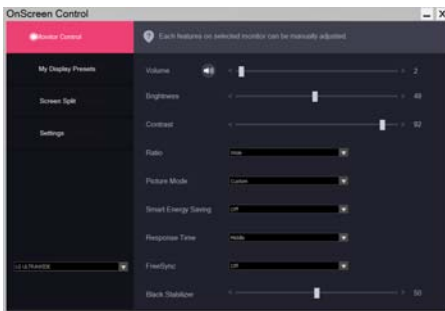
- 1 Connect an LG monitor that supports OnScreen Control to the PC.
 - 2 Run OnScreen Control.
- ① Double-click the shortcut icon on the desktop.
 - ② Click the tray icon in the bottom right corner of your PC screen. Click 'Start Program'.



How to Use

1 Monitor Control

You can control the basic features on the Settings menu, such as Volume, Brightness, Contrast, Ratio and Picture Mode.

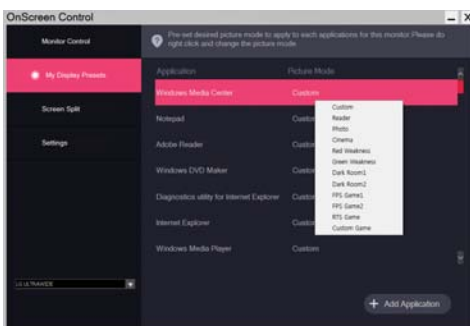


2 My Display Presets

My Display Presets allows you to preset the appropriate picture mode for each individual software program installed on your PC.

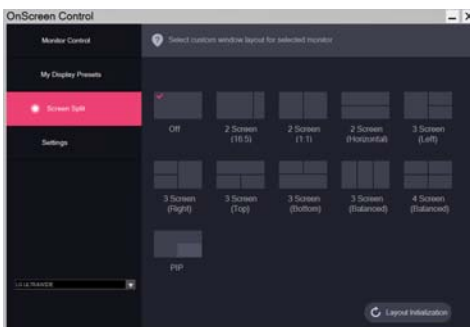
When you run an application for which you have already chosen a picture mode in My Display Presets, your monitor changes to the preset picture mode.

You can also add applications other than the default applications. Select [Add Application] and preset the picture mode for the additional applications.



3 Screen Split

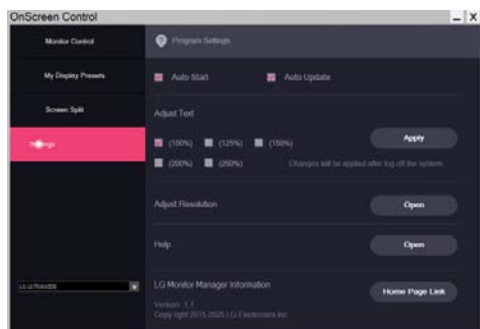
You can easily arrange multiple windows by using the split screen layout provided.



4 Settings

You can configure the settings for OnScreen Control.

Settings includes features such as Auto Start, Auto Update and Adjust Resolution and allow you to access Help and software information.



GUIDES ON USING PRODUCT FUNCTIONS (MAC)

Image shown may differ from the product that you are using.

Mac Software

[OnScreen Control]

- Installation priority (required/optional) : Optional
- Usage : Software provided so that the key features of your monitor can be operated in the PC environment, including split screen and the setting of picture modes for each software program.

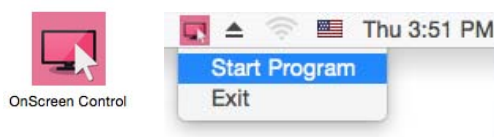
How to Install

- Installing with the CD provided.
: Insert the manual CD provided in the product box into the PC's CD drive and install the OnScreen Control.
- Downloading from the LG Electronics website.
: www.lg.com

How to Run

- 1 Connect an LG monitor that supports OnScreen Control to the PC.
- 2 Run OnScreen Control.

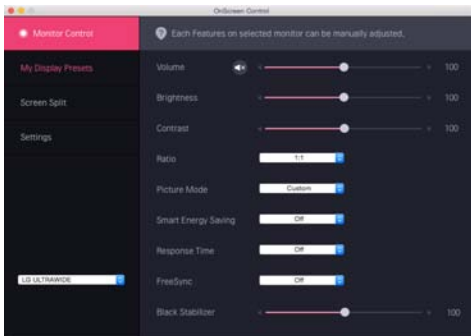
- ① Finder → Applications → Run OnScreen Control
- ② Click the OnScreen Control icon on the menu bar and then click 'Start Program'.



How to Use

1 Monitor Control

You can control the basic features on the Settings menu, such as Volume, Brightness, Contrast, Ratio and Picture Mode.

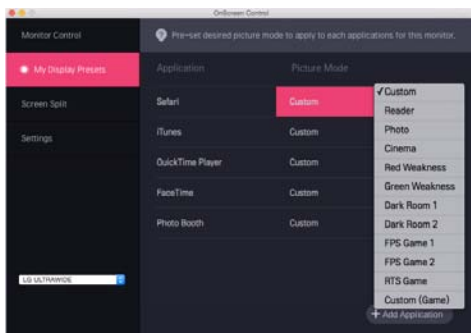


2 My Display Presets

My Display Presets allows you to preset the appropriate picture mode for each individual software program installed on your PC.

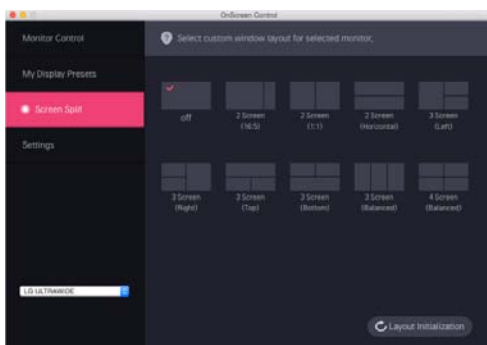
When you run an application for which you have already chosen a picture mode in My Display Presets, your monitor changes to the preset picture mode.

You can also add applications other than the default applications. Select [Add Application] and preset the picture mode for the additional applications.



3 Screen Split

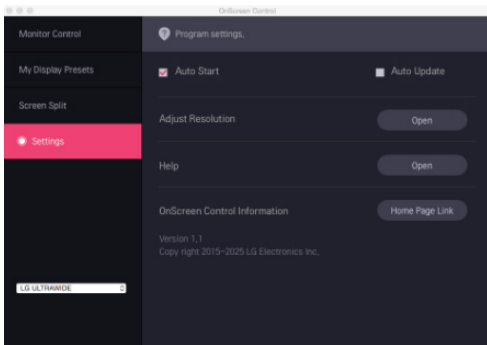
You can easily arrange multiple windows by using the split screen layout provided.



4 Settings

You can configure the settings for OnScreen Control.

Settings includes features such as Auto Start, Auto Update and Adjust Resolution and allow you to access Help and software information.

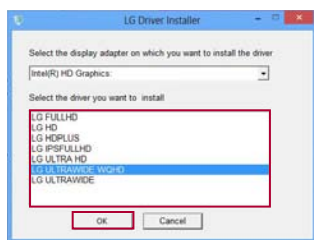


LG MONITOR DRIVER INSTALLATION GUIDE

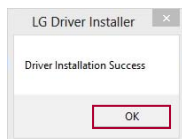
! NOTE

- Installing the monitor driver optimizes your monitor's resolution and frequency, making the image on the screen appear sharper and clearer.
- The monitor driver is included in the Owner's Manual CD.
- The latest monitor driver files can be downloaded from the LG Electronics website (www.lg.com).
- The installation image may differ depending on the product and the version of Windows you are using.
- For information on which driver you need to install for your monitor, see the last page of the installation guide.

- 1 Insert the Owner's Manual CD into your PC's CD-ROM drive.
- 2 Select **"Monitor Driver"** from the main menu of the Owner's Manual CD.
- 3 Follow the instructions according to your Windows version.
- 4 When the **"LG Driver Installer"** window appears, select the driver that matches your monitor model.



- 5 Install the driver you selected by clicking **"OK"**.
- 6 When the **"Driver Installation Success"** window appears, complete the installation by clicking **"OK"**.



- 7 Check if the monitor driver has been installed properly on your PC in the Control Panel's Display Settings.
 - 8 For information on the Control Panel, see your Windows User Guide.
-

