



SIMPLE MANUAL

# DVD Home Cinema System

To view the instructions of advanced features,  
visit <http://www.lg.com> and then download Owner's Manual.  
Some of the content in this manual may differ from your unit.

MODEL  
LHD645



[www.lg.com](http://www.lg.com)



## Front Panel



**PORT. IN** ..... Connect to a Portable device.

**USB Port** ..... Connect a USB device.

**△** ..... Disc Tray Open / Close

**>||** ..... Starts / Pauses playback.

**□** ..... Stops playback.

**F** ..... Changes the input source or function.

**- / +** ..... Adjusts volume.

**⏻ / I** ..... Power On / Off

## Rear Panel



**SPEAKERS** ..... Connect to speakers.

**HDMI OUT TO TV** ..... Connect to TV.

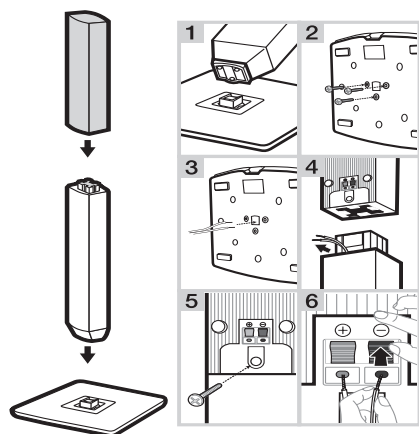
**AUX (L/R) INPUT** ..... Connect to analogue device.

**VIDEO OUT** ..... Connect to TV.

**OPTICAL IN** ..... Connect to digital device.

**ANTENNA FM** ..... Connect to radio antenna.

## 1 Speaker Assembling

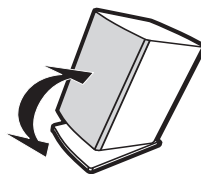


## 2 Speaker installation

You can use the speaker in Stand type (A) by adjusting the angle or Wall type (B) by mounting the speaker to a wall.

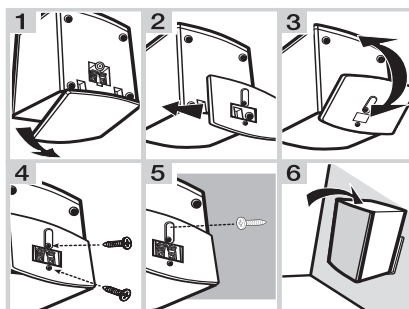
### A Stand type

You can adjust angle of speaker.



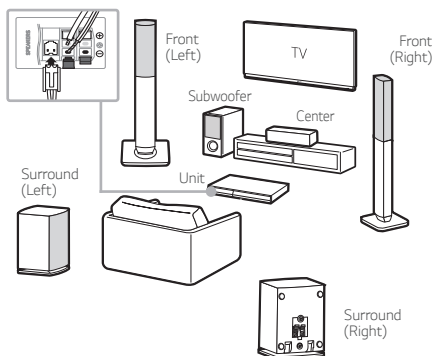
### B Wall type (Mounting the speakers to a Wall)

When you want to mount the speaker to a wall, please refer to below.



### 3 Speaker Connection

- ! Speaker design and connection method may be different according to models.



### 5 Home Menu

Home menu appears on the TV screen. Enjoy various functions on the player.



### 4 TV Connection

#### HDMI & Optical Connection

- 1 Connect the Player to the TV using HDMI & Optical cable.
- 2 Set the input selector to HDMI on the TV.
- 3 Set up [External Speaker (Optical)] on your TV setting menu.
- 4 Follow the instructions on the TV screen using remote control.




#### LG Sound Sync (Wireless)



For more information, download the online owner's manual. <http://www.lg.com>

## Additional Information

### Specification

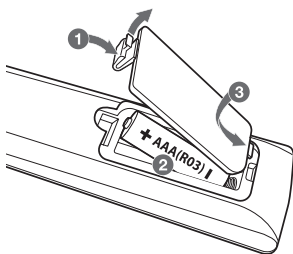
Power requirements	Refer to main label.
Power consumption	Refer to main label. Networked standby : 0.4 W (If all network ports are activated.)
Dimensions (W x H x D)	Approx. 360 mm x 60.5 mm x 299 mm
Net Weight	Approx. 2.69 kg
Bus Power Supply (USB)	5 V  500 mA
Amplifier (Total RMS output power)	1,000 W

Design and specifications are subject to change without notice.

### How to disconnect the wireless network connection or the wireless device

Turn off the unit by pressing the power button for more than 5 seconds.

### Replacement of battery



### Declaration of Conformity

# CE 0197

Hereby, LG Electronics European Shared Service Center B.V., declares that this DVD HOME CINEMA is compliant with the essential requirements and other relevant provisions of Directive 1999/5/EC. The complete Declaration of Conformity may be requested through the following postal address:

LG Electronics European Shared Service Center B.V.  
European Standard Team  
Krijgsman 1  
1186 DM Amstelveen  
The Netherlands

or can be requested at our dedicated DoC website:  
<http://www.lg.com/global/support/cedoc/cedoc#>

This device is a 2.4 GHz wideband transmission system, intended for use in all EU member states and EFTA countries.

**HDMI**™  
HIGH-DEFINITION MULTIMEDIA INTERFACE