

Specification**Power requirements**

- Refer to the main label.

Power consumption

- Refer to the main label.

Dimensions (W x H x D): Approx. 247.5 mm x 514.0 mm x 247.5 mm

Bus Power Supply (USB): 5 V  500 mA

Amplifier (Total RMS Output power): 1.20 W RMS

Battery Life: Approx. 10 hours (Varies by volume level and audio content.)

- This unit contains magnets which can be harmful to some kind of object (Ex: Magnetic card, Pacemaker etc.).
- Internal lithium battery in the unit should not be replaced by user because of danger of explosion if battery is incorrectly replaced, and must be replaced with the same type battery by expert.
- Do not leave the unit on an unstable place such as high shelves. It may fall down because of the vibration of the sound.

CAUTION when using this product in environments of low humidity.

- It may cause static electricity in environments of low humidity.
- It is recommended to use this product after touching any metal object which conducts electricity.



SIMPLE MANUAL

Omnidirectional portable speaker

RP4

RP4B

RP4BE

RP4G

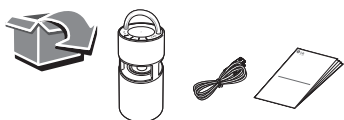


MFL71841377

2106_Rev01

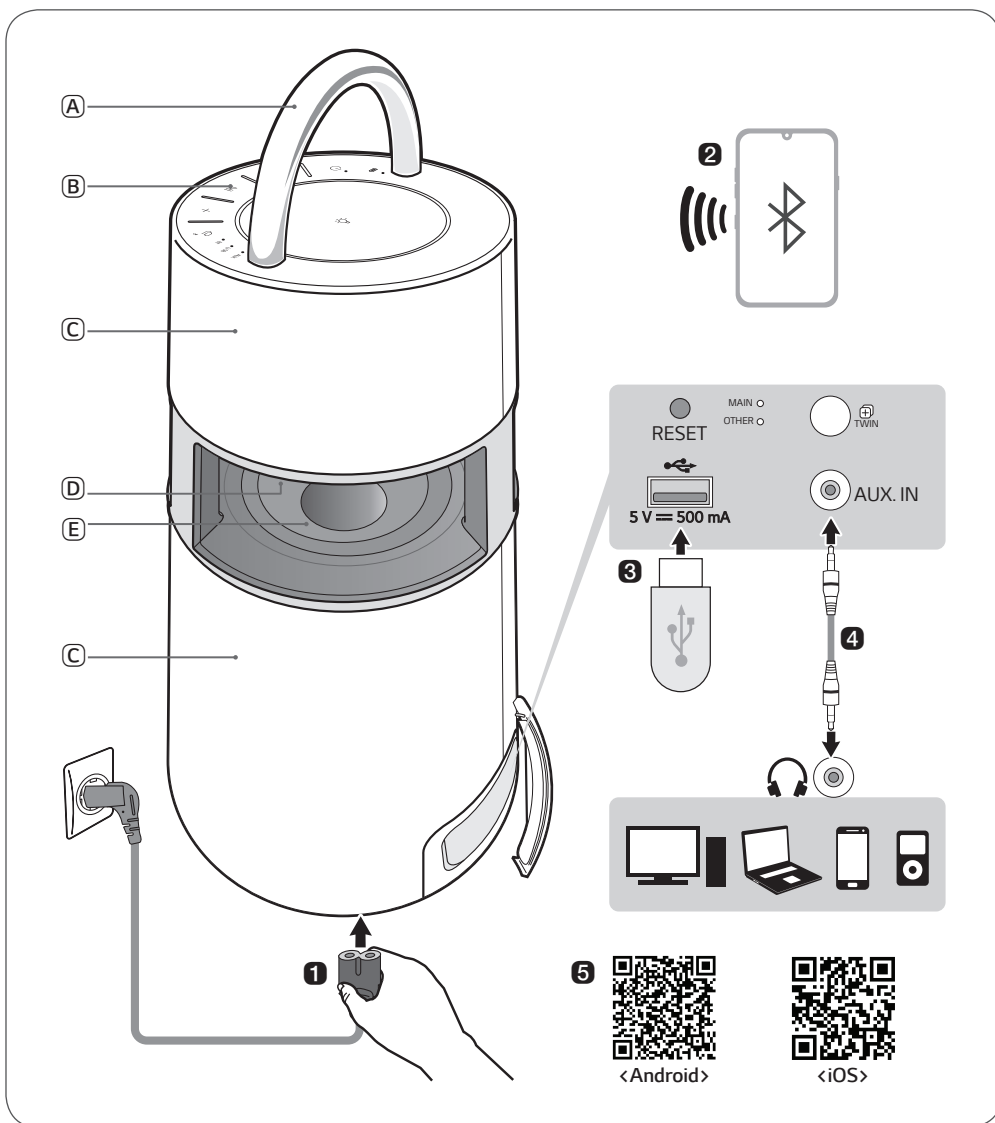

www.lg.com

Copyright © 2021 LG Electronics Inc. All Rights Reserved.



ENGLISH Installing and Using the Product

Please read this manual carefully before operating your set and retain it for future reference. To view the instructions of advanced features, visit <http://www.lg.com> or scan QR code and then download Owner's Manual. Some of the content in this manual may differ from your product.



- (A) Handle
- (B) Controls
- (C) Speaker

- (D) Mood lighting
- (E) Woofer

1 Connect the power cord to the product and charge it before use. You can find the power socket at the bottom of the product.

2 Connecting the Speaker to a Smartphone Using Bluetooth

- 1 Press the **Power** (⏻) button to turn on the product.
- 2 Press and hold the **Function** (⏸) button on the product until you hear a notification sound. **Bluetooth** LED blinks for 60 seconds.
- 3 Tap the **Settings** (⚙️) button on your smartphone and select **Bluetooth**. Turn on the **Bluetooth** function. (Off > On)
- 4 From the list of smartphone devices, find and tap on "LG-RP4(XX)".
- 5 Once the smartphone is connected to the product via **Bluetooth**, the **Bluetooth** LED will turn on. Play a desired track in the music app on your smartphone.

3 Playing Music from the USB

- 1 Open the back cover of the product and plug the USB storage device into the USB terminal.
- 2 Press the **Power** (⏻) button to turn on the product.
- 3 Press the **Function** (⏸) button on the product repeatedly to select the USB function. The USB LED will turn on.
- 4 Press the **Play/Pause** (⏮) button to enjoy the music.

4 Connecting to an External Device

- 1 Open the back cover of the product and connect the external device to the AUX. IN terminal via a 3.5 mm stereo cable.
- 2 Press the **Power** (⏻) button to turn on the product.
- 3 Press the **Function** (⏸) button on the product repeatedly to select AUX. The AUX LED will turn on. If you play music on the connected external device, you can start listening on this product.

5 Connecting to the LG XBOOM App

- 1 Find the **LG XBOOM** app on the Google Play or App Store and install it on your smartphone.
- 2 Run the **LG XBOOM** app and use its functions.

6 Power Saving

If there is no playback or button input for 15 minutes, the product turns off automatically. On the **LG XBOOM** app, you can enable or disable [Auto Power Management].

- Design and specifications are subject to change without notice.