



LG Pra.L Galvanic Ion Booster

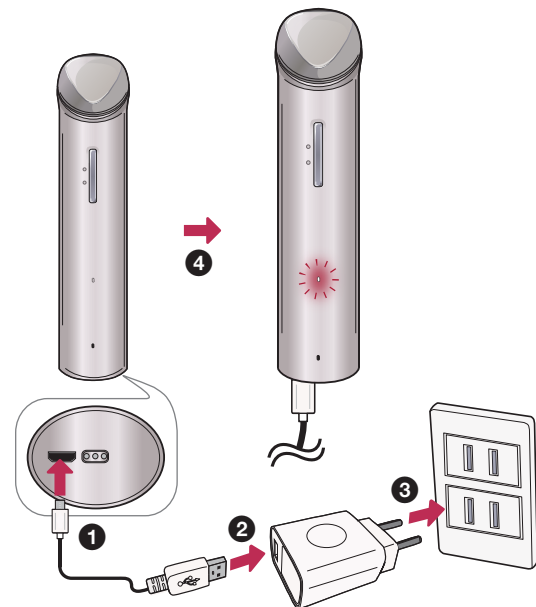
Model name
BBJ1V



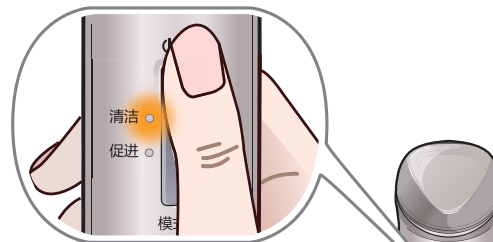
MBM66166271


1903_Rev01

Charge



Power on / off



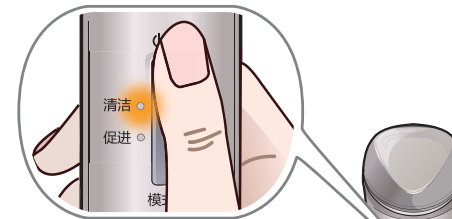
Press the  (power) button for a short while.
It will not work while charging.


Mode Selection (清洁 / 促进)



Press the 模式 button for a short while.
(清洁 → 促进)


Set voice guide function



Press the  (power) button
for a long while. (until you can hear
the voice guidance)
(Voice guide → Sound effect guide
→ Guide off (Mute))

Language Setting



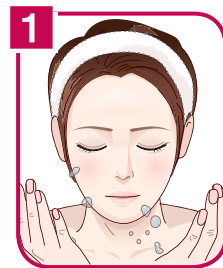
Press the  (power) button and the 模式 button
at the same time for a long while. (until you can
hear the voice guidance)
(Chinese → English)

Precautions for use

- When using this device, depending on individual skin condition, it may cause a variety of skin irritation. If such irritation persists, please reduce the number of use.
- In the following cases, it is recommended to use the device after consultation with a specialist.
 - Allergies skin, acne, dermatitis, skin treatment, cosmetic surgery or hair loss surgery
 - Wearing a cardiac pacemakers, device implantation or a metal prosthetic device.
- As a facial treatments only, it is not recommended to use for a body.
- Recommend using the product once a day by mode. Using more than twice a day may cause burning sensation on skin.
- Before using the device, if you are currently undergoing dermatology related treatment or have skin problems, consult your dermatologist and then use it.
- Pregnancy, menstruation, lactating women are not recommended for use. (Unstable hormonal balance may cause temporary skin trouble.)
- Do not use the device for purposes other than those set out in this guideline.
- Please pay attention to using cosmetics that contain the following ingredients as it may reduce the effect. (For example: denatured alcohol, sunscreen, retinol, oil)

Cleansing Mode (清洁)

Main functions: Warm,
Ion (+)



Remove makeup and
wash the face.



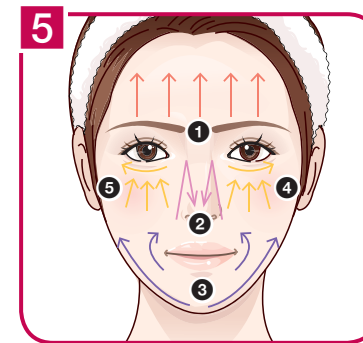
Apply moisture gel.



Turn on the power.

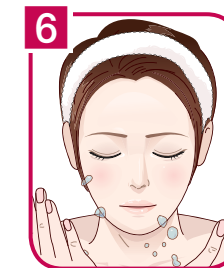


Press the 模式 button
and select the 清洁
Mode.



According to the Voice Guide
function, cleanse each area of the
face in the order in the direction of
an arrow.

- ➊ Forehead (45 seconds)
- ➔ ➋ Nose (45 seconds)
- ➔ ➌ Chin (30 seconds)
- ➔ ➍ Left cheek (30 seconds)
- ➔ ➎ Right cheek (30 seconds)



Rinse your face
sufficiently with tepid
water after cleansing.

Absorption Promotion Mode (促进)

Main functions: Warm,
Ion (-), Ultrasonic wave



Remove makeup and
wash the face.



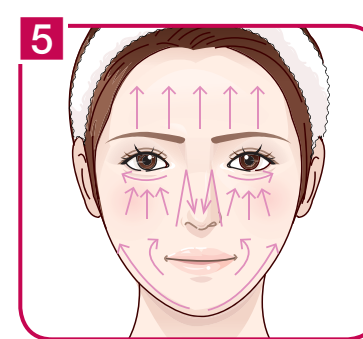
Apply cosmetics (eg,
Vitamin C Serum).



Turn on the power.



Press the 模式 button and
select the 促进
(absorption promotion)
Mode.



Take care of each desired area for
3 minutes in the direction of an
arrow.