


Specification**Power consumption**

- Refer to the main label.

AC adapter

- Model : A702-230131W-M21
- Manufacturer : Dongguan Aohai Technology Co.,Ltd.
- Input : 100 ~ 240 V ~ 50 / 60 Hz
- Output : 23.0 V  1.31 A

Dimensions (W x H x D): Approx. 720.0 mm x 63.0 mm x 87.0 mm

Bus Power Supply (USB): 5 V  500 mA

Amplifier (Total RMS Output power): 300 W RMS

Open Source Software Notice Information

To obtain the source code that is contained in this product, under GPL, LGPL, MPL, and other open source licenses that have the obligation to disclose source code, and to access all referred license terms, copyright notices and other relevant documents, please visit <https://opensource.lge.com>.

LG Electronics will also provide open source code to you on CD-ROM for a charge covering the cost of performing such distribution (such as the cost of media, shipping, and handling) upon email request to opensource@lge.com.

This offer is valid to anyone in receipt of this information for a period of three years after our last shipment of this product.



SIMPLE MANUAL

Wireless Soundbar

S40T

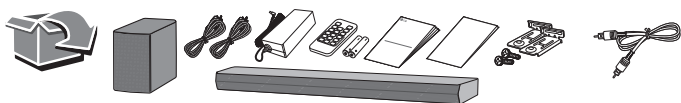


MFL05807511

2407_Rev02

www.lg.com

Copyright © 2024-2025 LG Electronics Inc. All Rights Reserved.

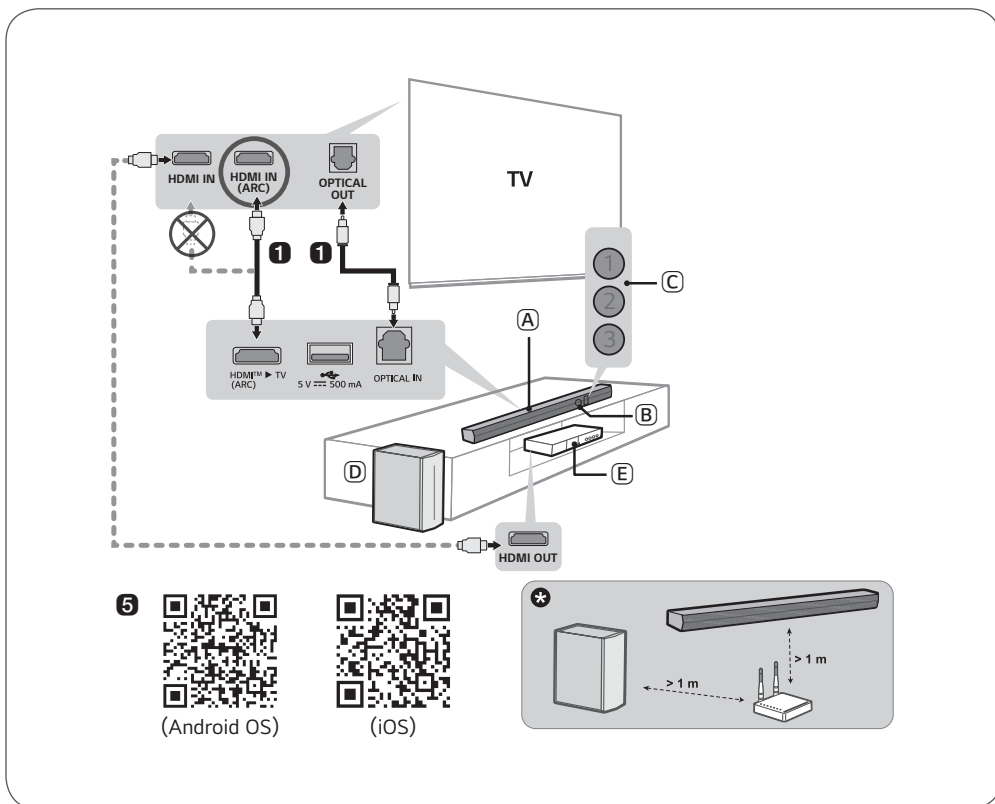


ENGLISH Installing and Using the Product

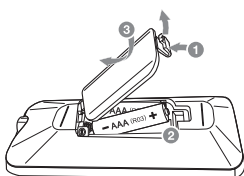
Please read this manual carefully before operating your set and retain it for future reference. To view the instructions of advanced features, visit <http://www.lg.com> or scan QR code and then download Owner's Manual. Some of the content in this manual may differ from your product.



- (A) Soundbar
- (B) Remote Control Receiver
- (C) Status LED (①②③)
- (D) Wireless Subwoofer - Install it close to the soundbar.
- (E) External Device - (Blu-ray player, game console, etc.)



Replacement of Battery



HDMI™
HIGH-DEFINITION MULTIMEDIA INTERFACE

○ : On / ● : Off / ◉ : Blink

Red blinking	White blinking	White	White	Purple
Power on Power off	Bluetooth ready	Bluetooth	OPTICAL / HDMI ARC	USB

- ① Connect the soundbar to your TV via an optical cable or an HDMI cable.
- ② If you are using an external device (ex. Set-top box, Blu-ray player, game console, etc.), connect it to the TV via an HDMI cable.
 - ⓘ If necessary, purchase HDMI cables, an optical cable, or a USB extension cable to connect the soundbar.
- ③ Connect to power in the following order: wireless subwoofer → soundbar. Then, turn on the soundbar. When the connection is automatically established with the soundbar, the LED on the wireless subwoofer will light up green.
- ④ Connecting the product to your smartphone via Bluetooth
 - ① Tap the **Settings** button on your smartphone and select **Bluetooth**. Turn on the **Bluetooth** function. (Off → On)
 - ② Press the **Bluetooth pair** button. After a moment, LED1 and LED2 blink white.
 - ③ Find and tap the product on your smartphone. The product appears as "LG S40T(XX)".
 - ④ When the product is connected to your smartphone via **Bluetooth**, LED1 and LED2 light up white.
- ⑤ Connecting to the LG ThinQ app
 - ① Find and install the **LG ThinQ app** on Google Play or App Store from your smartphone.
 - ② You can get more information regarding its use by selecting [Help] in [Setting].



If you see a red LED on the wireless subwoofer, it means that the soundbar is not connected to the subwoofer. If this is the case, connect them in the following order.

- ① Press the **Power** button on the soundbar to turn it off.
- ② Press the **PAIRING** button on the back of the wireless subwoofer. Check if LED blinks green.
 - If you still see a red LED on the wireless subwoofer, press and hold the button on the back of the subwoofer again.
- ③ Press the **Power** button on the soundbar to turn it on.
- ④ When the connection is established, you will see a green LED light on the wireless subwoofer light up.
- * Keep the soundbar, the subwoofer away from the device (ex. wireless router, microwave oven, etc.) over 1 m to prevent wireless interference.

- Design and specifications are subject to change without notice.
- Google Play is a trademark of Google LLC.