



OWNER'S MANUAL

KIMCHI REFRIGERATOR

Read this owner's manual thoroughly before operating the appliance and keep it handy for reference at all times.

EN ENGLISH

GK-B405PL



MFL67704811
Rev.07_030821

www.lg.com

Copyright © 2019 - 2021 LG Electronics Inc. All Rights Reserved.

TABLE OF CONTENTS

This manual may contain images or content different from the model you purchased.

This manual is subject to revision by the manufacturer.

SAFETY INSTRUCTIONS	3
IMPORTANT SAFETY INSTRUCTIONS	3
PRODUCT FEATURES.....	10
INSTALLATION.....	11
Compartments	11
Notes for Movement and Transport	12
Notes for Installation	12
Dimensions and Clearances	13
Ambient Temperature	13
Leveling	14
OPERATION	15
Before use	15
Parts and Functions (Applicable to some models only).....	16
Control Panel (Applicable to some models only).....	18
Notes for Operation	21
Storing Food	22
Recycling the Fresh Air Filter of the top compartments.....	25
Adjusting the Refrigerator Shelves	26
CustomChill Drawer	27
SMART FUNCTIONS.....	28
LG ThinQ Application.....	28
Smart Diagnosis	30
MAINTENANCE	31
Cleaning	31
TROUBLESHOOTING	33

SAFETY INSTRUCTIONS

EN

The following safety guidelines are intended to prevent unforeseen risks or damage from unsafe or incorrect operation of the appliance.

The guidelines are separated into 'WARNING' and 'CAUTION' as described below.

 This symbol is displayed to indicate matters and operations that can cause risk. Read the part with this symbol carefully and follow the instructions in order to avoid risk.

WARNING

This indicates that the failure to follow the instructions can cause serious injury or death.

CAUTION

This indicates that the failure to follow the instructions can cause the minor injury or damage to the product.

IMPORTANT SAFETY INSTRUCTIONS

WARNING

To reduce the risk of explosion, fire, death, electric shock, injury or scalding to persons when using this product, follow basic precautions, including the following:

Technical Safety

- This appliance is not intended for use by persons (including children) with reduced physical, sensory or mental capabilities, or lack of experience and knowledge, unless they have been given supervision or instruction concerning use of the appliance by a person responsible for their safety. Children should be supervised to ensure that they do not play with the appliance.

- This appliance should only be transported by two or more people holding the appliance securely.
- If the power cord is damaged or the hole of the socket outlet is loose, do not use the power cord and contact an authorized service centre.
- Do not modify or extend the power cable.
- Ensure that the socket outlet is properly grounded, and that the earth pin on the power cord is not damaged or removed from the power plug. For more details on grounding, inquire at an LG Electronics customer information centre.
- This appliance is equipped with a power cord having an equipment-grounding conductor and a grounding power plug. The power plug must be plugged into an appropriate socket outlet that is installed and grounded in accordance with all local codes and ordinances.
- Do not plug the appliance into a multi socket adapter which does not have a power cable (mounted).
- The appliance should be connected to a dedicated power line which is separately fused.
- Do not use a multi outlet power board when connecting this appliance. It should be plugged into a single outlet wall socket.
- Install the appliance in a place where it is easy to unplug the power plug of the appliance.
- Be careful not to point the power plug up or let the appliance lean against the power plug.
- Install the appliance on a firm and level floor.
- Do not install the appliance in a damp and dusty place. Do not install or store the appliance in any outdoor area, or any area that is subject to weathering conditions such as direct sunlight, wind, rain, or temperatures below freezing.
- Do not place the appliance in direct sunlight or expose it to the heat from heating appliances such as stoves or heaters.
- Be careful not to expose the rear of the appliance when installing.

- Be careful not to let the appliance door fall during assembly or disassembly.
- Be careful not to pinch, crush, or damage the power cable during assembly or disassembly of the appliance door.
- Do not connect a plug adapter or other accessories to the power plug.
- Do not damage the refrigerant circuit.
- Do not use mechanical devices or other means to accelerate the defrosting process.
- When discarding the appliance, remove the door gasket while leaving the shelves and baskets in place and keep children away from the appliance.
- Dispose of all packaging materials (such as plastic bags and styrofoam) away from children. The packaging materials can cause suffocation.
- Keep ventilation openings, in the appliance enclosure or in the built-in structure, clear of obstruction.
- Do not use electrical appliances inside the refrigerator.
- The refrigerant and insulation blowing gas used in the appliance require special disposal procedures. Consult with service agent or a similarly qualified person before disposing of them.
- This appliance is intended to be used in household and similar applications only. It should not be used for commercial, or catering purposes, or in any mobile application such as a caravan or boat.
- Do not store explosive substances such as aerosol cans with a flammable propellant in this appliance.
- Refrigerant leaking out of the pipes could ignite or cause an explosion.
- The amount of refrigerant in your particular appliance is shown on the identification plate inside the appliance.
- Never start up an appliance showing any signs of damage. If in doubt, consult your dealer.

Risk of Fire and Flammable Materials



This symbol alerts you to flammable materials that can ignite and cause a fire if you do not take care.

- This appliance contains a small amount of isobutane refrigerant (R600a), but it is also combustible. When transporting and installing the appliance, care should be taken to ensure that no parts of the refrigerating circuit are damaged.
- If a leak is detected, avoid any naked flames or potential sources of ignition and air the room in which the appliance is standing for several minutes. In order to avoid the creation of a flammable gas air mixture if a leak in the refrigerating circuit occurs, the size of the room in which the appliance is used should correspond to the amount of refrigerant used. The room must be 1 m² in size for every 8 g of R600a refrigerant inside the appliance.
- When positioning the appliance, ensure the supply cord is not trapped or damaged.
- Do not locate multiple portable socket-outlets or portable power supplies at the rear of the appliance.

Children in the Household

- If the appliance is equipped with a lock (some models only), keep the key out of reach of children.

Operation

- Do not use the appliance for any purpose (storage of medical or experimental materials or medication that requires strict temperature control) other than any domestic household food storage use.
- Unplug the power plug during a severe thunderstorm or lightening or when not in use for a long period of time.
- Do not touch the power plug or the appliance controls with wet hands.

- Do not bend the power cable excessively or place a heavy object on it.
- If water penetrates electrical parts of the appliance, disconnect power plug and contact an LG Electronics customer information centre.
- Do not place hands or metallic objects inside the area emitting the cold air, cover or heat releasing grille on the back.
- Do not apply excessive force or impact to the back cover of the appliance.
- Do not put animals, such as pets into the appliance.
- Be careful of nearby children when you open or close the appliance door. The door may bump the child and cause injury.
- Avoid the danger of children getting trapped inside the appliance. A child trapped inside the appliance can cause suffocation.
- Do not place heavy or fragile objects, containers filled with liquid, combustible substances, flammable objects (such candles, lamps, etc.), or heating devices (such as stoves, heaters, etc.) on the appliance.
- If there is a gas leakage (isobutane, propane, natural gas, etc.), do not touch the appliance or power plug and ventilate the area immediately. This appliance uses a refrigerant gas (isobutane, R600a). Although it uses a small amount of the gas, it is still combustible gas. Gas leakage during appliance transport, installation or operation can cause fire, explosion or injury if sparks are caused.
- Do not use or store flammable or combustible substances (ether, benzene, alcohol, chemical, LPG, combustible spray, insecticide, air freshener, cosmetics, etc.) near the appliance.
- Immediately unplug the power plug and contact an LG Electronics customer information centre if you detect a strange sound, odour, or smoke coming from the appliance.
- Fill with potable water only into icemaker or dispenser water tank.
- Do not place any electronic appliance (such as heater and mobile phone) inside the appliance.

Maintenance

- Disconnect the power cord before cleaning the appliance or replacing the inside lamp (where fitted).
- Securely plug the power plug in the socket outlet after completely removing any moisture and dust.
- Never unplug the appliance by pulling on the power cable. Always grip the power plug firmly and pull straight out from the socket outlet.
- Do not spray water or inflammable substances (toothpaste, alcohol, thinner, benzene, flammable liquid, abrasive, etc.) over the interior or exterior of the appliance to clean it.
- Do not clean the appliance with brushes, cloths or sponges with rough surfaces or which are made of metallic material.
- Only qualified service personnel from LG Electronics service centre should disassemble, repair, or modify the appliance. Contact an LG Electronics customer information centre if you move and install the appliance in a different location.
- Do not use a hair drier to dry the inside of the appliance or place a candle inside to remove the odours.

CAUTION

To reduce the risk of minor injury to persons, malfunction, or damage to the product or property when using this product, follow basic precautions, including the following:

Installation

- Do not tilt the appliance to pull or push it when transporting.
- Make sure not to get a body part such as a hand or foot stuck while moving the appliance.

Operation

- Do not touch frozen food or the metal parts in the freezer compartment with wet or damp hands. It may cause frostbite.
- Do not place glass containers, bottles or cans (especially those containing carbonated drinks) in the freezer compartment, shelves or ice bin that will be exposed to temperatures below freezing.
- The tempered glass on the front side of the appliance door or the shelves can be damaged by an impact. If it is broken, do not touch it with hands.
- Do not hang from the appliance doors, storage room, shelf or climb up into it.
- Do not store an excessive amount of water bottles or containers for side dishes on the door baskets.
- Prevent animals from nibbling on the power cable or water hose.
- Do not open or close the appliance door with excessive force.
- If the hinge of the appliance door is damaged or operates improperly, stop using the appliance and contact an authorized service centre.
- Do not clean glass shelves or covers with warm water when they are cold. They may break if exposed to sudden temperature changes.
- Never eat frozen foods immediately after they have been taken out in the freezer compartment.
- Do not use a thin crystal cup or chinaware when dispensing.
- Make sure not to get a hand or foot stuck upon opening or closing the appliance door or door in door.

Maintenance

- Do not insert the shelves upside down. The shelves may fall.
- To remove frost from the appliance, contact an LG Electronics customer information centre.

PRODUCT FEATURES

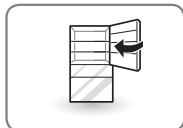
EN

- Depending on the model, some of the following functions may not be available.



DOOR ALARM

The Door Alarm function is designed to prevent refrigerator malfunctioning that could occur if a refrigerator door or freezer door remains open. If a refrigerator door or freezer door is left open for more than 60 seconds, a warning alarm sounds in 30 second intervals until it is closed.



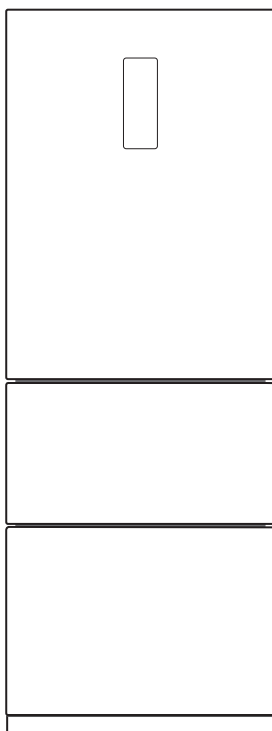
AUTO CLOSING HINGE

The refrigerator doors close automatically with a slight push. (The door only closes automatically when it is open at an angle less than 30°.)

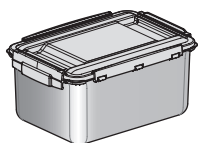
INSTALLATION

EN

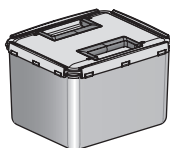
Compartments



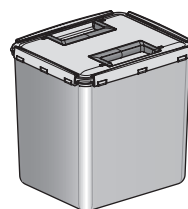
Owner's Manual



Kimchi storage container 1
(AKC67523415, 11.7L)



Kimchi storage container 2
(AKC67523721, 11.3L)



Kimchi storage container 3
(AKC67523722, 17.1L)

- The appearance or components of the appliance may differ from model to model.

Notes for Movement and Transport

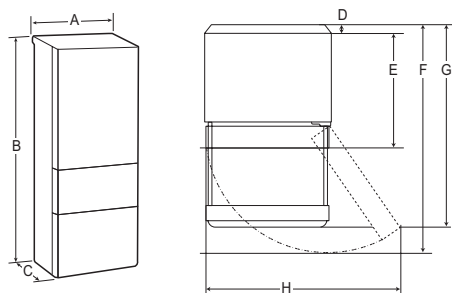
- Remove all food from inside the appliance. Then, transport the appliance only after fixing fragile parts such as shelves and the door handle with tape. Failure to do so may cause appliance damage.
- Pull the power plug out, insert and fix it into the power plug hook at the rear or on top of the appliance. Failure to do so may cause damage to the power plug or floor scratch.
- When transporting the appliance, more than two people should transport the appliance carefully. Dropping the appliance, which is extremely heavy, may cause personal injury or appliance failure.
- When transporting the appliance over a long distance, keep the appliance upright. The appliance may fall over, causing malfunctions. Never transport the appliance laying down as it can cause a refrigerant circulation malfunction when it is turned back on again.

Notes for Installation

- Install the appliance on a solid and flat area.
 - If the appliance is installed on an uneven floor, it can cause vibration and noise causing the appliance to fall resulting in injury. It could also cause the doors not to close correctly and introduce moisture inside the unit during operation.
 - If the appliance front or rear is not level, adjust the front feet so that it can be corrected. Severe cases may need the floor to be packed out with strips of thin timber.
- Avoid placing the unit near heat sources, direct sunlight or moisture.
- Connect the power supply cord (or plug) to the outlet. Don't double up with other appliances on the same outlet.
- After connecting the power supply cord (or plug) to the outlet, Wait two or three hours before you put food into the appliance. If you add food before the appliance has cooled completely, your food may spoil.
- After installing the appliance, connect the power plug into a socket outlet. Before moving and discarding the appliance, disconnect the plug from the socket outlet.

Dimensions and Clearances

- Too small of a distance from adjacent items may result in degradation of freezing capability and increased electricity costs. Allow over 50mm clearance from each adjacent wall when installing the appliance.



-	Size
A	666 mm
B	1802 mm
C	737 mm
D	27 mm
E	710 mm
F	1292 mm
G	1142 mm
H	1015 mm

NOTE

- You can determine what type of appliance it is by looking at the label inside the fridge compartment.

Ambient Temperature

- The appliance is designed to operate within a limited range of ambient temperatures, depending on the climate zone. Do not use the appliance at a temperature exceeding the limit.
- The internal temperatures could be affected by the location of the appliance, the ambient temperature, the frequency of door opening and so on.
- The climate class can be found on the rating label.

Climate Class	Ambient Temperature Range °C
SN (Extended Temperate)	+10 - +32
N (Temperate)	+16 - +32
ST (Subtropical)	+16 - +38
T (Tropical)	+16 - +43 / +10 - +43*

*Australia, India, Kenya

NOTE

- The appliances rated from SN to T are intended to be used at an ambient temperature between 10 °C and 43 °C.

Leveling

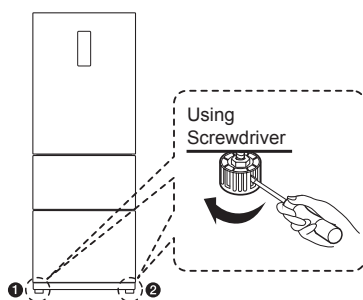
- Aligning the doors may not be possible if the floor is not level, or is of weak or poor construction.

The refrigerator is heavy and should be installed on a rigid and solid surface. Wood flooring may cause leveling difficulties if it flexes excessively.

- If the floor is uneven, level the refrigerator to avoid noise and vibration.

CAUTION

- Adjust the front leveling feet so they are lower than the wheels. The weight of the refrigerator must rest on the feet, not the wheels, to avoid risk of movement of tipover.



To level the refrigerator, use a screwdriver to turn the leveling feet until they are in firm contact with the floor. The front of the refrigerator can be slightly higher than the rear to make shutting the doors easier.

Before use



Clean the refrigerator.

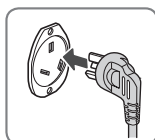
Clean your refrigerator thoroughly and wipe off all dust that may have accumulated during shipping.

⚠ CAUTION

- Do not scratch the refrigerator with a sharp object or use a detergent that contains alcohol, a flammable liquid or an abrasive when removing any tape or adhesive from the refrigerator.
- Do not peel off the model or serial number label or the technical information on the rear surface of the refrigerator.

NOTE

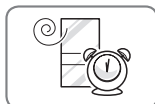
- Remove adhesive residue by wiping it off with your thumb or dishwashing detergent.



Connect the power supply.

Check if the power supply is connected before use.

Read the "Turning On The Power" section. (Your plug type might be different from the picture.)

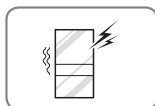


Wait for the refrigerator to cool.

Allow your refrigerator to run for at least three to four hours before putting food in it. Check the flow of cold air in the freezer compartment to ensure proper cooling.

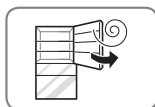
⚠ CAUTION

- Putting food in the refrigerator before it has cooled could cause the food to spoil, or a bad odor could remain inside the refrigerator.



The refrigerator makes a loud noise after initial operation.

This is normal. The loudness will decrease as the temperature lowers.



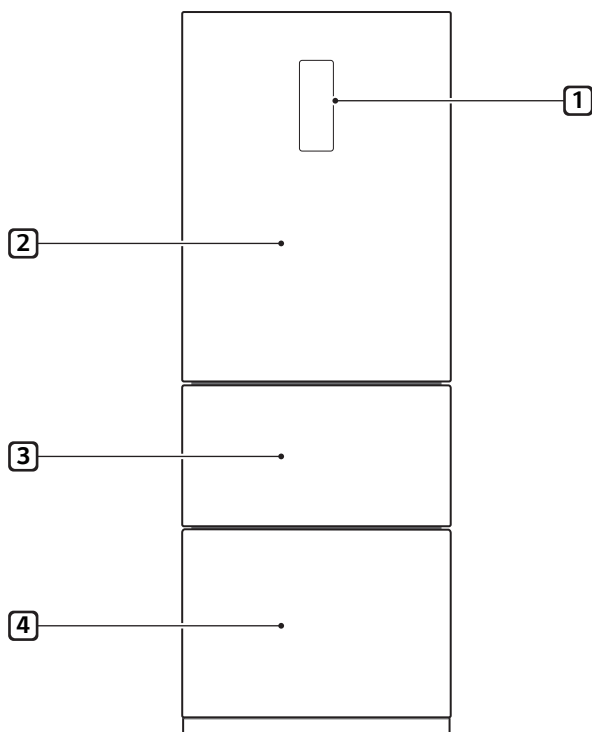
Before Plugging in, open the refrigerator doors to ventilate the interior.

The inside of the refrigerator may smell like plastic at first. Remove any adhesive tape from inside the refrigerator and open the refrigerator doors for ventilation until any odors have subsided.

Use this page to become more familiar with the parts and features of your refrigerator.
Page references are included for your convenience.

*The appearance and specifications of the actual product may differ depending on the model.

Parts and Functions (Applicable to some models only)



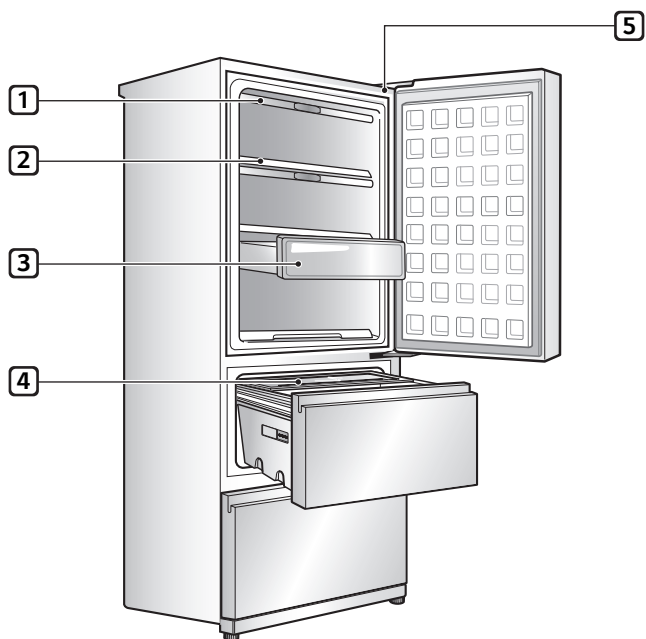
1 LED Display

Displays the refrigerator and freezer's target temperature and CustomChill settings.

3 Middle

4 Bottom

2 Top



1 Flap-up Cover

2 Shelf

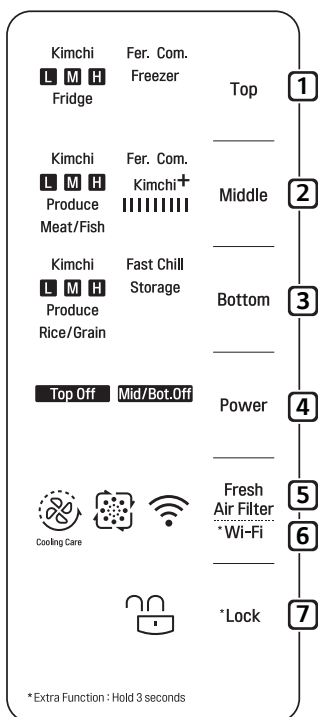
3 Shelf Basket

4 Multi Basket

5 Smart Diagnosis

Control Panel (Applicable to some models only)

Control Panel Features



1 Top

- This sets Kimchi, Fridge, Fer. Com. and Freezer.

2 Middle

- This sets Kimchi, Produce, Meat/Fish, Fer. Com. And Kimchi+.

3 Bottom

- This sets Kimchi, Produce, Rice/Grain, Fast Chill And Storage.

4 Power

- This sets power off setting button. You can save electricity by turning off the unused refrigerator compartment(Top, Middle/ Bottom)
- If you press the power off button, The Top turns off → The Middle / Bottom turns off → The Top / Middle / Bottom turns off → The Top / Middle / Bottom turns on.

⚠ CAUTION

Please note that the Middle / Bottom are turned off at the same time. Any food left in a turned-off compartment may be damaged.

5 Fresh Air Filter

- This sets the Fresh Air Filter.

6 Wi-Fi

- This sets the refrigerator to connect to your home's Wi-Fi network.

7 Lock

- This locks the buttons on the control panel.

NOTE

- Temperature Information

Top Compartment

Low Freezer – Kimchi H – Kimchi M – Kimchi L - Fridge **High**

Middle Compartment

Low Meat/Fish – Kimchi H – Kimchi M – Kimchi L - Produce **High**

Bottom Compartment

Low Kimchi H – Kimchi M – Kimchi L - Produce – Rice/Grain **High**

Notes for Use of the Control Panel

- The control panel will turn on in any of the following cases.
 - When the power is turned on
 - When a button is pressed
 - When the appliance door is opened
- The control panel will turn off automatically for energy saving in any of the following cases.
 - When one minute has passed after turning on the power
 - When no button operation is carried out for 60 seconds after a desired button is pressed
 - When 60 seconds has passed after the appliance door is opened and closed
- When the power-saving function is operational, the control panel window will turn off except the Lock lamp.

Setting Functions

- Select the button for your desired function.
- Each time you press the button, the following functions will show up sequentially:

[Top]

Kimchi : M → H → L

➡ Fridge : M → H → L → Freezer ➡ Fer. Com.

[Middle]

Kimchi : M → H → L

➡ Produce : M → H → L ➡ Meat/Fish

➡ Kimchi+ ➡ Fer. Com.

[Bottom]

Kimchi : M → H → L

➡ Vege/Fruit : M → H → L ➡ Rice/Grain

➡ Storage ➡ Fast Chill

Fer. Com(Fermentation)

- This function detects the external temperature and then ripens Kimchi.
- Select another function if you wish to cancel "Fer."
- If you set the Ripen function, "Fer." will be turned on.
- Once Ripen has been completed, "Fer. Com." will be turned on and Kimchi M will be set.
- If you press the Lock button when Ripen has been completed, "Fer. Com." will be turned off.

NOTE

- The completion time is subject to change depending on seasonality, surrounding temperature and Kimchi temperature.

Fridge

- Stores refrigerated foods.

NOTE

- If you store Kimchi after setting the Fridge, the Kimchi will get sour in taste fast.

Freezer

- Stores frozen foods.

NOTE

- If you store Kimchi after setting the Freezer, the Kimchi will get frozen.

Produce

- You can store vegetables and fruits and keep them fresh for a long time.

Meat/Fish

- You can store meat and fish and keep them fresh.

NOTE

- If you store Kimchi after setting Meat/Fish, the Kimchi will get frozen.

Kimchi+

- Implement a temperature at which *Leuconostoc* grows well and then cool rapidly so that Kimchi can be stored preserving good taste for a long time.
- The gauge displays the degree of ripeness. Once the gauge gets filled up, help yourself to Kimchi. (About 6 days are required.)
- Apply to freshly prepared Kimchi only.

NOTE

- Apply once only. If you apply twice or more times, Kimchi may get sour in taste.
- Notice) Apply to cabbage Kimchi. Lightly-salted Kimchi can get frozen.

Storage

- Minimizes changes in taste in order to store Kimchi for a long time.

Fast Chill

- Use this setting to store commercially prepared kimchi. Kimchi purchased in a store has already been fermented, so it is best to cool it as rapidly as possible.

Fresh Air Filter

- This is the function to quickly circulate the air inside the refrigerator for deodorization inside the refrigerator.

Wi-Fi

- The Wi-Fi button, when used with the LG ThinQ application, allows the refrigerator to connect to a home Wi-Fi network.
- The Wi-Fi icon shows the status of the refrigerator's network connection. The icon illuminates when the refrigerator is connected to the Wi-Fi network.
- Press and hold the Wi-Fi button for 3 seconds to connect to the network. The icon blinks while the connection is being made, then turns on once the connection is successfully made.

Notes for Operation

- Do not use the ice water dispenser tank for beverages other than drinking water.
- Users should keep in mind that frost can form. If the door is not closed completely, if the humidity is high during the summer, or if the freezer door is opened frequently.
- Ensure there is sufficient space between food stored on the shelf or door basket to allow the door to close completely.
- Opening the door lets warm air enter the appliance, and may cause the internal temperature to rise.
- Do not open or close the appliance door excessively.
- The LED lamp is only intended for use in domestic appliances and is not suitable for household room illumination.
- If you are leaving the appliance turned off for an extended period of time, remove all food and unplug the power cord. Clean the interior, and leave the doors slightly ajar to prevent mold from growing in the appliance.

NOTE

- The 2-star section (******) basket or drawer can be used to store ice and food from -12 °C to -18 °C for short periods.
- When using the top compartment as a freezer setting, that compartment becomes a 2-star section. (optional)

Suggestion for Energy Saving

- Ensure there is sufficient space between stored foods. This allows cold air to be circulated evenly and lowers electricity bills.
- Store hot food only after it has cooled in order to prevent dew or frost.
- Do not put food near the temperature sensor of the fridge compartment. Keep a distance of at least 3 cm from the sensor.
- Please note that a temperature rise after defrosting has a permissible range in the appliance specifications. If you wish to minimise the impact this may have on the food storage due to a temperature rise, seal or wrap the stored food in several layers.
- The automatic defrosting system in the appliance ensures that the compartment remains free of ice buildup under normal operating conditions.

Storing Food

Storing Foods Effectively

- Store frozen food or refrigerated food inside sealed containers.
- Check the expiration date and label (storage instructions) before storing food in the appliance.
- Do not store food for a long period of time (more than four weeks) if it spoils easily at a low temperature.
- Place the refrigerated food or frozen food in each fridge or freezer compartment immediately after purchasing.
- Avoid refreezing any food which has been completely thawed. Freezing any food which has been completely thawed again will lower its taste and nutrition.
- Do not wrap and store vegetables with newspaper. Printing material of newspaper or other foreign substances may smear and contaminate food.
- Do not overfill the appliance. Fill less than 70% of the space. Cold air can not circulate properly if the appliance is overfilled.
- Cool hot food before storing. If too much hot food is placed inside, the internal temperature of the appliance can increase and negatively affect other foods stored in the appliance.
- If you set an excessively low temperature for food, it may become frozen. Do not set a temperature lower than the required temperature for the food to be stored correctly.
- Always keep the appliance clean.
- If there are chill compartments in the appliance, do not store vegetables and fruits with higher moisture content in the chill compartments as they may freeze due to the lower temperature.
- In the event of a blackout, call the electricity company and ask how long it is going to last.
 - You should avoid door openings while the power is off.
 - When the power supply gets back to normal, check the condition of the food.

Maximum Storage

- To get better air circulation, insert all Kimchi Storage Containers.
- If large quantities of food are to be stored, all the Kimchi storage containers and Flip-up covers shall be taken out of the appliance and the food shall be stacked directly on the freezer shelves in the freezer compartment.

NOTE

- The shape of each container may be different, insert in the right position.

Food Storage Tips

- **Storing Vegetables and Fruit**
The moisture left on vegetables after washing can make them spoil faster. Wait to wash vegetables until just before use. Leafy greens like kale or lettuce have a limited storage life. Wrap them in newspaper or in sealed containers to help them stay fresh longer.
- **Do not store tropical fruits in the refrigerator.**
Bananas or uncut pineapples are damaged by cold temperatures.
- To store dried seafood, select "Produce" for the middle compartment and adjust the storage temperature to "low".
- Store vegetables or fruit in the designated containers to prevent them from freezing in the middle or lower compartment.
- Store rice or grain in the bottom compartment using the Rice/Grain setting.
- To avoid freezing vegetables, do not store them using the Storage setting on the bottom compartment.
- To avoid freezing kimchi, do not store it using the Meat/Fish setting on the middle compartment.

Tips for Storing Kimchi

- **Do not overfill the kimchi containers.**
Allow space for the kimchi to expand as it ferments or the contents may overflow the container. Close the container lids completely to prevent the kimchi from fermenting too quickly or developing yeast mold.
Fill the container with kimchi up to the fill line and make sure the lid is tightly closed before storing. Cover the surface of the kimchi with plastic wrap to extend the storage time.
- **Do not place kimchi directly into the refrigerator compartment or store it in a plastic bag.**
Use the kimchi container provided to store kimchi. Kimchi placed directly into the refrigerator compartment may freeze and taste off. Do not block the air outlet inside the refrigerator with food. Doing so could cause the food to freeze, affect product performance, or result in electric shock or injury.
- **For best results, check on kimchi within 3 to 4 days of storing it.**
If the kimchi has overflowed from the container, it may ferment too quickly and not store well.
- **Do not place foods that require different storage conditions in the same compartment.**
Select the appropriate settings for the food being stored.
- **Be sure to use enough salt when preparing kimchi for longer storage.**
The rate of fermentation is mostly determined by the amount of salt in the kimchi. Small batches of mild kimchi can be successfully stored for short periods, but add more salt if storing large amounts for use over an extended period.
- **Use care when placing kimchi containers in the refrigerator.**
Lift the container by the handles and avoid impacts to the bottom of the container.
(The appearance of kimchi containers may vary by model.)

A Guide to Kimchi

- **The first step in fermenting kimchi is salt pickling.**
The salt reacts with enzymes in the cabbage to break down proteins and begin fermentation immediately. This process continues even at cold temperatures. Traditionally, kimchi was allowed to ferment slowly during the cold winter weather.
- **The taste of kimchi also depends on the seasonings used.**
Typical seasonings include green onion, garlic, ginger, salted fish, and chili powder. The combination of spices chosen determines the overall taste of the kimchi.
- **Fermentation Rates for Kimchi**
Adding a lot of garlic, seafood, onions, chili powder, cucumber or green onions makes kimchi ferment more quickly. Adding salted oysters, salted shrimp or persimmon sauce really speeds up fermentation. On the other hand, adding leeks, mustard or ginseng slows down fermentation.
- **Kimchi begins fermenting as soon as it is prepared.**
Contact with air will make kimchi sour. If the kimchi is not covered in sauce or has too little salt, a thin skin of yeast will form on its surface. Keep air away from the vegetables by covering them in sauce or placing the kimchi in a plastic bag or covering it with plastic wrap.
- **How Temperature Affects Kimchi**
Temperature affects the fermentation rate of kimchi. When preparing kimchi for long-term storage, keep the temperature below 10 °C.
- **Long-Term Storage of Kimchi**
Like cheese, kimchi is a living organism and will change over time. To keep kimchi fresh for long periods, increase the salt content and store at a low temperature, near 0°C. Press vegetables down so they are covered with sauce and cover the container with plastic wrap or a layer of cabbage leaves to keep air out and keep kimchi fresh longer.

- **Choosing the Right Cabbage for Kimchi**

There are many different kinds of cabbage available. For kimchi, choose a medium sized cabbage which is rounded rather than long and thin. The inner leaves should be sweet and paler than the outer leaves. Outer leaves should be thin and light green.

- **Selecting Radishes for Kimchi**

There are many types of radish kimchi, and different radishes are used for different types of kimchi.

For radish kimchi, use Korean radishes that have pale green tops and well-spread leaves. For chonggak (young radish) kimchi, use Seoul radishes that have round, thick bottoms. For kkakdugi (cubed radish kimchi), try to find radishes with white rather than green tops. For dongchimi, use radishes with soft leaves and white rather than green tops.

Proper Food Storage Techniques

- **Store kimchi in the kimchi container.**

Fill the container with kimchi only up to the fill line and make sure the lid is tightly closed before storing.

If the lid is not closed properly, a thin film of yeast can form on the surface of the kimchi or the kimchi may ferment too quickly. Cover the surface of the kimchi with plastic wrap or a layer of cabbage leaves before storing it to prevent yeast from forming.

- **Store vegetables or fruits in the designated container.**

Some vegetables and fruits are damaged by cold air. For best results, don't wash vegetables before storing them.

Do not refrigerate tropical fruits like bananas or pineapples, which are damaged by cold temperatures.

- **Allow hot food to cool to room temperature before refrigerating it.**

Placing hot food directly into the refrigerator can raise the temperature of surrounding food items, leading to spoilage and higher utility bills.

- **Long-Term Storage of Kimchi**

Place newly prepared kimchi into the refrigerator and select the Kimchi setting. Depending on the type and saltiness of the kimchi, select the Low, Medium, or High setting. For best long-term storage, make sure the vegetables are completely submerged in the sauce and cover the kimchi with plastic wrap.

- **Storing Purchased Kimchi**

If kimchi will be consumed within a short time, select the Fast Chill setting. If kimchi will be stored for a long time, select the Storage setting.

- **Before storing vegetable oils in the refrigerator, read the storage instructions on the container.**

Vegetable oil bottles can become messy with use. Place oil bottles in disposable or left over plastic containers to avoid having to clean refrigerator shelves.

- **Select the appropriate temperature for the Food being stored.**

Storing kimchi at the Fermentation setting may cause it to spoil.

Some types of kimchi may freeze if stored at the High setting. Check on kimchi often when using the High setting. Storing other food along with kimchi in a storage container may result in the other food freezing.

- **Using the Different Containers**

For best results when using the Fridge setting, store containers which are similar in size, smaller containers, or bottles.

- Storing kimchi in the provided kimchi container in the designated position makes the most delicious kimchi.
- Do not store kimchi in glass bottles. The kimchi will expand when frozen and the bottle may break, causing a risk of injury.
- Do not place containers near the air outlet in the refrigerator. The food may freeze.

- **Fermenting Kimchi**

Avoid opening the compartment door while kimchi is fermenting. Allowing the warmer outside air in during fermentation can affect the taste of the kimchi.

- **Getting Rid of Food Odors**

Cover open food containers with plastic wrap before storing to prevent transfer of odors inside the refrigerator.

- **After installation, allow the refrigerator to cool completely before storing food.**

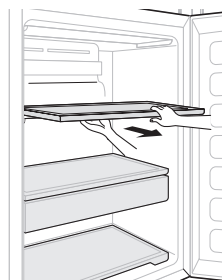
Food may spoil and cause odors to linger if it is stored before the refrigerator has been allowed to reach the set temperature.

- * If the proper basket is not used, the performance of the refrigerator may be degraded.

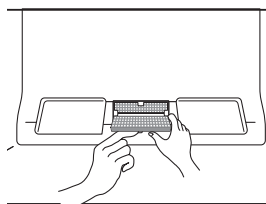
Recycling the Fresh Air Filter of the top compartments

You can remove the odors absorbed by the Fresh Air Filter and reuse it.

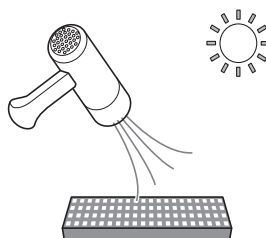
1 Pull out the shelf in top compartments



2 Press on the hook inside the upper compartment, then take out the Fresh Air Filter.



3 Dry it by using a hair dryer or exposing it to sunlight. The filter is reusable.



- To increase deodorizing performance, a natural palm wood material is attached to the filter. If residue falls off, it will not harm you and can be wiped off easily with a towel or cloth.

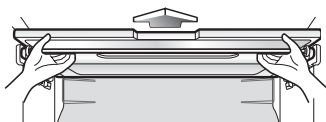
Adjusting the Refrigerator Shelves

The shelves in your refrigerator are adjustable to meet your individual storage needs. Your model may have either glass or wire shelves.

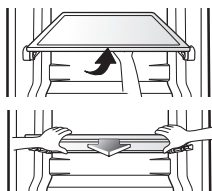
Adjusting the shelves to fit different heights of items will make finding the exact item you want easier. Doing so will also reduce the amount of time the refrigerator door is open which will save energy.

Detaching the Shelf

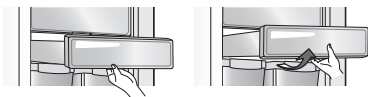
- Hold one side of the shelf and pull it out while squeezing it to the other side.



- Lift the rear part slightly and pull it out.



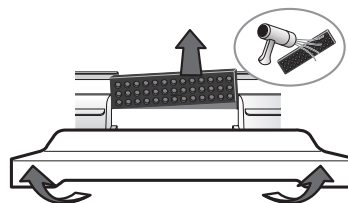
- When removing the upper 3rd-layer basket, lift the basket up slightly and pull it out. When reinserting the basket, align it with the grooves at both ends and push it inside. (Remove all content inside the baskets before removing it from the refrigerator.)



- When removing the shelf, remove all content on it, pull the basket all the way out, hold the front of the shelf with both hands, lift it up at an angle and pull it out.



- After removing the 4th-layer shelf at the left/right compartments, hold the deodorizer with the hand and remove it from the back wall of the refrigerator. The deodorizer is reusable.



* Gently lift and pull out the shelf.

- * Depending on the model, the shelves and cold insulation cover may not be present or differ from the figures in their shapes.

CustomChill Drawer

The CustomChill Drawer provides storage space with a variable temperature control that can be adjusted to keep the compartment either colder or warmer than the refrigerator.

Use it to store meat and seafood, cold drinks, deli snacks, or chilled wine.

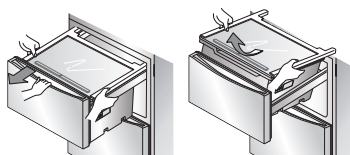
CustomChill Drawer Disassembly

The Mid Drawer

Raise the Mid drawer slightly, lift the basket up and remove it while the roller is pulled out halfway. (The basket is released when the upper door is open.)

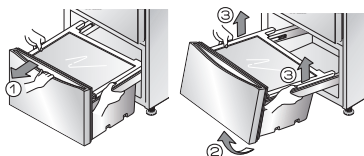
When reinserting the basket, put the basket in while the roller is pulled out halfway, lift the drawer up slightly, align it with the roller, and push it in.

※ When removing or mounting the middle drawer, be sure to open the door at the upper compartment.



The Bottom Drawer

- 1 Open the drawer completely.
- 2 Pull up the drawer slightly and pull it out. (When you hear the knocking sound, the drawer will no longer be pulled or pushed.)
- 3 Remove the Bottom drawer by lifting it with full power as shown in the figure.

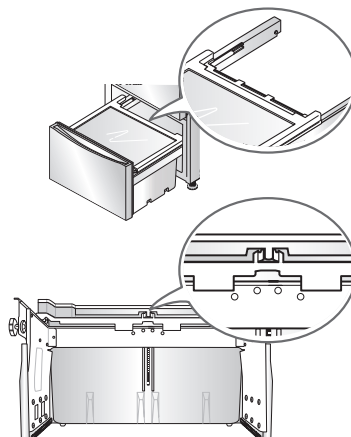


When reinserting the basket, insert the drawer to the refrigerator and lift the left roller of the drawer to align and push it in. If you hear a knocking sound, lift it up slightly and keep pushing it in.



- ※ When removing or mounting the middle drawer, be sure to open the doors at the left/right compartments.
- ※ You need to remove the baskets together with the middle/lower drawers. Removing only the baskets is impossible.

CAUTION

- When removing the lower drawer, be careful as you may hurt your foot.
- The lower doors may be heavy, and your back may be hurt when removing them. Be sure to remove the content before removing them.



LG ThinQ Application

This feature is only available on models with the  or .

The **LG ThinQ** application allows you to communicate with the appliance using a smartphone.

LG ThinQ Application Features

Communicate with the appliance from a smart phone using the convenient smart features.

Smart Diagnosis

- If you experience a problem while using the appliance, this smart diagnosis feature will help you diagnose the problem.

Settings

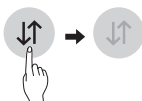
- Allows you to set various options on the appliance and in the application.

NOTE

- If you change your wireless router, Internet service provider, or password, delete the registered appliance from the **LG ThinQ** application and register it again.
- The application is subject to change for appliance improvement purposes without notice to users.
- Functions may vary by model.

Before Using LG ThinQ Application


- 1 Check the distance between the appliance and the wireless router (Wi-Fi network).
 - If the distance between the appliance and the wireless router is too far, the signal strength becomes weak. It may take a long time to register or installation may fail.
- 2 Turn off the **Mobile data** or **Cellular Data** on your smartphone.



- 3 Connect your smartphone to the wireless router.



NOTE


- To verify the Wi-Fi connection, check that **Wi-Fi**  icon on the control panel is lit.
- The appliance supports 2.4 GHz Wi-Fi networks only. To check your network frequency, contact your Internet service provider or refer to your wireless router manual.
- **LG ThinQ** is not responsible for any network connection problems or any faults, malfunctions, or errors caused by network connection.
- If the appliance is having trouble connecting to the Wi-Fi network, it may be too far from the router. Purchase a Wi-Fi repeater (range extender) to improve the Wi-Fi signal strength.
- The Wi-Fi connection may not connect or may be interrupted because of the home network environment.
- The network connection may not work properly depending on the Internet service provider.
- The surrounding wireless environment can make the wireless network service run slowly.
- The appliance cannot be registered due to problems with the wireless signal transmission. Unplug the appliance and wait about a minute before trying again.
- If the firewall on your wireless router is enabled, disable the firewall or add an exception to it.
- The wireless network name (SSID) should be a combination of English letters and numbers. (Do not use special characters.)
- Smartphone user interface (UI) may vary depending on the mobile operating system (OS) and the manufacturer.
- If the security protocol of the router is set to **WEP**, you may fail to set up the network. Please change it to other security protocols (**WPA2** is recommended) and register the product again.

Installing the LG ThinQ Application

Search for the **LG ThinQ** application from the Google Play Store or Apple App Store on a smart phone.

- Follow instructions to download and install the application.

Connecting to Wi-Fi

The Wi-Fi button, when used with the **LG ThinQ** application, allows the appliance to connect to a home Wi-Fi network. The  icon shows the status of the appliance's network connection. The icon illuminates when the appliance is connected to the Wi-Fi network.


Initial Appliance Registration

- Run the **LG ThinQ** application and follow the instructions in the application to register the appliance.

Re-registering the Appliance or Registering Another User

- Press and hold the Wi-Fi button for 3 seconds to temporarily turn it off. Run the **LG ThinQ** application and follow the instructions in the application to register the appliance.

NOTE

- To disable the Wi-Fi function, press and hold the Wi-Fi button for 3 seconds.  icon will be turned off.

RF Radiation Exposure Statement

This equipment shall be installed and used at a minimum distance of 20 cm from the human body.

Open Source Software Notice Information



To obtain the source code under GPL, LGPL, MPL, and other open source licenses, that is contained in this product, please visit <http://opensource.lge.com>.

In addition to the source code, all referred license terms, warranty disclaimers and copyright notices are available for download.

LG Electronics will also provide open source code to you on CD-ROM for a charge covering the cost of performing such distribution (such as the cost of media, shipping, and handling) upon email request to opensource@lge.com.

This offer is valid for a period of three years after our last shipment of this product. This offer is valid to anyone in receipt of this information.

Smart Diagnosis

This feature is only available on models with the  or  logo.

Use this feature to help you diagnose and solve problems with your appliance.

NOTE

- For reasons not attributable to LGE's negligence, the service may not operate due to external factors such as, but not limited to, Wi-Fi unavailability, Wi-Fi disconnection, local app store policy, or app unavailability.
- The feature may be subject to change without prior notice and may have a different form depending on where you are located.

Using LG ThinQ to Diagnose Issues

If you experience a problem with your Wi-Fi equipped appliance, it can transmit troubleshooting data to a smartphone using the **LG ThinQ** application.

- Launch the **LG ThinQ** application and select the **Smart Diagnosis** feature in the menu. Follow the instructions provided in the **LG ThinQ** application.

Using Audible Diagnosis to Diagnose Issues

Follow the instructions below to use the audible diagnosis method.

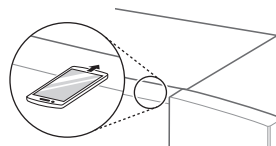
- Launch the **LG ThinQ** application and select the **Smart Diagnosis** feature in the menu. Follow the instructions for audible diagnosis provided in the **LG ThinQ** application.

- 1 Press and hold the **Lock** button to activate the lock function.
 - If the display has been locked for over 5 minutes, you must deactivate the lock and then reactivate it.

* Lock



- 2 Press and hold the **Bottom** button for 3 seconds or longer.
- 3 Open the top door and then hold the phone on the upper right speaker hole.



- 4 After the data transfer is complete, the diagnosis will be displayed in the application.

NOTE

- For best results, do not move the phone while the tones are being transmitted.

Cleaning

- Both the refrigerator and freezer sections defrost automatically; however, clean both sections about once a month to prevent odors.
- Wipe up spills immediately.
- Always unplug the refrigeration before cleaning.

General Cleaning Tips

- Unplug refrigerator or disconnect power.
- Remove all removable parts, such as shelves, crispers, etc.
- Use a clean sponge or soft cloth and a mild detergent in only warm water. Do not use abrasive or harsh cleaners.
- Hand wash, rinse and dry all surfaces thoroughly.

Notes for Cleaning

- When removing a shelf or drawer from inside the appliance, remove all stored foods from the shelf or drawer to prevent injury or damage to the appliance. Otherwise, injury may occur due to the weight of stored foods.
- If cleaning the outside air vents of the appliance by means of vacuuming, then the power cord should be unplugged from the outlet to avoid any static discharge that can damage the electronics or cause an electric shock.
- Detach the shelves and drawers and clean them with water, and then dry them sufficiently, before replacing them.
- Regularly wipe the door gaskets with a wet soft towel.
- Door basket spills and stains should be cleaned as they can compromise storage ability of the basket and could even be damaged.
- After cleaning, check if the power cable is damaged, warm or improperly plugged.
- Keep the air vents on the exterior of the appliance clean.
Blocked air vents can cause fire or appliance damage.

- Waxing external painted metal surfaces helps provide rust protection. Do not wax plastic parts. Wax painted metal surfaces at least twice a year using appliance wax (or auto paste wax). Apply wax with a clean, soft cloth.
- When cleaning the inside or outside of the appliance, do not wipe it with a rough brush, toothpaste, or flammable materials. Do not use cleaning agents containing flammable substances.
This may cause discoloration or damage to the appliance.
Flammable substances: alcohol (ethanol, methanol, isopropyl alcohol, isobutyl alcohol, etc.), thinner, bleach, benzene, flammable liquid, abrasive, etc.
- For the appliance exterior, use a clean sponge or soft cloth and a mild detergent in warm water. Do not use abrasive or harsh cleaners. Dry thoroughly with a soft cloth.
- Never clean the shelves or containers in the dishwasher.
The parts may become deformed due to the heat.
- If the appliance is equipped with an LED lamp, do not remove lamp cover and LED lamp in any attempt to repair or service it.
Please, contact the LG Electronics customer information centre.

Exterior

Waxing external painted metal surfaces helps provide rust protection. Do not wax plastic parts. Wax painted metal surfaces at least twice a year using appliance wax (or auto paste wax). Apply wax with a clean, soft cloth.

For products with a stainless steel exterior, use a clean sponge or soft cloth and a mild detergent in warm water. Do not use abrasive or harsh cleaners. Dry thoroughly with a soft cloth.

CAUTION

- Do not use a rough cloth or sponge when cleaning the interior and exterior of the refrigerator.
- Do not place your hand on the bottom surface of the refrigerator when opening and closing.

WARNING

Use non-flammable cleaner. Failure to do so can result in fire, explosion, or death. Always remove power cord from the wall outlet prior to cleaning in the vicinity of electrical parts (lamps, switches, covers, controls, etc.).

Wipe up excess moisture with a sponge or cloth to prevent water or Liquid from getting into any electrical part and causing an electric shock.

Never use metallic scouring pads, brushes, coarse abrasive cleaners, Strong alkaline solutions, industrial detergent (bleach containing detergent) Flammable or toxic cleaning liquids on any surface. Do not use Hot water to clean the interior or any interior parts of the unit when they are cold.

Inside Walls (allow freezer to warm up so the cloth will not stick)

To help remove odors, you can wash the inside of the refrigerator with a mixture of baking soda and warm water. Mix 2 tablespoons of baking soda to 1 litre of warm water. Be sure the baking soda is completely dissolved so it does not scratch the surfaces of the refrigerator.

Door Liners and Gaskets

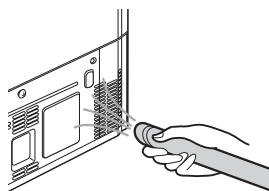
Use a clean sponge or soft cloth and a mild detergent in warm water. Do not use cleaning waxes, concentrated detergents, bleaches, or cleaners containing petroleum on plastic refrigerator parts.

Plastic Parts (covers and panels)

Use a clean sponge or soft cloth and a mild detergent in warm water. Do not use window sprays, abrasive cleansers, or flammable fluids. These can scratch or damage the material.

Condenser Coil Cover

Use a vacuum cleaner with an attachment to clean the condenser cover and vents located at the rear of the appliance. Do not remove the panel covering the condenser coil area. Always disconnect the main power before cleaning.



TROUBLESHOOTING

EN

Review the Troubleshooting section before calling for service; doing so will save you both time and money.

Problem	Possible Causes	Solutions
There is no refrigeration or freezing.	Is there a power interruption?	• Check the power of other appliances.
	If the power plug unplugged from the outlet?	• Plug the power plug in the outlet properly.
	Is the power supply 220 V?	• If it is 110 V, then use a transformer.
	If you are using a transformer, is the power lamp off?	• Turn on the power lamp for the transformer.
There is poor refrigeration or freezing.	Is the storage temperature set to 'L'?	• Set it to 'M'.
	Is the fridge or freezer temperature set to its warmest setting?	• Set the fridge or freezer temperature to 'M'.
	Is the appliance in direct sunlight, or is it near a heat generating object such as cooking oven or heater?	• Check the installation area and reinstall it away from heat generating objects.
	Did you store hot food without cooling it first?	• Cool the hot food first before putting it inside the fridge or freezer.
	Did you put in too much food?	• Maintain an appropriate space between food.
	Are the appliance doors completely closed?	• Completely close the door and make sure that stored food is not obstructing in the door.
	Is there enough space around the appliance?	• Adjust the installation position to make enough space around the appliance.
	Did you install the product where the ambient temperature is between 5°C and 43°C?	• Install the product where the ambient temperature is between 5°C and 43°C.
	Is the control panel set to Produce or Rice/Grain?	• In the Control panel, select the proper function for the type of foods stored.
	Is the middle or bottom shelf incorrectly assembled?	• Assemble the middle or bottom shelf correctly.

Problem	Possible Causes	Solutions
Refrigerated foods are frozen.	Is the storage temperature set to 'H'?	• Set it to 'M' or lower.
	Did you put moist and easy-to-freeze foods near the cold air exit?	• Put them on the outer edge of the shelf.
	Did you put moist and easy-to-freeze foods on the upper shelf of the refrigeration compartment?	• Put them on the bottom shelf.
	Is the control panel set to Meat/Fish, Kimchi or Long term?	• In the Control panel, select the proper function for the type of foods stored.
	Did you put foods in the container provided?	• Put foods in the container provided.
The appliance contains a bad smell.	Is the storage temperature set to 'L'?	• Set it to 'M'.
	Did you put in food with a strong smell?	• Store foods with strong smells in sealed containers.
	Is the Kimchi container cover open?	• Completely close the Kimchi container cover.
The inside lamp in the appliance does not turn on.	Does the inside lamp in the appliance turn off?	• It is hard for customers to replace the inside lamp in the appliance as they are not serviceable. If the inside lamp does not turn on, please contact the LG Electronics customer information center.
The appliance door is not closed tightly.	Is the appliance leaning forward?	• Adjust the front feet to raise the front side slightly.
	Were the shelves properly assembled?	• Refit the shelves if needed.
	Did you close the door with excessive force?	• If you apply too much force or speed when closing the door, it may remain briefly open before closing. Make sure that you do not slam the door closed. Close without force.
	Are the foods stored on the shelf touching the ceiling of the product?	• Do not let the foods touch the ceiling.

Problem	Possible Causes	Solutions
It is difficult to open the appliance door.	Did you open the door right after you closed it?	<ul style="list-style-type: none"> If you try to open the appliance door within 1 minute after you closed it, you may have difficulties because of the pressure inside the appliance. Try to open the appliance door again in a few minutes so that the internal pressure stabilizes.
There is condensation inside the appliance or on the bottom of the vegetable drawer cover.	Did you store hot food without cooling it first?	<ul style="list-style-type: none"> Cool the hot food first before putting it inside the fridge or freezer.
	Did you leave the appliance door open?	<ul style="list-style-type: none"> Although the condensation will disappear soon after you close the appliance door, you can wipe it with a dry cloth.
	Do you open and close the appliance door frequently?	<ul style="list-style-type: none"> Condensation can form due to the temperature difference from the outside. Wipe out the dampness with a dry cloth.
	Did you put warm or moist food inside without sealing it in a container?	<ul style="list-style-type: none"> Store food in a covered or sealed container.
Frost is formed in the compartment set to Freeze.	Doors may not be closed properly?	<ul style="list-style-type: none"> Check if the food item inside the appliance is blocking the door and make sure that the door is tightly closed.
	Did you store hot food without cooling it first?	<ul style="list-style-type: none"> Cool the hot food first before putting it inside the fridge or freezer.
	Is the air entry or exit of the freezer blocked?	<ul style="list-style-type: none"> Make sure that air entry or exit is not blocked so that the air can circulate inside.
	Is the freezer overfilled?	<ul style="list-style-type: none"> Maintain an appropriate space between items.
Frost or condensation has formed inside or outside the appliance.	Did you open and close the appliance door frequently or is the appliance door improperly closed?	<ul style="list-style-type: none"> Frosts or condensation can form if the outside air penetrates inside the appliance.
	Is the installation environment humid?	<ul style="list-style-type: none"> Condensation can appear on the exterior of the appliance if the installation area is too humid or on a humid day such as a rainy day. Wipe off any moisture with a dry cloth.

Problem	Possible Causes	Solutions
The appliance is noisy and generates abnormal sounds.	Is the appliance installed on a weak floor or improperly leveled?	• Install the appliance on a solid and flat area.
	Does the rear of the appliance touch the wall?	• Adjust the installation position to allow enough clearance around the appliance.
	Are objects scattered behind the appliance?	• Remove the scattered objects from behind the appliance.
	Is there an object on top of the appliance?	• Remove the object on top of the appliance.
The side or front of the appliance is warm.	There are anti condensation pipes fitted to these areas of the appliance to reduce condensation forming from around the door area.	• The heat releasing pipe to prevent condensation is installed on the front and side of the appliance. You may feel it particularly hot right after the appliance is installed or during the summer. You can be assured that this is not a problem and is quite normal.
The bottom side of the product is warm or there is warm air coming from the back.	Did you install the product not too long ago?	• Right after installation, the compressor will operate very hard to cool it down quickly. So, you can expect warmth or warm air at the bottom right. After cooling down, the warm air will be gone. So do not worry.
The internal wall of the product is warm.	Did you touch it when the product is operating?	• To maintain the optimal temperature, the cold air and the hot air will take turns to control the temperatures, causing the inner wall to be warm. It is not a malfunction, so keep using the product as usual.
Clicking noises	The defrost control will click when the automatic defrost cycle begins and ends. The thermostat control (or appliance control on some models) will also click when cycling on and off.	• Normal Operation

Problem	Possible Causes	Solutions
Rattling noises	Rattling noises may come from the flow of refrigerant, the water line on the back of the unit (for plumbed models only), or items stored on top of or around the appliance.	• Normal Operation
	Appliance is not resting evenly on the floor.	• Floor is weak or uneven or leveling legs need to be adjusted. See the door alignment section.
	Appliance with linear compressor was moved while operating.	• Normal operation. If the compressor does not stop rattling after 3 minutes, turn the power to the appliance off and then on again.
Whooshing noises	Evaporator fan motor is circulating air through the fridge and freezer compartments.	• Normal Operation
	Air is being forced over the condenser by the condenser fan.	• Normal Operation
Gurgling noises	Refrigerant flowing through the cooling system	• Normal Operation
Popping noises	Contraction and expansion of the inside walls due to changes in temperature.	• Normal Operation
Vibrating	If the side or back of the appliance is touching a cabinet or wall, some of the normal vibrations may make an audible sound.	• To eliminate the noise, make sure that the sides and back do not make any contact with any wall or cabinet.
Kimchi gets sour too quickly.	Is the control panel set to "Fer.", "Kimchi" or "Fridge"?	• In the control panel, select the proper function for the type of foods stored.
	Is the control panel set to Fresh Kimchi (MIN)?	• Set it to Fresh Kimchi (MID) or higher. Please note that if you select Fresh Kimchi (MAX), Kimchi may get frozen.
	Is the door or shelf closed properly?	• Close the door or shelf properly.

Problem	Possible Causes	Solutions
There are white fungus on the surface of Kimchi.	Is the Kimchi container cover open?	<ul style="list-style-type: none"> Close the cover completely. If the cover does not close completely, the Kimchi may contact with air to generate oxidation yeasts (white fungus). Cover up the surface of Kimchi with wraps or hygienic vinyl to store it for a longer time.
The power is off for some compartments.	Is the control panel set to "Top Off" or "Mid/Bot. Off"?	<ul style="list-style-type: none"> Change to other settings.
Kimchi is soggy and less chewy.	Did you add an adequate amount of salt or seafood seasoning when you made Kimchi?	<ul style="list-style-type: none"> If you add too little salt then it will look good but the enzyme contained in the Kimchi will make it less chewy and soggy. Also, seafood seasoning can affect Kimchi in terms of ripening it quickly or making it soggy.
Your home appliance and smartphone is not connected to the Wi-Fi network.	The password for the Wi-Fi that you are trying to connect to is incorrect.	<ul style="list-style-type: none"> Find the Wi-Fi network connected to your smartphone and remove it, then register your appliance on LG ThinQ.
	Mobile data for your smartphone is turned on.	<ul style="list-style-type: none"> Turn off the Mobile data of your smartphone and register the appliance using the Wi-Fi network.
	The wireless network name (SSID) is set incorrectly.	<ul style="list-style-type: none"> The wireless network name (SSID) should be a combination of English letters and numbers. (Do not use special characters.)
	The router frequency is not 2.4 GHz.	<ul style="list-style-type: none"> Only a 2.4 GHz router frequency is supported. Set the wireless router to 2.4 GHz and connect the appliance to the wireless router. To check the router frequency, check with your Internet service provider or the router manufacturer.
	The distance between the appliance and the router is too far.	<ul style="list-style-type: none"> If the distance between the appliance and the router is too far, the signal may be weak and the connection may not be configured correctly. Move the location of the router so that it is closer to the appliance.

Memo

