



ENGLISH

SIMPLE MANUAL

# 3D Blu-ray™ / DVD Home Theater System

To view the instructions of advanced features,  
visit <http://www.lg.com> and then download Owner's Manual.  
Some of the content in this manual may differ from your unit.

MODEL  
LHB645N



[www.lg.com](http://www.lg.com)

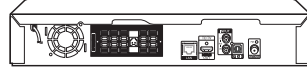


## Front Panel



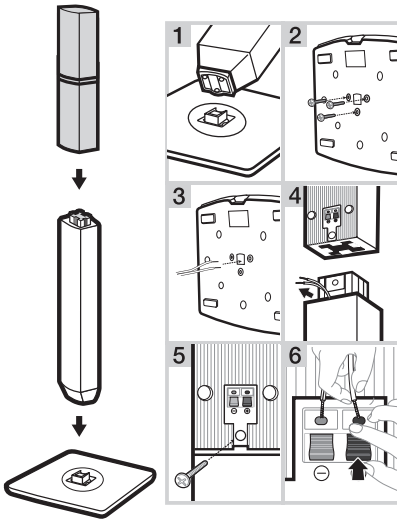
- MIC 1/2** ..... Connects a microphone.
- USB Port** ..... Connect a USB device.
- △** ..... Disc Tray Open / Close
- >||** ..... Starts / Pauses playback.
- ..... Stops playback.
- F** ..... Changes the input source or function.
- / +** ..... Adjusts volume.
- ⏻ / |** ..... Power On / Off

## Rear Panel



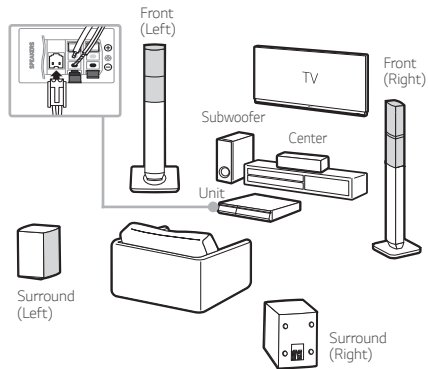
- SPEAKERS** ..... Connect to speakers.
- LAN** ..... Connect to Internet.
- HDMI OUT TO TV** ..... Connect to TV.
- AUX (L/R) INPUT** ..... Connect to analogue device.
- OPTICAL IN** ..... Connect to digital device.
- ANTENNA FM** ..... Connect to radio antenna.

## 1 Speaker Assembling



## 2 Speaker Connection

! Speaker design and connection method may be different according to models.



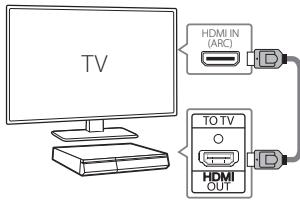
### 3

## TV Connection

Connect with the Player and TV using HDMI ARC (A) or HDMI & Optical (B).

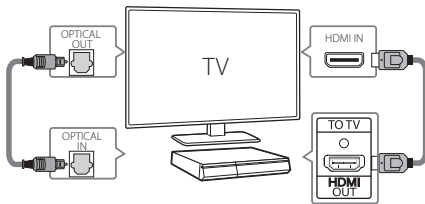
### A HDMI(ARC) Connection

- 1 Connect the Player to the TV using HDMI cable.
- 2 Set the input selector to HDMI on the TV.
- 3 Set up [External Speaker (HDMI ARC)] on your TV setting menu.
- 4 Follow the instructions on the TV screen using remote control.



### B HDMI & Optical Connection

- 1 Connect the Player to the TV using HDMI & Optical cable.
- 2 Set the input selector to HDMI on the TV.
- 3 Set up [External Speaker (Optical)] on your TV setting menu.
- 4 Follow the instructions on the TV screen using remote control.



### 4

## Home Menu

After initial setup, Home menu appears on the TV screen. Enjoy various functions on the player.



To enjoy online services, the player should be connected to internet through wired or wireless connection.

### Controller App



Download the LG AV Remote App to your device.

### LG Sound Sync (Wireless)



For more information, download the online owner's manual. <http://www.lg.com>

### Private Sound Mode




### With *musicflow*



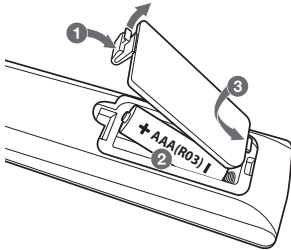
## Additional Information

### Specification

Power requirements	Refer to the main label.
Power consumption	Refer to the main label.
Dimensions (W x H x D)	Approx. 360 mm x 60.5 mm x 299 mm
Bus Power Supply (USB)	5 V  500 mA
Amplifier (Total RMS output power)	1,000 W RMS

Design and specifications are subject to change without notice.

### Replacement of battery



### IMPORTANT SAFETY NOTICE

The cord grip for the plug fitted to this product is built into the existing power cord as supplied. If, for any reason you need to shorten the cord.

#### DO NOT RE-USE THE PLUG.

A new plug must be used to ensure your continued safety by securing the plug to the power cord in accordance with Plug & Socket Regulations 1994.

### Open Source Software Notice Information

To obtain the source code under GPL, LGPL, MPL, and other open source licenses, that is contained in this product, please visit <http://opensource.lge.com>. In addition to the source code, all referred license terms, warranty disclaimers and copyright notices are available for download. LG Electronics will also provide open source code to you on CD-ROM for a charge covering the cost of performing such distribution (such as the cost of media, shipping, and handling) upon email request to [opensource@lge.com](mailto:opensource@lge.com). This offer is valid for three (3) years from the date on which you purchased the product.

### Customer Support

You can update the Player using the latest software to enhance the products operation and/or add new features. To obtain the latest software for this player (if updates have been made), proceed the software updates or visit <http://www.lg.com> or contact LG Electronics customer care center.





-----

-----

-----

-----

-----

-----

-----

-----

-----

-----

### **SAFETY PRECAUTION**

THIS EQUIPMENT MUST BE DISCONNECTED FROM THE MAINS POWER SUPPLY WHEN IT IS NOT IN USE. DO NOT ALLOW THIS UNIT TO BE EXPOSED TO RAIN OR MOISTURE.

### **CAUTION**

TO PREVENT ELECTRIC SHOCK, DO NOT REMOVE THE COVER. NO USER SERVICEABLE PARTS ARE INSIDE. REFER SERVICING TO QUALIFIED PERSONNEL.

The working life of this set is 7 years since the date of delivery to consumer. Upon the expiry of the said period, it might be unsuitable for the use according to their designation.

## **PRECAUTIONS**

Please read these precautions before you operate this unit.

- Avoid extreme heat, cold, moisture and dust.
- Avoid using near a magnetic field. (This will adversely affect the units performance.)
- Be careful when the surface of the case is wiped with a volatile agent such as benzene, alcohol, thinner, etc. or a chemically processed cloth, the surface finish may deteriorate or its coating may peel.
- Use the unit only in a horizontal position, and do not place anything heavy on it.
- Keep the unit away from flower vases, tubs, sinks, etc. If any liquids should spill into unit, serious damage could occur. In that case, please consult qualified service personnel.
- Do not obstruct the ventilation holes: they prevent overheating. Even soft materials such as paper and cloth may prevent proper ventilation of the unit.
- **There are no serviceable parts inside. For service, please contact your service centre.**

**JEDDAH MAIN SERVICE CENTER**  
**P.O.BOX 704, JEDDAH 21421 KINGDOM OF SAUDI ARABIA**  
**TEL) 02-629-2929**

**JEDDAH QUICK SERVICE CENTER**  
**TEL) 02-663-3888 EXT. 340,343**

**RIYADH BRANCH SERVICE CENTER**  
**TEL) 01-461-5559**

**AL KHOBAR BRANCH SERVICE CENTER**  
**TEL) 03-857-2629/2637**