



SIMPLE MANUAL

Mini Hi-Fi System

To view the instructions of advanced features,
visit <http://www.lg.com> and then download Owner's Manual.
Some of the content in this manual may differ from your unit.

MODEL
CM9760



ENGLISH

DEUTSCH

FRANÇAIS

NEDERLANDS

SLOVENŠČINA

ITALIANO

ESPAÑOL

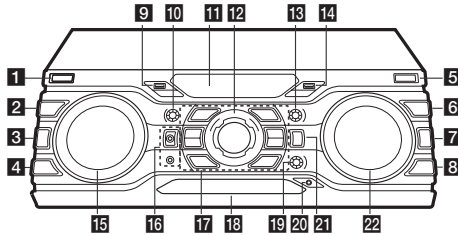
EAHNIKA

PORTUGUÊS

www.lg.com

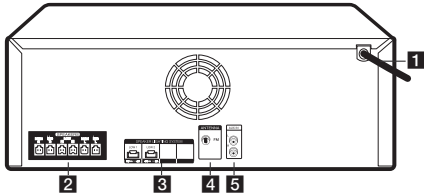


Front Panel



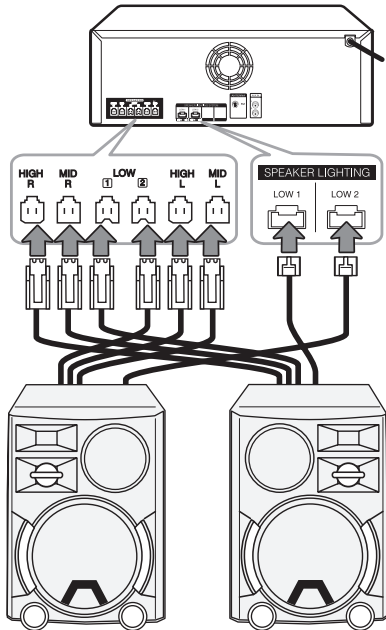
- 1** (Power)
Turn the power on or off.
- 2** **DJ EFFECT**
Selects a desired DJ effect (FLANGER, PHASER, WAH, DELAY) and rotate EFFECT LEVEL to adjust the DJ EFFECT level.
- 3** **USER EQ**
Selects the sound effect created by your own.
- 4** **REGION EQ / BASS BLAST**
- Chooses region equalizer
- Press and hold to select BASS effect directly.
- 5** **USB REC / DEMO**
Records to USB. / Shows Demo mode.
- 6** **SEARCH**
Moves to folder or file in selection mode.
- 7** **OK**
Selects a folder when searching a file.
- 8** **LIGHTING / VOICE CANCELLER**
- Turns on/off the lighting effects.
- You can enjoy the function while playing the music, by reducing singer vocal of music in the various source.
Press and hold to switch this mode on or off.
- 9** **USB 1 Port**
You can play or record sound files by connecting the USB device.
- 10** **BASS**
Adjusts BASS sound level when setting USER EQ.
- 11** Display window
- 12** **MASTER VOLUME**
Adjusts speaker volume.
- 13** **TREBLE**
Adjusts TREBLE sound level when setting USER EQ.
- 14** **USB 2 Port**
You can play or record sound files by connecting the USB device.
- 15** **SCRATCH / DJ EFFECT CONTROL**
Turn clockwise or counterclockwise to make Scratch sound. / Adjust DJ EFFECT level.
- 16** **MIC 1 / 2 jack**
Connect a microphone.
- 17** / **RDS**
- Stops playback or cancels DELETE function.
- Radio Data System
- >||**
- Starts or pauses playback.
- Selects Stereo/Mono.
-
- Opens and closes the disc tray.
- KEY CHANGER**
Changes the key to suit your vocal range.
- CLUB, DRUM, USER (DJ PRO)**
Selects CLUB, DRUM or USER sound effect to mix (If you want to use USER, you have to register a source with "Music Flow Bluetooth" app.)
- 1, 2, 3, 4 (DJ PRO PAD)**
Press a desired sound pad
- 18** Disc tray
- 19** **MIC VOL / KEY CONTROL**
- Controls microphone's volume.
- Changes the key to suit your vocal range.
- 20** **PORT. IN jack**
Connect a portable device.
- 21** **F (Function) / WIRELESS LINK**
- Selects the function and input source.
- Press and hold for 3 seconds to select WIRELESS PARTY LINK mode.
- 22** **I<< SEARCH >>I**
- Searches a folder or a file.
- Selects the radio stations.

Rear Panel




- 1** Power cord
- 2** SPEAKERS connector
- 3** SPEAKER LIGHTING SYSTEM
Connect the speaker lighting cables.
- 4** ANTENNA (FM)
- 5** AUX IN (L/R)
Connect an auxiliary device.

Speaker Connection



Additional Information

Specifications

Power Requirements	Refer to the main label on the unit.
Power Consumption	Refer to the main label on the unit. Networked standby : 0.5 W (If all network ports are activated.)
Dimensions (W x H x D)	Approx. 450 mm x 160 mm x 355 mm
Net Weight	Approx. 6.2 kg
Bus Power Supply (USB)	5 V  500 mA
Amplifier (Total RMS output power)	3,300 W

Design and specifications are subject to change without notice.

Controller App



Download the **Music Flow Bluetooth** App to your device.

LG Sound Sync (Wireless)



For more information, download the online owner's manual. <http://www.lg.com>

Additional Information

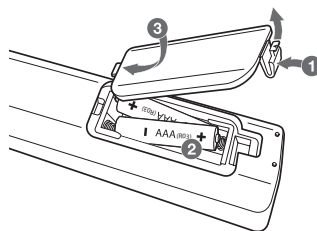
Caution

- When you use the multiple socket, it is advisable to use 15 A socket. 10 A socket may cause power off due to lack of power supply.
- Do not place objects on the speakers. It may cause the objects to fall and make property damage.
- Install the speakers on a firm surface not to slide. The vibration caused by the strong output can shake and move the speakers.
- Avoid turning up max volume in a small enclosed space. The powerful and intense output of the speakers can shake the ceiling and get the objects in the room falling.
- To protect from hearing damage, keep the sufficient distance from the speaker. The overwhelming sound from the speaker may cause a person's hearing damage.
- Allow more than 20 cm of free space between the main set and the speakers when you install the main set on the ground. High sound pressure from the speakers can make the set tremble to disturb the CD playback.
- Connect the power cord to wall outlet directly if possible. Or when you use an extension cable, it is highly recommended to use an extension cable of 110 V / 15 A or 230 V / 15 A, otherwise the unit may not operate properly because of the lack of power supply.
- Do not overload the extension cord with excessive electrical load.

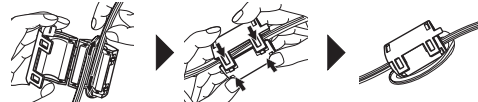
How to disconnect the wireless network connection or the wireless device

Turn off the unit by pressing the power button for more than 5 seconds.

Replacement of battery



About Ferrite Core (Optional)



Wind power cord cable, SPEAKER cables and SPEAKERS LIGHTING SYSTEM cables around the ferrite core.

Declaration of Conformity

CE 0197

Hereby, LG Electronics European Shared Service Center B.V, declares that this MINI HI-FI SYSTEM is compliant with the essential requirements and other relevant provisions of Directive 1999/5/EC. The complete Declaration of Conformity may be requested through the following postal address:

LG Electronics European Shared Service Center B.V.
Krijgsman 1
1186 DM Amstelveen
The Netherlands

or can be requested at our dedicated DoC website:

<http://www.lg.com/global/support/cedoc/cedoc#>

This device is a 2.4 GHz wideband transmission system, intended for use in all EU member states and EFTA countries.