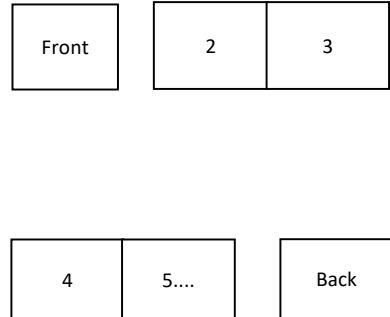


Printing Specification

1. Specification

1. Specification		1.1 Folding / Cover	
Models	1. Model Name:	27GR95QE	
	2. Suffix:	WZ	
	3. Part No:	MBM67534407	
	4. REV	REV00	
SIZE	5. Number of pages	12	
	6. Folded/Unfolded	Unfolded	
	7. Trim size (W x H)_Unfolded (mm)	210 X 148 (A5)	
	8. Trim size (W x H)_folded (mm)	-	
COVER	9. Bindery	Saddle stitching	
	10. Color (Cover)	1	
	11. Paper (Cover)	Wood free	
	12. Weight (cover) (g/m ²)	80	
INNER	13. Color (inner)	1	
	14. Paper (inner)	Wood free	
	15. Weight (inner) (g/m ²)	80	
	16. Coating	-	
	17. Thomson	-	
	18. Sub-material	-	
	19. Languages	POR_BR (1)	



2. Origin Notification

<p>Copyright © 2021 LG Electronics Inc. All Rights Reserved.</p> <p>Printed in Korea ← Printed in [Country Name in English]</p> <p>Copyright © 2021 LG Electronics inc. Tous droits réservés.</p> <p>Imprimé en Corée ← Imprimé en(au) [Country Name in French]</p> <p>www.lg.com</p>	<p>[Country Name] (ENG/FRE)</p> <p>LGERS/ LGEMX : Printed in Mexico Imprimé au Mexique</p> <p>LGEKR: Printed in Korea Imprimé en Corée</p> <p>LGEMA: Printed in Poland Imprimé en Pologne</p> <p>LGEND: Printed in China Imprimé en Chine</p> <p>LGEIN: Printed in Indonesia Imprimé en Indonésie</p> <p>Others: Each Country name.</p>
<p>[Restriction of Hazardous Substances]</p> <p>Hazardous substances on this product should be satisfied by substance regulation of Level A-I, A-II, SVHC according to LG(52)B-5011 standard. Especially, Part should be followed and controlled the following specification.</p> <p>(1) Hazardous substances test report should be submitted when part certification test and first mass production.</p> <p>(2) Especially, Don't use or contain lead (Pb) and cadmium (Cd) in ink.</p> <p>INK REQUIREMENT FOR EU</p> <p>(1) The amount of MOAH/MOSH must be less than 0.1% of the weight of the INK used.</p> <p>*MOAH(Mineral Oil Aromatic Hydrocarbons) : Consisting of 1 to 7 aromatic cycles</p> <p>*MOSH(Mineral Oil Saturated Hydrocarbons) : Consisting of 16 to 35 carbon atoms</p> <p>(2) From 01 January 2025 : Ban on the use of MOAH in INK up to a limit of one part per million(1ppm) for compounds of 3 to 7 aromatic cycles</p>	

3. History

REV07				
REV06				
REV05				
REV04				
REV03				
REV02				
REV01				
REV00	09/26/2023	-	-	Checked : Waenxiu.chao
				Approved : Ming.ye
Rev. Number	Date	Description	ECO Number	Owner
				QIAN YU



Guia Rápido de Instalação



27GR95QE 27GR95QL
27GS95QE

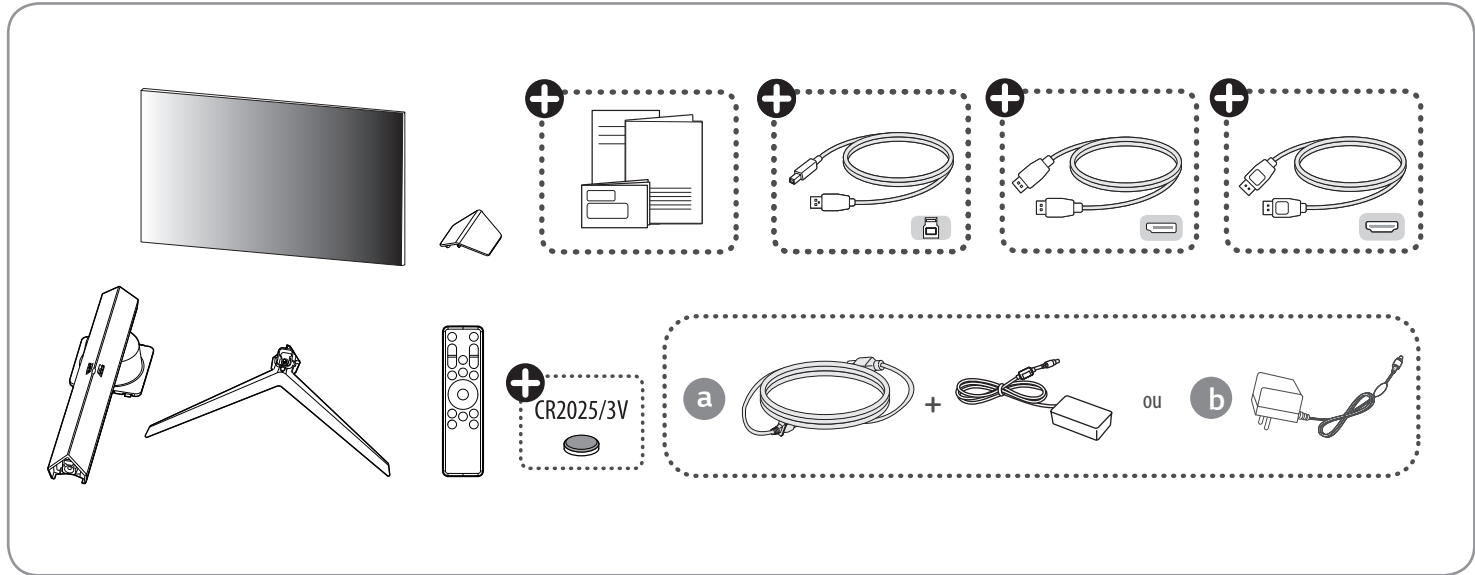


(2309-REV00)



www.lg.com

Copyright © 2023 LG Electronics Inc. Todos os direitos reservados.



+ Dependendo do País

• Para baixar o manual completo e drivers do monitor visite o site: www.lg.com/br/suporte
Pesquise o modelo desejado e baixe os arquivos em seu computador.

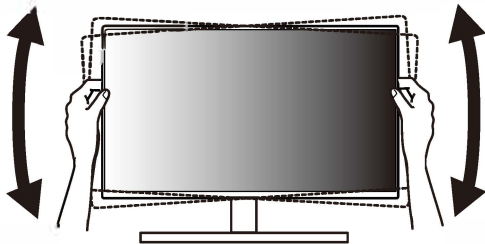
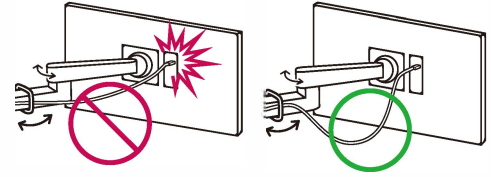
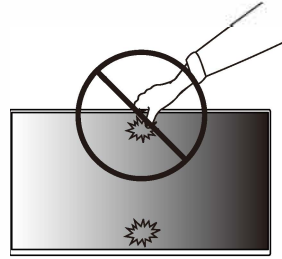
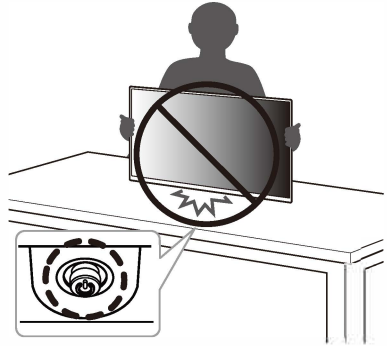


É recomendável usar os componentes fornecidos.



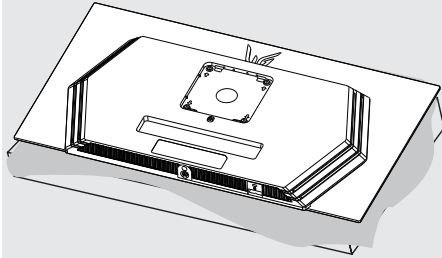
www.lg.com

Você pode fazer download dos manuais na Web deste produto nos seguintes sites.

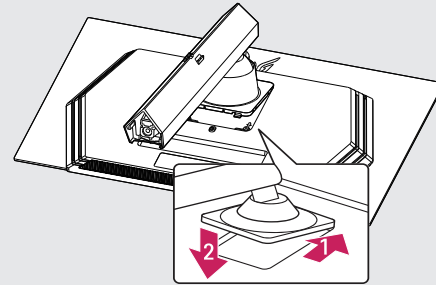




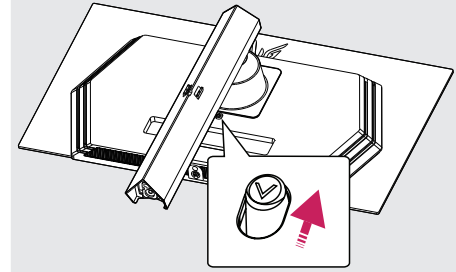
1



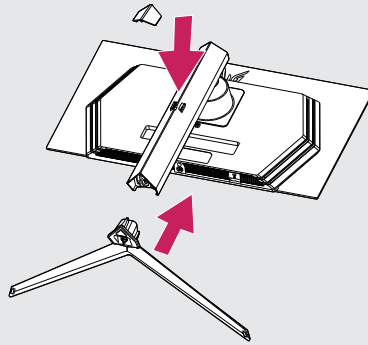
2



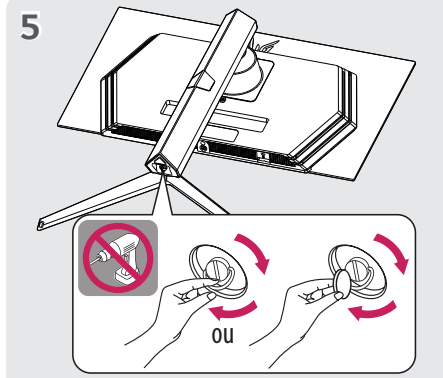
3



4

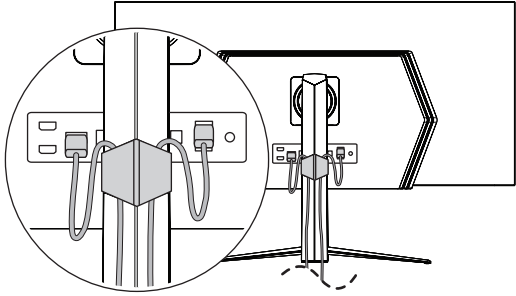


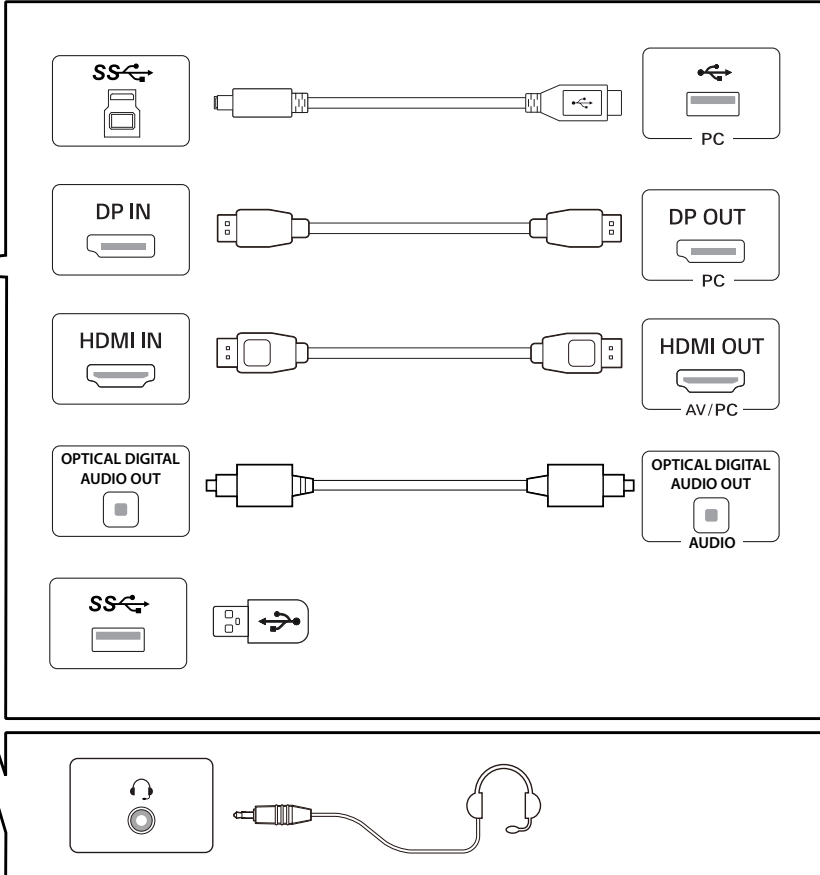
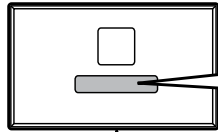
5



6

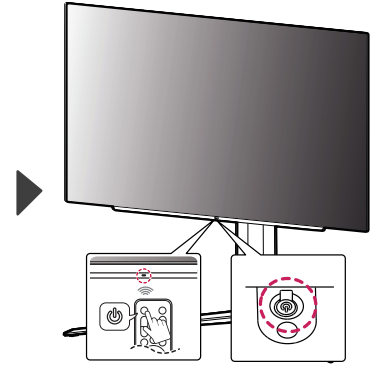
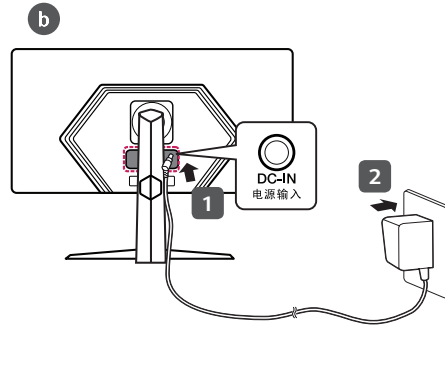
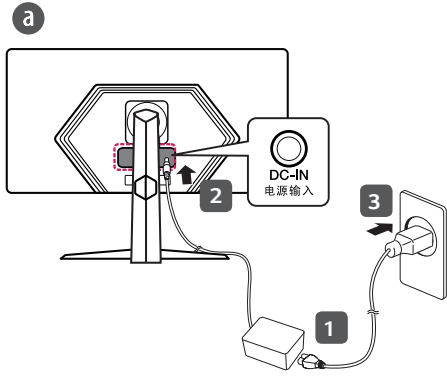


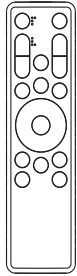






- A utilização de cabos DVI para HDMI ou DP (DisplayPort) para HDMI podem causar problemas de compatibilidade.
- A porta USB no produto funciona como um hub USB.
- Certifique-se de usar o cabo fornecido. Caso contrário, isso poderá fazer com que o dispositivo não funcione corretamente.





CR2025 / 3V

