

SIMPLE MANUAL

Micro Hi-Fi Audio

To view the instructions of advanced features,
visit <http://www.lg.com> and then download Owner's Manual.
Some of the content in this manual may differ from your unit.

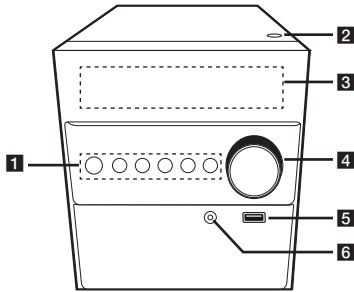
MODEL
CM1560



www.lg.com

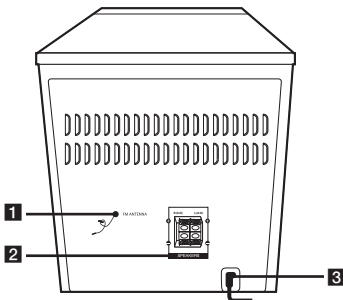


Front Panel



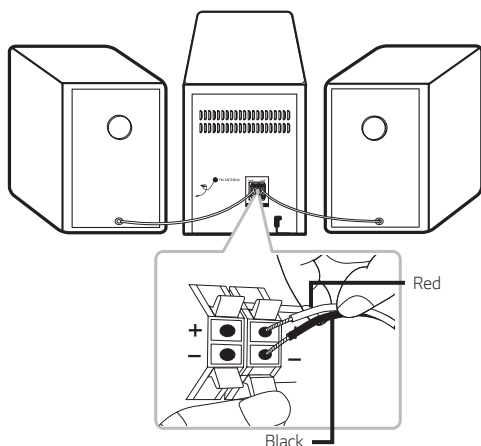
- 1** (Standby/On)
Switches the unit ON or OFF.
- F** (Function)
Selects the function or input source.
- ⏮ / ⏭** (Skip/Search)
- Searches backward or forward.
- Skips to the previous/next track/file.
- TUNING - / +**
Selects the radio stations.
- ⏸** (Play/Pause)
- Starts or pauses playback.
- Selects Stereo/Mono.
- ⏹** (Stop)
Stops playback.
- 2** (Open)
Uses it when inserting or removing a CD.
- 3** Display window
- 4** Volume Knob
Adjusts volume of speaker.
- 5** USB
Plays the audio files by connecting the USB device.
- 6** **PORT. (Portable) IN**
Connects to a Portable device.

Rear Panel



- 1** **FM ANTENNA**
- 2** **SPEAKERS (L/R)** terminals
- 3** **POWER IN**

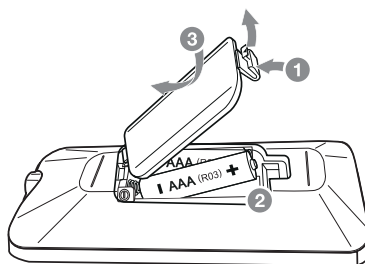
Speaker Connection



How to disconnect the wireless network connection or the wireless device


Turn off the unit by pressing the power button for more than 5 seconds.

Replacement of battery



Specifications

Specifications

Power Requirements	Refer to the main label on the unit.
Power Consumption	Refer to the main label on the unit. Networked standby : 0.5 W (If all network ports are activated.)
Dimensions (W x H x D)	Approx. 150 mm x 181 mm x 210 mm
Net Weight	Approx. 1.24 kg
Bus Power Supply (USB)	5 V  500 mA
Amplifier (Total RMS Output power)	10 W

Design and specifications are subject to change without notice.

