



# OWNER'S MANUAL IPS LED MONITOR (LED MONITOR\*)

\*LG LED Monitors are LCD Monitors with LED Backlighting.

Please read this manual carefully before operating your set and retain it for future reference.

## IPS LED MONITOR MODEL

24BK550Y

27BK550Y

# CONTENTS

## LICENSE ----- 3

## ASSEMBLING AND PREPARING - 4

- Product Components ----- 4
- Supported Drivers and Software ----- 5
- Component and Button Description ----- 6
- Moving and Lifting the Monitor ----- 7
- Setting up the Monitor set ----- 8
- Attaching the Stand Base
- Mounting on a table
- Using the cable holder
- Adjusting the Stand Height
- Adjusting the angle
- Swivel stand
- Pivot Feature
- Detaching the Stand Body
- Installing the wall mount plate
- Installing to a wall

## USING THE MONITOR SET----- 16

- Connecting to a PC ----- 16
- Connecting to AV Devices ----- 18
- Connecting Peripherals ----- 18

## CUSTOMIZING SETTINGS ----- 20

## TROUBLESHOOTING ----- 24

## SPECIFICATIONS ----- 25

- Preset Modes (Resolution) ----- 27
- Indicator ----- 27
- Beep Guide ----- 28

# LICENSE

Each model has different licenses. Visit [www.lg.com](http://www.lg.com) for more information on the license.



The terms HDMI and HDMI High-Definition Multimedia Interface, and the HDMI Logo are trademarks or registered trademarks of HDMI Licensing Administrator, Inc.

The following content is only applied to the monitor which is sold in Europe market and which needs to meet the ErP Directive:

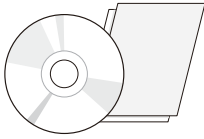
\* This monitor is set to be turned off automatically in 4 hours after you turned on display if there is no adjustment to display.

\* To make this setting be disabled, change the option to 'Off' in OSD menu of "Automatic Standby".

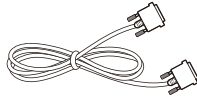
# ASSEMBLING AND PREPARING

## Product Components

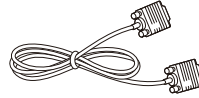
Please check whether all the components are included in the box before using the product. If there are missing components, contact the retail store where you purchased the product. Note that the product and components may look different from those shown here.



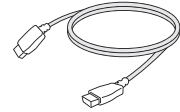
**CD / Card**



**DVI-D Cable**  
( This cable is not included in all countries. )



**D-SUB Cable**  
( This cable is not included in all countries. )



**HDMI Cable**  
( This cable is not included in all countries. )



**Power Cord**  
( Depending on the country )



**Audio Cable**  
( This cable is not included in all countries. )



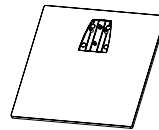
**DisplayPort Cable**  
( This cable is not included in all countries. )



**USB Cable**  
( This cable is not included in all countries. )



**Stand Body**



**Stand Base**



**Cable Holder**



### CAUTION

- Always use genuine components to ensure safety and product performance.
- The product warranty will not cover damage or injury caused by the use of counterfeit components.
- It is recommend that use the supplied components.
- If you use generic cables not certified by LG, the screen may not display or there may be image noises.



### NOTE

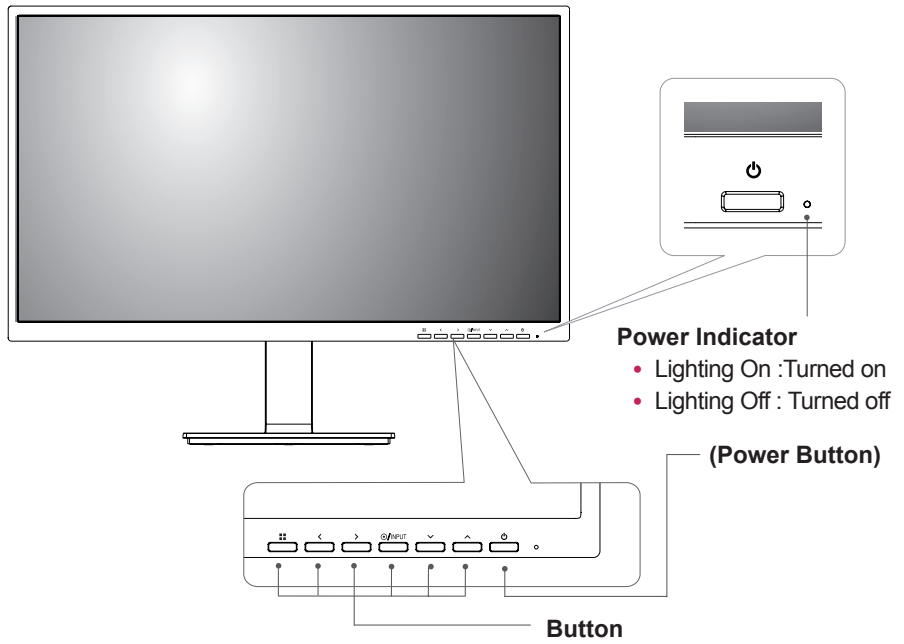
- Note that the components may look different from those shown here.
- Without prior notice, all information and specifications in this manual are subject to change to improve the performance of the product.
- To purchase optional accessories, visit an electronics store or online shopping site or contact the retail store where you purchased the product.

## Supported Drivers and Software

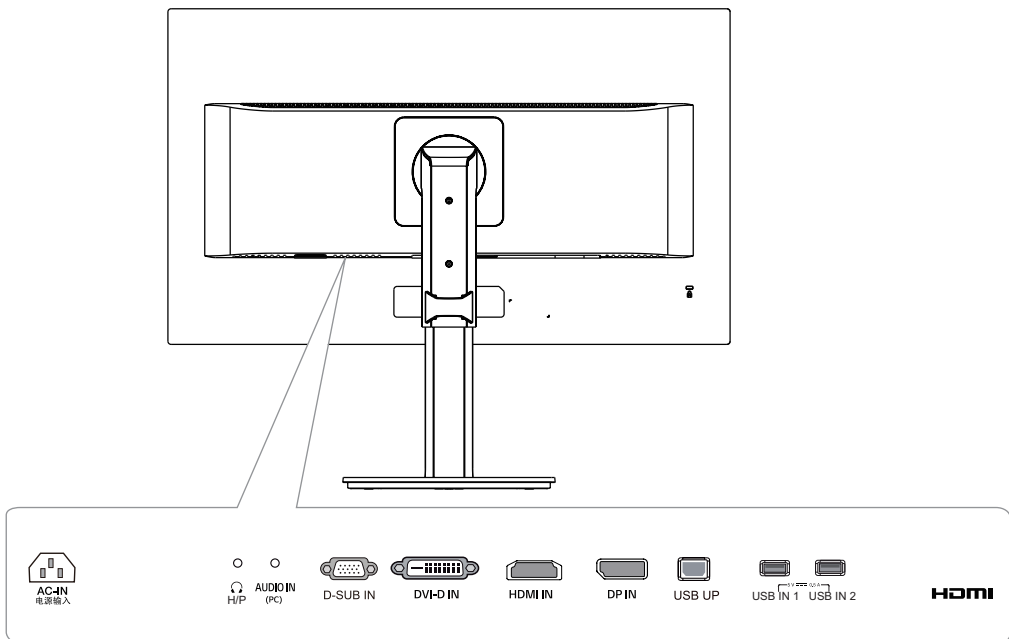
You can download and install the latest version from the LGE website ([www.lg.com](http://www.lg.com)).

| Drivers and Software | Installation Priority | 24BK550Y<br>27BK550Y |
|----------------------|-----------------------|----------------------|
| Monitor Driver       | Recommended           | ○                    |
| OnScreen Control     | Recommended           | ○                    |
| Dual Controller      | Optional              | ○                    |

## Component and Button Description



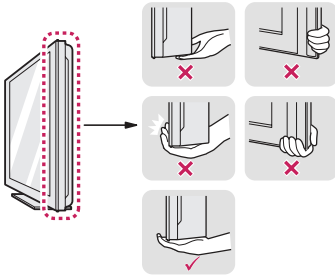
## Input Connector



## Moving and Lifting the Monitor

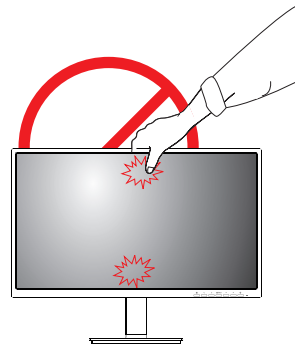
When moving or lifting the monitor, follow these instructions to prevent the monitor from being scratched or damaged and to ensure safe transportation regardless of its shape or size.

- It is advisable to place the monitor in the original box or packing material before attempting to move it.
- Before moving or lifting the monitor, disconnect the power cord and all cables.
- Hold the top and bottom of the monitor frame firmly. Do not hold the panel itself.



### CAUTION

- As far as possible, avoid touching the monitor screen. This may result in damage to the screen or some of the pixels used to create images.



- When holding the monitor, the screen should face away from you to prevent it being scratched.

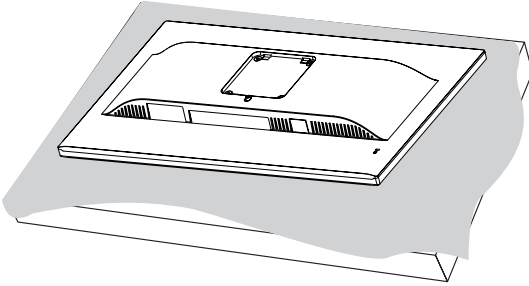


- When moving the monitor, avoid any strong shock or vibrations to the product.
- When moving the monitor, keep it upright, never turn the monitor on its side or tilt it sideways.

## Setting up the Monitor set

### Attaching the Stand Base

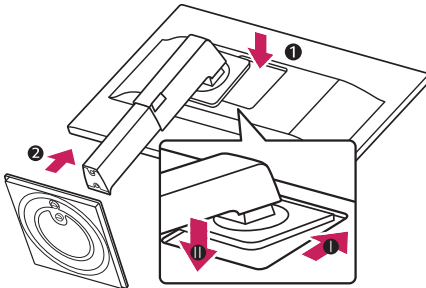
1



#### ! CAUTION

- To protect the screen from scratches, cover the surface with a soft cloth.

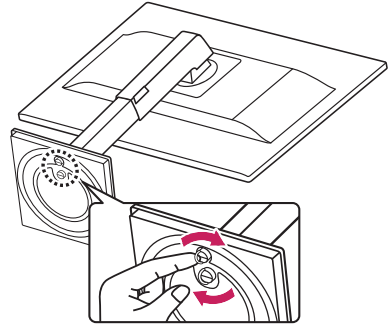
2



#### ! CAUTION

- To avoid injuring the fingers and foot, when assembling the Stand Body and Base, you should hold the Stand Base.

3

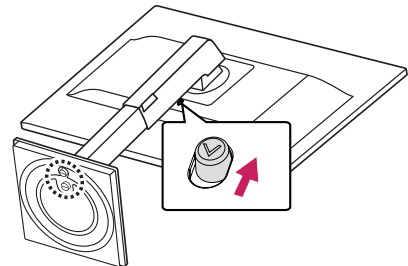


#### ! WARNING

- To avoid injury to the fingers and foot when Assembly Stand Body and Base, should hold Base when assembly stand body and base.

#### ! NOTE

- Press the stand until the button reaches the top.



## CAUTION

- Illustrations in this document represent typical procedures, so they may look different from the actual product.
- Do not carry the monitor upside down by just holding the stand base. This may cause the monitor to fall off the stand and could result in personal injury.
- When lifting or moving the monitor, do not touch the monitor screen. The force applied to the monitor screen may cause damage to it.
- Do not apply foreign substances (oils, lubricants, etc.) to the screw parts when assembling the product. (Doing so may damage the product.)
- Applying excessive force when tightening screws may cause damage to the monitor. Damage caused in this way will not be covered by the product warranty.

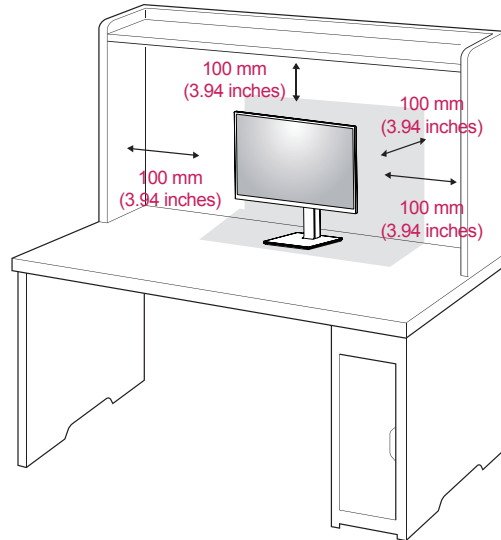
## NOTE

- You can disassemble the stand in the reverse order of the assembly.

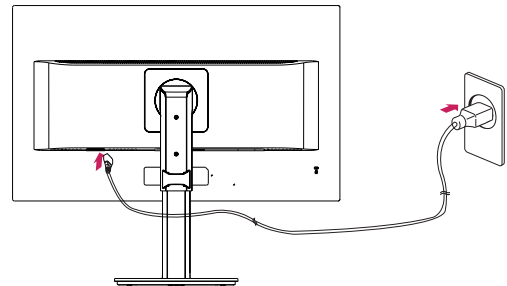
## Mounting on a table

- 1 Lift and tilt the Monitor set into its upright position on a table.

Leave a 100 mm (3.94 inches) space from the wall for proper ventilation.



- 2 Connect the Power cord to the monitor, then plug the power cord into the wall outlet.



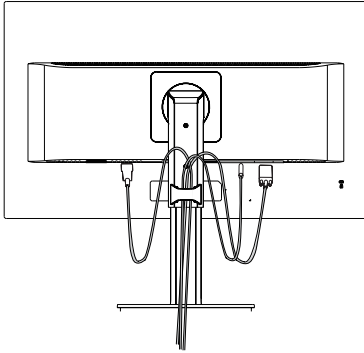
- 3 Press the (Power) button on the front of the monitor to turn on the monitor.

## CAUTION

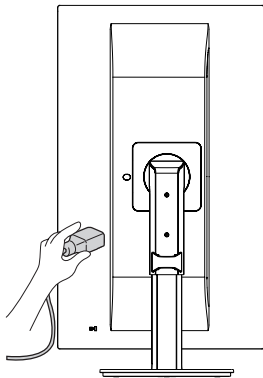
- Unplug the power cord prior to moving or installing the monitor. There is risk of electric shock.

## Using the cable holder

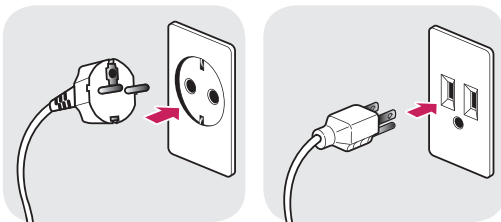
Arrange the cables using the cable holder as shown in the illustration.



Rotate Set(Pivot) and put connectors. It is easy to put connectors and manage cables using cable holder.



### Cautions When Connecting Power Cord

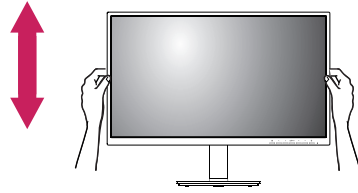


100-240 V ~

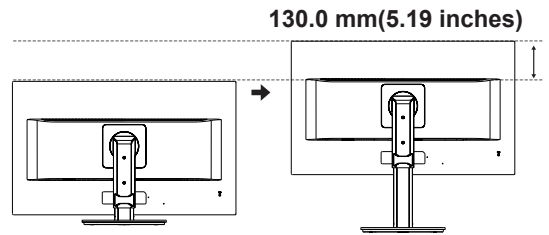
- Make sure to use the power cord that is provided in the product package and connect it to a grounded power outlet.
- If you need another power cord, please contact your local dealer or the nearest retail store.

## Adjusting the Stand Height

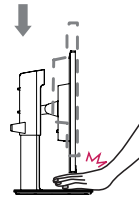
- 1 Handle the monitor with both hands for safety.



- 2 The height can be adjusted up to **130.0 mm(5.19 inches)**.



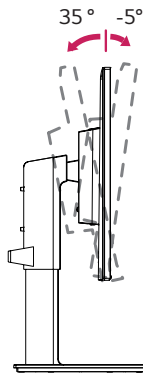
### ! WARNING



- Do not put your fingers or hand between the screen and the base (chassis) when adjusting the screen's height.

## Adjusting the angle

- 1 Place the monitor in an upright position, mounted on the stand base.
- 2 Adjust the angle of the screen. The angle of the screen can be adjusted forwards or backwards for a comfortable viewing experience.

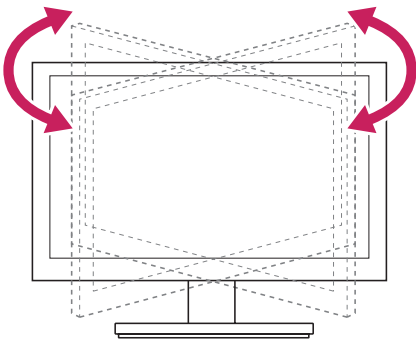


Rear Side

Front Side

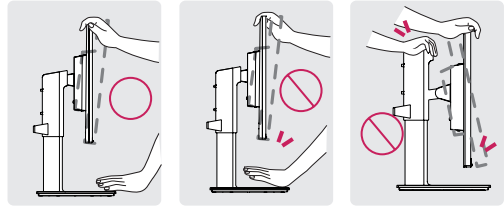
## Swivel stand

- Image shown may differ from your Monitor set.
- 1 Swivel 355 degrees and adjust the angle of the Monitor set to suit your view.

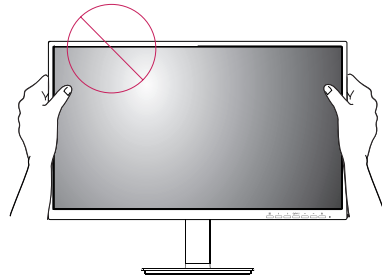


## WARNING

- To avoid injury to the fingers when adjusting the screen, do not hold the lower part of the monitor's frame as illustrated below.



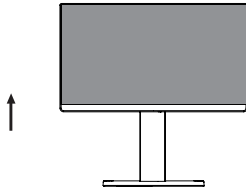
- Be careful not to touch or press the screen area when adjusting the angle of the monitor.



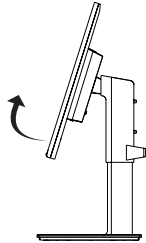
## Pivot Feature

The pivot feature allows the monitor to rotate 90° clockwise and -90° counter clockwise.

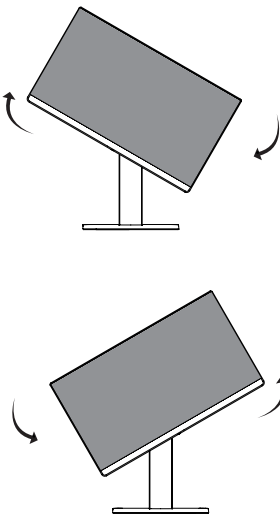
- 1 Raise the monitor to the maximum height.



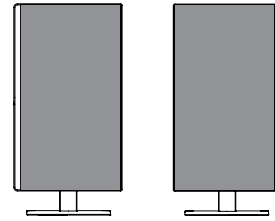
- 2 Adjust the angle of the monitor in the direction of the arrow as shown in the figure.



- 3 Rotate the monitor 90° clockwise and -90° counter clockwise as shown in the figure.

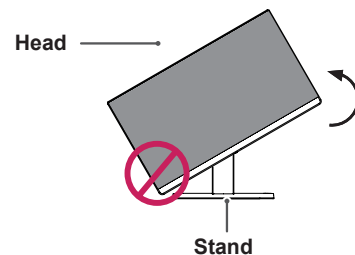
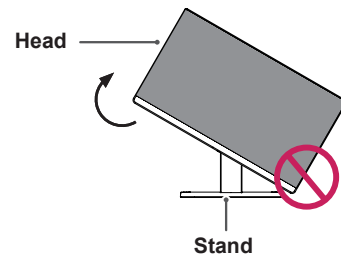


- 4 Complete the installation by rotating the monitor 90° clockwise and -90° counter clockwise as shown below.



### NOTE

- Auto Pivot feature of the display is not supported.
- The screen can be rotated easily using the screen pivot shortcut key provided with your Windows operating system. Note that some Windows versions and some graphics card drivers may use different settings for the screen pivot key or may not support the pivot key at all.
- Windows screen pivot shortcut keys
  - 0°: Ctrl + Alt + Up arrow key (↑)
  - 90°: Ctrl + Alt + Left arrow key (←)
  - 180°: Ctrl + Alt + Down arrow key (↓)
  - 270°: Ctrl + Alt + Right arrow key (→)

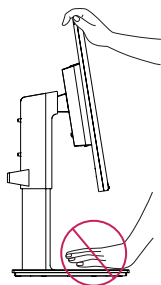


### WARNING

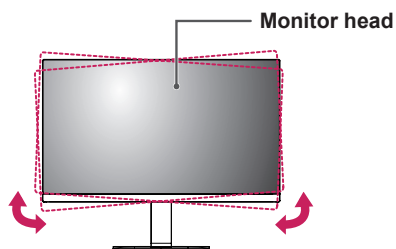
- To avoid scratching the stand base, make sure that when rotating the monitor using the pivot feature, the stand does not make contact with the monitor.

**!** **WARNING**

- Take care when rotating the monitor if the cable is connected.
- To avoid injury when rotating the display, do not place your fingers between the display and the stand base.

**!** **NOTE**

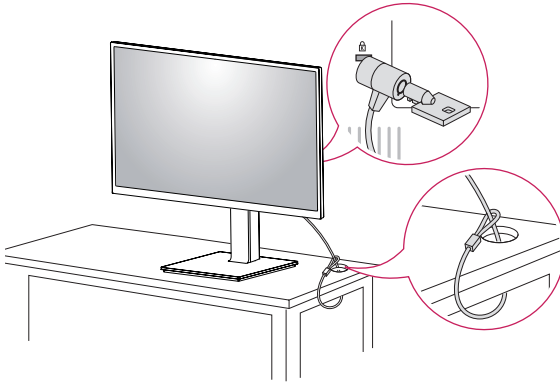
- The left or right side of the monitor head can be slightly rotated up or down (up to 3°). Adjust the horizontal level of the monitor head.



### Using the Kensington security system

The Kensington security system connector is located at the back of the Monitor set. For more information of installation and using, refer to the manual supplied with the Kensington security system or visit <http://www.kensington.com>.

Connect the Kensington security system cable between the Monitor set and a table.

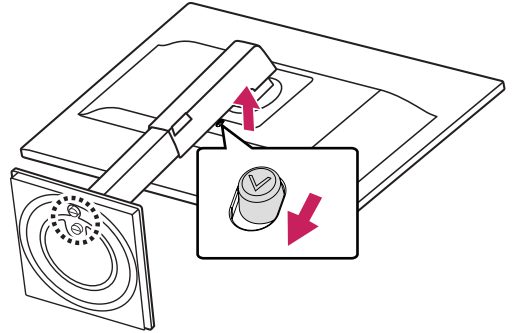


#### ! NOTE

- Use of the Kensington lock is optional. The accessories can be purchased at your local electronics store.

### Detaching the Stand Body

- 1 Place the monitor's screen face down. To protect the screen from scratches, cover the surface with a soft cloth.
- 2 Remove the stand from the monitor by pressing the button on the bottom center of the back of the monitor.



### Installing the wall mount plate

This monitor supports the specification of the standard wall mount plate or compatible device.

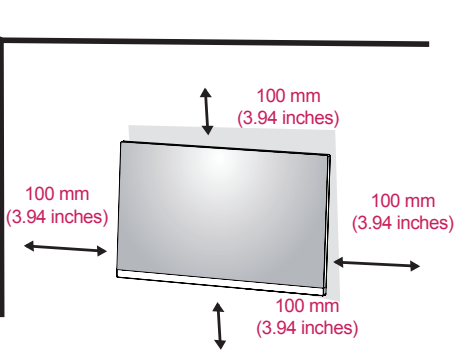
- 1 Place the screen face down. To protect the screen from scratches, cover the surface with a soft cloth.
- 2 Detaching the Stand Body.
- 3 Place the wall mount plate onto the monitor and align it with the screw holes.
- 4 Tighten the four screws to fix the plate to the monitor using a screwdriver.

#### ! NOTE

- The wall mount plate is sold separately.
- For more information on installation, refer to the wall mount plate's installation guide.
- Be careful not to use excessive force when mounting the wall mount plate, as this can damage the monitor's screen.

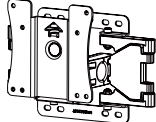
## Installing to a wall

Install the monitor at least 100 mm (3.94 inches) away from the wall and leave about 100 mm (3.94 inches) of space at each side of the monitor to ensure sufficient ventilation. Detailed installation instructions can be obtained from your local retail store. Please refer to the manual to install and set up a tilting wall mounting bracket.

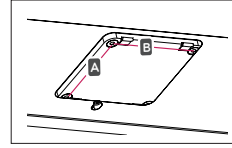


To install the monitor to a wall, attach a wall mounting bracket (optional) to the back of the monitor. Make sure that the wall mounting bracket is securely fixed to the monitor and to the wall.

- 1 If you use screw longer than standard, the monitor might be damaged internally.
- 2 If you use improper screw, the product might be damaged and drop from mounted position. In this case, LG Electronics is not responsible for it.

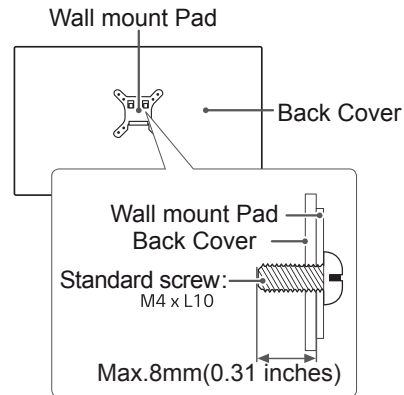
|                                    |  |
|------------------------------------|--|
| <b>Wall Mount (A x B)</b>          | 100 x 100  |
| <b>Standard screw</b>              | M4 x L10   |
| <b>Number of screws</b>            | 4  |
| <b>Wall Mount Plate (Optional)</b> | LSW 149<br> |

- Wall Mount (A x B)



### CAUTION

- Unplug the power cord before moving or installing the monitor to avoid electric shocks.
- Installing the monitor on the ceiling or on a slanted wall may result in the monitor falling off, which could lead to injury. Please use the genuine LG wall mounting bracket. For more information, contact your local retail store or a qualified installer.
- Applying excessive force when fastening screws may cause damage to the monitor. Damage caused in this way will not be covered by the product warranty.
- Use the wall mounting bracket and screws that conform to the VESA standard. Damage caused by the use or misuse of inappropriate components will not be covered by the product warranty.
- Screw length from outer surface of back cover should be under 8mm(0.31 inches).



### NOTE

- Use the screws specified by the VESA standard.
- The wall mount kit includes the installation guide and all necessary parts.
- The wall mounting bracket is optional. The accessories can be purchased at your local retail store.
- The length of the screw may differ for each wall mounting bracket. Ensure the correct length screw is used.
- For more information, please refer to the user manual for the wall mounting bracket.

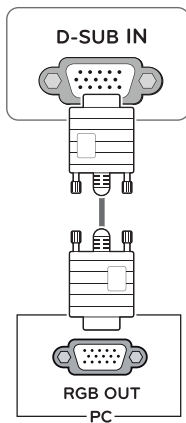
# USING THE MONITOR SET

## Connecting to a PC

- Your Monitor set supports Plug & Play\*.
- \*Plug & Play: A PC recognizes a connected device that users connect to a PC and turn on, without device configuration or user intervention.

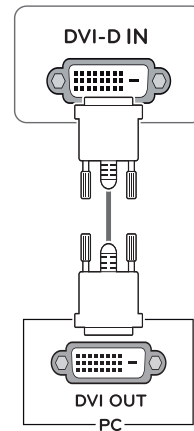
### D-SUB connection

Transmits analog video from your PC to the Monitor set. Connect the PC and the Monitor set with the supplied D-sub 15 pin signal cable as shown in the following illustrations.



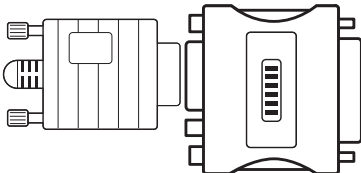
### DVI-D connection

Transmits a digital video signal from your PC to the Monitor set. Connect the PC and the Monitor set with a DVI cable as shown in the following illustrations.



### ! NOTE

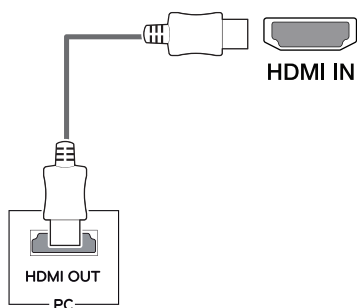
- When using a D-Sub signal input cable connector for Macintosh



- Mac adapter**  
For Apple Macintosh use, a separate plug adapter is needed to change the 15 pin high density (3 row) D-SUB VGA connector on the supplied cable to a 15 pin 2 row connector.

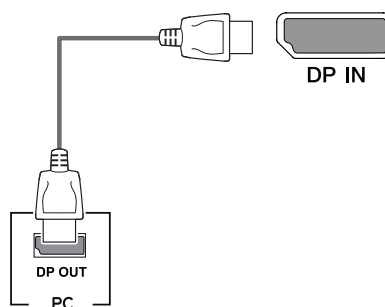
## HDMI connection

Transmits the digital video and audio signals from your PC to the Monitor set. Connect the PC and the Monitor set with the HDMI cable as shown in the following illustrations.



## DisplayPort connection

Transmits the digital video and audio signals from your PC to the monitor. Connect your PC to the monitor using the DisplayPort cable as illustrated below.



### ! NOTE

- If you use HDMI PC, it can cause compatibility problem.
- Use a certified cable with the HDMI logo attached. If you do not use a certified HDMI cable, the screen may not display or a connection error may occur.
- Recommended HDMI cable types
  - High-Speed HDMI<sup>®/TM</sup> Cable
  - High-Speed HDMI<sup>®/TM</sup> Cable with Ethernet

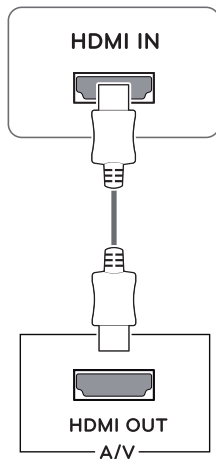
### ! NOTE

- There may be no video or audio output depending on the DP version of the PC.
- If you use generic cables not certified by LG, the screen may not display or there may be image noises.

## Connecting to AV Devices

### HDMI connection

Transmits the digital video and audio signals from your AV devices to the monitor. Connect your AV device to the monitor with the HDMI cable as illustrated below.



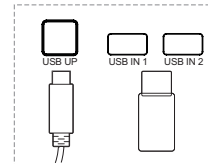
#### ! NOTE

- Use a certified cable with the HDMI logo attached. If you do not use a certified HDMI cable, the screen may not display or a connection error may occur.
- Recommended HDMI cable types
  - High-Speed HDMI<sup>®</sup>/™ Cable
  - High-Speed HDMI<sup>®</sup>/™ Cable with Ethernet
- When connect to external device, it can be sound volume difference. (For example : DVD player).
- Suggest connect HDMI to PC play media.

## Connecting Peripherals

### USB Cable connection - PC

The USB port on the product functions as a USB hub.



**One USB Upstream port**  
Connect this port to the downstream port of a computer, laptop or USB monitor (Your computer or USB monitor must support USB and have USB ports).

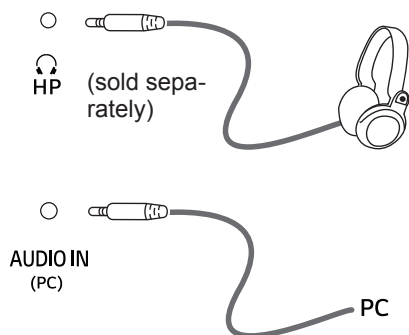
**Two USB Downstream ports**  
Connect these ports to a mouse, USB keyboard, memory stick with current spec under 100mA.

#### ! NOTE

- The monitor's USB terminal supports USB 2.0 and high speed cables.

## Connecting Headphones

Connect peripherals to the monitor via the headphones port. Connect as illustrated.

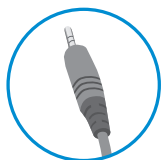


### ! NOTE

- Peripheral devices are sold separately.
- If you use angled headphones, it may cause a problem with connecting another external device to the monitor. Therefore, it is recommended to use straight headphones.



Angle Type





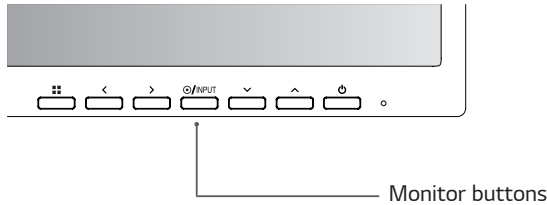
Straight Type


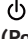
- Depending on the audio settings of the PC and external device, headphones and speaker functions may be limited.

# CUSTOMIZING SETTINGS

## Activating the Main Menu

- 1 Press the Menu (  ) button.
- 2 Use the <, >, v, ^ buttons to adjust the options.
- 3 Press the Menu (  ) button to exit the OSD menu.



| Button  | Description  |   |
|---|--|---|
| Menu (  )            | If the menu is inactive  | Activates the main menu.  |
|   | If the menu is active  | Exits the OSD menu when the button is pressed.  |
| <   | If the menu is inactive  | Adjusts the volume level of the monitor.  |
|   | If the menu is active  | Left directional key.   |
| >   | If the menu is inactive  | Adjusts the volume level of the monitor.  |
|   | If the menu is active  | Right directional key.  |
| v   | If the menu is inactive  | Enters the Accessibility menu.  |
|   | If the menu is active  | Up directional key.   |
| ^   | If the menu is inactive  | Enters the Accessibility menu.  |
|   | If the menu is active  | Down directional key.   |
| INPUT   | Sets input mode. You can operate the change of input signals.<br>• When two input signals over are connected and press input key, input signal(D-SUB/DVI/HDMI/DP)will be changed sequentially.<br>• When only one signal is connected, it is automatically detected. The default setting is D-SUB. |   |
| <br>(Power Button) | Powers on or off.  |   |
|   | Power Indicator  | When the monitor is in operating mode, the power indicator will turn white (on mode). |

## Customizing settings

| Menu > Quick Settings | Description  |   |
|-----------------------|--|---|
| Brightness            | Adjusts the color contrast and brightness of the screen. |   |
| Contrast              |  |   |
| Ratio                 | Adjusts the screen ratio.                                |   |
|                       | Wide   | Displays the video in wide-screen, regardless of the video signal input.                  |
|                       | Original   | Displays a video according to the input video signal aspect ratio.                        |
| SMART ENERGY SAVING   | High   | Enables SMART ENERGY SAVING you can save energy with this energy-high efficient function. |
|                       | Low  | Enables SMART ENERGY SAVING you can save energy with this energy-low efficient function.  |
|                       | Off  | Disables SMART ENERGY SAVING .  |

\* SMART ENERGY SAVING : Conserve energy by using luminance compensation algorithm.

### ! NOTE

- The ratio is disabled in the interlaced signal.
- Saving Data depends on the Panel. So,those values should be different from each panel and panel vendor. If you select the option of SMART ENERGY SAVING is High or Low, monitor luminance become lower or higher depend on source.

## Customizing settings

| Menu > Picture          | Description   |  |  |
|-------------------------|---|--|--|
| <b>Picture Mode</b>     | <b>Custom</b>   | Allows the user to adjust each element. The color mode of the main menu can be adjusted.   |  |
|                         | <b>Reader 1</b>   | It is a mode that the screen is adjusted to the best for the newspaper. If you want screen more bright, you can control brightness in Menu OSD.  |  |
|                         | <b>Reader 2</b>   | It is a mode that the screen is adjusted to the best for the cartoon. If you want screen more bright, you can control brightness in Menu OSD.  |  |
|                         | <b>Photo</b>  | Optimizes the screen to view photos.   |  |
|                         | <b>Cinema</b>   | Optimizes the screen to improve the visual effects of a video.   |  |
|                         | <b>Color Weakness</b>   | This mode is for users who cannot distinguish between red and green. It enables users with color weakness to easily distinguish between the two colors.  |  |
|                         | <b>Game</b>   | Optimizes the screen for gameplay.   |  |
| <b>Picture Adjust</b>   | <b>SUPER RESOLUTION+</b>  | High   | Optimized picture quality is displayed when a user wants crystal clear images. It is effective for high quality video or game.                               |
|                         |   | Middle   | The optimized picture quality is displayed when a user wants images between low and high modes for comfortable viewing. It is effective for UCC or SD video. |
|                         |   | Low  | The optimized picture quality is displayed when a user wants smooth and natural images. It is ineffective for slow-moving pictures or still images.          |
|                         |   | Off  | Select this option for everyday viewing. SUPER RESOLUTION+ is turned off in this mode.   |
|                         | <b>Sharpness</b>  | Adjusts the sharpness of the screen.   |  |
|                         | <b>Black Level</b>  | Sets the offset level (for HDMI only).<br>• Offset: as a reference for a video signal, this is the darkest color the monitor can display.  |  |
|                         |   | High   | Keeps the current contrast ratio of the screen.  |
|                         |   | Low  | Lowers the black levels and raises the white levels from the current contrast ratio of the screen.   |
|                         | <b>Response Time</b>  | Sets a response time for displayed pictures based on the speed of the screen. For a normal environment, it is recommended that you use Normal. For a fast-moving picture, it is recommended that you use High. Setting to High may cause image sticking. |  |
|                         |   | High   | Sets the response time to High.  |
|                         |   | Middle   | Sets the response time to Middle.  |
|                         |   | Low  | Sets the response time to Low.   |
|                         |   | Off  | Sets the response time to Off.   |
|                         | <b>DFC</b>  | On   | Adjusts the brightness automatically according to the screen.  |
|                         |   | Off  | Disables the <b>DFC</b> feature.   |
| <b>Black Stabilizer</b> | <b>Black Stabilizer</b><br>: You can control the black contrast to have better visibility in dark scenes. Increasing the Black Stabilizer value brightens the low gray level area on the screen. (You can easily distinguish objects on dark game screens.) Reducing the Black Stabilizer value darkens the low gray level area and increases the dynamic contrast on the screen. |  |  |



|                     |                       |  |
|---------------------|-----------------------|--|
| <b>Color Adjust</b> | <b>Gamma</b>          | The higher the gamma value, the darker the image becomes. Likewise, the lower the gamma value, the lighter the image becomes. If you do not need to adjust the gamma settings, select Off.   |
|                     | <b>Color Temp</b>     | Selects the factory default picture color.<br>Warm: Sets the screen color to a reddish tone.<br>Medium: Sets the screen color between a red and blue tone.<br>Cool: Sets the screen color to a bluish tone.<br>Custom: The user can adjust it to red, green, or blue by customization.   |
|                     | <b>Red/Green/Blue</b> | You can customize the picture color using Red, Green, and Blue colors.   |
|                     | <b>Six Color</b>      | Meets the user requirements for colors through adjusting the color and saturation of the six colors (Red_Hue, Red_Saturation, Green_Hue, Green_Saturation, Blue_Hue, Blue_Saturation, Cyan_Hue, Cyan_Saturation, Magenta_Hue, Magenta_Saturation, Yellow_Hue, Yellow_Saturation) and saving the settings.<br><br>*Hue: Adjusts tone of the screen.<br>*Saturation: Adjusts the saturation of the screen colors. The lower the value, less saturated and bright the colors become. The higher the value, the more saturated and dark the colors become. |
|                     | <b>Reset</b>          | Returns the color settings to the default settings.  |
| <b>Display</b>      | <b>Horizontal</b>     | To move image left and right.  |
|                     | <b>Vertical</b>       | To move image up and down.   |
|                     | <b>Clock</b>          | To minimize any vertical bars or stripes visible on the screen background. The horizontal screen size will also change.  |
|                     | <b>Phase</b>          | To adjust the focus of the display. This item allows you to remove any horizontal noise and clear or sharpen the image of characters.  |

**NOTE**

- This is subsidiary for color weakness user. Therefore if you feel uncomfortable with the screen, please turn off this function.
- This function can't distinguish some colors in some images.

## Customizing settings

| Menu > Sound | Description                                   |
|--------------|---|
| Volume       | To adjust the Volume of headphone or speaker. |
| Main Audio   | To choose the audio source input.             |

| Menu > General    | Description   |
|-------------------|---|
| Language          | To choose the language in which the control names are displayed.  |
| Power LED         | On The power indicator is automatically turned on.  |
|                   | Off The power indicator is turned off.  |
| Automatic Standby | The monitor will automatically switch to standby mode after a certain period.   |
| Resolution        | User can set the desired resolution. This option is enabled only when the screen resolution on your computer is set to the following (D-SUB only).  |
|                   |  <b>NOTE</b> <ul style="list-style-type: none"> <li>The function is enabled only when the screen resolution on your computer is set to the following, except that the PC output wrong resolution.</li> </ul> |
|                   | 1024x768, 1280x768, 1360x768, 1366x768, Off   |
|                   | 1280x960, 1600x900, Off   |
|                   | 1440x900, 1600x900, Off   |
| OSD Lock          | Prevents incorrect key input.   |
|                   | On Key input is disabled.   |
|                   |  <b>NOTE</b> <ul style="list-style-type: none"> <li>All function except for the OSD Lock mode, brightness, Contrast are disabled.</li> </ul>   |
|                   | Off Key input is enabled.   |

| Menu > Auto Configuration          | Description  |
|------------------------------------|--|
| Do you want to Auto Configuration? |  |
| Yes                                | Operate the Auto configuration for optimal display in D-SUB. |
| Cancel                             | Cancel the select.   |



### NOTE

- This function will be enable only in analog input.

| Menu > Reset                        | Description                      |
|-------------------------------------|----------------------------------|
| Do you want to reset your settings? |                                  |
| Reset                               | Returns to the default settings. |
| Cancel                              | Cancel the select.               |

# TROUBLESHOOTING

## Check the following before calling for service.

| No image appears                                    |  |
|---|--|
| Is the power cord of the display connected?         | <ul style="list-style-type: none"> <li>• Check and see if the power cord is connected properly to the power outlet.</li> </ul>   |
| Is the power indicator light on?                    | <ul style="list-style-type: none"> <li>• Press the Power button.</li> </ul>  |
| Do you see an "Out of Range" message on the screen? | <ul style="list-style-type: none"> <li>• This message appears when the signal from the PC (video card) is out of horizontal or vertical frequency range of the display. See the 'Specifications' section of this manual and configure your display again.</li> </ul>   |
| Do you see a "NO SIGNAL" message on the screen?     | <ul style="list-style-type: none"> <li>• After the monitor is on "NO SIGNAL", the monitor goes to DPM mode.</li> <li>• This is displayed when the signal cable between the PC and the monitor is missing or disconnected. Check the cable and reconnect it.</li> <li>• If monitor is DPM with power LED off condition, user should be press twice DC button for wake up monitor screen.</li> </ul> |

| Can't you control some functions in OSD? |  |
|--|--|
| Can't you select some menu in OSD?       | <ul style="list-style-type: none"> <li>• You can unlock the OSD controls at any time by entering the OSD lock menu and changing items to off.</li> </ul> |



### CAUTION

- Check **Control Panel ► Display ► Settings** and see if the frequency or the resolution were changed. If yes, readjust the video card to the recommend resolution.
- If the recommended resolution (optimal resolution) is not selected, letters may be blurred and the screen may be dimmed, truncated or biased. Make sure to select the recommend resolution.
- The setting method can differ by computer and O/S (Operation System), and resolution mentioned above may not be supported by the video card performance. In this case, please ask to the computer or the video card manufacturer.

| Display image is incorrect            |   |
|---------------------------------------|---|
| The screen color is mono or abnormal. | <ul style="list-style-type: none"> <li>• Check if the signal cable is properly connected and use a screwdriver to fasten if necessary.</li> <li>• Make sure the video card is properly inserted in the slot.</li> <li>• Set the color setting higher than 24 bits (true color) at <b>Control Panel ► Settings</b>.</li> </ul> |
| The screen blinks.                    | <ul style="list-style-type: none"> <li>• Check if the screen is set to interlace mode and if yes, change it to the recommend resolution.</li> </ul>   |

| Do you see an "Unrecognized monitor, Plug&Play (VESA DDC) monitor found" message? |  |
|---|--|
| Have you installed the display driver?  | <ul style="list-style-type: none"> <li>• Be sure to install the display driver from our web site: <a href="http://www.lg.com">http://www.lg.com</a>.</li> <li>• Make sure to check if the video card supports Plug&amp;Play function.</li> </ul> |

| The screen is flickering.                  |   |
|--|---|
| Did you select the recommended resolution? | <ul style="list-style-type: none"> <li>• If the selected resolution is HDMI <b>1080i</b> 60/50 Hz, the screen may be flickering. Change the resolution to the recommended resolution <b>1080P</b>.</li> </ul> |

# SPECIFICATIONS

24BK550Y

|                            |   |   |
|----------------------------|---|---|
| LCD Screen                 | Type  | TFT (Thin Film Transistor) LCD (Liquid Crystal Display) Panel, Anti-Glare coating |
|                            | Pixel Pitch   | 0.2745 mm x 0.2745 mm   |
| Resolution                 | Maximum Resolution  | 1920 x 1080 @ 60 Hz   |
|                            | Recommended Resolution  | 1920 x 1080 @ 60 Hz   |
| Video Signal               | Horizontal Frequency  | 30 KHz to 83 KHz  |
|                            | Vertical Frequency  | 56 Hz to 75 Hz  |
|                            | Synchronization   | Separate Sync.  |
| Input Connector            | D-SUB IN, DVI-D IN, HDMI IN, DP(DisplayPort) IN, AUDIO IN(PC), H/P, USB UP, USB IN1, USB IN2                  |   |
| Power consumption          | On mode: 13.95 W Typ. ( ENERGY STAR® standard ) *<br>Sleep Mode (Standby Mode) ≤ 0.5 W **<br>Off Mode ≤ 0.3 W |   |
| Power Input                | AC 100-240V ~ 50/60Hz 1.2 A   |   |
| Environmental Conditions   | Operating Temperature<br>Operating Humidity   | 0 °C to 40 °C (32 °F to 104 °F)<br>Less than 80 %                                 |
|                            | Storage Temperature<br>Storage Humidity   | -20 °C to 60 °C (-4 °F to 140 °F)<br>Less than 85 %                               |
| Dimension                  | Monitor Size (Width x Height x Depth)   |   |
|                            | With Stand  | 553.8 mm x 512.9 mm x 240 mm  |
|                            | Without Stand   | 553.8 mm x 333.1 mm x 58.4 mm   |
| Weight (Without Packaging) | 5.7 kg  |   |

Product specifications shown above may be changed without prior notice due to upgrade of product functions.

\* The power consumption level can be different by operating condition and monitor setting.

\* The On mode power consumption is measured with ENERGY STAR® test standard.

\*\* The monitor goes to the Sleep Mode in a couple of minutes(Max 5 minutes).

# SPECIFICATIONS

27BK550Y

|                            |  |   |
|----------------------------|--|---|
| LCD Screen                 | Type   | TFT (Thin Film Transistor) LCD (Liquid Crystal Display) Panel, Anti-Glare coating |
|                            | Pixel Pitch  | 0.3114 mm x 0.3114 mm   |
| Resolution                 | Maximum Resolution   | 1920 x 1080 @ 60 Hz   |
|                            | Recommended Resolution   | 1920 x 1080 @ 60 Hz   |
| Video Signal               | Horizontal Frequency   | 30 KHz to 83 KHz  |
|                            | Vertical Frequency   | 56 Hz to 75 Hz  |
|                            | Synchronization  | Separate Sync.  |
| Input Connector            | D-SUB IN, DVI-D IN, HDMI IN, DP(DisplayPort) IN, AUDIO IN(PC), H/P, USB UP, USB IN1, USB IN2               |   |
| Power consumption          | On mode: 16 W Typ. ( ENERGY STAR® standard ) *<br>Sleep Mode (Standby Mode) ≤ 0.5 W **<br>Off Mode ≤ 0.3 W |   |
| Power Input                | AC 100-240V ~ 50/60Hz 1.5 A  |   |
| Environmental Conditions   | Operating Temperature  | 0 °C to 40 °C (32 °F to 104 °F)   |
|                            | Operating Humidity   | Less than 80 %  |
|                            | Storage Temperature  | -20 °C to 60 °C (-4 °F to 140 °F)   |
|                            | Storage Humidity   | Less than 85 %  |
| Dimension                  | Monitor Size (Width x Height x Depth)  |   |
|                            | With Stand   | 622.2 mm x 531.6 mm x 240 mm  |
|                            | Without Stand  | 622.2 mm x 371.5 mm x 58.4 mm   |
| Weight (Without Packaging) | 7.2 kg   |   |

Product specifications shown above may be changed without prior notice due to upgrade of product functions.

\* The power consumption level can be different by operating condition and monitor setting.

\* The On mode power consumption is measured with ENERGY STAR® test standard.

\*\* The monitor goes to the Sleep Mode in a couple of minutes(Max 5 minutes).

## Preset Modes (Resolution)

### D-SUB / DVI-D / HDMI / DP PC Timing

| Display Modes (Resolution) | Horizontal Frequency(kHz) | Vertical Frequency(Hz) | Polarity(H/V) |                |
|----------------------------|---------------------------|------------------------|---------------|----------------|
| 720 x 400                  | 31.468                    | 70                     | -/+           | DP not support |
| 640 x 480                  | 31.469                    | 60                     | -/-           |                |
| 640 x 480                  | 37.500                    | 75                     | -/-           | DP not support |
| 800 x 600                  | 37.879                    | 60                     | +/+           |                |
| 800 x 600                  | 46.875                    | 75                     | +/+           | DP not support |
| 1024 x 768                 | 48.363                    | 60                     | -/-           |                |
| 1024 x 768                 | 60.023                    | 75                     | +/+           | DP not support |
| 1152 x 864                 | 67.500                    | 75                     | +/+           | DP not support |
| 1280 x 1024                | 63.981                    | 60                     | +/+           |                |
| 1280 x 1024                | 79.976                    | 75                     | +/+           | DP not support |
| 1680 x 1050                | 65.290                    | 60                     | -/+           |                |
| 1920 x 1080                | 67.500                    | 60                     | +/+           | Recommend Mode |

### HDMI AV Timing

| Factory support mode (Preset Mode) | Horizontal Frequency(kHz) | Vertical Frequency(Hz) | HDMI                |
|------------------------------------|---------------------------|------------------------|---------------------|
| 480P                               | 31.50                     | 60                     | ○                   |
| 576P                               | 31.25                     | 50                     | ○                   |
| 720P                               | 37.50                     | 50                     | ○                   |
| 720P                               | 45.00                     | 60                     | ○                   |
| 1080P                              | 56.25                     | 50                     | ○                   |
| 1080P                              | 67.50                     | 60                     | ○<br>Recommend Mode |

## Indicator

| Mode                      | LED Color |
|---------------------------|-----------|
| On Mode                   | White     |
| Sleep Mode (Standby Mode) | LED Off   |
| Off Mode                  | Off       |

## Beep Guide

| Menu  | Location       |
|---|----------------|
| Quick Settings  | 1              |
| Quick Settings - Brightness                           | 1 1            |
| Quick Settings - Brightness                           | 1 1 1 Slider   |
| Quick Settings - Contrast                             | 1 2            |
| Quick Settings - Contrast                             | 1 2 1 Slider   |
| Quick Settings - Ratio                                | 1 3            |
| Quick Settings - Ratio - Wide                         | 1 3 1          |
| Quick Settings - Ratio - Original                     | 1 3 2          |
| Quick Settings - SMART ENERGY SAVING                  | 1 4            |
| Quick Settings - SMART ENERGY SAVING - High           | 1 4 1          |
| Quick Settings - SMART ENERGY SAVING - Low            | 1 4 2          |
| Quick Settings - SMART ENERGY SAVING - Off            | 1 4 3          |
| Picture   | 2              |
| Picture - Picture Mode                                | 2 1            |
| Picture - Picture Mode - Custom                       | 2 1 1          |
| Picture - Picture Mode - Reader1                      | 2 1 2          |
| Picture - Picture Mode - Reader2                      | 2 1 3          |
| Picture - Picture Mode - Photo                        | 2 1 4          |
| Picture - Picture Mode - Cinema                       | 2 1 5          |
| Picture - Picture Mode - Color Weakness               | 2 1 6          |
| Picture - Picture Mode - Game                         | 2 1 7          |
| Picture - Picture Adjust                              | 2 2            |
| Picture - Picture Adjust - SUPER RESOLUTION+          | 2 2 1          |
| Picture - Picture Adjust - SUPER RESOLUTION+ - High   | 2 2 1 1        |
| Picture - Picture Adjust - SUPER RESOLUTION+ - Middle | 2 2 1 2        |
| Picture - Picture Adjust - SUPER RESOLUTION+ - Low    | 2 2 1 3        |
| Picture - Picture Adjust - SUPER RESOLUTION+ - Off    | 2 2 1 4        |
| Picture - Picture Adjust - Sharpness                  | 2 2 2          |
| Picture - Picture Adjust - Sharpness                  | 2 2 2 1 Slider |
| Picture - Picture Adjust - Black Level                | 2 2 3          |
| Picture - Picture Adjust - Black Level - High         | 2 2 3 1        |
| Picture - Picture Adjust - Black Level - Low          | 2 2 3 2        |
| Picture - Picture Adjust - Response Time              | 2 2 4          |

| Menu  | Location         |
|---|------------------|
| Picture - Picture Adjust - Response Time - High     | 2 2 4 1          |
| Picture - Picture Adjust - Response Time - Middle   | 2 2 4 2          |
| Picture - Picture Adjust - Response Time - Low      | 2 2 4 3          |
| Picture - Picture Adjust - Response Time - Off      | 2 2 4 4          |
| Picture - Picture Adjust - DFC                      | 2 2 5            |
| Picture - Picture Adjust - DFC - On                 | 2 2 5 1          |
| Picture - Picture Adjust - DFC - Off                | 2 2 5 2          |
| Picture - Picture Adjust - Black Stabilizer         | 2 2 6            |
| Picture - Picture Adjust - Black Stabilizer         | 2 2 6 1 Slider   |
| Picture - Color Adjust                              | 2 3              |
| Picture - Color Adjust - Gamma                      | 2 3 1            |
| Picture - Color Adjust - Gamma - Gamma0             | 2 3 1 1          |
| Picture - Color Adjust - Gamma - Gamma1             | 2 3 1 2          |
| Picture - Color Adjust - Gamma - Gamma2             | 2 3 1 3          |
| Picture - Color Adjust - Gamma - Off                | 2 3 1 4          |
| Picture - Color Adjust - Color Temp                 | 2 3 2            |
| Picture - Color Adjust - Color Temp - Warm          | 2 3 2 1          |
| Picture - Color Adjust - Color Temp - Medium        | 2 3 2 2          |
| Picture - Color Adjust - Color Temp - Cool          | 2 3 2 3          |
| Picture - Color Adjust - Color Temp - Custom        | 2 3 2 4          |
| Picture - Color Adjust - Red                        | 2 3 3            |
| Picture - Color Adjust - Red                        | 2 3 3 1 Slider   |
| Picture - Color Adjust - Green                      | 2 3 4            |
| Picture - Color Adjust - Green                      | 2 3 4 1 Slider   |
| Picture - Color Adjust - Blue                       | 2 3 5            |
| Picture - Color Adjust - Blue                       | 2 3 5 1 Slider   |
| Picture - Color Adjust - Six Color                  | 2 3 6            |
| Picture - Color Adjust - Six Color - Red Hue        | 2 3 6 1          |
| Picture - Color Adjust - Six Color - Red Hue        | 2 3 6 1 1 Slider |
| Picture - Color Adjust - Six Color - Red Saturation | 2 3 6 2          |
| Picture - Color Adjust - Six Color - Red Saturation | 2 3 6 2 1 Slider |
| Picture - Color Adjust - Six Color - Green Hue      | 2 3 6 3          |

| Menu  | Location          |
|---|-------------------|
| Picture - Color Adjust - Six Color - Green Hue          | 2 3 6 3 1 Slider  |
| Picture - Color Adjust - Six Color - Green Saturation   | 2 3 6 4           |
| Picture - Color Adjust - Six Color - Green Saturation   | 2 3 6 4 1 Slider  |
| Picture - Color Adjust - Six Color - Blue Hue           | 2 3 6 5           |
| Picture - Color Adjust - Six Color - Blue Hue           | 2 3 6 5 1 Slider  |
| Picture - Color Adjust - Six Color - Blue Saturation    | 2 3 6 6           |
| Picture - Color Adjust - Six Color - Blue Saturation    | 2 3 6 6 1 Slider  |
| Picture - Color Adjust - Six Color - Cyan Hue           | 2 3 6 7           |
| Picture - Color Adjust - Six Color - Cyan Hue           | 2 3 6 7 1 Slider  |
| Picture - Color Adjust - Six Color - Cyan Saturation    | 2 3 6 8           |
| Picture - Color Adjust - Six Color - Cyan Saturation    | 2 3 6 8 1 Slider  |
| Picture - Color Adjust - Six Color - Magenta Hue        | 2 3 6 9           |
| Picture - Color Adjust - Six Color - Magenta Hue        | 2 3 6 9 1 Slider  |
| Picture - Color Adjust - Six Color - Magenta Saturation | 2 3 6 10          |
| Picture - Color Adjust - Six Color - Magenta Saturation | 2 3 6 10 1 Slider |
| Picture - Color Adjust - Six Color - Yellow Hue         | 2 3 6 11          |
| Picture - Color Adjust - Six Color - Yellow Hue         | 2 3 6 11 1 Slider |
| Picture - Color Adjust - Six Color - Yellow Saturation  | 2 3 6 12          |
| Picture - Color Adjust - Six Color - Yellow Saturation  | 2 3 6 12 1 Slider |
| Picture - Color Adjust - Reset                          | 2 3 7             |
| Picture - Color Adjust - Reset - Reset                  | 2 3 7 1           |
| Picture - Color Adjust - Reset - Cancel                 | 2 3 7 2           |
| Picture - Display                                       | 2 4               |
| Picture - Display - Horizontal                          | 2 4 1             |
| Picture - Display - Horizontal                          | 2 4 1 1 Slider    |
| Picture - Display - Vertical                            | 2 4 2             |
| Picture - Display - Vertical                            | 2 4 2 1 Slider    |
| Picture - Display - Clock                               | 2 4 3             |

| Menu                                     | Location       |
|--|----------------|
| Picture - Display - Clock                | 2 4 3 1 Slider |
| Picture - Display - Phase                | 2 4 4          |
| Picture - Display - Phase                | 2 4 4 1 Slider |
| Sound                                    | 3              |
| Sound - Volume                           | 3 1            |
| Sound - Volume                           | 3 1 1 Slider   |
| Sound - Main audio                       | 3 2            |
| Sound - Main audio - HDMI                | 3 2 1          |
| Sound - Main audio - DisplayPort         | 3 2 2          |
| Sound - Main audio - Audio-In            | 3 2 3          |
| General                                  | 4              |
| General - Language                       | 4 1            |
| General - Language - English             | 4 1 1          |
| General - Language - German              | 4 1 2          |
| General - Language - French              | 4 1 3          |
| General - Language - Spanish             | 4 1 4          |
| General - Language - Italian             | 4 1 5          |
| General - Language - Swedish             | 4 1 6          |
| General - Language - Finnish             | 4 1 7          |
| General - Language - Portuguese          | 4 1 8          |
| General - Language - Portuguese (Brazil) | 4 1 9          |
| General - Language - Polish              | 4 1 10         |
| General - Language - Russian             | 4 1 11         |
| General - Language - Greek               | 4 1 12         |
| General - Language - Ukrainian           | 4 1 13         |
| General - Language - Chinese             | 4 1 14         |
| General - Language - Traditional Chinese | 4 1 15         |
| General - Language - Japanese            | 4 1 16         |
| General - Language - Korean              | 4 1 17         |
| General - Language - Hindi               | 4 1 18         |
| General - Power Led                      | 4 2            |
| General - Power Led - On                 | 4 2 1          |
| General - Power Led - Off                | 4 2 2          |
| General - Automatic Standby              | 4 3            |
| General - Automatic Standby - 4H         | 4 3 1          |
| General - Automatic Standby - 6H         | 4 3 2          |

| Menu   | Location |
|--|----------|
| General - Automatic Standby - 8H               | 4 3 3    |
| General - Automatic Standby - Off              | 4 3 4    |
| General - Resolution(Only D-sub)               | 4 4      |
| General - Resolution(Only D-sub)<br>- 1024*768 | 4 4 1    |
| General - Resolution(Only D-sub)<br>- 1280*768 | 4 4 2    |
| General - Resolution(Only D-sub)<br>- 1360*768 | 4 4 3    |
| General - Resolution(Only D-sub)<br>- 1366*768 | 4 4 4    |
| General - Resolution(Only D-sub)<br>- Off      | 4 4 5    |
| General - Resolution(Only D-sub)<br>- 1280*960 | 4 4 1    |
| General - Resolution(Only D-sub)<br>- 1600*900 | 4 4 2    |
| General - Resolution(Only D-sub)<br>- Off      | 4 4 3    |
| General - Resolution(Only D-sub)<br>- 1440*900 | 4 4 1    |
| General - Resolution(Only D-sub)<br>- 1600*900 | 4 4 2    |
| General - Resolution(Only D-sub)<br>- Off      | 4 4 3    |
| General - OSD Lock                             | 4 5      |
| General - OSD Lock - On                        | 4 5 1    |
| General - OSD Lock - Off                       | 4 5 2    |
| Auto Configuration                             | 5        |
| Auto Configuration - On                        | 5 1      |
| Auto Configuration - Off                       | 5 2      |
| Reset  | 6        |
| Reset - Reset                                  | 6 1      |
| Reset - Cancel                                 | 6 2      |



**Supplier's Declaration of Conformity**

|                   |  |
|-------------------|--|
| Trade Name        | LG   |
| Responsible Party | LG Electronics USA, Inc.   |
| Address           | 111 Sylvan Avenue, North Building,<br>Englewood Cliffs, NJ 07632 |
| E-mail            | lg.environmental@lge.com   |

Make sure to read the Safety Precautions before using the product.  
The model and serial number of the product are located on the back and on one side of the product.  
Record them below in case you ever need service.

MODEL \_\_\_\_\_

SERIAL \_\_\_\_\_



This Product qualifies for ENERGY STAR®  
Changing the factory default configuration and settings or enabling certain optional features and functionalities may increase energy consumption beyond the limits required for ENERGY STAR® certification.  
Refer to [ENERGYSTAR.gov](http://ENERGYSTAR.gov) for more information on the ENERGY STAR® program.