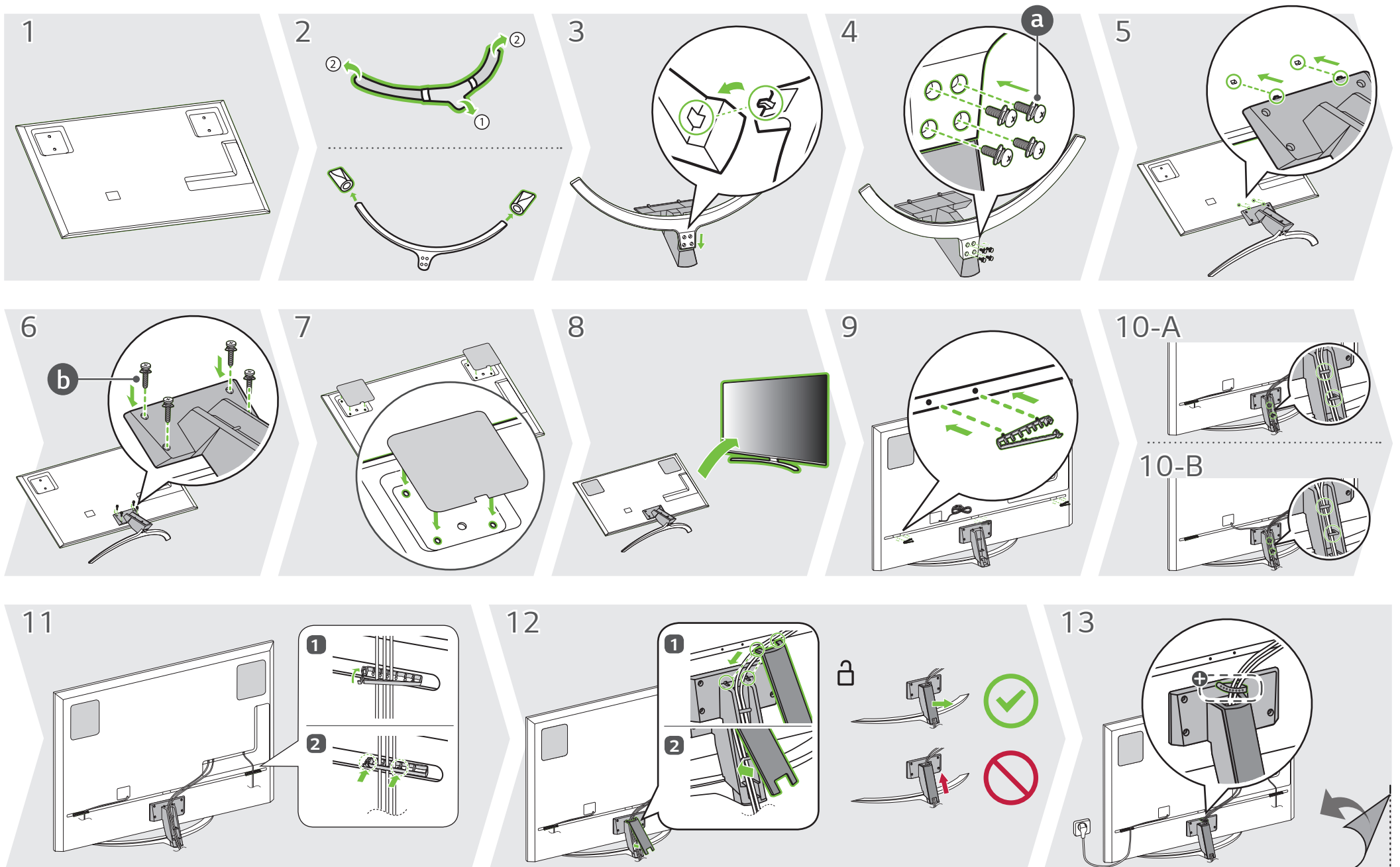
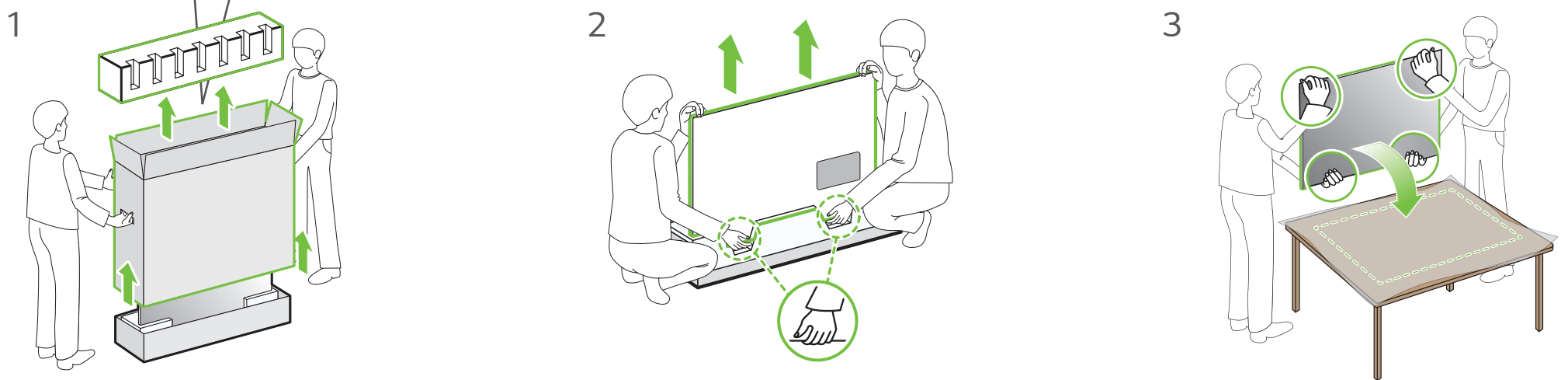
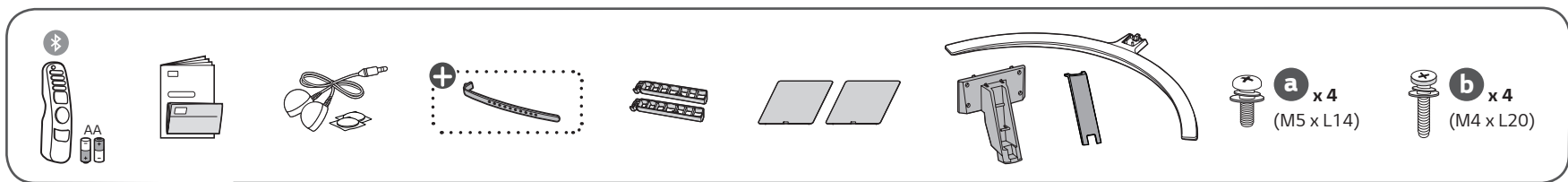
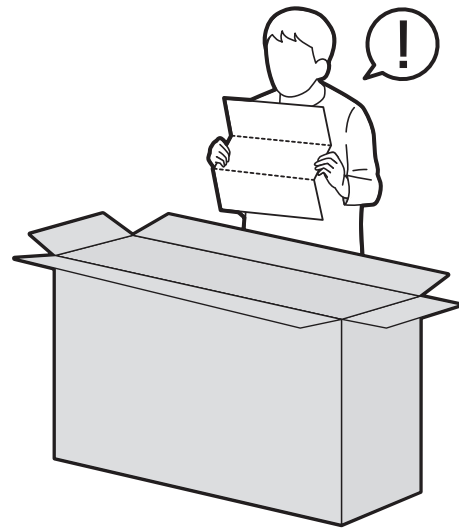
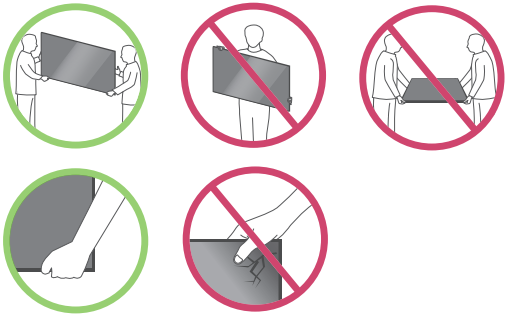
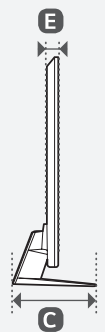
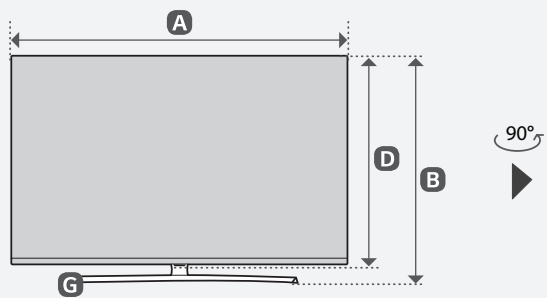
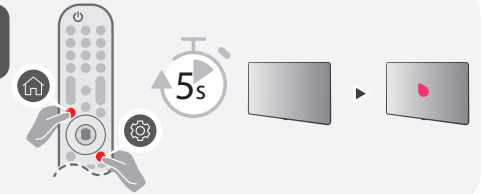
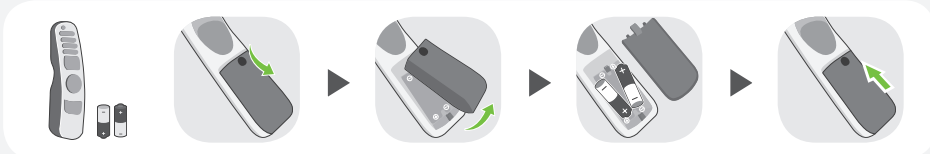
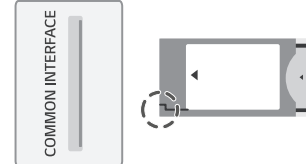
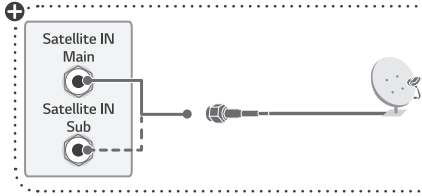


NANO96\*





	A	B	C	D	E	F	F-G
	(mm)					(kg)	
75NANO963PA 75NANO966PA 75NANO969PA	1673	1035	405	963	44.9	42.7	39.3
Power requirement				AC 100-240 V ~ 50 / 60 Hz			



**English** • Read Safety and Reference.

**Русский** • Прочтите Руководство по технике безопасности.

**Українська** • Прочитайте "Правила безпеки та довідкова інформація".

**Қазақша** • Қауіпсіздік нұсқаулығын оқыңыз.

**O'zbekcha** • Xavfsizlik bo'yicha ko'rsatmalar va havolalar o'qib chiqing.

**Монгол** • Аюулгүй ажиллагааны зааварчилгаа унш.

⊕ : Depending on model / В зависимости от модели / Залежно від моделі / Үлгіге байланысты / Rusumiga qarab / Загвараас хамаарна