



# OWNER'S & INSTALLATION MANUAL AIR CONDITIONER

Please read this installation manual completely before installing the product.  
Installation work must be performed in accordance with the national wiring standards by authorized personnel only.  
Please retain this installation manual for future reference after reading it thoroughly.

WIRED REMOTE CONTROLLER



MFL72117601  
Rev.02\_102424

## TIPS FOR SAVING ENERGY

Here are some tips that will help you minimize the power consumption when you use the air conditioner. You can use your air conditioner more efficiently by referring to the instructions below:

- Do not cool excessively indoors. This may consume more electricity.
- Block sunlight with blinds or curtains while you are operating the air conditioner.
- Keep doors or windows closed tightly while you are operating the air conditioner.
- Adjust the direction of the air flow vertically or horizontally to circulate indoor air.
- Speed up the fan to cool or warm indoor air quickly, in a short period of time.
- Clean the air filter once every 2 weeks. Dust and impurities collected in the air filter may block the air flow or reduce the cooling / dehumidifying functions.

### For your records

Staple your receipt to this page in case you need it to prove the date of purchase or for warranty purposes. Write the model number and the serial number here:

Model number : \_\_\_\_\_

Serial number : \_\_\_\_\_

You can find them on a label on the side of each unit.

Dealer's name : \_\_\_\_\_

Date of purchase : \_\_\_\_\_

## IMPORTANT SAFETY INSTRUCTIONS

### **READ ALL INSTRUCTIONS BEFORE USING THE APPLIANCE.**

Always comply with the following precautions to avoid dangerous situations and ensure peak performance of your product

### **WARNING**

This symbol indicates a potentially hazardous situation which, if not avoided could result in death or serious injury.

### **CAUTION**

This symbol indicates a potentially hazardous situation which, if not avoided, may result in minor or moderate injury.

### **WARNING**

#### Installation

- For electrical work, contact the dealer, seller, a qualified electrician, or an authorized service Center.
  - Do not disassemble or repair the product. There is risk of fire, electric shock, explosion, equipment malfunction, or injury.
- Request to the service center or installation specialty store when reinstalling the installed product.
  - There is risk of fire, electric shock, explosion, equipment malfunction, or injury.
- Do not disassemble, fix, and modify products randomly.
  - There is risk of fire, electric shock, explosion, equipment malfunction, or injury.
- The product shall be installed according to the national standards and local code.
- Apply totally enclosed noncombustible conduit in case of local building code requiring plenum.
- Use appropriate unit mounting procedures.
- Avoid direct sunlight.
- Avoid moist areas.

#### In-Use

- Do not place flammable objects close to the product.
  - There is risk of fire, electric shock, explosion, equipment malfunction or injury.
- Do not allow product to get wet.
  - There is risk of fire, electric shock, explosion, equipment malfunction or injury.
- Avoid dropping the product.
  - There is risk of fire, electric shock, explosion, equipment malfunction or injury.
- If product gets wet, contact your dealer or authorized service center.
  - There is risk of fire, electric shock, explosion, equipment malfunction, or injury. If the instructions are not followed, it may cause death or severe injury of the user.
- Do not use sharp or pointed objects on product.
  - There is risk of fire, electric shock, explosion, equipment malfunction or injury.
- Do not touch or pull the lead wire with wet hands.
  - There is risk of product breakdown or electric shock.

### **CAUTION**

#### Installation

- If anyone other than a licensed professional installs, repairs, or alters LG Electronics air conditioning products, the warranty is voided.
  - All costs associated with repair are then the full responsibility of the owner.
- Do not install the unit in potentially explosive atmospheres.

#### In-use

- Do not clean using powerful detergents like solvent but use soft cloths.
  - There is risk of fire, electric shock, explosion, equipment malfunction or deformation.
- Do not press the screen using powerful pressure.
  - There is risk of product break-down or malfunction.

## TABLE OF CONTENTS

### 2 TIPS FOR SAVING ENERGY

### 2 IMPORTANT SAFETY INSTRUCTIONS

### 5 DESCRIPTION

- 5 Standard Remote Controller
- 5 Accessories

### 6 HOME

- 6 Screen Configuration
- 7 Mode
- 7 Menu
- 7 Operate
- 13 Temperature Setting
- 14 Check Room Temperature
- 15 Fan Speed Setting
- 16 Timer Settings

### 21 MENU SCREEN

- 22 Sub Function

### 26 SCHEDULE

- 27 Schedule List
- 28 Add Schedule
- 32 Delete Schedule
- 32 Edit Schedule
- 33 Deactivate Schedule
- 34 Set Schedule Holiday/Initialization

### 37 ENERGY

### 38 MONITORING

### 39 SETTINGS

- 40 General Settings
- 51 Service
- 52 Air Conditioner Settings

### 70 INSTALLATION

- 70 Installation of Remote Controller
- 73 Group control
- 75 Installer Setting

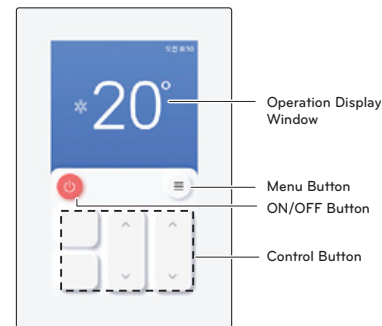
### 116 GUIDE TO DIFFERENT MODE OPERATION/OPEN SOURCE SOFTWARE

- 116 Different mode operation

### 117 OPEN SOURCE SOFTWARE NOTICE INFORMATION

## DESCRIPTION

### Standard Remote Controller



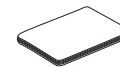
### Accessories



Connection Cable  
(10 M)



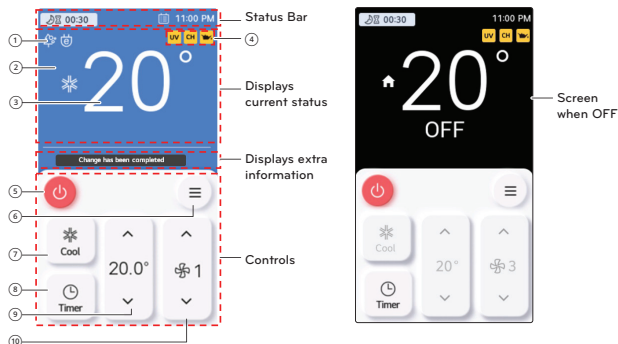
Fixing Screw  
(4 EA)



Simple OWNERS &  
INSTALLATION MANUAL

## HOME

## Screen Configuration



	Description
Status Bar	Displays current time and reservation/timer/lock information
Current Status Display	Displays the current status of the remote ① Displays any running additional functions ② Displays the currently set mode ③ Displays current temperature ④ Displays warning error information
Extra Information Display	Displays the control information title and notifications
Controls	You can set control commands for each button. When entering another screen, the buttons change to buttons that match the screen. ⑤ ON/OFF: Turn power ON/OFF ⑥ Menu: Move to the Menu screen ⑦ Mode: Move to the Mode settings screen ⑧ Timer: Move to the Timer settings screen ⑨ Set temperature: Set the temperature with the UP/DOWN buttons and display the temperature ⑩ Fan speed: Set the fan speed with the UP/DOWN buttons and display the current fan speed
Screen When OFF	Screen entered when not operating

## Operate

- If you press the button while the product is stopped, the product begins operating.
- If you press the button while the product is operating, the product will stop.

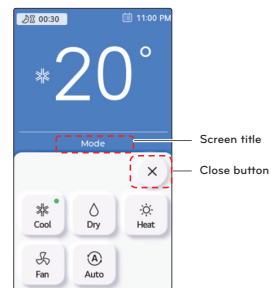
## Menu

- Press the menu button to enter the menu screen. For more information on the functions, see the detailed description of each menu.

## Mode

Press the Mode button to move to the Mode selection screen. When entering the mode screen, the screen title is displayed at the top.

If you press the close button without selecting a mode, you move to the Home screen without changing the mode.



Operation	Description
	Cool the room to the desired temperature.
	It removes the moisture with cooling.
	Heats the room to the desired room temperature.
	The product automatically provides the appropriate fan speed based on the temperature of the room.
	Fan only operation, no cooling or heating.

## Cooling Operation

Cooling operation's minimum setting temperature is 20 °C.

For some types of the indoor units, the desired temperature can be controlled in the units of 1 °C or 0.5°C.

- Set the desired temperature lower than the indoor temperature.
- Indoor temperature is displayed on the default screen of the remote controller.
- If the setpoint is set higher than the room temperature, then the unit will remain in the cool mode but will not begin to cool change unit to until. The room temperature exceeds the setpoint.
- If the unit is operating in cooling mode and the On/Off button is pressed, the cooling operation will shut off.



### What is 3 minute delay function?

After the cooling stops, when the product is started right away, the reason that the cold wind to air does not come out is that it is the function to protect the compressor.

The compressor starts after 3 minutes and the cold wind comes out.

### ! NOTE

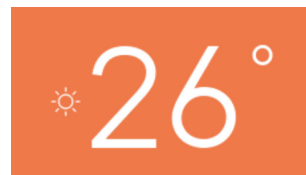
In the cooling operation, you can select the desired temperature in the range of 20 °C ~ 30 °C. The favorable temperature difference between the indoor temperature and the outdoor temperature is 5°C.

## Heating Operation

The heating operation's minimum setting temperature is 16 °C.

For some types of the indoor units, the desired temperature can be controlled in the units of 1 °C or 0.5 °C.

- Set the desired temperature higher than the indoor temperature.
- Indoor temperature is displayed on the default screen of the remote controller.
- When the desired temperature is set lower than the indoor temperature, warm air doesn't come out, but for some products, the fan will recirculate room air, or stop altogether.
- If the unit is operating in heating mode and the On/Off button is pressed the heating operation will shut off.



### ! NOTE

In the heating operation, you can select the desired temperature in the range of 16°C ~ 30°C. Heating operation is operated only in cooling/heating model. The heating is not operated in cooling exclusive model.

### Dry Operation

Dry operation's initial fan speed is "Low".

Dry operation does not have a separate desired temperature.

- If the unit is operating in dehumidification (dry) mode and the On/Off button is pressed the dehumidification (dry) operation will shut off.



#### ! NOTE

If dry mode is used in the rainy season, or when the humidity is high, the unit can have both the effective dehumidification and cooling operation at the same time.

### Fan Only Operation

Fan only operation's initial fan speed is "High".

Fan only operation does not have a separate desired temperature.

- If you unit is operating in fan only mode and you press the [On/Off] button the the unit will stop.



#### ! NOTE

It provides the Fan only operation without temperature control, with recirculation of indoor air.

## Auto operation

Auto operation's initial desired temperature is 25 °C.

The cooling exclusive model's initial desired temperature is "It's Fine".

Cooling/heating model's desired temperature can be controlled in the units of 1°C or 0.5 °C.

For cooling exclusive model, the value can be controlled from "hot" stage to "cold" stage.

- Hot
- A little hot
- It's fine
- A little cold
- Cold

- If the unit is operating in ai/auto mode and the On/Off button is pressed the ai/auto operation will turn off.



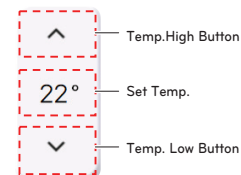
### ! NOTE

If the product is a cooling/heating model, in the auto operation, the desired temperature can be selected in the range of 18 °C ~ 30 °C.

If it does not operate as you wish, select another operation mode.

## Temperature Setting

You can set the desired temperature by pressing the temperature UP/DOWN button. It shows you the set desired temperature.



Mode	Description
Cool	If the desired temperature is higher than the indoor temperature, the cooling is not performed. Set the desired temperature lower than the indoor temperature. You can select in the range of 20 °C ~ 30 °C.
Heat	If the desired temperature is lower than the indoor temperature, the heating is not performed. Set the desired temperature higher than the indoor temperature. You can select in the range of 16°C ~ 30°C.
Auto	For cooling/heating product, you can select in the range of 18 °C ~ 30 °C. For cooling exclusive product, you can select Hot, A little hot, Adequate, A little Cold, and Cold.

## Check Room Temperature

You can check the current indoor temperature.

- In the remote controller's the main screen, you can check the indoor temperature.



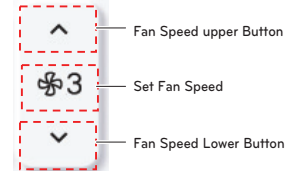
### ! NOTE

The temperature distribution in the remote controller installation space is not uniform, so there can be a little difference between the temperature you actually feel and the remote controller's room temperature display

Because of location of Temperature sensing, the real room temperature and the this displayed value can be different.

## Fan Speed Setting

You can set the fan speed by pressing the fan speed UP/DOWN button. It shows you the set fan speed.



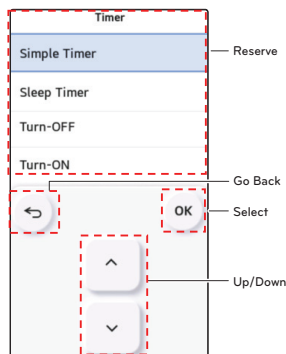
🌀 1	Low
🌀 2	Middle
🌀 3	High
🌀 A	Auto

### ! NOTE

For some product some fan speed may not be available.

## Timer Settings

When you press the timer button, you move to the screen where you can reserve a time. You can move to the details screen by selecting the menu you want to set in the timer settings screen.



- Simple Timer : Easily schedule when to turn the product on or off.

### NOTE

- If the product is on, it turns off after the set time has passed.
- If the product is off, it turns on after the set time has passed.
- If the product is turned on or off before the simple timer begins operating, the set timer is canceled.

- Sleep Timer: Turn the air conditioner on or off in sleep mode after a certain period before sleeping.

### NOTE

- The sleep timer can be set while the product is operating.
- If the product is turned off before the sleep timer begins operating, the set timer is canceled.

- Turn-OFF: The product automatically turns off when it reaches the reserved time.

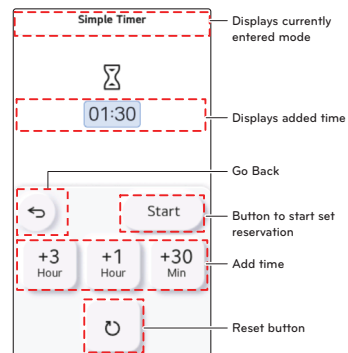
- Turn-ON: The product automatically turns on when it reaches the reserved time.

### NOTE

- The Turn-ON timer is not canceled even if the product turns on or off before the timer begins operating.

## Simple / Sleep Timer

Press the UP/DOWN button to select the reservation mode and then press the OK button to enter the reservation mode you want.



- You can add to the reservation time by pressing the Add time buttons. Set the time you want and press the Start button to activate the reservation and move to the Home screen.



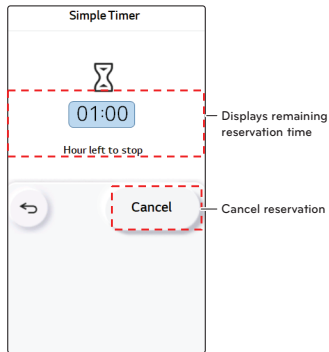
- You can add time equal to the time of the button (3 Hr. / 1 Hr. / 30 Min).

- If the product is operating, the product will stop after the added time. If the product is stopped, the product will begin operating after the added time.

### NOTE

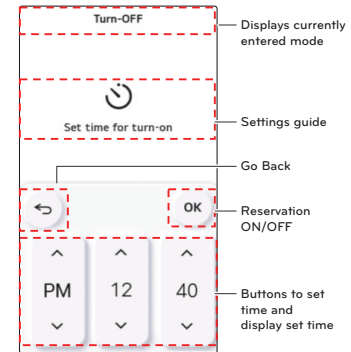
The reservation time cannot exceed 7 hours. If exceeded, a notification popup will appear. If you press Go Back while setting the time, the settings will not be saved and you will move to the previous screen.

- When the reservation is activated, the Add time buttons disappear and the current status is displayed as on the screen below.
- When you press the cancel reservation button, the reservation is canceled and you move to the initial timer screen.



## Turn ON / OFF

Press the UP/DOWN button to select the reservation mode and then press the OK button to enter the reservation mode you want.



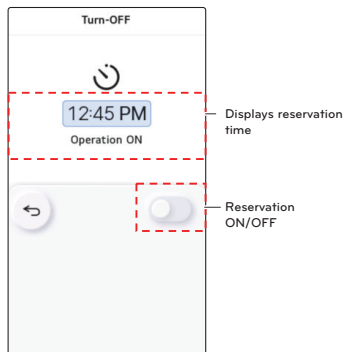
- You can set the on/off time by pressing the buttons to set the time. After you've set the time you want, press the reservation ON/OFF button to activate the reservation and move to the Home screen.

### ! NOTE

When setting the time, it can be set in 10-minute increments.

When the reservation is activated, the buttons to set the time disappear and the current status is displayed as on the screen below.

When the reservation changes from ON to OFF, the reservation is canceled and you move to the initial timer screen.



### NOTE







You can set to Turn OFF in the same way.  
You can check the current reservation status in the Status Bar at the top of the Home screen.



## MENU SCREEN

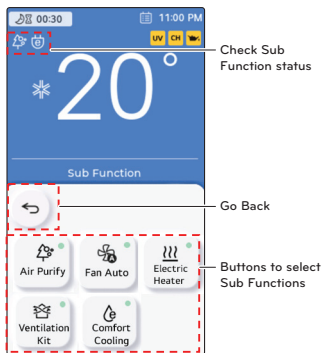
Press the menu button on the Home screen to move to the Menu screen.



Menu Button	Description
	Press the button to go to the Sub Function screen.
	Press the button to go to the Schedule setting screen.
	Press the button to go to the Energy Monitoring screen.
	Press the button to go to the Monitoring screen.
	Press the button to go to the Settings screen.
	Press the close button to return to the Home screen.

## Sub Function

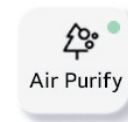
Press the Sub Function button on the menu screen to move to the related screen. You can activate/deactivate the Sub Function by pressing the corresponding button.



Menu Button	Description
	Sub Function is activated
	Sub Function is deactivated

## Air Purify Setting

It makes the indoor air clean and pleasant.



### ! NOTE

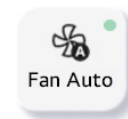
The air purify function is an additional function, and it may not be displayed/operated in some products.

If you want air purify single operation, set air purify in the wind only operation.

## Fan Auto Setting

This is a function to set the indoor unit fan control when the outdoor unit thermal off after reaching the product target temperature.

- When set to Deactivated : In cooling mode, the fan operates at low fan speed, and during heating, the fan operates periodically to remove latent heat.
- When set to Activated : The fan stops when the outdoor unit is Thermal Off, and operates at the set fan speed when Thermal On.



### ! NOTE

The fan auto function is an additional function, and it may not be displayed/operated in some products.

### Electric Heater Setting

It is the function to reinforce the heating capability by turning on the electric heater during the heating operation.



#### ! NOTE

It can be set only in the heating operation.

The heater function is an additional function, and it may not be displayed/operated in some products.

### Ventilation kit Setting

Function enables operation of an optional ventilation kit with indoor units



#### ! NOTE

The ventilation kit function is an additional function, and it may not be displayed/operated in some products.

### Comfort Cooling Setting

The comfort cooling is the function to automatically control the cooling strength to maintain the pleasant feeling without turning off the product after the indoor temperature reached the desired temperature.



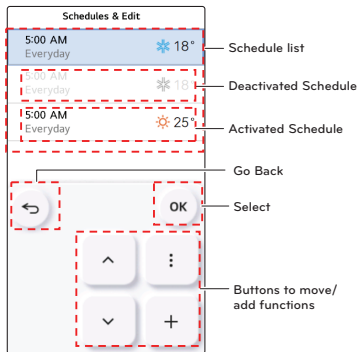
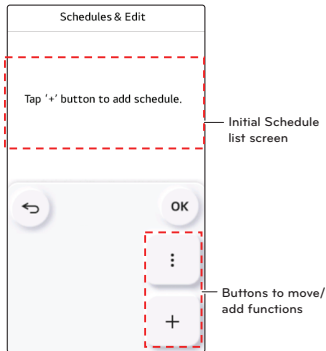
#### ! NOTE

The comfort cooling function is an additional function, and it may not be displayed/operated in some products.

The comfort cooling function is only possible when the product is in the cooling operation.

## SCHEDULE

Press the Schedule button to go to the settings screen.





## Schedule List


Displays a summary of the mode/set temperature and schedule settings.

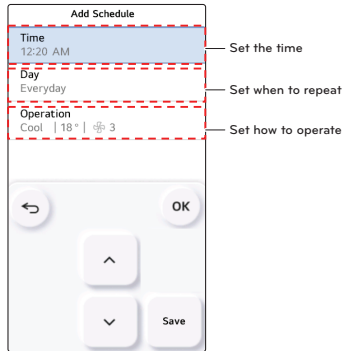
You can set up to 30 of them in the order they were added.


- Select the list you want with the  $\nabla$  and  $\wedge$  buttons and then press the OK button to move to the Edit Schedules screen for the selected list.

Button	Description
	Additional functions - You can activate the additionally supported functions screen.
	Add - Move to the Add schedule list screen.

## Add Schedule

Press the button  on the Schedule settings screen to move to the Add Schedule screen. Select the list you want with the  $\nabla$  and  $\blacktriangle$  buttons and then press the OK button to move to the Edit Schedules screen for the selected list.

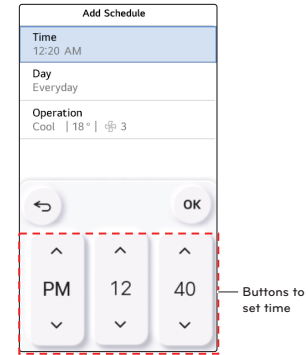


Button	Description
	Save Schedule - You can save the set schedule content.

## Set the Time

You can set the time.

Select the time you want with the  $\nabla$  and  $\blacktriangle$  buttons and then press the OK button to move to the Edit Schedules screen. The time setting rounds up to 10 minutes.

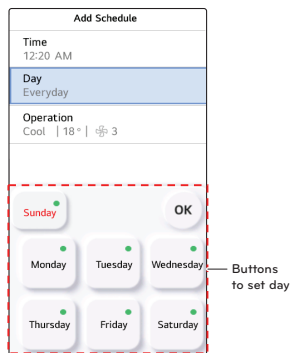


## Set when to Repeat

You can repeat the Schedule.

Select the button of the days you want and press the "OK" button to move to the Edit Schedules screen.

- Default is displayed as Everyday.
- When set Monday to Sunday, "Everyday"
- When set Monday to Friday, "Weekday"
- When set Saturday to Sunday, "Weekend"
- When set to a specific day of the week, lists the days

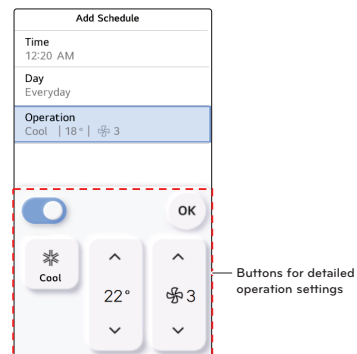


## Set how to Operate

You can set the detailed operation of the schedule.

- After setting the mode, desired temperature, and fan speed, press the OK button to move to the Edit Schedules screen.

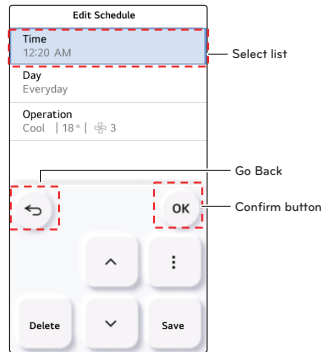
- After setting the time, repetition, and operation, press the Save button on the Edit Schedules screen to add it to the Schedule list.



## Edit Schedule

If you need to edit the set schedule, select it from the Schedule list and press the "OK" button to move to the Edit Schedules screen.


- Move to the list, set the same way you add a schedule, and then press the Save button to finish editing the schedule.

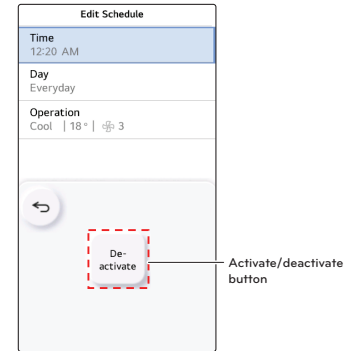


## Delete Schedule


When you move to the list of the schedule you want to delete and press the Delete button, a popup will appear to delete the schedule. Press the OK button to delete the list.

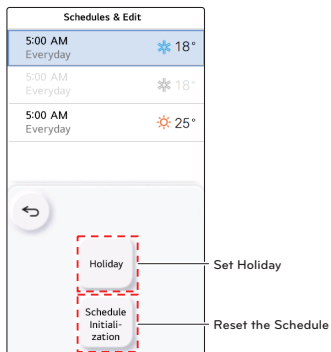
## Deactivate Schedule



Press the  button on the Edit Schedules screen to activate or deactivate the selected Schedule list.



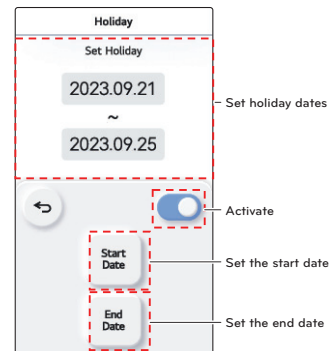
## Set Schedule Holiday/Initialization




Press the  additional functions button on the Schedule list screen to move to the screen where you can set additional functions.



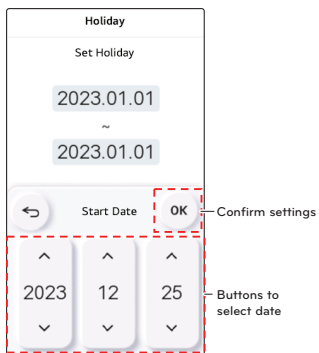
Button	Description
	Set Holiday - Move to the Holiday setting period screen.
	Reset the Schedule - Resets the saved Schedule list.

Press the Set Holiday button to move to the settings screen.



Button	Description
	Activate Holiday button - Activate/Deactivate
	Set the start date - Move to the screen to set the start date.
	Set the end date - Move to the screen to set the end date.

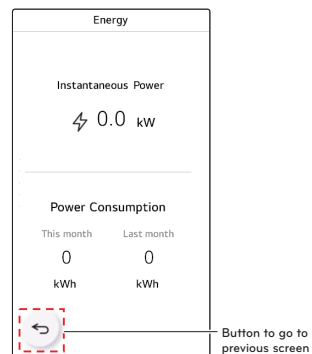
Press the set the start/end date buttons to move to the date settings screen.  
 - After selecting the year, month, and day, press the OK button to set the date.



## ENERGY

Press the Energy button on the menu screen to move to the related screen.

- On the Energy screen, you can check the current amount of power consumed, this month's accumulated usage, and last month's accumulated usage.



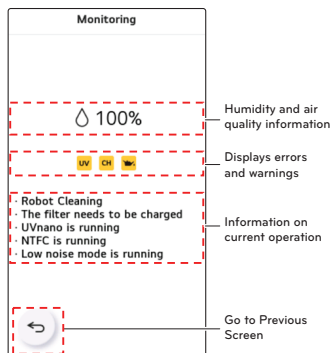
### ! NOTE




Depending on the product type, some functions may not be displayed or available.  
 It may be somewhat different from the actual amount of power consumed, so use it only as a reference.

## MONITORING

Press the Monitoring button on the menu screen to move to the related screen.

- On the Monitoring screen, you can check information about current humidity, air quality, and product operation.
- You can check if the product has any problems through the error and warning icons.



Icon	Description
	Displayed when a product error occurs
	Displayed when an UVnano-related error occurs
	Displayed when a GHP Oil-related error occurs

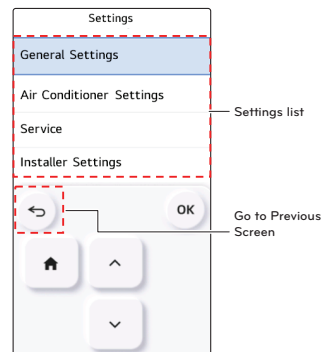
### ! NOTE


Depending on the product, this function may not be supported.

## SETTINGS

Press the Setting button on the menu screen to move to the Settings screen.

- Select the list you want with the  $\nabla$  and  $\blacktriangle$  buttons and then press the OK button to move to the screen for the selected list.



Icon	Description
	Return to Home screen

## General Settings

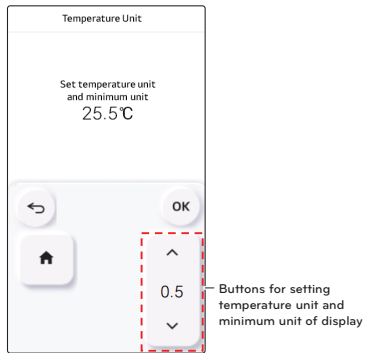
You can select general settings such as time, and units and change them as you want.

- Select the list you want with the  $\nabla$  and  $\wedge$  buttons and then press the OK button to move to the screen for the selected list.

### Temperature Unit Setting

Set the temperature unit displayed on the remote controller.

- In the user setting list, select the temperature unit setting category, and press [OK] button to move to the detail screen.



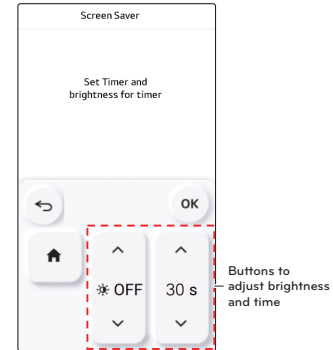
### ! NOTE

The temperature unit function may not work or work differently in some products.  
You cannot set the temperature unit in the slave wired remote controller.

## Screen Saver

You can set the brightness of the screen when entering the standby screen and how long to before entering the standby screen when there is no operation.

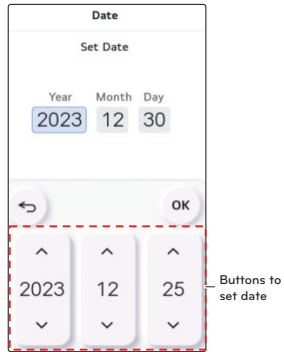
- Brightness can be set to 4 levels: OFF / 10% / 20% / 30%.
- The standby screen entry time can be set to 3 levels: 15s / 30s / 60s.



## Date Setting

Set the date displayed on the remote controller.

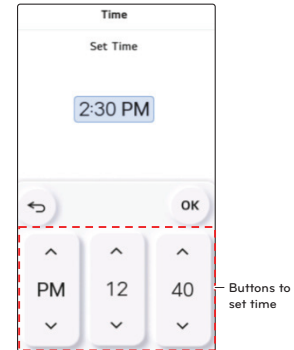
- In the user setting list, select the date category, and press [OK] button to move to the detail screen.
- After the setting, if you press [OK] button, the setting is saved and moves to the previous screen.



## Time Setting

Set the time displayed on the remote controller.

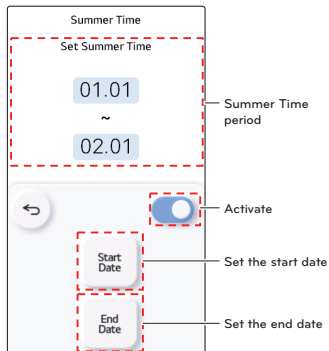
- In the user setting list, select the time category, and press [OK] button to move to the detail screen.
- After the setting, if you press [OK] button, the setting is saved and moves to the previous screen.
  - Set the time and press the OK button to finish setting the time.






## Summer Time Setting

Set the daylight savings time dates in the remote controller.

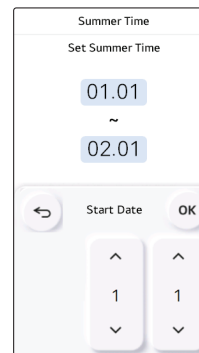
- In the user setting list, select the summer time setting category, and press [OK] button to move to the detail screen.
  - Summer time: The system to advance the time by 1 hour from the spring when the day is longer and return back in the fall when the day gets shorter.
  - When it becomes AM 02:00 on the DST start date, the current time changes to AM 03:00, and when it becomes AM 02:00 of the DST end date, the current time changes to AM 01:00.



Button	Description
	Activate Summer Time period - Activate/Deactivate - If the set period passes, it is automatically deactivated.
	Set the start date - Move to the screen to set the start date.
	Set the end date - Move to the screen to set the end date.

Press the set the start/end date buttons to move to the date settings screen.

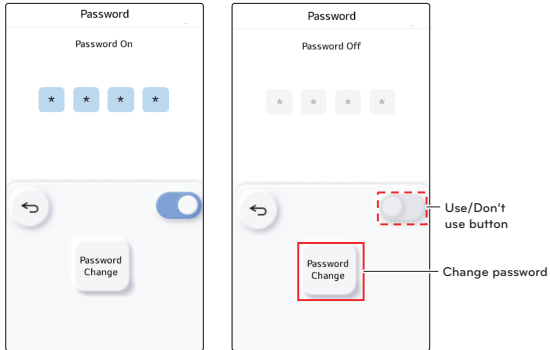
- After selecting the year, month, and day, press the OK button to finish setting the date.





## Password Setting

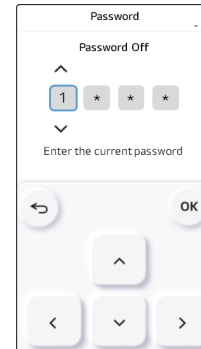
Set the password to prevent unauthorized change to remote controller settings.

- Select the user password setting category, and press [OK] button to move to the detail screen.



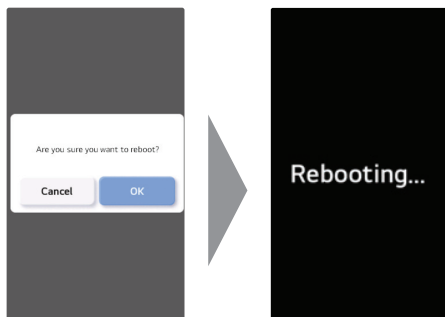
Button	Description
	Use/Don't use password - Use/Don't use
	Change password - Move to the change password screen.

- After setting, you can enter the password from 0 to 9 with the V and ^ buttons and then move between the digits with the < and > buttons. Press the OK button to save the password.



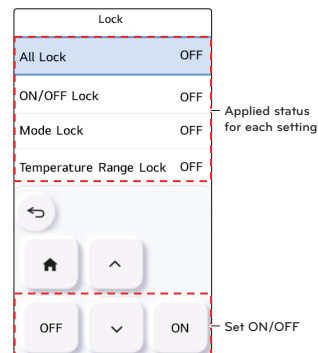
## Reboot

- You can reboot the system. Press the OK button in the popup to reboot the system.



## Lock Setting

- It is the function to lock the button operation of the remote controller so that children or other persons cannot use it without permission.
- It is the function to limit the desired temperature range that can be set in the wired remote controller.



Button	Description
	Activate the selected list
	Deactivate the selected list

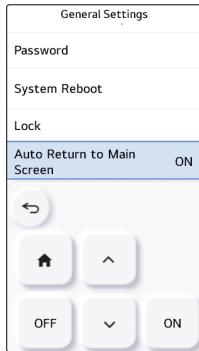
Lock	Description
All lock	It locks all button operation of the remote controller.
On/Off lock	It locks the On/Off button operation of the remote controller.
Mode lock	It locks the operation mode button operation of the remote controller.
Temperature range lock	It is the function that can limit the range of the desired temperature that can be set in the wired remote controller. - Single: Lower limit : 16~30 °C (60~86 °F) Upper limit : 16/18~30 °C (60/64~86 °F)

### NOTE

After setting the lock, when controlling the function, a popup about the function lock appears on the Home screen, allowing you to check the lock status.

### Auto Return to Main Screen

A function to set whether to auto return to the main screen when there is no touch input for a certain period.



### Display Opposite Mode

A function to set whether to display Mode selection as unavailable in accordance with the outdoor unit operation when the cooling/heating mode is selected in a product which does not support cooling/heating operation at the same time.

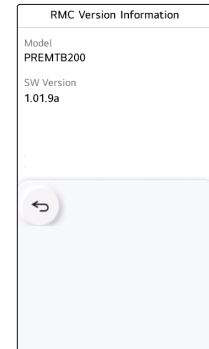
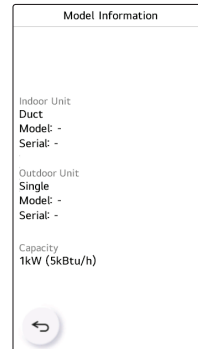
## Service

### Model Information

You can check the indoor and outdoor unit types and product capacity information.

### RMC Version Information

You can check the master/slave status of the installed product and its SW version.

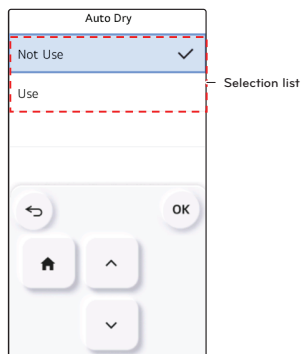


## Air Conditioner Settings

### Auto Dry Setting

Auto dry function is the function to remove mold and moisture by drying inside the indoor unit after the cooling operation and when the product is turned off.

- Select the time you want with the  $\nabla$  and  $\wedge$  buttons and then press the OK button to finish setting.



- General models

Value	Description
Use	Use auto dry function
Not Use	Not use auto dry function

### NOTE

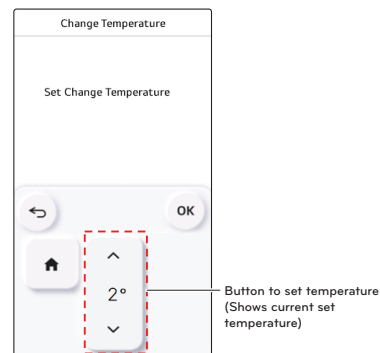
The Auto Dry setting function may not be available on some products.

- On some models with LEDs, the operating LED flashes periodically while auto drying. (Not a malfunction)
- When the product is shipped, the Auto Dry function is locked. Please set the Auto Dry function if necessary.
- For some products, the Auto Dry function may not work if cooling is ended within five minutes after starting operation.

### Change Temperature Setting

Change Temperature is the function to set the automatic Change Temperature between cooling and heating operation according to the temperature in AI operation mode.

- Select the temperature you want with the  $\nabla$  and  $\wedge$  buttons and then press the OK button to finish setting.



Value
1~7°C(Default : 2°C)

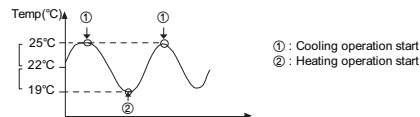
It is the function that can be used only in cooling/heating product.

### Example of using Change Temperature

Condition

- 1) Mode: AI mode
- 2) temperature: 22°C
- 3) Change Temperature: 3°C → Change Temperature 3°C difference

※ In case of the above conditions, it operates as in the graph.



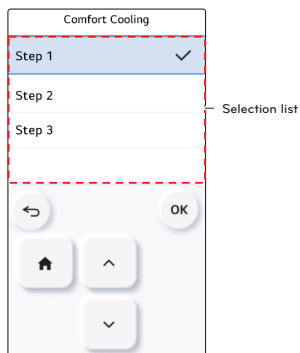
### NOTE

The Change Temperature setting function may not work in some products.

### Comfort Cooling Setting

It is the function to set the outdoor unit Comfort saving operation value.

- Select the step you want with the  $\nabla$  and  $\wedge$  buttons and then press the OK button to finish setting.



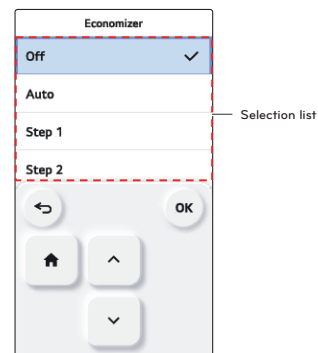
#### NOTE

The Comfort cooling function does not work in the group control.  
Comfort cooling setting function is only available in some products.

### Economizer Setting

Provides outside air to a room to save energy and improve the air quality indoors.

- Select the step you want with the  $\nabla$  and  $\wedge$  buttons and then press the OK button to finish setting.



Value	Description
Off	Disable the economizer function to keep the outside air damper closed.
Auto	If the outside air temperature is lower than the air temperature indoors when cooling is being operated, outside air is supplied to the room to save energy.
Step 1	Opens the outside air damper opening by one stage to improve the indoor air quality by introducing fresh air into the room.
Step 2	Opens the outside air damper opening by two stages to improve the indoor air quality by introducing fresh air into the room.

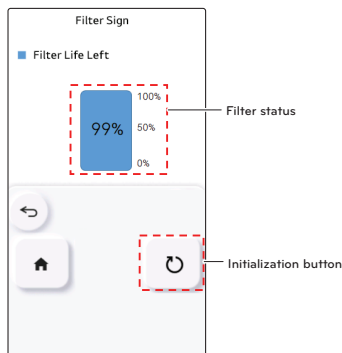
#### NOTE

Economizer setting function may not be available on some products.

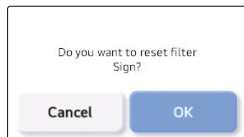
## Filter Sign Check and Initialization

When it becomes the time for the indoor unit filter cleaning, the filter cleaning message appears, and it is the function to remove the message.

- In the function setting list, select the Filter sign check and initialization category, and press [OK] button to display the detail screen.



Press the reset button to show the confirmation popup. Press the OK button to finish resetting the filter status.



Filter sign	Description
Good	Usage time is 70% or less
Normal	Usage time is 71 ~80%
Caution	Usage time is 81 ~99%
Bad	Usage time is 100%

- When it is time to clean the filter "Filter cleaning or replacement is required." message is displayed. Enter the Filter sign check and initialization detail screen.
- If the product has the function to display the time remaining until the filter cleaning, even if the filter cleaning message is not displayed, you can enter the Filter sign check and initialization.
- If there is a remaining time display function, when you enter the Filter sign detail screen, you can see the consumption and the remaining time.

### NOTE

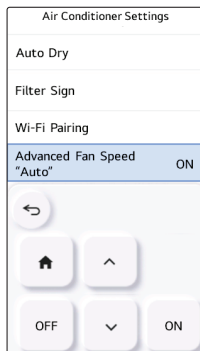
- Some products have a Filter Time Remaining function that can be accessed with Filter Sign check.
- Dirty filters will increase the cost to cool or heat the conditioned space.
- The filter check message is cleared after certain time without a separate clearing.

### Advanced Fan Speed Auto

It is the function to set the indoor unit's temperature based auto fan usage.

It is the function to automatically change the fan speed according to the difference between the indoor temperature and the desired temperature.

- Use the  $\nabla$  and  $\wedge$  buttons to select the setting, set it with the ON/OFF buttons, and press the OK button to finish setting it.



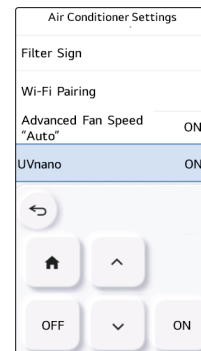
#### NOTE

Advanced fan speed "Auto" setting function is only available in some products.

### UVnano

The UVnano function uses UV LEDs to sterilize fans or filters at regular intervals.

- Select the list you want with the  $\nabla$  and  $\wedge$  buttons and then press the OK button to finish setting.



#### NOTE

- The configuration of the screen displayed may vary depending on the version of the remote control.
- UVnano is a compound word of "UV" and "nanometer".
- The UVnano function may not work on some products.
- If repair is required while using the UVnano function, the UV icon is displayed at the bottom of the Home screen. If the UV alarm is displayed, contact LG Electronics Service Center for repair.

### Wi-Fi Pairing Setting

It is the function to perform the pairing function of the Wi-Fi module connected to the indoor unit.



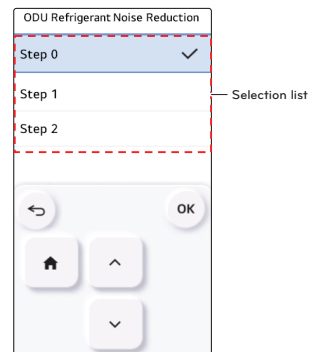
#### ! NOTE

The Wi-Fi setting function may not work in some products.

### ODU Refrigerant Noise Reduction Setting

It is the function to set the outdoor unit's refrigerant noise reduction function.

- Select the list you want with the V and ^ buttons and then press the OK button to finish setting.



#### ! NOTE

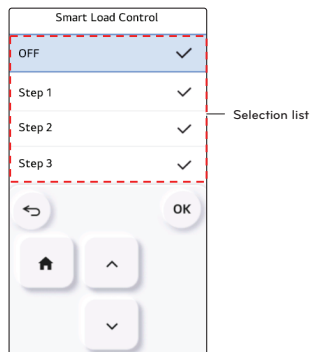
The ODU Refrigerant Noise Reduction function can be set only when the installer setting's outdoor unit function M/S setting is set to "Master".

ODU Refrigerant Noise Reduction function is only available in some products.

### Smart Load Control(SLC) Setting

Change the outdoor unit's Smart Load Control stage value.  
(Smart load control is the function to calculate the indoor air temperature, outdoor air temperature, and humidity to operate effectively.)

- Select the step you want with the  $\vee$  and  $\wedge$  buttons and then press the OK button to finish setting.



#### NOTE

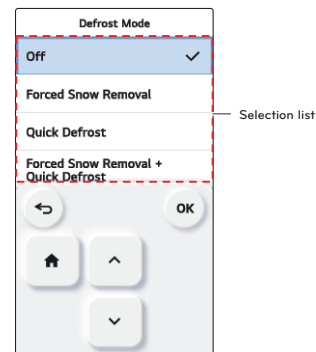
Smart load control function can be set only when the installer setting's outdoor unit function M/S setting is set to "Master".

Smart load control function is only available in some products.  
Step4 settings may not be available on some indoor unit products.

### Defrost Mode Setting

Change the outdoor unit's defrost mode operation.

- Select the list you want with the  $\vee$  and  $\wedge$  buttons and then press the OK button to finish setting.



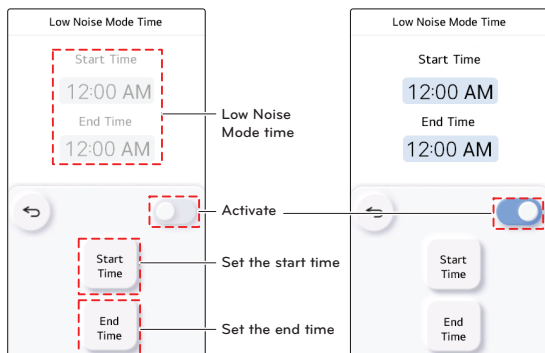
#### NOTE

The Defrost mode setting function can be set only when the installer setting's outdoor unit function M/S setting is set to "Master".

Defrost mode setting function is only available in some products.

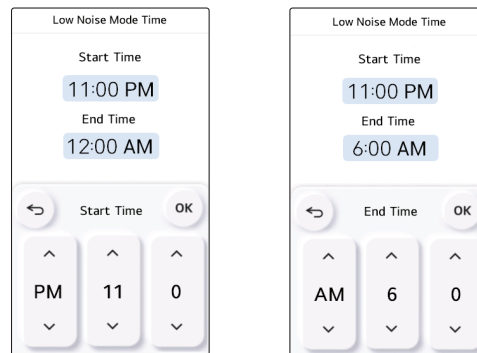
## Low Noise Mode Time Setting

It is the function to set the start and end time of the outdoor unit's low noise mode operation.



Button	Description
	Low Noise Mode Time activation button - Activate/Deactivate
	Set the start time - Move to the screen to set the start time.
	Set the end time - Move to the screen to set the end time.

- After setting the start time and end time, press the [OK] button to save it and move to the upper list.
- If the start time and the current time are the same, the outdoor unit Low Noise Mode starts and a message indicating that the outdoor unit in Low Noise Mode is displayed on the Monitoring screen.
- If the end time and current time are the same, the outdoor unit Low Noise Mode is canceled.



### NOTE

Low noise mode time setting function can be set only when the installer setting's outdoor unit function M/S setting is set to "Master".  
Low noise mode time setting function is only available in some products.

### CAUTION

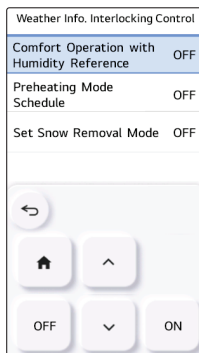
If the function is not used, please set it to Off.  
When you enter the low noise operation, the cooling capacity may be degraded.

## Weather Info. Interlocking Control

The Weather Info. Interlocking Control is a function that operates by referring to outdoor operation information.

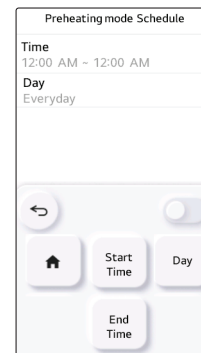
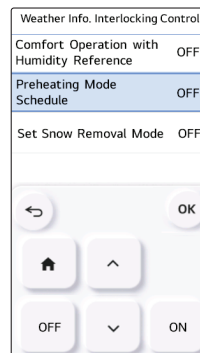
In the lower settings list, you can set the settings for comfort "Comfort operation with humidity reference", "Preheating mode Schedule", and "Set Snow Removal Mode".

- The Comfort Operation With Humidity Reference is a function that uses the outdoor humidity to actively save power for when the outdoor unit is running.



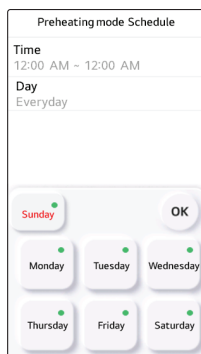
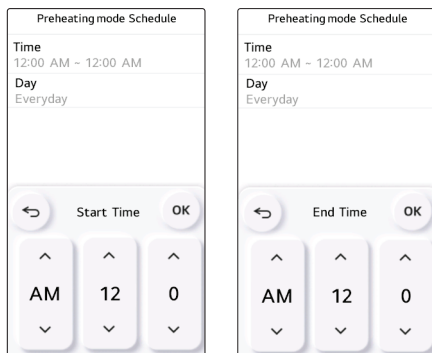
Value	Description
OFF	Don't use Comfort Operation With Humidity Reference
ON	Use Comfort Operation With Humidity Reference

- The Preheating Mode Schedule is a scheduling function that shortens the time to reach a comfortable temperature by warming up the indoor space before actual use.



Value	Description
OFF	Disable Preheating Mode Schedule
ON	Enable Preheating Mode Schedule

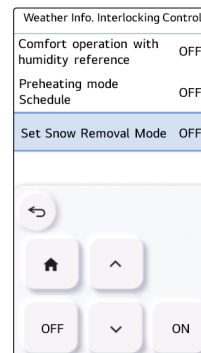
- Press the "OK" button to go to the screen where you can set the Preheating Mode Schedule. Set "Start Time", "End Time", and "Day" and press the "OK" button to complete the settings.



### NOTE

When the Preheating Mode Schedule is running, it is displayed in the monitoring information.

- The Set Snow Removal Mode setting is a function to set whether to operate the outdoor fan when it snows to remove the snow.

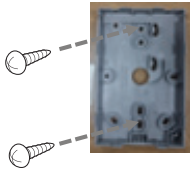


Value	Description
OFF	Don't use Set Snow Removal Mode
ON	Use Set Snow Removal Mode

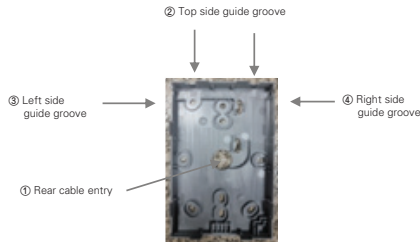
## INSTALLATION

### Installation of Remote Controller

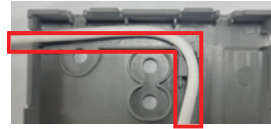
- After fixing the remote controller installation plate on the desired location, fix it firmly with the provided screws.
  - If the installation plate is not flat on the surface, it may result in the controller being twisted and cause a defect.
  - If there is a mounting box, install the remote controller installation plate using the fixings holes which suit, as in the below diagrams.
  - Do not leave a gap with the wall or product loose after the installation.



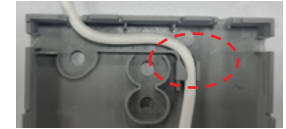
- The wired remote controller cable can be installed in 4 directions. Install to the suitable direction according to the installation environment.
  - Installation direction: Rear entry, top side, right side, left side.
  - When you install the remote controller cable at the top, right and left side, remove the remote controller cable guide hole before the installation.
    - Use a long nose pliers to remove the guide hole.
- After removing the hole, trim the cut surface neatly.



- When installing the remote control cable on the left side, be sure to install it in the following guide.
  - Make the cable to "ㄱ" shape as shown below.
  - Fit the bent "ㄱ" cable into the upper center piece of case.
  - Tighten the installation plate with preventing interference with the surrounding guide structure.



Reference. the bent cable shape



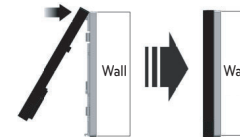
The Upper center boss for fixing the bent cable

#### NOTE

If the cable is assembled in a shape other than "ㄱ", it may not be fastened to the installation plate due to interference with the structure of case.

- After fixing the remote controller top side on the installation plate attached to the wall as in the following figure, press the bottom side to combine with the installation plate.
  - Do not leave a gap in the top, bottom, left, and right side of the remote controller and the installation plate after combining them.
  - Before combining with the installation plate, arrange the cables to avoid interference with the circuit parts.

#### <Order of Combining>

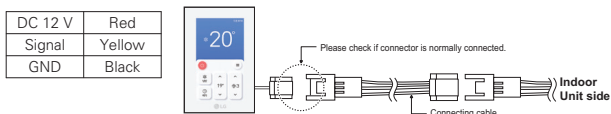


- When you remove the remote controller from the installation plate, insert a small flat head screwdriver into the bottom side separation hole and turn clockwise to separate the remote controller.
  - Be careful not to damage the internal parts during the removal.

#### <Order of Separation>



- Use the connection cables to connect the indoor unit with the remote controller.



- For the following cases, separately purchase and use the cables suitable for the situation.
  - Do not install the cable over 50 m. (It may cause communication issues.)
  - If the distance between the wired remote controller and the indoor unit is 10 m or more : 10 m extension cable (model name: PZCWRC1)
  - If you control several indoor unit products with one wired remote controller : Group control cable (model name: PZCWRCG3)

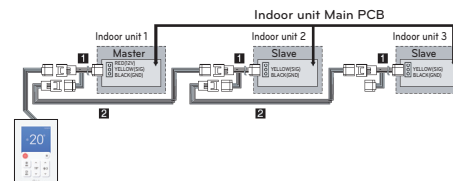
### NOTE

- Install the wired remote controller indoors away from direct sunlight.
- When installing using a remote control connection cable embedded in the wall, please check whether airflow is generated from the cable hole in the wall before installation. If there is airflow, block the cable hole to prevent the airflow inside the remote control from being affected. If the remote control is affected by airflow, it may not detect the space temperature accurately.
- Install the wired remote controller in a place that is NOT directly affected by outside air, away from doors or windows. (The current temperature may not be accurately displayed if it is affected by the temperature outside as doors and windows are opened and closed.)
- During the wired remote controller installation, do not bury it in the wall. (It may cause temperature sensor failure.)
- Do not install the cable over 50 m. (It may cause communication defect.)
- When you install the extension cable, carefully check the direction of the connectors on the remote controller side and the product side before the installation.
- Specification of extension cable: AWG 24, 3 conductor or above.

## Group control

- It connects and controls 2 or more air conditioner indoor units(Maximum number of IDU : 16ea) to one wired remote controller.

※ Connect using the group control cable.



- ① Group control cable (PZCWRCG3): Connect to indoor unit's wired remote controller connector
- ② Extension cable (PZCWRC1): Connect to No. ① cable and slave indoor unit's wired remote controller connector

While No. ① cable is connected, connect No. ② cable.

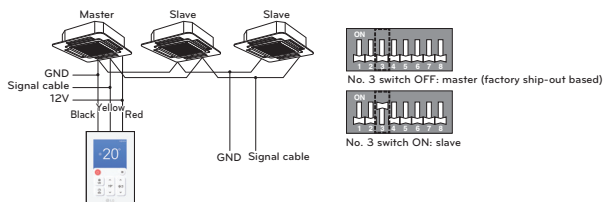


### NOTE

- Connect only GND and signal cable to the indoor unit set as slave. (If power cable is also connected, it may cause loss of communication)
- Inquiries related to the purchase of the cable shall be directed to the specialized company and the service center.

- Change master/slave of the indoor unit.

- For ceiling cassette and duct product group, change the setting with the indoor unit PCB switch.



- For the details on the wireless remote controller master/slave setting changes, refer to the wireless remote controller manual.

- After completing the master/slave setting in the indoor unit product, turn Off the power of the indoor unit product, and turn On the power after 1 minute.

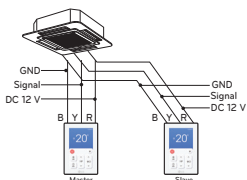
- You can use two wired remote controllers for one indoor unit.

- A dedicated cable must be used for the connection. If necessary, use an extension cable additionally and install. (2-Remo cable : PZCWRC2, Extension cable : PZCWRC1)

- For normal operation, one should be set as master and the other as slave. (Refer to the function "Installation setting - RMC master/slave")

- After completing the RMC master/slave setting, turn off the power of indoor unit, and turn on the power after 1 minutes.

- You cannot control the group as shown in the right for some products.



### NOTE

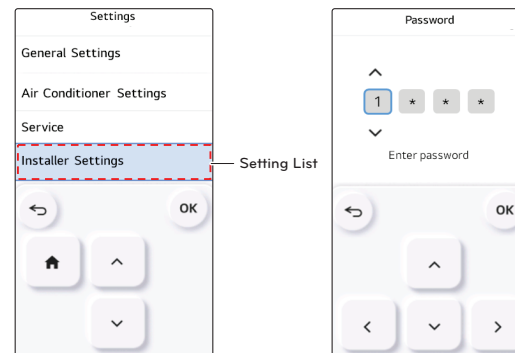
- During the group control, set only 1 indoor unit as master.
- During the group control, some functions other than the basic operation setting, fan speed Low/Med/High, remote controller lock setting, and time setting may be limited.
- During the individual control, if the master indoor unit DIP switch is set to slave, malfunction may occur.

## Installer Setting

### CAUTION

The installer setting mode is the mode to set the remote controller's detail function. If the installer setting mode is incorrectly set, it may cause product failure, user's injury, or property damage. It must be set by the installation specialist with the installation license, and if it is installed or changed without installation license, all problems caused will be the responsibility of the installer, and may void the LG warranty.

- Select the list you want with the  $\vee$  and  $\wedge$  buttons and then press the OK button to move to the screen for the selected list.



※ Installer setting password

Home → Menu → Settings → Service → RMC Version Information

**Example)** SW version : 1.00.1 a

In the above case, the password is 1001.

### NOTE

Some categories of the installer setting menu may not be available depending on the product function or the menu name may be different.

- You can set the product user functions.
- Some functions may not be displayed/operated in some product types.

Menu	Description
Test run setting	It is the function to set the trial operation at the initial product installation.
Central control address Setting	It is the function to set the central control address of the indoor unit during the central controller connection.
ESP setting	It is the function to set the ESP for each fan speed for easy installation
Temperature sensor setting	It is the function to select the temperature sensor that will decide the indoor temperature.
Static pressure setting	The fixed pressure setting can be set only in the duct products. It cannot be set in other products.
Remote Controller Master/Slave Setting	It is the function to set group control or 2-remote controller control.
Override master/slave setting	The operation master / slave selection function is to avoid other mode operations, and it is the function to prevent the selection of the opposite mode of the indoor unit set as master by the indoor units set as slaves.
Dry contact mode setting	Dry contact function is the function that can be used only when the dry contact devices is separately purchased and installed.
Fixed air volume	It is the function to apply different fan speeds automatically for each thermal control status.
Over Heating	Provides an adjustable deadband around the heating setpoint through selectable heating thermal on/off values.
Emergency Heater setting	It is the function to set whether to use emergency heater control function and the usage environment.
Func. control during grp. Control setting	It is the function to set common functions or some functions to be controlled by the master indoor unit standard during the group control.
External Device of Indoor Unit Setting	It is the function to set whether to mount option unit (Air purify / Humidification / Heater / Ventilation / Elevation grill / Aux Heater / Refrigerant leakage detection sensor) when it is additionally installed or removed after the mass production.
Indoor unit address verification	This function allows you to check the address of the indoor unit designated by the outdoor unit.
Static pressure step setting	This is the function that static pressure of the product is divided in 11 steps for setting.

Menu	Description
Over Cooling	Provides an adjustable deadband around the cooling setpoint through selectable cooling thermal on/off values
Fan speed in Cooling thermal off	It is a function that sets the indoor unit fan movement, in cooling mode, when thermal is off.
Primary heater setting	It is the function to set the heater usage to have higher priority over the outdoor unit cycle during the indoor unit heating operation.
Indoor unit Auto-Start setting	It is a function that sets whether to restore the indoor unit operation by resuming the previous power-on state or as power-off state in the power failure compensation.
CN_CC setting	It is the function to set whether to install (use) Dry Contact. (It is not a function for Dry Contact installation, but it is a function to set the usage of the indoor unit's CN_CC port.)
CN_EXT setting	It is the function to set the indoor unit's Dry Contact Port to control external input and output according to DI/DO set by the customer. (It is the function to decide the usage of the contact point port (CN_EXT) mounted in the indoor unit PCB.)
Fan continuous operation setting	It is the function to set the indoor unit's continued Fan function usage. It is the function to maximize the cooling/heating efficiency by the outdoor unit operating the indoor unit fan operation longer than the previous operation method.
Humidity sensing position	It is the function to set the location to detect humidity.
Outdoor temp. for heating stages	This function can select outdoor temperature values for use reference point of heater and heating mode operation.
CN_PTC setting	This is a function to set PTC Port of indoor unit.
Password initialization	It is the function to initialize (0000) the password when you forgot the password set in the remote controller.
Auto ESP	This function automatically sets the rotation speed of the fans corresponding to each step of rated airflow for easy installation.
UVnano / Filter Box	It is the function to set whether to mount option unit (UVNano/Filter box) when it is additionally installed or removed after the mass production
Fan Operation During Auxiliary Heater Only	This is a function to set the indoor unit fan to be used even when the Auxiliary heater is operating alone.

Menu	Description
ODU Function Master	It is the function to set the outdoor unit's function Master / Slave.
Low Noise Mode Priority setting	It is the function to set the main agent of the low noise mode control. (It is the function to set only one of the outdoor unit / remote controller can control the low noise operation.)
ODU Cycle priority	This function can select standby mode or priority cooling.
Noise Target Control	The Noise Target Control function is a function that limits the noise caused by the outdoor unit running.

### Test Run Setting

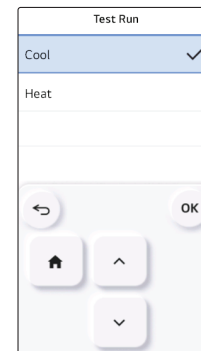
After product installation, the Test run must be performed. For Test run related details, refer to the product manual.

- In the installer setting list, select the Test run setting category, and press [OK] button to move to the detail screen.

- You can select 'cooling Test run / heating Test run'

- During the Test run, if you start the following functions, the Test run stops.

\* Operation mode, desired temperature, fan speed, wind direction, start/stop



## Central Control Address Setting

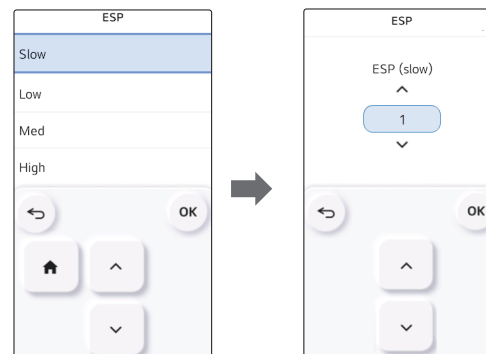
It is the function to set the central control address of the indoor unit to allow communication with a central controller,

- In the installer setting list, select the central control address setting category, and press [OK] button to move to the detail screen.
  - Select a hex value between 00 and FF.
    - Value 1: group address setting / value 2: indoor unit address setting



## ESP Setting

It is the function to set the fan speed value corresponding to each fan speed for easy installation.



### NOTE

If ESP is incorrectly set, the air conditioner may malfunction.  
This function must be set by the installation specialist that holds an installation license.  
For ventilation products, separate ESP values are used for the supply and exhaust fans.

- In the installer setting list, select the ESP setting category, and press [OK] button to move to the detail screen.

Product	ESP fan speed	value
Air conditioner	Slow	0 ~ 255
	Low	
	Med	
	High	
	Power	

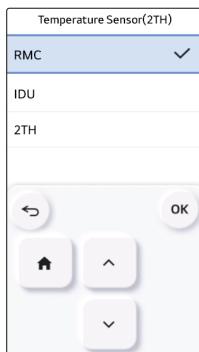
### NOTE

Be especially careful not to switch ESP values corresponding to each fan speed.  
Engineering manuals have ESP setting tables that reference air flow and corresponding value setting to achieve the flow.  
The ESP values that can be set may be different for each product and capacity.

## Temperature Sensor(2TH) Setting

It is the function to select the temperature sensor to decide the indoor temperature.

- You can set the following setting values using [  $\wedge$  /  $\vee$  ] button.



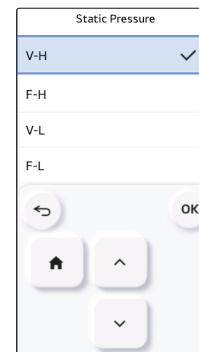
Temperature sensor location		Description
Remote Controller (RMC)		Operate the system with wired remote controller's temperature sensor
Indoor Unit (IDU)		Operate the system with indoor unit's temperature sensor
2TH	Cool	Compare the temperatures of the indoor unit and the wired remote controller and operate with the higher temperature (There are system operated with lower temperature)
	Heat	Compare the temperatures of the indoor unit and the wired remote controller and operate with the lower temperature

- 2TH function's operation characteristics may be different for each product.

## Static Pressure Setting

Static pressure setting can be set only in the duct products. (It cannot be set in other products.)

- You can set the following setting values using [  $\wedge$  /  $\vee$  ] button.



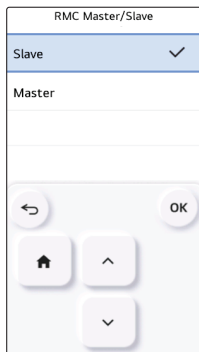
Static pressure		Description	
		Variable / Fixed	ESP default value
Variable high static pressure	V-H	Variable	High static pressure(High)
Fixed high static pressure	F-H	Fixed	High static pressure(High)
Variable low static pressure	V-L	Variable	Low static pressure(Low)
Fixed low static pressure	F-L	Fixed	Low static pressure(Low)

- 2TH function's operation characteristics may be different for each product.

### Remote Controller Master/Slave Setting

This function sets configuration for the master/slave setting through the remote controller.

- Change setting values using [Λ / ∇] button.



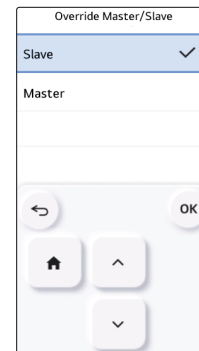
M/S	Description
Master (default)	Using group control, the indoor units are operated based on the remote controller.
Slave	Using group control, all remote controllers except 1 master remote controller are set as slaves.

- 2TH function's operation characteristics may be different for each product.

### Override Master/Slave Setting

The operation master / slave selection function is to avoid other mode operations, and it is the function to prevent the selection of opposite mode of the indoor unit master by the indoor units set as slaves.

- Change setting values using [Λ / ∇] button.



M/S	Description
Master	Using group control, this master sets the mode of slave IDU's.
Slave	For the indoor unit set as slave, it can only select some operation mode of the master indoor unit cycle. Ex) Master is in cooling cycle, Slave can select cooling, dehumidification, auto, and wind only Master is in heating cycle, Slave can select auto, heating, and wind only

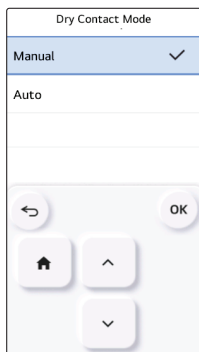
#### NOTE

Override M/S setting function is only available in some products.

## Dry Contact Mode Setting

Dry contact function is the function that can be used only when the dry contact devices is separately purchased and installed.

- Change setting values using [  $\wedge$  /  $\vee$  ] button.



Value
Auto
manual

### ! NOTE

For dry contact mode related detail functions, refer to the individual dry contact manual.  
What is dry contact?

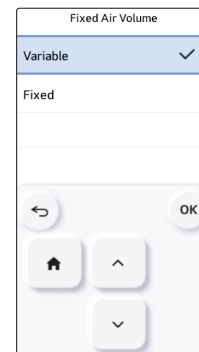
It means the contact point signal input when the hotel card key, human body detection sensor, etc. are interfacing with the air conditioner.

Added system functionality by using external inputs (dry contacts and Voltage contacts).

## Fixed Air Volume

It is the function to apply different fan speeds automatically for each thermal control status.

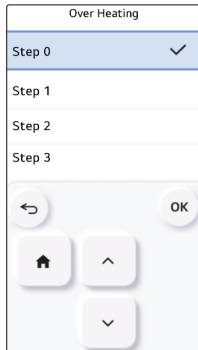
- You can set the following setting values using [  $\wedge$  /  $\vee$  ] button.



Value	Comp on	Comp off
Variable	Set fan speed	Low
Fixed	Set fan speed	Set fan speed

## Over Heating

Provides an adjustable deadband around the heating setpoint through selectable heating thermal on/off values.

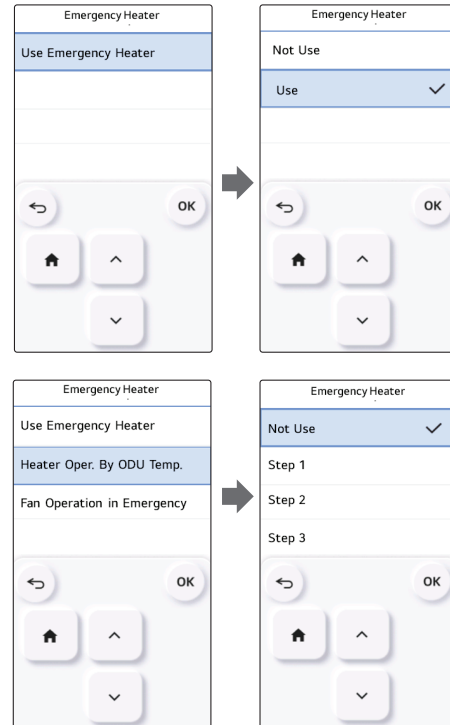


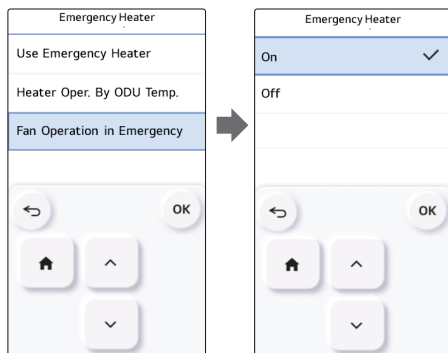
Value
Step0 : Default value
Step1 : 4°C / 6°C
Step2 : 2°C / 4°C
Step3 : -1°C / 1°C
Step4 : -0.5°C / 0.5°C

## Emergency Heater Setting

Enable the emergency heater control function and the usage environment.

- In the installer setting list, select the emergency heater setting category, and press [OK] button to move to the detail screen.
  - In case of an error, it sets whether the emergency heater can be used / outdoor temperature standard heater operation usage setting and temperature step value setting / and during the emergency heater operation, whether to use the indoor unit fan operation.





Value	Outdoor temperature standard heater operation		Fan operation in emergency control
Not use	-		-
Use	Emergency heater	Step 0 ~ 3	On/Off
	Extended emergency heater	Step 0 ~ 15	

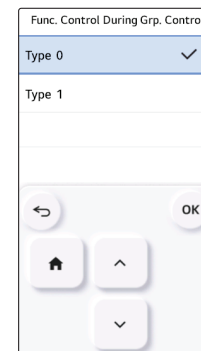
### ! NOTE

This function setting must be carried out by a certified-technician.

### Function Control During Group Control Setting

This function enables the control of the common functions or some functions based on the master indoor unit during the group control.

- Change setting values using [Λ / ∨] button.



Value	Description
TYPE0 (Not use)	Common function,
TYPE1 (Use)	Use expanded function which is based on master indoor unit

### ! NOTE

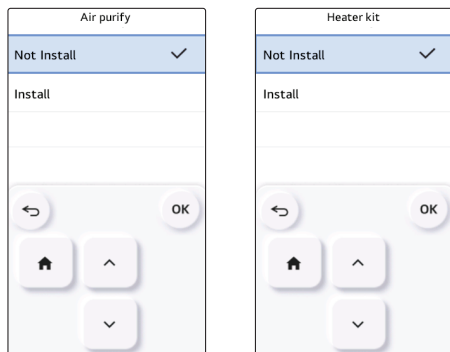
Common functions and some indoor unit master standard setting shall be set only during the group control with the same type indoor units.

During the group control with different indoor unit types, set it as 'Type 0' to use the existing group control method.

### External Device of Indoor Unit Setting

It is the function to set whether to mount option unit (Air purify / Humidification / Heater / Ventilation / Elevation grill / Aux Heater / Refrigerant leakage detection sensor) when it is additionally installed or removed after the mass production.

- You can set the following setting values using [ ^ / v ] button.

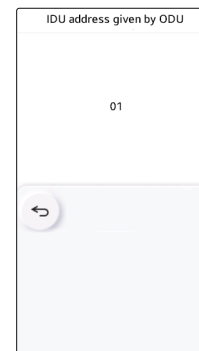


Function	Value
Air purify	Not install / Install
Heater	
Ventilation Kit	
Refrigerant leakage detection sensor	
Aux Heater	Step 0 / Step 1 / Step 2

### Indoor Unit Address Verification

This function allows you to check the address of the indoor unit designated by the outdoor unit.

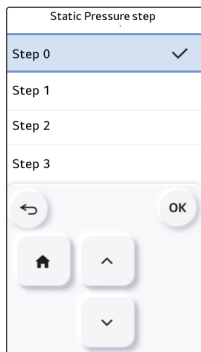
- In the installer setting list, select the indoor unit address check category, and press [OK] button to move to the detail screen.



### Static Pressure Step Setting

It is the function to subdivide and set the product's Static pressure to 11 stages.

- Change setting values using [ $\wedge$  /  $\vee$ ] button.



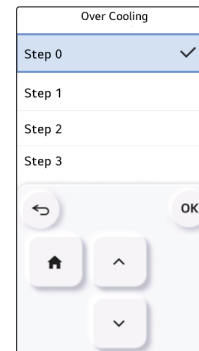
Value
Step 0 ~ Step 11

#### ! NOTE

If Static pressure step setting is used, the Static pressure setting is not used.  
For the Static pressure step value for each stage, refer to the indoor unit product manual

### Over Cooling

Provides an adjustable deadband around the cooling setpoint through selectable cooling thermal on/off values.

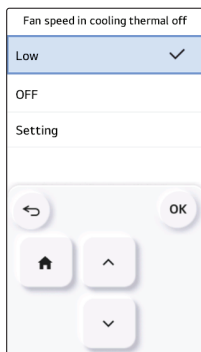


Value
Step0 : 0.5°C / -0.5°C
Step1 : 6°C / 4°C
Step2 : 4°C / 2°C
Step3 : 1°C / -1°C

### Fan Speed in Cooling Thermal Off

Indoor unit fan, in cooling mode, during thermal off condition.

- Select value using [ $\wedge$  /  $\vee$ ] button.

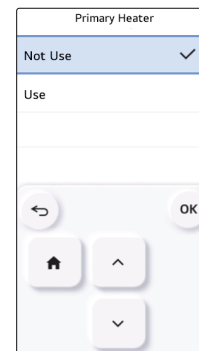


Value	
Low	Fan speed low
Off	Fan off
Setting	Fan speed setting value

### Primary Heater Setting

It is the function to set the heater usage to have higher priority over the outdoor unit cycle during the indoor unit heating operation.

- You can set the following setting values using [ $\wedge$  /  $\vee$ ] button.

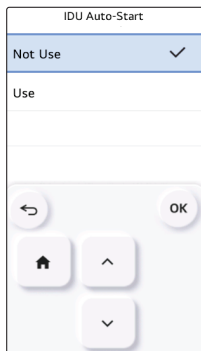


Value	Description
Not use	During the heating, heater is set to be used as secondary
Use	During the heating, heater is set to be used as main

### Indoor Unit Auto-Start Setting

It is a function that sets whether to restore the indoor unit operation by resuming the previous power-on state or as power-off state in the power failure compensation.

- You can set the following setting values using [ / ∨ ] button.

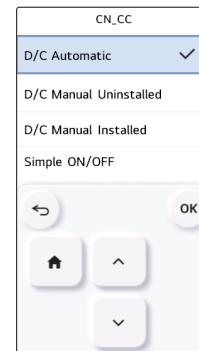


Value	Description
Use	Use indoor unit auto restart
Not use	Not use indoor unit auto restart

### CN\_CC Setting

It is the function to set the usage of the indoor unit's CN\_CC port.

- Select CN\_CC setting category, and press [OK] button to move to the detail screen.



Value	Description
DC auto install (default)	When power is applied to the product, indoor unit when the contact point is on in Dry Contact installed state recognizes Dry Contact installation
DC manual not install	Do not use (install) Dry Contact
DC manual install	Use (install) Dry Contact
Programmable DI/DO	Use as Programmable DI/DO (Simple On/Off)

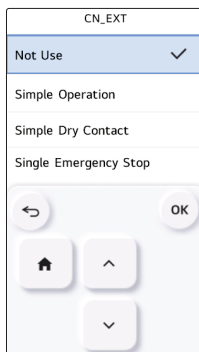
#### ! NOTE

CN\_CC is the device connected to the indoor unit to recognize and control the external contact point.

## CN\_EXT Setting

It is the function to set to control the external input and output according to DI/DO set by the customer using the indoor unit's Dry Contact Port. (It is the function to decide the usage of the contact point port (CN\_EXT) mounted in the indoor unit PCB.)

- In the installer setting list, select CN\_EXT setting category, and press [OK] button to move to the detail screen.

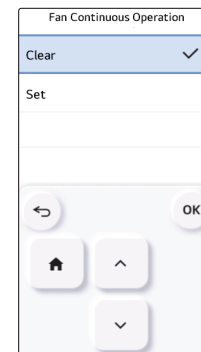


Value	Description
Not use (default)	Use installer code No. 41 setting value (simple Dry Contact setting value)
Simple operation control	Simple operation On/Off
Simple Dry Contact	Dry Contact (Simple Contact)
Single emergency stop	Indoor unit single emergency stop
Occupied / Unoccupied	Occupied / Unoccupied
Window Contact	Window contact ※ It can be set only when there is window contact function.
Window Contact Lock	Window contact with lock ※ It can be set only when there is window contact lock function.

## Fan Continuous Operation Setting

It is the function to set the indoor unit's continued fan function usage. (It is the function to maximize the cooling/heating efficiency by the outdoor unit operating the indoor unit fan operation longer than the previous operation method.)

- You can set the following setting values using [Λ / V] button.

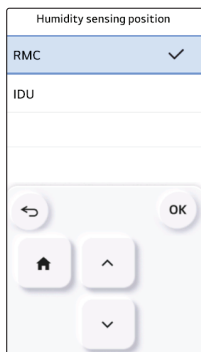


Value	Description
Clear	Do not use continued fan usage
Set	Use continued fan usage

## Humidity Sensing Position

It is the function to set the location to detect humidity.

- You can use [Λ / ∨] button to set the following setting values.

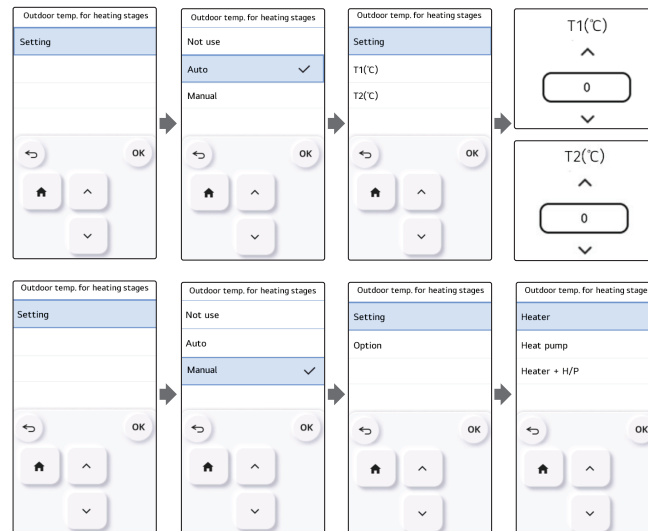


Value	Description
Remote Controller (RMC) (Default)	Humidity sensor of the remote controller itself
Indoor Unit (IDU)	Humidity received from indoor unit

## Outdoor Temp. for Heating Stages

It is a function that sets outdoor temperature values for two stage heating.

if user set outdoor temperature T1 and T2, Indoor unit will select heating stage between Indoor unit operation and heater operation.

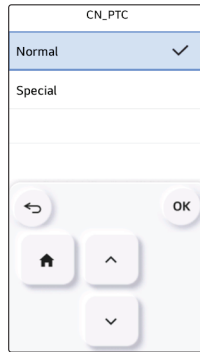


SW Version	Setting value	Option	T1 value	T2 value
~2.08.2a	Not Use	-	-	-
	Use	-	-23 ~ 16 °C (-10 ~ 60 °F)	-23 ~ 51 °C (-10 ~ 130 °F)
2.09.0a~	Not Use	-	-	-
	Auto	-	-23 ~ 16 °C (-10 ~ 60 °F)	-23 ~ 51 °C (-10 ~ 130 °F)
	Manual	Heat pump Heater Heater + H/P	-	-

※ Even if the remote control version is 2.09.0a or more, Features may not be supported.

## CN\_PTC Setting

This is a function to set PTC Port of indoor unit.

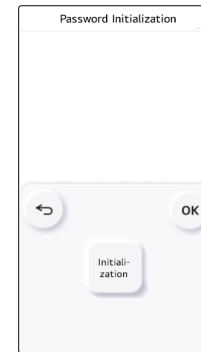


Setting value	Description
Normal	Auxiliary heating interlock deactivated
Special	Auxiliary heating interlock activated

## Password Initialization

It is the function to initialize (0000) when you forgot the password set in the remote controller.

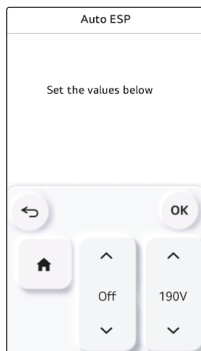
- In the installer setting list, select the password initialization setting category, and press [OK] button to move to the detail screen.
- When you press "initialization" button, a popup screen appears, and when you press "check" button, password initialization starts, and the user password is changed to 0000.



## Auto ESP

This function automatically sets the rotation speed of the fans corresponding to each step of rated airflow for easy installation.

- Select Auto ESP and press the [OK] button to move to the detail screen.

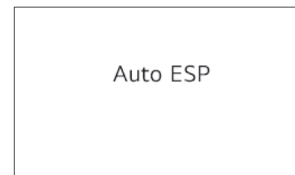


After selecting the voltage setting, the product will automatically operate and automatically set the rotation speed for each fan speed - High, Medium, and Low.

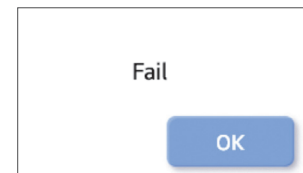
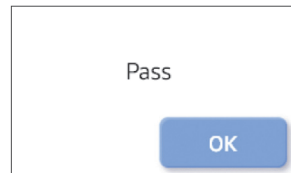
Check the product type and select "Auto" for a Single product and "Manual" for a Multi V product.

Value	Description
Off	Not in use
Auto	Automatically selects the voltage
Manual	Selects the voltage (190V-270V) * Only for Multi V products

While setting, a pop-up is displayed. This means that Auto ESP is being set. (It takes approximately 3 to 8 minutes.)



Product operation is terminated once the rotation speed setting is complete. You can check the results as Pass or Fail.



If it fails, you cannot use the Auto ESP function.

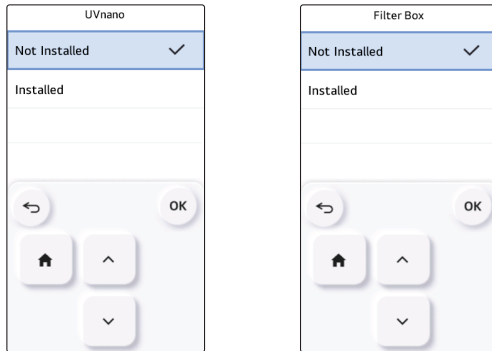
Instead of Auto ESP, the conventional ESP setting method can be used.

### ! NOTE

If Auto ESP is incorrectly set, the air conditioner may malfunction.  
This function must be set by an installation specialist with an installation license.

### UVnano / Filter Box

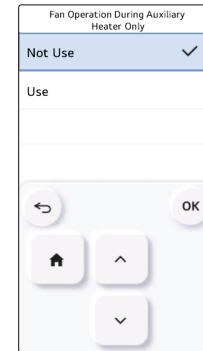
It is the function to set whether to mount option unit (UVnano/Filter box) when it is additionally installed or removed after the mass production



Function	Value
UVnano	Not Installed / Installed
Filter Box	

### Fan Operation During Auxiliary Heater Only

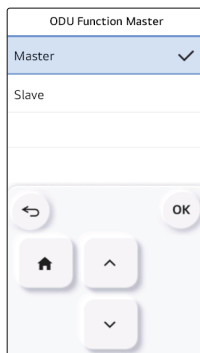
This is a function to set the indoor unit fan to be used even when the Auxiliary heater is operating alone.



Value	
Not use	Use

## ODU Function Master

It is the function to set the outdoor unit's function Master / Slave.



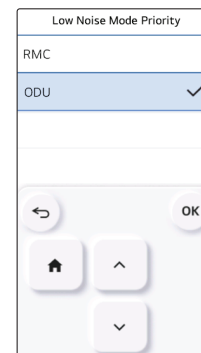
Value	Description
Slave	Cannot enter the Smart load control function setting. Cannot enter the low noise operation time setting. Cannot enter the refrigerant noise reduction setting. Cannot enter the defrost mode setting. Cannot enter the Low Noise Mode Priority Setting
Master	Smart load control function setting is possible. Low noise operation time setting is possible. Refrigerant noise reduction setting is possible. Low Noise Mode Priority Setting is possible. Defrost mode setting is possible.

## ! CAUTION

When you change the outdoor unit function master setting from master to slave, check the operation status of the outdoor unit function (outdoor unit low noise operation, smart load control) and make sure to stop the outdoor unit function before the change.

## Low Noise Mode Priority Setting

It is the function to set the low noise mode control main agent. (It is the function to set that only one of the outdoor unit / remote controller can control the low noise operation.)



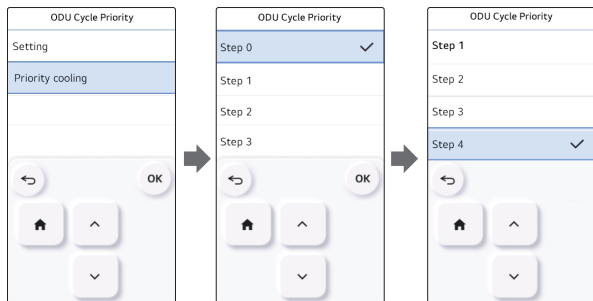
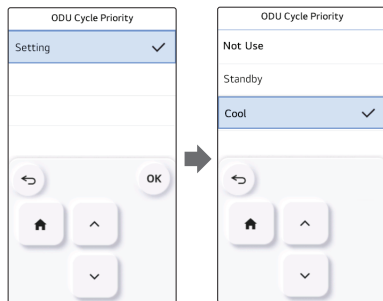
Value	Description
RMC	Ignore the outdoor unit PCB's low noise operation Switch Setting value - Function setting : Remote controller low noise operation time menu deactivation
ODU(default)	It is controlled in the outdoor unit itself according to the outdoor unit PCB's low noise operation Switch Setting value - Function setting : Remote controller low noise operation time menu deactivation

## ODU Cycle priority

This function can set cycle priority of outdoor unit.

Multi V Heat Pump system does not support mixed mode therefore wired remote controller can not show opposite operation mode for select option while ODU operate cooling or heating cycle.

Set this function user can select opposite operation mode with wired remote controller and indoor units enter to 'standby' status or outdoor unit can support cooling first and operate heating with heater.



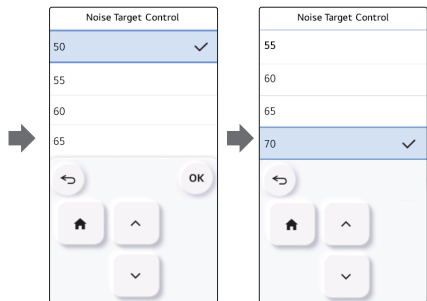
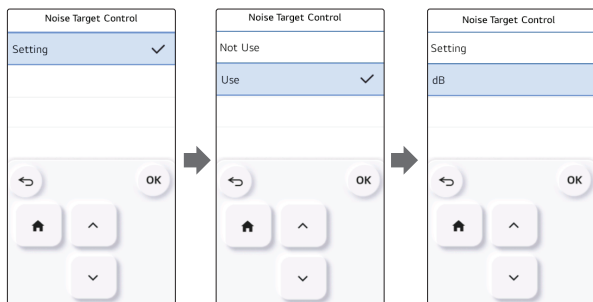
Option	Description
Not use	Does not support opposite cycle operation using wired remote controller - When ODU operate as cooling cycle selectable operation modes with wired remote controller are cool, auto, dehumidification and fan. - When ODU operate as heating cycle selectable operation modes with wired remote controller are heat, auto and fan.
Standby	When user set opposite operation mode using wired remote controller indoor unit stop thermal operation and fan.
Cool	Cooling cycle has a priority. When user change operation mode of specific indoor unit to cooling on heating cycle, outdoor unit change cycle to cooling and Indoor unit keep heating operation using heater. * Please set emergency heater and aux heater function before using this option.

※ When user select cooling option, additional setting menu will be activated.  
The additional timer setting menu is for setting minimum cooling operation period.  
Once outdoor unit change

Setting Value	Cooling operation time
Step 0	45 min.(Default)
Step 1	30 min.
Step 2	60 min.
Step 3	90 min.
Step 4	120 min.
Step 5	Not Applied

## Noise Target Control

- Set whether to use the Noise Target Control function and the noise limit.
- After setting, press the [OK] button to save the set value.
- If you press the [Back] button without pressing the [OK] button, the set value is not saved and it moves to the list screen.



Value	Noise limit (dB)				
Not use	-				
Use	50	55	60	65	70

### ! NOTE

- The Noise Target Control function limits the product's capabilities to prioritize noise while running.
- Pay special attention to the settings as a weakening of cooling or heating may occur.
- The range of noise limits may vary depending on the version of the remote control and the connected product.

## GUIDE TO DIFFERENT MODE OPERATION/OPEN SOURCE SOFTWARE

### Different mode operation

Different mode operation is the case when the indoor units' operation modes are different when multiple indoor units are installed to one outdoor unit. (Different mode operation doesn't happen in the cooling exclusive model.)

- Example of different mode operation
  - When one indoor unit is operated in heat while several indoor units one outdoor unit are operated in cooling, the heating operation is not performed.
  - With one outdoor unit, while several indoor units are in heat mode, if one indoor unit requests in cooling or dehumidification, the operation is not performed.

## OPEN SOURCE SOFTWARE NOTICE INFORMATION

To obtain the source code under GPL, LGPL, MPL, and other open source licenses, that is contained in this product, please visit <http://opensource.lge.com>. In addition to the source code, all referred license terms, warranty disclaimers and copyright notices are available for download. LG Electronics will also provide open source code to you on CD-ROM for a charge covering the cost of performing such distribution (such as the cost of media, shipping, and handling) upon email request to [opensource@lge.com](mailto:opensource@lge.com). This offer is valid for a period of three years after our last shipment of this product. This offer is valid to anyone in receipt of this information.