

# LED LCD- (LED- \*)

\* LED- LG — - .

LED LCD (LED )

- 22MP68VQ
- 23MP68VQ
- 24MP68VQ
- 27MP68VQ



----- 3

---- 4

- ----- 4

-

----- 5

- ----- 6

- --- 8

- ----- 9

**-14**

- PC----- 14

- AV- ----- 15

- 16

**—17**

- ----- 18

-  
-  
-  
-  
-

**—25**

**—27**

- ( )----- 31

- ----- 31

[www.lg.com](http://www.lg.com).



Термины HDMI и HDMI High-Definition Multimedia Interface и Логотип HDMI являются товарными знаками или зарегистрированными товарными знаками HDMI Licensing Administrator, Inc. в Соединенных Штатах и других странах.

\*

ErP:

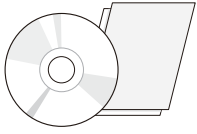
4

\*

Automatic Standby (

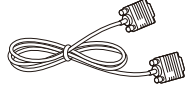
« .»

)”.



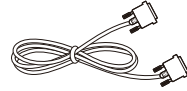
CD- /

\_\_\_\_\_



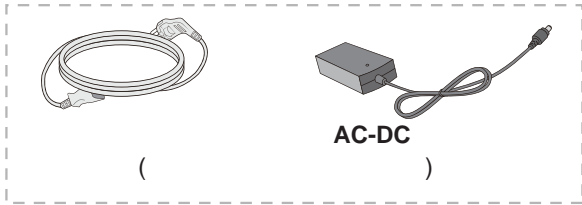
D-SUB

( \_\_\_\_\_ )



DVI-D

( \_\_\_\_\_ )



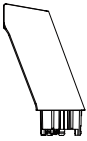
AC-DC

( \_\_\_\_\_ )



AC-DC

( \_\_\_\_\_ )



\_\_\_\_\_



\_\_\_\_\_



\_\_\_\_\_



HDMI

( \_\_\_\_\_ )



y

y

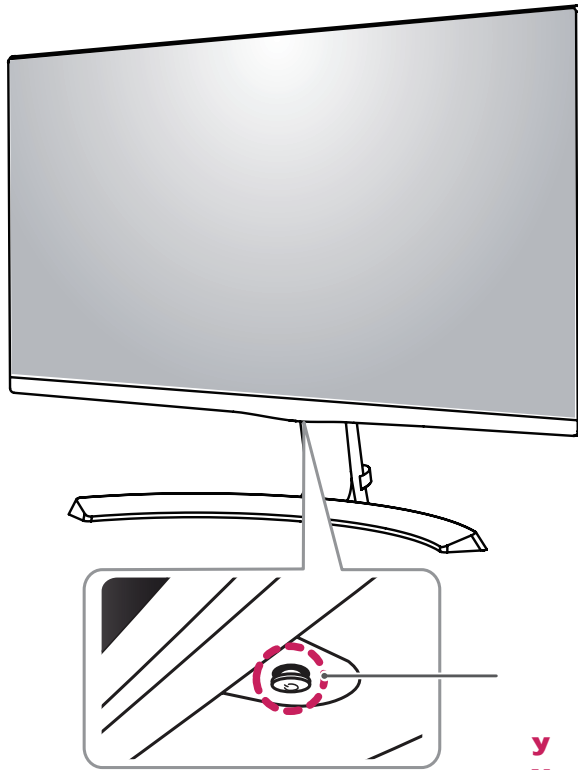



y

y

- LGE ([www.lg.com](http://www.lg.com)).

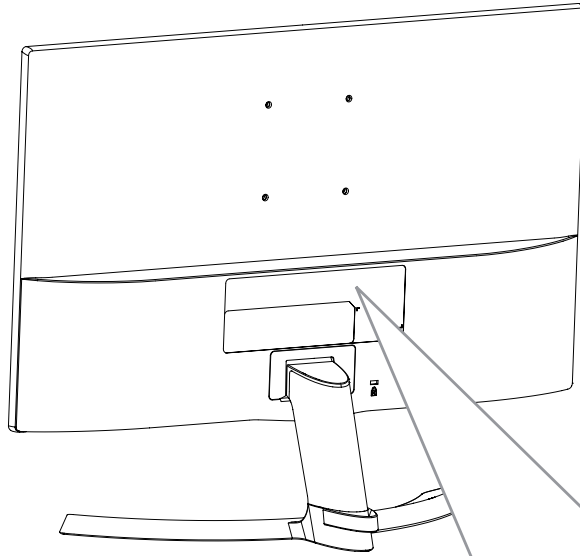
		22MP68VQ , 23MP68VQ 24MP68VQ , 27MP68VQ
		O
<b>OnScreen Control</b>		O



			
			
	/	/	/



y

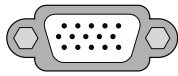


22MP68VQ 23MP68VQ 24MP68VQ

电源输入



DC-IN  
(19 V  $\text{---}$ )



D-SUB IN



H/P 



DVI-D IN

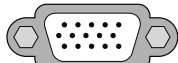


HDMI IN

27MP68VQ



DC-IN  
(19 V  $\text{---}$ )  
电源输入



D-SUB IN



H/P 



DVI-D IN



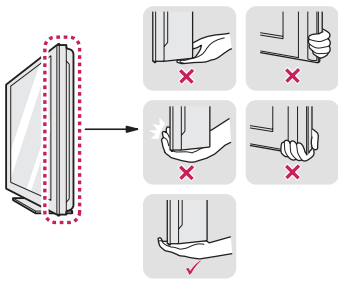
HDMI IN



y

y

y



y



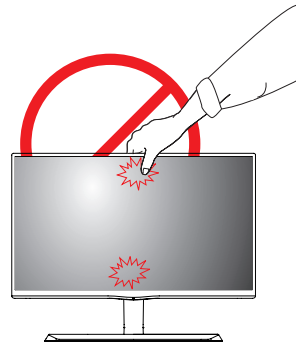
y

y

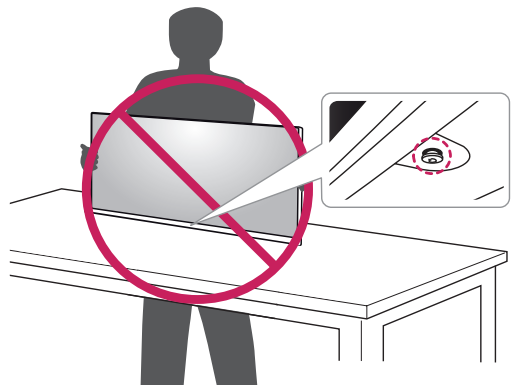


y

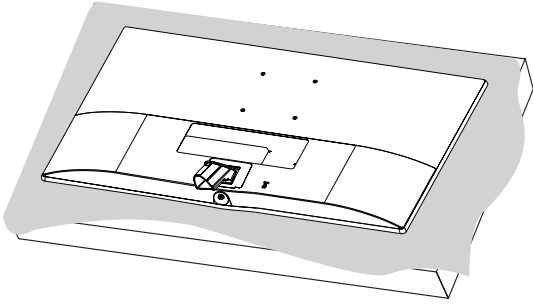
!



y

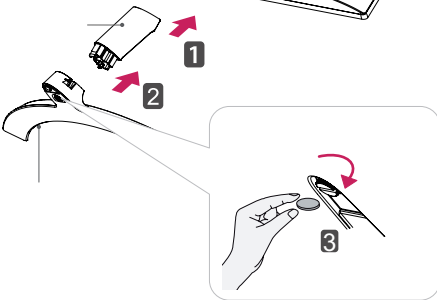
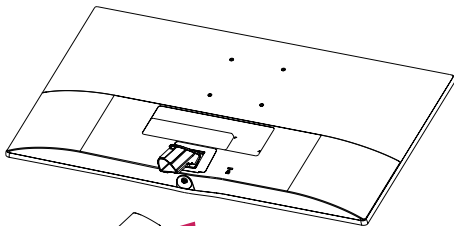


1

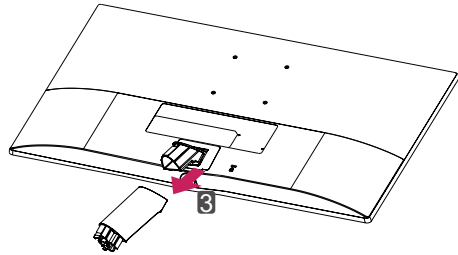
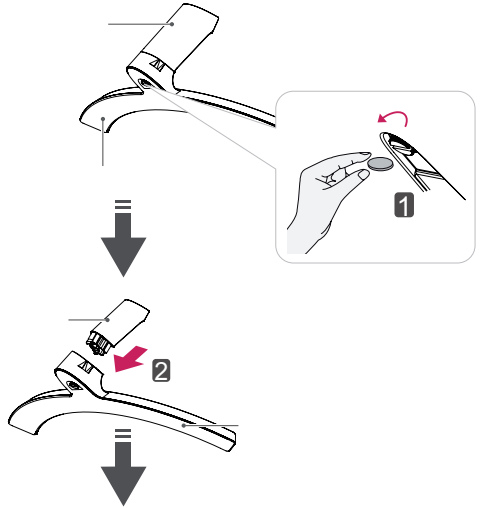


!

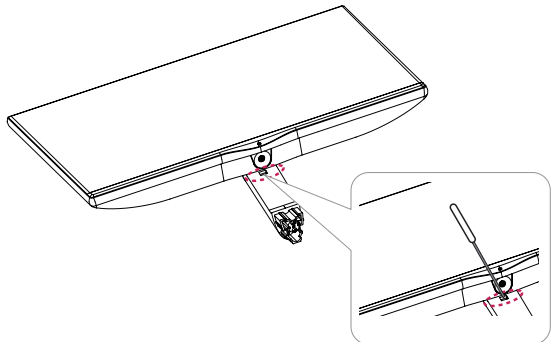
y



1



\*





!

y

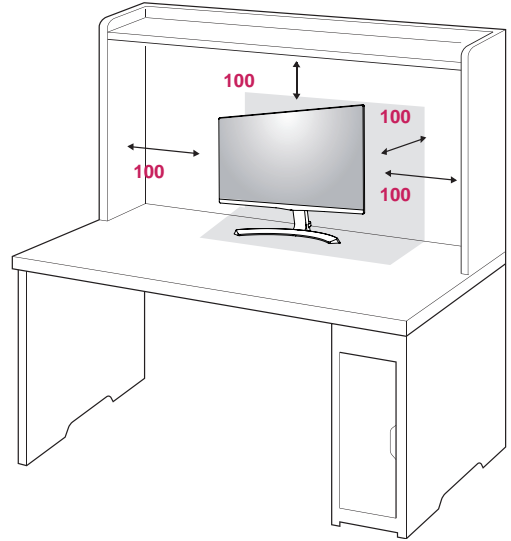
y

y

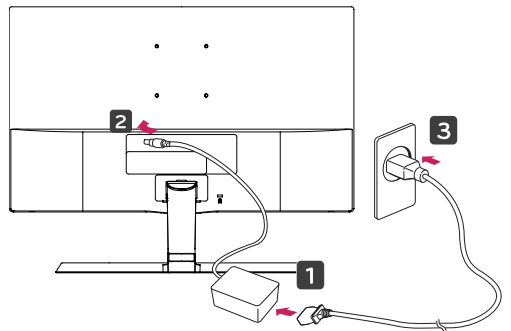
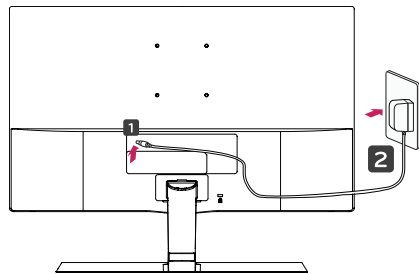
y

1

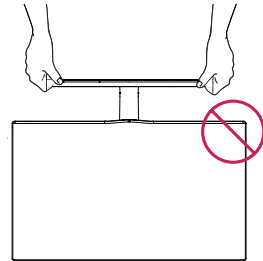
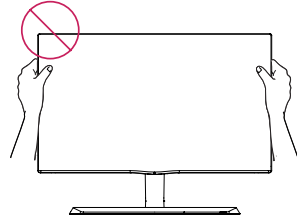
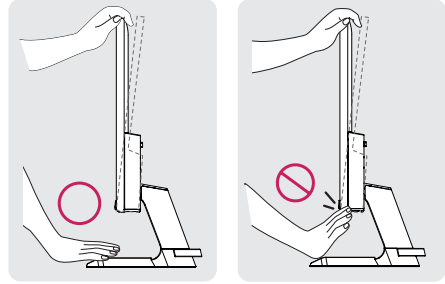
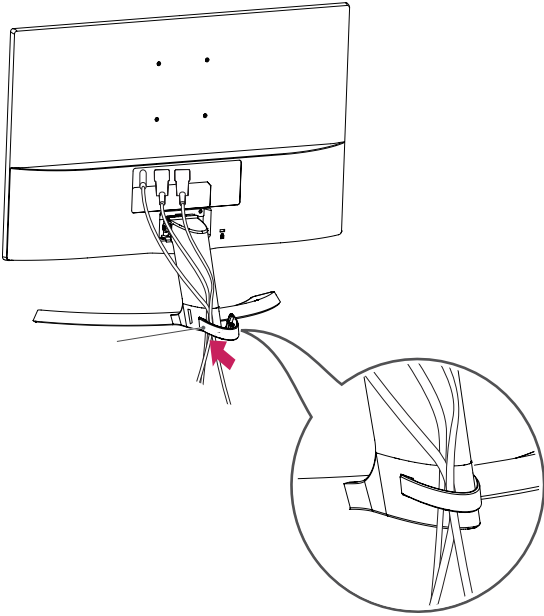
100 ( )



2

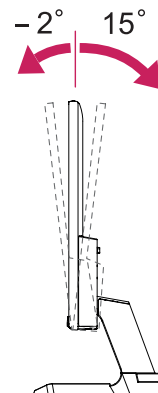


3



+15

-2

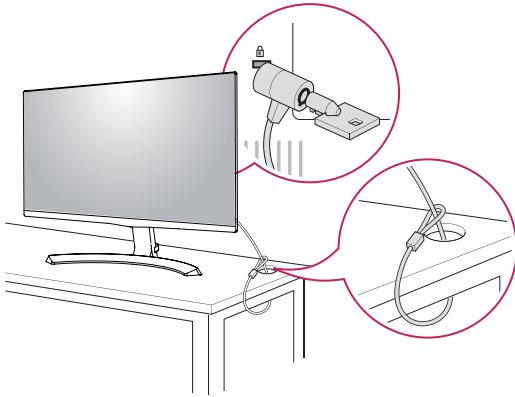


Kensington

Kensington

Kensington  
<http://www.kensington.com>.

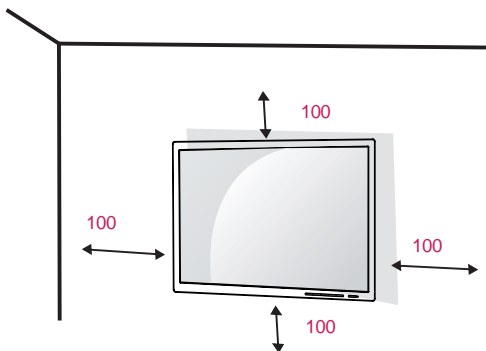
*Kensington*



Kensington



100



( )

1

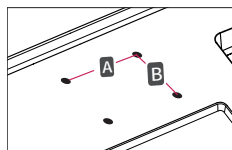
2

«LG»

	22MP68VQ 23MP68VQ 24MP68VQ	27MP68VQ
(A x B)	75 x 75	100 x 100
	M4 x L10	
	4	
( )	LSW 149	

y

(A x B)



!



y

y

LG

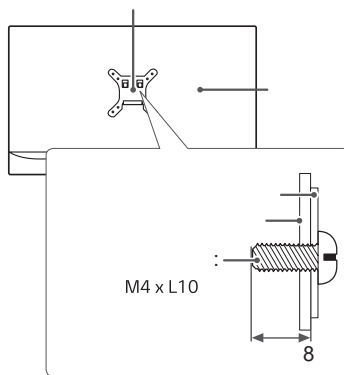
y

y

VESA.

y

8



y

y

y

y

y

VESA.

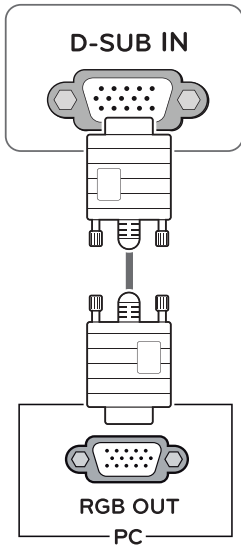
# PC

**y** Plug & Play\*.  
\* Plug & Play:

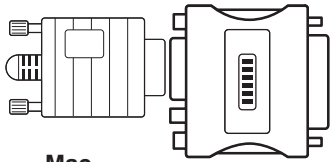
PC

## D-SUB

D-sub, 15-



**y** D-sub Macintosh.



**y** Apple Macintosh

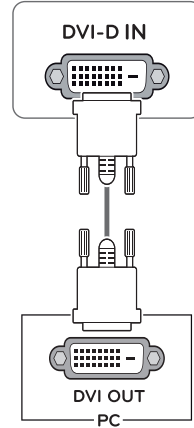
15-

D-SUB VGA (3- )  
15-

2-

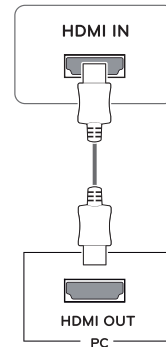
## DVI-D

DVI,



## HDMI

PC PC HDMI-



**y** HDMI PC

**y** HDMI.

HDMI

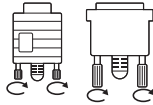
**y** HDMI

HDMI<sup>®</sup>/TM-  
HDMI<sup>®</sup>/TM-

Ethernet



y



AV-

y

**HDMI**

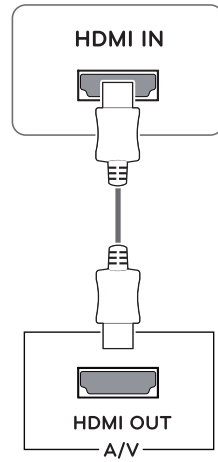
y

HDMI,  
AV  
AV



y

(D-SUB/DVI-D/HDMI)



y

y



y

HDMI PC

y

HDMI.

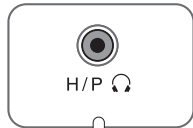
HDMI

y

HDMI

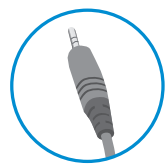
HDMI<sup>®/™</sup>-  
HDMI<sup>®/™</sup>-

Ethernet



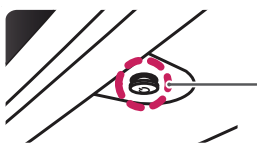
y

y



y

- 1 -
- 2 - ( / ) - ( / ),
- 3 - ,






© Длительное нажатие: выключить монитор

	у (D-SUB/DVI-D/HDMI) у — D-Sub.





























