

**+** Depending on country  
תלוי במדינה



**English**

It is recommended that use the supplied components.

מומלץ להשתמש ברכיבים המסופקים.

**עברית**



[www.lg.com](http://www.lg.com)

**English**

You can download manuals from the LGE website.

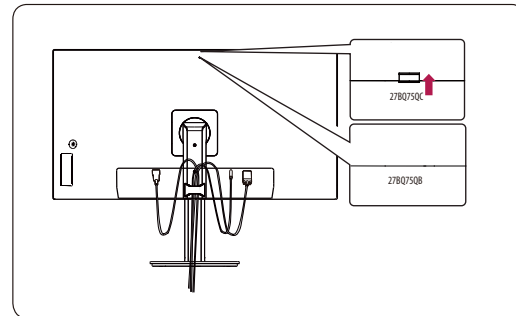
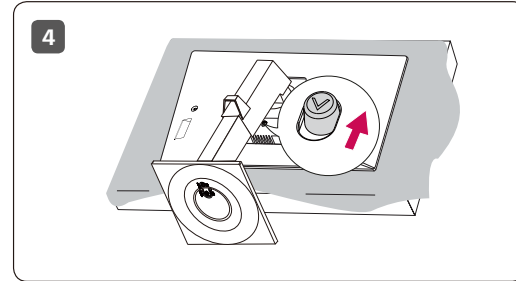
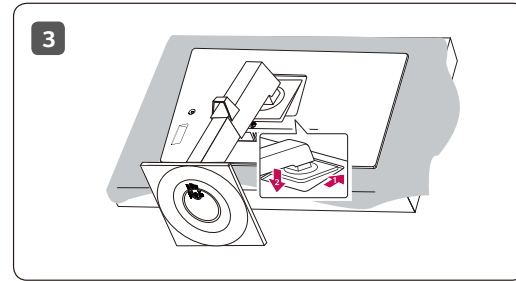
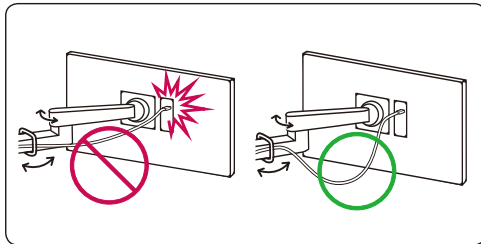
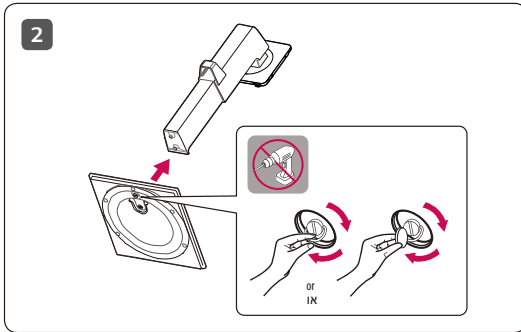
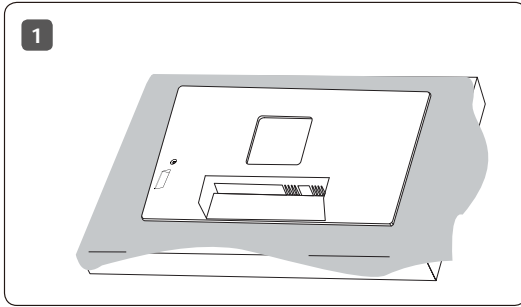
ניתן להוריד מדריכים למשתמש מאתר האינטרנט של LGE.

**עברית**



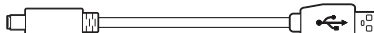
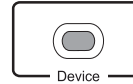
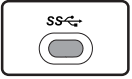
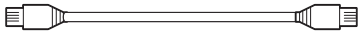
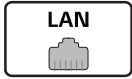
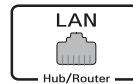
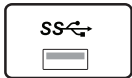
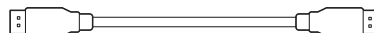
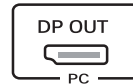
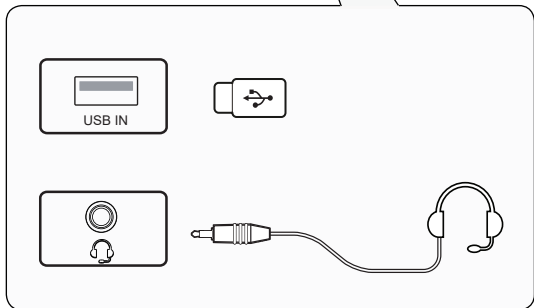
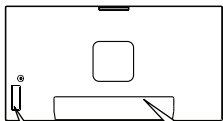
(2307-REV00)





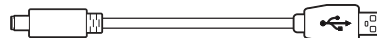
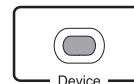
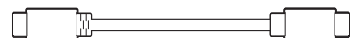
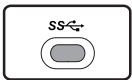
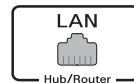
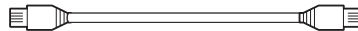
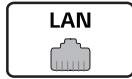
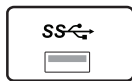
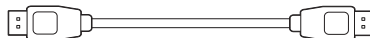
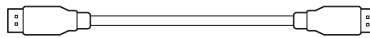
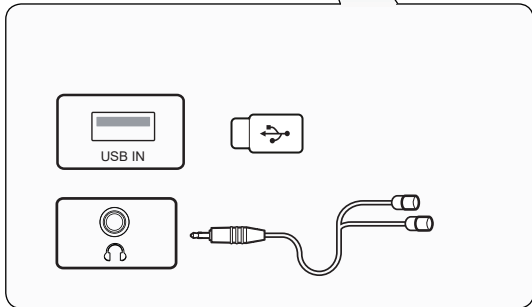
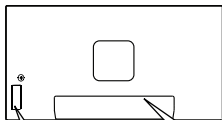


27BQ75QC





27BQ75QB





## English

- Using a DVI to HDMI / DP (DisplayPort) to HDMI cable may cause compatibility issues.
- The USB port on the product functions as a USB hub.
- Make sure to use the supplied cable. Otherwise, this may cause the device to malfunction.

השימוש בכבל DVI ל-HDMI או כבל DisplayPort ל-HDMI עלול לגרום לבעיות תאימות.

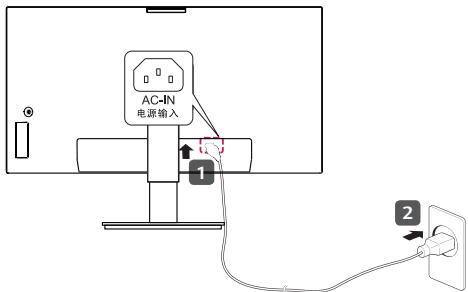
פיתחת USB במוצר מתפקדת כמרכזת USB.

יש להשתמש בכבל המסופק. שימוש בכבל אחר עלול לגרום לכך שהמכשיר יפעל באופן לא תקין.

## עברית



27BQ75QC



27BQ75QB

