



SIMPLE MANUAL

LG Wi-Fi Sound Bar

ENGLISH

Please read this manual carefully before operating your set and retain it for future reference.

To view the instructions of advanced features, visit <http://www.lg.com> and then download Owner's Manual. Some of the content in this manual may differ from your unit.

MODEL

SN8Y

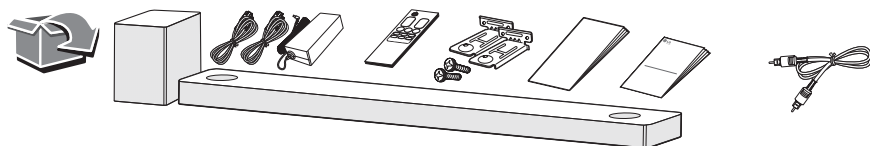


MFL70269684

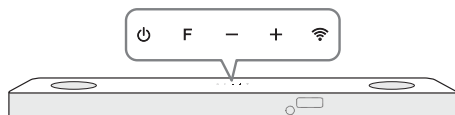
2106_Rev04

www.lg.com

Copyright © 2020-2022 LG Electronics Inc. All Rights Reserved.



Front Panel



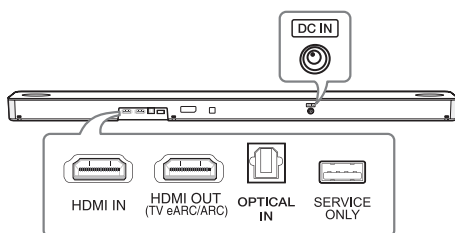
- ⏻ (Standby) Switches the unit ON or OFF.
 F (Function) Selects function.
 -/+ (Volume) Adjusts volume.
 📶 (Wi-Fi) Selects Wi-Fi function.



Reset the Unit

Press and hold the 📶 on the unit until you hear the beep sound once.

Rear Panel



- DC IN Connect to the AC adapter.
 HDMI IN Connect to device with HDMI OUT.
 HDMI OUT (TV eARC/ARC) Connect to a TV.
 OPTICAL IN Connect to an optical device.
 USB (Service only) S/W download connector.



Make sure to properly align and connect the optical cable; improper alignment may cause damage to the jack.

Subwoofer Connection

Place the wireless subwoofer near the sound bar and follow steps below.

- 1 Connect the power cord of the sound bar and the wireless subwoofer to the outlet.
- 2 Turn on the sound bar.
 - The sound bar and wireless subwoofer will be **automatically** connected. The subwoofer's green LED turns on.

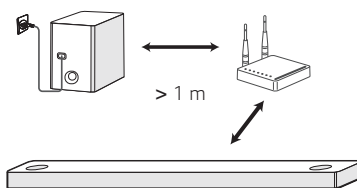
Manually Subwoofer Connection

If the subwoofer does not make sound, try to connect manually.

- 1 Press **Pairing** on the rear of the wireless subwoofer.
 - The green LED on the rear of the wireless subwoofer blinks quickly.
(If the green LED does not blink, press and hold the **Pairing**.)
- 2 Turn on the sound bar.
 - Pairing is completed. The green LED on the rear of the wireless subwoofer turns on.



Keep the sound bar and the subwoofer away from the device (ex. wireless router, microwave oven, etc.) over 1 m to prevent wireless interference.

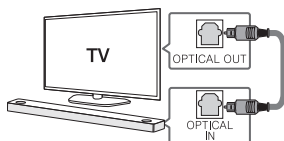


TV Connection

Connect the sound bar and TV using Optical (A) or HDMI ARC (B).

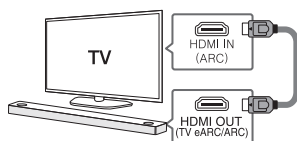
A Optical Connection

- 1 Connect the sound bar to the TV using Optical cable.
- 2 Set up [External Speaker (Optical)] on your TV setting menu.



B HDMI (TV eARC/ARC) Connection

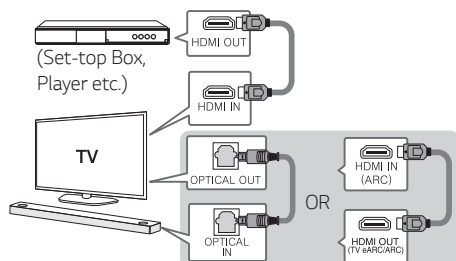
- 1 Connect the sound bar to the TV using HDMI cable.
- 2 Set up [External Speaker (HDMI ARC)] on your TV setting menu.



- HDMI connection is unavailable if your TV does not support HDMI ARC.
- If this unit is connected by OPTICAL and ARC at the same time, the ARC signal has a higher priority.

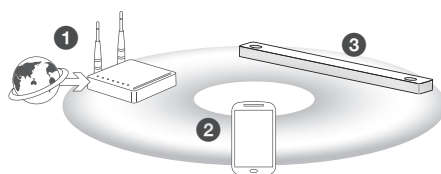
Additional Device Connection

- 1 Connect to the external device like as follow.



- 2 Set the input source by pressing **F** repeatedly.

Network Connection



- 1 Check network condition. A router connected to network should be installed.
- 2 Connect your smart device to your home network.
- 3 Connect the sound bar to the power supply.



All devices should be connected to same router.

Step.1 Install "Google Home" App

Download the Google Home App from the Google Play or App Store.

Step.2 Set up the Wi-Fi connection with app

- 1 Connect your smart device to the Wi-Fi network that you'll use for your unit.



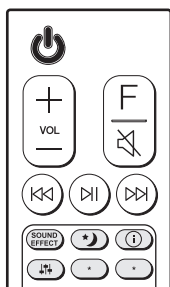
In case of iOS devices, it should be turned on **Bluetooth** setting on your smart device.

- 2 Launch the "Google Home" app.
- 3 Follow the steps for Wi-Fi connection on the app.
 - When the unit is properly connected to Wi-Fi, "CONNECTED" will appear on the display window with sound.

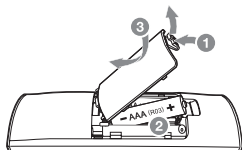


- When connect to Wi-Fi, this app may request to create a Google Account. You will need a Google account to use this app.
- "Google Home" app is provided by Google. It might be revised by a change of Google Policy.

Remote control



Replacement of Battery



SOUND EFFECT: Selects a sound effect mode.

- **TV remote:** Long press **SOUND EFFECT** and press it again to use TV remote control.

🌙: Turns on or off the Night time mode.

i: Displays the information of a file, an input source, a connected **Bluetooth** device name or an application name.

- **Auto Power ON/OFF:** Long press **i** and press it again.

⬆️⬆️⬆️: Adjusts sound level of each speaker.

- **Surround sound:** Long press ⬆️⬆️⬆️ and press it again.

*: This button is not available.

Additional

Download LG Sound Bar Application

You can manage the speaker settings and control the speaker by using "LG Sound Bar".

Download "LG Sound Bar" on the App Store or Google Play Store.

AI Room calibration

AI Room Calibration is a sound tuning tool, which adjusts the audio settings of the Sound Bar based on the room acoustics and environment.

To access the AI Room Calibration it is necessary to install the "LG Sound Bar" app. On [Sound Setting] menu, choose [AI Room Calibration].

Additional Information

Specification

Power consumption	Refer to the main label.
	Networked standby : 5.0 W (If all network ports are activated.)
AC adapter	<ul style="list-style-type: none"> • Model: DA-50F25 • Manufacturer : Asian Power Devices Inc. • Input: 100 - 240 V ~ 50 - 60 Hz • Output: 25 V $\overline{\text{---}}$ 2 A
	<ul style="list-style-type: none"> • Model: MS-Z2000R250-050D0-P • Manufacturer: MOSO POWER SUPPLY TECHNOLOGY CO., LTD. • Input: 100 - 240 V ~ 50/60 Hz • Output: 25 V $\overline{\text{---}}$ 2 A
Dimensions (W x H x D)	Approx. 1060.0 mm x 57.0 mm x 119.0 mm (with foot)
Amplifier (Total RMS Output power)	440 W RMS

Design and specifications are subject to change without notice.



Rear Speakers Ready

Ready for surround sound with Rear Speakers Kit sold separately. (SPK8-S)

To enjoy content containing Dolby Atmos® and DTS:X®, the connected device and content must support Dolby Atmos® and DTS:X®.

How to disconnect the wireless network connection or the wireless device

Turn off the unit by pressing the power button for more than 3 seconds.

HDMI™
HIGH-DEFINITION MULTIMEDIA INTERFACE

OPEN SOURCE SOFTWARE NOTICE INFORMATION

To obtain the source code under GPL, LGPL, MPL, and other open source licenses, that is contained in this product, please visit <http://opensource.lge.com>.

In addition to the source code, all referred license terms, warranty disclaimers and copyright notices are available for download.

LG Electronics will also provide open source code to you on CD-ROM for a charge covering the cost of performing such distribution (such as the cost of media, shipping, and handling) upon email request to opensource@lge.com.

This offer is valid for a period of three years after our last shipment of this product. This offer is valid to anyone in receipt of this information.

Declaration of Conformity



Hereby, LG Electronics declares that the radio equipment type Wi-Fi SOUND BAR is in compliance with Directive 2014/53/EU. The full text of the EU declaration of conformity is available at the following internet address:

<http://www.lg.com/global/support/cedoc/cedoc#>

For consideration of the user, this device should be installed and operated with a minimum distance of 20 cm between the device and the body.



Российская Федерация

Импортер ООО "ЛГ Электроникс Рус"

Адрес импортера: 143160, Российская Федерация, Московская область, Рузский городской округ, территория
Минское шоссе, километр 86-й, дом 9

Адрес производителя : ЛГ Электроникс (Хужоу) Инк., завод Хатаи
516006, Китай, пров. Гуандонг, г. Хужоу, Промышленная зона
Жонгкай, Индустриальный парк Хутай, ХуФенг Донг Уи Роуд, 13.

Сделано в Китае

Україна

Вироблено в: ЛГ Електронікс (Хужоу) Інк., завод Хатай
516006, Китай, пров. Гуандонг, м. Хужоу, Промислова зона Жонгкай,
Індустріальний парк Хутай, ХуФенг Донг Уі Роуд, 13.

Қазақстан Республикасы

Импорттаушы АҚ "ЭЛ Джи Электроникс Алматы Қазақстан", 050061, Алматы қ., Көкорай көшесі, 2А/9

Өндірушінің мекенжайы: LG Electronics(Huizhou) Inc. Huitai Factory
516006, Қытай, Гуандонг ауданы, Хужоу қаласы, Жонгкай өнеркәсіптік аймағы,
Хутай Индустриялық саябағы, ХуФенг Донг Уи Роуд, 13.

Қазақстан Республикасы территориясында тұтынушылардан келіп түскен талаптар мен ұсыныстарды
қарайтын және тауарды жөндеу мен техникалық қызмет көрсететін ұжым:

АҚ «Эл Джи Электроникс Алматы Қазақстан», 050061, Қазақстан Республикасы, Алматы қ., Көкорай көшесі,
2А/9. Басқа сервис орталықтары жайында мағлұматты "Тұтынушыға қызмет көрсету орталығына" телефон
шалу арқылы білуге болады.

Қытайда жасалған