

SIMPLE MANUAL

Mini Hi-Fi System

To view the instructions of advanced features,
visit <http://www.lg.com> and then download Owner's Manual.
Some of the content in this manual may differ from your unit.

MODEL
CM4360 (CM4360, CMS4360F)



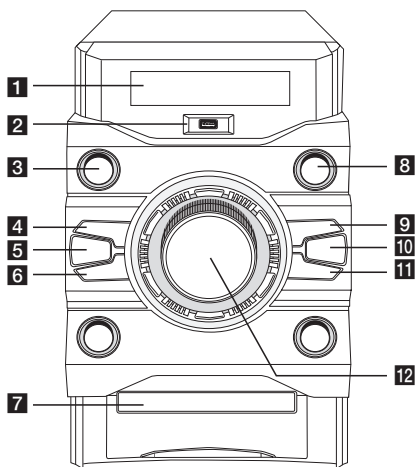
ENGLISH	HRVATSKI
DEUTSCH	SRPSKI
FRANÇAIS	SLOVENČINA
NEDERLANDS	БЛГТАРСКИ
SLOVENŠČINA	МАКЕДОНСКИ
ITALIANO	POLSKI
ESPAÑOL	ROMÂNĂ
EAHNIKA	РУССКИЙ
PORTUGUÊS	LATVIEŠU
MAGYAR	LIETUVIŲ K.
ČESKY	EESTI

www.lg.com

Copyright © 2017 LG Electronics. All Rights Reserved

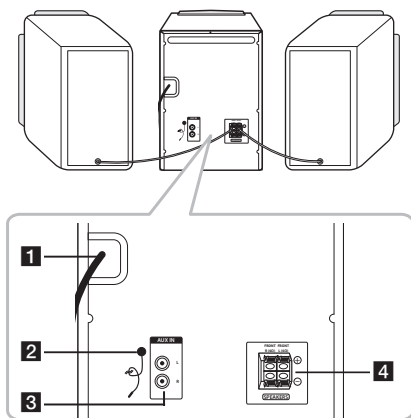


Front Panel



- 1 Display window
- 2 USB : Plays the audio files by connecting the USB device.
- 3 (Power) : Switches the unit ON or OFF.
- 4 (Skip/Search) : Searches forward. / Skips to the next track/file.
- 5 **AUTO DJ** : Selects the AUTO DJ mode.
- 6 (Skip/Search) : Searches backward. / Skips to the previous track/file.
- 7 Disc tray
- 8 **FUNCTION** : Selects the function or input source.
- 9 (Play/Pause) : Starts or pauses playback. / Selects Stereo/Mono.
- 10 **REGION EQ / B. BLAST** : Chooses region equalizer. / Selects BASS effect.
- 11 : Opens or closes the disc tray.
- 12 **Master Volume** : Adjusts volume of speaker.

Rear Panel



- 1 POWER IN
- 2 FM ANTENNA
- 3 AUX IN (L/R) connectors
- 4 SPEAKERS (L/R) terminals

Controller App



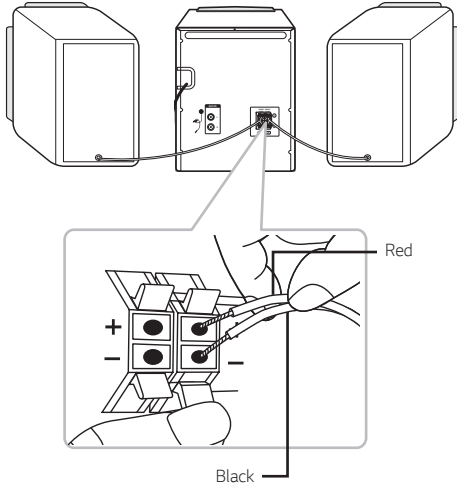
Download the **Music Flow Bluetooth** App to your device.

LG Sound Sync (Wireless)



For more information, download the online owner's manual. <http://www.lg.com>

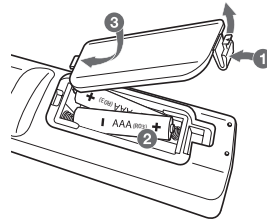
Speaker Connection



How to disconnect the wireless network connection or the wireless device


Turn off the unit by pressing the power button for more than 5 seconds.

Replacement of battery



Additional Information

Specifications

Power Requirements	Refer to the main label on the unit.
	Refer to the main label on the unit.
Power Consumption	Networked standby : 0.4 W (If all network ports are activated.)
Dimensions (W x H x D)	Approx. 204.5 mm x 278 mm x 285.5 mm
Net Weight	Approx. 2.53 kg
Bus Power Supply (USB)	5 V  500 mA
Total Output (RMS)	230 W

Design and specifications are subject to change without notice.

Declaration of Conformity



Hereby, LG Electronics declares that the radio equipment type Mini Hi-Fi System is in compliance with Directive 2014/53/EU. The full text of the EU declaration of conformity is available at the following internet address:

<http://www.lg.com/global/support/cedoc/cedoc#>

For consideration of the user, this device should be installed and operated with a minimum distance of 20 cm between the device and the body.

Frequency range	Output power (Max.)
2402 to 2480 MHz	10 dBm

