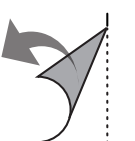
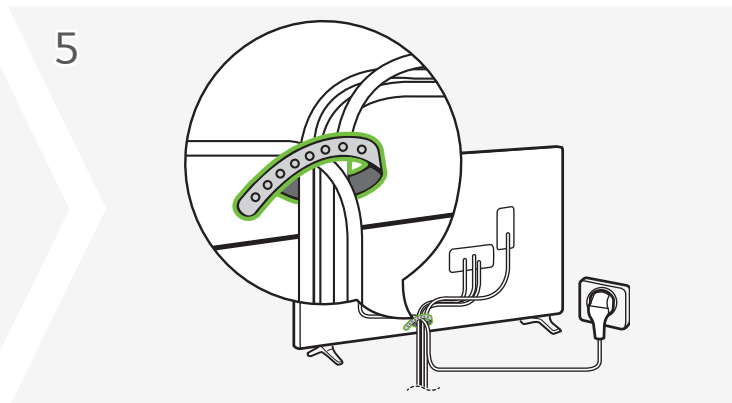
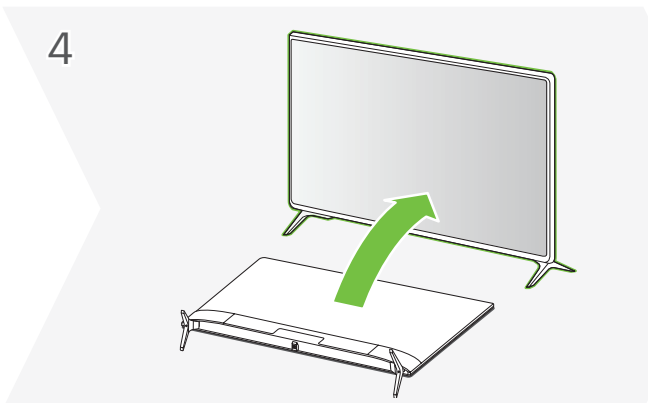
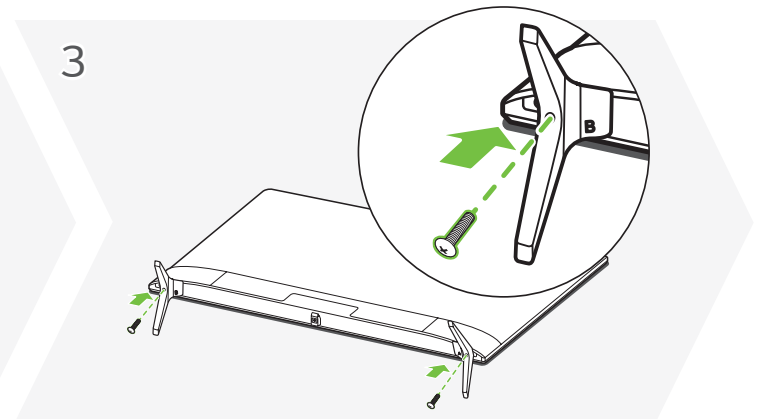
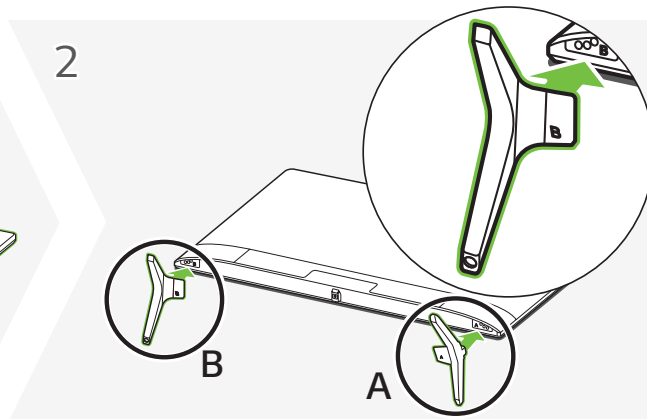
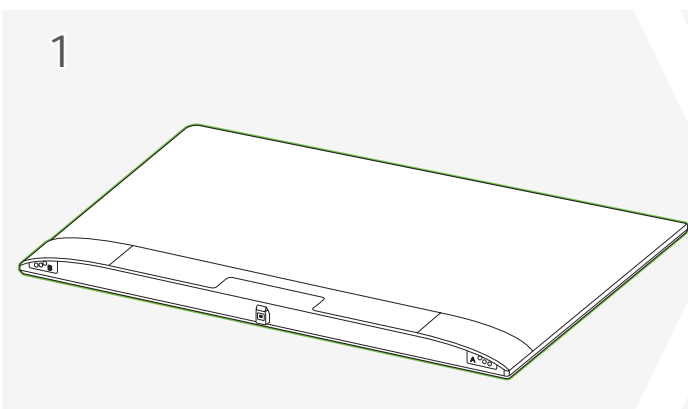
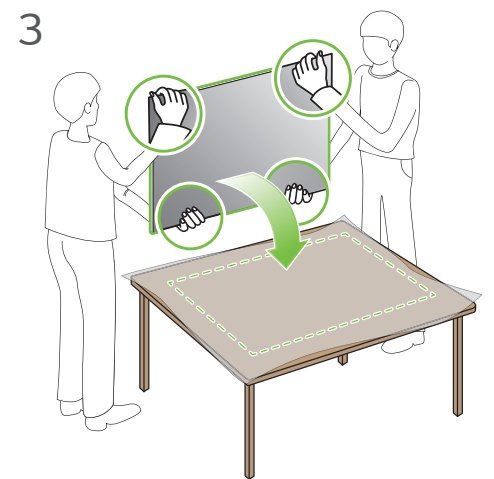
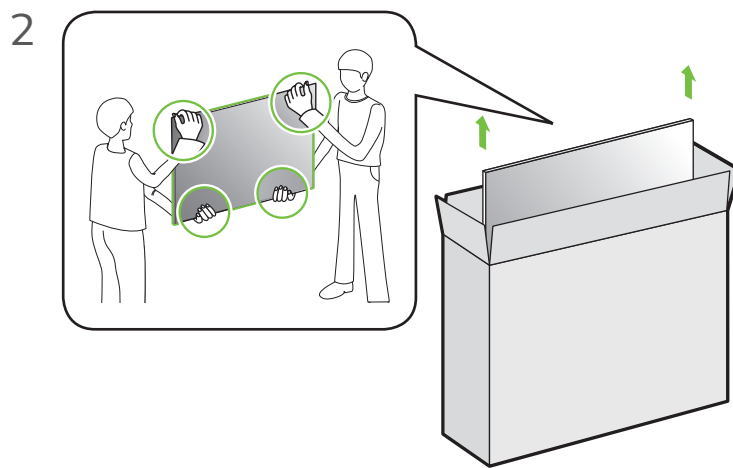
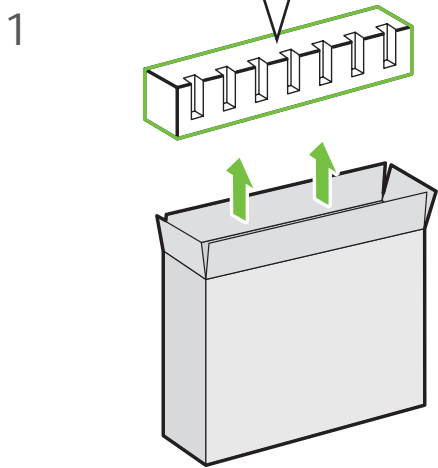
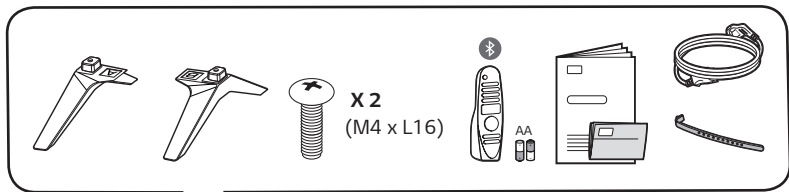
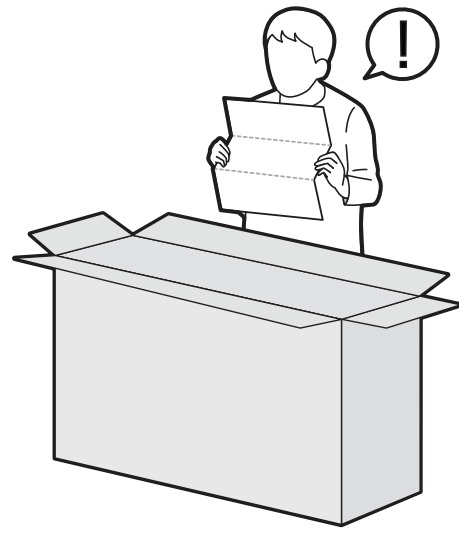
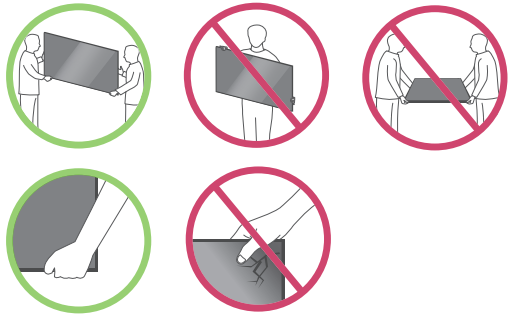
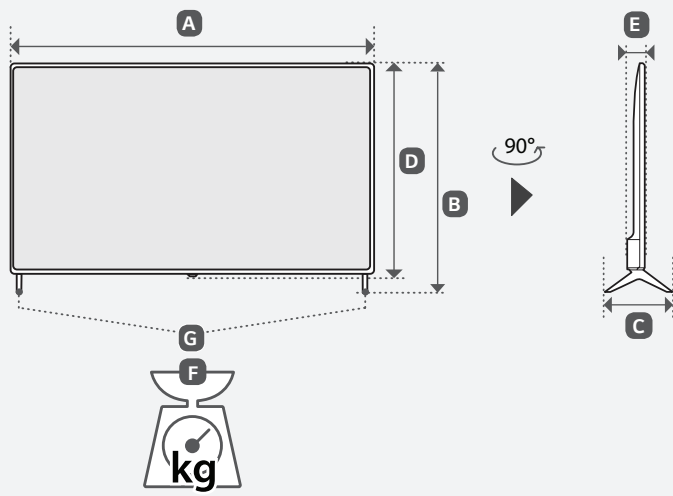
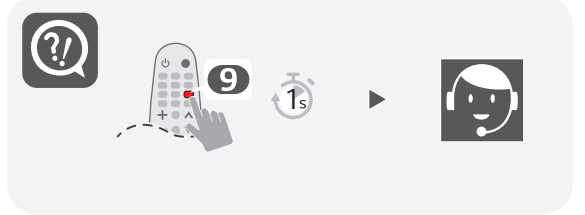
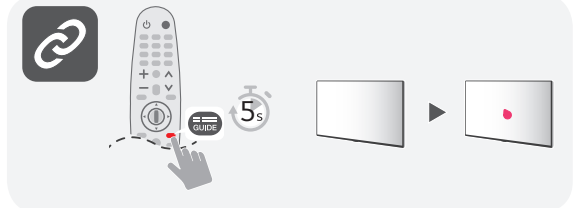
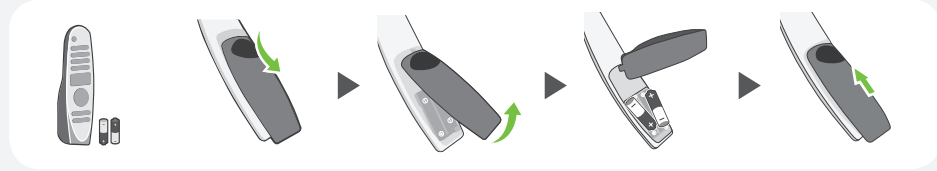
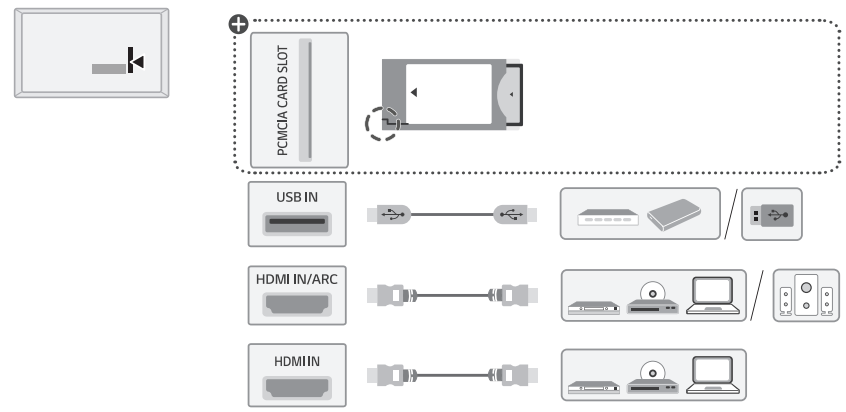
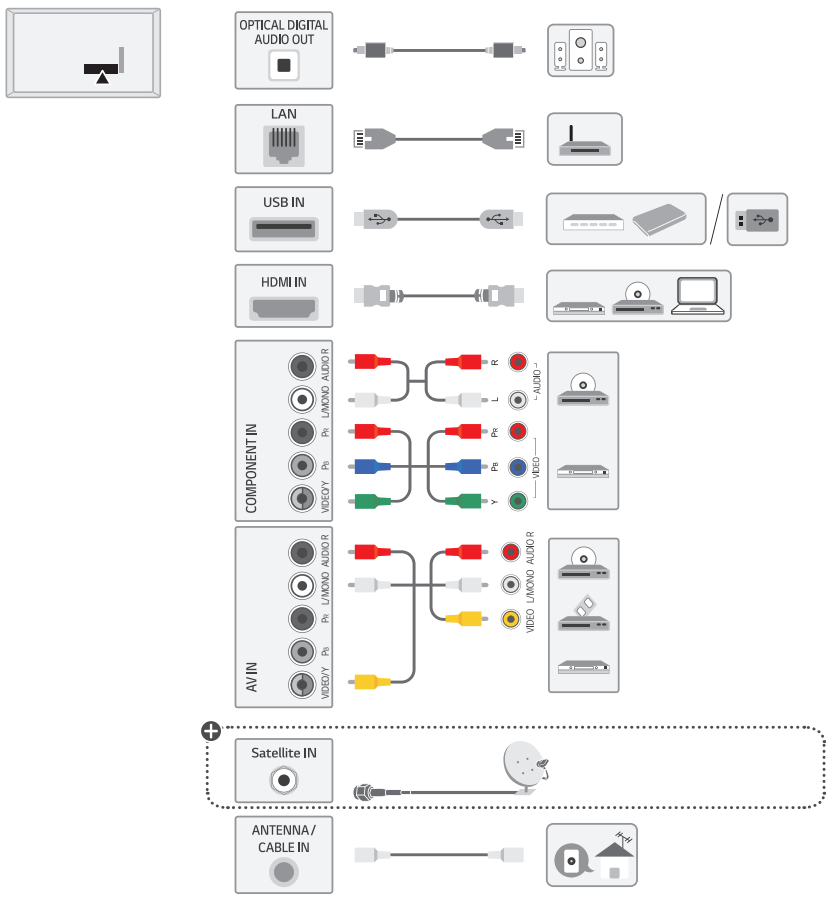


UN73\*





	A	B	C	D	E	F	F-G
	(mm)					(kg)	
43UN7340PVC	973	623	216	572	85.0	8.1	8.0
43UN7300PTC							
43UN7350PTD							
43UN731C0TC							
43UN731C0VC							
Power requirement / متطلبات الطاقة / Alimentation / Requisito de alimentação / شروط تيار / แรงดันและความถี่ไฟฟ้า / Nguồn điện yêu cầu	AC 100-240 V - 50 / 60 Hz					تيار متردد 240-100 فولت ~ 60 / 50 هرتز	



English • Read **Safety and Reference**.

العربية • قراءة الأمان والمرجع.

Français • Lire le document **Sécurité et référence**.

Português • Consulte o manual **Segurança e referência**.

فارسی • موارد ایمنی و مرجع را مطالعه نمایید.

ภาษาไทย • โปรดอ่านคู่มือใช้**ความปลอดภัยและการอ้างอิง**

Tiếng Việt • Đọc phần **An toàn và Tham khảo**.

+ : Depending on model / حسب الطراز / Selon le modèle / Dependendo do modelo / به مدل بستگی دارد / ขึ้นอยู่กับรุ่น / Tùy theo mã sản phẩm