

SIMPLE MANUAL

3D Blu-ray™ / DVD Home Theater System

To view the instructions of advanced features,
visit <http://www.lg.com> and then download Owner's Manual.
Some of the content in this manual may differ from your unit.

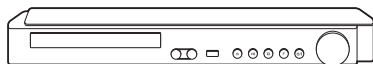
LHB755W



www.lg.com



Front Panel



- MIC 1/2** Connects a microphone.
USB Port Connects a USB device.
 Disc Tray Open / Close
 Starts / Pauses playback.
 Stops playback.
 Changes the input source or function.
 Power On / Off
Volume knob Adjusts volume.

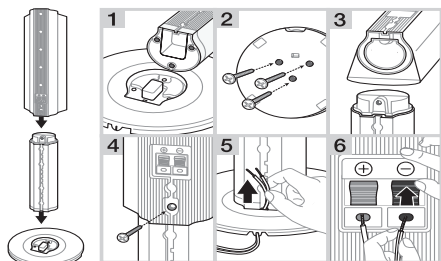
Rear Panel



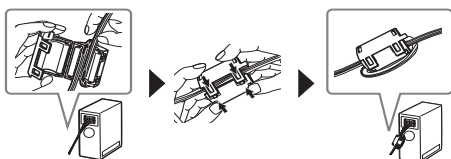
- SPEAKERS** Connects to speakers.
LAN Connects to Internet.
HDMI OUT (TV ARC) Connects to TV.
HDMI IN 1, 2 Connects to digital device.
ANTENNA FM Connects to radio antenna.
AUX (L/R) INPUT Connects to analogue device.
OPTICAL IN Connects to digital device.

1

Speaker Assembling



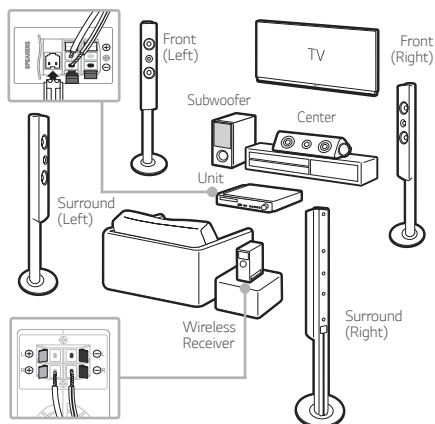
About Ferrite Core (Optional)



2

Speaker Connection

! Speaker design and connection method may be different according to models.



3

Pair Up with Wireless Receiver

- 1 Connect the rear speakers to the wireless receiver.
- 2 Connect the power cord of wireless receiver to the outlet.
- 3 Turn on the player :
The player and wireless receiver will be **automatically** connected. A yellow-green LED on the wireless receiver will light on.

!

If no sound is heard from the rear speakers connected to wireless receiver, please follow as below.

- i. Adjust volume level of player to minimum.
"VOL MIN" appears on display window.
- ii. Press and hold (Mute) button on the remote control about 3 seconds.
"WL RESET" appears on display window.
- iii. Press and hold **PAIRING** on the rear of wireless receiver for more than 5 seconds using point of a pen.
- iv. Disconnect the power cord of the player and the wireless receiver. Connect them again.

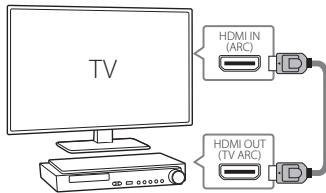
4

TV Connection

Connect with the Player and TV using HDMI ARC (A) or HDMI & Optical (B).

A HDMI(ARC) Connection

- 1 Connect the Player to the TV using HDMI cable.
- 2 Set the input selector to HDMI on the TV.
- 3 Set up [External Speaker (HDMI ARC)] on your TV setting menu.
- 4 Follow the instructions on the TV screen using remote control.



B HDMI & Optical Connection

- 1 Connect the Player to the TV using HDMI & Optical cable.
- 2 Set the input selector to HDMI on the TV.
- 3 Set up [External Speaker (Optical)] on your TV setting menu.
- 4 Follow the instructions on the TV screen using remote control.



5

Home Menu

After initial setup, Home menu appears on the TV screen. Enjoy various functions on the player.



To enjoy online services, the player should be connected to internet through wired or wireless connection.

Controller App



Download the LG AV Remote App to your device.

LG Sound Sync (Wireless)



For more information, download the online owner's manual. <http://www.lg.com>

Private Sound Mode




With MUSICflow



Additional Information

Specification

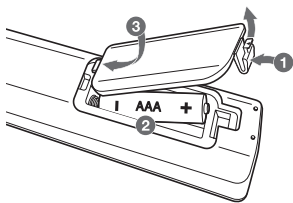
Power requirements	Refer to main label on the bottom panel.
Power consumption	Refer to main label on the bottom panel.
	Networked standby : 0.5 W (If all network ports are activated.)
Dimensions (W x H x D)	Approx. 410 mm x 55 mm x 260 mm
Net Weight (Approx.)	2.7 kg
Bus Power Supply (USB)	5 V  500 mA
Total amplifier	1200 W

Design and specifications are subject to change without notice.

How to disconnect the wireless network connection or the wireless device

Turn off the unit.

Replacement of battery



Open Source Software Notice Information

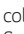
To obtain the source code under GPL, LGPL, MPL, and other open source licenses, that is contained in this product, please visit <http://opensource.lge.com>. In addition to the source code, all referred license terms, warranty disclaimers and copyright notices are available for download. LG Electronics will also provide open source code to you on CD-ROM for a charge covering the cost of performing such distribution (such as the cost of media, shipping, and handling) upon email request to opensource@lge.com. This offer is valid for three (3) years from the date on which you purchased the product.

Customer Support

You can update the Player using the latest software to enhance the products operation and/or add new features. To obtain the latest software for this player (if updates have been made), proceed the software updates or visit <http://www.lg.com> or contact LG Electronics customer care center.

POWER: This unit operates on a mains supply of 200 - 240 V~, 50/60Hz.

WIRING: This unit is supplied with a BS 1363 approved main plug. When replacing the fuse, always use of the same rating approved to BS 1362. Never use this plug with the fuse cover omitted. To obtain a replacement fuse cover contact your dealer. If the type of plug supplied is not suitable for the mains sockets in your home, then the plug should be removed and a suitable type fitted. Please refer to the wiring instructions below:

WARNING: A mains plug removed from the mains lead of this unit must be destroyed. A mains plug with bared wires is hazardous if inserted in a mains socket. Do not connect either wire to the earth pin, marked with the letter E or with the earth symbol  or coloured green or green and yellow. If any other plug is fitted, use same rating of fuse in the plug.

IMPORTANT: The wires in this mains lead are coloured in accordance with the following codes:

- **BLUE: NEUTRAL, BROWN: LIVE** - As the colours of the wires in the mains lead of this unit may not correspond with the coloured marking identifying the terminals in your plug, proceed as follows: The wire which is coloured blue must be connected to the terminal which is marked with the letter N or coloured black. The wire which is coloured brown must be connected to the terminal which is marked with the letter L or coloured red.

HDMI™
HIGH-DEFINITION MULTIMEDIA INTERFACE

 **Java**™
POWERED