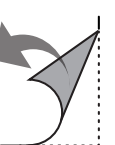
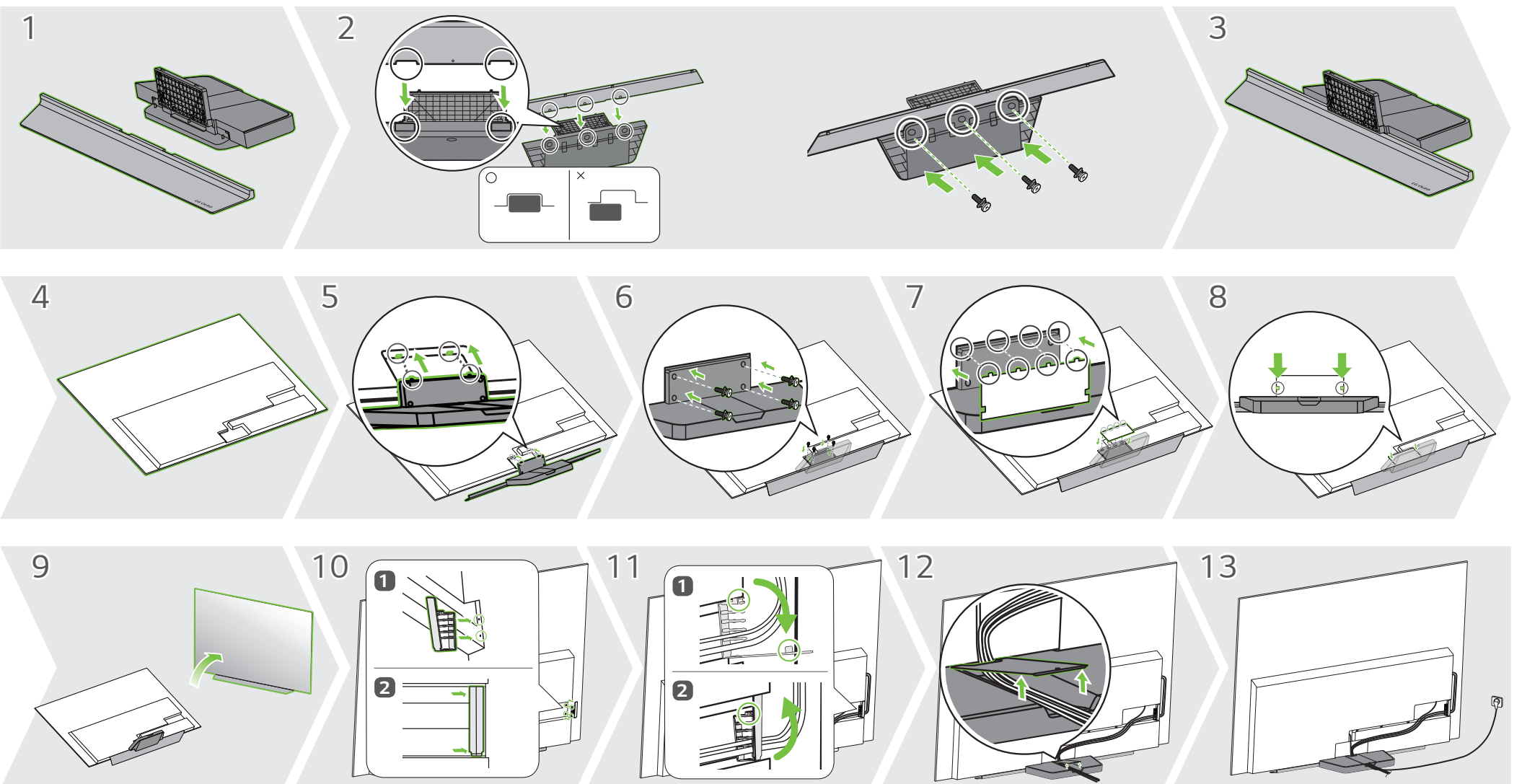
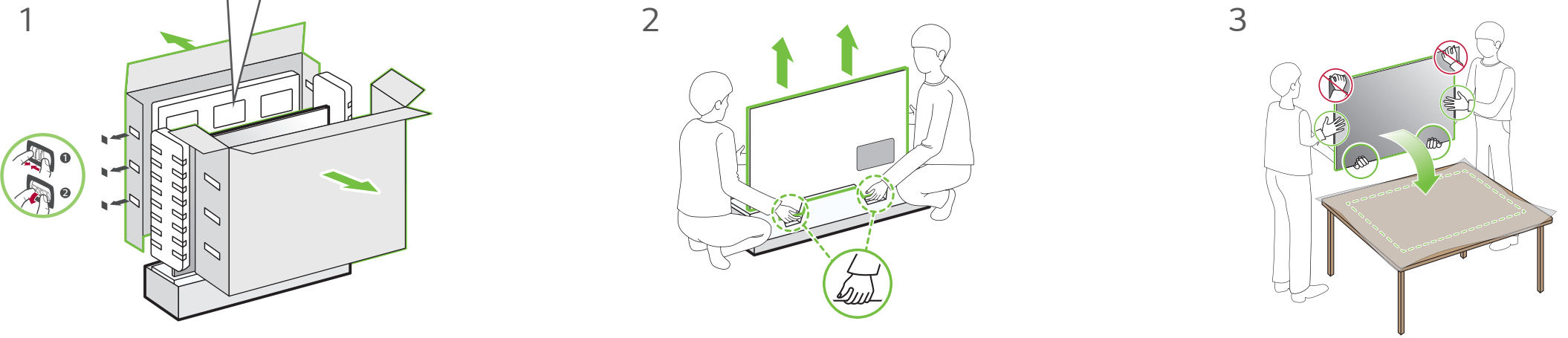
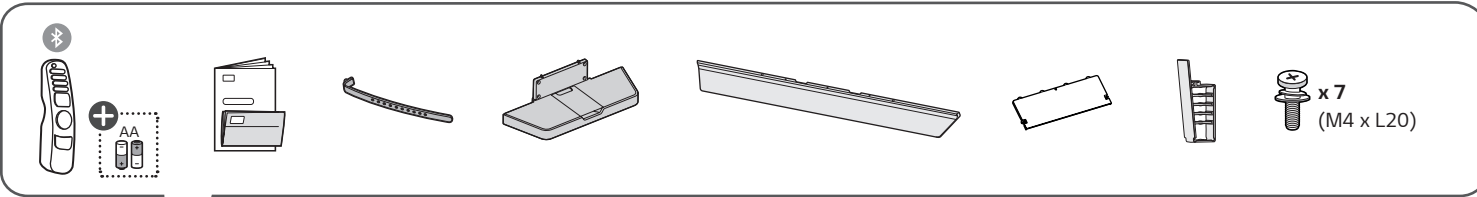
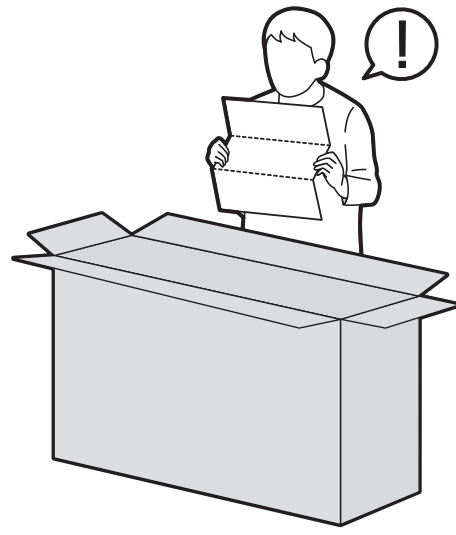
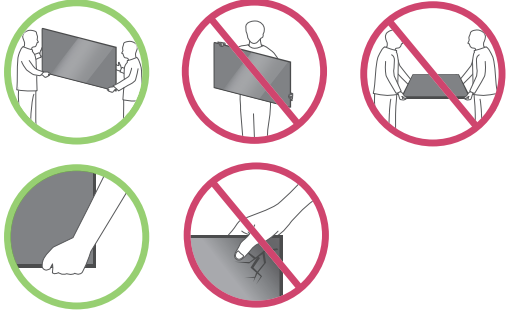


OLED83C1PSA





ANTENNA /  
CABLE IN



LAN



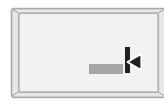
HDMI IN



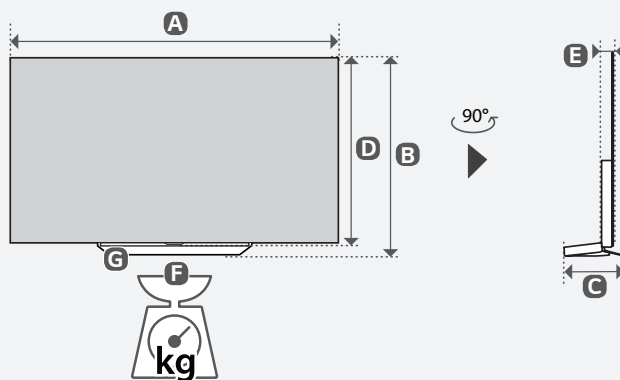
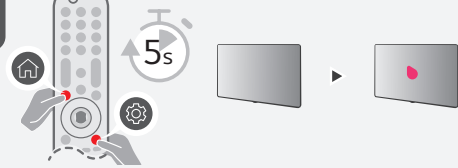
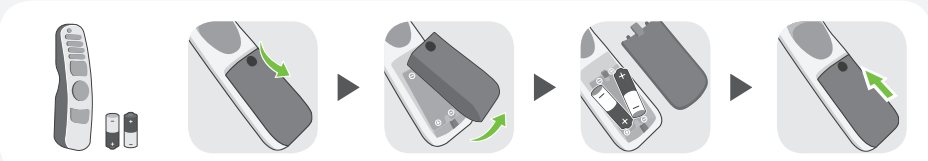
HDMI IN  
eARC/ARC



OPTICAL DIGITAL  
AUDIO OUT



USB IN



MODELS	A		B		C		D		E		F		F-G		Power consumption
MODELOS	(mm)														Consumo de potencia
OLED83C1PSA	1851	1851	1092	1092	279	279	1062	1062	55.3	55.3	41.6	41.6	32.3	32.3	776 W
Power requirement / Alimentación requerida									AC 100-240 V ~ 50/60 Hz						



**ENGLISH** Read **Safety and Reference**.  
Due to environmental government regulations about imports and battery destruction in Colombia, TVs will not include the batteries for the remote control.

**ESPAÑOL** Leer **Seguridad y Consultas**.  
Por regulaciones de tipo ambiental respecto a la importación y destrucción de baterías en Colombia; los televisores no van a traer incluidas las pilas del control remoto.

**ENGLISH**  
**Easy Setup Guide**  
Please read this manual carefully before operating your set and retain it for future reference.

**ESPAÑOL**  
**Guía Rápida de Configuración**  
Lea atentamente este manual antes de poner en marcha el equipo y consérvelo para futuras consultas.

⊕ : Depending upon model / Según el modelo