



OWNER'S MANUAL

# LG CLOUD DEVICE THIN CLIENT

Please read this manual carefully before operating your set  
and retain it for future reference.

CK500W      CK500N  
CK501W      CK501N

## SAFETY INSTRUCTIONS

- Please make sure the device is installed near the wall outlet to which it is connected and that the outlet is easily accessible.
- As long as this unit is connected to the AC wall outlet, it is not disconnected from the AC power source even if the unit is turned off.
- Be sure to use power cords and AC adapters provided or approved by LG Electronics, Inc.
- Do not use this equipment near water such as near a bathtub, washbowl, kitchen sink, laundry tub, in a wet basement, or near a swimming pool.
- Equipment is provided with ventilation openings in the cabinet to allow the release of heat generated during operation. If these openings are blocked, built-up heat can cause failures which may result in a fire hazard. Therefore, NEVER:
  - Block the bottom ventilation slots by placing the equipment on a bed, sofa, rug, etc.
  - Place the equipment in a built-in enclosure unless proper ventilation is provided.
  - Cover the openings with cloth or other material.
  - Place the equipment near or over a radiator or heat source.

## OPEN SOURCE SOFTWARE NOTICE INFORMATION

(Only CK500W, CK501W)

To obtain the source code under GPL, LGPL, MPL, and other open source licenses, that is contained in this product, please visit <http://opensource.lge.com>.

In addition to the source code, all referred license terms, warranty disclaimers and copyright notices are available for download.

LG Electronics will also provide open source code to you on CD-ROM for a charge covering the cost of performing such distribution (such as the cost of media, shipping, and handling) upon email request to [opensource@lge.com](mailto:opensource@lge.com).

This offer is valid for a period of three years after our last shipment of this product.

This offer is valid to anyone in receipt of this information.

## LICENSE

Each model has different licenses. Visit [www.lg.com](http://www.lg.com) for more information on the license.



The terms HDMI and HDMI High-Definition Multimedia Interface, and the HDMI Logo are trademarks or registered trademarks of HDMI Licensing Administrator, Inc. in the United States and other countries.



The SuperSpeed USB Trident logo is a registered trademark of USB Implementers Forum, Inc.

## IMPORTANT NOTES ON INSTALLING AN OPERATING SYSTEM

(Only CK500N, CK501N)

This product does not provide an operating system to run the product.

Please note that LG Electronics does not sell an operating system such as Windows, and users are required to purchase and install an operating system to run the product. For more information on purchasing Windows operating systems, please contact Microsoft directly.

Due to the characteristics of the product, only Windows 10 IoT Enterprise LTSB 2016 (RS1) is available for installation. LG Electronics will not be liable for any issues caused by installing and using an operating system other than Windows 10 IoT Enterprise LTSB 2016 (RS1).

## How to install Windows 10 IoT Enterprise LTSB 2016 (RS1)

(Only CK500N, CK501N)

Follow the steps below to install Windows when you purchase and install Windows 10 IoT Enterprise LTSB 2016 (RS1).

For more information on installing Windows, refer to the manual or guide provided with Windows.

1 Install Windows

2 Install Drivers

3 Update Windows

Complete Installing Windows

## ASSEMBLING AND PREPARING

### Supported Drivers, Software and Language pack install guide

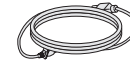
- You can download the latest version for installation on the LG Electronics website ([www.lg.com](http://www.lg.com)).

## Product Composition

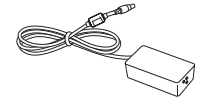
Please check whether all the components are included in the box before using the product. If there are any missing components, contact the retailer where you purchased the product.



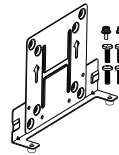
Owner's Manual/Regulatory Manual/Cards



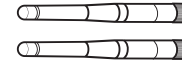
Power cord



Adapter



Bracket / Screws  
(4 ea, M4 X L10)  
(2 ea, M3)



Wifi Antenna



DVI to D-Sub Dongle



### CAUTION

- Only use an approved LG power adapter.
- Damage caused by other power adapters is not covered by warranty.



### NOTE

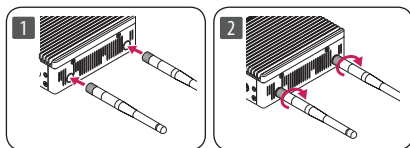
- Note that the components may look different from those shown here.
- Without prior notice, all information and specifications in this manual are subject to change to improve the performance of the product.
- Use of the DVI to D-Sub Dongle accessory included with the product is strongly advised.

## Product Installation

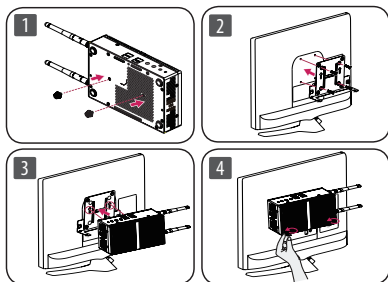
### CAUTION

- Illustrations in this document represent typical procedures, so they may look different from the actual product.
- Applying excessive force when tightening screws may cause damage to the Cloud Device. Damage caused in this way will not be covered by the product warranty.
- The product may not be mounted on some monitors with mount bracket.
  - In this case, use the product in horizontal or vertical position.
- When connecting the peripherals after mounting the product on the monitor, be sure to hold the product.

### 1. Assembling the Wifi Antenna



### 2. Mounting on the Back of the Monitor

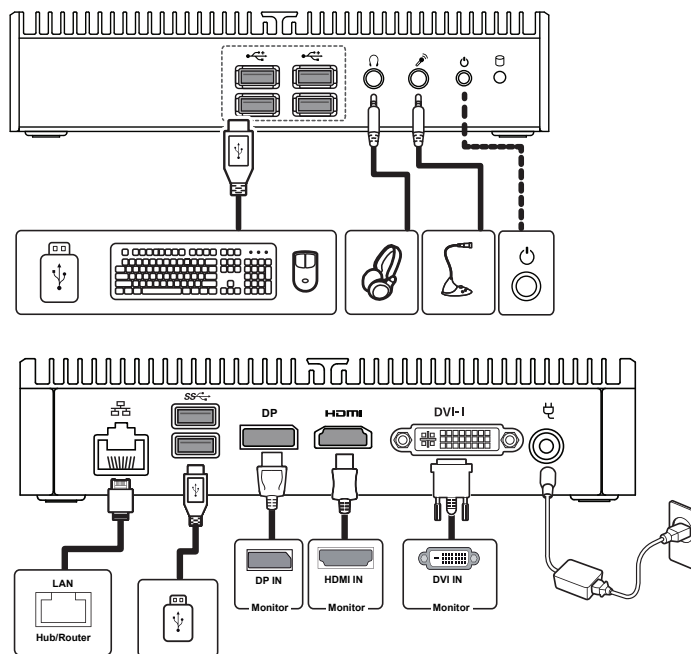


## Using the Kensington Lock

For more information on installation and usage, refer to the Kensington lock owner's manual or visit the website at <http://www.kensington.com>.

## Parts and Buttons

### Connection



## NOTE

- When you connect two monitors at the same time, one of the connections should be through DP(DisplayPort).
  - Ex.) DP+HDMI, DP+DVI-D, DP+D-Sub (with DVI to D-Sub Dongle)
- Some games (online, 3D, 2D) may not be supported, and some high-resolution videos (including Full HD and some HD videos) may stutter during playback.

## PRODUCT SPECIFICATION

AC/DC Adapter	DA-48F19, manufactured by APD Output: 19 V $\overline{\text{---}}$ 2.53 A		
Power Consumption (Typical)	Off Mode: 0.7 W * Sleep Mode: 1.0 W * Idle Mode (Display Off): 8 W * Idle Mode (Display On) : 10 W *		
Environmental Conditions	Operating Conditions	Temperature	10 °C to 40 °C
		Humidity	20 % ~ 80 %
	Storing Conditions	Temperature	-20 °C to 60 °C
		Humidity	10 % ~ 90 %
Dimensions	Width x Height x Depth (mm)		
	180 x 39.9 x 117		
Weight	1 kg		

Specifications are subject to change without notice.

\* The operating mode power consumption is measured with ENERGY STAR® test standard and the following OS. (Windows 10 IoT Enterprise LTSB 2016 (RS1))

## Dual Band Wireless module (AC3168) Specifications

Wireless LAN	
Standard	IEEE 802.11a/b/g/n/ac
Frequency Range	Output Power (Max.)
2400 to 2483.5 MHz	15.5 dBm
5150 to 5725 MHz	15.5 dBm
5725 to 5850 MHz	15.5 dBm
Bluetooth	
Frequency Range	Output Power (Max.)
2400 to 2483.5 MHz	10 dBm
<ul style="list-style-type: none"><li>As band channels can vary per country, the user cannot change or adjust the operating frequency. This product is configured for the regional frequency table.</li><li>For consideration of the user, this device should be installed and operated with a minimum distance of 20 cm between the device and the body.</li><li>"IEEE 802.11ac" is not available in all countries.</li></ul>	

## ENERGY STAR complied product

(Only CK500W, CK501W)

ENERGY STAR is a joint program of the U.S. Environmental Protection Agency and the U.S. Department of Energy helping us all save money and protect the environment through energy efficient products and practices.

The products with the ENERGY STAR logo comply with the ENERGY STAR standard, and the power management feature is enabled by default.

The monitor and computer are automatically set to sleep after 10 and 30 minutes of user inactivity. To wake your computer, click the mouse or press any key on the keyboard.

Please visit <http://www.energy.gov/powermanagement> for detail information on power management and its benefits to the environment. In addition, please visit <http://www.energystar.gov> for detail information on the ENERGY STAR joint program.



WARNING: This equipment is compliant with Class A of CISPR 32. In a residential environment this equipment may cause radio interference.

This device can be used in all regions. Read the owner's manual carefully and keep it at hand. Please note that the label attached to the product provides information for technical support.

Model

---

Serial No.

---



(Only CK500W, CK501W)

ENERGY STAR® is a set of power-saving guidelines issued by the U.S. Environmental Protection Agency (EPA).

As an ENERGY STAR® Partner LGE U. S. A., Inc. has determined that this product meets the ENERGY STAR® guidelines for energy efficiency.

Refer to [ENERGYSTAR.gov](http://ENERGYSTAR.gov) for more information on the ENERGY STAR® program.