

OWNER'S MANUAL

Multimedia Speaker System

Please read this manual carefully before operating
your set and retain it for future reference.

MODELS

LK72B (LK7 2B, LK72B-S)

LK72BE (LK72BE, LK72BE-S)



MFL70428630

www.lg.com

Copyright © 2018-2020 LG Electronics Inc. All Rights Reserved.
2003_Rev03

Safety Information



CAUTION: TO REDUCE THE RISK OF ELECTRIC SHOCK DO NOT REMOVE COVER (OR BACK) NO USER-SERVICEABLE PARTS INSIDE REFER SERVICING TO QUALIFIED SERVICE PERSONNEL



This lightning flash with arrowhead symbol within an equilateral triangle is intended to alert the user to the presence of uninsulated dangerous voltage within the product's enclosure that may be of sufficient magnitude to constitute a risk of electric shock to persons.



The exclamation point within an equilateral triangle is intended to alert the user to the presence of important operating and maintenance (servicing) instructions in the literature accompanying the product.

WARNING: TO PREVENT FIRE OR ELECTRIC SHOCK HAZARD, DO NOT EXPOSE THIS PRODUCT TO RAIN OR MOISTURE.

CAUTION: The apparatus should not be exposed to water (dripping or splashing) and no objects filled with liquids, such as vases, should be placed on the apparatus.

WARNING: Do not install this equipment in a confined space such as a book case or similar unit.

CAUTION: Do not use high voltage products around this product. (ex. Electrical swatter) This product may malfunction due to electrical shock.

CAUTION: Do not block any ventilation openings. Install in accordance with the manufacturer's instructions.

Slots and openings in the cabinet are provided for ventilation and to ensure reliable operation of the product and to protect it from over heating. The openings shall be never be blocked by placing the product on a bed, sofa, rug or other similar surface. This product should not be placed in a built-in installation such as a bookcase or rack unless proper ventilation is provided or the manufacturer's instruction has been adhered to.

NOTICE: For safety marking information including product identification and supply ratings, please refer to the main label on the bottom or the other surface of the product.

CAUTION concerning the Power Cord

The Power Plug is the disconnecting device. In case of an emergency, the Power Plug must remain readily accessible.

Check the specification page of this owner's manual to be certain of the current requirements.

Do not overload wall outlets. Overloaded wall outlets, loose or damaged wall outlets, extension cords, frayed power cords, or damaged or cracked wire insulation are dangerous. Any of these conditions could result in electric shock or fire. Periodically examine the cord of your device, and if its appearance indicates damage or deterioration, unplug it, discontinue use of the device, and have the cord replaced with an exact replacement part by an authorized service center. Protect the power cord from physical or mechanical abuse, such as being twisted, kinked, pinched, closed in a door, or walked upon. Pay particular attention to plugs, wall outlets, and the point where the cord exits the device.

This device is equipped with a portable battery or accumulator.

How to Safely remove the batteries or the battery pack from the equipment:

To Remove the old batteries or battery pack, follow the assembly steps in reverse order. To prevent contamination of the environment and bring on possible threat to human and/or animal health, the old batteries or the battery pack must be put in an appropriate container at designated collection points. Do not dispose of batteries or battery pack together with other waste. It is recommended that you use local, free reimbursement systems batteries or battery packs, (may not be available in your area). The batteries or the battery pack should not be exposed to excessive heat such as sunshine, fire or the like.

CAUTION: No naked flame sources, such as lighted candles, should be placed on the apparatus.

Symbols

~	Refers to alternating current (AC).
≡	Refers to direct current (DC).
⊞	Refers to class II equipment.
⏻	Refers to stand-by.
I	Refers to "ON" (power).
⚡	Refers to dangerous voltage.

Table of Contents

1 Getting Started

- 2 Safety Information
- 6 Unique Features
- 7 Playable file Requirement
 - 7 – Music file requirement
 - 7 – Compatible USB Devices / SD cards
 - 7 – USB device / SD card requirement
- 8 Remote control
- 9 Front panel
- 10 Rear panel

2 Connecting

- 11 Power Cord Connection
- 11 Speaker Connection
- 12 Optional Equipment Connection
 - 12 – AUX IN Connection
 - 12 – PORT. IN Connection
 - 13 – USB Connection
 - 13 – SD card Connection

3 Operating

- 14 Basic Operations
- 14 – USB/SD Operations
- 16 Using BLUETOOTH® wireless technology
- 16 – Listening to music stored on the Bluetooth devices
- 18 Radio Operations
- 18 – Listening to the radio
- 18 – Presetting the Radio Stations
- 18 – Deleting all the saved stations
- 19 Other Operations
- 19 – Turn off the sound temporarily
- 19 – Adjusting Bass level

4 Troubleshooting

- 20 Troubleshooting
- 20 – General

5 Appendix

- 21 General specifications
- 22 Trademarks and Licenses
- 22 Maintenance
- 22 – Handling the Unit

1

2

3

4

5

Unique Features

BLUETOOTH®

Listens to music stored on your **Bluetooth** device.

Portable In

Listens to music from your portable device. (MP3, Notebook, etc.)

Playable file Requirement

Music file requirement

MP3 file compatibility with this unit is limited as follows.

- Sampling frequency : within 32 to 44.1 kHz
- Bit rate : within 32 to 320 kbps
- Maximum files : 999
- Maximum folders : 999
- File extensions : ".mp3"
- Certain MP3 files may not be played depending on the type or format of the file.

Compatible USB Devices / SD cards

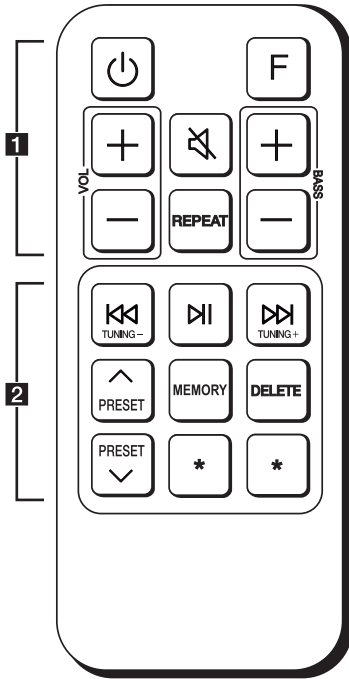
- MP3 Player : Flash type MP3 player.
- USB Flash Drive :
Devices that support USB2.0 or USB1.1.
- SD card : SD, SDHC, SDXC
- The USB / SD function of this unit does not support all USB devices and SD cards.

USB device / SD card requirement

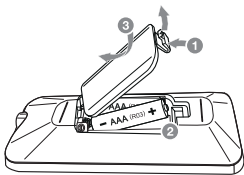
- Devices which require additional program installation when you have connected it to a computer, are not supported.
- Do not extract the USB device / SD card while in operation.
- For a large capacity USB or SD card, it may take longer than a few minute to be searched.
- To prevent data loss, back up all data.
- If you use a USB extension cable or USB hub, the USB device is not recognized.
- Using NTFS file system is not supported. (FAT(16 / 32) and ExFAT file systems are supported.)
- This unit recognizes up to 999 files.
- External HDD, Card readers, Locked devices, or hard type USB devices are not supported.
- USB port of the unit cannot be connected to PC. The unit cannot be used as a storage device.
- Some USB / SD cards may not work with this unit.

Remote control

1 Getting Started



Replacement of battery



Remove the battery cover on the rear of the remote control, and insert the battery with **+** and **-** matched correctly.

.....**1**.....
⏻ (Standby) : Turns the power on or off.

F (Function) : Selects the function and input source.

Input source / Function	Display
USB	USb
SD card	Sd
AUX input	AUX AUdIO
Portable input	PORTAbLE AUdIO
Bluetooth	bt
Radio	* 87.50 FM

* : Displays current radio frequency.

VOL (Volume) **+/-** : Adjusts speaker volume.

Mute : Mutes the sound.

REPEAT : Listens to your files repeatedly or randomly.

BASS +/- : Adjusts bass level.

.....**2**.....
KK/LL (Skip/Search)

- Skips backward or forward.

- Searches for a section within a file.

PL/PA (Play/Pause) : Starts or pauses playback.

TUNING-/+ : Selects the radio stations.

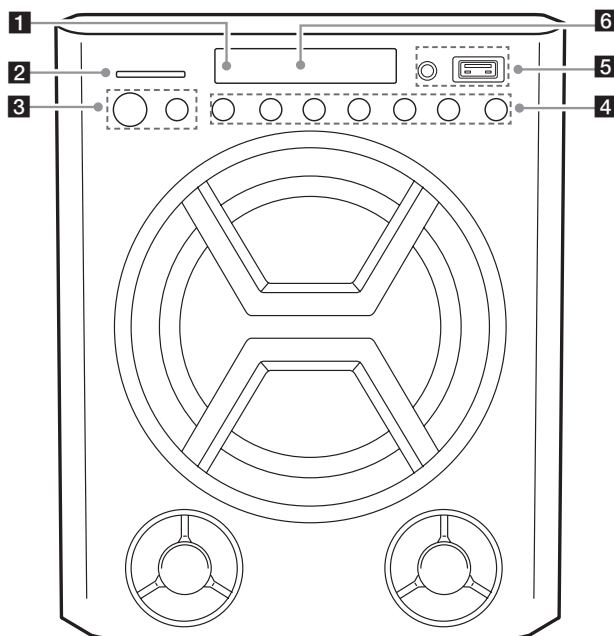
PRESET ^/v : Chooses a preset number for a radio station.

MEMORY : Stores radio stations. (Page 18)

DELETE: Deletes all the saved stations. (Page 18)

***** : This button is not available.

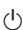
Front panel



1 Remote sensor

2 SD card slot



You can play sound files by connecting the SD card.

3  (Standby)

Turns the power on or off.

F (Function)



Selects the function and input source.

Input source / Function	Display
USB	USb
SD card	Sd
AUX input	AUX AUdIO
Portable input	 POrtAbLE AUdIO
Bluetooth	 bt
Radio	* 87.50 FM

* : Displays current radio frequency.

4 **VOL** (Volume) -/+

Adjusts speaker volume.

 /  (Skip/Search)

- Skips backward or forwards.

- Searches for a section within a file.

- Selects the radio stations.

 (Play/Pause)

Starts or pauses playback.

BASS -/+

Adjusts bass level.

5 USB port

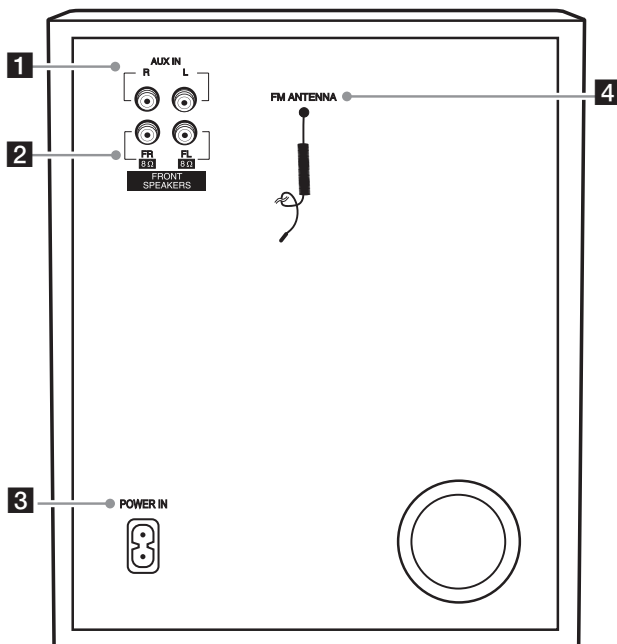
You can play sound files by connecting the USB device.

PORT. (Portable) **IN**

Connect a portable device.

6 Display window

Rear panel

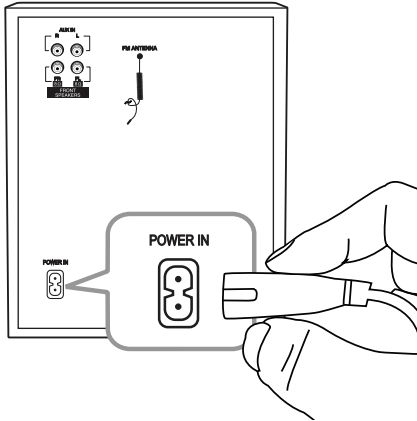
**1** AUX IN (L/R)

Connect an auxiliary device.

2 FRONT SPEAKERS (FL/FR) connector**3** POWER IN**4** FM ANTENNA

Power Cord Connection

1. Connect one end of the power cord (included) to the **POWER IN**.



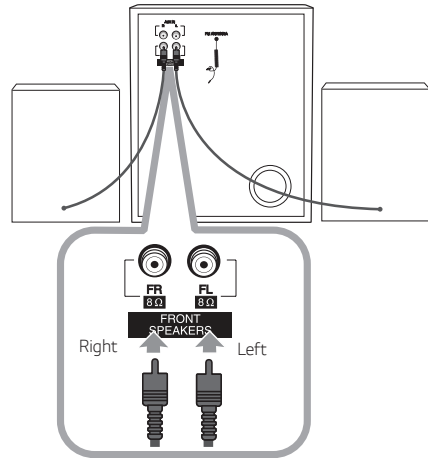
2. Plug the other end into the wall outlet.

! Note

Unplug the power cord from the wall outlet if you do not use for an extended period of time.

Speaker Connection

Connect each speaker cable to the **FRONT SPEAKERS** (FL/FR) jack.



! Note

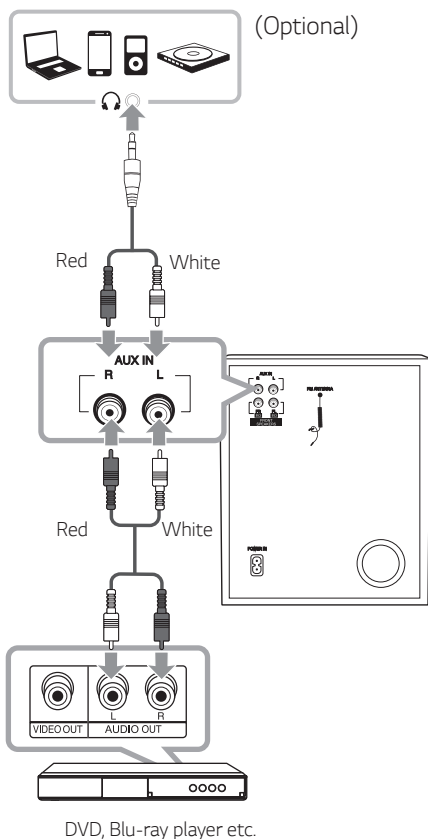
- When you connect the speakers to the unit, make sure to connect the speaker's cable and plug to the corresponding speaker connector.
- Be careful to make sure children do not put their hands or any objects into the *speaker duct.
* speaker duct : A hole for plentiful bass sound on speaker cabinet (enclosure)
- The speakers contain magnet parts, so color irregularity may occur on the TV screen or PC monitor screen. Please use the speakers far away from either TV screen or PC monitor.

Optional Equipment Connection

AUX IN Connection

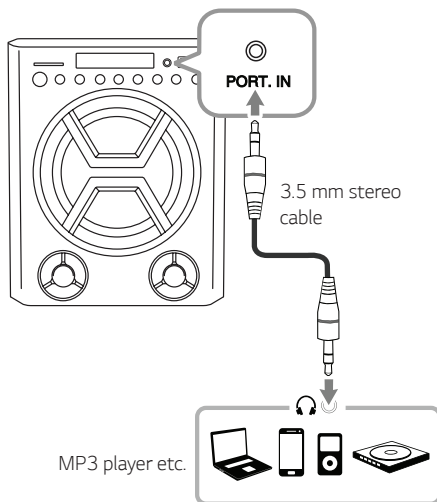
Connect an output of auxiliary device (Camcorder, TV, Player, etc) to the **AUX IN** (L/R) connector.

If your device has only one output for audio(mono), connect it to the left(white) audio jack on the unit.



PORT. IN Connection

Connect an output (earphone or line out) of portable device (MP3 or PMP etc) to the **PORT. IN** (3.5 mm) connector.




Listening to music from your portable player or external device

The unit can be used to play the music from many types of portable player or external device.

1. Connect the portable player to the **PORT. IN** connector of the unit.

Or

Connect the external device to the **AUX IN** (L/R) connector of the unit.

2. Turn the power on by pressing .
3. Press **F** to select AUX or PORTABLE function.
4. Turn on the portable player or external device and start it playing.

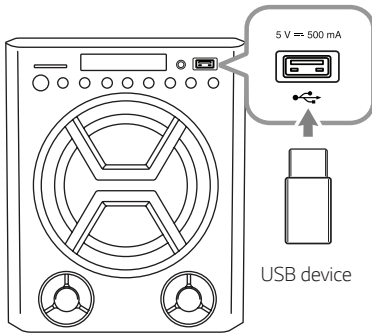
Note

Automatically switches to the PORTABLE function when you connect the portable device to the **PORT. IN** connector.

When you select AUX or PORTABLE function, "AUX" or "G" appears on the display window.

USB Connection

Connect a USB device (or MP3 player, etc.) to the USB port on the unit.



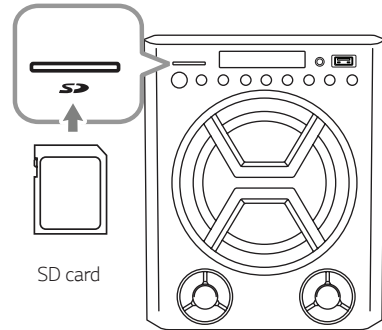
! Note

Removing the USB device from the unit:

1. Choose a different function.
2. Remove the USB device from the unit.

SD card Connection

Connect a SD card to the SD slot on the unit.



! Note

Removing the SD card from the unit:

1. Choose a different function.
2. Remove the SD card from the unit.

Basic Operations

USB/SD Operations


1. Connect the USB device to the USB port.
Or connect the SD card to the SD slot.
2. Select USB / SD function by pressing **F**.

To	Do this
Playback	Press ▶II .
Pause	Press ▶II during playback.
Searching for a section within a file	Press and hold ⏮/⏭ during playback and release it at the point you want to listen to.
Skipping to the next/previous file	Press ⏭ to go to the next file. Playing in less than 3 seconds, press ⏮ to go to the previous file. Playing after 3 seconds, press ⏮ to go to the beginning of the file.
Playing repeatedly or randomly	Press REPEAT on the remote control repeatedly, the display will be changed in the following order: OFF → ONE → ALL → rAnd (RANDOM)

! Note

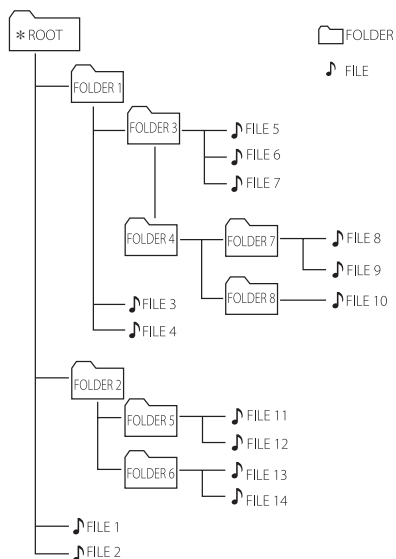
- Repeat/Random playback operates as follows.

On Display	Description
OFF	Plays songs in order and stops the playback.
ONE	Plays a same song repeatedly.
ALL	Plays all the songs repeatedly.
rAnd (RANDOM)	Plays all the songs randomly and repeatedly.

- Do not extract the USB device or SD card during operation. (play, etc.)
- Regular back up is recommended to prevent data loss.
-  appears on the window windoww in repeat/random mode.

Note

- Files are recognized as below.



- File will be played from 🎵 file No.1 to 🎵 file No.14 one by one.
- Files will be presented in order recorded and may be presented differently according to the record circumstances.

*ROOT : the first screen you can see when a computer recognize the USB / SD card are "ROOT"

Using BLUETOOTH® wireless technology

About Bluetooth

Bluetooth is wireless communication technology for short range connection.

The sound may be interrupted when the connection interfered by the other electronic wave or you connect the **Bluetooth** in the other rooms.

Connecting individual devices under **Bluetooth** wireless technology does not incur any charges. A mobile phone with **Bluetooth** wireless technology can be operated via the Cascade if the connection was made via **Bluetooth** wireless technology.

- Available Devices : Smart phone, MP3, Notebook, etc.
- Version : 4.2
- Codec : SBC

Bluetooth Profiles

In order to use **Bluetooth** wireless technology, devices must be able to interpret certain profiles. This unit is compatible with following profile.

A2DP (Advanced Audio Distribution Profile)

Listening to music stored on the Bluetooth devices

Pairing your unit and Bluetooth device

Before you start the pairing procedure, make sure the **Bluetooth** feature is activated on your **Bluetooth** device. Refer to your **Bluetooth** device's user guide. Once a pairing operation is performed, it does not need to be performed again.

1. Turn on the unit and select BT function by pressing **F**.
"📶" on the display window blinks.
2. Operate the **Bluetooth** device and perform the pairing operation. When searching for this unit with the **Bluetooth** device, a list of the devices found may appear in the **Bluetooth** device display depending on the type of **Bluetooth** device. Your unit appears as "LG-LK72".

! Note

Depending on the **Bluetooth** device type, some devices may have a different pairing process. Enter the PIN code (0000) as needed.

3. When this unit is successfully connected with your **Bluetooth** device, "✱" on the display window turns on.
4. Listen to music.
To play a music stored on your **Bluetooth** device, refer to your **Bluetooth** device's user guide.

! Note

- When using **Bluetooth** technology, you have to make a connection between the unit and the **Bluetooth** device as close as possible and keep the distance.
However, it may not work well in certain situations as described below :
 - There is an obstacle between the unit and the **Bluetooth** device.
 - There is a device using same frequency with **Bluetooth** technology such as a medical equipment, a microwave or a wireless LAN device.
- If **Bluetooth** connection does not work well, try pairing it again.
- To connect a new **Bluetooth** device, disconnect the currently connected **Bluetooth** device and connect a new **Bluetooth** device.

! Note

- The sound may be interrupted when the connection has interference from other electronic devices.
- Depending on the type of the device, you may not be able to use the **Bluetooth** function.
- You can enjoy wireless system using phone, MP3, Notebook, etc.
- The more distance between the unit and the **Bluetooth** device, the lower the sound quality becomes.
- **Bluetooth** connection will be disconnected when the unit is turned off or the **Bluetooth** device gets far from the unit.
- When **Bluetooth** connection is disconnected, connect the **Bluetooth** device to the unit again.
- When a **Bluetooth** device is not connected, "✱" on the display window blinks.
- When you use the **Bluetooth** function, adjust the volume to a proper level on the **Bluetooth** device.
- When entering **Bluetooth** function, this unit automatically connect to **Bluetooth** device which is connected the last or playbacked the last. (Auto connection may not be supported depending on the connected device specifications.)

Radio Operations

Be sure to fully extend the FM wire antenna.

Listening to the radio

1. Press **F** until radio frequency appears in the display window.
The last received station and "**FM**" appear on the display window.

2. Auto tuning :
Press and hold **TUNING +/-** on the remote control or **KK/▷▷** on the unit for about two seconds until the frequency indication starts to change, then release. Scanning stops when the unit tunes in a station.

Or

Manual tuning :

Press **TUNING +/-** on the remote control or **KK/▷▷** on the unit repeatedly.

3. Adjust the volume by pressing **VOL +/-**.

Presetting the Radio Stations

You can preset 50 stations for FM.

Before tuning, make sure to turn down the volume.

1. Press **F** until radio frequency appears in the display window.
2. Select the desired frequency by pressing **TUNING +/-** on the remote control or **KK/▷▷** on the unit.
3. Press **MEMORY** on the remote control. A preset number will blink in the display window.
4. Press **PRESET ▲/▼** on the remote control to select the preset number you want.
5. Press **MEMORY** on the remote control. The station is stored.
6. Repeat steps 2 to 5 to store other stations.
7. To listen a preset station, press **PRESET ▲/▼** on the remote control.

Deleting all the saved stations


1. Press **DELETE** on the remote control.
"dEL", "ALL" will flash up alternately on the unit display.
2. Press **DELETE** on the remote control to erase all the saved radio stations. "dELETEd ALL " will be displayed on the unit display.

Other Operations

Turn off the sound temporarily

Press  on the remote control to mute your sound.

You can mute your unit, for example, to answer the telephone, the “VOL” will blink on the display window.

To cancel it, press  on the remote control again or change the volume level.

Adjusting Bass level

You can adjust the bass sound level as your preference.

Adjust the bass sound level by pressing **BASS +/-**.

Troubleshooting

General


Problem	Cause & Solution
The unit does not work properly	<ul style="list-style-type: none">• Turn off the power of this unit and the connected external device (Woofer, DVD-player, Amplifier, etc.) and turn them on again.• Disconnect the power cord of this unit and the connected external device (Woofer, DVD-player, Amplifier, etc.) and then try connecting again.• Previous setting may not be saved when device power is shut off.
No Power	<ul style="list-style-type: none">• The power cord is not plugged in. Plug in the power cord.• Check whether electricity failed. Check the condition by operating other electronic devices.
No sound	<ul style="list-style-type: none">• Check whether you select right function. Press function button and check the selected function.• Check to see if the Speakers are connected correctly. Connect speaker cables correctly.
Radio stations cannot be tuned in properly	<ul style="list-style-type: none">• The signal strength of the radio station is too weak. Tune to the station manually.• No stations have been preset or preset stations have been cleared (when tuning by scanning preset channels). Preset some radio stations, see page 18 for details.
The remote control does not work properly	<ul style="list-style-type: none">• The remote control is too far from the unit. Operate the remote control within about 7 m (23 feet).• There is an obstacle in the path of the remote control and the unit. Remove the obstacle.• The batteries in the remote control are exhausted. Replace the batteries with new ones.

General specifications

General	
Power requirements	Refer to the main label on the unit.
Power consumption	Refer to the main label on the unit.
Dimensions (W x H x D)	Approx. 196.0 mm x 239.0 mm x 205.0 mm
Operating temperature	5 °C to 35 °C
Operating humidity	60 %

Inputs	
Analog audio in (AUX IN)	0.6 Vrms (1 kHz, 0 dB), 600 Ω , RCA jack (L, R) x 1
Portable in (PORT. IN)	0.4 Vrms (3.5 mm stereo jack) x 1

Tuner	
FM Tuning Range	87.5 to 108.0 MHz or 87.50 to 108.00 MHz

System	
Frequency Response	40 to 20,000 Hz
Signal-to-noise ratio	More than 75 dB
Dynamic range	More than 80 dB
Bus Power Supply (USB)	5 V  500 mA

Amplifier (RMS Output power)	
Total output	40 W RMS
Front	10 W RMS X 2 (8 Ω at 1 kHz, 10 % THD)
Sub Woofer	20 W RMS X 1 (4 Ω at 1 kHz, 10 % THD)

Front speaker	
Type	1 Way 1 spaker
Impadance	8 Ω
Rated Input Power	10 W RMS
Max. Input Power	20 W RMS
Dimensions (W x H x D)	Approx. 109.0 mm x 140.0 mm x 100.0 mm

- Design and specifications are subject to change without notice.

Trademarks and Licenses



The **Bluetooth**® word mark and logos are registered trademarks owned by the **Bluetooth** SIG, Inc. and any use of such marks by LG Electronics is under license.

Other trademarks and trade names are those of their respective owners.

Maintenance

Handling the Unit

When shipping the unit

Please save the original shipping carton and packing materials. If you need to ship the unit, for maximum protection, re-pack the unit as it was originally packed at the factory.

Keeping the exterior surfaces clean

Do not use volatile liquids such as insecticide spray near the unit. Wiping with strong pressure may damage the surface. Do not leave rubber or plastic products in contact with the unit for a long period of time.

Cleaning the unit

To clean the player, use a soft, dry cloth. If the surfaces are extremely dirty, use a soft cloth lightly moistened with a mild detergent solution. Do not use strong solvents such as alcohol, benzene, or thinner, as these might damage the surface of the unit.

