



OWNER'S MANUAL

Omnidirectional portable speaker

Please read this manual carefully before operating your set and retain it for future reference.

Model

XO3QBK

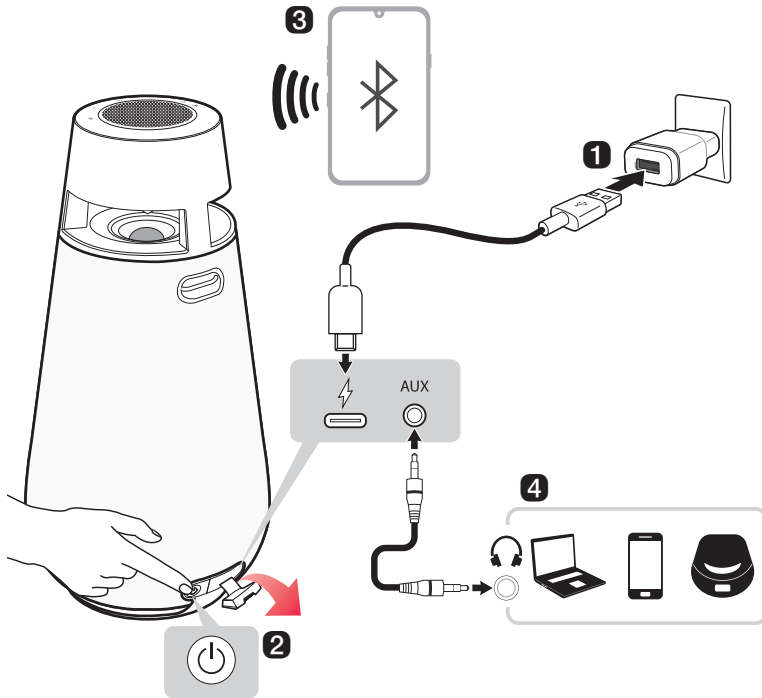
XO3QPK

XO3QBE

Omnidirectional portable speaker

Quick Guide

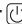

Using Easily in Order



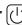
1 Charge the speaker before using it by opening the rear cover and connecting the speaker to an AC adapter (not provided) by using the provided USB (Type C to A) cable.

2 To use this speaker, turn it on by pressing the power  button.

3 Connecting the speaker to a smartphone via Bluetooth (→ See “Connecting Smartphone to the Speaker via Bluetooth” on page 12.)

- 1 Press the **Power**  button to turn on the product. **Bluetooth** LED blinks.
- 2 Tap the **Settings**  button on your smartphone and select **Bluetooth**. Turn on the **Bluetooth** function. (Off > On)
- 3 From the list of smartphone devices, find and tap on “LG-XO3Q(XX).”
- 4 Once the smartphone is connected via **Bluetooth**, the **Bluetooth** LED will turn on. Play a desired track in the music app on your smartphone.

4 Connecting to an External Device (→ See “Connecting via 3.5 mm Stereo Cable” on page 23.)

- 1 Press the **Power**  button to turn on the product.
- 2 Open the back cover of the product and connect the external device to the AUX terminal via a 3.5 mm stereo cable.
- 3 Turn the external device on and start playing.

5 Connecting the LG XBOOM App (→ See “Installing app” on page 17.)

- 1 Find the **LG XBOOM app** on the Google Play or App Store and install it on your smartphone.
- 2 Run the **LG XBOOM app** and use its functions. (EQ, Wireless Party Link, Lighting, Sleep Timer, Setting etc.)

6 Power Saving (→ See “Power Saving Mode” on page 24.)

If there is no playback or button input for 15 minutes, the product turns off automatically. On the **LG XBOOM app**, you can enable or disable [Auto Power Management].

Table of Contents

Omnidirectional portable speaker Quick Guide

- 2 Using Easily in Order

Exploring the Product

- 5 Top
- 7 Back

Charge

- 10 Charging the Battery
- 11 Checking Battery Status

Connecting to Bluetooth

- 12 Connecting Smartphone to the Speaker via Bluetooth
- 15 Connecting with two smartphones

Connecting to the LG XBOOM App

- 17 Installing app
- 19 Using the Wireless Party Link

Connecting to an External Device

- 23 Connecting via 3.5 mm Stereo Cable

Additional Functions

- 24 Initializing the Software
- 24 Power Saving Mode
- 25 Using Auto power - on.
- 25 Voice feedback function

Safety Precautions

- 26 Safety and Regulatory

Things to Check before Reporting Malfunction

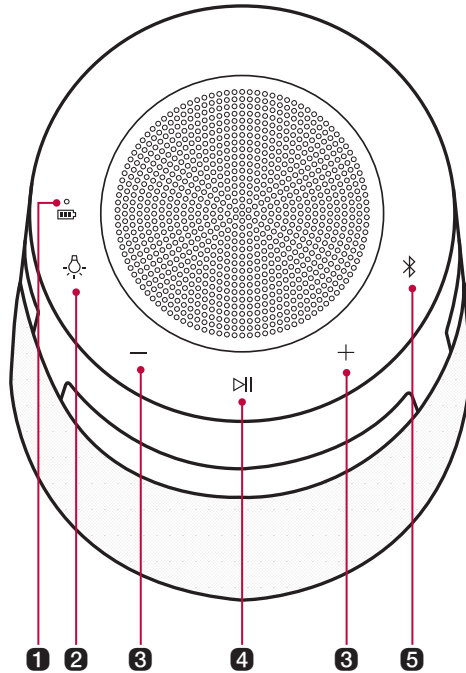
- 29 Troubleshooting

Appendix

- 30 Product Specifications
- 31 Registered Trademarks and Licenses
- 32 Handling the Product

Exploring the Product

Top



1 Battery LED

Please check the battery charging level and battery status. (→ See “Checking Battery Status” on page 11.)

2 Mood lighting

Press the button to select the desired mood lighting.

- Mood lighting: Ambient / Nature / Party / Off

3 Volume

It controls the volume level.

4 Play/Pause

Press the button to operate the product.

- Play/Pause: Press the button.
 - Moving to the next music: Press the button twice quickly.
 - Moving to the previous music: Press the button three times quickly.
 - Mute: Press the button in AUX function.
-




5 Bluetooth

You can change the **Bluetooth** settings.

- Connecting an additional smartphone: Press and hold the button for 2 seconds. (→ See “Connecting with two smartphones” on page 15.)
- Changing from AUX to **Bluetooth**: Press the button.
- Resetting **Bluetooth**: Press and hold the button for 7 seconds. (→ See “Initializing the Software” on page 24.)

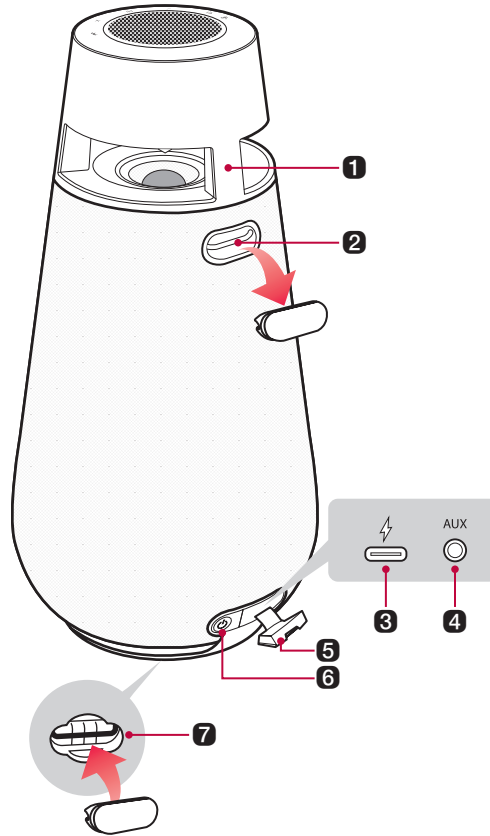
Bluetooth LED

Indicates the **Bluetooth** connection status.

-  Blinks in white: Ready for **Bluetooth** device connection.
-  Turns on in white: Connected to a **Bluetooth** device.
-  Off: Aux cable connected. / This speaker is connected to the other speaker via Wireless Party Link.

CAUTION

- Place the product at a safe distance from the child's reach. Otherwise it may result in the product falling down and causing personal injury and/or property damage.
 - Be careful that the speaker does not fall down. Otherwise it may result in the speaker malfunctioning and causing personal injury and/ or property damage.
-



1 Poles

This product can be secured to wrap around this pole with a security cable lock.

2 Strap hole

You can carry this product by attaching the strap to the strap hole.

3 ⚡ (DC IN)

Plug in the provided USB (Type C to A) cable to charge the speaker battery.

4 AUX

You can connect the product to a portable external device with a 3.5 mm stereo cable and start enjoying music.


5 Back Cover

Make sure to fully close the back cover after use.

- Ingress Protection: IP54
 - Solid: Protected against dust
 - Liquid: Protected against splashing water.
-

6 Power 

It turns the product on/off.

- If you press and hold the **Power**  button for 2 seconds with product turned on, you can see the battery status on the battery LED.

7 Strap hole cover holder

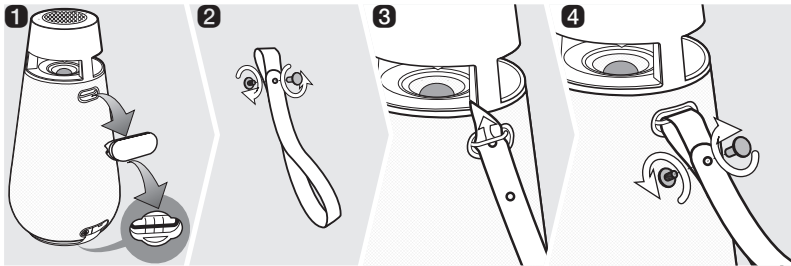
When attaching the strap to the strap hole, keep the strap hole cover on the bottom of the speaker to avoid losing it.

- Use it only to keep the strap cover. Do not attach the strap.
-

How to attach the strap



- 1 Remove the strap hole cover from the strap hole and keep the cover on the bottom of the speaker.
- 2 Loosen the screw and remove it from the strap.
- 3 Put the strap in the hole.
- 4 Align the strap with the screw hole and tighten the screw.



⚠ CAUTION

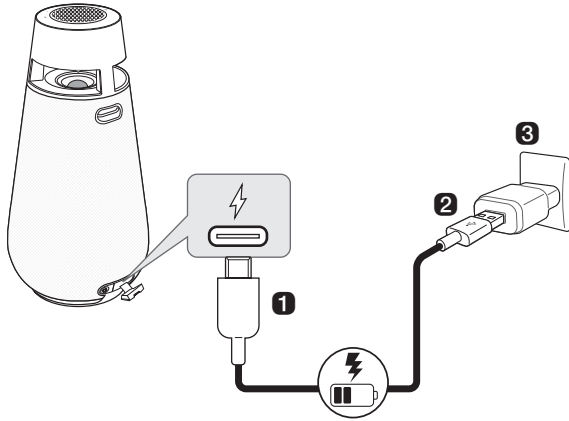
- Be careful not to expose the product to sunlight for a long time to prevent discolouration.
 - Be careful as the speaker may be damaged if you inadvertently press the woofer within the reach of your hand.
 - Be careful not to drop the speaker. Mechanical shock may cause deterioration of water-resistant and dust-resistant performance.
-

Charge

| Charging the Battery

This product has a built-in battery. Make sure to charge the battery sufficiently before use.

- 1 Open the back cover and connect the provided USB cable to (⚡) (DC IN) port of the speaker.
- 2 Connect the other end of the USB cable to the AC adapter (not provided).
- 3 Plug the AC adapter into an AC outlet.



✔ Note

- It takes approximately 5 hours to fully charge the battery. The charging time may differ depending on the battery status or the product operation status.
- Once the battery is fully charged, you can use the speaker for approximately 24 hours.
 - Operation time may vary depending on the battery or operation status.



⚠ CAUTION

- AC adapter is not supplied. It is recommended that you use the 5 V AC adapter approved by LG Electronics Inc. (more than 2 A) with this speaker because of danger of explosion. If you do not use the recommended adapter, charging is unavailable or charging time may differ.

Checking Battery Status

Charging Status

You can see the charging status in the battery LED once the product battery starts charging.

Battery LED	LED Status / Battery Status
	Turns on in green. / Charging is complete.
	It is red. / Charging is in progress.




✔ Note

- Playing tracks while charging may lengthen the charging time.
- When the speaker's battery is fully charged with the power off, the battery LED lights up green for 15 seconds and then off.

Use Status

When the product is turned on, the battery status is displayed on the battery LED for 3 seconds.

If you press and hold the **Power** (⏻) button for 2 seconds with the product on, you can see the battery LED for 3 seconds depending on the battery status.

Battery LED	LED Status / Battery Status
	Turns on in green. / The battery level is above 70 %.
	Turns on in amber. / The remaining battery level is 70 to 10 %.
	It blinks red continuously and you can hear a notification sound once. / The battery level is below 10 %, and the battery needs to be charged.

✔ Note

- The battery status cannot be checked while charging.

Connecting to Bluetooth

Connecting Smartphone to the Speaker via Bluetooth

You can play music files stored on a **Bluetooth** device, or run music apps to enjoy music using this product.

Please check the following first.

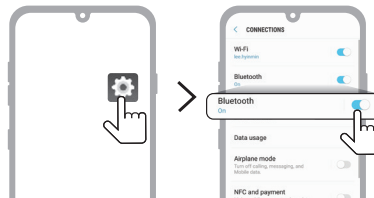
- The following are the **Bluetooth** specifications of the product.
 - **Bluetooth** version: 5.1
 - Codec: SBC, AAC
- How to connect the device to the product may differ depending on the type and model of the **Bluetooth** device. For information on how to connect the product, refer to the user manual of the **Bluetooth** device to be connected.

Select the [**Bluetooth**] menu on the smartphone's **Settings** screen. The menu access method may differ depending on the smartphone manufacturer and model.

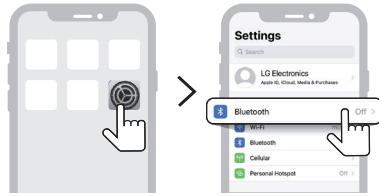
- 1 Press the **Power** (🔌) button on the speaker to turn it on. **Bluetooth** LED blinks.



- 2 Tap the Setting (⚙️) / (⚙️) button on your smartphone and select **Bluetooth**.



(Android Phone)



(iPhone)

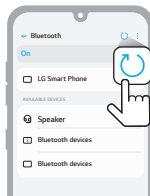
- 3 Turn on the **Bluetooth** function. (Off > On)
- 4 You will see a list of connectable devices on the smartphone screen. Find and tap the name "LG-XO3Q(XX)";



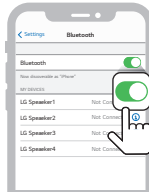
- 5 Once the speaker and the smartphone are connected via **Bluetooth**, **Bluetooth** LED will turn on with the sound.



- 6 If LG-XO3Q(XX) does not appear on the list, tap on the **Refresh** (refresh icon) on an Android phone or restart **Bluetooth** on an iPhone.

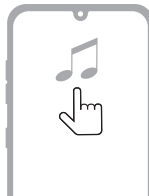


(Android Phone)



(iPhone)

-
- 7 Select and play a track on the smartphone.




✓ **Note**

- The closer the **Bluetooth** device is to the speaker, the better connection you will get.
 - If no **Bluetooth** device is connected to the speaker, the **Bluetooth** LED blink. Connect the device again.
 - When using **Bluetooth**, adjust the volume of the **Bluetooth** device to an appropriate level.
 - XX are the last two digits of the **Bluetooth** address. An example would be "LG-X03Q(08)."
 - When the product is charging, if you try to connect to the product via the **Bluetooth** device with a connection history, the product will automatically turn on and connect to the **Bluetooth** device. You can control this function in the **LG XBOOM app**. (→ See "Using Auto power - on." on page 25.)
-

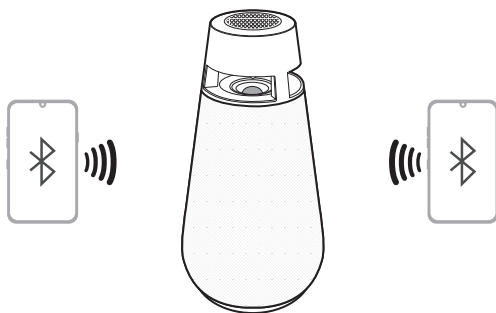
Connecting with two smartphones

Pairing (Connecting) Multiple Phones

- 1 Connect the product and a smartphone first. (→ See “Connecting Smartphone to the Speaker via Bluetooth” on page 12.)
- 2 When the **Bluetooth** device and speaker are connected, press and hold **Bluetooth**  button for 2 seconds. Then **Bluetooth** LED blinks with the sound. The speaker is changed to multi phone pairing mode.



- 3 Connect an additional smartphone to the product within 60 seconds. (→ See “Connecting Smartphone to the Speaker via Bluetooth” on page 12.)



- 4 Once both the **Bluetooth** devices are connected to the speaker, the **Bluetooth** LED turns on.



✔ **Note**

- Multi-phone pairing (connecting) connects up to two smartphones.
 - Even if two smartphones are connected, the product plays music only on one smartphone. If the music stops on the currently played smartphone, it can be played on another smartphone.
 - If you turn the speaker off and back on while two **Bluetooth** devices are connected, only the device connected later is automatically connected.
 - Only smartphones support multi phone pairing (connection). (Depending on specifications of the connected smartphones, multi phone pairing (connection) may not be connected.)
-

Connecting to the LG XBOOM App

Installing app

Use the various functions of the speaker on the **LG XBOOM app**.

To install the **LG XBOOM app**, scan the QR code with an app or install **LG XBOOM app** on the Google Play or App Store.

Please check the following first.

- The **LG XBOOM app** is available in the versions listed below.
 - Android OS: Version 6.0 or higher
 - iOS OS: Version 12.0 or higher
 - Minimum supported versions for each OS may change later.

Downloading with a QR code

- 1 Scan the QR code with a QR code scan app.
- 2 You will be directed to the page where you can download the **LG XBOOM app**. Tap the app to install it.



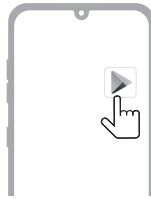
(Android Phone OS)



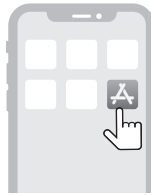
(iPhone OS)

Downloading in Google Play or App Store

- 1 Find the **LG XBOOM app** on the Google Play or App Store and install it on your smartphone.



(Android™ Phone)



(iPhone)

-
- 2 Connect the smartphone to the speaker via **Bluetooth**. (→ See “Connecting Smartphone to the Speaker via Bluetooth” on page 12.)
 - 3 Open the **LG XBOOM app** installed on the smartphone.
 - 4 Follow the instructions on the **LG XBOOM app**. Read and agree to the Terms of Service, Notice Windows, Access Settings, etc.
 - 5 Start using the various functions on the **LG XBOOM app**.

✓ Note

- The menu access method may differ depending on the smartphone manufacturer and OS.
 - Google, Android, and Google Play are trademarks of Google LLC.
-

Using the Wireless Party Link

You can connect multiple speakers in the **LG XBOOM app**'s Wireless Party Link. There are two ways for using the Wireless Party Link: Dual mode and Multi mode.

Dual mode

Wireless Party Link Dual mode lets you enjoy stereo sound with two same model speakers.

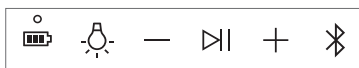
Please check the following first.

- The two speakers of the same model are needed. (e.g. X03Q and X03Q)

- 1 Connect the speaker and a smartphone first. (→ See “Connecting Smartphone to the Speaker via Bluetooth” on page 12.)
- 2 Tap the Wireless Party Link in the **LG XBOOM app**.
- 3 Tap the Dual mode and connect another speaker following the instructions.
- 4 You can see the Dual mode LED on the speakers.
 - Main speaker: **Bluetooth** LED turns on and output Left channel sound.
 - Other speaker: **Bluetooth** LED turns off and output Right channel sound.




(Main speaker)



(Other speaker)

Connecting to your TV via Dual mode

- 1 Follow the aforementioned instructions to connect two speakers via Dual mode. (→ See “Dual mode” on page 19.)
- 2 Press and hold the **Bluetooth**  button on the main speaker for 2 seconds. Then **Bluetooth** LED will blink for 60 seconds.
- 3 In the TV settings, find and select the main speaker within 60 seconds. You can listen to the TV sound through two speakers.

✓ Note

- When using in dual mode with a TV, you cannot control the speakers with the **LG XBOOM app**.

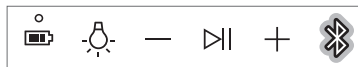
Multi mode

Wireless Party Link Multi mode lets you enjoy more powerful sound with multiple speakers.

Please check the following first.

- You can connect multiple LG **Bluetooth** speakers. (XG9Q/XG7Q/XG5Q and XO3Q)

- 1 Connect the speaker and a smartphone first. (→ See “Connecting Smartphone to the Speaker via Bluetooth” on page 12.)
- 2 Tap the Wireless Party Link in the **LG XBOOM app**.
- 3 Tap the Multi mode and toggle the function on.
- 4 Search for nearby speakers and select the speakers you want to connect to.
- 5 You can see the Multi mode LED on the speakers.
 - Main speaker: **Bluetooth** LED turns on and the speaker outputs sound.
 - Other speakers: **Bluetooth** LED turns off and speakers output sound in sync with the main speaker.




(Main speaker)



(Other speakers)

✔ **Note**

- The Main speaker connects only one **Bluetooth** device.
 - When using Dual/Multi mode to connect multiple speakers, the multi phone pairing connection is not supported.
 - When you turn the speakers off and on again, the speakers do not automatically reconnect.
 - If you connect a 3.5 mm stereo cable in Dual/Multi mode, Dual/Multi mode is canceled and then change to AUX function.
 - When you connect multiple speakers in Dual/Multi mode in AUX function, it will change to **Bluetooth** function.
 - To change the connected **Bluetooth** device in Dual/Multi mode, press and hold the **Bluetooth**  button for 2 seconds. When you hear a beep sound and the **Bluetooth** LED blinks, connect to the desired **Bluetooth** device.
 - Keep the distance between the speakers as close as possible each other.
 - Depending on the network environment, this function may not work well.
 - The screen of a device such as a TV and the sound from the speaker may not match.
 - When multiple speakers are connected in Multi mode, volume and EQ linkage between the Main speaker and Other speakers is not available.
-

Interworking multiple speakers

This speaker interworks with other LG **Bluetooth** speakers such as XG9Q/XG7Q/XG5Q and X03Q.

Dual mode	Same model (e.g. X03Q/X03Q) Main/Other
Volume	0
EQ	0
Lighting	0
Auto Power Management	0
Sleep Timer	0

Multi mode	Same series (e.g. X03Q/X03Q) Main/Other
Lighting	0
Auto Power Management	0
Sleep Timer	0

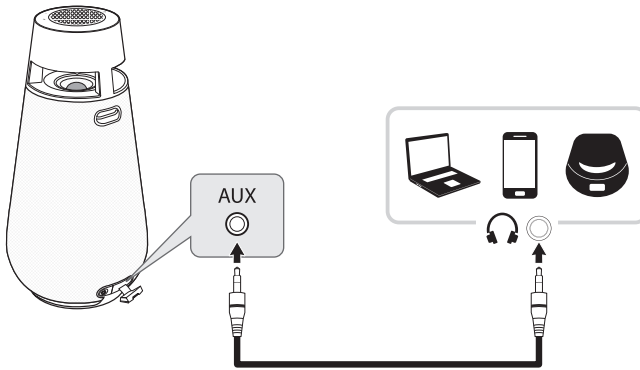
Multi mode	Other series (e.g. XG9Q/XG7Q/XG5Q/X03Q) Main/Other
Lighting	X
Auto Power Management	X
Sleep Timer	0

Connecting to an External Device

Connecting via 3.5 mm Stereo Cable

You can connect the product and various external devices via a 3.5 mm stereo cable to enjoy music.

- 1 Press the **Power**  button to turn on the product.



- 2 Open the back cover of the product and connect the external device to the AUX terminal via a 3.5 mm stereo cable.
- 3 Music played on the connected external device will play on this product.


✔ Note

- Prepare a 3.5 mm stereo cable. If you do not have a 3.5 mm stereo cable, you can purchase one separately.
-

Additional Functions

Initializing the Software

It initializes the **Bluetooth** connection and settings of the product.

- 1 Press and hold the **Bluetooth**  button on the product for 7 seconds or longer.
- 2 All white LEDs will blink four times to initialize the **Bluetooth** connection and all settings.

✔ Note


- To use the **Bluetooth** function after initializing the product, connect the **Bluetooth** device again.
-

Power Saving Mode

If there is no playback or button input for 15 minutes, the product turns off automatically. You can enable or disable the power saving mode as follows.

Function	How to Use
Enable	Set [Auto Power Management] to [Enable] in the LG XBOOM app .
Disable	Set [Auto Power Management] to [Disable] in the LG XBOOM app .

✔ Note

- When the power saving function is off, the product turns off only when the **Power**  button is pressed or the battery is discharged.
-

Using Auto power - on.

You can easily use the speaker with your **Bluetooth** device.

Please check the following first.

- The speaker has a history of **Bluetooth** connection with the **Bluetooth** device.
- The speaker is charging and the power is off.

- 1 Tap the Setting button on your **Bluetooth** device and select **Bluetooth**.
- 2 Turn on the **Bluetooth** function. (Off > On)
- 3 You will see a list of connectable devices on the **Bluetooth** device screen. Find and tap the name "LG-XO3Q(XX)".
- 4 The speaker power is turned on automatically. Then the **Bluetooth** device and the speaker are connected automatically.

✔ Note

- You can turn this function on and off with the **LG XBOOM app** only.
-

Voice feedback function

When you select a function or sound, the current status of the product is guided by voice. (English voice only)

You can turn this function on and off with the **LG XBOOM app**.

Safety Precautions

| Safety and Regulatory



CAUTION: TO REDUCE THE RISK OF ELECTRIC SHOCK DO NOT REMOVE COVER (OR BACK). NO USER-SERVICEABLE PARTS INSIDE. REFER SERVICING TO QUALIFIED SERVICE PERSONNEL.



This lightning flash with arrowhead symbol within an equilateral triangle is intended to alert the user to the presence of uninsulated dangerous voltage within the product's enclosure that may be of sufficient magnitude to constitute a risk of electric shock to persons.



The exclamation point within an equilateral triangle is intended to alert the user to the presence of important operating and maintenance (servicing) instructions in the literature accompanying the product.

WARNING:

- TO PREVENT FIRE OR ELECTRIC SHOCK HAZARD, DO NOT EXPOSE THIS PRODUCT TO RAIN OR MOISTURE.
- Do not install this equipment in a confined space such as a book case or similar unit.

CAUTION:

- Do not use high voltage products around this product (e.g., electrical swatter). This product may malfunction due to electrical shock.
- No naked flame sources, such as lighted candles, should be placed on the apparatus.
- Do not block any ventilation openings. Install in accordance with the manufacturer's instructions. Slots and openings in the cabinet are provided for ventilation and to ensure reliable operation of the product and to protect it from over heating. The openings should never be blocked by placing the product on a bed, sofa, rug or other similar surface. This product shall not be placed in a built-in installation such as a bookcase or rack unless proper ventilation is provided or the manufacturer's instruction has been adhered to.
- The apparatus should not be exposed to water (dripping or splashing) and no objects filled with liquids, such as vases, should be placed on the apparatus.
- For safety marking information including product identification and supply ratings, please refer to the main label on the bottom or the other surface of the product.
- Be careful to make sure children do not put their hands or any objects into the speaker duct*.
 - * speaker duct: A hole for plentiful bass sound on speaker cabinet. (enclosure)

CAUTION concerning the Power Cord

The Power Plug is the disconnecting device. In case of an emergency, the Power Plug must remain readily accessible.

Check the specification page of this owner's manual to be certain of the current requirements.

Do not overload wall outlets. Overloaded wall outlets, loose or damaged wall outlets, extension cords, frayed power cords, or damaged or cracked wire insulation are dangerous. Any of these conditions could result in electric shock or fire. Periodically examine the cord of your device, and if its appearance indicates damage or deterioration, unplug it, discontinue use of the device, and have the cord replaced with an exact replacement part by an authorized service center.

Protect the power cord from physical or mechanical abuse, such as being twisted, kinked, pinched, closed in a door, or walked upon. Pay particular attention to plugs, wall outlets, and the point where the cord exits the device.

CAUTION when using this product in environments of low humidity

- It may cause static electricity in environments of low humidity.
- To prevent static electricity, it is recommended to touch metal objects before using this product.

For models using a battery:

This device is equipped with a portable battery or accumulator.

CAUTION: Risk of fire or explosion if the battery is replaced by an incorrect type.

For models using a built-in battery:

Do not store or transport at pressures lower than 11.6 kPa (0.116 bar) and at above 15,000 m (9.32 miles) altitude.

- replacement of a battery with an incorrect type that can defeat a safeguard (for example, in the case of some lithium battery types);
- disposal of a battery into fire or a hot oven, or mechanically crushing or cutting of a battery, that can result in an explosion;
- leaving a battery in an extremely high temperature surrounding environment that can result in an explosion or the leakage of flammable liquid or gas;
- a battery subjected to extremely low air pressure that may result in an explosion or the leakage of flammable liquid or gas.

Symbols

~ : Alternating current (AC).

— : Direct current (DC).

⊞ : This is a class II equipment.

⏻ : Standby power state.

⏻ : The power is turned on.

⚡ : Danger voltage.

Things to Check before Reporting Malfunction


Troubleshooting

If you experience the following symptoms while using the product, please check them again. They may not be malfunctions.

Symptom	Cause and Solution
Power is not supplied.	<ul style="list-style-type: none">The battery is discharged. Recharge the battery.<ul style="list-style-type: none">Charge the product by connecting the power cord to the power input terminal.
There is no sound or the sound is distorted.	<ul style="list-style-type: none">The volume of product or the connected Bluetooth device may be set to the minimum. Adjust the volume of product or the connected Bluetooth device to the appropriate level.Using an external device with the maximized sound may distort the sound. Lower the volume of the external device to use.
Bluetooth connection failed.	<ul style="list-style-type: none">Check if the Bluetooth setting is enabled.Turn off the Bluetooth setting and on again on the Bluetooth device.Make sure there are no obstacles between product and the Bluetooth device.Bluetooth pairing (connecting) may fail depending on the Bluetooth device type and the surrounding environment.
The product does not operate normally.	<ul style="list-style-type: none">Battery discharge may cause the Bluetooth information to be deleted. If the product's power supply is blocked, previous settings may not be saved.Use this product in a place where the temperature and humidity are not too high or low. If the problem continues, contact LG Electronics' Customer Service Center.If a problem occurs while charging the battery of the product, the battery LED alternates between red and amber and charging stops. Unplug the adapter from the outlet.Charging the product with a multi-charging cable (3 in 1, 5 in 1, etc.) may damage the product. Charge the product with the provided USB (Type C to A) cable.
The above solutions do not work.	<ul style="list-style-type: none">Initializes the settings of the product. Press and hold the Bluetooth (⌘) button on the product for 7 seconds or longer. (→ See "Initializing the Software" on page 24.)

Appendix

Product Specifications

General	
Power supply	5 V  2 A (AC adapter) Built-in rechargeable battery
Power consumption	Refer to the main label.
Dimensions (W x H x D)	Approx. 165.0 mm x 327.0 mm x 165.0 mm (6.5 inch x 12.9 inch x 6.5 inch)
Temperature	5 °C - 35 °C (41 °F - 95 °F)
Humidity	5 % - 60 % RH
Ingress protection	IP54

Input	
AUX	1.0 Vrms (3.5 mm stereo terminal) × 1

Battery	
Battery capacity	Li-ion 7.4 V, 3900 mAh
Operating time	24 hours Operation time may vary depending on the battery or operation status.
Charging time	5 hours Charging time may vary depending on the battery or operation status.

- Design and specifications are subject to change without notice.

Registered Trademarks and Licenses

All trademarks and trade names are owned by their respective owners.



The **Bluetooth**® word mark and logos are registered trademarks owned by the **Bluetooth** SIG, Inc. and any use of such marks by LG Electronics is under license.

Other trademarks and trade names are those of their respective owners.



“Made for iPhone,” and “Made for iPod” mean that an electronic accessory has been designed to connect specifically to iPhone, or iPod, respectively, and has been certified by the developer to meet Apple performance standards. Apple is not responsible for the operation of this device or its compliance with safety and regulatory standards. Please note that the use of this accessory with iPhone or iPod may affect wireless performance.

The system is compatible with the latest iOS. Depending on your iPhone/iPod software version, you may not control your iPhone/iPod from the unit.



| Handling the Product

When shipping the Product

Please save the original shipping carton and packing materials. If you need to ship the product, for maximum protection, re-pack the product as it was originally packed at the factory.

Keeping the exterior surfaces clean

- Do not use volatile liquids such as insecticide spray near the product.
- Wiping with strong pressure may damage the surface.
- Do not leave rubber or plastic products in contact with the product for a long period of time.

Cleaning the product

To clean the product, use a soft, dry cloth. If the surfaces are extremely dirty, use a soft cloth lightly moistened with a mild detergent solution. Do not use strong solvents such as alcohol, benzene, or thinner, as these might damage the surface of the product.

