

SIMPLE MANUAL

Wireless Sound Bar

Please read this manual carefully before operating your set and retain it for future reference.

To view the instructions of advanced features, visit <http://www.lg.com> and then download Owner's Manual. Some of the content in this manual may differ from your unit.

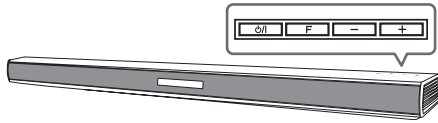
MODEL
SJ4R





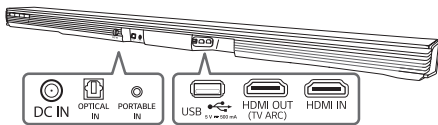
Front Panel

The buttons are located on the rear.



- Standby / On
- Selects Function
- Adjusts Volume

Rear Panel



- DC IN Connect to the AC adapter
- OPTICAL IN Connect to an Optical device
- PORTABLE IN Connect to a Portable device
- USB Connect to a USB device
- HDMI OUT (TV ARC) Connect to a TV
- HDMI IN Connect to HDMI out on a device

1 Subwoofer Connection

Place the wireless subwoofer near the speaker and follow steps below.

- 1 Connect the power cord of wireless subwoofer and sound bar to the outlet.
- 2 Turn on the main unit :
The sound bar and wireless subwoofer will be **automatically** connected. The subwoofer's green LED turns on.

Subwoofer Connection Manually

If the subwoofer does not make sound, try to connect manually.

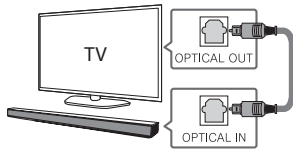
- 1 Press **Pairing** button on the rear of the wireless subwoofer.
 - The green LED on the rear of wireless subwoofer blinks quickly.
- 2 Turn on the main unit.
- 3 Pairing is completed.
 - The green LED on the rear of wireless subwoofer turns on.

Keep the sound bar and the subwoofer away from the device (ex. wireless router, microwave oven, etc.) over 1 m to prevent wireless interference.

Connect with the Sound Bar and TV using Optical (A) or HDMI ARC (B).

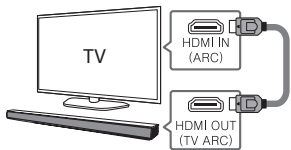
A Optical Connection

- 1 Connect the sound bar to the TV using Optical cable.
- 2 Set up [External Speaker (Optical)] on your TV setting menu.



B HDMI(ARC) Connection

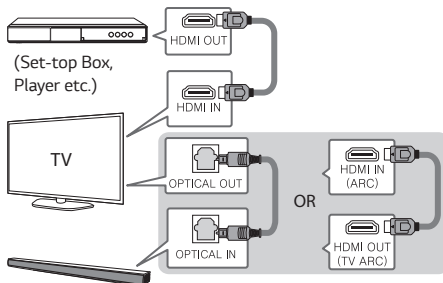
- 1 Connect the sound bar to the TV using HDMI cable.
- 2 Set up [External Speaker (HDMI ARC)] on your TV setting menu.



- HDMI connection is unavailable if your TV does not support HDMI ARC.
- If this unit is connected by OPTICAL and ARC at the same time, the ARC signal is a high priority.

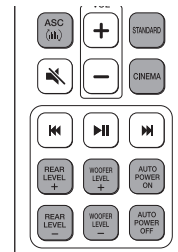
Additional Device Connection

- 1 Connect to the external device as follows.



- 2 Set the input source by pressing F on the remote control or unit repeatedly.

Remote control



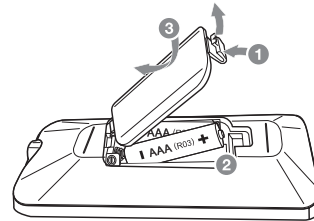
ASC/STANDARD/CINEMA: Selects the sound effect.

REAR LEVEL +/-: Adjusts the volume level of rear speakers. (For rear speakers)

WOOFER LEVEL +/-: Adjusts the volume level of subwoofer.



AUTO POWER ON/OFF: Automatically turns on by an input source.

Replacement of battery



Additional Information

Specification

Power consumption	Refer to the main label.
	Networked standby : 1.5 W (If all network ports are activated.)
AC adapter	<ul style="list-style-type: none"> • Model : DA-38A25 • Manufacturer : Asian Power Devices Inc. • Input : 100 - 240 V ~ 50 - 60 Hz 1.2 A • Output : 25 V  1.52 A
Dimensions (W x H x D)	Approx. 890 mm x 55 mm x 85 mm With foot
Bus Power Supply (USB)	5 V  500 mA
Amplifier (Total RMS Output power)	420 W RMS

Design and specifications are subject to change without notice.

How to disconnect the wireless network connection or the wireless device

Set up the AUTO POWER ON/OFF function to off and turn off the unit.



Rear Surround sound

Wireless Rear Speakers Kit included for real surround sound.(SPJ4-S)

OPEN SOURCE SOFTWARE NOTICE INFORMATION

To obtain the source code under GPL, LGPL, MPL, and other open source licenses, that is contained in this product, please visit <http://opensource.lge.com>.

In addition to the source code, all referred license terms, warranty disclaimers and copyright notices are available for download.

LG Electronics will also provide open source code to you on CD-ROM for a charge covering the cost of performing such distribution (such as the cost of media, shipping and handling) upon email request to opensource@lge.com. This offer is valid for three (3) years from the date on which you purchased the product.

Declaration of Conformity



Hereby, LG Electronics declares that the radio equipment type Wireless Sound Bar is in compliance with Directive 2014/53/EU. The full text of the EU declaration of conformity is available at the following internet address:

<http://www.lg.com/global/support/cedoc/cedoc#>

For consideration of the user, this device should be installed and operated with a minimum distance of 20 cm between the device and the body.

Frequency range	Output power (Max.)
2402 to 2480 MHz	10 dBm
5730 to 5821 MHz	13 dBm



SIMPLE MANUAL

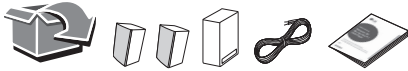
Wireless Rear Speakers Kit

Please read this manual carefully before operating your set and retain it for future reference.

To view the instructions of advanced features, visit <http://www.lg.com> and then download Owner's Manual. Some of the content in this manual may differ from your unit.

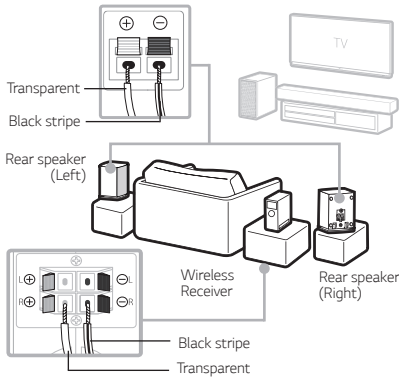
MODEL
SPJ4-S





1 Rear Speakers Connection

Speaker design and connection method may be different according to models.



- 1 Connect the speaker cables to rear speakers correctly.
- 2 Connect the Wireless Receiver and the rear speakers (Grey: right, Blue: left) with the speaker cables.
- 3 Turn on the Surround function to enjoy surround sound.

2 Wireless Receiver Connection

- 1 Connect the power cord of wireless receiver to the outlet.
- 2 Turn on the unit: The unit and wireless receiver will be **automatically** connected. The receiver's yellow - green LED turns on.

Wireless Receiver Connection Manually

If the rear speakers do not make sound, try to connect manually.

- 1 Press **PAIRING** button on the rear of the wireless receiver.
 - The yellow - green LED on the wireless receiver blinks quickly.
- 2 Turn on the main unit.
- 3 Pairing is completed.
 - The yellow - green LED on the wireless receiver turns on.

Surround Sound On/Off

When you turn on surround function, you can enjoy magnificent surround sound for all the input sound source with rear speakers.

!
The initial setting for the surround function is OFF, turn the surround function ON to use it.

SJ4R/SJ4Y

Surround On: Press and hold **REAR LEVEL +** button on the remote control about 2 seconds.

Surround Off: Press and hold **REAR LEVEL -** button on the remote control about 2 seconds.

SJ5Y

Surround On: Press and hold **AUTO VOL** button on the remote control about 2 seconds. and then press **AUTO VOL** button repeatedly to select ON - SURROUND in the display window.

Surround Off: Press and hold **AUTO VOL** button on the remote control about 2 seconds. and then press **AUTO VOL** button repeatedly to select OFF - SURROUND in the display window.

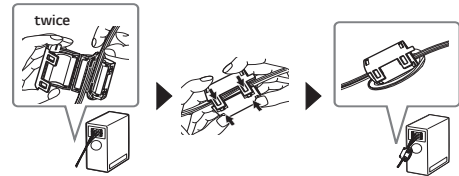
Additional Information

Specification of Wireless receiver

Power requirement	Refer to the main label on the wireless receiver.
Power consumption	Refer to the main label on the wireless receiver.
Dimensions (W x H x D)	Approx. 60 mm x 220 mm x 175 mm

Design and specifications are subject to change without notice.

About Ferrite Core (Optional)



Declaration of Conformity



Hereby, LG Electronics declares that the radio equipment type RECEIVER is in compliance with Directive 2014/53/EU. The full text of the EU declaration of conformity is available at the following internet address:

<http://www.lg.com/global/support/cedoc/cedoc#>

For consideration of the user, this device should be installed and operated with a minimum distance of 20 cm between the device and the body.

Frequency range	Output power (Max.)
5730 to 5821 MHz	13 dBm

