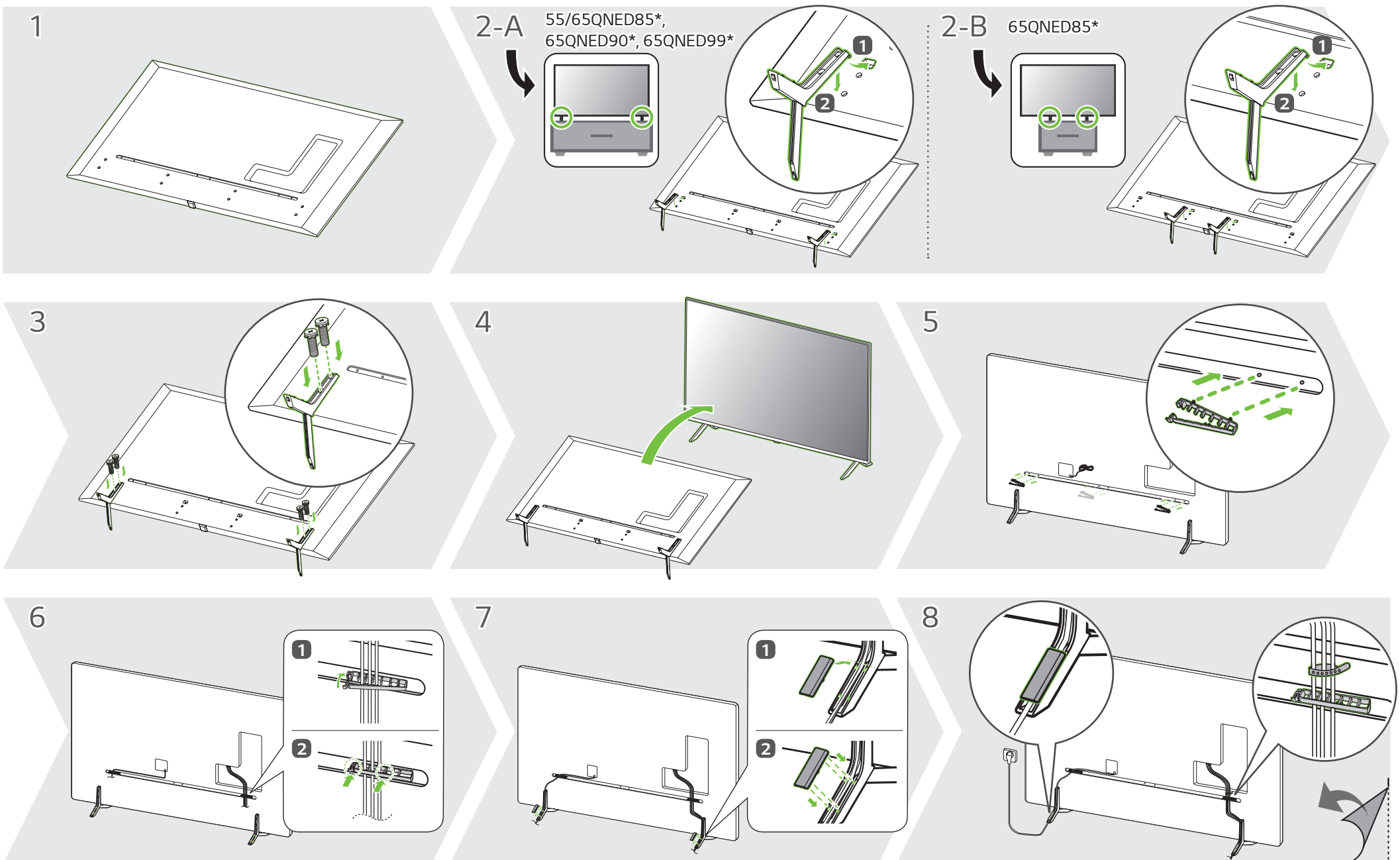
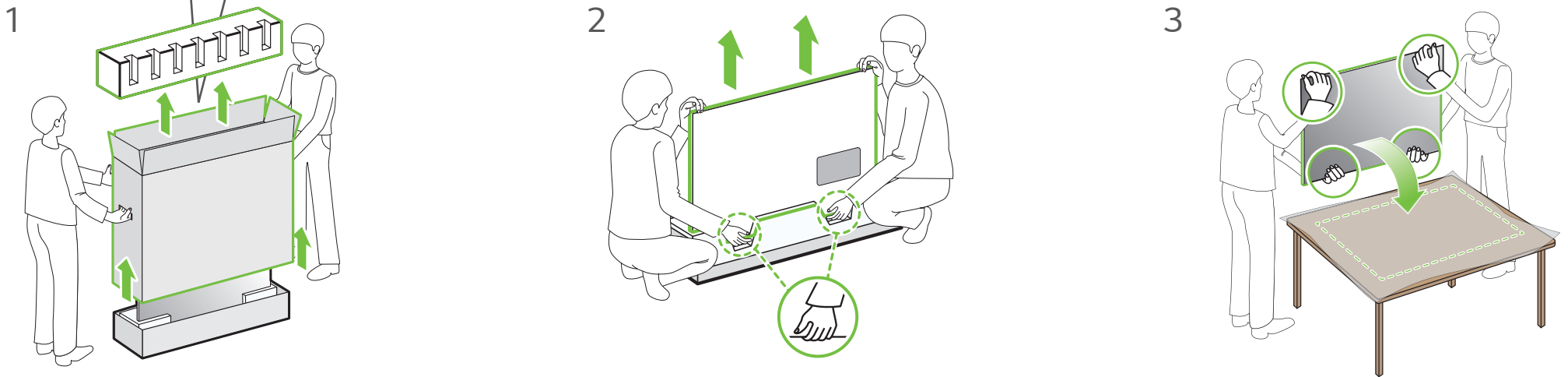
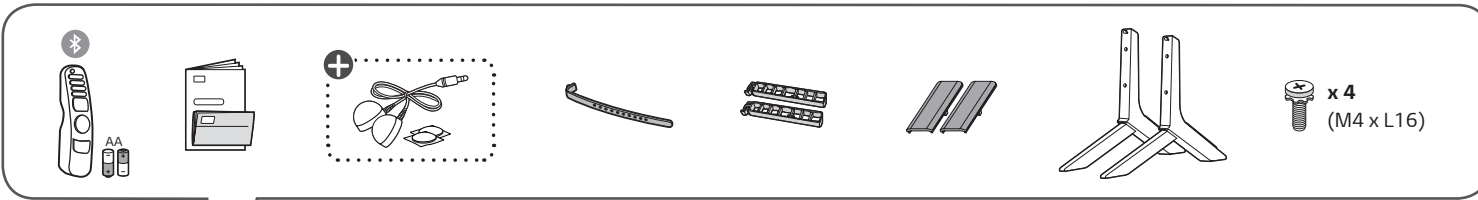
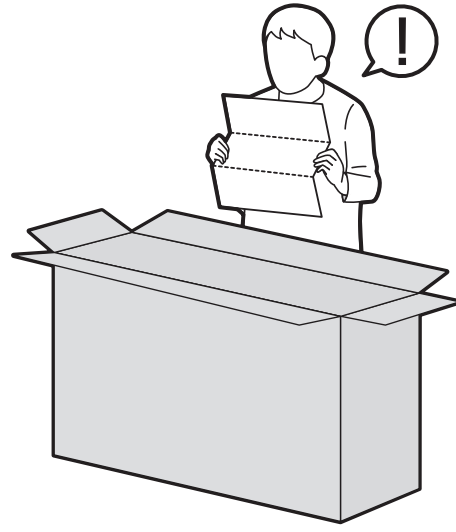
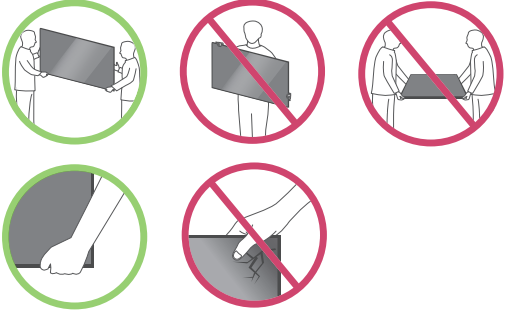
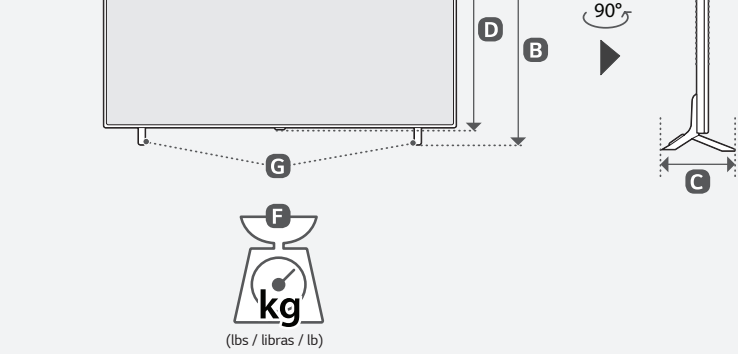
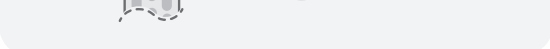
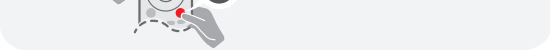
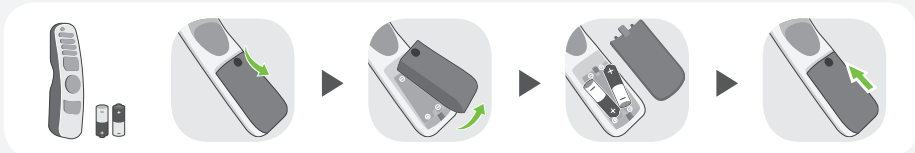
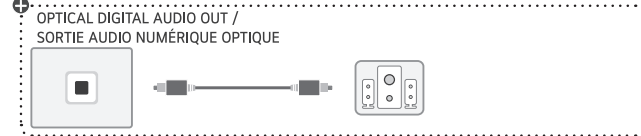
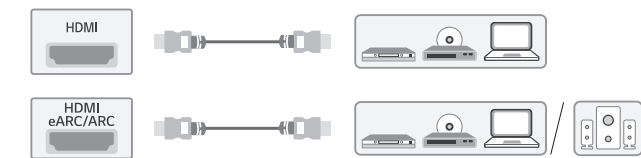
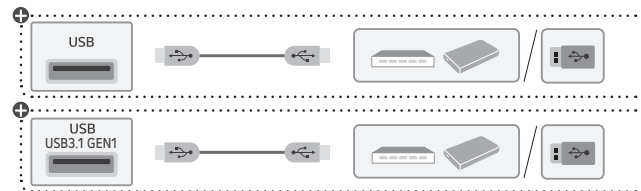
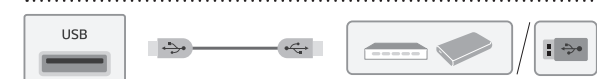
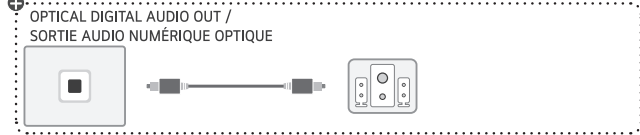
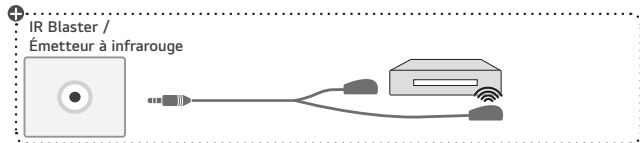


55QNED85AQA 65QNED85AQA 65QNED90UQA  
55QNED85UQA 65QNED85UQA 65QNED99UQA

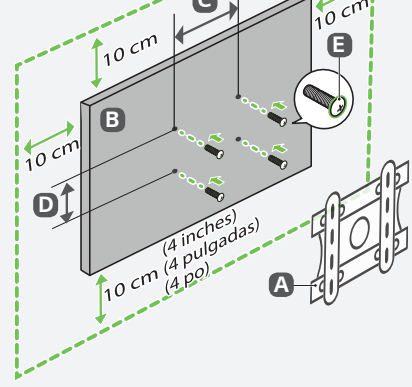




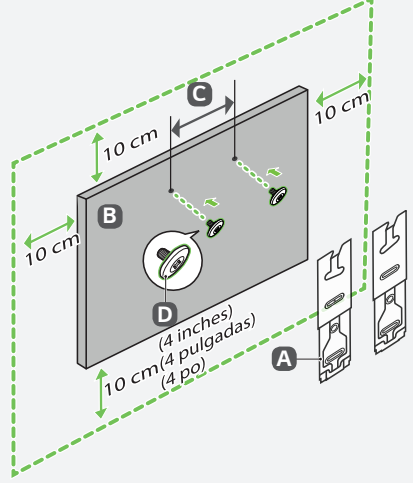
**A, B, C, D, E** : mm (inches / pulgadas / po)  
**F, G** : kg (lbs / libras / lb)

MODELS MODELOS MODÈLES	A		B		C		D		E		F		F-G		Power consumption
	Consumo de potencia		Consumo de potencia		Consumo de potencia		Consumo de potencia		Consumo de potencia		Consumo de potencia		Consumo de potencia		Consumo de potencia
	Consumo de potencia		Consumo de potencia		Consumo de potencia		Consumo de potencia		Consumo de potencia		Consumo de potencia		Consumo de potencia		Consumo de potencia
55QNED85AQA 55QNED85UQA	1,233 (48.5)	1 233 (48.5)	779 (30.6)	779 (30.6)	257 (10.1)	257 (10.1)	716 (28.1)	716 (28.1)	45.5 (1.7)	45.5 (1.7)	20.2 (44.5)	20.2 (44.5)	19.8 (43.6)	19.8 (43.6)	195 W
65QNED85AQA 65QNED85UQA	1,452 (57.1)	1 452 (57.1)	904 (35.5)	904 (35.5)	295 (11.6)	295 (11.6)	839 (33)	839 (33)	44.9 (1.7)	44.9 (1.7)	30.6 (67.4)	30.6 (67.4)	30.2 (66.5)	30.2 (66.5)	250 W
65QNED90UQA	1,444 (56.8)	1 444 (56.8)	898 (35.3)	898 (35.3)	295 (11.6)	295 (11.6)	834 (32.8)	834 (32.8)	29.5 (1.1)	29.5 (1.1)	26.8 (59.0)	26.8 (59.0)	26.4 (58.2)	26.4 (58.2)	290 W
65QNED99UQA	1,444 (56.8)	1 444 (56.8)	898 (35.3)	898 (35.3)	295 (11.6)	295 (11.6)	834 (32.8)	834 (32.8)	29.5 (1.1)	29.5 (1.1)	28.8 (63.4)	28.8 (63.4)	28.4 (62.6)	28.4 (62.6)	410 W

Power requirement / Alimentación requerida / Alimentation AC 120 V- 50/60 Hz



A	B	C x D (mm)	E
OLW480B MSW240	55QNED85*	300 (11.8) x 300 (11.8)	M6
LSW430B	65QNED85* 65QNED90* 65QNED99*	400 (15.7) x 400 (15.7)	M6



A	B	C (mm)	D
WB21LMB	55QNED85*	300 (11.8)	M6
WB21LMC	65QNED85* 65QNED90* 65QNED99*	400 (15.7)	M6



**ENGLISH** Read **Safety and Reference**.  
**ESPAÑOL** Leer **Seguridad y Consultas**.  
**FRANÇAIS** Lisez **Sécurité et références**.

**ENGLISH** **Easy Setup Guide**  
 Please read this manual carefully before operating your set and retain it for future reference.

**ESPAÑOL** **Guía Rápida de Configuración**  
 Lea atentamente este manual antes de poner en marcha el equipo y consérvelo para futuras consultas.

**FRANÇAIS** **Guide de configuration rapide**  
 Avant d'utiliser l'appareil, veuillez lire attentivement ce manuel et le conserver pour pouvoir vous y reporter ultérieurement.

⊕ : Depending upon model / Según el modelo / Selon le modèle