



SIMPLE MANUAL

Network 3D Blu-ray Disc™ / DVD Player

To view the instructions of advanced features,
visit <http://www.lg.com> and then download Owner's Manual.
Some of the content in this manual may differ from your unit.

BP736



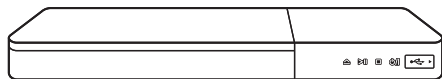
* M F L 6 9 4 8 2 8 0 7 *

www.lg.com



HDMI Cable

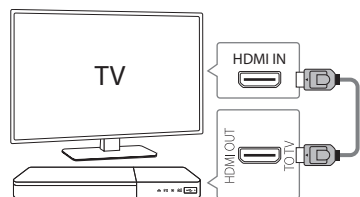
Front Panel



- △ Disc Tray Open / Close
- >|| Play / Pause
- Stop
- ⏻ / I Power On / Off
- USB Port Connect a USB device.

1 TV Connection

- 1 Connect the HDMI jack on the player to the HDMI jack on the TV using a HDMI cable.



- 2 Set the input selector to HDMI on the TV.
- 3 Follow the instructions on the TV screen using remote control.



To enjoy online services, the player should be connected to internet through wired or wireless connection.

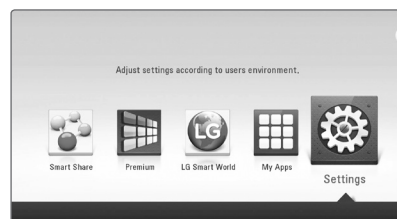
Rear Panel



- OPTICAL (AUDIO OUT) Connect to AV Receiver.
- LAN Connect to Internet.
- HDMI OUT (TO TV) Connect to TV.

2 Home Menu

After initial setup, Home menu appears on the TV screen. Enjoy various functions on the player.



Additional Information

Specification

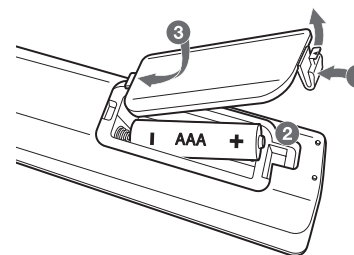
Power Requirements	Refer to main label on the rear panel.
Power Consumption	16 W
Networked standby power consumption	0.5 W (If all network ports are activated.)
Dimensions (W x H x D)	Approx. 430 mm x 43.5 mm x 205 mm
Net Weight (Approx.)	1.55 kg
Bus Power Supply (USB)	5 V 500 mA

Design and specifications are subject to change without notice.

How to disconnect the wireless network connection or the wireless device

Turn off the unit by using the power button.

Replacement of battery



Open source software notice

To obtain the source code under GPL, LGPL, MPL and other open source licenses, that is contained in this product, please visit <http://opensource.lge.com>.

In addition to the source code, all referred license terms, warranty disclaimers and copyright notices are available for download.

LG Electronics will also provide open source code to you on CD-ROM for a charge covering the cost of performing such distribution (such as the cost of media, shipping and handling) upon email request to opensource@lge.com. This offer is valid for three (3) years from the date on which you purchased the product.

Controller App



Download the **LG AV Remote** App to your device.

Private Sound Mode



With *MUSIC flow*



For more information, download the online owner's manual. <http://www.lg.com>

