

Model	VK76** Series    VC53** Series		
Language	English		
Page	20	Color(cover/body)	2/1
Material	Weight 80g	Size(W*H)	
Date	2015/10/20	Designer	P.H.LONG
Part No	MFL68009418	Description	Manual,Service

### Chage Record

No.	Change content	ECO No.	Date	Designer	Confirm
①					
②					
③					
④					
⑤					
⑥					
⑦					
⑧					
⑨					



Internal Use Only

Website <http://biz.lgservice.com>

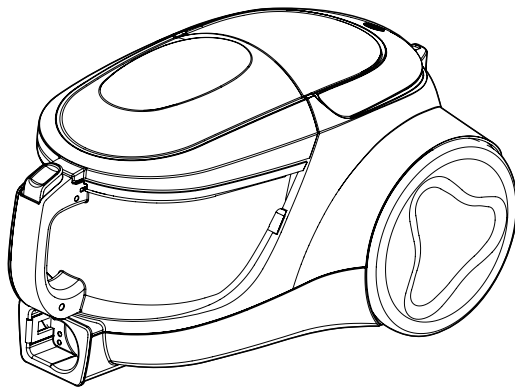
# VACUUM CLEANER

# **SERVICE MANUAL**

MODEL : VK76\*\* Series  
VC53\*\* Series

## **CAUTION**

BEFORE SERVICING THE UNIT, READ THE  
"SAFETY PRECAUTIONS" IN THIS MANUAL.



October,2015  
Printed in Vietnam

MFL68009418

# CONTENTS

---

SAFETY PRECAUTIONS.....	3
CAUTIONS .....	3
DESCRIPTION.....	4
SPECIFICATIONS .....	4
DISASSEMBLY OF THE MAIN PARTS.....	5
TROUBLE SHOOTING GUIDE.....	9
SCHEMATIC DIAGRAM .....	12
CIRCUIT DIAGRAM .....	13
EXPLODED VIEW .....	14

# SAFETY PRECAUTIONS

---

**BEFORE OPERATING THIS VACUUM CLEANER, READ THIS SERVICE MANUAL THOROUGHLY, AND OBSERVE EACH POINT CAREFULLY.**

## 1. Motor filter(Air Cleaner)

- 1) This filter is reusable.
- 2) Never use the vacuum cleaner without filter. It may damage the motor.
- 3) If the suction power is decreased after cleaning dust tank, clean or wash the motor filter and air filter.
- 4) The motor filter and air filters clean or wash at least once a month

**NOTE :** Reusing of the motor filter.

- Never wash the filter in a washing machine or in a dishwasher.
- Never use hot water for washing the filter.
- Reuse the filter after drying it completely in the shade for a day.
- Do not dry near fire or direct sunray.

## 2. Exhaust filter (Micro filter)

- 1) This filter is reusable filter.
- 2) For cleaner air, filter must be assembled.

**NOTE :** Reusing of the exhaust filter.

- Never wash the filter in a washing machine or in a dishwasher.
- Never use hot water for washing the filter.
- Re-use the filter after drying it completely in the shade.
- Do not dry near fire or direct sun ray.

**Option (Choose according to buyer's request)**

### Exhaust filter (HEPA filter)

- 1) This filter is reusable HEPA filter.
- 2) For clean air, filter must be assembled.
- 3) Dust off filter. (Do not wash filter with water.)
- 4) Clean the exhaust filter once 1 year.

**NOTE :** Reusing of the exhaust filter.

- Do not wash filter with water.
- Do not brush the filter. This will cause permanently damage allowing dust to by-pass the filter.

## 3. Avoid suction such materials as :

- 1) Liquid or wet dust :  
Clogs the ventilation holes, reduces the suction power significantly and harms the motor.
- 2) Inflammable liquids such as benzene, alcohol or solvents.
- 3) Burning objects such as cigarette butts.
- 4) Bulky objects such as vinyl, paper etc.
- 5) Sharp objects such as needles, pins, metal, glass particles etc.

## 4. Attachments

- Nozzle : for cleaning wooden floor, the room floor and carpet.
- Crevice Tool : for cleaning any crevice, inside corners or window frames. However, do not use the crevice tool more than 20 minutes because it may cause harm to the motor.
- Dusting brush : for cleaning clothes curtains.
- Upholstery nozzle : Clean the furniture, mattresses etc.

**5. Close supervision is necessary when this vacuum cleaner is used by or near children. Children's carelessness may cause damage to the cleaner or injure persons.**

**6. Air exhausted from the vacuum cleaner is normally warm. But if extraordinarily hot air is exhausted, check if the telescopic tube, hose or clean filter is clogged or not.**

**7. Electric shock could occur if used outdoors or on wet surfaces.**

# CAUTIONS

---

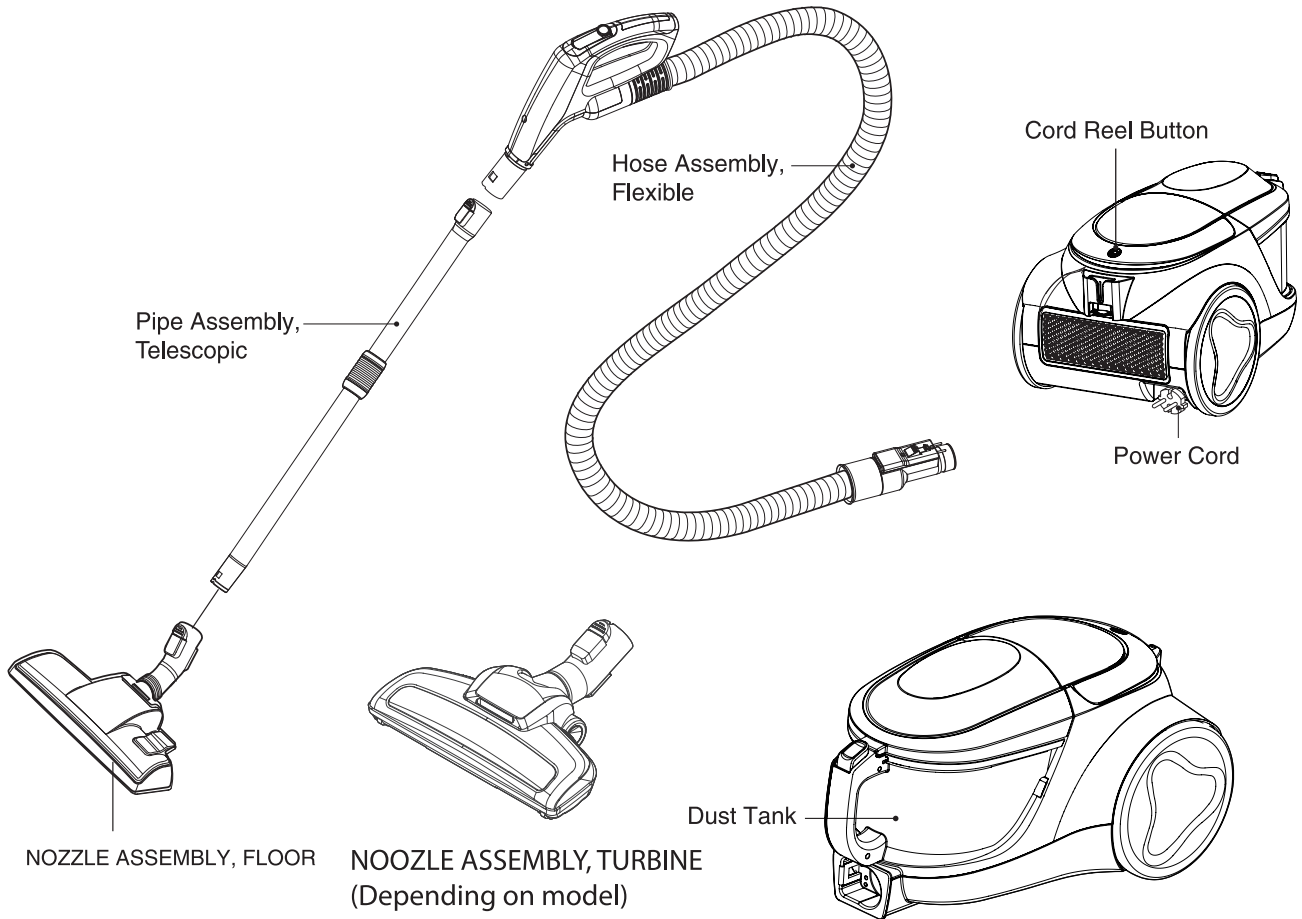
**BEFORE ATTEMPTING TO SERVICE OR ADJUST ANY PART OF THE VACUUM CLEANER, DISCONNECT THE ELECTRICAL POWER SUPPLY CORD FROM THE WALL OUTLET.**

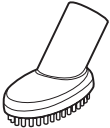
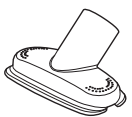

## 1. Motor exchange

- 1) Separate the Body Cover and Body Base by unfastening the screws.
- 2) After disconnecting the lead wires, replace the old motor with a new one.

**2. In case of exchanging other parts. refer to the exploded view.**

# DESCRIPTION



ATTACHMENTS		
 BRUSH ASSEMBLY, DUST (depending on model)	 NOZZLE, UPHOLSTERY	 NOZZLE, CREVICE

# SPECIFICATIONS

- **MODEL** : REFER TO THE COVER PAGE
  - **POWER SOURCE** : ON RATING PLATE
  - **POWER CONSUMPTION** : ON RATING PLATE
  - **POWER CONTROL** :
    - **MAIN** : SLIDE KNOB CONTROL (F/HOSE)
  - **CORD LENGTH** : 6 m
  - **HOSE LENGTH** : 1.5 m
  - **NET WEIGHT** : 5.20kg
  - **PACKING WEIGHT** : 9.0kg
  - **NET DIMENSION** : 435×282 ×258 (D×W×H)
  - This specifications are subject to change according to the buyer's request.
- |  |  |
|--|--|
| <ul style="list-style-type: none"> <li>• <b>PACKING DIMENSION</b> : 590×325×330 (D×W×H)</li> <li>• <b>ATTACHMENTS</b></li> </ul> | HOSE ASSEMBLY, FLEXIBLE.....1EA<br>PIPE ASSEMBLY, TELESCOPIC .....1EA<br>NOZZLE ASSEMBLY, FLOOR.....1EA<br>BRUSH ASSEMBLY, DUST .....1EA<br>NOZZLE, UPHOLSTERY .....1EA<br>NOZZLE, CREVICE.....1EA |
|--|--|

# Methods for Disassembly, Assembly and Repair of Main Parts

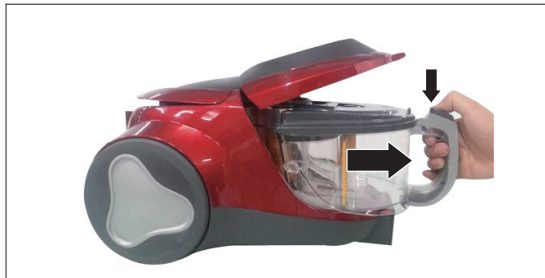
## Need-to-know for disassembly

- Pull out the plug before disassembly and adjustment.
1. All the parts are almost connected by screws or assembled by insertion. Disassemble in order with reference to the disassembly diagram.
  2. Do not proceed with further disassembly except the necessary part. Parts beyond the disassembly diagram are not to be disassembled.

## Method for disassembly of main parts

### 1. Method for disassembling the cover of the main unit.

- 1) Press the release button on the handle of the dust tank.  
Then pull the tank assembly out of the main unit.



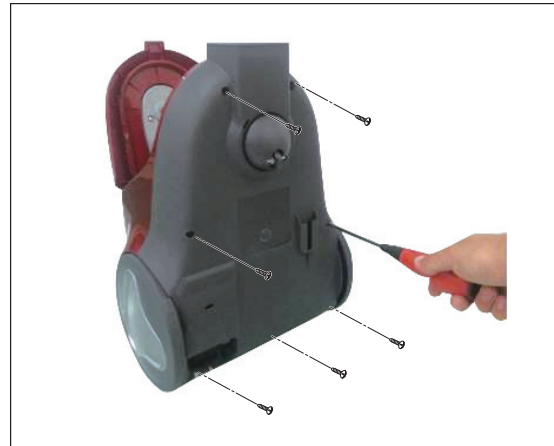
- 2) Remove pre-filter assembly from the main unit.



- 3) Remove the exhaust filter on the back side.



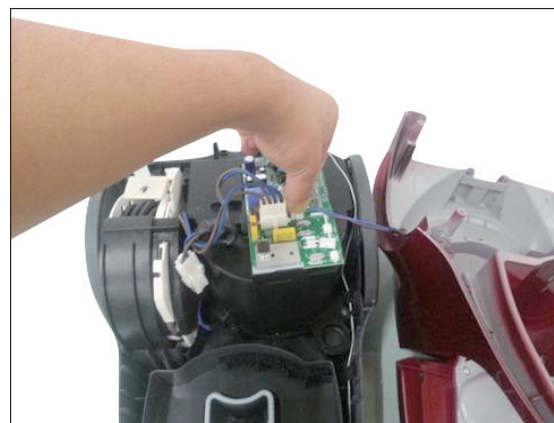
- 4) Loosen the screws in the base of the main unit.  
(with TPL4X20: 7 pieces, ⊕ type driver)



- 5) Lift the cover assembly of the main unit



- 6) Unplug the cable on the board.



## 2. Method for disassembling case assembly / cord reel

- 1) Loosen the screw fixing the chamber.(with TPL4X16:1 piece, ⊕ type drive)



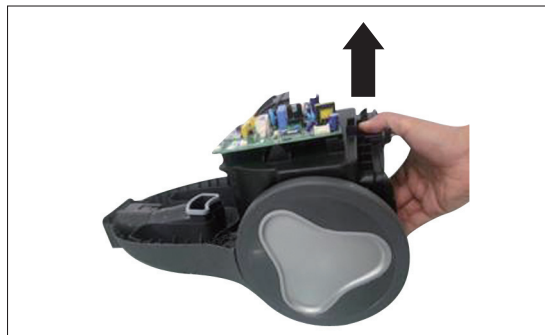
- 2) Unplug the cable on the board.  
(Hold the board tightly not to move)



- 3) Unplug the cable between board and motor



- 4) Lift the Case Assembly



- 5) Lift the Cord Reel Assembly



## 3. Method for disassembling Top cover assembly

- 1) Loosen the screw fixing the Top cover assembly.  
(with TPL4X14:4 piece, ⊕ type drive)

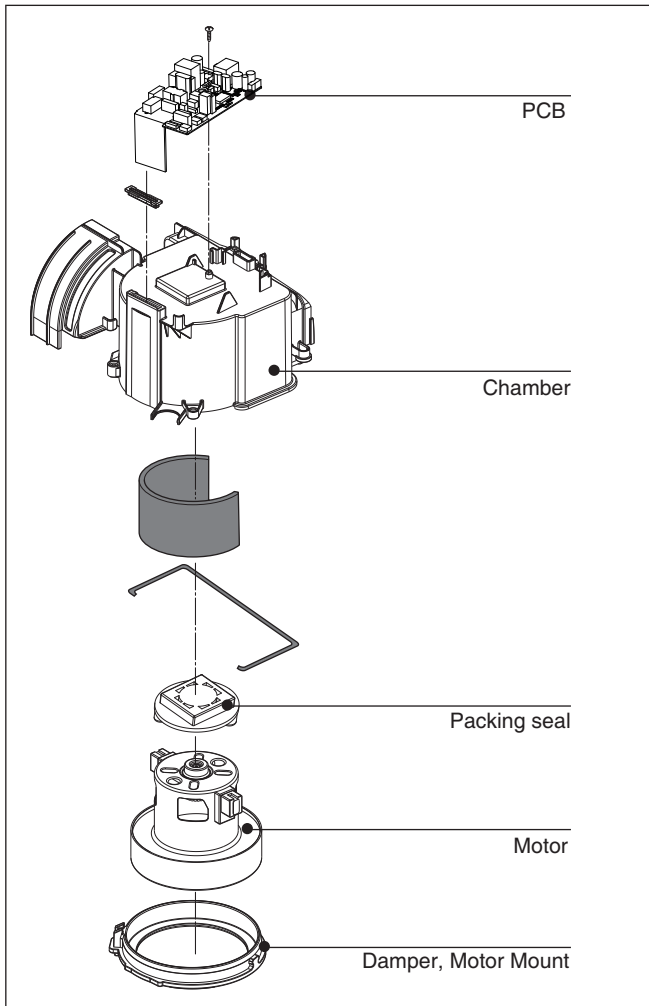


- 2) Remove Top cover assembly from the main unit.



### 3. Replacement of motor

- 1) Disassemble the motor assembly as shown in the figure.
- 2) For re-assembly after disassembling the motor cover, do so in the reverse sequence and insert the packing seal, motor and mount packing. During the assembly, make sure to prevent the packing seal and motor mount packing from dropping out (which may reduce the suction force).

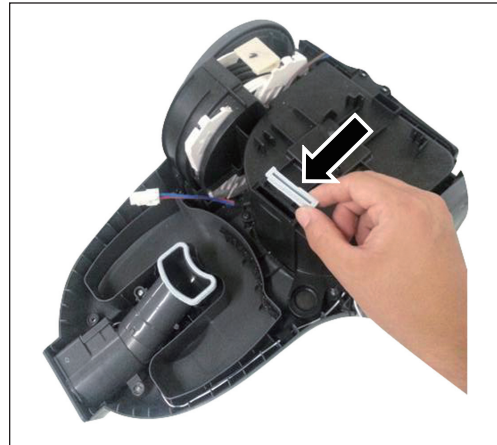


### 4. Replacement of PWB Assembly

- 1) After removing the cable on board (Page 6)
- 2) Loosen the 1 screw fixing the board. (with FAB3X8: 2 pieces, ⊕ type drive)

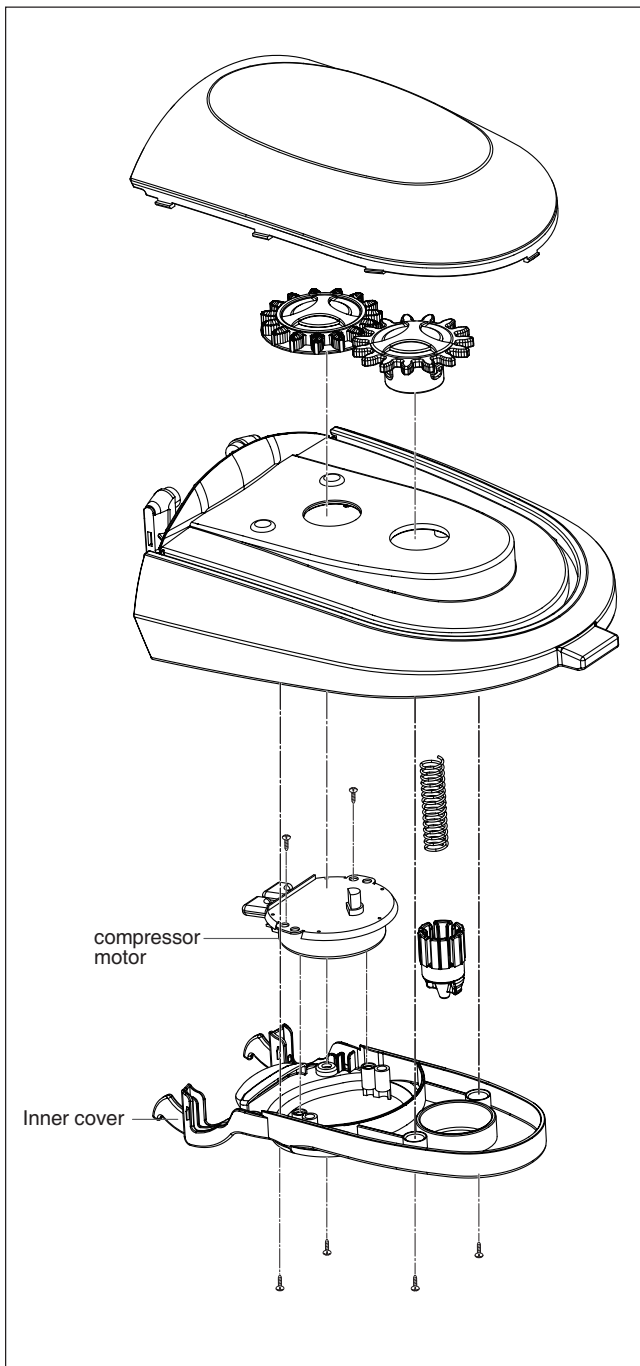


- 3) Re-assemble PWB Assembly.  
Do insert rubber Gasket before assembling PWB Assembly.



## 5.Replacement of compressor motor

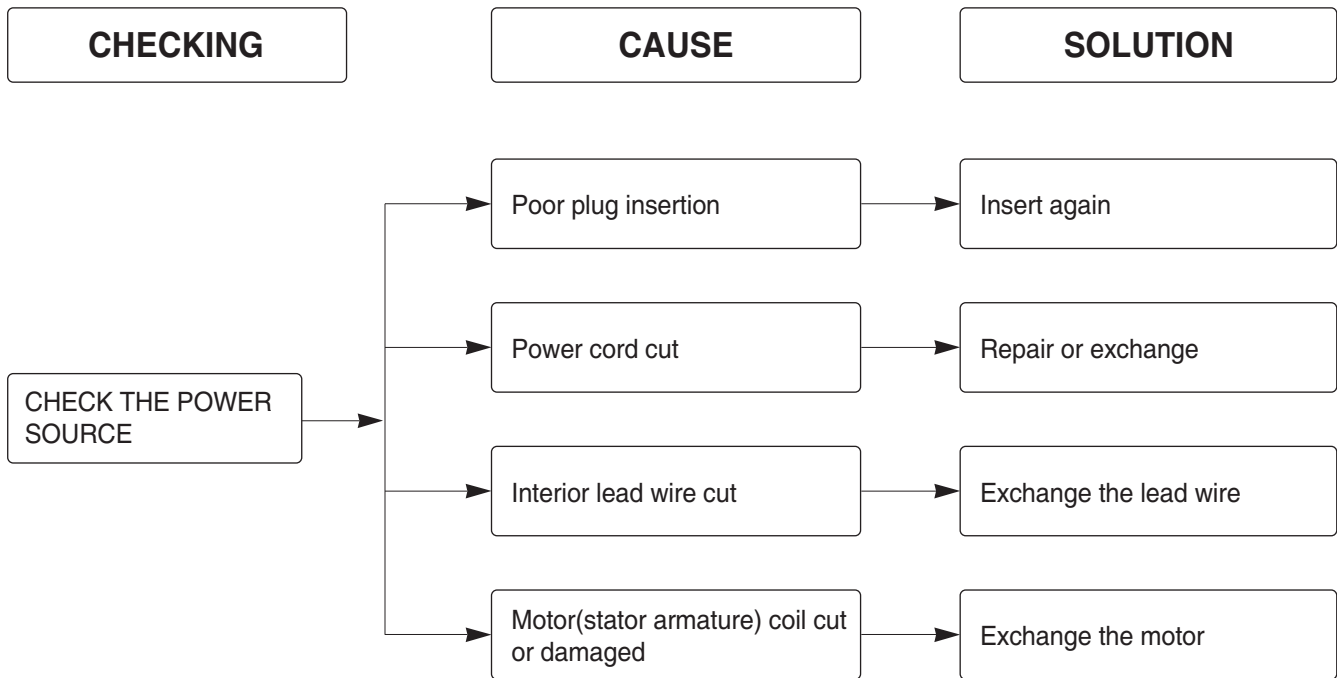
- 1) Remove the 4 screws fastening the inner cover .(with TPL4X10:4 piece, ⊕ type drive)
- 2) Pull out the inner cover.
- 3) Remove the 2 screws fastening the motor compressor motor. (with TPL4X10:2 piece, ⊕ type drive)
- 4) Pull out the compressor motor and disconnect the two lead wires from it.



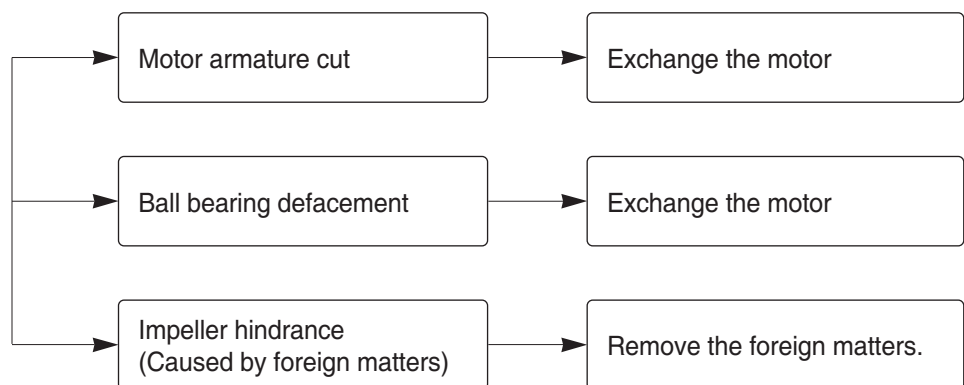
# TROUBLE SHOOTING GUIDE

---

## 1. SWITCH ON BUT MOTOR DOES NOT TURN.

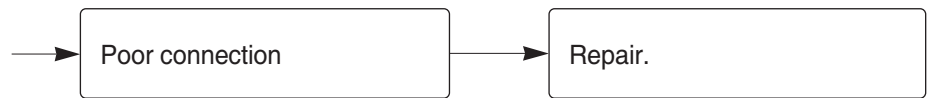


## 2. SWITCH ON, MAIN MOTOR DOES NOT TURN BUT BUZZES.

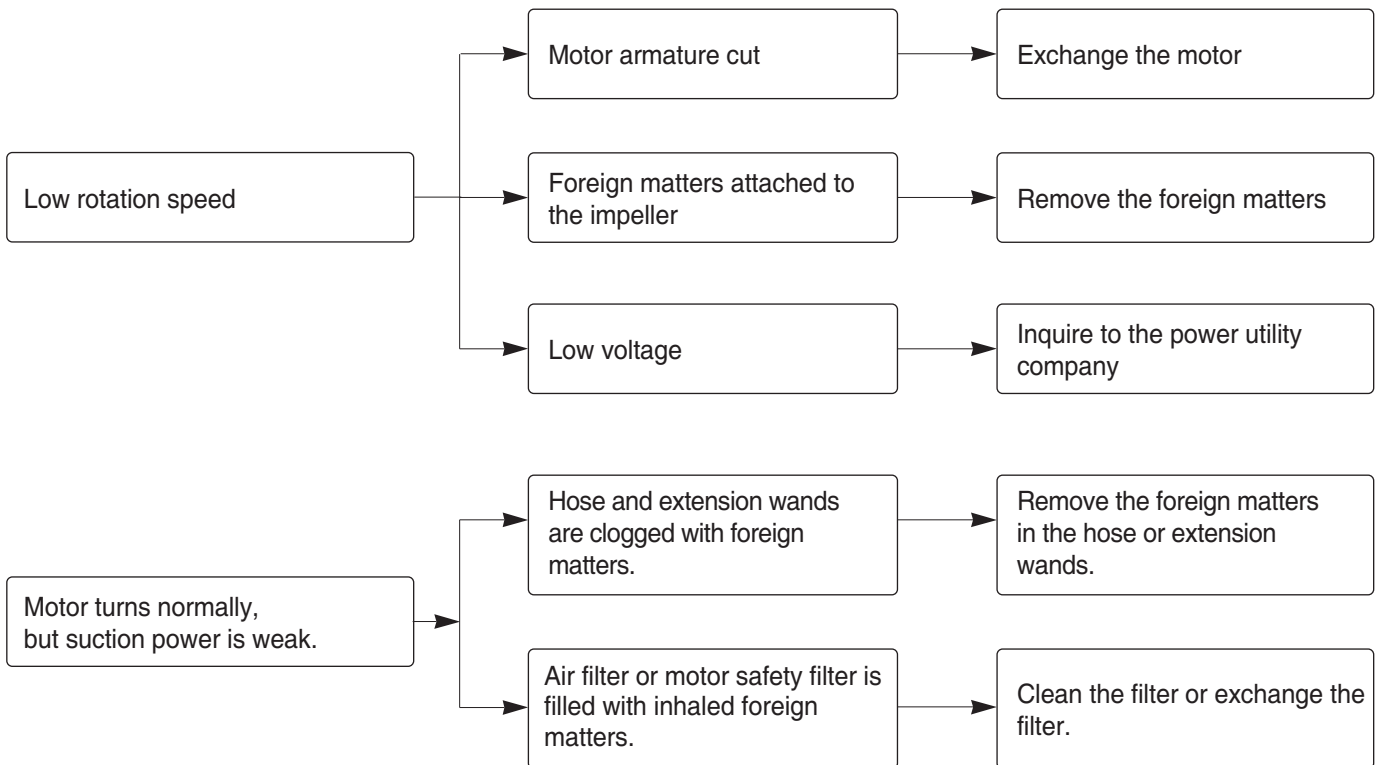


---

### 3. SWITCH OFF BUT MOTOR TURNS

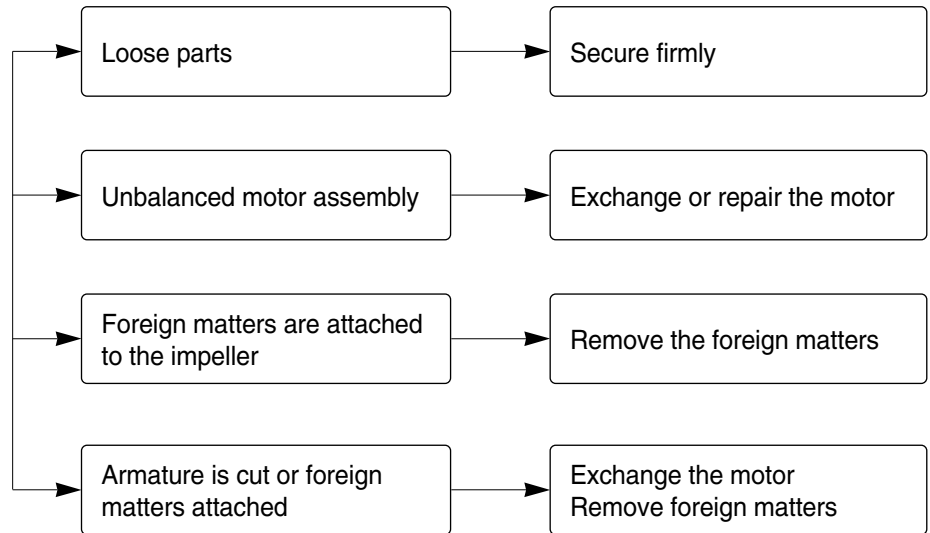


### 4. WEAK SUCTION POWER

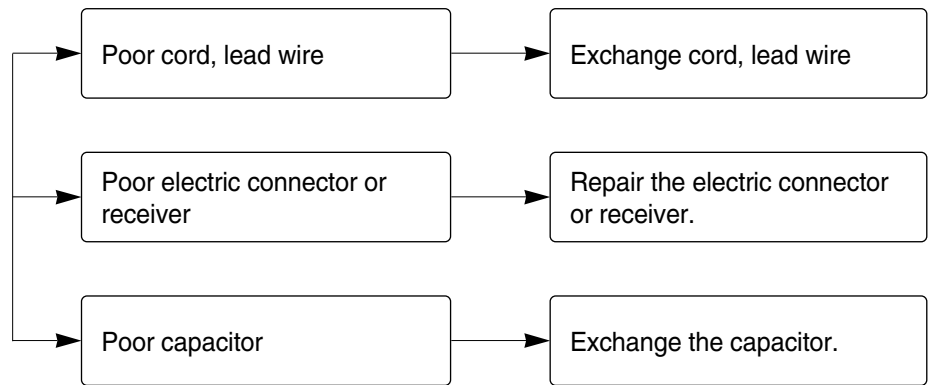


---

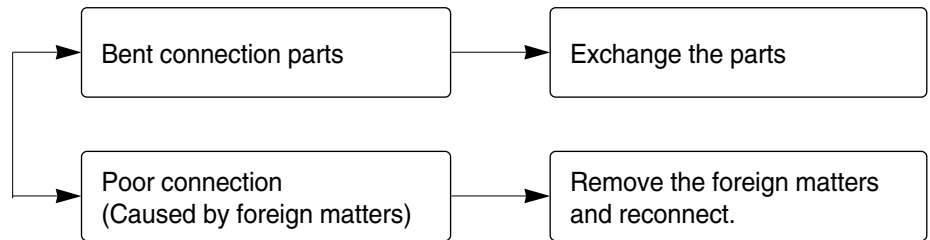
## 5. VIBRATION NOISES



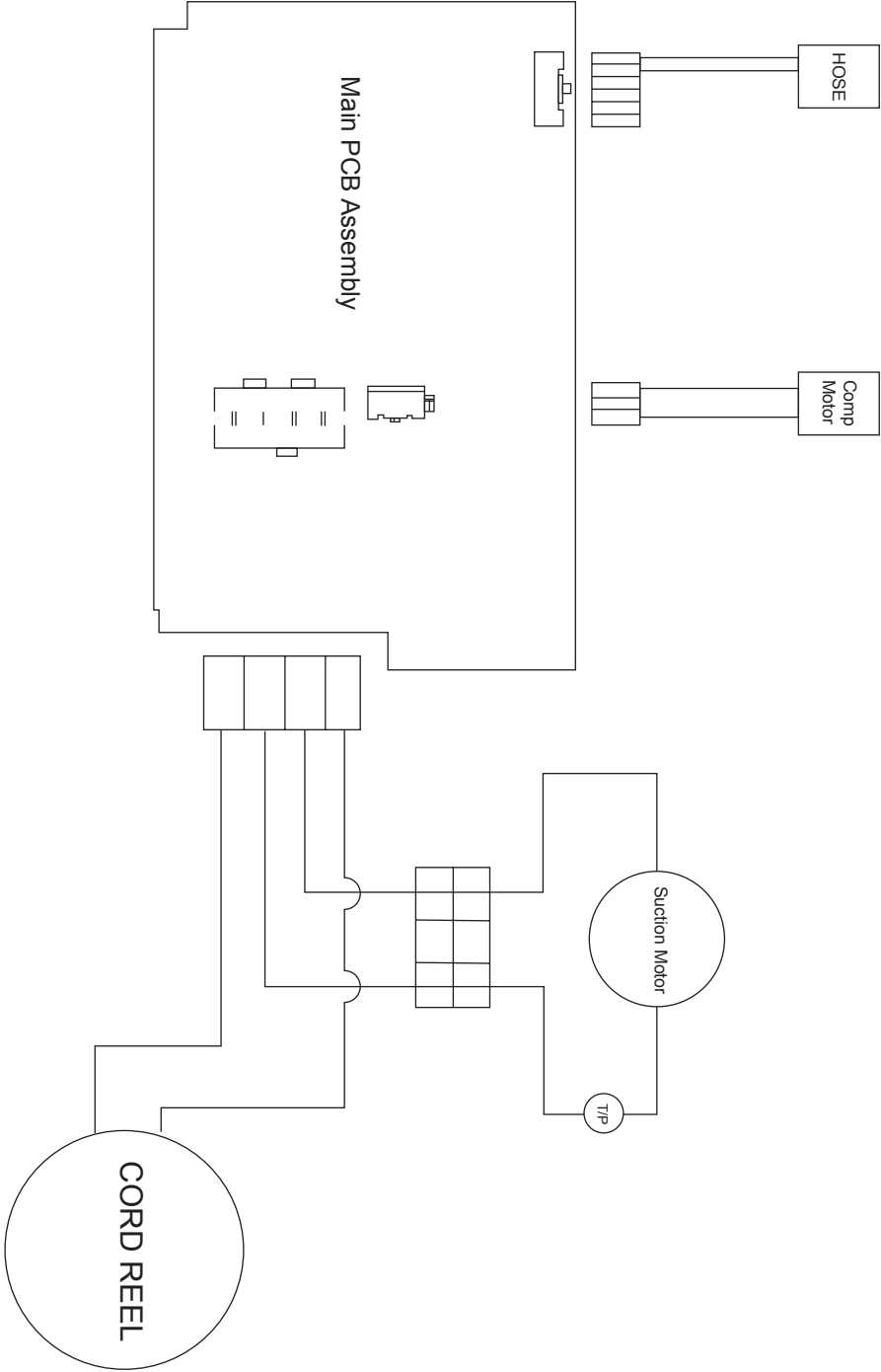
## 6. RADIO, TV RECEPTION DISTURBANCE



## 7. IMPROPER TUBE OF NOZZLE CONNECTION



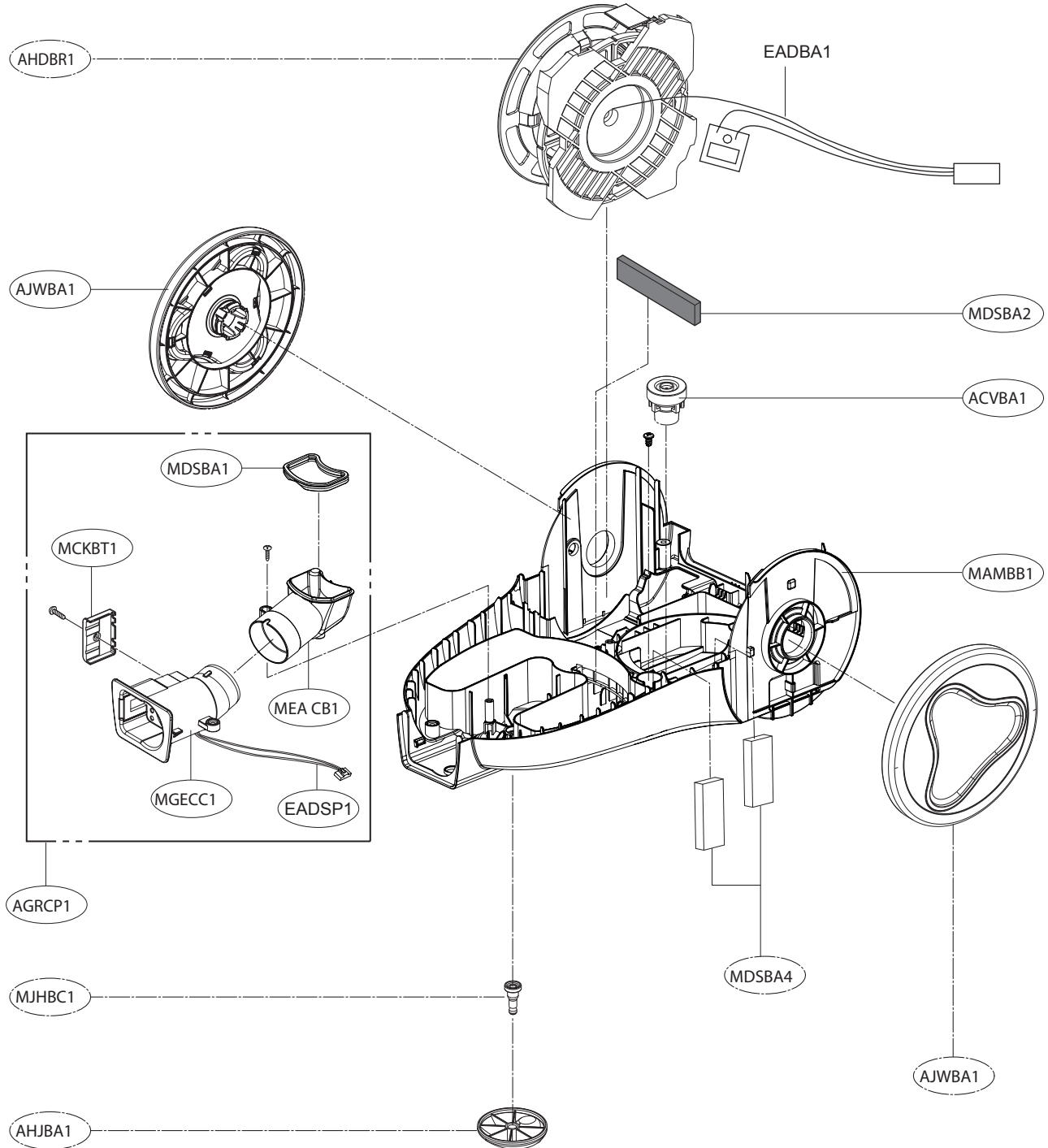
# SCHEMATIC DIAGRAM



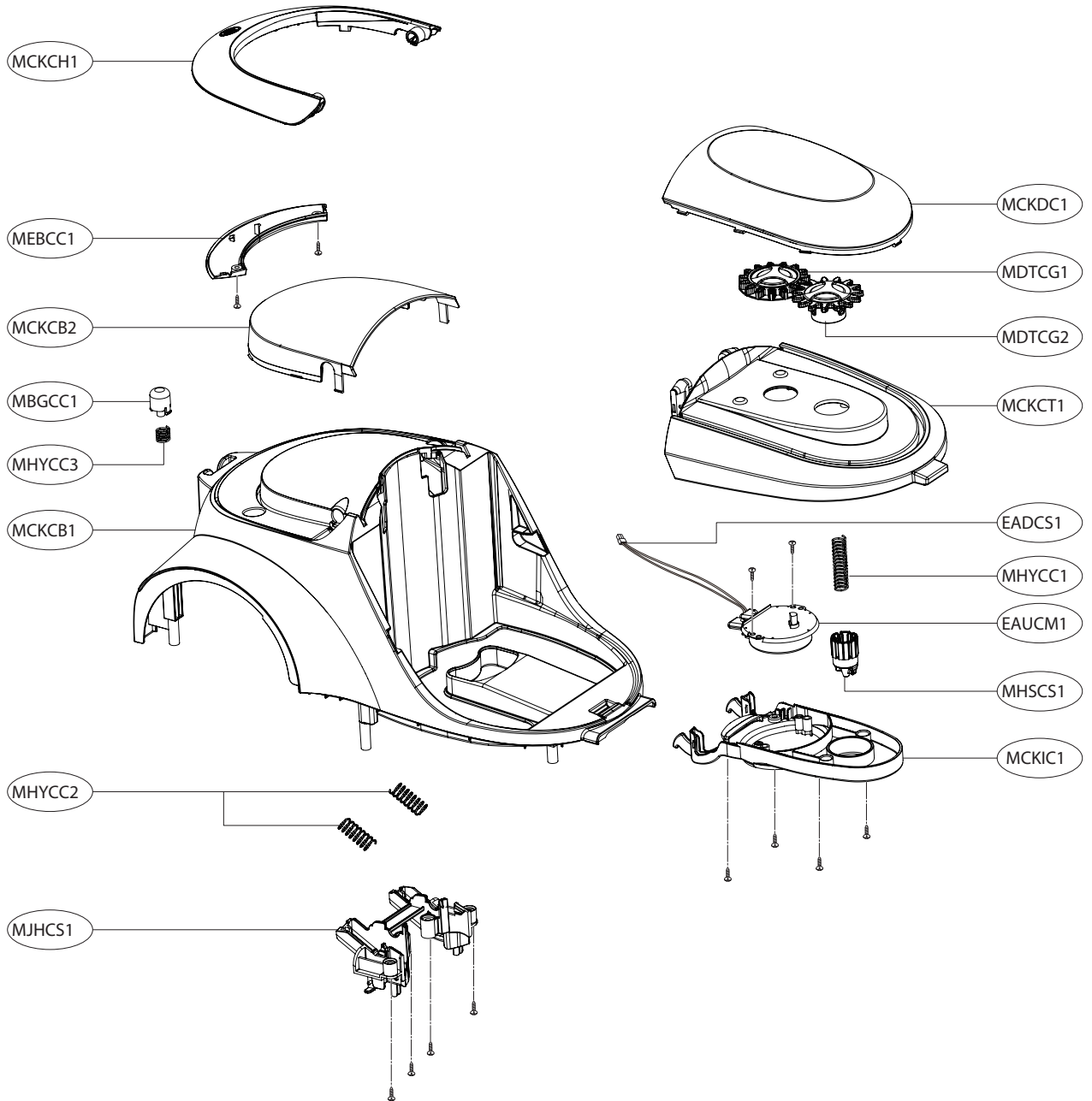


# EXPLODED VIEW

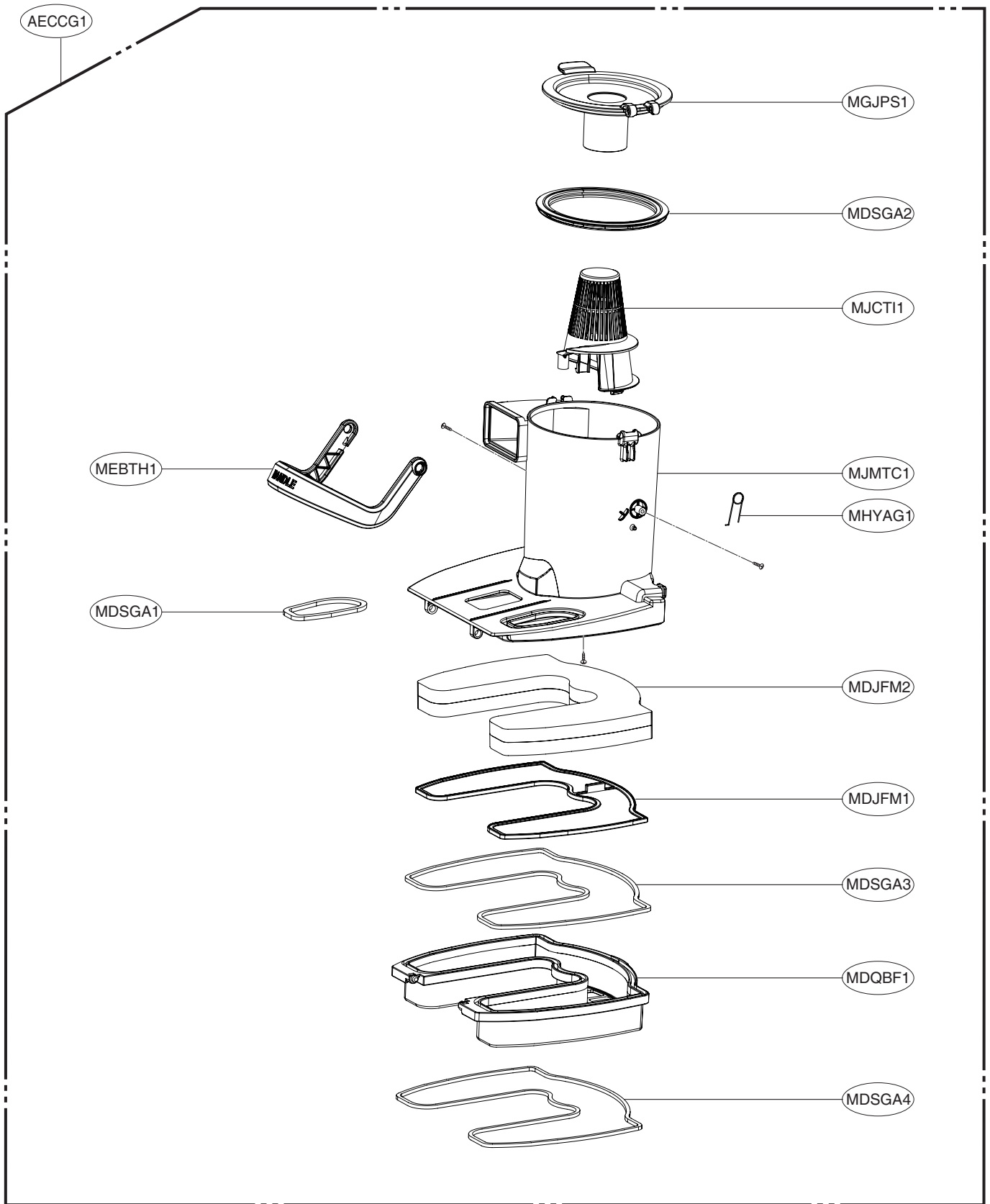
## BASE ASSEMBLY, BODY



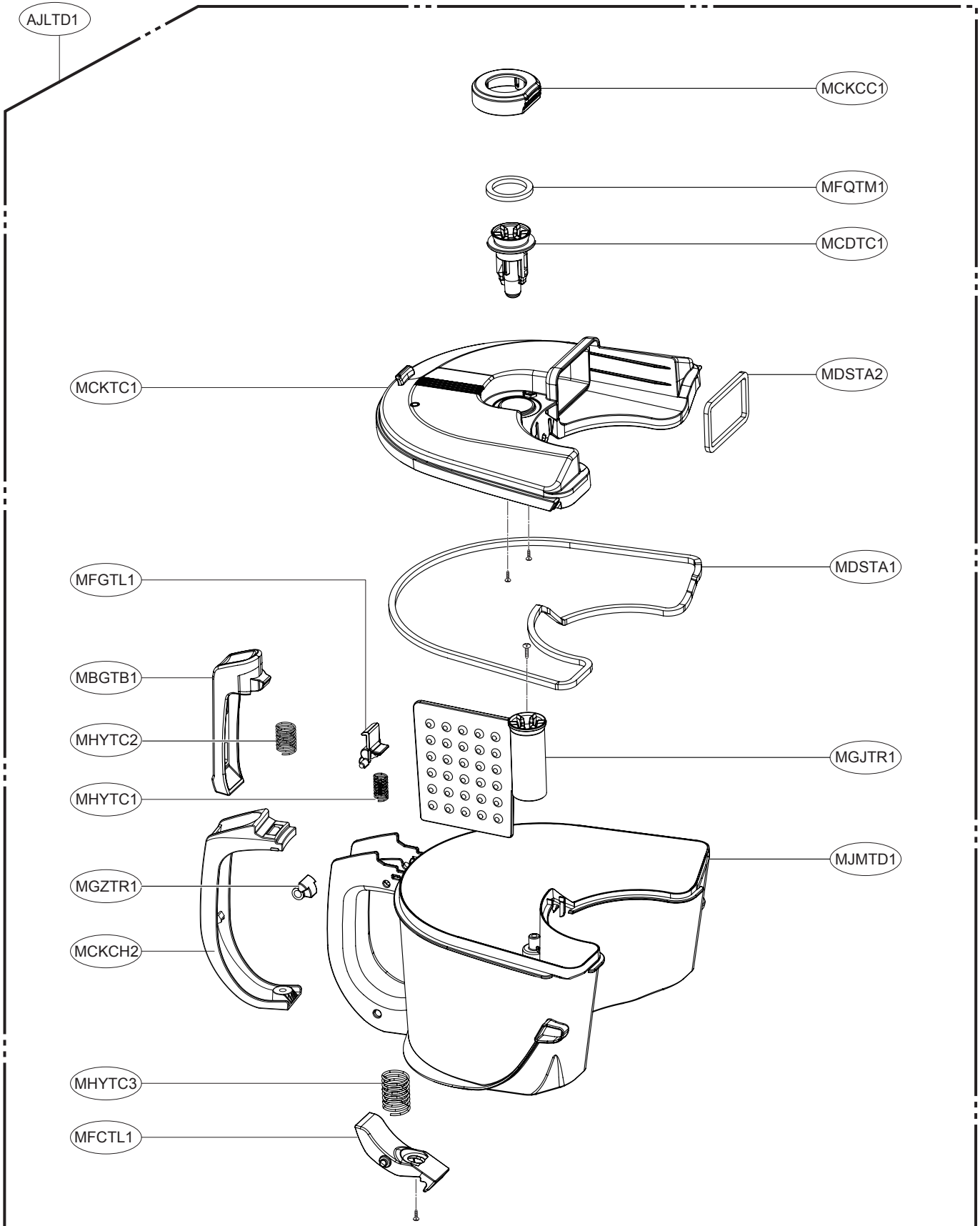
# COVER ASSEMBLY, BODY



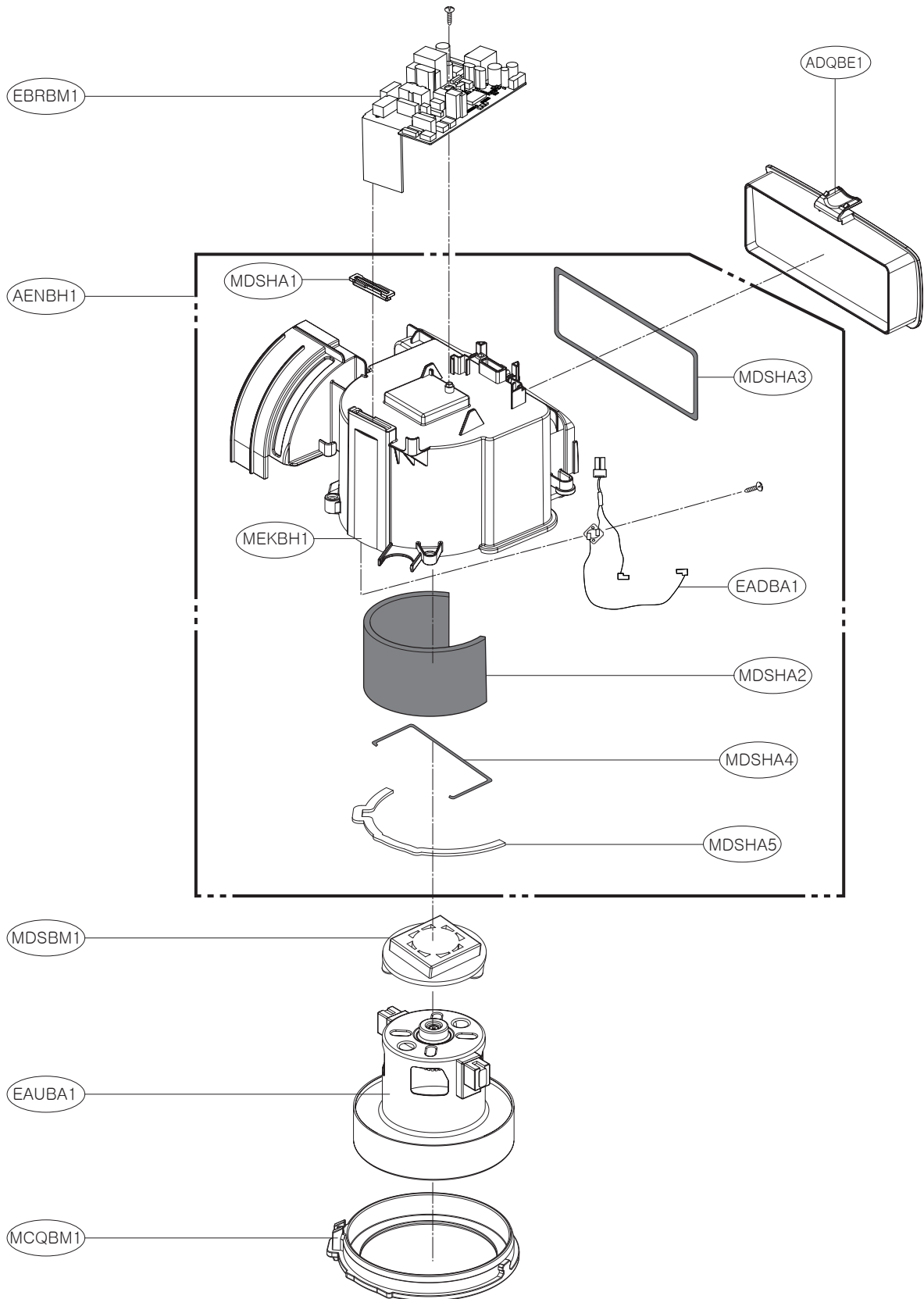
# GUIDE ASSEMBLY, AIR



# TANK ASSEMBLY, DUST



# HOUSING ASSEMBLY MOTOR



# ACCESSORIES

