



ENGLISH

FRANÇAIS

NEDERLANDS

DEUTSCH

ITALIANO

SIMPLE MANUAL

# LG Wi-Fi Sound Bar

---

Please read this manual carefully before operating your set and retain it for future reference.

To view the instructions of advanced features, visit <http://www.lg.com> and then download Owner's Manual. Some of the content in this manual may differ from your unit.

MODEL

DSN11RG

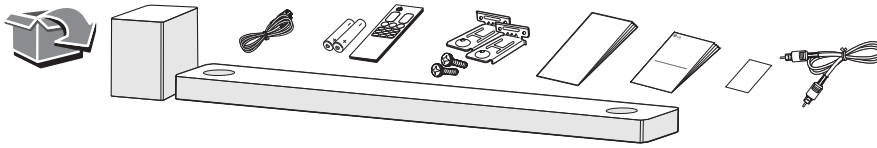


MFL71841358

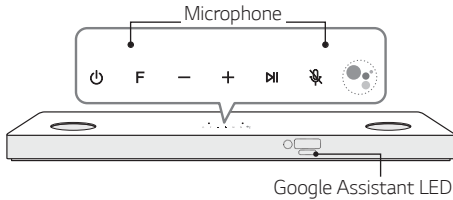
2104\_Rev01

[www.lg.com](http://www.lg.com)

Copyright © 2021 LG Electronics Inc. All Rights Reserved.



## Front Panel

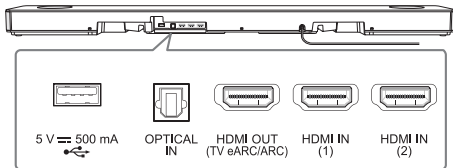


- (Standby) ..... Switches the unit ON or OFF.
- F** (Function) ..... Selects function.
- /+** (Volume) ..... Adjusts volume.
- ▶||** ..... Play / pause
- ⊘** (Mic mute) ..... Enables and disables Voice recognition.
- ..... Standby and Stops feedback of Google Assistant.

### Reset the Unit

Press and hold the on the unit until you hear the beep sound once.

## Rear Panel



- USB port ..... Connect to a USB device.
- OPTICAL IN** ..... Connect to an optical device.
- HDMI OUT (TV eARC/ARC)** ..... Connect to a TV.
- HDMI IN (1) / HDMI IN (2)** ..... Connect to device with HDMI OUT.

Make sure to properly align and connect the optical cable; improper alignment may cause damage to the jack.

## Subwoofer Connection

Place the wireless subwoofer near the sound bar and follow steps below.

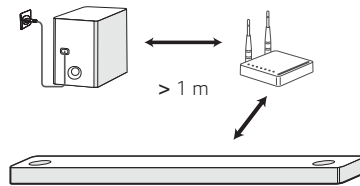
- 1** Connect the power cord of the sound bar and the wireless subwoofer to the outlet.
- 2** Turn on the sound bar.
  - The sound bar and wireless subwoofer will be **automatically** connected. The subwoofer's green LED turns on.

## Manually Subwoofer Connection

If the subwoofer does not make sound, try to connect manually.

- 1** Press **Pairing** on the rear of the wireless subwoofer.
  - The green LED on the rear of the wireless subwoofer blinks quickly. (If the green LED does not blink, press and hold the **Pairing**.)
- 2** Turn on the sound bar.
  - Pairing is completed. The green LED on the rear of the wireless subwoofer turns on.

Keep the sound bar and the subwoofer away from the device (ex. wireless router, microwave oven, etc.) over 1 m to prevent wireless interference.

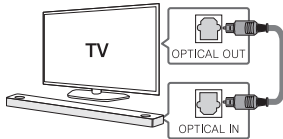


## TV Connection

Connect the sound bar and TV using Optical (A) or HDMI ARC (B).

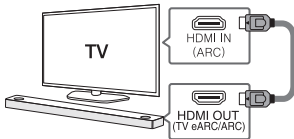
### A Optical Connection

- 1 Connect the sound bar to the TV using Optical cable.
- 2 Set up [External Speaker (Optical)] on your TV setting menu.



### B HDMI (TV eARC/ARC) Connection

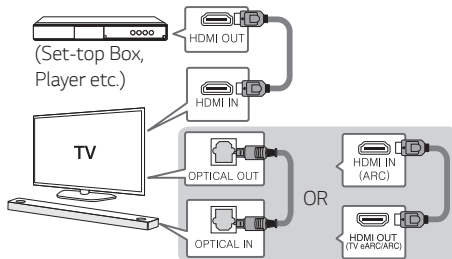
- 1 Connect the sound bar to the TV using HDMI cable.
- 2 Set up [External Speaker (HDMI ARC)] on your TV setting menu.



- HDMI connection is unavailable if your TV does not support HDMI ARC.
- If this unit is connected by OPTICAL and ARC at the same time, the ARC signal has a higher priority.

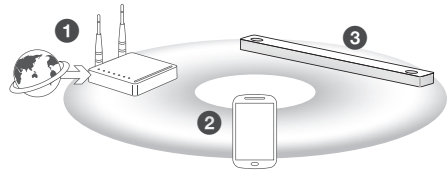
## Additional Device Connection

- 1 Connect to the external device like as follow.



- 2 Set the input source by pressing **F** repeatedly.

## Network Connection



- 1 Check network condition. A router connected to network should be installed.
- 2 Connect your smart device to your home network.
- 3 Connect the sound bar to the power supply.



All devices should be connected to same router.

### Step.1 Install "Google Home" App

Download the Google Home App from the Google Play or App Store.

### Step.2 Set up the Wi-Fi connection with app

- 1 Connect your smart device to the Wi-Fi network that you'll use for your unit.



In case of iOS devices, it should be turned on **Bluetooth** setting on your smart device.

- 2 Launch the "Google Home" app.
- 3 Follow the steps for Wi-Fi connection on the app.
  - When the unit is properly connected to Wi-Fi, "CONNECTED" will appear on the display window with sound.



- When connect to Wi-Fi, this app may request to create a Google Account. You will need a Google account to use this app.
- "Google Home" app is provided by Google. It might be revised by a change of Google Policy.
- For more information (Set up, Usage, Help etc.), research "Google Assistant Help" or visit the web site. <https://support.google.com/assistant> This public site is provided for devices that work with Google Assistant.
- The unit may not be available for use on some functions from the "Google Assistant Help" site.
- The speaker is not compatible with "Smart ThinQ" app. Therefore it is not available in setup and cannot be controlled by using "Smart ThinQ" app.

## Bluetooth Connection

### Step 1. Connect the Wi-Fi

Make sure the unit connects to Wi-Fi by using "Google Home" app.



**Bluetooth** function is inactive before connecting to Wi-Fi.

### Step 2. Change Function

Select the **Bluetooth** function by pressing F repeatedly.

### Step 3. Find and Select your speaker name

Select speaker name that was set on "Google Home" app on the device list of your smart device. When successfully connected **Bluetooth**, "PAIRED" will appear on display window.


## How to Use "Google Assistant"

Make sure the unit is connected to Wi-Fi.

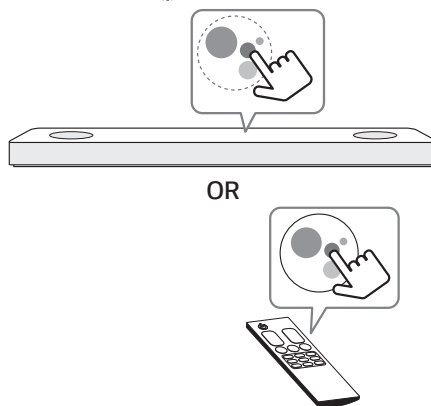
### Case 1. Say "Hey Google"



The Google Assistant only responds to voice commands when you are using Wi-Fi or BT (**Bluetooth**) as the input.

If you are using HDMI, Optical, ARC, Optical Sound Sync, or USB input, then you must use the  button to activate the Google Assistant.

### Case 2. Press





## Voice command

- **Plan your day**

"Tell me about my day!"

"What's my next meeting?"

"Set a reminder to check schedule at 6pm."

- **Weather**

"What's the weather?"

"What's the weather like tomorrow?"

"What's the weather like in Cardiff?"

- **Music**

"Play the music." "Next song."

"Previous song." "Pause the music"

- **Availability**

"How many calories in a pie?"

"How do I get to Paddington Station?"

"How do you say hello in Korean?"

- **Internet**

"What movies are showing this weekend?"

"Why is the sky blue?"

"What is the smallest country in Europe?"

"How much sugar is there in a Coke?"

- **Smart Home**

"Turn up the thermostat."

"Set the thermostat to 22 degrees"

"Dim the lights in the kitchen."

"Is the light on in the living room?"

- For more information on the voice commands, refer to the "Google Home" app screen or visit the web site. <https://support.google.com/assistant>
- If you're having problems with Voice recognition or this product, suggest your feedback by saying "Hey Google, feedback". It is helpful to Google Service quality enhancement.

## Additional

### Comfortable Function

With the Google Assistant built in, you can control compatible smart home devices such as TVs, lights, switches, plugs, thermostats and more by simply using your voice.



For more information, visit the below web site.

- **Set up, Usage and more:** <https://support.google.com/assistant>
- **Compatible LG appliance models:** Visit <http://www.lg.com> and then search the information.

### Download LG Sound Bar Application

You can manage the speaker settings and control the speaker by using "LG Sound Bar".

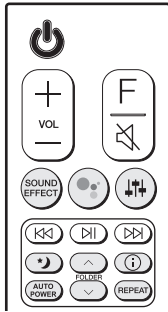
Download "LG Sound Bar" on the App Store or Google Play Store.

### AI Room calibration

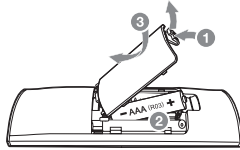
AI Room Calibration is a sound tuning tool, which adjusts the audio settings of the Sound Bar based on the room acoustics and environment.

To access the AI Room Calibration it is necessary to install the "LG Sound Bar" app. On [Sound Setting] menu, choose [AI Room Calibration].

## Remote control



## Replacement of Battery



**SOUND EFFECT:** Selects a sound effect mode.

- **TV remote:** Long press **SOUND EFFECT** and press it again to use TV remote control.

: Standby and Stops feedback of Google Assistant.

: Adjusts sound level of each speaker.

- **Surround sound:** Long press and press it again.

: Turns on or off the Night time mode.

**FOLDER** : Searches a folder.

: Displays the information of a file, an input source, a connected **Bluetooth** device name or an application name.

**AUTO POWER:** Automatically turns on by an input source.

**REPEAT:** Listens to your files repeatedly or randomly.

## Additional Information

### Specification

Power requirements	Refer to the main label.
Power consumption	Refer to the main label.
	Networked standby : 6.5 W (If all network ports are activated.)
Dimensions (W x H x D)	Approx.
	1443.0 mm x 63.0 mm x 146.0 mm (with foot)
Bus Power Supply (USB)	5 V  500 mA
Amplifier (Total RMS Output power)	770 W RMS

Design and specifications are subject to change without notice.



### Rear Surround sound

Wireless Rear Speakers Kit included for real surround sound. (SPN11M-SL / SPN11M-SR)

To enjoy content containing Dolby Atmos® and DTS:X®, the connected device and content must support Dolby Atmos® and DTS:X®.

### How to disconnect the wireless network connection or the wireless device

Turn off the unit by pressing the power button for more than 3 seconds.

**HDMI™**  
HIGH-DEFINITION MULTIMEDIA INTERFACE

## OPEN SOURCE SOFTWARE NOTICE INFORMATION

To obtain the source code under GPL, LGPL, MPL, and other open source licenses, that is contained in this product, please visit <http://opensource.lge.com>.

In addition to the source code, all referred license terms, warranty disclaimers and copyright notices are available for download.

LG Electronics will also provide open source code to you on CD-ROM for a charge covering the cost of performing such distribution (such as the cost of media, shipping, and handling) upon email request to [opensource@lge.com](mailto:opensource@lge.com).

This offer is valid for a period of three years after our last shipment of this product. This offer is valid to anyone in receipt of this information.

For more information about Google's open source, visit device settings of Google Home app.

## Disclaimers

- Google, Google Home, Google Play, Chromecast built-in and other related marks and logos are trademarks of Google LLC.
- The Google Assistant requires an internet/data connection. Data rates may apply.
- The Google Assistant is not available in certain languages and countries.
- Subscriptions may be required, and additional terms, conditions and/or charges may apply.
- Controlling certain devices and features in your home requires a compatible smart device.

## Declaration of Conformity



Hereby, LG Electronics declares that the radio equipment type Wi-Fi SOUND BAR is in compliance with Directive 2014/53/EU. The full text of the EU declaration of conformity is available at the following internet address:

<http://www.lg.com/global/support/cedoc/cedoc#>

The use of the 5150 – 5350 MHz band is restricted to indoor use only. This restriction exists in Belgium (BE), Bulgaria (BG), Czech Republic (CZ), Denmark (DK), Germany (DE), Estonia (EE), Ireland (IE), Greece (EL), Spain (ES), France (FR), Croatia (HR), Italy (IT), Cyprus (CY), Latvia (LV), Lithuania (LT), Luxembourg (LU), Hungary (HU), Malta (MT), Netherlands (NL), Austria (AT), Poland (PL), Portugal (PT), Romania (RO), Slovenia (SI), Slovakia (SK), Finland (FI), Sweden (SE), Northern Ireland (UK(NI)), Switzerland (CH), Iceland (IS), Liechtenstein (LI), and Norway (NO).

For consideration of the user, this device should be installed and operated with a minimum distance of 20 cm between the device and the body.

Frequency range	Output power (Max.)
2402 to 2480 MHz	9 dBm
2412 to 2472 MHz	20 dBm
5180 to 5320 MHz	23 dBm
5500 to 5700 MHz	23 dBm
5730 to 5850 MHz	13.35 dBm





ENGLISH

FRANÇAIS

NEDERLANDS

DEUTSCH

ITALIANO

SIMPLE MANUAL

# Wireless Rear Speakers Kit

Please read this manual carefully before operating your set and retain it for future reference.

To view the instructions of advanced features, visit <http://www.lg.com> and then download Owner's Manual. Some of the content in this manual may differ from your unit.

MODEL

SPN11M-SL, SPN11M-SR

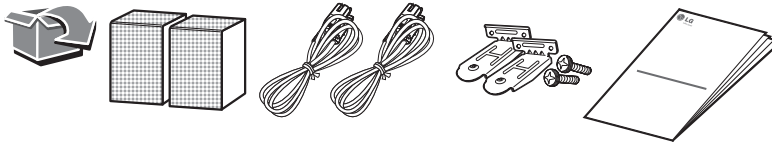


MFL71796961

2104\_Rev01

[www.lg.com](http://www.lg.com)

Copyright © 2021 LG Electronics Inc. All Rights Reserved.



## Wireless Rear speakers connection

- 1 Connect the power cord of the wireless rear speakers to the outlet.
- 2 Turn on the main unit: The sound bar and wireless rear speakers will be automatically connected. The green LED on the wireless rear speakers turns on.

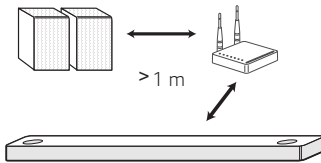
### Manually pairing wireless rear speakers

When your connection is not completed, you can see the red LED on the wireless rear speaker and the speaker does not make sound. Try to connect manually.

- 1 Press **PAIRING** on the rear of the wireless rear speaker.  
(If the green LED does not blink, press and hold the **PAIRING**.)
  - The green LED on the wireless rear speaker blinks quickly.
- 2 Turn on the main unit
  - Pairing is completed. The green LED on the wireless rear speaker turns on.



Set the distance between the sound bar and the wireless rear speakers as close as possible and keep them away from the device (ex. wireless router, microwave oven, etc.) over 1 m to prevent wireless interference.



## Surround Sound On/Off

When you turn on surround function, you can enjoy magnificent surround sound for all the input sound source with rear speakers.



The initial setting for the surround function is OFF; turn the surround function ON to use it.

**Surround On:** Press and hold **↕↕↕** button on the remote control about 3 seconds and then press **↕↕** button repeatedly to select ON - SURROUND in the display window.

**Surround Off:** Press and hold **↕↕↕** button on the remote control about 3 seconds and then press **↕↕** button repeatedly to select OFF - SURROUND in the display window.

## Additional Information

### Specification (Each speaker)

Power requirements	Refer to the main label
Power consumption	Refer to the main label
Dimensions (W x H x D)	Approx. 130.0 mm x 211.5 mm x 191.2 mm (with foot)

Design and specifications are subject to change without notice.

## Declaration of Conformity



Hereby, LG Electronics declares that the radio equipment type ACTIVE REAR SPEAKER is in compliance with Directive 2014/53/EU. The full text of the EU declaration of conformity is available at the following internet address:

<http://www.lg.com/global/support/cedoc/cedoc#>

For consideration of the user, this device should be installed and operated with a minimum distance of 20 cm between the device and the body.

Frequency range	Output power (Max.)
5730 to 5850 MHz	13.35 dBm

