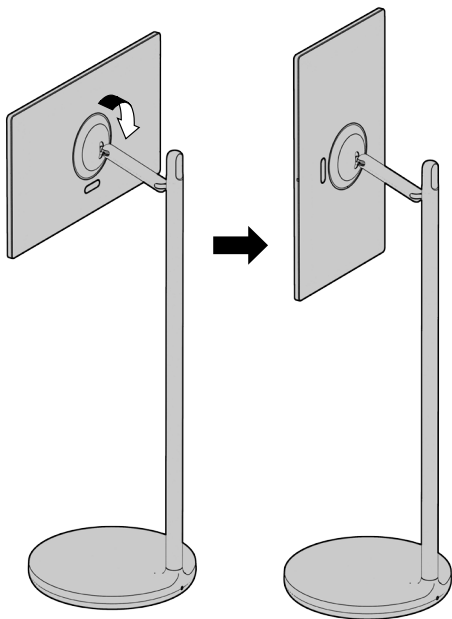


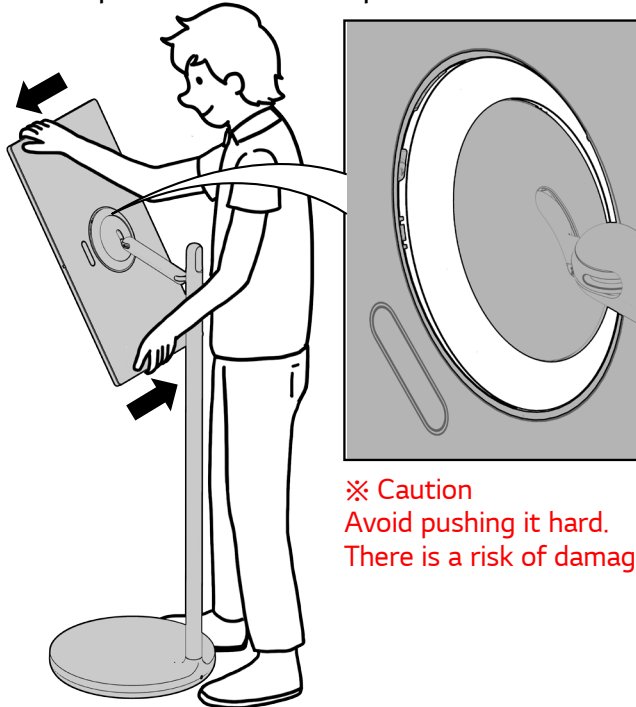
ART10*

Disassembly

1 Position the screen vertically.

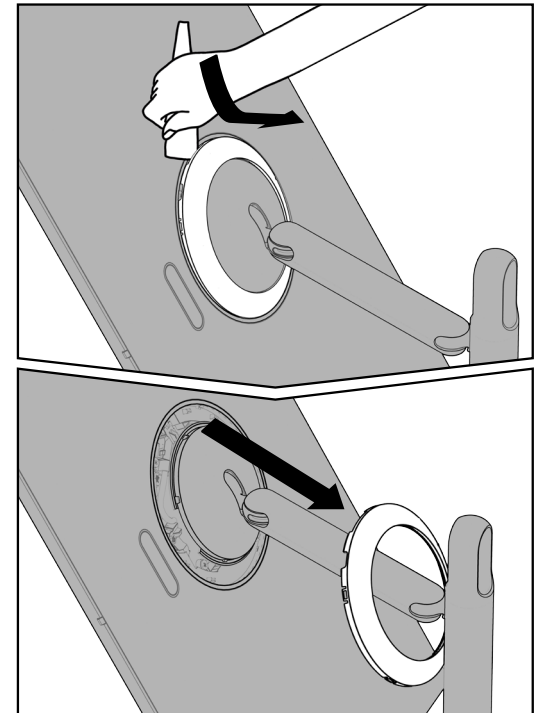


2 Push the top of the screen lightly in the direction of the arrow to disassemble a part of the cover space.

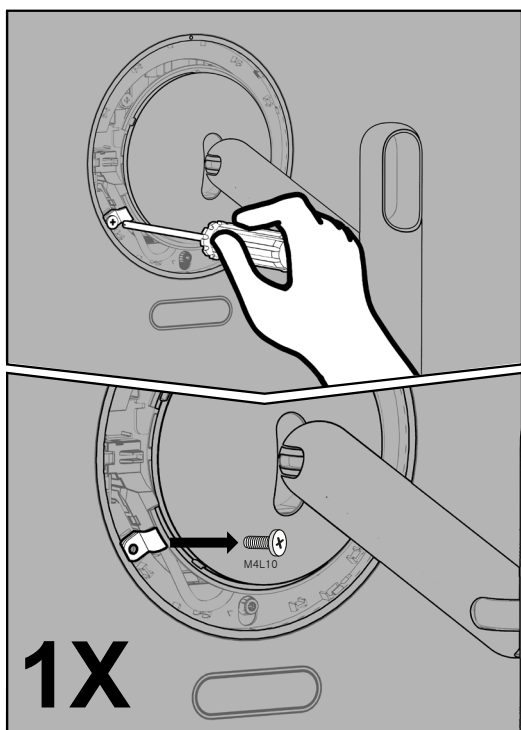


※ Caution
Avoid pushing it hard.
There is a risk of damage.

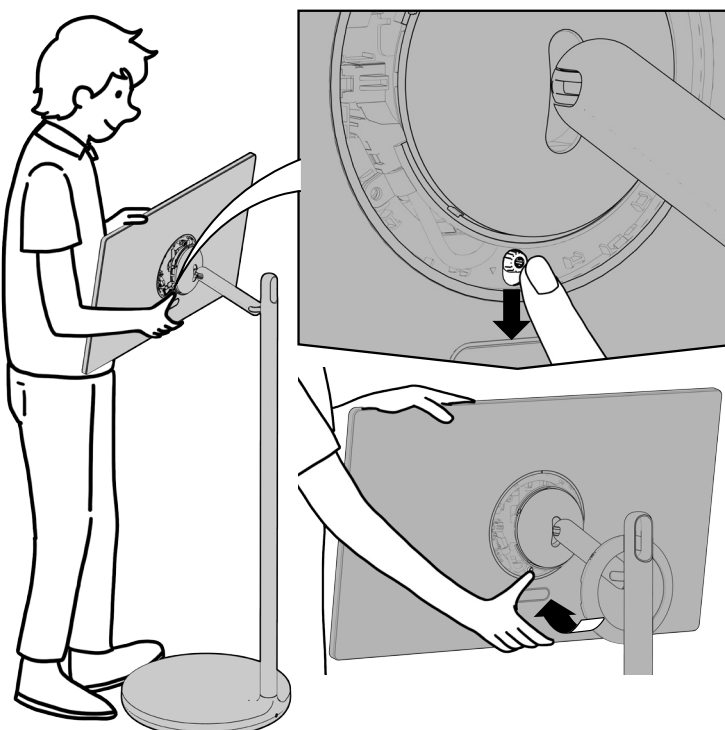
3 Use a wedge or pull it with your hand to completely disassemble the cover.



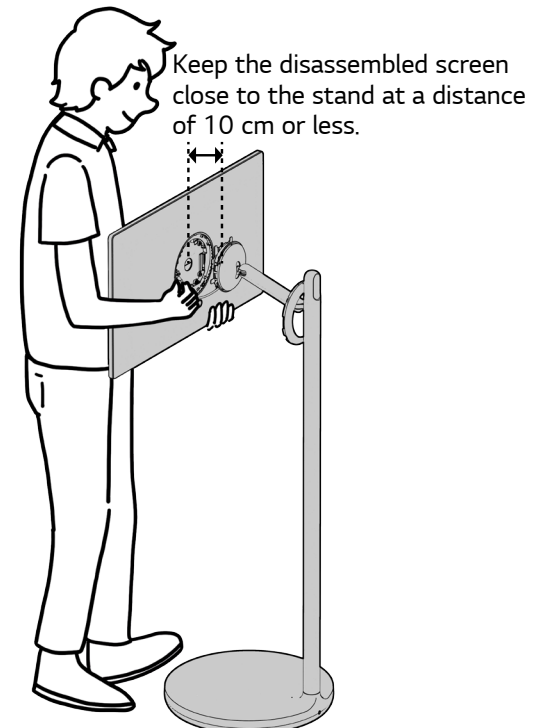
4 Position the screen horizontally and disassemble the cable holder screw.



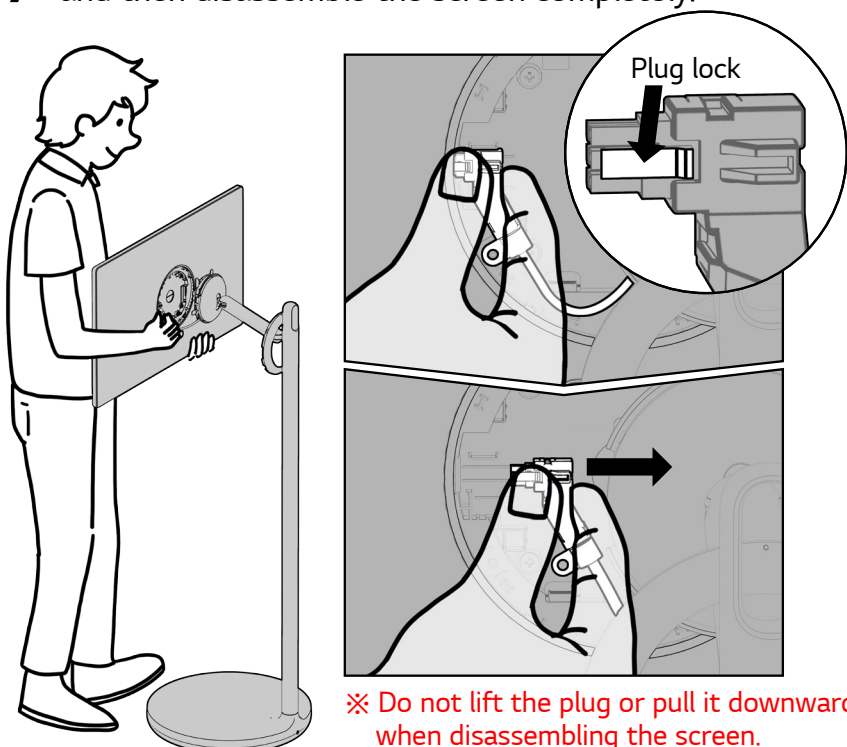
5 Lower the rear lever and push the bottom of the screen forward, as shown in the figure.



6 Lift the screen, separate the top of the screen, and hold the screen.

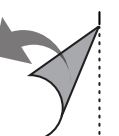
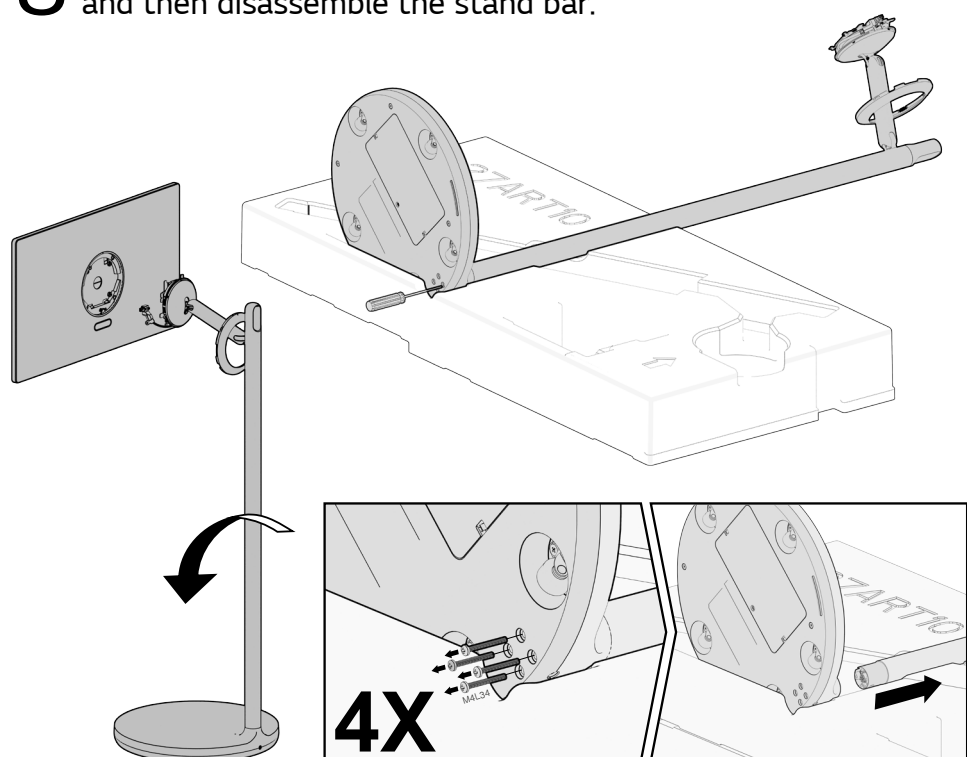


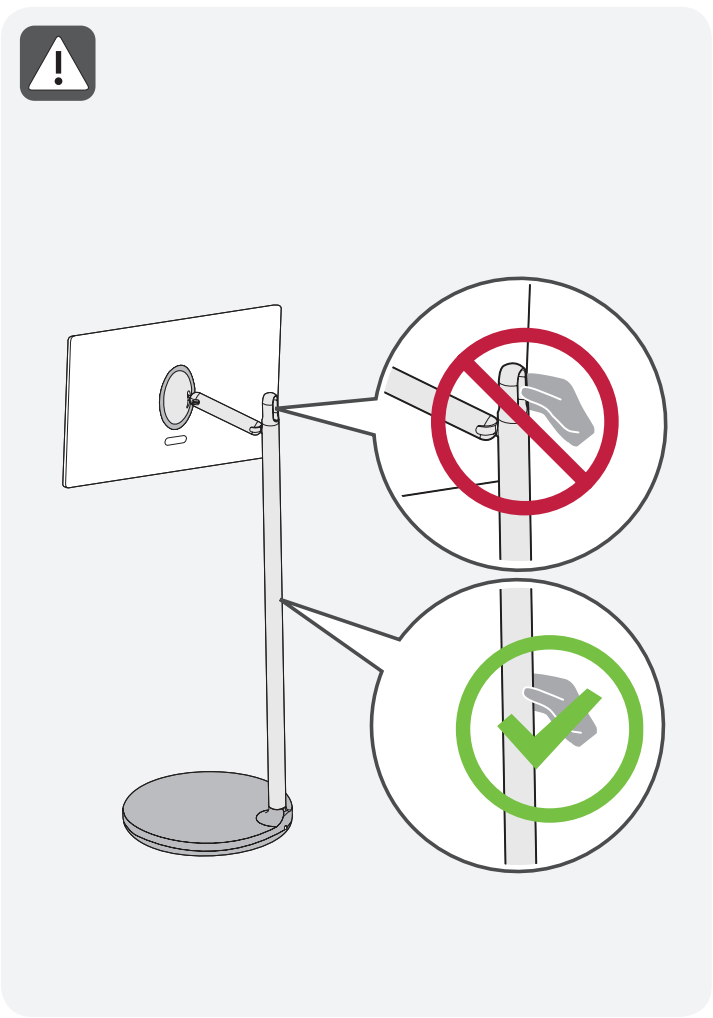
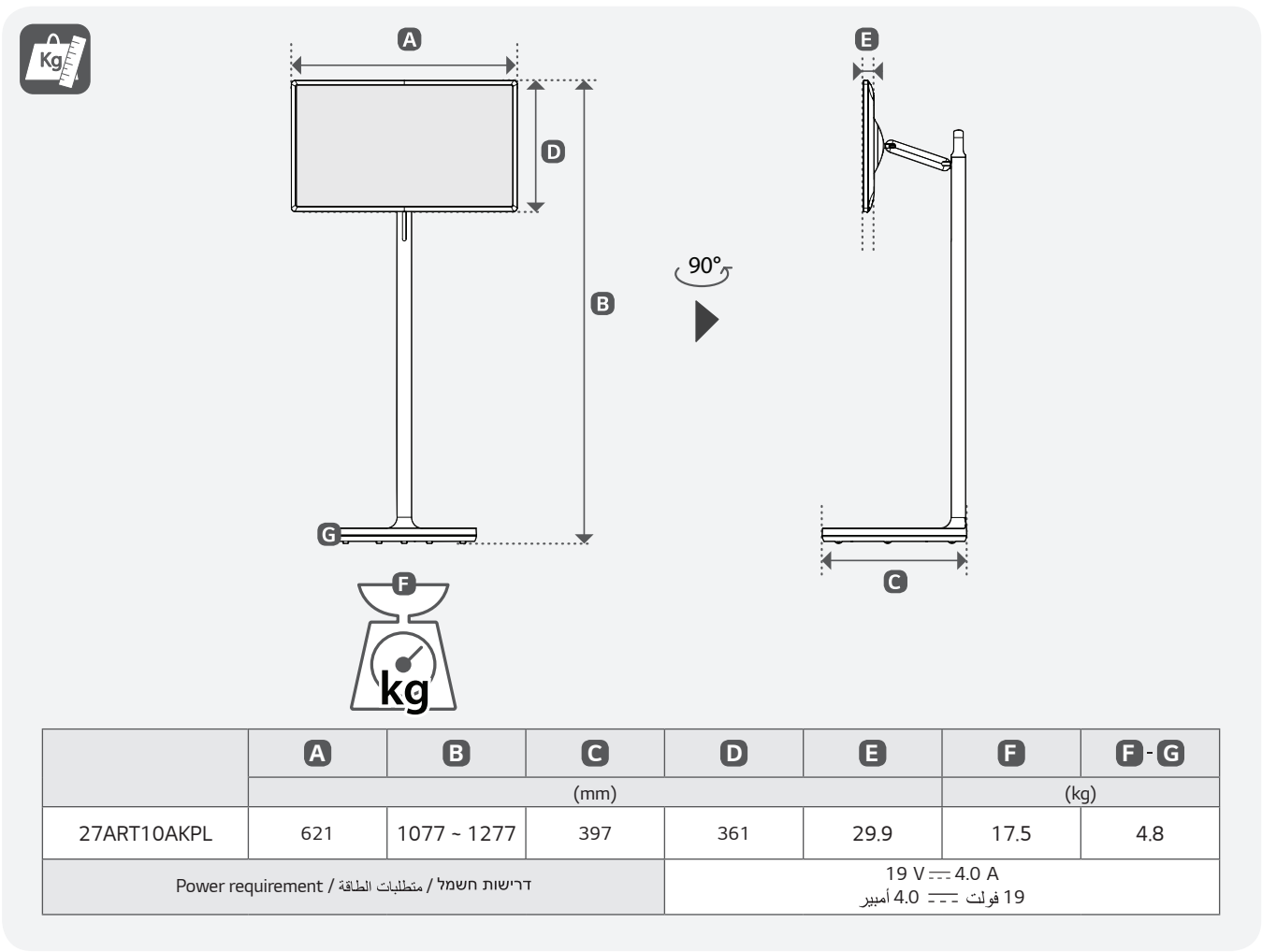
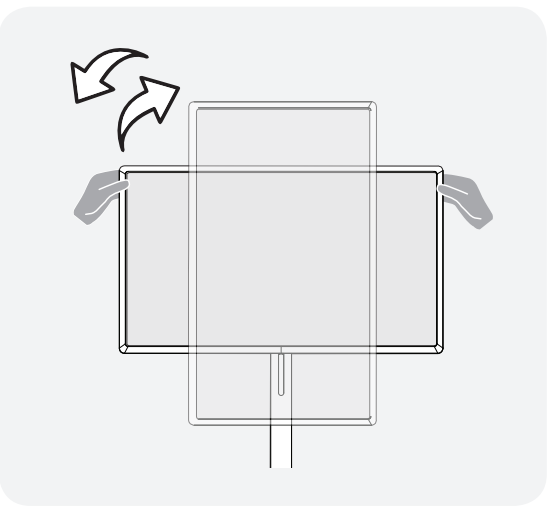
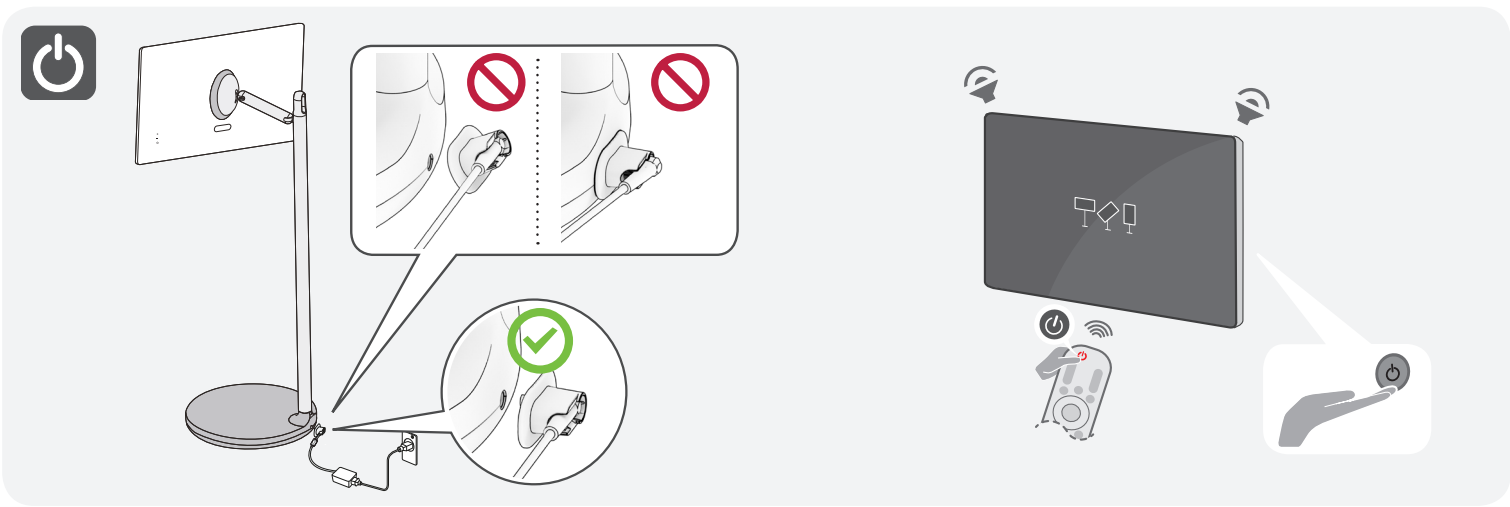
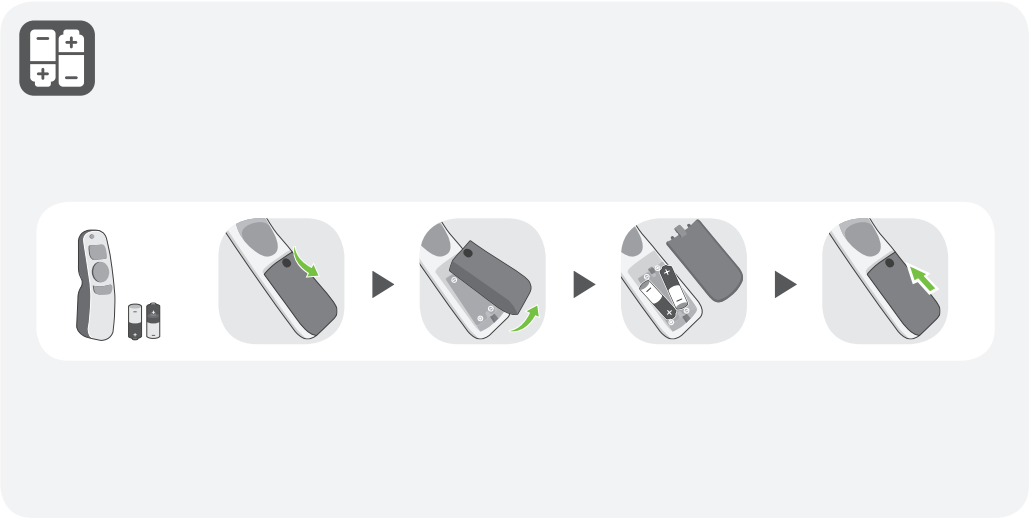
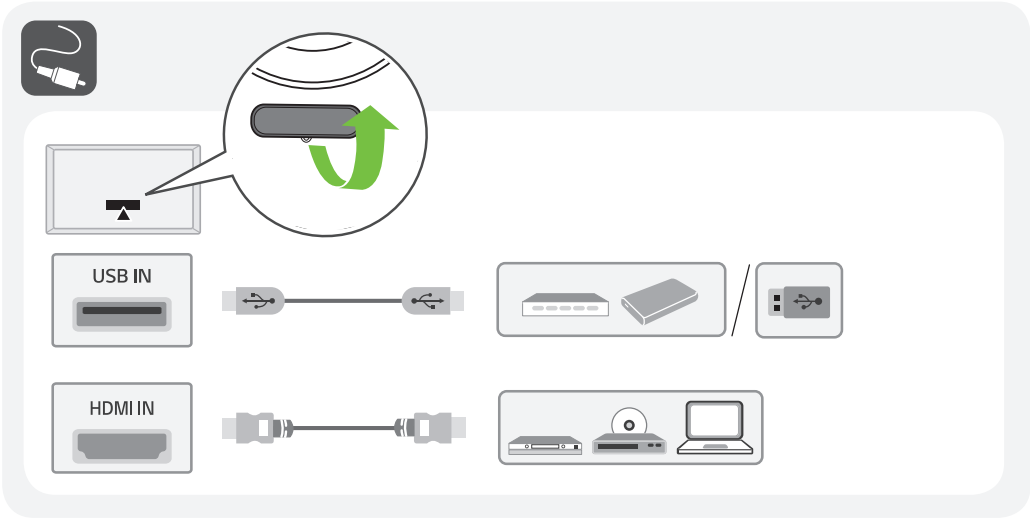
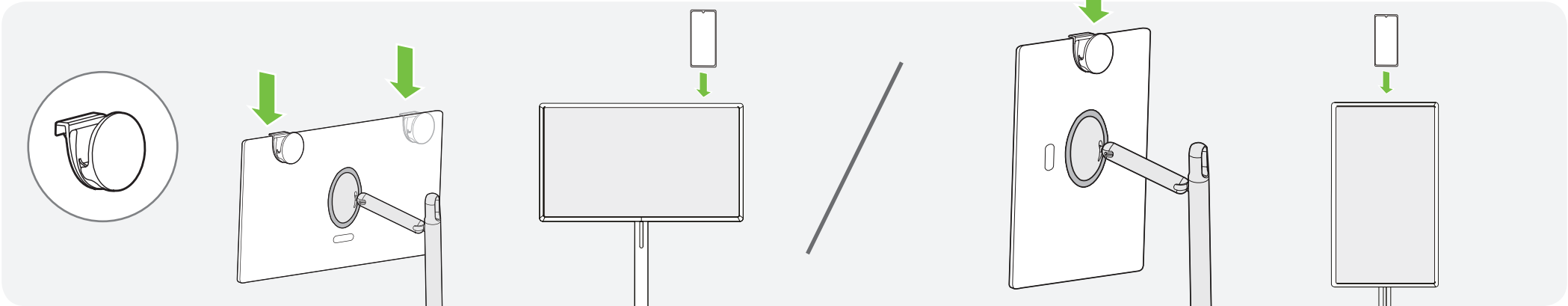
7 Press the plug lock, push it in the direction of the arrow, and then disassemble the screen completely.



※ Do not lift the plug or pull it downward when disassembling the screen.

8 Lay the stand on the box packaging, remove the four screws, and then disassemble the stand bar.





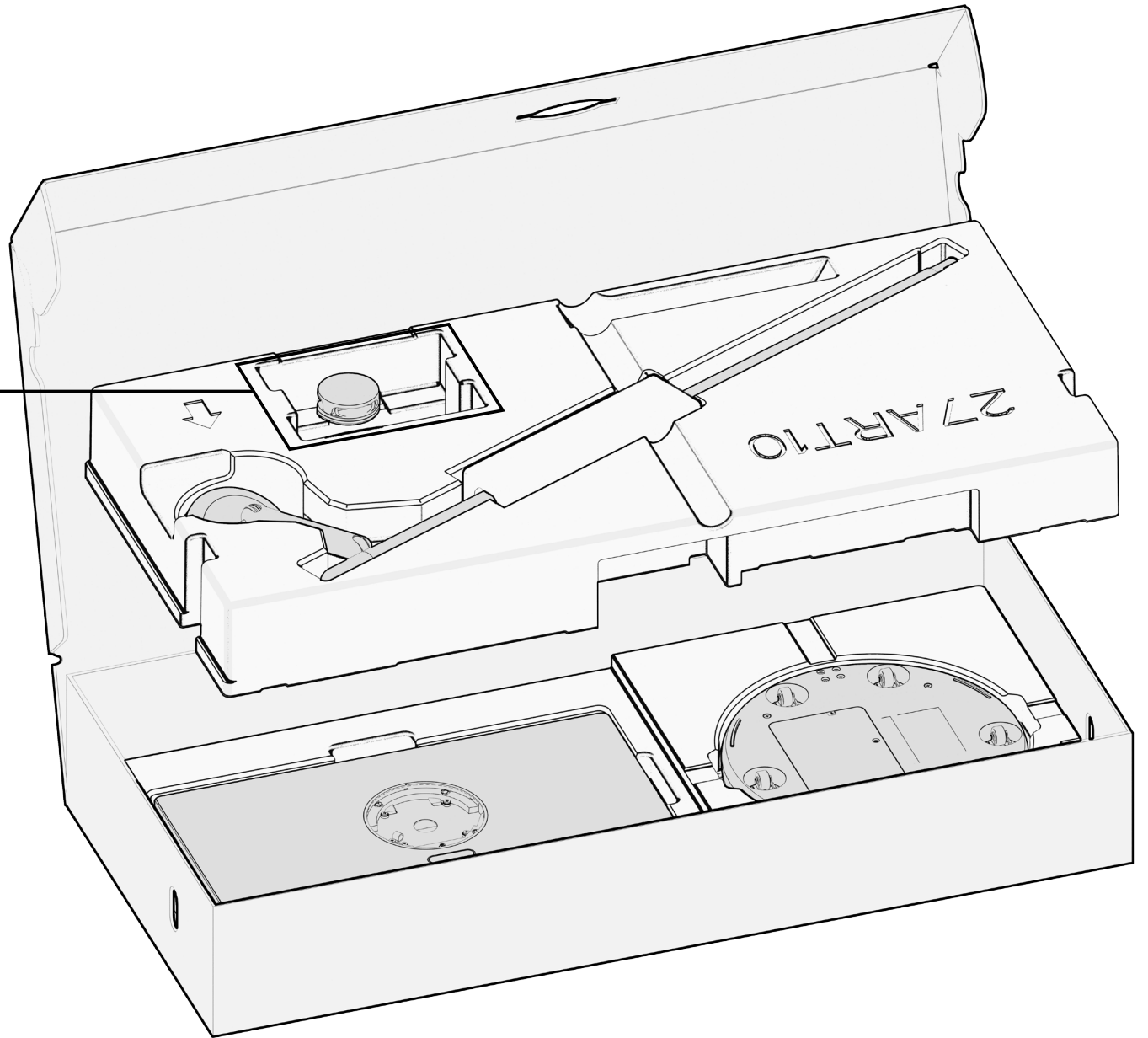
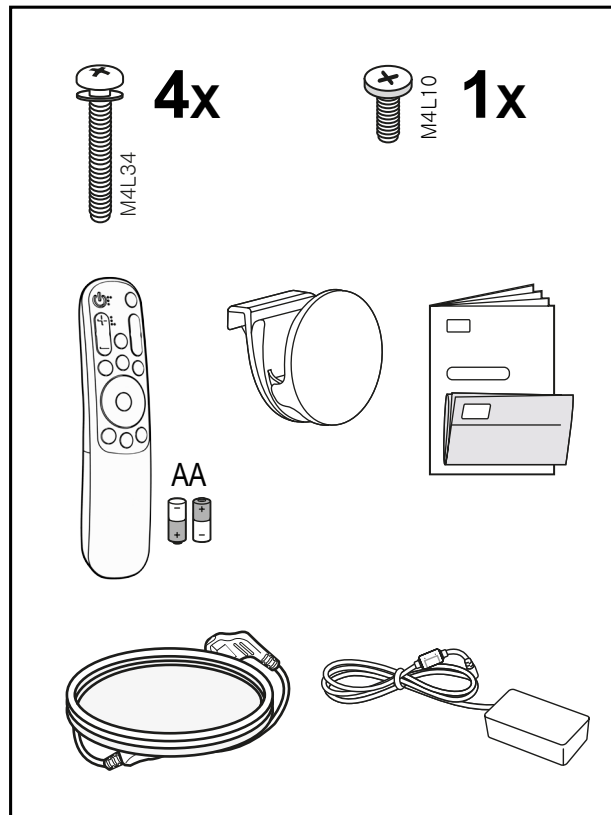
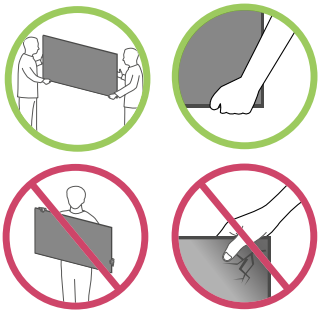
LG StanbyME Installation

www.lg.com

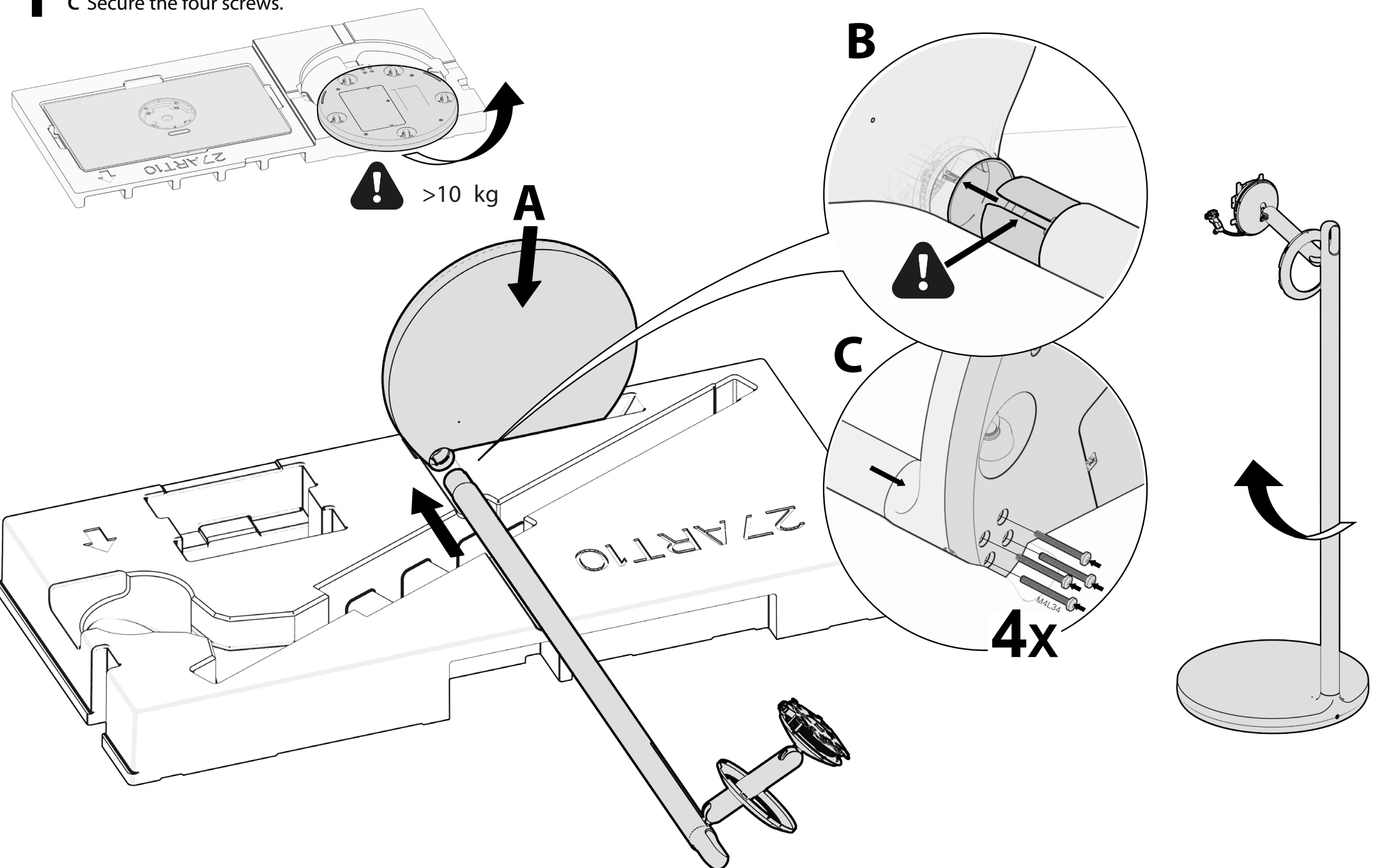


User Install Guide

* M F L 7 1 8 8 4 5 0 2 2 0 1 R E V 0 1 *

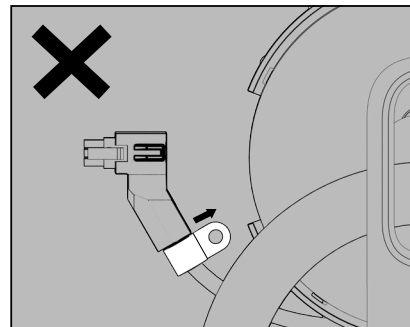
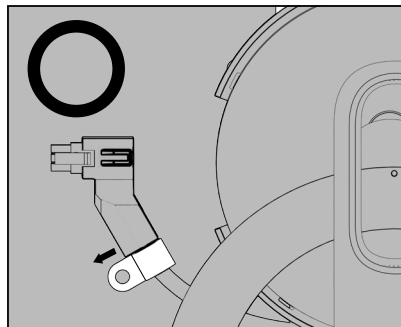
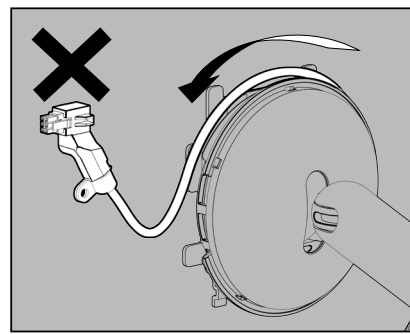
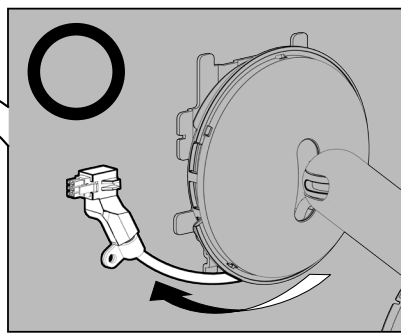
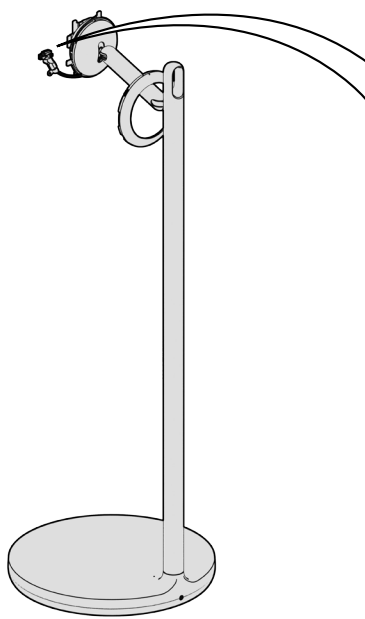
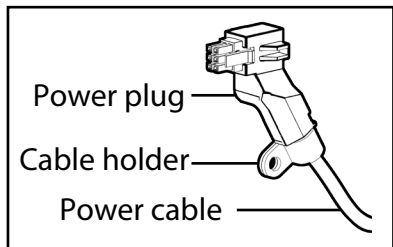


- 1**
- A** Insert the stand base into the styrofoam groove as shown in the figure.
 - B** Insert the bar into the hole of the stand base along the groove until it reaches the parting line.
 - C** Secure the four screws.



2

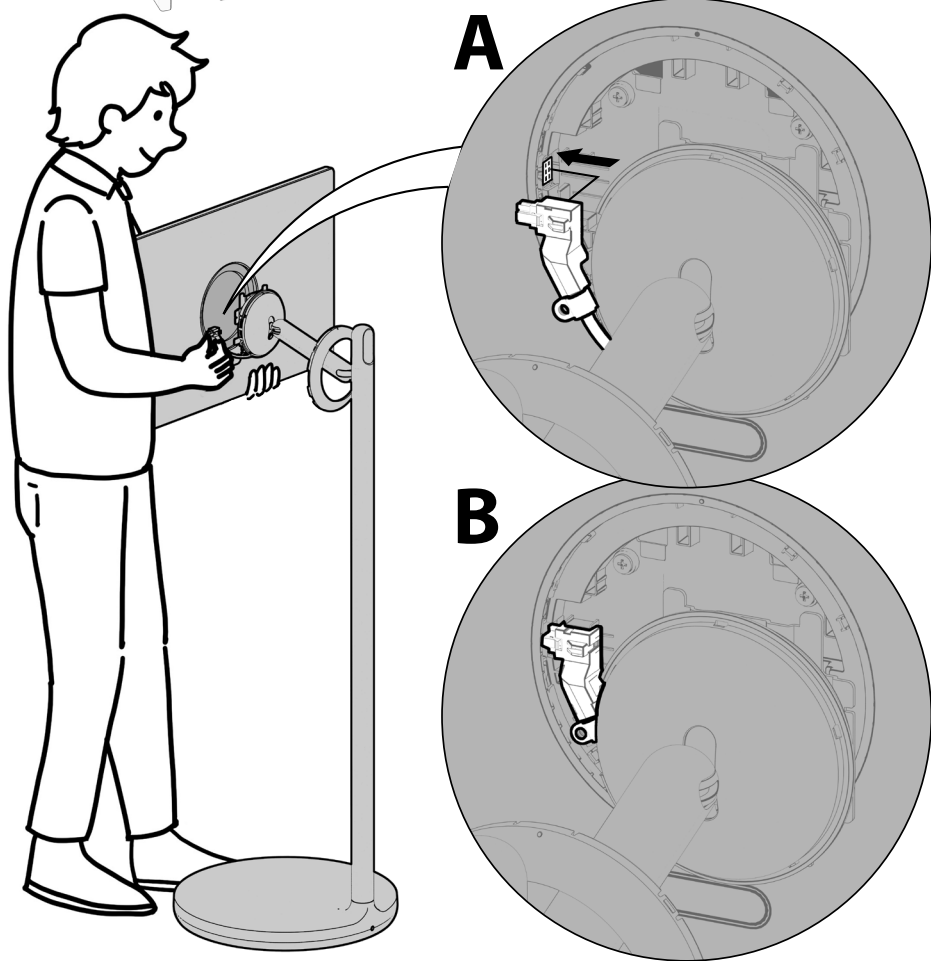
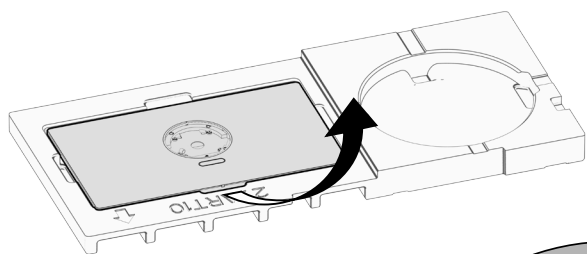
Check the orientation of the power cable and cable holder.



3

Hold the screen and secure the power plug.

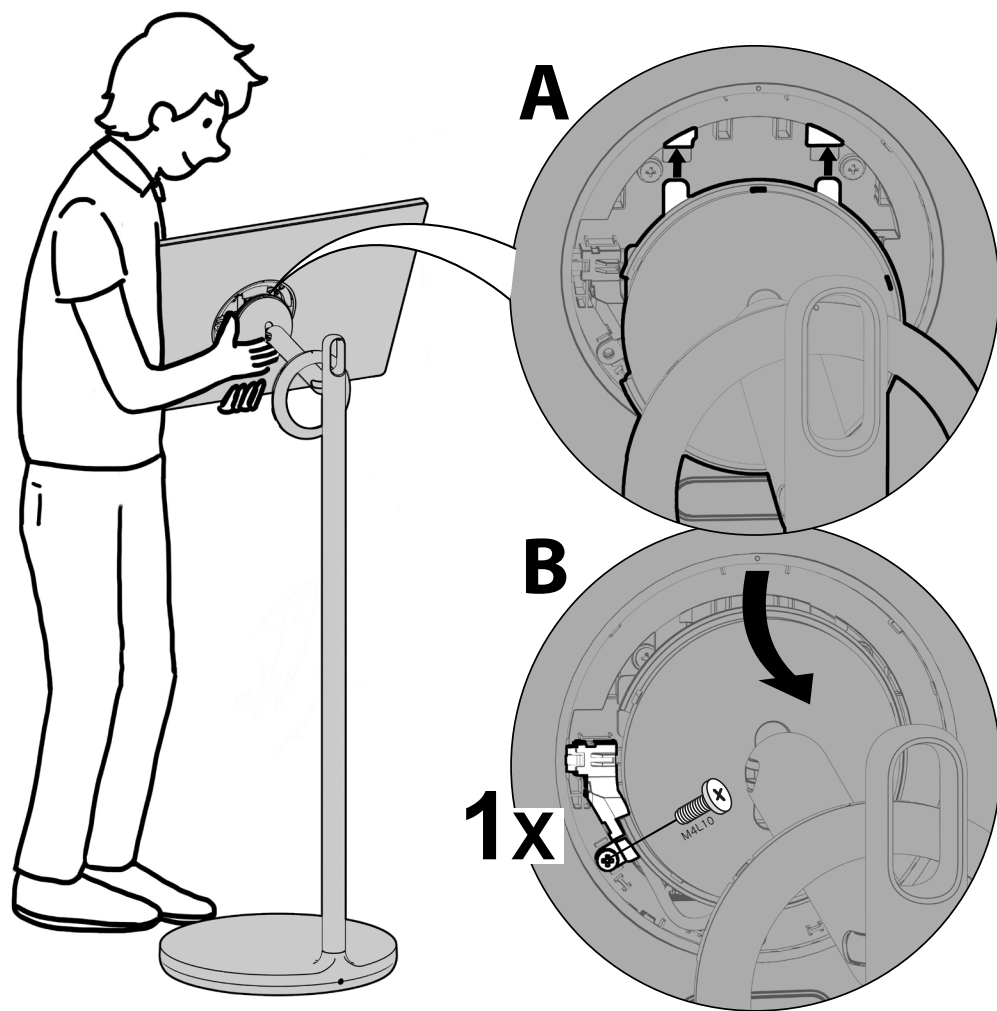
- A Check the position of the power plug on the back cover of the screen.
B Secure it tightly to the back cover side.



4

Secure the screen to the stand.

- A Insert the stand hook into the back cover groove and tighten while pushing the lower part, as shown in the figure. (Push it until you hear a [click] sound.)
B Secure one screw to the cable holder.



5

Secure the ring cover of the stand.

- A Align the screen back cover and ring cover [●mark] and install them.
B Check if it sits tightly as shown in the figure.

