



# SIMPLE MANUAL HIGH POWER SPEAKER SYSTEM

Please read this manual carefully before operating your set and retain it for future reference. To view the instructions of advanced features, visit <http://www.lg.com> and then download Owner's Manual. Some of the content in this manual may differ from your unit.

MODEL  
RK8



MFL69941712

ENGLISH	ČESKY	SLOVENČINA
DEUTSCH	SLOVENČINA	SHQIP
FRANÇAIS	POLSKI	BOSANSKI
NEDERLANDS	ROMÂNĂ	SVENSKA
ITALIANO	LATVIEŠU	DANSK
ESPAÑOL	HRVATSKI	NORSK
ΕΛΛΗΝΙΚΑ	SRPSKI	SUOMI
PORTUGUÊS	БЪЛГАРСКИ	МАКЕДОНСКИ
MAGYAR		

[www.lg.com](http://www.lg.com)

Copyright © 2018 LG Electronics Inc. All Rights Reserved.

### Precautions on handling a battery

- This unit has a built-in lead-acid rechargeable battery. (12 V / 7.2 Ah)
- Do not use the battery in a closed room or near fire.
- Charge the battery under the charging condition specified.
- If any corrosion of the terminals, leakage or deformation of the case of the battery is found, do not use the battery.
- If the battery leaks, while protecting your hands or clothing, remove the battery from the device and should be extremely careful not to infect the skin or eyes.
- If the battery leaks and the liquid inside spills on the skin or clothing, immediately wash it off with plenty of clean water. If the liquid splashes into eyes, immediately flush the eyes with plenty of clean water and consult a doctor.
- Avoid mixed usage of batteries differing in type, manufacturer or history of use.
- Do not throw the battery in fire nor heat the battery.
- Do not short of battery terminals.
- Do not attempt to disassemble, remodel or destroy the battery.
- Do not place the battery near a child.
- The battery can be replaced. If you need to charge your battery more and more frequently, it might be time to replace it. The battery should be serviced by LG Electronics customer care center.
- Charge fully before storing a battery which has not been in use for a long period and turn ON / OFF switch off (OFF). Store the battery in a cool, dry place.
- During storage of the battery, charge it at least once every three months. If the battery is stored for a long period without being charged, its battery life may be shortened.
- The used battery must be recycled or disposed of separately from household waste.

### Declaration of Conformity



Hereby, LG Electronics declares that the radio equipment type High Power Speaker System is in compliance with Directive 2014/53/EU. The full text of the EU declaration of conformity is available at the following internet address:

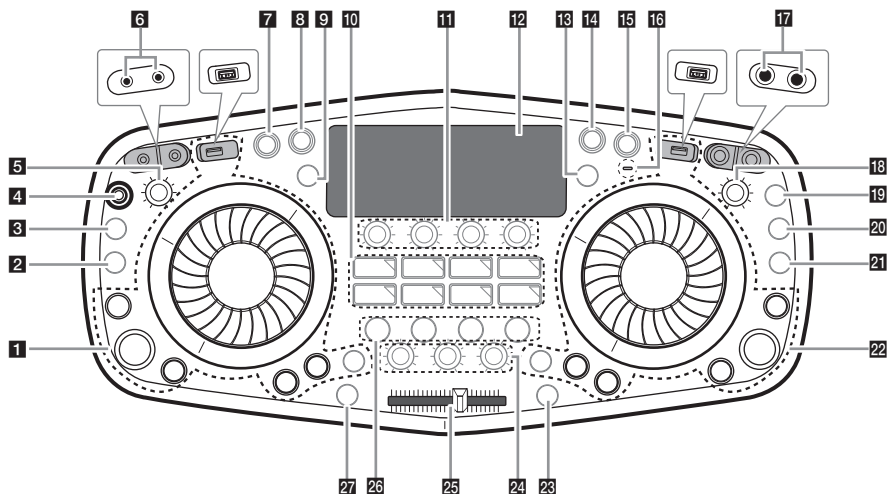
<http://www.lg.com/global/support/cedoc/cedoc#>

For consideration of the user, this device should be installed and operated with a minimum distance of 20 cm between the device and the body.

Frequency range	Output power (Max.)
2402 to 2480 MHz	10 dBm



## Top Panel



### 1 SIDE A/1

#### USB 1 Port

You can play sound files by connecting the USB device.

#### DJ SCRATCH / SEARCH & MULTI knob (1)

- Turns clockwise or counterclockwise to make scratch sound.
- Searches a file or folder.
- Selects lighting mode.
- Chooses a preset number.

#### ⏮ / ⏭ (Skip/Search)

- Skips backward or forward.
- Searches for a section within a file.
- Selects the radio stations.

#### ⏸ (Play / Pause)

- Starts or pauses playback.
- Selects stereo/mono.

#### OK / INFO

- Selects a folder when searching a file.
- Press and hold the **OK/INFO** button to see information about your music. An MP3 file often come with ID3 tag. The tag gives the Title, Artist, Album or Time information.
- Press and hold the **OK/INFO** button to see Bluetooth device name of the unit in BLUETOOTH READY.
- Press and hold the **OK/INFO** button to see the name of connected all Bluetooth device in Bluetooth mode.

#### SEARCH

Searches to the next/previous file or next/previous folder by pressing **SEARCH** repeatedly. (USB 1 only)

#### DJ LOOP

Selects DJ LOOP mode (USB 1 only).  
(DJ LOOP mode can use during USB playback.)

### 2 PRESET

Press to store /search / delete radio stations.  
(Chooses a preset number of a radio station with **DJ SCRATCH / SEARCH & MULTI** knob.)

### 3 H/P MODE

Press to select a headphone monitor mode.

### 4 ANTENNA (FM)

### 5 H/P VOLUME

Adjusts headphone's volume.

### 6 (Headphone) jack

**PORT. (Portable) IN** jack

### 7 (Standby)

Turns the power on or off.

### 8 USB REC / DEMO

- Records to USB.
- To stop recording, press and hold for 3 seconds.
- In power off status, if you press **USB REC / DEMO**, show DEMO mode.

### 9 LIGHTING


- Selects the lighting effects.
- Press and hold to turn on / off the Flash Lighting.

### 10 / CLUB, / DRUM, / USER (DJ PRO)

Selects CLUB, DRUM or USER sound effect to mix.  
(If you want to use USER, you have to register a source with "Music Flow Bluetooth" app.)

**1, 2, 3, 4, 5, 6, 7, 8** (DJ PRO PAD)

Press a desired sound pad.

- 11 DJ EFFECT LEVEL**  
Selects a desired DJ EFFECT LEVEL.
- BASS / MIDDLE / TREBLE (USER EQ)**  
Selects the sound effect created by your own.
- 12** Display window
- 13 AUTO DJ / REPEAT**  
Selects the AUTO DJ mode or listens to the files repeatedly or randomly.
- 14 F (Function)**  
Selects the function and input sources.
- 15**  **WIRELESS LINK**  
- Selects MAIN or OTHER on WIRELESS PARTY LINK mode.  
- Enable or disable WIRELESS PARTY LINK mode.
- 16 CHARGE**  
Battery charging indicator
- 17 MIC (Microphone) 1 / 2** jack
- 18 MIC (Microphone) VOLUME**  
Adjusts microphone volume.
- 19 ECHO**  
Selects ECHO mode.
- 20 VOCAL EFFECTS**  
Selects VOCAL EFFECTS mode.
- 21 VOICE CANCELLER**  
You can reduce the vocal tones during music playback from various input sources.
- 22 SIDE B/2**
- USB 2 Port**  
- You can play sound files by connecting the USB device.  
- You can charge the mobile device through this port.



- The mobile device can be charged only in standby mode.
- Some of the mobile devices may not be charged.

**DJ SCRATCH / SEARCH & MULTI knob (2)**

- Turns clockwise or counterclockwise to make scratch sound.
- Searches a file or folder.
- Selects lighting mode.
- Chooses a preset number

**⏮ / ⏭ (Skip/Search)**

- Skips backward or forward.
- Searches for a section within a file. (USB 2 only)

**⏸ (Play / Pause)**

Starts or pauses playback. (USB 2 only)

**OK / INFO**

- Selects a folder when searching a file.
- Press and hold the **OK/INFO** button to see information about your music. An MP3 file often come with ID3 tag. The tag gives the Title, Artist, Album or Time information.
- Press and hold the **OK/INFO** button to see Bluetooth device name of the unit in BLUETOOTH READY.
- Press and hold the **OK/INFO** button to see the name of connected all Bluetooth device in Bluetooth mode.

**SEARCH**

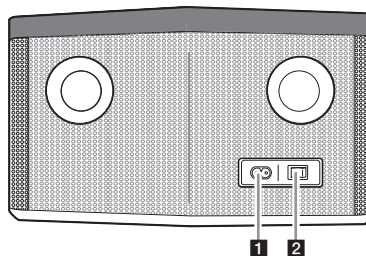
Searches to the next/previous file or next/previous folder by pressing **SEARCH** repeatedly (USB 2 only).

**DJ LOOP**

Selects DJ LOOP mode (USB 2 only).  
(DJ LOOP mode can use during USB playback.)

- 23 MIX**  
Mixes audio sound.
- 24 TEMPO A / B**  
Adjusts TEMPO in USB function.
- MASTER VOL.**  
Adjusts speaker volume.
- 25 CROSS FADER**  
Adjusts the sound volume of mixing files when using MIX on by pressing the **MIX**.
- 26 SOUND EFFECT / BASS BLAST**  
- Chooses sound impressions.  
- Press and hold to select BASS effect directly.
- DJ EFFECT**  
Selects a desired DJ EFFECT.
- USER EQ**  
Selects the sound effect created by your own.
- KEY CHANGER**  
Changes the key to suit your vocal range.
- 27 AUTO SYNC**  
When using MIX, you can synchronize the tempo of audio files being played in USB 1 and USB 2 by pressing **AUTO SYNC**.

## Rear Panel



- 1** AC in socket



Fully charge the device before using.

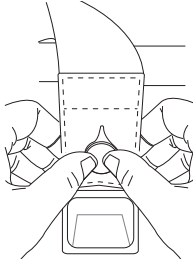
- 2** **Battery ON / OFF** switch

Switches the battery ON or OFF  
(Battery can be charged even when this unit is in off (OFF) status.)

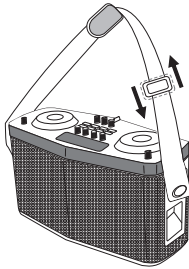
## Carrying the unit

The unit has strap so you can easily move the unit.

1. Fit a strap in the hook of the unit.



2. Adjust the strap length.





Be careful it does not drop the unit when you carry it.

## Additional Information

### Specifications

#### General

Power Requirements	Refer to the main label on the unit.
Power Consumption	Refer to the main label on the unit.
Dimensions (W x H x D)	Approx. 455 mm x 242 mm x 206 mm
Bus Power Supply (USB)	(USB 1) 5 V  500 mA
	(USB 2) 5 V  1 A
Amplifier (Total RMS output power)	100 W RMS
	50 W RMS (Only using the battery)

#### Battery

Battery type	12 V / 7.2 Ah (Lead-Acid rechargeable battery)
Operating time	Approx. 10 hours (Based on fully charging the battery, continuous playback using 50 % volume level and lighting off status, EQ: Standard) It may vary depending on the battery status and operational conditions.
Charging time	Approx. 14 hours It may vary depending on the battery status and operational conditions.

Design and specifications are subject to change without notice.

### Controller App



Download the **Music Flow Bluetooth** App to your device. (Android only)

### LG Sound Sync (Wireless)



For more information, download the online owner's manual. <http://www.lg.com>

