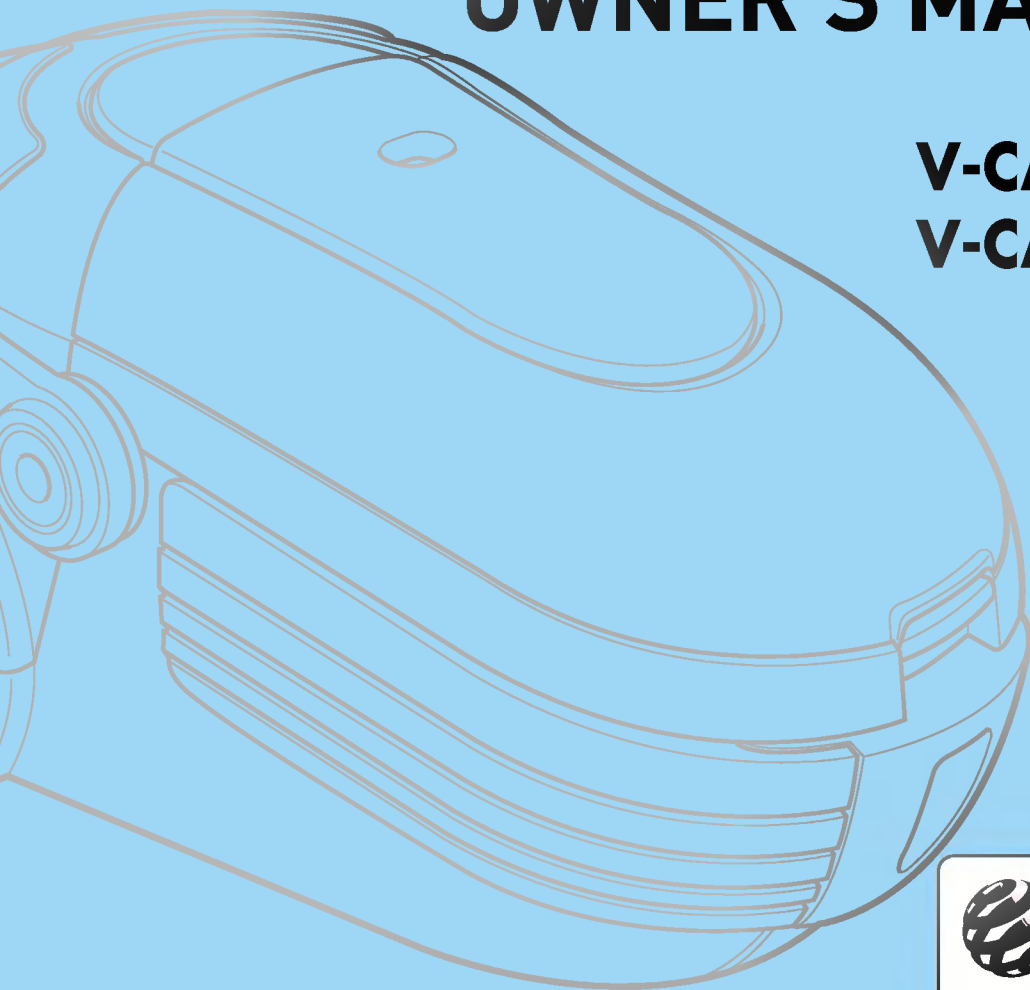


OWNER'S MANUAL

V-CA504CEU
V-CA504CT



reddot design award
winner 2003

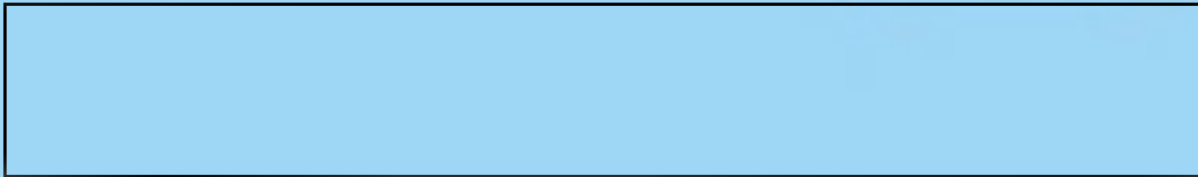




Table of contents

Information for Your Safety 3

How to Use 4

 Assembling cleaner 4

 Using the and Accessory Nozzles..... 6

 How to use elbow tube, Air turbine brush..... 8

 Changing Dust Bag..... 9

 Operation..... 9

 How to Plug in and use..... 9

 Adjusting the Suction level..... 10

 Park-System..... 10

 Cleaning the Exhaust Filter..... 11



Information for Your Safety

Please read all the following information, which contains important instructions for the safety, the use and the maintenance of the appliance.

This appliance complies with the following EC Directives: -73/23/EEC, 93/68/EEC-Low Voltage Directive-89/336EEC -EMC Directive.

Never allow children to use the appliance unsupervised.

Do not use the appliance if the power cord is damaged or faulty.

If the power cord is damaged, it must be replaced by an approved LG Electronics Service Agent to avoid a hazard.

Always switch the vacuum cleaner off before:

- Cleaning or changing the filters.

Do not vacuum flammable or explosive substances(liquids or gases).

Do not vacuum hot ash, embers etc. nor sharp objects.

Do not vacuum water or other liquids.

Do not unplug by pulling on cord.

Use only LG's recommended filters.

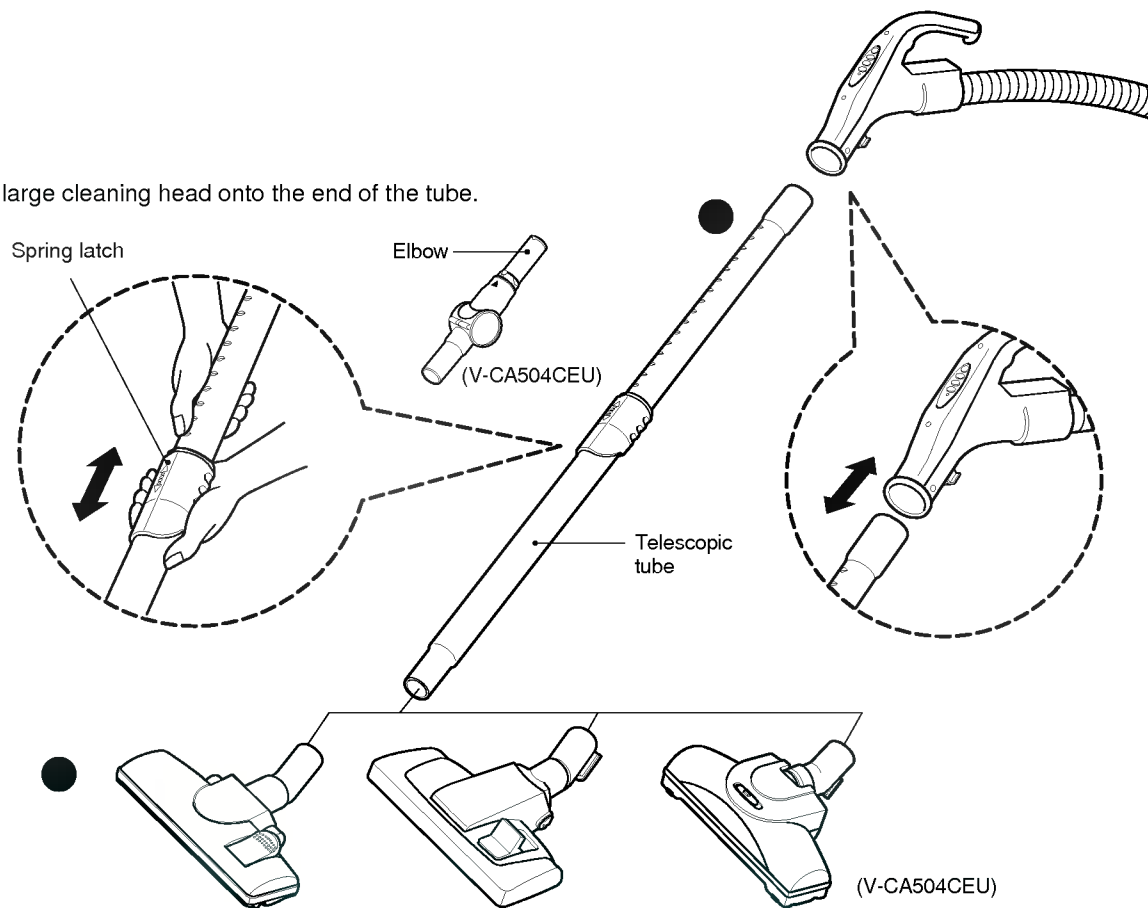
When you vacuum with an attachment appliance that has a rotating brush roller:

- Do not reach into the running brush roller.

Thermal protector: This vacuum cleaner has a special thermostat that protects the cleaner in case of motor overheating. If the cleaner suddenly shuts off, turn off the switch and unplug the cleaner. Check the cleaner for a possible source of overheating such as a full dust chamber, a blocked hose or clogged filter. If these conditions are found, fix them and wait at least 30 minutes before attempting to use the cleaner. After the 30 minutes period, plug the cleaner back in and turn on the switch. If the cleaner still does not run, contact a qualified electrician.

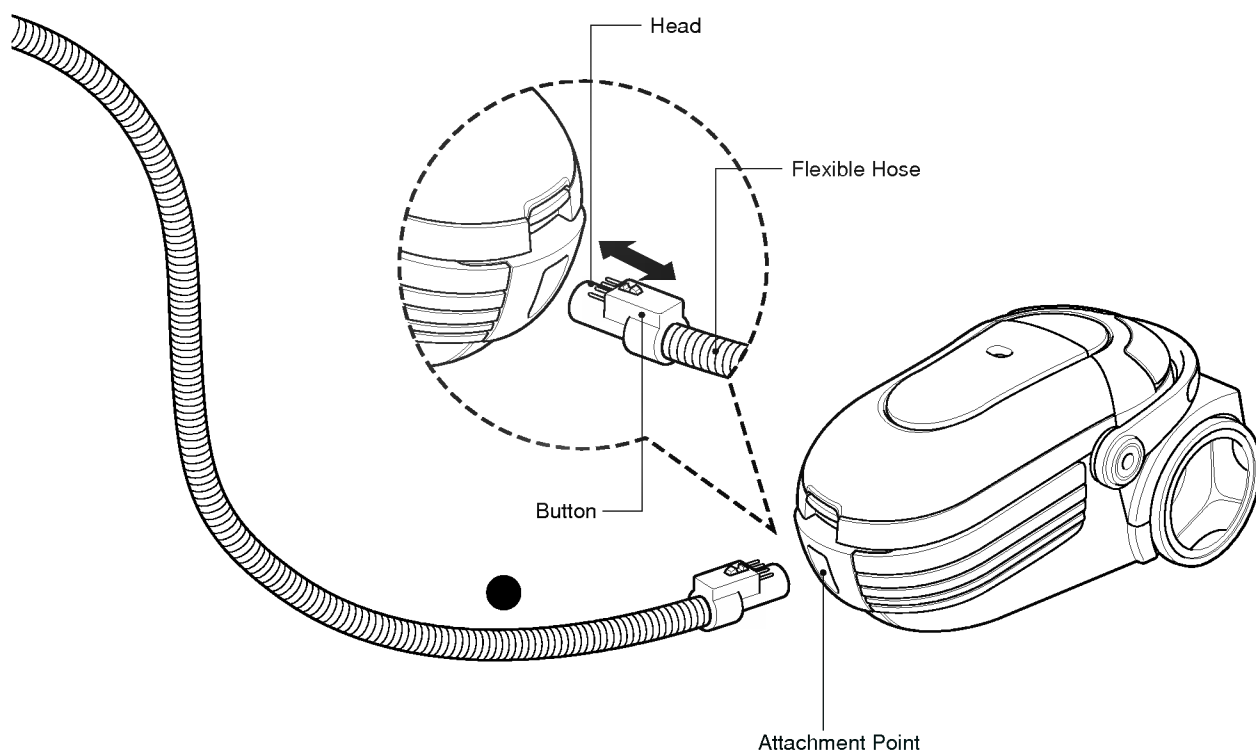
How to Use Assembling Cleaner

Fit the large cleaning head onto the end of the tube.



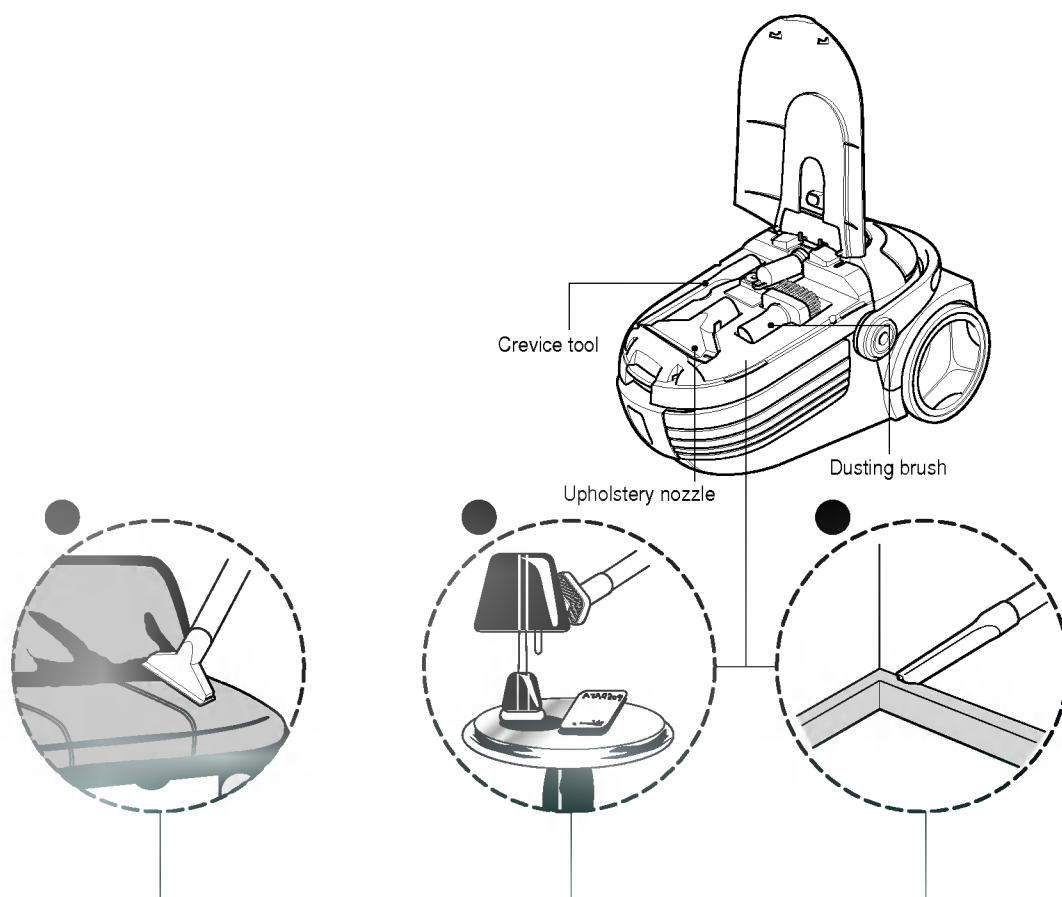
Push telescopic tube into nozzle outlet.

- Press the spring latch to release.
- Pull out the tube to the desired length.
- Release spring latch to lock the tube in position.
- Push telescopic tube into hose handle firmly.



- Push the end of the head on the flexible hose into the attachment point on the vacuum cleaner.
- To remove the flexible hose from the vacuum cleaner, press on the button situated on the head, then pull the head out of the vacuum cleaner.

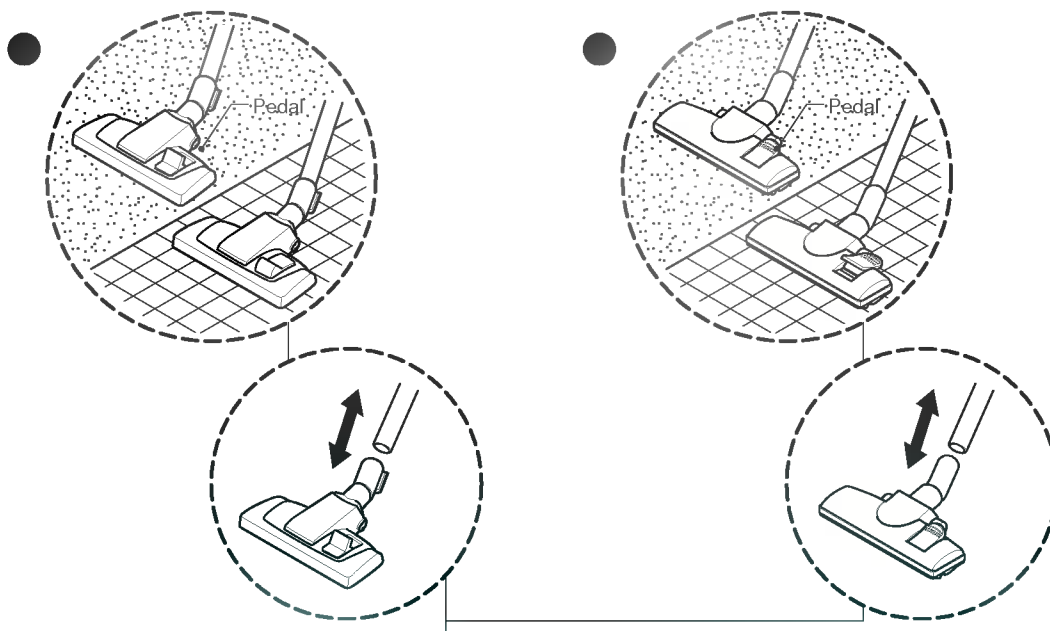
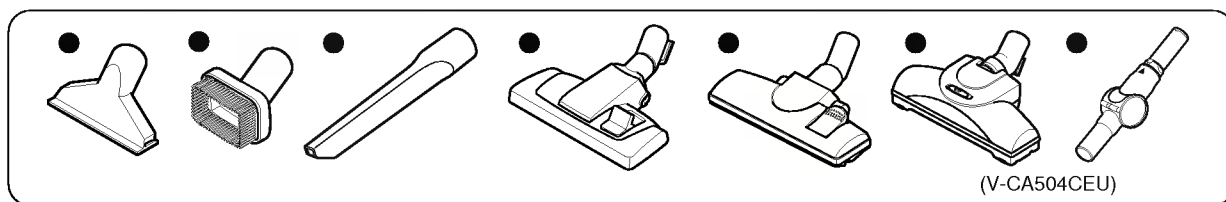
How to Use Using the Accessory Nozzles



Upholstery Nozzle is for vacuuming upholstery, mattresses, etc. The thread collectors help to pick up the threads and fluff.

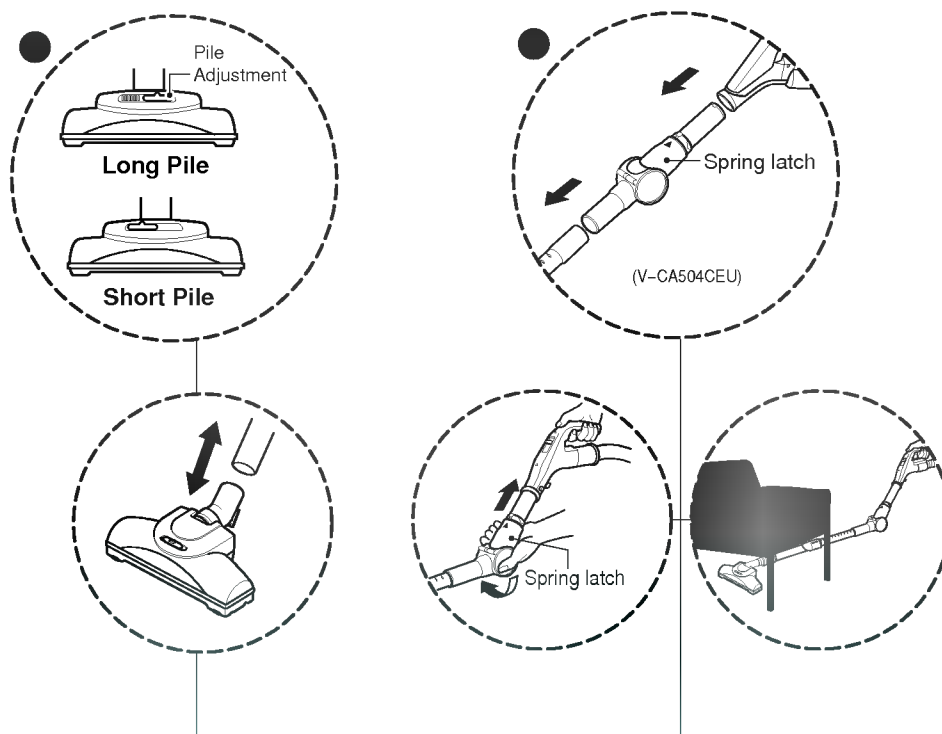
Dusting Brush is for vacuuming picture frames, furniture frames, books and other irregular surfaces.

Crevice Tool is for vacuuming in those normally hard-to-reach places such as reaching cobwebs, or between the cushions of a sofa.



- **The 2 position cleaning head**
equipped with a pedal which allows
you to alter its position according to
the type of floor to be cleaned.
- **Hard floor position**
(tiles, parquets floor)
Press the pedal to lower brush.
- **Carpet or rug position**
Press the pedal to lift the brush up.

How to use elbow tube, Air turbine brush (V-CA504CEU)

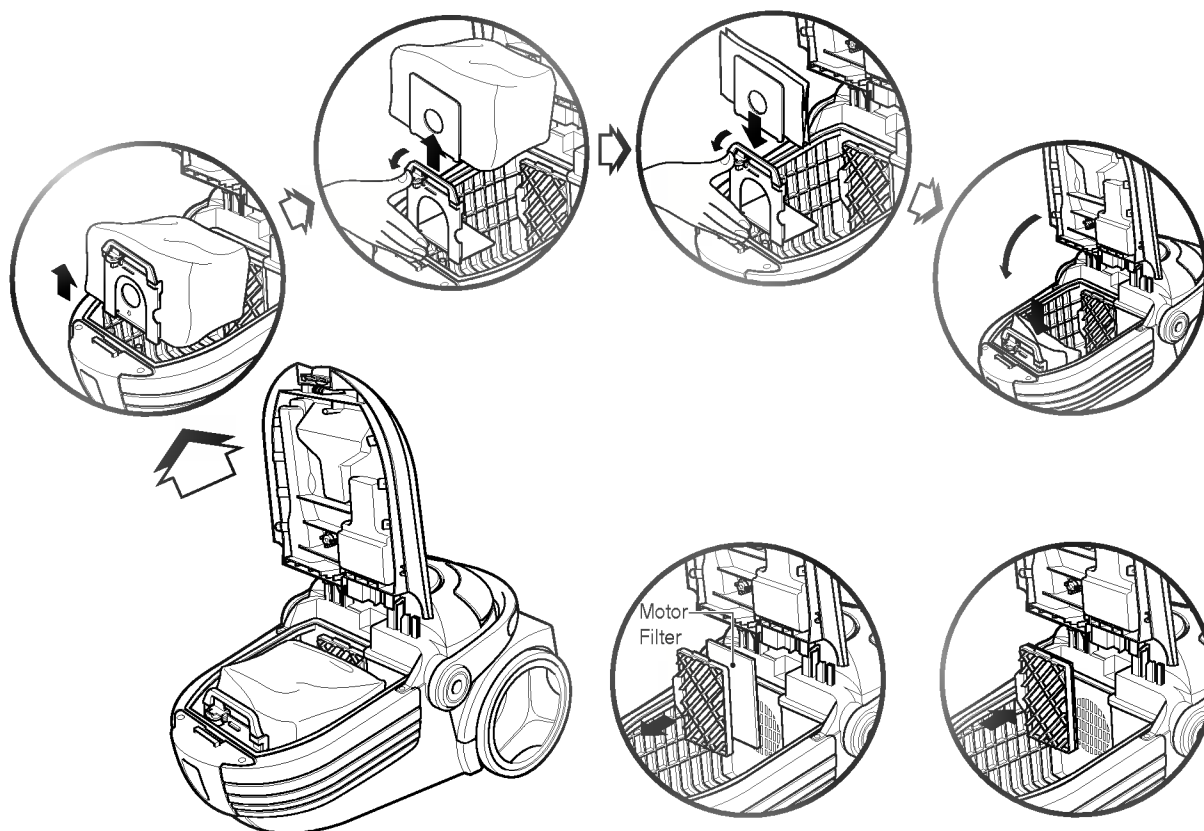


- Slide the Pile Adjustment to the right for long pile and to the left for short pile

Elbow tube is for cleaning under the sofa, table and bed easily.

- Connect the elbow tube to the flexible hose and, connect the telescopic tube to the elbow tube. (You can also connect the telescopic tube to the flexible hose without the elbow tube.)
- If you pull the spring latch, the elbow tube is bended.
- If you stretch the elbow tube, it is returned to its position.

How to use Changing dust bag



The dust bag needs changing when the cleaner is set to maximum power and the cleaner head is off the floor but the "bag full" indicator window is completely coloured red.

Even if the dust bag does not appear to be full at this stage, it should be changed.

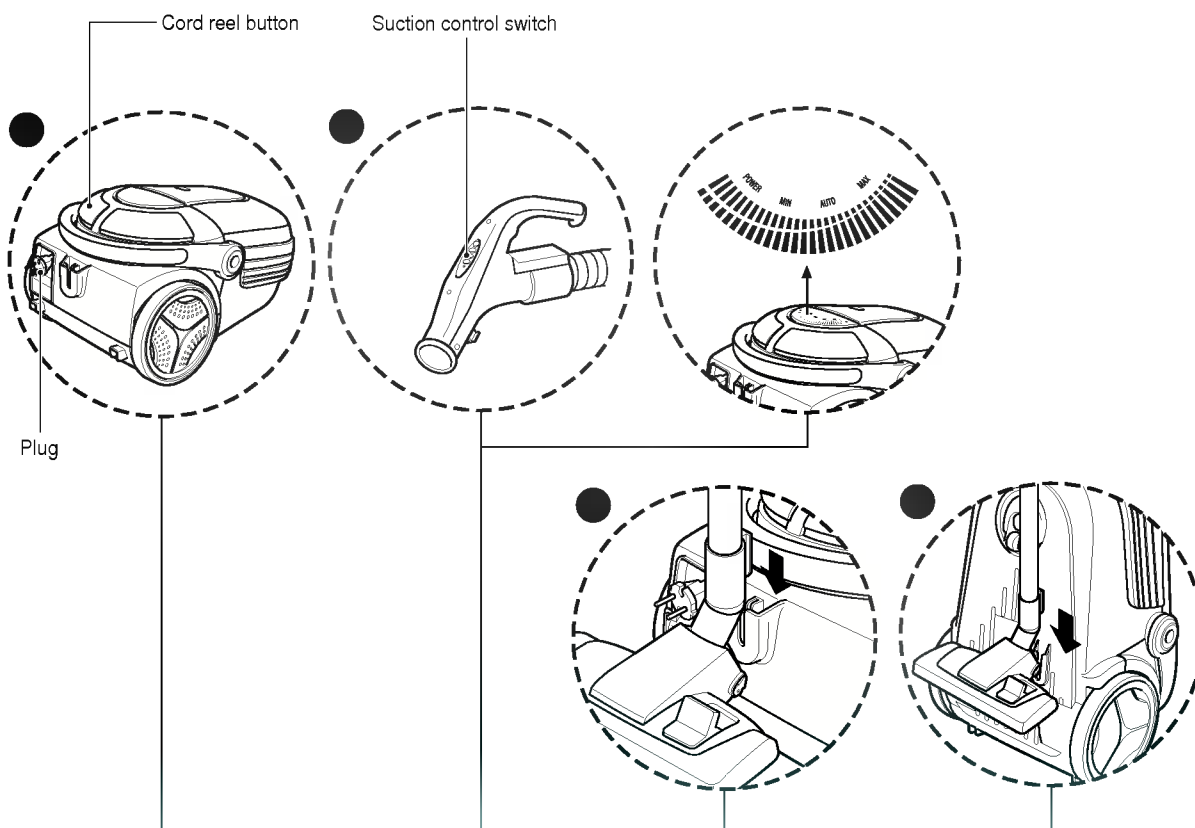
It could be that a great deal of very fine dust has clogged up the pores of the dust bag.

- Turn off the appliance and unplug it.
- Push the button and open the cover.
- Your appliance is equipped with either a paper dust bag or a fabric dust bag.
- Pull the handle up.
- Push the yellow button and remove the old dust bag.
- Insert the new dust bag.
- **If your appliance is fitted with a fabric dust bag** follow the same instructions as above. Empty it and replace it. Do not wash it.

Note: as the appliance is fitted with a safety device which checks that the dust bag is in place you cannot close the lid if the dust bag is not fitted correctly.

The motor filter is situated inside the appliance between the dust bag and the motor. Each time that you change the air outlet filter we advise you to remove the motor filter and to clean it by tapping to remove the dirt and then replacing it in the vacuum cleaner.

Operation



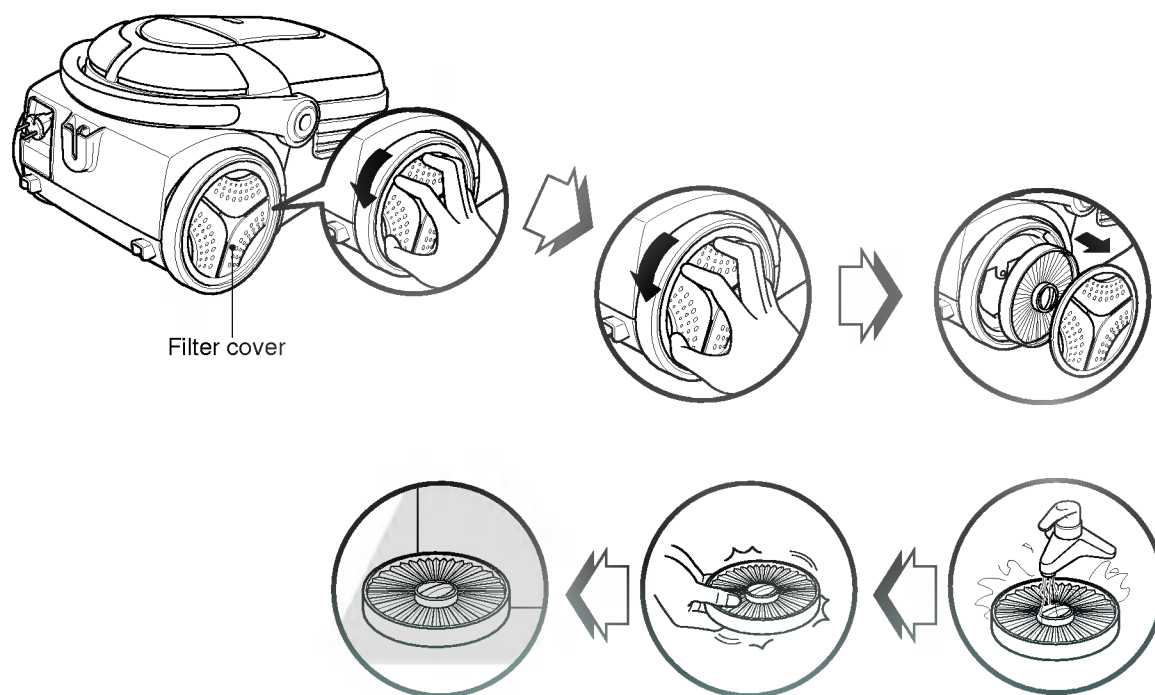
- Pull out the power cord to the desired length and plug into the socket.
- Push the suction control switch of the hose handle in the direction of the position what you want.
- To stop it, push down the suction control switch in the direction of OFF.
- Press the cord reel button to retract the power cord after use.

- Adjust the power by using the power control switch in the handle.
- When you press the button that you desire, the light comes on.
- If you press the Auto button, the power is automatically adjusted by the amount of dust.

- To store after vacuuming and pause while vacuuming.
- For deposit after vacuuming, for example to move a small piece of furniture or a rug, use the Park system to support the flexible hose and cleaning head.
 - Slide the hook on the large cleaning head into the slot on the rear of the dust chamber.

- When you have switched off and unplugged
- The appliance, press on the button to automatically rewind the cord.
- You can store your appliance in a vertical position by sliding the hook on the large cleaning head into the clip on the underside of the appliance.

Cleaning the Exhaust Filter



- The exhaust filter is a washable reusable HEPA filter.
 - To change the exhaust filter, remove the filter cover on the body by release hook.
 - Pull out the exhaust filter.
 - Clean it with cold, running water.
- Do Not use the brush
- Using the brush will cause permanent damage and allow dust to bypass the filter.
 - Allow exhaust filter to dry in a shaded location for a day or two until completely dry.
 - The exhaust filter should be cleaned at least once a year.

What to Do if Your Vacuum Cleaner Does Not Work:

Check that the vacuum is plugged in correctly and that the electrical socket is working.

What to Do When Suction Performance Decreases:

- Turn off the vacuum cleaner and unplug it.
- Check the telescopic tube, flexible hose and cleaning tool for blockages or obstructions.
- Check that the dust bag is not full. Empty if necessary.
- Check that the exhaust filter is not blocked. Clean the exhaust filter, if necessary.



Note



