



VACUUM CLEANER SERVICE MANUAL

CAUTION

BEFORE SERVICING THE UNIT, READ THE "SAFETY PRECAUTIONS"
IN THIS MANUAL.

MODEL : V-C7351NT/V-C7352HE/V-C7353HTU

CONTENTS

SAFETY PRECAUTIONS	3
CAUTIONS	3
DESCRIPTION	4
SPECIFICATIONS	4
DISASSEMBLY	5~6
TROUBLE SHOOTING GUIDE	7~9
SCHEMATIC DIAGRAM	10~11
CIRCUIT DIAGRAM	10~11
EXPLODED VIEW	12~14
REPLACEMENT PARTS LIST	15~16
APPENDIX	17
1. THE TYPE OF POWER CORD & PARTS NUMBER	17
2. COLOR & PARTS NUMBER	18
3. MOTOR & PWB ASSY PARTS NUMBER.....	18

SAFETY PRECAUTIONS

BEFORE OPERATING THIS VACUUM CLEANER, READ THIS SERVICE MANUAL THOROUGHLY, AND OBSERVE EACH POINT CAREFULLY.

1. Motor filter(Air Cleaner)

- 1) This filter is reusable.
- 2) Never use the vacuum cleaner without filter. It may damage the motor.
- 3) When the light of body is on, wash the motor filter with water and brush.
- 4) Even if the light is not on, wash the motor filter at least once 6 months.

NOTE : Reusing of the motor filter.

- Never wash the filter in a washing machine or in a dishwasher.
- Never use hot water for washing the filter.
- Reuse the filter after drying it completely in the shade for a day.
- Do not dry near fire or direct sunray.

2. Exhaust filter(Washable HEPA filter)

- 1) This filter is reusable HEPA filter.
- 2) For clean air, this filter must be assembled.
- 3) Wash the exhaust filter with water once a year.
- 4) When the light of body is on, wash the exhaust filter with water.

NOTE : Reusing of the exhaust filter.

- Never wash the filter in a washing machine or in a dishwasher.
- Never use hot water for washing the filter.
- Reuse the filter after drying it completely in the shade for a half day.
- Do not dry near fire or direct sunray.
- Do not brush the filter. This will cause permanently damage allowing dust to by-pass the filter.

3. Avoid suction such materials as :

- 1) Liquid or wet dust :
Clogs the ventilation holes, reduces the suction power significantly and harms the motor.
- 2) Inflammable liquids such as benzene, alcohol or solvents.
- 3) Burning objects such as cigarette butts.
- 4) Bulky objects such as vinyl, paper etc.
- 5) Sharp objects such as needles, pins, metal, glass particles etc.

4. Attachments

- Nozzle : For cleaning wooden floor, the room floor and carpet.
- Crevice Tool : For cleaning any crevice, inside corners of window frames. (However, do not use the crevice tool more than 20 minutes.)
- Dusting Brush: For delicate vacuuming of fabrics on the furniture, curtains, etc.
- Upholstery Nozzle: For vacuuming the dust on the upholstery.

However, do not use the crevice tool more than 20 minutes because it may cause harm to the motor.

5. Close supervision is necessary when this vacuum cleaner is used by or near children. Children's carelessness may cause damage to the cleaner or injure persons.

6. Air exhausted from the vacuum cleaner is normally warm. But if extraordinarily hot air is exhausted, check if the telescopic tube, hose or clean filter is clogged or not.

7. Electric shock could occur if used outdoors or on wet surfaces.

CAUTIONS

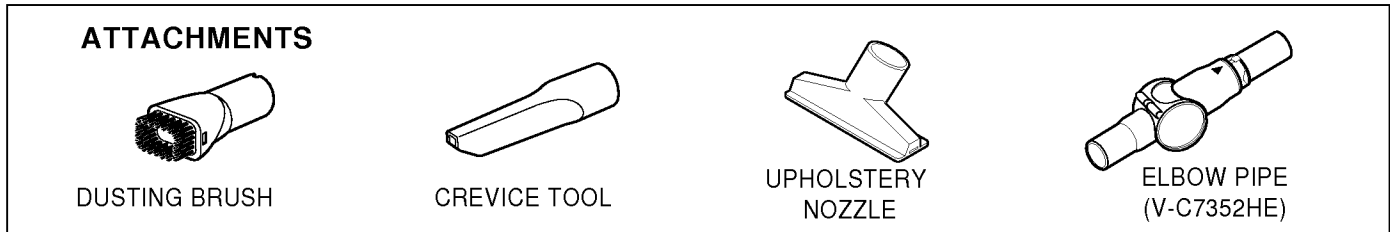
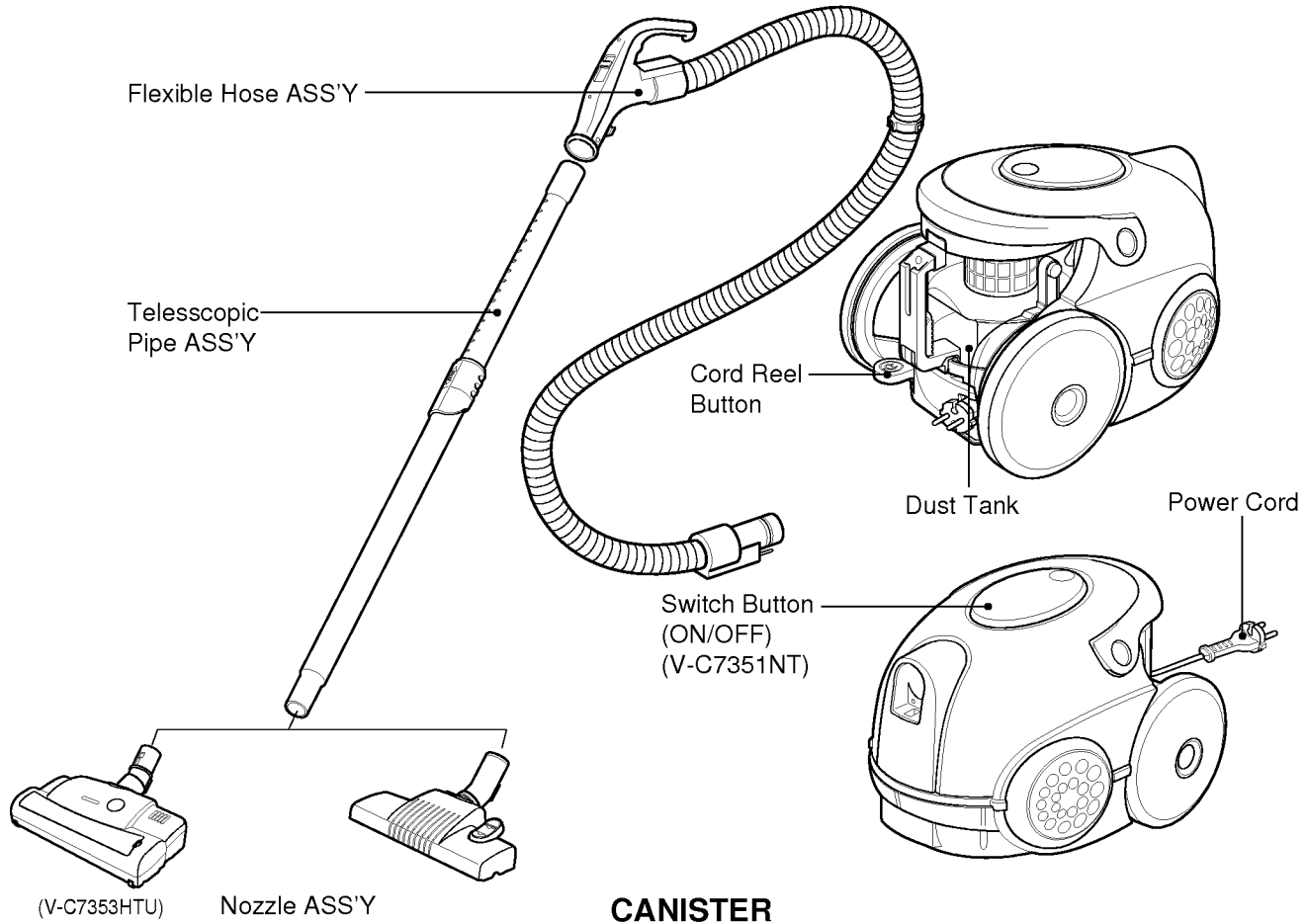
BEFORE ATTEMPTING TO SERVICE OR ADJUST ANY PART OF THE VACUUM CLEANER, DISCONNECT THE ELECTRICAL POWER SUPPLY CORD FROM THE WALL OUTLET.

1. Motor exchange

- 1) Separate the Body Cover and Body Base by unfastening the screws.
- 2) After disconnecting the lead wires, replace the old motor with a new one.

2. In case of exchanging other parts. refer to the exploded view.

DESCRIPTION



SPECIFICATIONS

- **MODEL** : REFER TO THE COVER PAGE
- **POWER SOURCE** : ON RATING PLATE
- **POWER CONSUMPTION** : ON RATING PLATE
- **POWER CONTROL** :
 - **MAIN** : SLIDE CONTROL (F/HOSE) (HE/HTU)
 - PUSH ON/OFF(BODY)
 - (NT)

- SUB** : VACUUM POWER ADJUSTMENT BY SLIDE KNOB (NT)

• This specifications are subject to change according to the buyer's request.

- **CORD LENGTH** : 6 m
- **HOSE LENGTH** : 1.6 m
- **NET WEIGHT** : 4.5 kg
- **PACKING WEIGHT** : 8.5 kg
- **NET DIMENSION** : 280 × 376 × 275 (W × D × H)mm
- **PACKING DIMENSION** : 330 × 595 × 335 (W × D × H)mm
- **ATTACHMENTS**

HOSE	1EA
TELESCOPIC PIPE ASSY	1EA
NOZZLE ASSY, FLOOR.....	1EA
NOZZLE ASSY, TURBINE(OPTIONAL).....	1EA
DUSTING BRUSH	1EA
CREVICE TOOL	1EA
UPHOLSTERY NOZZLE	1EA
ELBOW PIPE(OPTIONAL).....	1EA

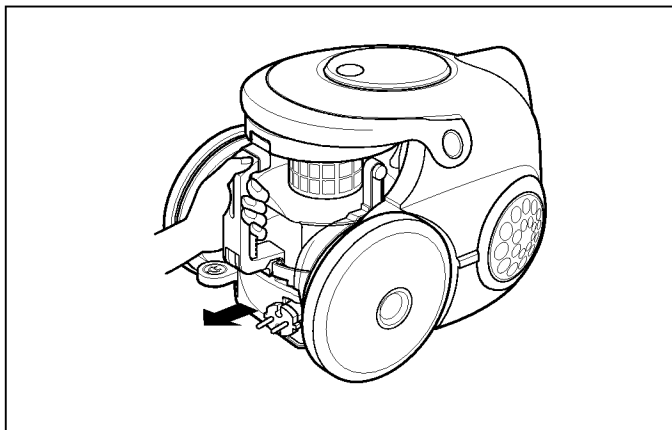
DISASSEMBLY

NOTE: Before attempting to service or adjust any part of the vacuum cleaner, disconnect the electrical power supply cord from the wall outlet.

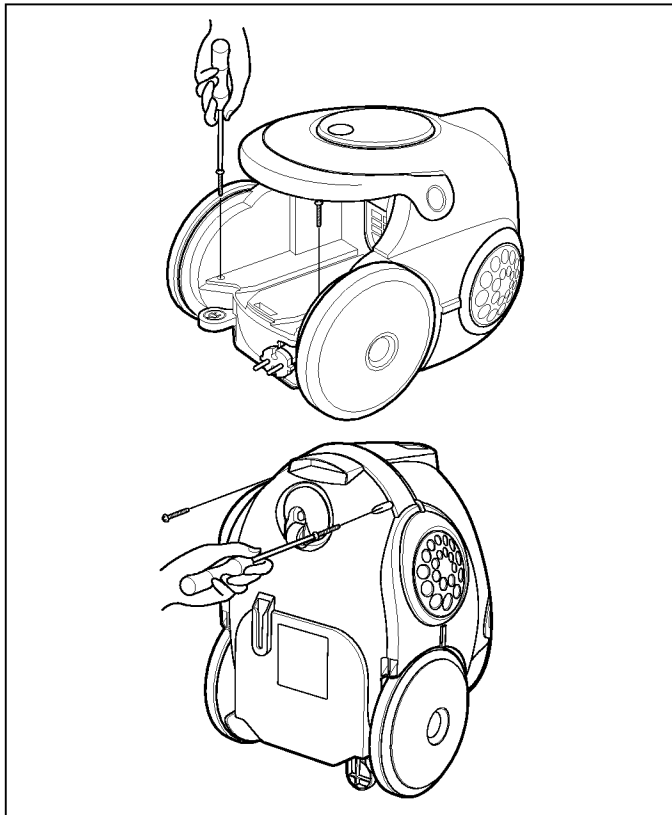
- Almost all of the parts of this vacuum cleaner can be disassembled with a screw driver and each connecting component easily fits each other. Disassemble one by one referring to the exploded view.
- If possible, don't disassemble except for the necessary parts. It is not necessary to disassemble the parts that are not detailed in the exploded view.

1. Body Cover Assembly Replacement

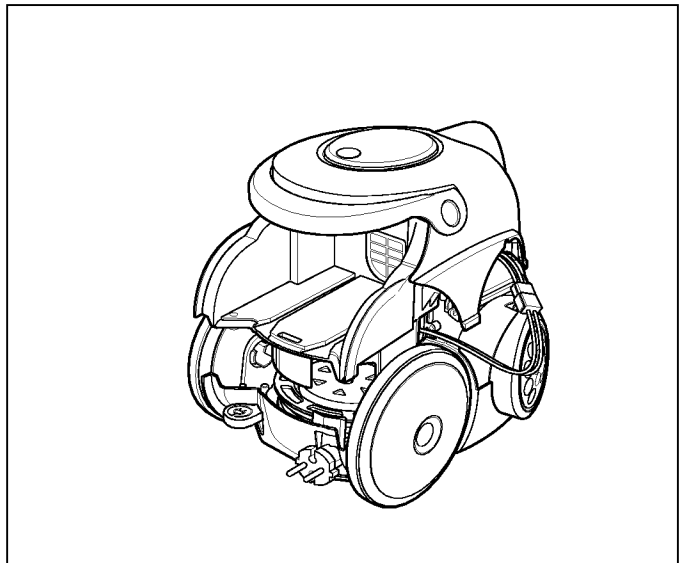
1) Remove the dust tank from the set.



2) Remove the four screws fastening the body base.

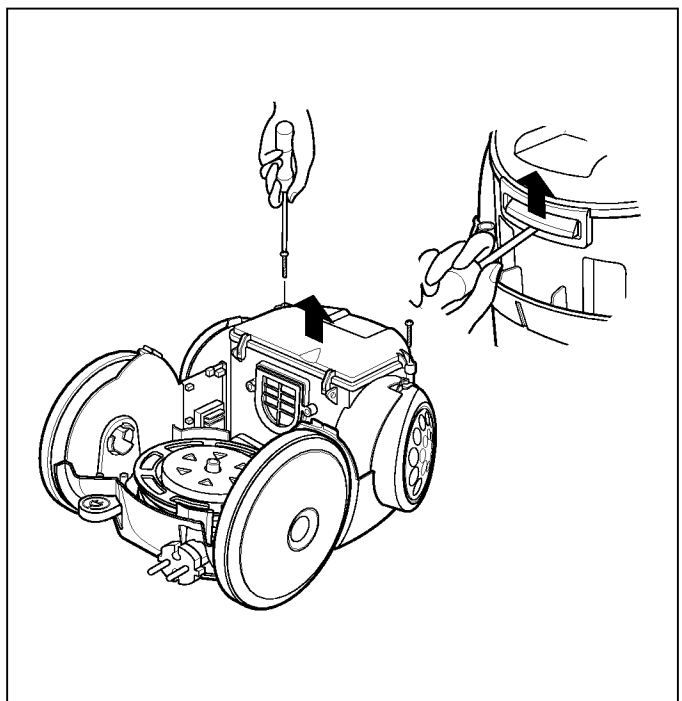


3) Disassemble the body cover, raising the body cover.

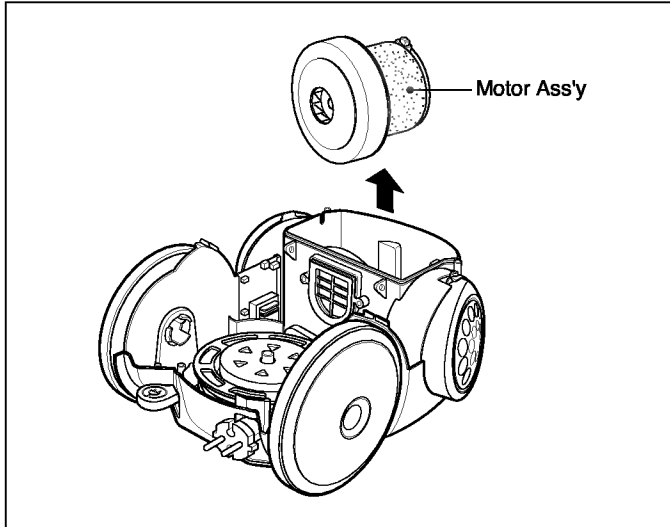


2. Motor Assembly Replacement

1) Remove the two screws fastening the motor housing cover and detach motor housing cover in the direction of the arrow and unhook the motor cover with "⊖" driver.

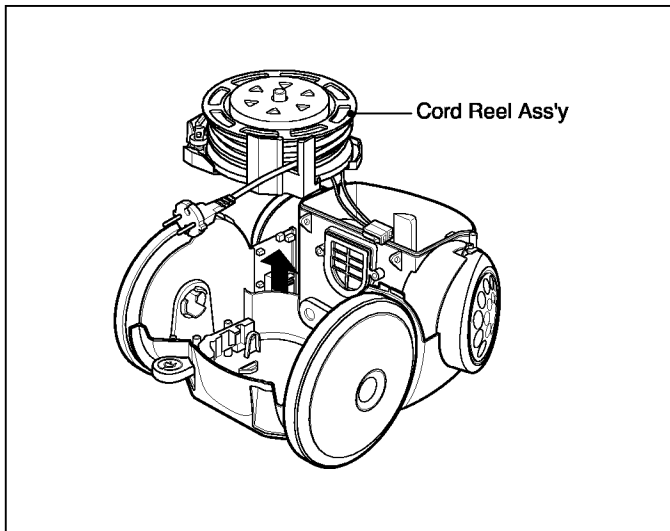


2) Pull out the motor and disconnect the lead wires from it.



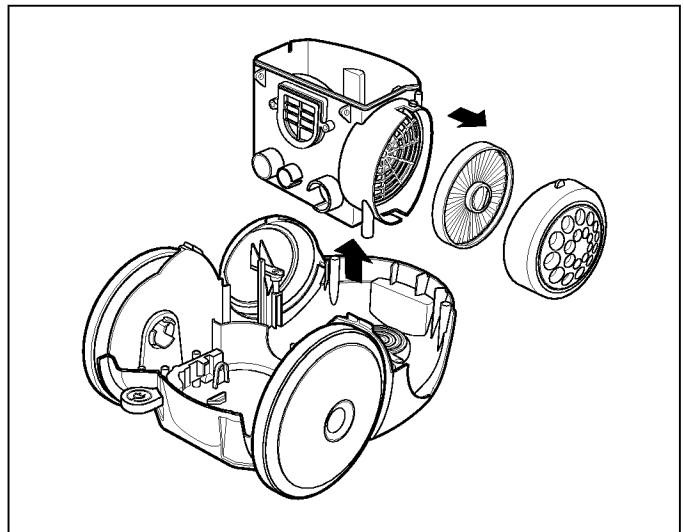
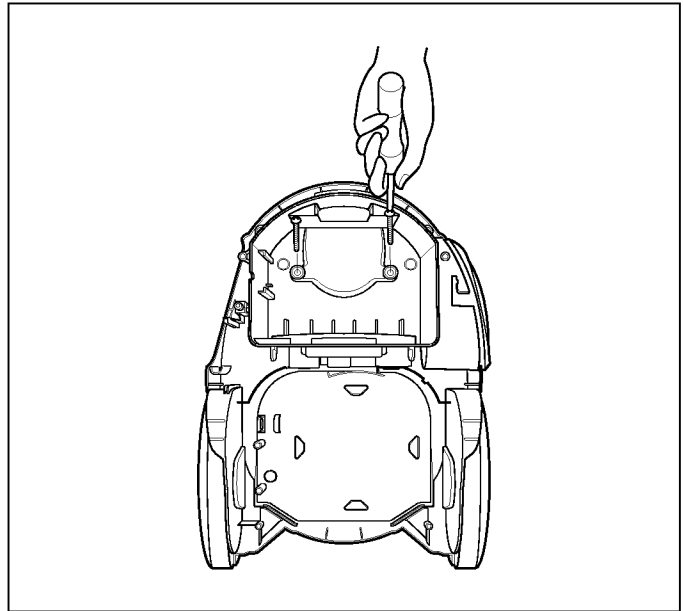
3. Cord Reel Assembly Replacement

1) Lift the cord reel assembly from the body base.



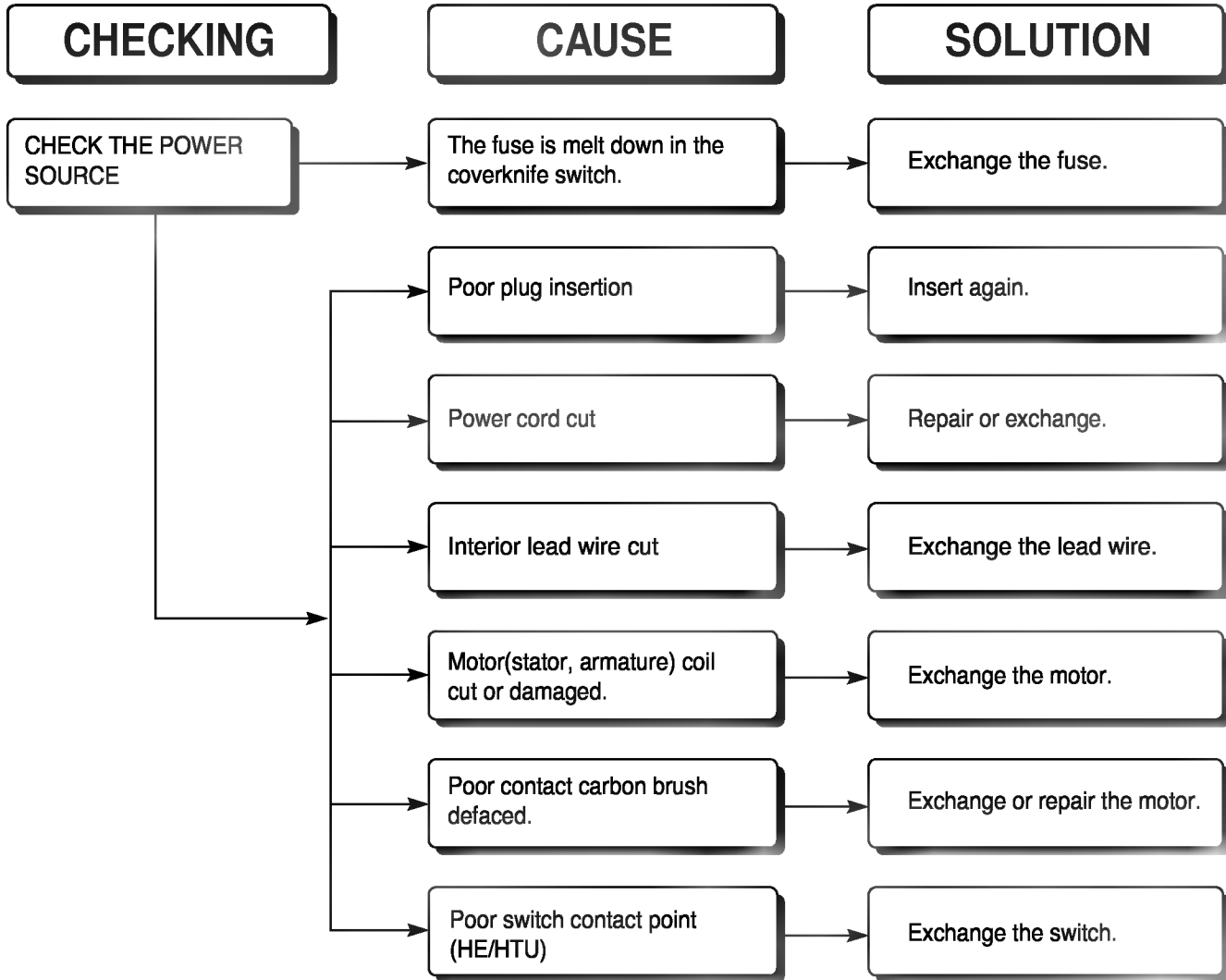
4. Disassembly of Motor Housing

1) Remove the two screws fastening the motor housing.

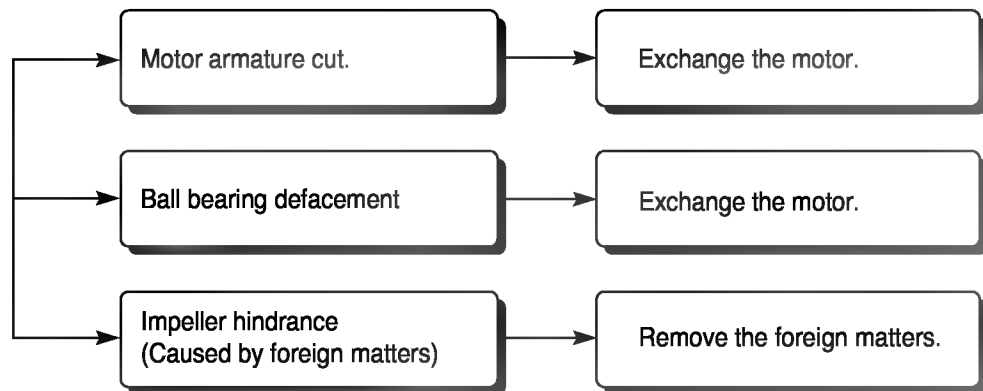


TROUBLE SHOOTING GUIDE

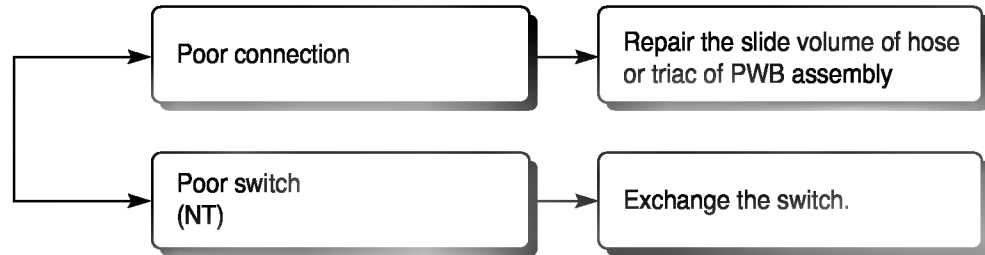
1. SWITCH ON BUT MOTOR DOES NOT TURN.



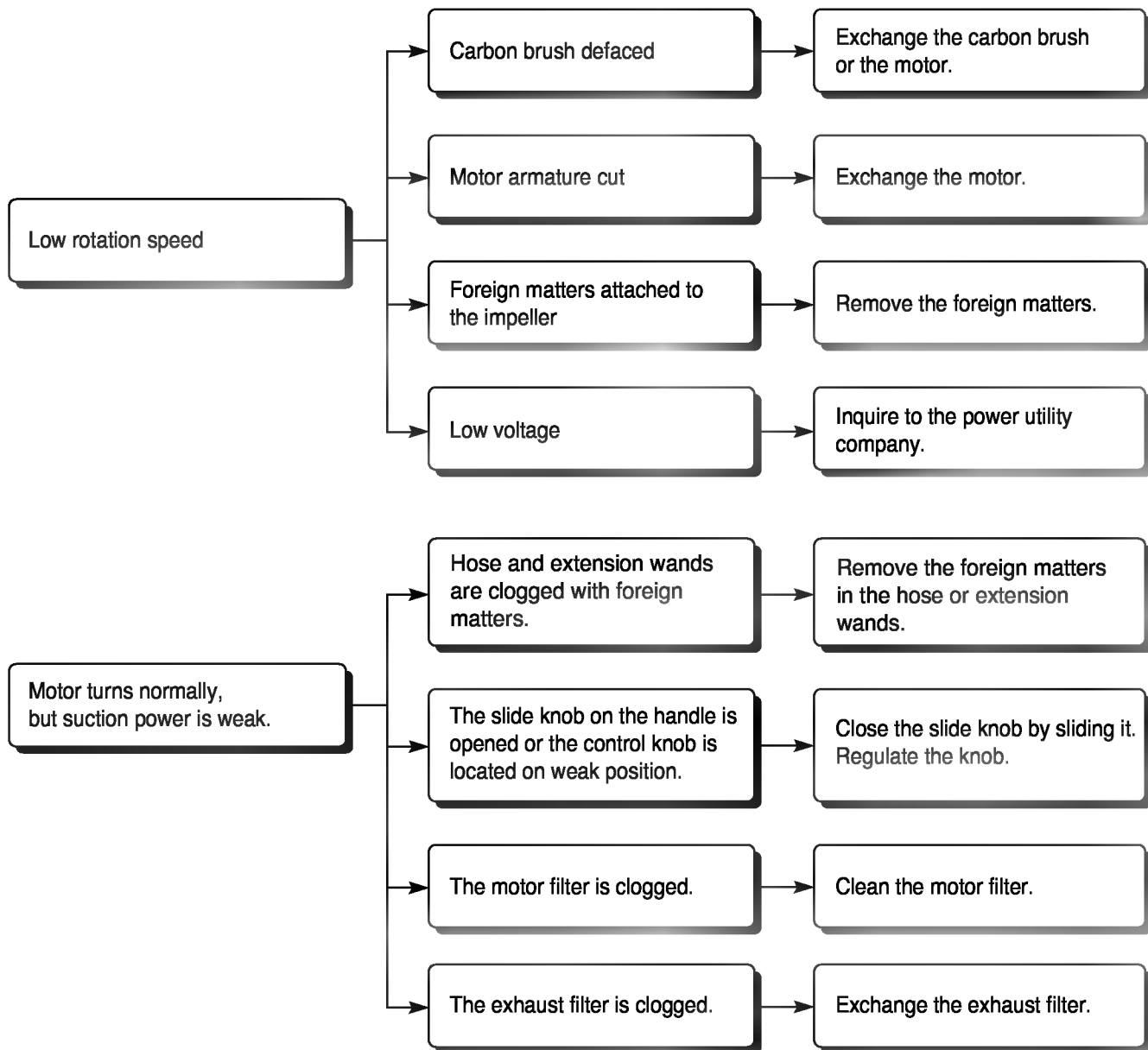
2. SWITCH ON, MOTOR DOES NOT TURN BUT BUZZES.



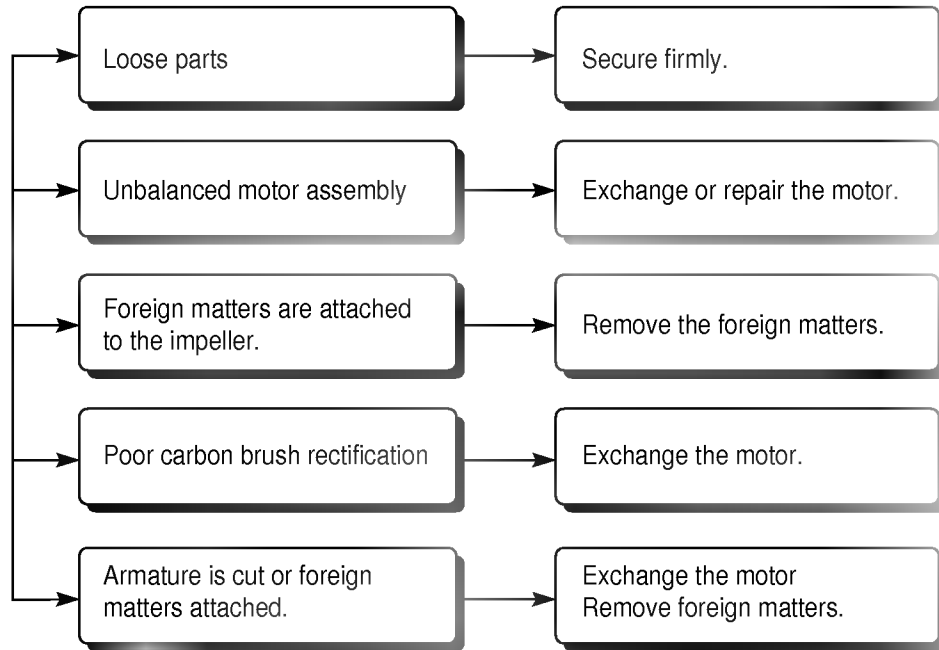
3. SWITCH OFF BUT MOTOR TURNS



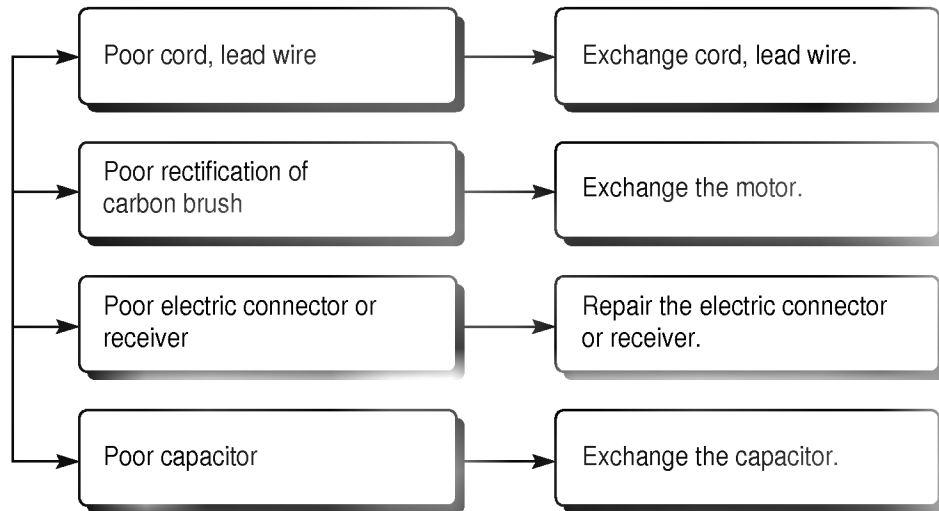
4. WEAK SUCTION POWER



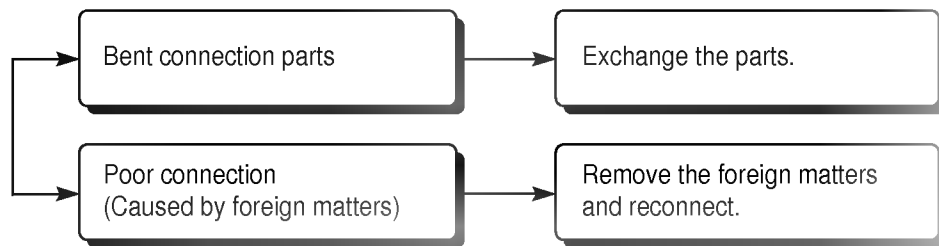
5. VIBRATION NOISES



6. RADIO, TV RECEPTION DISTURBANCE

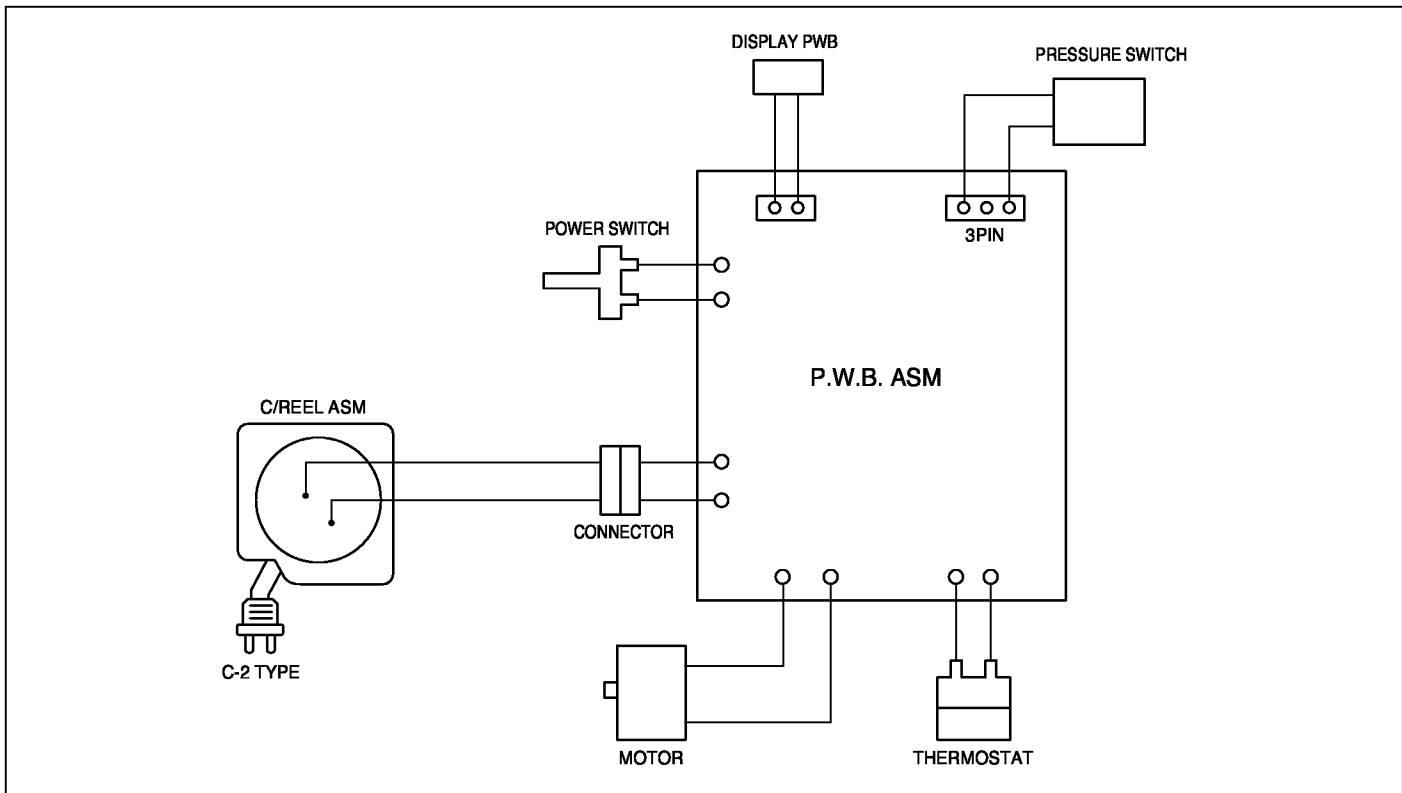


7. IMPROPER TUBE OF NOZZLE CONNECTION



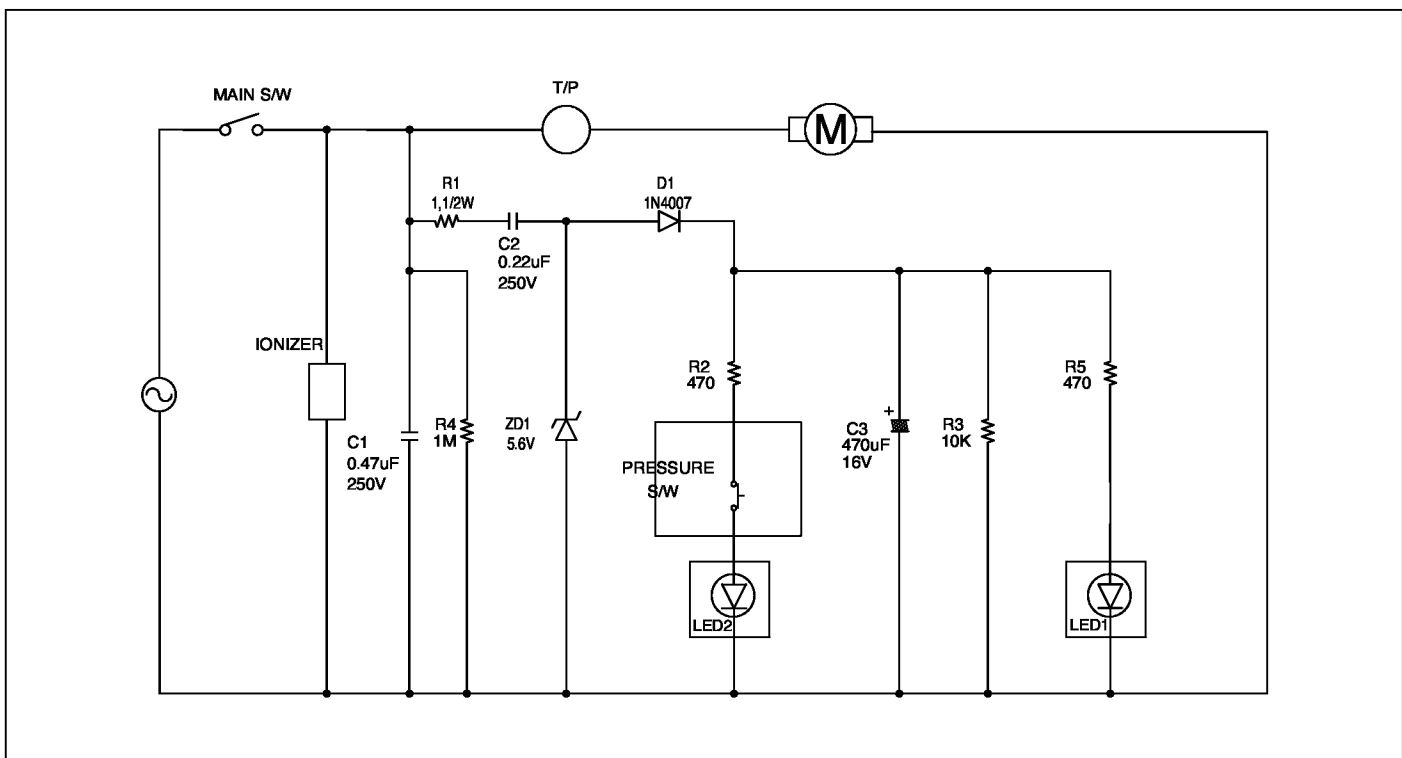
SCHEMATIC DIAGRAM

V-C7351NT



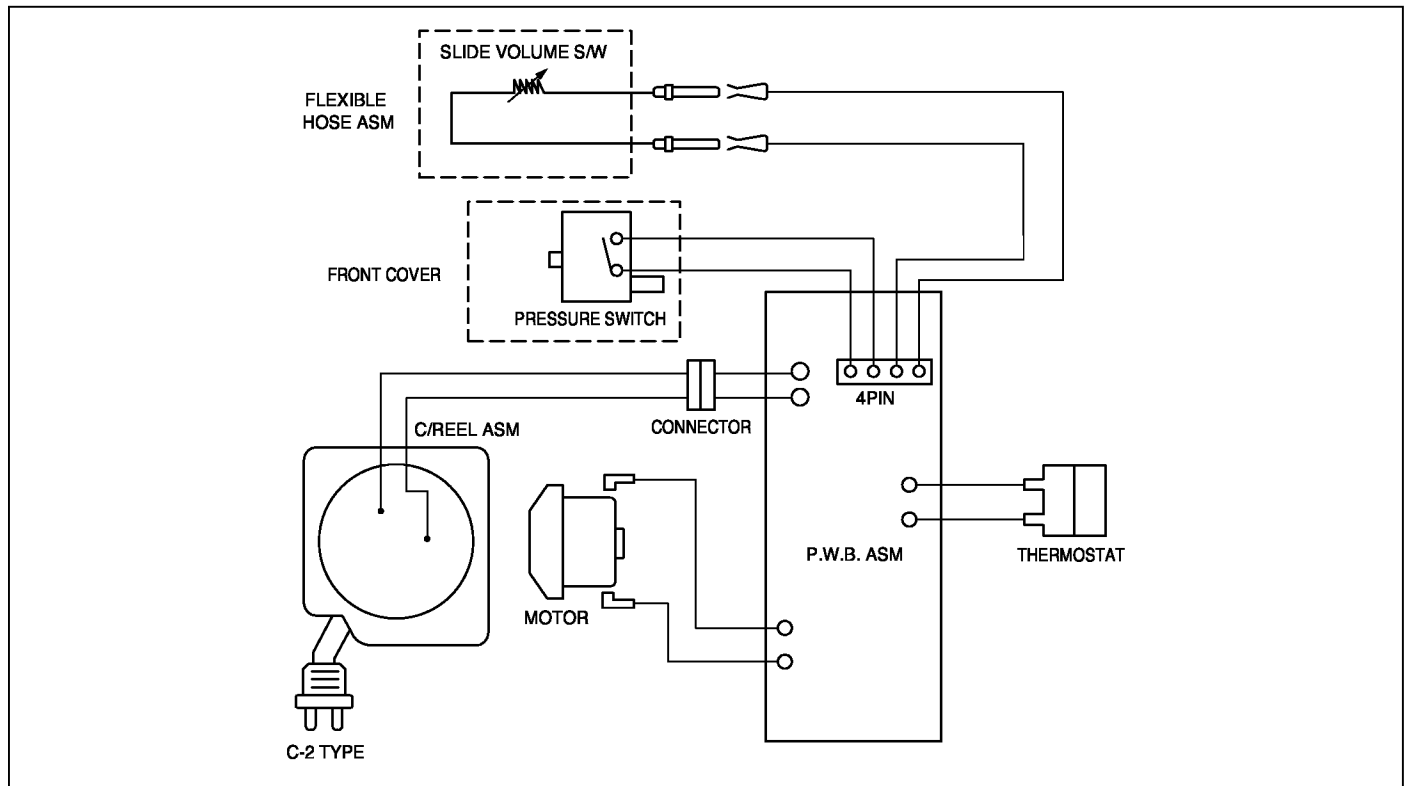
CIRCUIT DIAGRAM

V-C7351NT



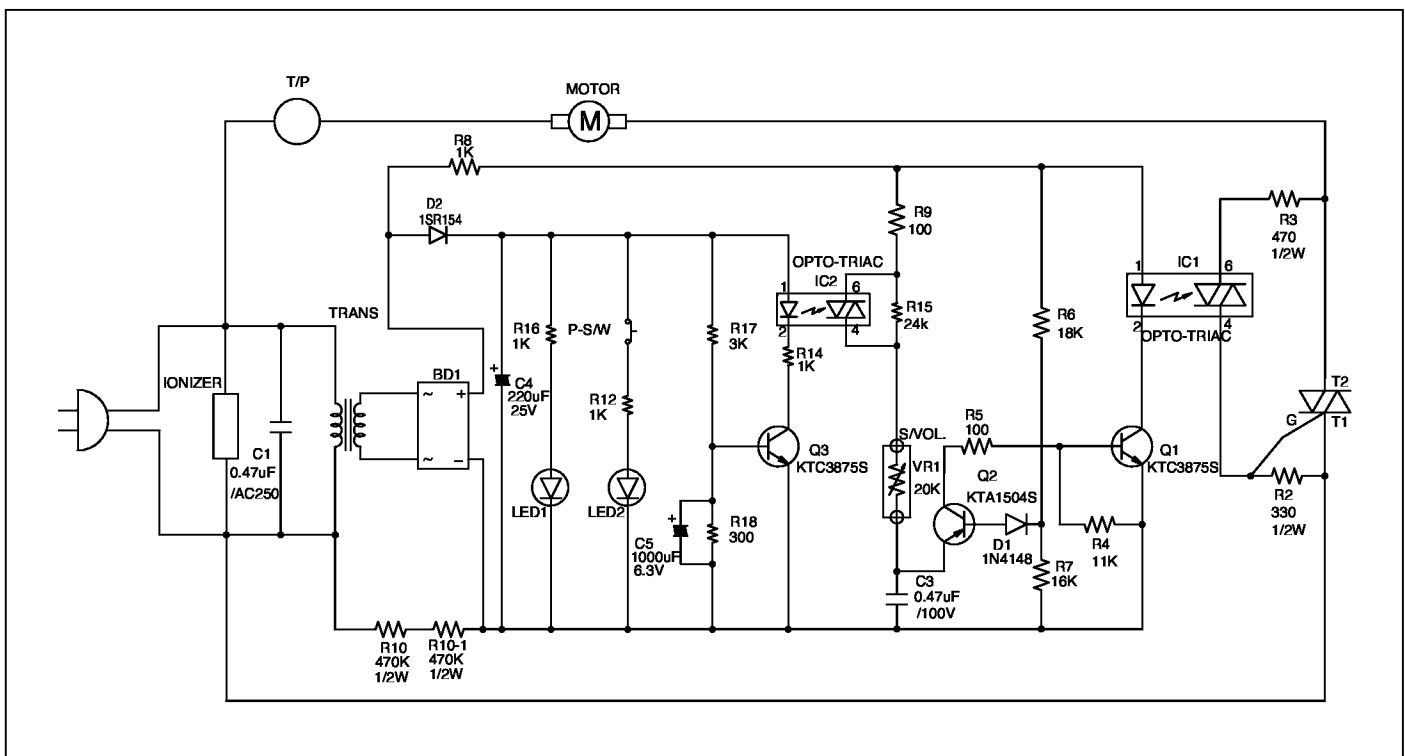
SCHEMATIC DIAGRAM

V-C7352HE/V-C7353HTU



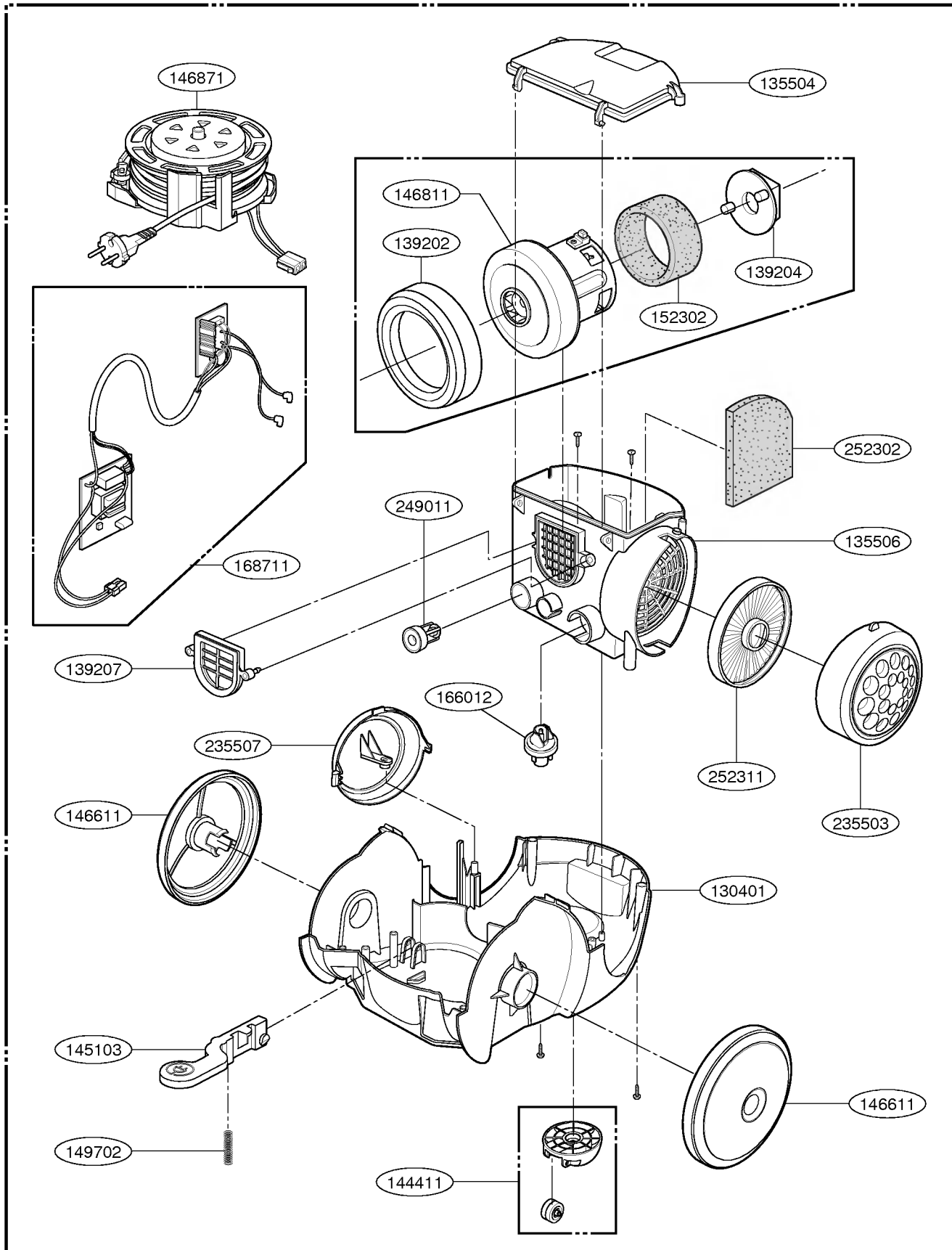
CIRCUIT DIAGRAM

V-C7352HE/V-C7353HTU

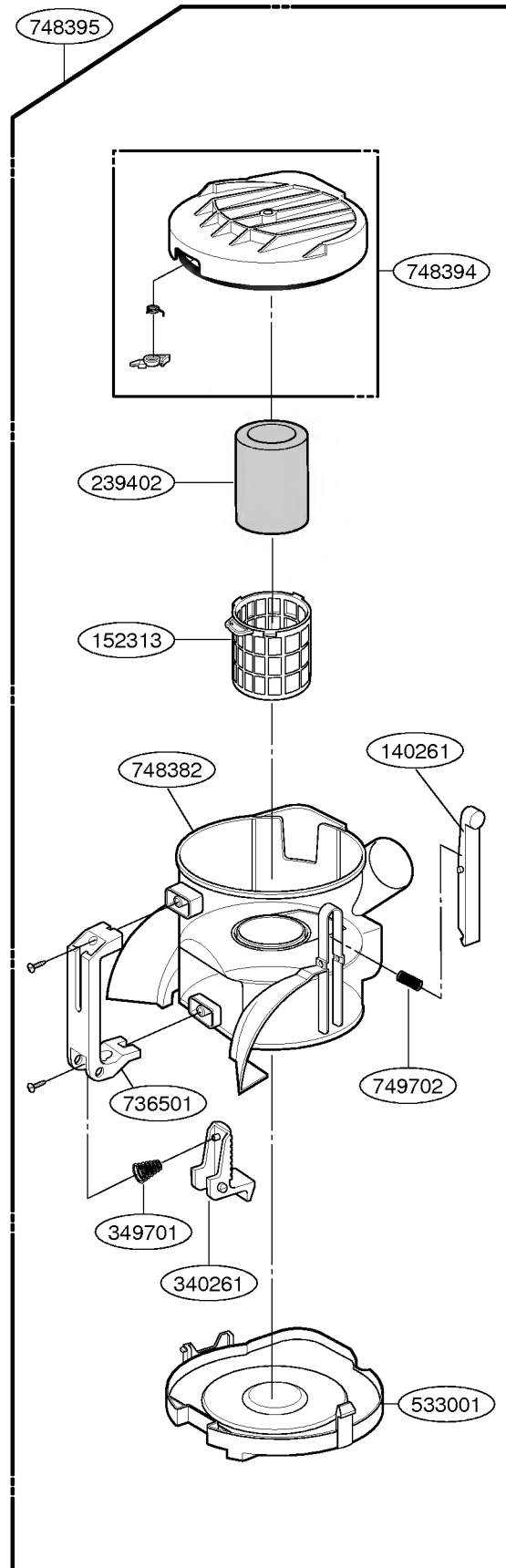
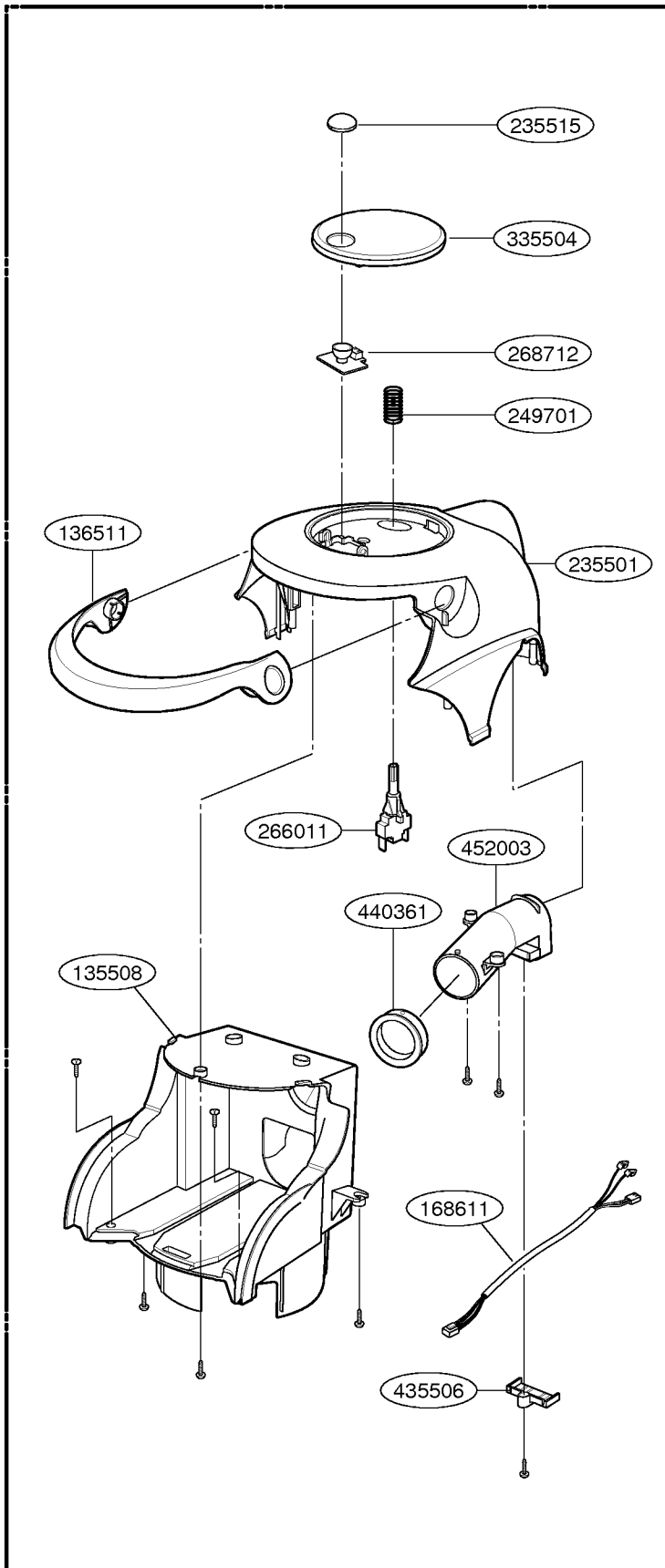


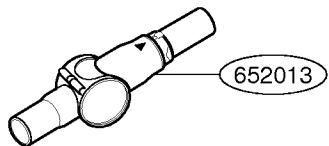
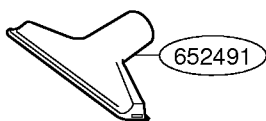
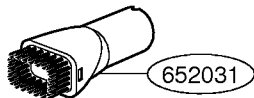
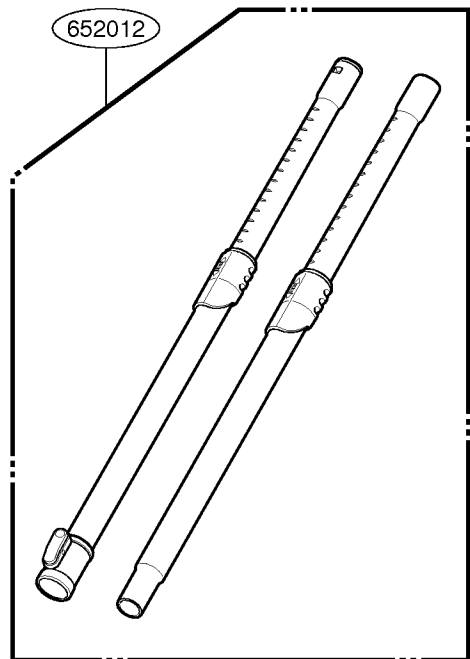
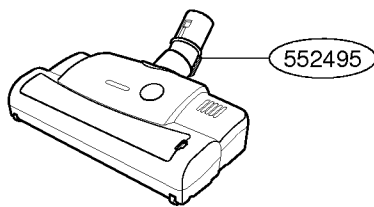
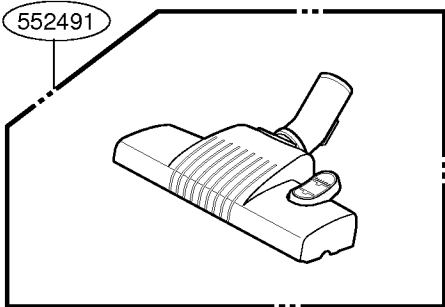
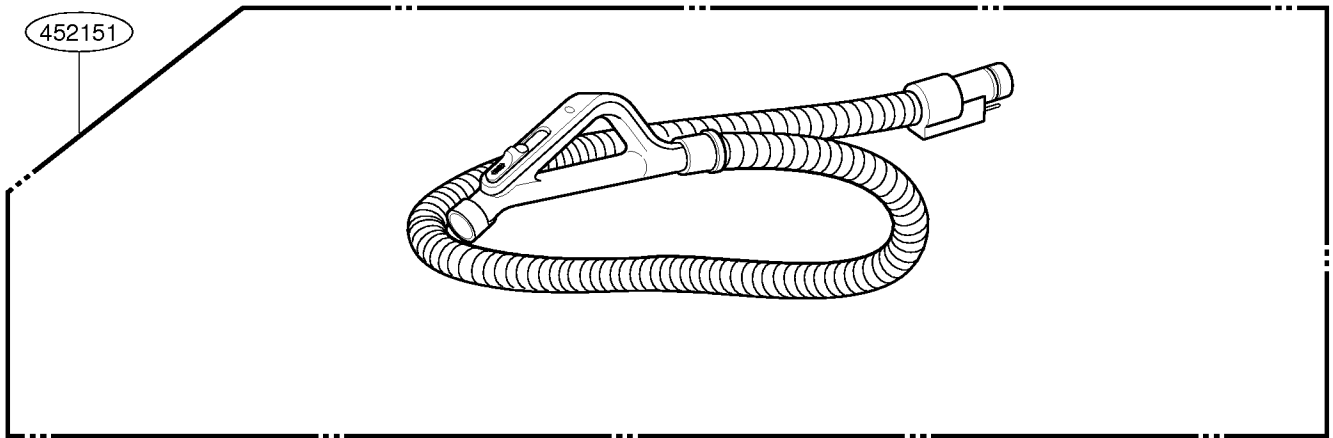
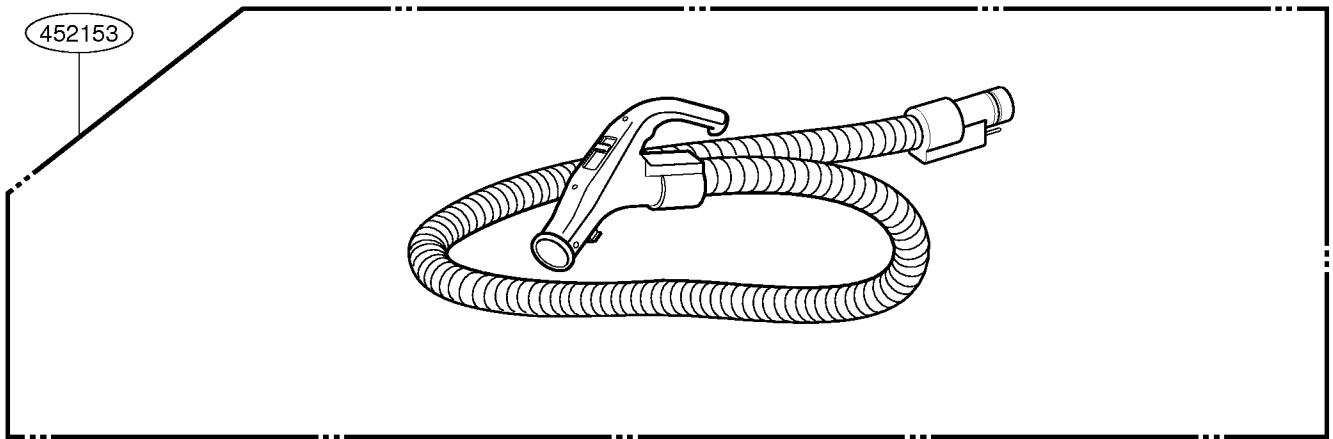
EXPLODED VIEW

BASE ASS'Y, BODY



COVER ASS'Y, BODY





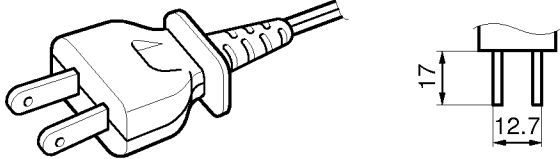
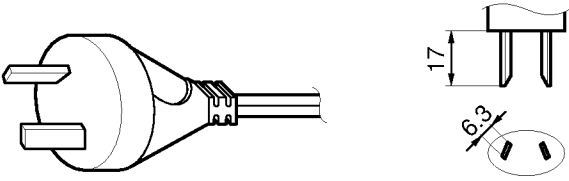
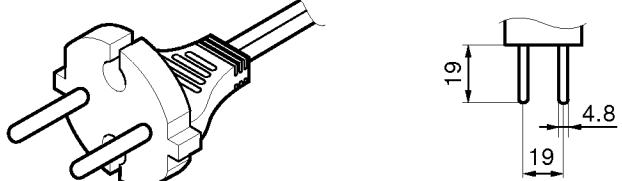
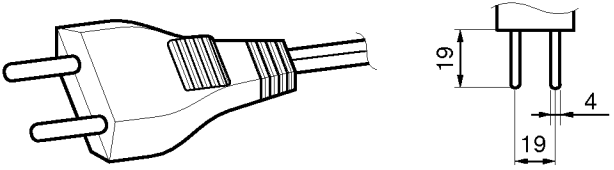
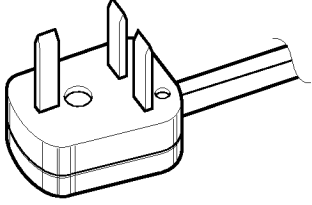
REPLACEMENT PARTS LIST

LOCATION No.	DESCRIPTION	PART No.	REMARK
130401	BASE, BODY	Refer to appendix	
135504	COVER,MOTOR	3550FI1794A	
135506	COVER,MOTOR HOUSING	3550FI1795B	
168711	PWB ASSEMBLY, MAIN	Refer to appendix	
139207	PACKING,SEAL	3920FI3875A	MOTOR HOUSING
146871	CORD REEL ASSEMBLY	4687FI1491B	
139202	PACKING, MOTOR MOUNTING	3920FI3908A	
146811	MOTOR ASSEMBLY VC	Refer to appendix	
152302	SPONGE, ABSORBING	3940FI3646A	MOTOR
139204	PACKING, SEAL	3920FI3763A	MOTOR
166012	SWITCH ASSEMBLY, PRESSURE	6601FI3488B	
235507	COVER, EXHAUST FILTER(L)	3550FI1801A	
235503	COVER, EXHAUST FILTER(R)	3550FI1800A	
249011	DAMPER ASSEMBLY	4901FI2001A	
252311	FILTER ASSEMBLY, EXHAUST	5231FI3767C	
252302	FILTER(MECH), EXHAUST	5230FI4736A	
146611	WHEEL ASSEMBLY	Refer to appendix	
145103	LEVER CORD, WINDING	4510FI2439T	
149702	SPRING, COIL	4970FI4694F	LEVER CORD
144411	CASTER ASSEMBLY	4441FI3605V	
235501	COVER, BODY	Refer to appendix	
435506	COVER, TERMINAL	3550FI3802A	HT TYPE
135508	COVER, BODY SUB	Refer to appendix	
335504	COVER, TOP	Refer to appendix	
136511	HANDLE ASSEMBLY	Refer to appendix	
452003	PIPE, CONNECTOR	5200FI2522A	
235515	COVER, DISPLAY	3550FI3890A	
168611	WIRE ASSY, CONNECTOR	6801FI3464S	HT TYPE
440361	SEAL, PIPE	3920FI3788A	PIPE, CONNECTOR
268712	PWB ASSEMBLY, DISPLAY	Refer to appendix	
266011	SWITCH ASSEMBLY, POWER	6601FI3149B	NT TYPE
249701	SPRING, BUTTON(SWITCH ON/OFF)	4170024C	NT TYPE

LOCATION No.	DESCRIPTION	PART No.	REMARK	
743895	TANK ASSEMBLY, DUST	Refer to appendix		
748382	TANK, DUST	4838FI1417A		
736501	HANDLE, CARRIER	Refer to appendix		
533001	PLATE, BOTTOM	Refer to appendix		
140261	LATCH	4026FI3687C		
749702	SPRING, COIL(TANK, DUST)	4970FI3217C		
340261	LATCH	4026FI2416B		
349701	SPRING LATCH	4970FI3217E		
748394	COVER, ASSEMBLY, DUST	Refer to appendix		
239402	SPONGE ABSORBING	3940FI3744F		
152313	FILTER ASSEMBLY, CLEAN	5231FI2497B		
452153	HOSE ASSEMBLY, FLEXIBLE	Refer to appendix		
452151	HOSE ASSEMBLY, FLEXIBLE	5215FI1351Q	NT TYPE	
652012	PIPE ASSEMBLY, TELESCOPIC	Refer to appendix		
652491	NOZZLE, UPHOLSTERY	Refer to appendix		
652031	BRUSH ASSEMBLY, DUST	Refer to appendix		
650581	TOOL, CREVICE	Refer to appendix		
552495	NOZZLE ASM, TURBINE	5249FI1431B		
652013	PIPE ASM, ELBOW	5201FI1005B		
552491	NOZZLE ASM, FLOOR	Refer to appendix		

APPENDIX

1. THE TYPE OF POWER CORD & PARTS NUMBER

TYPE	TYPE OF PLUG	CORD REEL ASS'Y P/NO (L/NO.:146871)								
A-1										
S-1										
C-2		<p>4687F11491B (V-C7351NT/V-C7352HE/V-C7353HTU)</p>								
C-1										
B-3	 <table border="1" data-bbox="705 1610 970 1791"> <thead> <tr> <th colspan="2">Color identification of fuse</th> </tr> </thead> <tbody> <tr> <td>Brown</td> <td>13A</td> </tr> <tr> <td>Yellow</td> <td>5A</td> </tr> <tr> <td>Blue</td> <td>3A</td> </tr> </tbody> </table>	Color identification of fuse		Brown	13A	Yellow	5A	Blue	3A	
Color identification of fuse										
Brown	13A									
Yellow	5A									
Blue	3A									

2. MODEL No. & PARTS NUMBER

LOCATION NO.	DESCRIPTION	V-C7353HTU (ATVQBWT)	V-C7352HE (ABTQBWT)	V-C7351NT (AGTQBWT)	REMARK
130401	BASE, BODY	3040FI1537A	3040FI1537C	3040FI1537C	
146611	WHEEL ASSEMBLY	4661FI2416Q	4661FI2416R	4661FI2416S	
235501	COVER, BODY	3550FI1796D	3550FI1796E	3550FI1796F	
135508	COVER, BODY SUB	3550FI1797D	3550FI1797E	3550FI1797F	
335504	COVER, TOP	3550FI2608D	3550FI2608E	3550FI2609A	
268712	PWB ASSEMBLY, DISPLAY	6871FX3078B	6871FX3078B	6871FX3078C	
136511	HANDLE ASSEMBLY	3651FI1318A	3651FI1318B	3651FI1318C	
748395	TANK ASSEMBLY, DUST	4839FI1024A	4839FI1024B	4839FI1024C	
736501	HANDLE, CARRIER	3650FI3342A	3650FI3342B	3650FI3342C	
533001	PLATE, BOTTOM	3300FI1467D	3300FI1467E	3300FI1467F	
748394	COVER, ASSEMBLY, DUST	3551FI1676D	3551FI1676E	3551FI1676F	
652012	PIPE ASSEMBLY, TELESCOPIC	5201FI2493F	5201FI2438N	5201FI2438D	
652491	NOZZLE, UPHOLSTERY	5249FI2456A	5248FI2259C	5248FI2259C	
652031	BRUSH ASSEMBLY, DUST	5203FI2072G	5202FI3474B	5202FI3474B	
650581	TOOL, CREVICE	5058FI3592A	5058FI3462C	5058FI3462C	
552491	NOZZLE ASM, FLOOR	5249FI1421G	5249FI1421E	5249FI1421E	
452153	HOSE ASSEMBLY, FLEXIBLE	5215FI1353F	5215FI1330T		

3. MOTOR & P.C.B ASSY PARTS NUMBER

LOCATION NO.	DESCRIPTION	PART NO.	REMARK
146811	MOTOR ASSY, VC	4681FI2457A	VMC420E5 230V 50Hz (V-C7351NT/V-C7352HE/V-C7353HTU)

LOCATION NO.	DESCRIPTION	PART NO.	REMARK
168711	PWB(PCB) ASSEMBLY, MAIN	6871FX2208D	230V / 50Hz (H**)
		6871FX2195C	230V / 50Hz (NT)



P/No. : 3828Fi5900A

August. 2004
Printed in Korea