

DIGITAL MULTIMEDIA PLAYER

OWNER'S MANUAL

MODEL: JM52

MF-JM52S4K / MF-JM52S4W

MF-JM52S6K / MF-JM52S6W

Please read this manual carefully before
operating your MP3 player.
Retain it for future reference.

Designs and specifications are subject to
change without notice for improvement.





Table of Contents

Contents	4
Precaution	5-6
Accessories	7
Name of Each Part	8-9
<input type="checkbox"/> Up / Front Panel	8
<input type="checkbox"/> Rear / Down Panel	9
Display Window	10-12
<input type="checkbox"/> Music Screen	10
<input type="checkbox"/> FM Radio Screen	11
<input type="checkbox"/> Record Screen	12
Installing Software	13-21
<input type="checkbox"/> Installing Explorer	13-14
<input type="checkbox"/> Installing Lyrics Palette	15-16
<input type="checkbox"/> Installing Transcoder	17
<input type="checkbox"/> Installing Brain Shower Recovery	18
<input type="checkbox"/> Installing the device driver	19-21
Using the Removable Storage	22
<input type="checkbox"/> Downloading Files	22
<input type="checkbox"/> Delete Files	22
Connecting Devices	23-25
<input type="checkbox"/> Using AC Power Adapter	23
<input type="checkbox"/> Charging	23
<input type="checkbox"/> Connecting USB Cable	24
<input type="checkbox"/> Disconnecting USB Cable	25
<input type="checkbox"/> About the Rechargeable Battery	25
Before Operation	26-27
<input type="checkbox"/> Connecting Earphone	26
<input type="checkbox"/> Connecting External Device : Line-In	26
<input type="checkbox"/> Power On	27
<input type="checkbox"/> Power Off	27
<input type="checkbox"/> Hold Function	27
<input type="checkbox"/> Adjust Volume	27
Menu Mode	28-29
<input type="checkbox"/> The Menu Screen	28
<input type="checkbox"/> Using Navigation	29
Music Operation	30-39
<input type="checkbox"/> Playing Music files	30
<input type="checkbox"/> Using Title information(ID3 Tag)	30
<input type="checkbox"/> Updating music information files	31
<input type="checkbox"/> Setting Playlist	32
<input type="checkbox"/> Playing Playlist	32
<input type="checkbox"/> Delete One Playlist	33
<input type="checkbox"/> Delete All Playlist	33
<input type="checkbox"/> Setting playlist : M3U	34-35
<input type="checkbox"/> Playing M3U Playlist	35
<input type="checkbox"/> To Pause Files	36
<input type="checkbox"/> Playing next/previous file	36
<input type="checkbox"/> Fast-forward/Fast-reverse	36
<input type="checkbox"/> Local Repeat A-B	37
<input type="checkbox"/> Changing the EQ	37
<input type="checkbox"/> Changing the Play mode	37
<input type="checkbox"/> Book Mark Function	38-39



Table of Contents (Continued)

Video Operation40	Setting Operation50-60
<input type="checkbox"/> Playing Video Files40	<input type="checkbox"/> Setting Mode50
<input type="checkbox"/> To Pause Files40	<input type="checkbox"/> Sound51-52
<input type="checkbox"/> Playing next/previous file40	<input type="checkbox"/> Display53-54
<input type="checkbox"/> Fast-forward/Fast-reverse40	<input type="checkbox"/> Play Mode55
Photo Operation41-42	<input type="checkbox"/> Rec Setup56
<input type="checkbox"/> Playing Photo Files41	<input type="checkbox"/> Timer57
<input type="checkbox"/> Playing next/previous file41	<input type="checkbox"/> Alarm58
<input type="checkbox"/> Zoom42	<input type="checkbox"/> Etc.59-60
<input type="checkbox"/> Viewing Slide Show42	Firmware Operation61
E-book Operation43	<input type="checkbox"/> Upgrading Firmware61
<input type="checkbox"/> Playing Text Files43	Using PC Program62-73
FM Radio Operation44-46	<input type="checkbox"/> Using Explorer62
<input type="checkbox"/> Listening to the FM Radio44	<input type="checkbox"/> To download files63-64
<input type="checkbox"/> Changing Frequency Mode44	<input type="checkbox"/> To upload files65
<input type="checkbox"/> Searching Frequency44	<input type="checkbox"/> To delete the files66
<input type="checkbox"/> Saving Frequency45	<input type="checkbox"/> To check version information67
<input type="checkbox"/> Auto Scan45	<input type="checkbox"/> MP3 Explorer update67-68
<input type="checkbox"/> Deleting Stored Frequencies46	<input type="checkbox"/> To select menu language68
<input type="checkbox"/> Recording FM Radio46	<input type="checkbox"/> Transcoder69-71
Recording Operation47-49	<input type="checkbox"/> JMS2 Player72
<input type="checkbox"/> Recording Voice47	<input type="checkbox"/> Recovery Brain Shower73
<input type="checkbox"/> Recording Line-in48	<input type="checkbox"/> Lyrics Palette73
<input type="checkbox"/> Playing the Recorded file49	Troubleshooting74
		Specifications75



Contents

Removable Storage Device

You can easily copy and paste files to the player using Windows Explorer.

USB 2.0 Support

USB 2.0 transmits data with a speed of 480Mbps that is 40 times faster than USB1.1.

Direct MP3 Recording

You can convert music from CDs, cassettes and radio into MP3 files without a PC.

FM Reception

Listening to an FM program is made easy with Auto Search and Frequency.

Magnificent 3D sound-SRS, WOW

Experience the magnificent 3D and rich base sounds with the industry-recognized SRS WOW technology.

Upgrading Firmwares

It can become the continuous improvement of the function and the various setting up this product.

Mass Storage

This product uses mass storage that exceeds the capacity of most existing MP3 players and allows you to use it as a removable drive.

Color 1.8" TFT-LCD

TFT-LCD screen can display the optimum image quality, so can realize vivid, natural colors.

Muti-Codec Player

This product will play movie files (MPEG, WMV, AVI), music files (MP3, OGG, WMA) and photo files (JPEG) on the built LCD screen.

Text and Image Viewer

View ebook, Lyrics, and stored images with the Text viewer and Image viewer features.

Brain Shower?

Brain Shower files are the music files to clear your head.
Brain Shower folder →
concentration, refresh, power up, deep sleep



Precaution



Never attempt to disjoin or repair the product yourself.



Never use the product for other purposes than those described in this guide.



Note that malfunctions may occur if you use the product in places where static electricity occurs frequently.



Avoid to leave the product in hot or humid place.



Take special attention when touching the product box, owners manual and accessories to avoid cuts.



If the product emits an unusual odor or excessive heat, or you notice anything else that seems unusual, do not use the product and contact our Customer Service Center.



Pay attention to the USB cable direction when connecting the product to PC. The PC or the product may be damaged if you connect the USB cable in the wrong direction.
Never use damaged or worn USB cable.



Do not use the product near water. Do not touch this product with wet hands.



Be sure to back up your data files. The files on the player may be deleted while using the product.
We are not responsible for any damaged or lost files that are not saved on your PC. Customer Service Center does not back up your data while servicing.



Avoid to use headphone or earphone while driving a vehicle, motorcycle, riding a bicycle, getting exercise or working in dangerous areas.
Not only is it dangerous, but also illegal in some areas.



Precaution

On handling the LCD screen

- Do not scratch the LCD or exert pressure on it. This could cause a malfunction.
- Using the player in low temperature conditions may produce a residual image on the screen. This is not a malfunction. When the player returns to normal temperature, the screen returns to normal.
- A residual image may appear on the screen if the same image is displayed for a lengthy period of time. The residual image disappears in a while. If you are going to leave the player for a long time, turn off the power.
- The screen becomes warm during operation. This is normal and does not indicate a malfunction.

On headphones

Preventing hearing damage

Avoid using headphones at high volume. Hearing experts advise against continuous, loud, and extended play. If you experience a ringing in your ears, reduce the volume or discontinue use.

Showing consideration for others

Keep the volume at a moderate level. This will allow you to hear outside sounds and still be considerate to the people around you.

On adjusting the volume

Do not turn up the volume while listening to a section with very low level inputs or no audio signal. If you do, the speakers may be damaged when a peak-level section is played.

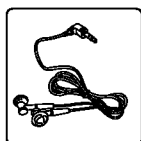
Road safety

Do not use the monitor unit and headphones while driving, cycling, or operating any motorized vehicle. It may create a traffic hazard and is illegal in some areas. It can also be potentially dangerous to play your headset at high volume while walking, especially at pedestrian crossings. You should exercise extreme caution or discontinue use in potentially hazardous situations.

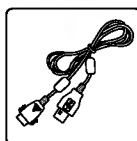
- Do not install the monitor display where viewable by the driver.
- Some states restrict the use of monitors and televisions in vehicles. Where use is permitted, the units should not be installed or operated so as to be viewable by the driver.



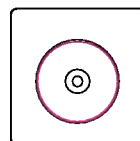
Accessories



Earphone



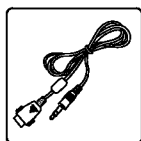
USB cable



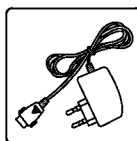
Installation CD



Owner's Manual



Line In/Out
Cable



AC Adapter



- Because this product operates in touch control, the product can unintentionally operated when carrying around if not locked.
- Contents may be changed without notices.



Disposal of your old appliance

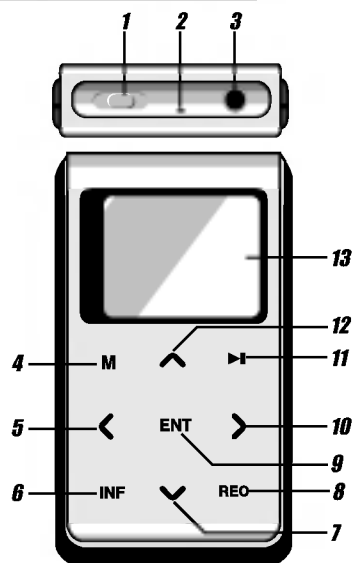
1. When this crossed-out wheeled bin symbol is attached to a product it means the product is covered by the European Directive 2002/96/EC.
2. All electrical and electronic products should be disposed of separately from the municipal waste stream via designated collection facilities appointed by the government or the local authorities.
3. The correct disposal of your old appliance will help prevent potential negative consequences for the environment and human health.
4. For more detailed information about disposal of your old appliance, please contact your city office, waste disposal service or the shop where you purchased the product.



Name of Each part

Up / Front Panel

Actual player may vary slightly from images shown.



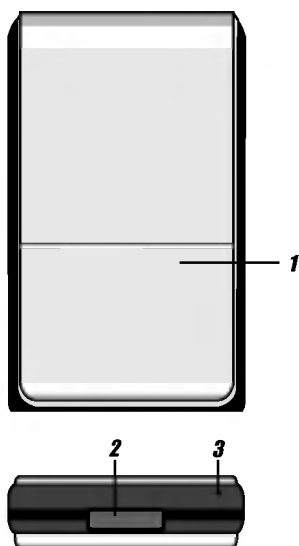
- 1** Power **ON** / **OFF** / **HOLD** Switch
- 2** Microphone (**MIC**)
- 3** Earphone socket
- 4** Menu (**M**) / Return button
 - MEMORY/ PRESET : Radio mode
- 5** **REW** < / Left arrow button
 - Decrease frequency : Radio mode
- 6** Information (**INF**) button
 - EQ / Book-Mark / Playlist button
- 7** **VOLUME** ∇ / Down arrow button
- 8** Record (**REC**) button
 - REPEAT **A-B** / Play mode
- 9** ENTER (**ENT**) / Navigation button
- 10** **FF** > / Right arrow button
 - Increase frequency : Radio mode
- 11** **PLAY / PAUSE** ►|| / Power **OFF**
- 12** **VOLUME** ▲ / Up arrow button
- 13** LCD



Name of Each part (Continued)

Rear / Down Panel

Actual player may vary slightly from images shown.



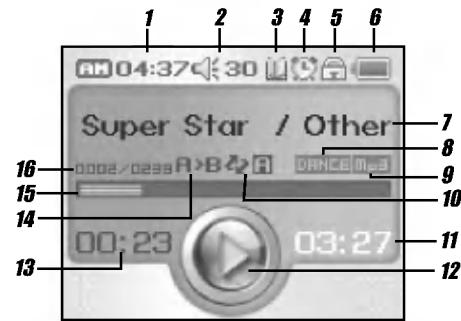
- 1** Battery Cover
- 2** **USB** Connector
- LINE-IN** Connector
- DC-IN** Connector
- 3** Recovery button



Display Window

Music Screen

Actual player may vary slightly from images shown.



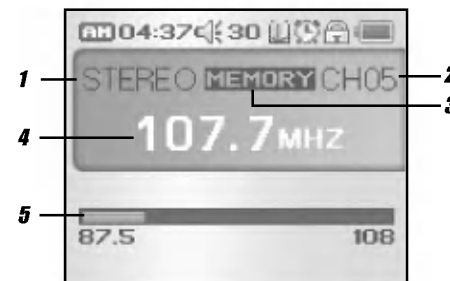
- 1** Current Time
- 2** Volume indicator
- 3** Book Mark indicator
- 4** Alarm indicator
- 5** Hold indicator
- 6** Battery indicator
- 7** Music Title / ID3 Tag
- 8** Equalizer indicator
- 9** File Type indicator
- 10** Play Mode indicator
- 11** Total Time
- 12** PLAY ► / PAUSE || indicator
- 13** Play Time
- 14** Repeat A-B indicator
- 15** Progress Bar
- 16** File Number / Total File Number



Display Window (Continued)

FM Radio Screen

Actual player may vary slightly from images shown.



- 1** Stereo / Mono indicator
- 2** Current Channel indicator
- 3** Radio Mode (MEMORY / PRESET)
- 4** Frequency Number
- 5** Frequency Bar



Display Window (Continued)

Record Screen

Actual player may vary slightly from images shown.



- 1** Recording Status
- 2** Recording Time
- 3** Bit Rate indicator
- 4** File Name
- 5** Free Space Bar
- 6** Remaining Recording Time
- 7** ADT(Auto Detect) indicator



Installing Software

Installing Explorer

Your MP3 Player needs the minimal system requirements for your computer.

- OS : Windows 98SE / ME / 2000 / XP
NT is not supported
- CPU : At least Pentium - 133MHz
- Memory : At least 32MB
- HDD Space : At least 100MB
- Video Card : 640 x 480 Mode, At least High Color(16bit)
- USB Port
- CD-ROM

You can update the Software for Windows 98SE/ME/2000/XP available etc. from an internet website by LG Electronics Inc.

Refer to the following sample contact procedure;
<http://www.lge.com> → Service Site → Select Your COUNTRY → Product Support → Device Driver

Note

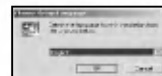
- Windows ME, Windows 2000, and Windows XP operating systems support USB 2.0 storage without additional setup. Windows Explorer may be employed to use the product as a portable storage device without installing any other information.
- In the Windows 98SE operating system however, the managing software is required to use the product as a portable storage device.

1 Insert the software CD into drive D:\ (CD ROM drive).
The install will be runned automatically

2 Select "Explorer".



3 Select the language you want and Click "OK"



4 Click the "Next" button in the installation window.





Installing Software (Continued)

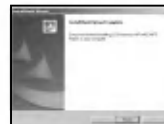
- 5** Select the installation folder and click the "Next" button.



- 6** Installation is progressing.



- 7** Click the "Finish" button when the installation complete screen is displayed.



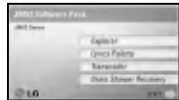
- 8** "MP3 Explorer" icon is created on the Windows desktop.



Installing Software (Continued)

Installing Lyrics Palette

1 Select "Lyrics Palette".



2 Select the language you want and Click "OK"



3 Click the "Next" button in the installation window.



4 Read about the license agreement and select "Yes"



5 Select the installation folder and click the "Next" button.



6 Installation is progressing.





Installing Software (Continued)

7 Click the "Finish" button when the installation complete screen is displayed.



8 Lyrics Palette icon is created on the Windows desktop.



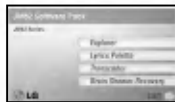
• It should be installed the Window Media Format 9 or a more updated version.



Installing Software (Continued)

Installing Transcoder

1 Select "Transcoder".



2 Click the "Next" button in the installation window.



3 Select the installation folder and click the "Next" button.



4 Select the path of program folder and then click the "Next" button.



5 Installation is progressing.



6 Click the "Finish" button when the installation complete screen is displayed.





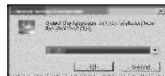
Installing Software (Continued)

Installing Brain Shower Recovery

1 Select "Brain Shower Recovery".



2 Select the language you want and Click "OK"



3 Click the "Next" button in the installation window.



4 Read about the license agreement and select "Yes".



5 Select the installation folder and click the "Next" button.



6 Installation is progressing.





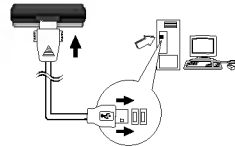
Installing Software (Continued)

Installing the device driver

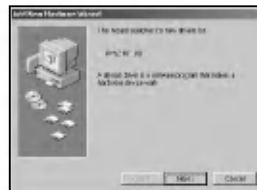
Device driver installation is required for the Windows 98SE operating system.

Please disregard this section for Windows Me, Windows 2000, Windows XP.

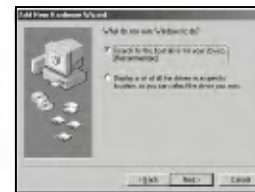
- 1 Connect the product to a PC with the USB cable included.



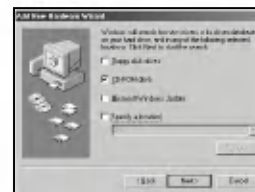
- 2 If the product is not recognized by the PC, an "Add new hardware wizard" window is opened. Click the "Next" button.



- 3 Check "Search the best driver for your device" and Click the "Next" button.



- 4 Click the "Specify a location" option and click the "Browse" button.





Installing Software (Continued)

- 5 Select the driver98 folder on the installation CD that includes the .inf file and click the “OK” button.
(CD: JM52 Windows98SE USB Drivers)

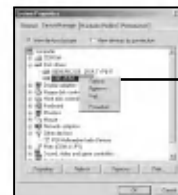
- 6 When the folder is located, click the “Next” button.



- 7 Click the “Finish” button to finish the installation.



- 8 The following is displayed if you choose “Control panel > System” on the windows background window and select the Deice Manager.

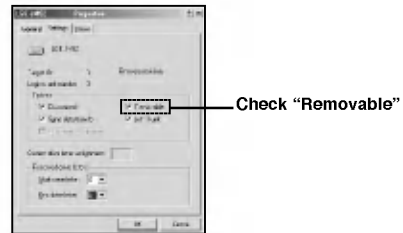


Click the LGE JM52 using the right mouse button.

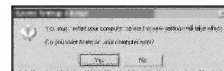


Installing Software (Continued)

9 You choose “Settings” on the windows background window.



10 Click the “Yes” to restart your computer.

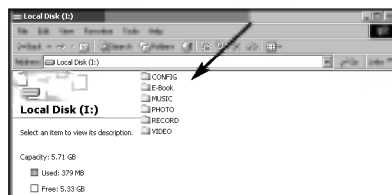




Using the Removable Storage

Downloading Files

- 1** Connect one end with the USB port on the back of your PC and then plug the other end into the USB connector of your Player.
- 2** Open Windows Explorer on PC.
Local Disk is displayed in Window Explorer.
- 3** Select the file you want to save, then drag and drop it to the removable disk.



- Don't remove the USB cable while uploading or downloading a files.
- Copy files (Video, Music, Photo, Text file) from the PC to the removable disk.
 - Movie file → VIDEO Folder
 - Music file → MUSIC Folder
 - Photo file → PHOTO Folder
 - Text file → E-Book Folder
 - System file → Config Folder

Delete Files

Select the files to delete and press the Delete button the keyboard to delete the files.
(But the recycle bin must be emptied to completely delete the files.)

Press Shift+Delete to completely delete the files at once.



- The player can recognize the files/folders on the player with limit but 6 sub folders in a folder.
- The CONFIG folder under JM52 root folder is the system folder to operate JM52.
If you delete this folder, the unit will not operate properly.
Therefore do not delete this folder.
If you delete the file and then start operating the unit, you will see the message saying "Please update file" and then the power will shutdown.
- To recover system file folder, copy the JM52.ROM file in the Firmware folder within the provided CD to the unit.



Connecting Devices

Using AC Power Adapter

- 1 Use only the supplied AC power adapter for safety.
The AC operating voltage of this player is 100~240V.
- 2 Connect the adapter to the USB connector of your player and then to the Main Power socket.
(Don't connect the adapter while power off)



- The battery is also charged when the USB cable is connected.
- It is re-chargeable during play, using AC adapter.
- If you connect a fully discharged unit to the PC using USB cable, the PC will identify the unit in about 3 minutes.
- **Battery charge sign**
 - USB connection (Charging)**
Switch back and forth between "Battery Charging" and "USB Connected".
 - USB connection (Charge completed)**
Switch back and forth between "Battery Complete" and "USB Connected".
 - AC adapter connection (Charging)**
Display "Battery Charging".
 - AC adapter connection (Charge completed)**
Switch back and forth between "Battery Charging" and "Charging Complete".

Charging

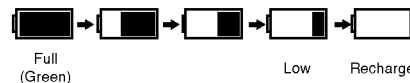
The player will be charged automatically when the AC adapter is connected to the player.

- Charging time : Approx.About 2 hours (At full discharge)
- Playback time : Approx.About 12 hours (At full charge)

Playtime is measured under playback of MP3 128 Kbps at full charge.



- Confirm the battery charge on the unit's display window.



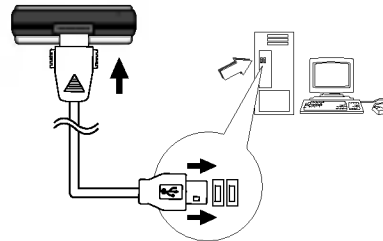
- The battery is all worn out, charging screen is appeared after connecting the USB cable and charge over the 3 minute.
- If you connect a fully discharged unit to charge, the battery charge sign will show up in about 3 minutes.
(To turn off the power, press the ►|| button for couple of seconds.)
- If you play files while charging, the charging will take longer.
(Connected to AC adapter)
- If you set the Settings > PowerSaving setting to "Off" and charge the unit, the unit may not be fully charged.



Connecting Devices (Continued)

Connecting USB Cable

- 1 Connect one end with the USB port on the back of your PC and then plug the other end into the USB connector of your Player.
 - Driver installation is required for the Windows 98SE operating. (Consult on page 19)



- 2 The following screen is displayed in the product LCD.



- 3 The icon is displayed in the PC tray if successfully connected.



- The tray icon may be hidden in some Windows XP operating system settings.



Connecting Devices (Continued)

Disconnecting USB Cable

Wait until you get a message saying that you can safely unplug the device before disconnecting the USB cable.

- 1 The safe remove icon is in the system tray next to the clock.



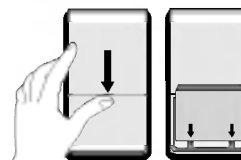
- 2 Click on the icon to eject the player from the computer and select the 'Safely remove' message.
- 3 There will be a message indicating that it is now safe to disconnect the player.
- 4 You can now go ahead and unplug the USB cable from the player.



• If the PC power is turned off or the USB cable is disconnected while data is being transferred, an HDD error in the product maybe generated.

About the Rechargeable Battery

- 1 Push the battery cover.



Battery

- TYPE NO: MB-PA106 (Li-Polymer)
- POWER : DC 3.7V(630mAh)

- 2 Insert the battery.
- 3 Close the battery cover.

⚠ CAUTION

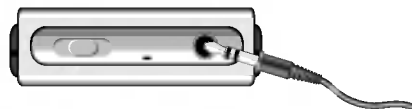
- Fully charge the battery before use.
- Charge and store the battery at room temperature. It may not charge properly in cold temperature environments
- Do not attempt to disassemble the battery.
- Do not expose the battery to open flame.
- These activities could cause the battery to explode resulting in serious injury.
- Do not contact the connectors of the battery to metal objects, or electrical shock may occur.
- Use only the supplied the battery.
- The battery life is 6 months and you can pay to buy additional batteries.



Before Operation

Connecting Earphone

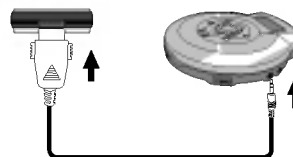
Connect the remote control to the socket on the top of the player.



Connecting External Device : Line-In

Connect external input devices.

- 1** Connect the LINE-OUT or earphone socket of the external device to the Line-In socket of the product with the Line In/Out cable.
- 2** Use the recording feature to record with the desired setting.



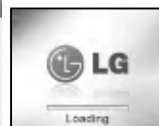


Before Operation (Continued)

Power On



- Push POWER switch in the ← direction.**
- The initial loading time will be required about 20 seconds.

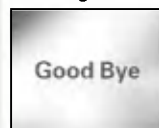


Power Off



- Instant off:**
- Push POWER switch for 2 seconds in the ← direction.
 - Press and hold ►|| button.

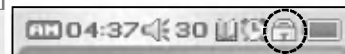
Automatic off:
The power will turn off automatically if there is no user action in stop mode within the configured Auto Off time.



Hold Function

This function locks the main unit to prevent it from operating when you accidentally press a button.

- Push HOLD button to lock position, hold icon appears in the LCD and all key operations will be disabled.



Adjust Volume

You can adjust the volume by pressing ▲ ▼ buttons.

- The volume level can be adjusted by 41 steps. (MIN, 01~39, MAX)



- The volume changes by 1 level when you press the button briefly, and it changes rapidly when you press and hold the button.



Menu Mode

The Menu Screen

The menu window appears for you select one of the 7 functions.

M

1 During playback, press and hold the MENU(M) button and then the functions menu will be appeared.



2 Select the menu with ^ v buttons.

ENT

3 Press the ENT button to execute the highlighted menu.



- If you don't press any buttons within about 20 seconds in menu, it will return to the previous screen.
- Press the M button in Menu mode to exit the Menu mode.

■ Music

This mode is for playing MP3, OGG or WMA files.

■ Video

This mode is for playing MPEG, WMV or AVI files.

■ Photo

This mode is for viewing JPEG files.

■ E-book

This mode displays the folder containing text files and allows you to read the content of a text file.

■ Radio

This mode is for listening to radio.

You can tune in the FM station as your choice.

■ Recordings

This mode allows you to make high quality voice recording.

This mode allows you to receive audio signals from an external audio player in MP3 format.

■ Settings

This mode changes the configuration to the device.



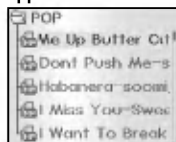
Menu Mode (Continued)

Using Navigation

The Navigation function allows you to navigate all the files on the player.
You can play titles, view images or display text files without switching modes.

ENT

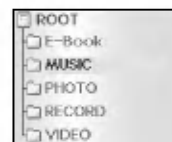
1 During playback, press the ENT button and then the files or folders will be appeared.



2 Use the \wedge \vee buttons to select the desired folder or file.



3 Press the < > buttons to return to the previous or forward folder to the next folder.



ENT

4 Press the ENT button.
The selected file will played.



- When a folder is selected in the navigation mode, press ENT button.
- Press the M button in Navigation mode to exit the Navigation mode.



Music Operation

Playing Music files

1 The playback standby screen follows the initialization screen when power is turned on.



2 The file will played.



What is ID3 Tag

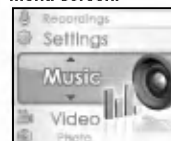
This is what is attached to an MP3 to carry information relevant to the file, such as the title, artist, album, year, genre and a comment field.

- Artist : To search all the files by singer.
- Album : To search all the files by album.
- Genre : To search all the files by file genre.
- Year : To search all the files by year.
- Song : To search all the files by files.
- Playlist : To display the list of currently selected files.

Using Title Information (ID3 Tag)

ENT

1 Choose the "Music" menu on the main menu screen.

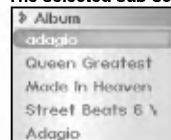


2 Use the \wedge \vee buttons to select the desired search method.



ENT

3 Press the ENT button. The selected sub screen is opened.



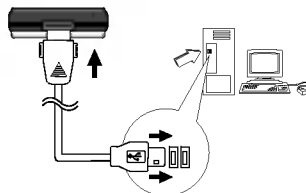


Music Operation (Continued)

Updating music information files

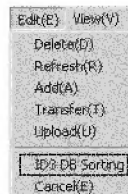
Updates the music information file for the current MP3 file. Use the function to create or repair the database file if the information file is deleted or damaged. A music information file is a database file, which is a collection of ID3 Tag information. The files are required for the ID3 Tag navigation function.

- 1 Connect the product to a PC using the USB cable. An icon is displayed in the PC tray if connection is successful.



- 2 Double-click the "MP3 Explorer" icon on the Windows desktop to open the Manager program.

- 3 Click the "ID3 DB Sorting" in the screen to update the Music Information File.



Click

- 4 DB scan is progressing.
- 5 'Safe Remove' the USB cable to disconnect the product from the PC.



• The data generation time can differ by file size.



Music Operation (Continued)

Setting Playlist

INF

- 1 Move to the file you want in Navigation mode and press the INF button. The selected file will be marked.



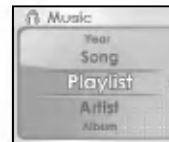
INF

- 2 To cancel the playlist setting. Move the marked file in the Navigation mode and the press the INF button again.

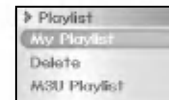
Playing Playlist

ENT

- 1 Select "Playlist" in the menu.



- 2 Select "My Playlist" in the sub menu.



- 3 Use the ^ V buttons to select the desired file.



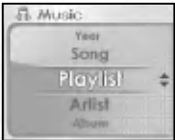
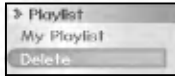

ENT

- 4 Press the ENT button to play.


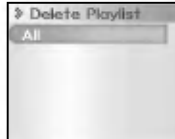


Music Operation (Continued)

Delete One Playlist

- ENT** 1 Select "Playlist" in the menu.
- 
- ↕** 2 Select "Delete" in the sub menu.
- 
- ↕** 3 Use the ^ v buttons to delete the desired file.
- 
- ENT** 4 Press the ENT button to delete.
The file is deleted.

Delete All Playlist

- ↕** 1 Select "All" in the sub menu.
- 
- ENT** 2 All playlist is deleted.
- 



• MSU play list can only be deleted from the PC.



Music Operation (Continued)

Setting Playlist : M3U

Use the Winamp software to create the PLAYLIST. Winamp is freeware software and available for download from <http://www.winamp.com/player>.



- 1 Double click the downloaded file to install.
- 2 After completing the installation, click Start > Program > Winamp > Winamp to start the Winamp software.



- 3 Connect one end with the USB port on the back of your PC and then plug the other end into the USB connector of your Player.

- 4 Click the PL button in the Winamp window to open the PLAYLIST EDITOR window.



- 5 Click the add button in the Playlist Editor window to select files or folders to add.
- 6 When the selected files are added and displayed, click the Manage Playlist then click the Save Playlist button in the following pop menu.





Music Operation (Continued)



7 Input the file name in the Save Playlist dialog. Click the Save button to create an *.m3u file. Save m3u files to the removable disk > MUSIC > PLAYLIST.

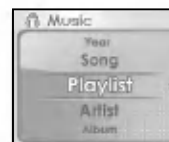


• When saving the file, it must be done in the MUSIC>PLAYLIST folder for the file to be identified by the unit.

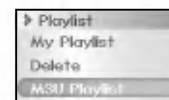
Playing M3U Playlist

ENT

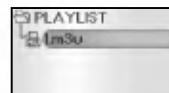
1 Select "Playlist" in the menu.



2 Select "M3U Playlist" in the sub menu.



3 Use the ^ V buttons to select the desired file.



ENT

4 Press the ENT button to play.



Music Operation (Continued)

To Pause Files



Press ►|| button during file playing.
To resume playback, press this button again.



Fast-forward/Fast-reverse



Press and hold the <> buttons during file playing for fast-forward or fast-reverse playback.

Playing next/previous file



To skip the next file
Press briefly the > button on the main unit to select the next file.

To skip the previous file
Press briefly the < button on the main unit within 5 seconds of playing time.

To return the beginning of the current file
Press briefly the < button on the main unit after 5 seconds of playing time.



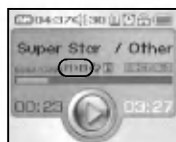
Music Operation (Continued)

Local Repeat A-B

you can repeat a portion of the current file.

REC

- 1 File playing, press REC button once.
A > appears in the LCD.



REC

- 2 To select the local repeat ending point you want during file playing, press the button again.
A > B appears in the LCD.

REC

- 3 To cancel local repeat function, press REC button.
A > B disappears in the LCD.



- If you select local repeat ending point within 1 seconds, after setting the local repeat starting point, it is not operated.
- The Book Mark and Local Repeat A-B function is not available in Video/FM mode.

Changing the EQ

INF

While playing a music file, press the INF button to change the EQ mode.



REC

While playing a music file, press and hold the REC button to change the play mode.





Music Operation (Continued)

Book Mark Function

You can set Book Mark function during file playing and then you can search for the Book marking point of the track automatically.

INF

Bookmark during playing

1 Press and hold the INF button during playing the music.

The select position is marked.



• A maximum of 20 bookmarks can be saved.

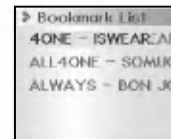
INF

Playback the stored Bookmark files

1 Press the INF button in stop state.



2 Use the Δ ∇ buttons to select the bookmarked files.



ENT

3 Press the ENT button.

The selected file will played.



Music Operation (Continued)

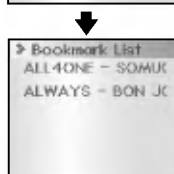
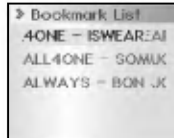
INF

Delete the stored Bookmark files
1 Press the INF button in stop status.



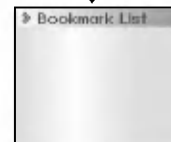
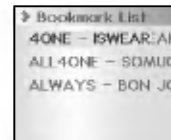
INF

2 Press the INF button.
The file is deleted.



INF

3 Press and hold the INF button.
Deletes all files bookmarked.



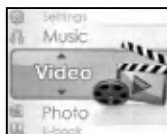


Video Operation

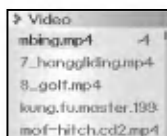
Playing Video Files

ENT

1 Choose the "Video" menu on the main menu screen.



2 Use the \wedge \vee buttons to select the desired folder or files.



ENT

3 Press the ENT button.
The selected file will played.



This player can not play caption file.

To Pause Files



Press || button during file playing.
To resume playback, press this button again.

Playing next/previous file



To skip the next file

Press $>$ button on the main unit to select the next file.

To skip the previous file

Press $<$ button on the main unit to select the previous file.

Fast-forward/Fast-reverse



Press and hold the $<>$ buttons during file playing for fast-forward or fast-reverse move.



Files having no conversion program in the transcoder provided by our corporation are not played.

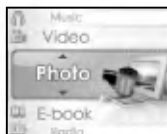


Photo Operation

Playing Photo Files

ENT

1 Choose the "Photo" menu on the main menu screen.



2 Use the \wedge \vee buttons to select the desired folder or files.



ENT

3 Press the ENT button.
The selected file will played.



Playing next/previous file



To skip the next file

Press > button on the main unit to select the next file.

To skip the previous file

Press < button on the main unit to select the previous file.



- It doesn't support a Photo function when for a progressive JPEG file.
- What progressive JPEG?
progressive JPEG is JPEG image that is displayed getting focused on gradually.
- For the file types that are not supported by the unit, convert them to *.jpg files with a graphic tool in the PC and use them in the unit.
- Press the \blacktriangleright \parallel button to return to file list.



Photo Operation (Continued)

Zoom



1 Press the \wedge \vee buttons to enlarge the picture. (Normal ~ 9 time)



\wedge : Zoom up
 \vee : Zoom down

ENT

2 Press the ENT button.



• Change to Move mode



3 Press the \wedge \vee $\langle \rangle$ buttons to move zoom point at zoom mode.



• Press the ENT button in Move mode to exit the Move mode.

Viewing Slide Show

The slide show plays all photo files within the Photo folder.

INF

1 Press and hold the INF button to play Slide Show.

INF

2 If you want to stop Slide Show, press the INF button.



- You can set slide time on the "settings" menu.
- Slide show viewing may be slow if the image files are too large.
- You can view photo files while listening to music.

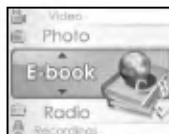


E-book Operation

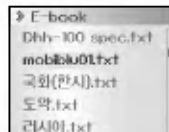
Playing Text Files

ENT

1 Choose the "E-book" menu on the main menu screen.

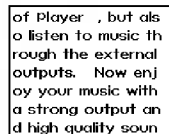


2 Use the ^ V buttons to select the desired folder or files.



ENT

3 Press the ENT button. The selected file will played.



4 Use the < > buttons to move to previous or next page during reading text file.



- The screen can display 19 characters across and 7 line.
- You can read text file while listening to music.
- The Text File may break or can't be displayed when it is not fit into the country code.
- Press the ►|| button to return to file list.

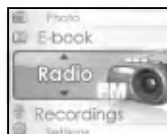


FM Radio Operation

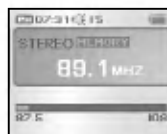
Listening to the FM radio

ENT

1 Choose the "Radio" menu on the main menu screen.



2 Radio screen will appeared.



Changing Frequency mode

M

Press the M button during FM radio receiving. (MEMORY ↔ PRESET)

The button serves to switch over between MEMORY mode and PRESET mode.

MEMORY Mode :

Input the frequency directly.

PRESET Mode :

Select from the saved channel list.

Searching Frequency

Manual Tuning :

Press the <> button repeatedly.

Auto Tuning :

Press and hold the <> button.

Automatically scan and turns to the next or previous available station.



- FM Tuner reception may vary in different areas.
- If you are in the area of low sensitivity, radio receiving may not be good.
- If you press the ►|| button during FM radio receiving, the sound is muted.

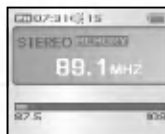


FM Radio Operation (Continued)

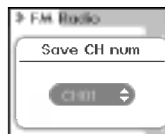
Saving Frequency

INF

1 Press the INF button while listening to FM radio.



2 Select the desired channel using ^ V buttons.



ENT

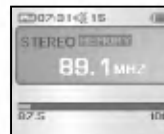
3 Press the ENT button, and then the current broadcast is stored at PRESET.

Auto Scan

INF

All available radio stations with sufficient signal strength will be stored automatically.

1 Press and hold the INF button while listening to FM radio.



2 You can see the frequency increasing. Channels are automatically scanned and saved in order in Preset.



- In area with weak signals, some channels may not be saved.
- A maximum of 20 channels can be saved.

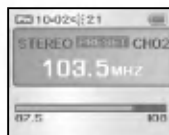


FM Radio Operation (Continued)

Deleting Stored Frequencies

M

1 Press the M button to enable PRESET mode.



2 Select the desired channel using <> buttons.

INF

3 Press and hold INF button.
The selected channel will be erased and the next channel will be displayed

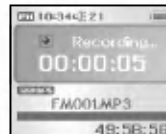


• If all channels are deleted, PRESET mode will be disabled until another station is stored.

Recording FM Radio

REC

1 Press and hold the REC button while receiving FM radio.



REC

2 To stop recording, press the REC button.
The recorded files are stored in the RECORD folder in the following format: FM001.MP3 or FM002.MP3...



• If you want to pause recording, press the ►|| button.



Recording Operation

Recording Voice

ENT

1 Choose the "Recordings" menu on the main menu screen.



2 Select "Voice Records" by pressing \wedge \vee buttons.



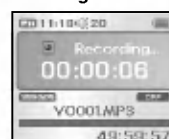
ENT

3 Press the ENT button, and then Record screen will be appeared.



REC

4 Press the REC button to start recording.



REC

5 To stop recording, press the REC button.

The recorded files are stored in the RECORD folder in the following format: V001.MP3 or V002.MP3...



- If you want to pause recording, press the $\blacktriangleright\parallel$ button.
- If the memory is full, recording is stopped automatically.
- If the volume level is extremely high, the sound quality may not be good.
- A higher Bit Rate increases the quality but reduces recording time.
- Volume can not be controlled while recording.

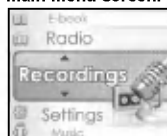


Recording Operation (Continued)

Recording Line-in

ENT

- 1 Choose the "Recordings" menu on the main menu screen.

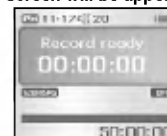


- 2 Select "Line In Records" by pressing ^ v buttons.



ENT

- 3 press the ENT button, and then Record screen will be appeared.

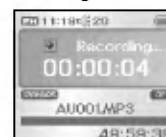


REC

- 4 Connect an external audio output to the product line-in port.

Press PLAY on your external equipment to begin playback to be recorded.
(Please see page 26)

- 5 Press the REC button to start recording.



REC

- 6 To stop recording, press the REC button.

The recorded files are stored in the RECORD folder in the following format:
AU001.MP3 or AU002.MP3...

- If you want to pause recording, press the ►|| button.





Recording Operation (Continued)

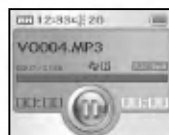
Playing the Recorded file

M

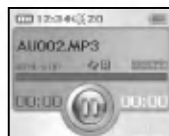
1 Press the M button in recording standby mode to play the recorded file.



2 The selected file is appeared.



Voice Record



Line-In Record



FM Record



3 Press the play/pause button to play.



- The Recorded files are stored in the current folder.
Voice Record : RECORD / VOICE
Line-In Record : RECORD / LINE-IN
FM Record : RECORD / FM

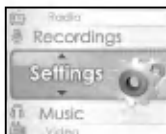


Settings Operation

Settings Mode

ENT

1 Choose the "Settings" menu on the main menu screen.

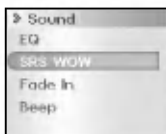


2 Press ^ v buttons to select the desired menu.



ENT

3 Press ENT button to select the desired sbu menu.



- Press the M button in Settings mode to exit the Settings mode.
- Press the < > buttons to return to the previous screen or forward to the next screen.



Settings Operation (Continued)

Sound

■ EQ

You can select various EQ modes.



Normal , Pop , Rock , R&B/Soul , HipHop , Rap , Electronic , Blues , Newage , Jazz , Folk , Country , Classical , Latin Music , Reggae , Ballad , Dance , Live , Techno , Full Bass , User1 , user2

You can adjust the sound to your preference.



- Use the < > buttons to select the frequency band.
- Use the ^ v buttons to adjust the level.
- Press the ENT button to confirm.

■ SRS WOW

You can select various 3D sound effect.



ITEM	Description	Steps
On/Off	SRS On/Off	On/Off
SRS WOW	Enjoy the 3D sound effect.	0~10
TruBass	Improve the bass sound to make spectacular.	0~10

- is a trademark of the SRS Labs, Inc.
- WOW technology is incorporated under license of the SRS Labs, Inc.

- Use the ^ v buttons to select the desired item.
- Use the ^ v buttons to step.
- Press the ENT button to confirm.



Settings Operation (Continued)

■ Fade In

When activated, volume increases gradually at playback mode to prevent sudden loudness.



ITEM	Description
On	Volume gradually increases when playback starts.
Off	Music is played at the volume you set.

- Use the \wedge \vee buttons to select On or Off.
- Press the ENT button to confirm.

■ Beep

Set the beep sound for every time a button is pressed on the player.



ITEM	Description
On	The set beeps when the buttons are pressed.
Off	The set does not beep.

- Use the \wedge \vee buttons to select On or Off.
- Press the ENT button to confirm.



Settings Operation (Continued)

Display

■ ID3 Tag

Display ID3 Tag music file information.
If "Off" is selected only file name is displayed.



ITEM	Description
On	Display the ID3 Tag information.
Off	Display the name of music file.

- Use the \wedge \vee buttons to select On or Off.
- Press the ENT button to confirm.

■ Scroll Speed

Set the scroll speed for texts on the LCD.
X1/2 , X1 , X2 , X3



- Use the \wedge \vee buttons to the desired item.
- Press the ENT button to confirm.



■ Slide Show Time

Set the slide show time for photo files in the "Photo" mode.

5 Sec , 10 Sec , 20 Sec , 30 Sec , 1 Min , 2 Min



■ Brightness

Set the LCD brightness.

0 ~ 9



- Use the \wedge \vee buttons to the desired item.
- Press the ENT button to confirm.

■ Auto Screen Off

Set the time for which the LCD backlight is turn on.

Always On , 5 Sec , 10 Sec , 30 Sec , 60 Sec



■ Lyrics On/Off

Display lyric of MP3 file.

If "Off" is selected only file name is displayed.



ITEM	Description
On	Display lyric of MP3 file.
Off	Display name of the MP3 file.



Settings Operation (Continued)

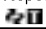








Play Mode

■ Play Mode

Set the repeat playback mode.



- Use the \wedge \vee buttons to the desired item.
- Press the ENT button to confirm.

ITEM	Description
Repeat One 	Plays repeatedly the current selected file.
Folder 	Plays the current selected folder.
Repeat Folder 	Plays repeatedly in within folder.
Random Repeat Folder 	Plays all files randomly in within folder.
All 	Plays all files.
Repeat All 	Plays repeatedly all files.
Random Repeat All 	Plays all files randomly in random order.
Intro 	Plays the first 10 seconds of each file in hard disk.
Study 	Skip the set period of time while playback.



Settings Operation (Continued)

Rec Setup

■ Radio

Set the FM recording quality.
Bit Rate : 96,128,192 Kbps



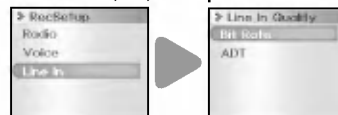
■ Voice

Set the Voice recording quality.
Bit Rate : 96,128,192 Kbps



■ Line In

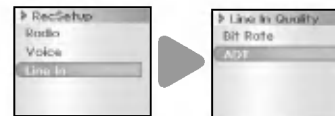
Set the Line In recording quality.
Bit Rate : 96,128,192 Kbps



■ ADT (Auto Detect)

ADT is a function for separating and saving MP3 files when there is no sound for a set time during MP3 encoding.

Off , 2 Sec , 3 Sec , 4 Sec , 5 Sec



- Use the ^ v buttons to the desired item.
- Press the ENT button to confirm.



Settings Operation (Continued)

Timer

■ Set Time

Sets the current time.



- Use the < > buttons to move to the next stage.
- Use the ^ v buttons to select the desired item.
- Press the ENT button to confirm.

■ Sleep Mode

Automatically turns power off after fixed time.

Off , 10 min , 30 min , 1 hrs , 2 hrs



- Use the ^ v buttons to the desired item.
- Press the ENT button to confirm.

■ Auto Power Off

Automatically turns power off at stop mode after fixed time.

Off , 30 sec , 1 min , 5 min , 10 min



- Use the ^ v buttons to the desired item.
- Press the ENT button to confirm.



Settings Operation (Continued)

Alarm

■ Setting

Sets the time to activate the alarm function.
Always , once , Off



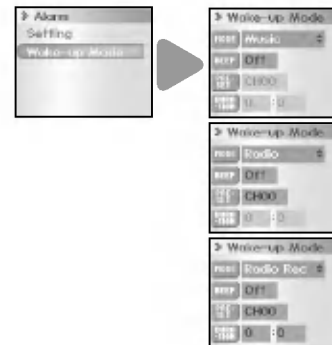
- Use the < > buttons to move to the next stage.
- Use the ^ v buttons to select the desired item.
- Press the ENT button to confirm.



- The player automatically powers on after the time you set.

■ Wake-up Mode

Sets the alarm mode to activate the alarm function.
Music , Radio , Radio Rec



- Use the < > buttons to move to the next stage.
- Use the ^ v buttons to select the desired item.
- Press the ENT button to confirm.



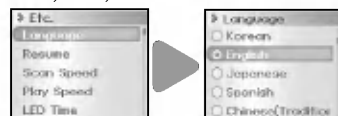
Settings Operation (Continued)

Etc.

■ Language

Sets the display language.

KOR , ENG , JAP , SPA , CHI(TRA) , CHI(SIM) , POR ,
FRE , GER , RUS



■ Scan Speed

Sets the speed of fast scan.

X2 , X4 , X8



■ Resume

Playback will begin from the same mode when the
player is stopped or power off.

On , Off




■ Play Speed


Sets the speed of music files to play at variable
speeds.

X1/3 , X1/2 , X1 , X1.5 , X2



 The resume function is not available in Photo, Line In,
Voice mode.

- Use the \wedge \vee buttons to the desired item.
- Press the ENT button to confirm.

 OGG file supports the 1X.



Settings Operation (Continued)

■ LED Time

Sets the time that the LED backlight stay on.
Off , Real Time , 1 Sec , 2 Sec , 3 Sec , 5 Sec



- Use the \wedge \vee buttons to the desired item.
- Press the ENT button to confirm.

■ Calender

Sets the display calender.



- Use the \lt \gt buttons to select the desired item.
- Use the \wedge \vee buttons to move to the next stage.
- Press the ENT button to confirm.

■ PowerSaving Mode

Automatically turns hard off at stop mode after fixed time.
On , Off



■ Initialize

Sets all the function to their factory settings.
YES , NO



■ Sys Info

You can check the firmware version and memory capacity.



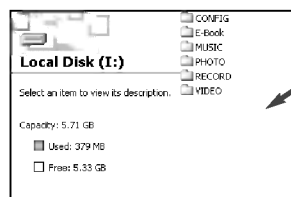


Firmware Operation

Upgrading Firmware

You can upgrade FIRMWARE to add, change or improve the functions of the player, in which the Firmware means its Operating System.

- 1 Visit the company website (www.lge.com) to check if there is an upgraded version available for the player. Service Site → Select your country → SUPPORT → Download
- 2 Uncompress firmware file from the download file.
- 3 Use the USB cable to connect the device to your PC.
- 4 Copy and paste the firmware file (JM52.ROM) in local disk JM52.



- 5 Disconnect the USB cable and turn device on again. The message "Upgrade" appears automatically and starts upgrading.



- Do not disconnect the AC adapter or turn the power off until the Firmware Upgrade is completed.
- Firmware update can be unsuccessful if the battery is not charged enough. (Maintain at least 2 or more levels of battery power.)

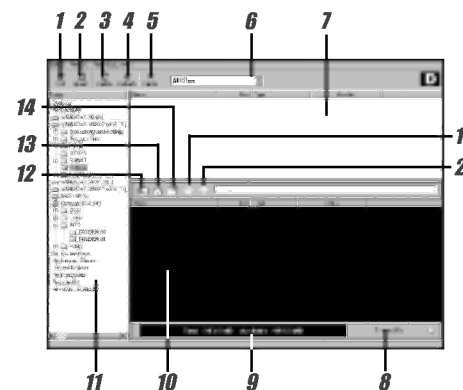


Using PC Program

Using Explorer

The MP3-Explorer is the software that interacts with the MP3 Player and a PC. MP3 files or any data files can be downloaded to the MP3 Player or vice versa.

Double-click the “MP3 Explorer JM52” icon on the Windows desktop to open the MP3-Explorer program. The following figure describes the MP3-Explorer program. The various features are explained below.



1 Add : Adds the file list window of MP3 Player to a downloading file.

2 Upload : This will allow you to copy the selected file on the MP3 Player.

3 Delete : Deletes the selected item.
(The files PC folder window are not deleted.)

4 Refresh :
Refreshes the contents of the current page.

5 Cancel : Cancel the selected item.

6 Displays the file types (All files, Audio files, Document files, Image files).

7 File list window of PC.

8 Transfer(F6) :
Downloads the selected file on the PC onto the file list window of MP3 Player.

9 Displays the total and available space of the MP3 Player.

10 The file list window of MP3 Player.

11 PC folder window.

12 Moves to upper folder.

13 Moves to Root directory.

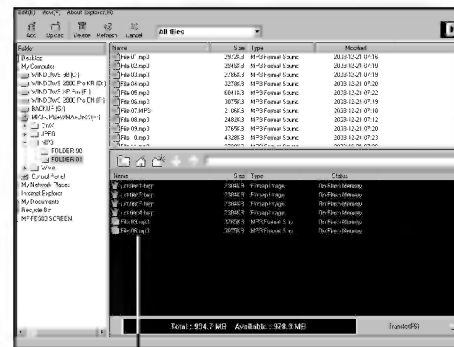
14 Creates a new folder in the the file list window of MP3 Player.



Using PC Program (Continued)

5 The selected file has been downloaded.

Now you can listen to music with the MP3 Player after removing the USB cable.



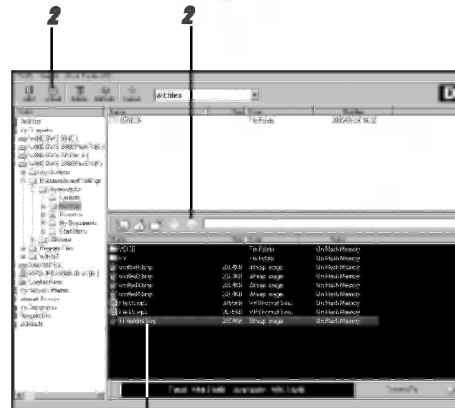
- Do not remove the USB cable while downloading files.
- Even if there is space in the MP3 player, some files may not download if the name is too long.



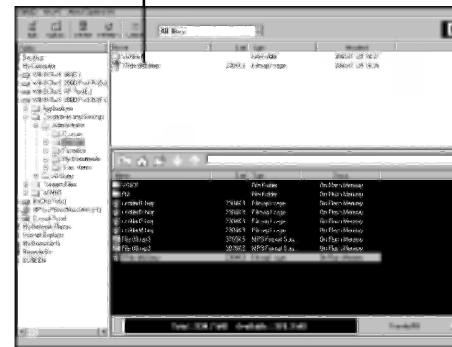
Using PC Program (Continued)

To upload files

- 1 Select file(s) to upload.
- 2 Click the "Upload" or "⇧" icon.



- 3 The selected file has been uploaded.



MP3 and WMA files are not available to upload. But, you can upload the MP3 files recorded using MP3 player.

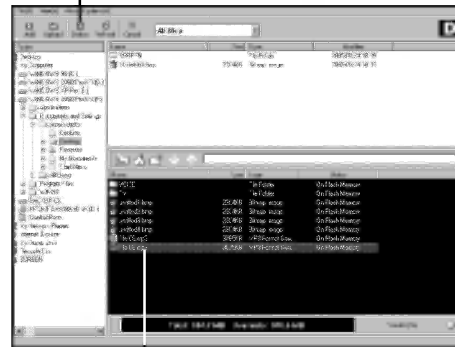




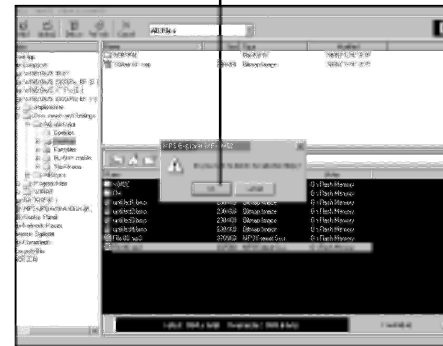
Using PC Program (Continued)

To delete the files

- 1 Select the file(s) to delete.
- 2 Click the "Delete" icon.



- 3 Click "OK".



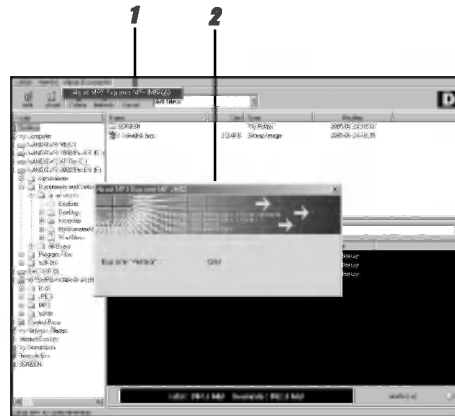


Using PC Program (Continued)

To check version information

You can check OS version and Explorer version information.

- 1 Click "About Explorer" → "About MP3 Explorer JM52".
- 2 The Explorer Version will be shown on the screen.



MP3 Explorer update

It means updating necessary files used by Explorer program.

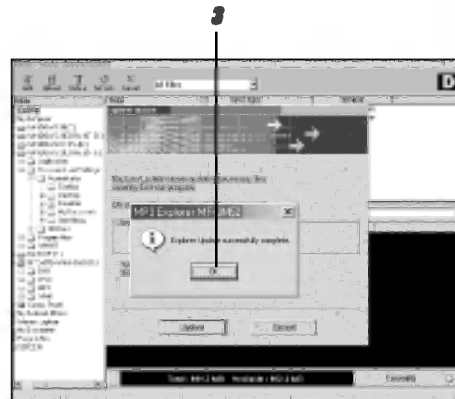
- 1 Click "View" → "Explorer Update".
- 2 Click "Update".





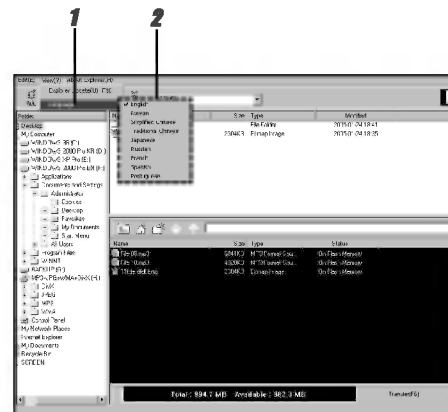
Using PC Program (Continued)

3 Click "OK".



To select menu language

- 1** Click "View" → "Language".
- 2** Select the menu language by moving the mouse.

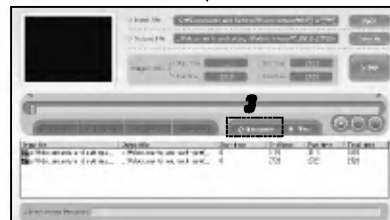




Using PC Program (Continued)

Transcoder

This program used to convert common motion image formats such as MPEG, WMV and AVI to MPEG4 format.



File conversion

1 Double click on “JM52 Transcoder” on the desk top.

2 Click “ **Open** ” button to choose input file.

3 Click “ **Encode** ” button.

It stops and is saved automatically at the completion of transcoding.



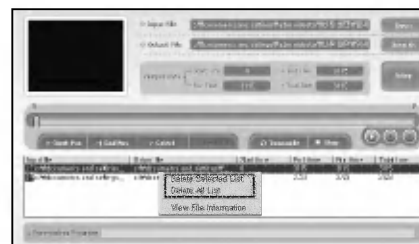
Using PC Program (Continued)



Sectioned file conversion

A specified section in a file can be transcoded.

- 1** Move file selection.
- 2** File play “▶”
- 3** Shift seek bar to desiring position.
- 4** Click “▶” button to set beginning point.
- 5** Click “▶” button to set ending point
- 6** Click “▶” button to enter the section.
Click “▶” button to cancel the section.

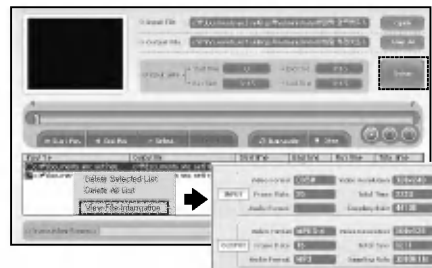


Delete List

To cancel a registered file, click on the file in the list box and choose “Delete Select List” using the right mouse button. Click on “Delete All List” in the box to cancel all registered files.



Using PC Program (Continued)



View file information

You can see file information by choosing “View File information” by double clicking on one of key-registered file list or by using the right mouse button.

The title information dialog box will disappear when clicking on ESC.

Set options for video and audio, and choose a directory where you want to store output files in.

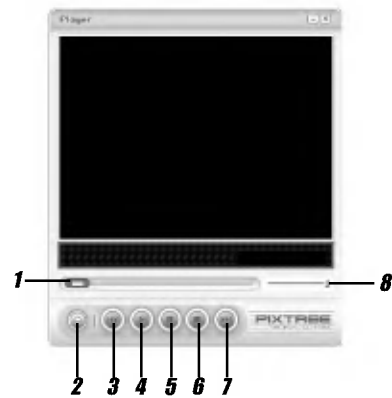


- The optimal frame size for viewing on the unit is 160X128.
- You can change the file saving path in Setup > Path.
- If you do not have the proper codec for file conversion, it can unsuccessful. Therefore it is recommended that you download and install the free integrated codec from the Internet.



Using PC Program (Continued)

JM52 Player



- 1** Progress bar
- 2** Open button
- 3** REW < button
- 4** Play button
- 5** Pause button
- 6** Stop button
- 7** FF > button
- 8** Volume button



- It only plays the file converted with the JM52 Transcoder.



Using PC Program (Continued)

Recovery Brain Shower

- 1 Use the USB cable to connect the device to your PC.
- 2 Choose Program → Brain Shower Recovery in the “Start” menu to start firmware upgrade process.



- 3 Click the “Down Load” button to start.
- 4 The Recovery will be transferred to the player. please wait until it has finished.



- Brain Shower files are the music files to clear your head.

Lyrics Palette



Lyrics Palette is a program for playing mtp files using the Digital Right Management (DRM) technology.

This program also enables users to play music files with lyrics made by Lyrics Palette.

For music files without lyrics, users can search for the lyrics on the web and insert them into the music files.

- Run Lyrics Palette and press F1. Help will appear.



Troubleshooting

Problem	Solution
Power cannot be turned on	<ul style="list-style-type: none">• Check the charge of the battery. Connect the AC adapter to charge.
LCD screen is too dark	<ul style="list-style-type: none">• Check the brightness setting of the LCD screen.
No sound or poor sound quality	<ul style="list-style-type: none">• Check that if connectors of the remote controller and earphones are clean.• Check that the music files on this device are in the correct format and are not corrupt.
Buttons will not function	<ul style="list-style-type: none">• Check whether the Hold function is activated.• Remove and then put the battery if the product stops and does not operate.
Text in the LCD distorted	<ul style="list-style-type: none">• Check the correct language setting.
Heavy noise in radio reception.	<ul style="list-style-type: none">• See if earphones are connected. The earphones as an antenna for the radio reception.• If the earphones are connected, try moving direction of the product and earphones.
Files are not downloaded.	<ul style="list-style-type: none">• See if the USB cable is correctly connected.• See if the AC adapter is correctly connected. If there is not enough battery charge, the download may not function properly.

What's DRM?

DRM is technology and service to protect interests and rights of the parties related with copyright by preventing unauthorized use of digital contents. This product uses the Marktek's DRM.



Specifications

TYPE	ITEM	SPECIFICATION
HDD	Capacity	4GB , 6GB
	Size	1"
	File System	FAT32
PC	Operating System	Win98SE/ ME / 2000 / XP
	Interface	USB 2.0
AUDIO	Frequency Range	20Hz~20KHz
	S/N Ratio	80dB
	Channel Separation	35dB(1KHz)
	Output Power	18mW+18mW (SRS WOW)
FM RADIO	Frequency Range	87.5MHz~108MHz
	S/N Ratio	38dB
	Channel Separation	25dB
	Antenna	Earphone Antenna
VIDEO	LCD	TFT LCD(1.8") 260,000 Color
	PLAYBACK TIME	VIDEO 44KHz / 128Bps / VOL15 About 5Hours
	AUDIO	44KHz / 128Bps / VOL15 About 12Hours

POWER SUPPLY	AC Adapter	DC 5.0V, 2A
	Battery	Lithium Polymer Battery 630 mAh
GENERAL	Size	54.4[W] X 95.5[H] X 16.6[D]
	Weight	97 g
	Temperature	0°C ~ + 40°C
FILE TYPE	AUDIO	MP3 / OGG / WMA
	VIDEO	MPEG / WMV / AVI (The file conversion to the MPEG4)
	IMAGE	JPEG

This product is manufactured to comply with the radio interference requirements of EEC DIRECTIVE 89/336/EEC, 93/68/EEC and 73/23/EEC.



P/NO : 3834RL0016T