

NEW_LGECB_XC12_ENG_MFL38343835



MODEL : XC12

ENGLISH

There is so much your Hi-Fi system can do

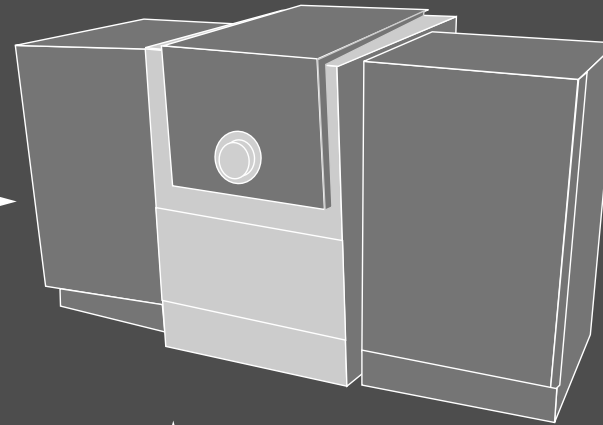


Record from a CD
or radio to cassette

Go to page 8

Lull me to sleep
and wake me up

Go to page 9



Contents

| | |
|--|----|
| Setting up | 3 |
| About Player | 4 |
| About Remote control | 5 |
| Listening to CDs | 6 |
| Connecting your portable USB player - OPTIONAL | 6 |
| Listen to cassette tapes | 7 |
| Listening to the radio | 7 |
| Recording | 8 |
| Listening to music from your portable player | 8 |
| Setting the Clock | 9 |
| Use your player as an alarm clock | 9 |
| About MP3/WMA | 9 |
| Safety Precaution | 10 |
| Troubleshooting | 11 |
| Specifications | 11 |

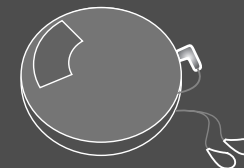


Play CDs and
cassettes

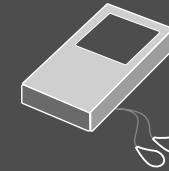
Go to pages 6 & 7

Play from many
external devices

Go to page 8



Portable CD player



MP3 player

Before connecting, operating or adjusting this product, please read this instruction booklet carefully and completely.

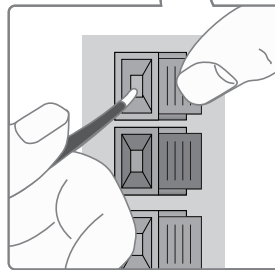
Setting up

ENGLISH

1 Connect the speaker cables to the player

Cables from the left-hand speaker connect to the terminal marked L (left) + (plus) and - (minus). Cables from the right-hand speaker are connected to the terminal marked R (right) + (plus) and - (minus).

To connect the cable to the player, press each of the four square plastic finger pads on the rear of the player. The connector will open ready to receive a cable.



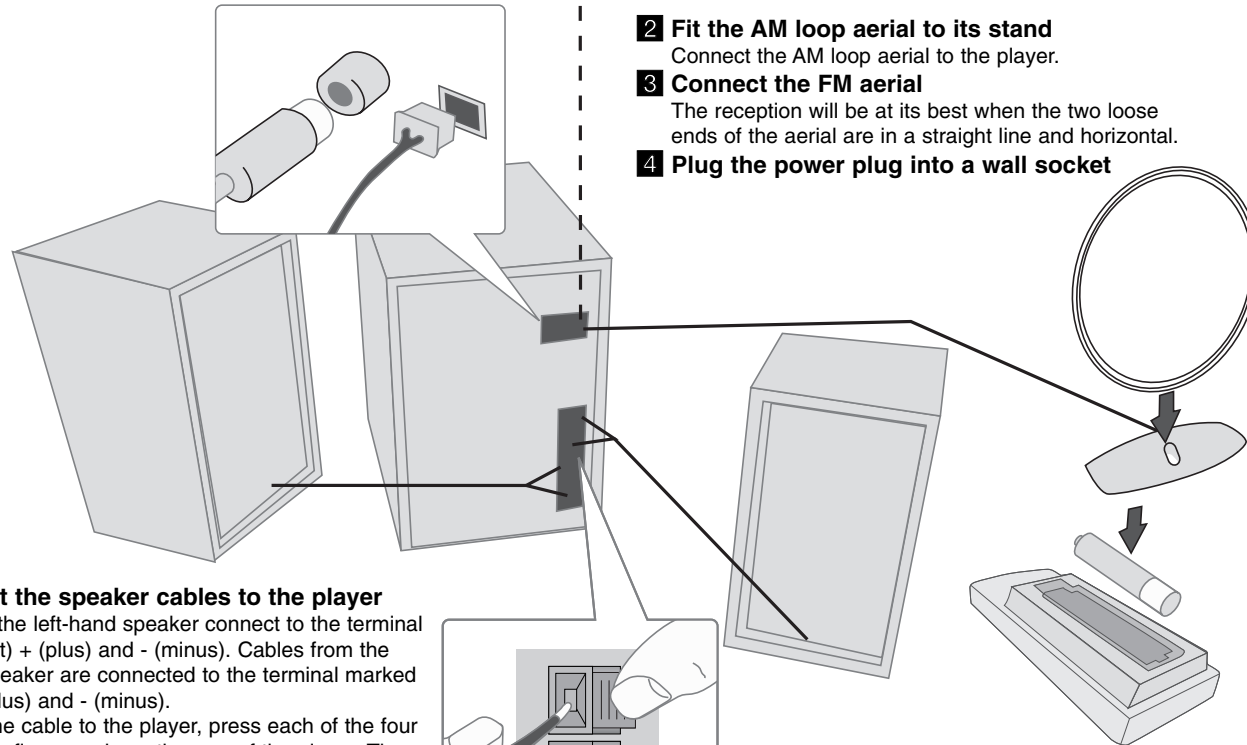
2 Fit the AM loop aerial to its stand

Connect the AM loop aerial to the player.

3 Connect the FM aerial

The reception will be at its best when the two loose ends of the aerial are in a straight line and horizontal.

4 Plug the power plug into a wall socket



Put the battery in the remote control

Make sure that the + (plus) and - (minus) on the battery (size AAA) match those on the remote control.

About Player

▲ PUSH (CD door)

You can use it when inserting or removing CDs. Don't open the door while CD plays back.

MODE/RIF

This will change the tuner from stereo to mono and usually improve the reception.

VOLUME

Control the volume when using any function.

PHONES (Headphone jack)

Connect a headphone plug (∅3.5 mm) into the jack to listen to the sound through headphones. Connecting headphones (not supplied) will switch off the speakers.

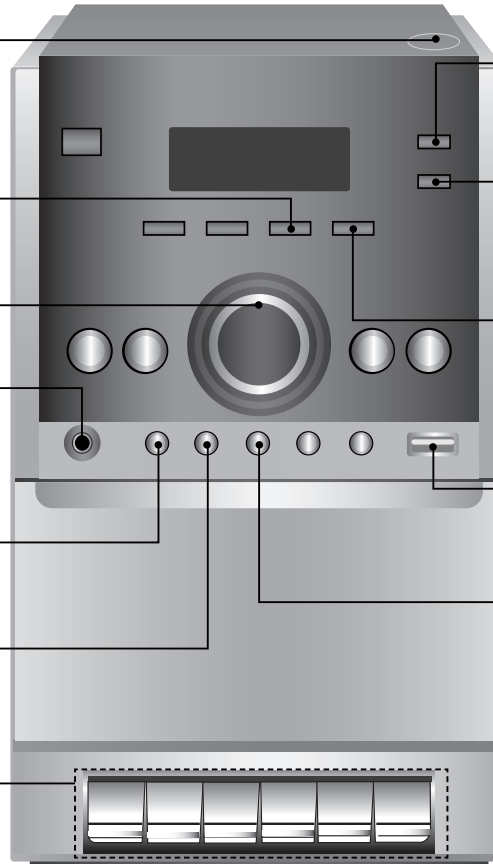
CLOCK

For setting the clock and checking the time. (see Setting the Clock)

TIMER

With the TIMER function you can turn CD play and radio reception on or off at a desired time. (see Use your player as an alarm clock)

Use when playing a cassette tape



eXtreme Dynamic Sound System

Reinforce the treble, bass and surround sound effect. XDSS ON will show in the display. Press again for XDSS OFF.

Sound quality adjustment

You can choose between 4 fixed sound impressions. Select a desired sound mode by using **EQ**. (FLAT → ROCK → POP → CLASSIC)

RDS (OPTIONAL) /SET

RDS shows information about radio stations. (see Listening to the radio)
SET confirms the time you have selected when setting the clock. (see Setting the clock)

USB connector - OPTIONAL

Connect a remote USB compatible player here.

OPTIMIZER

Optimizes compressible MP3 files so that it improves the bass sound. (MP3 - OPT ON → MP3 - OPT OFF)

About Remote control

Fall asleep while listening to your player
 Firstly, start a radio station or music. Press **SLEEP** one or more times to select delay time between 10 and 90 minutes, after the player will turn off.

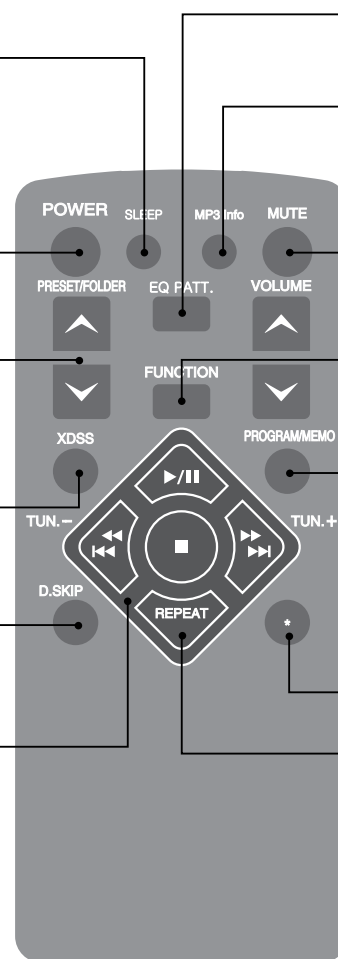
Turn on or off

Search for a folder of MP3/WMA files
 When a CD containing MP3/WMA files in several folders is being played, press **PRESET/FOLDER** to select the folder you want to play.
Choose a 'preset number' for a radio station (see Listening to the radio)

eXtreme Dynamic Sound System
 Reinforce the treble, bass and surround sound effect.

Moving to other cards - OPTIONAL
 In case that more than two memory cards are connected to the USB port, press **D.SKIP** to select a card you want to use.

Use when playing a CD



Sound quality adjustment

You can choose between 4 fixed sound impressions.

See information about your music

MP3/WMA files often come with tags. The tag gives the Title, Artist, Album or Time information. Press **MP3 Info** while a file is playing to see this information.

Temporarily stop the sound

Press the button again to return to the sound.

To change the functions

Change the functions between FM, AM, CD, PORTABLE, TAPE, USB (OPTIONAL) etc.

For storing radio stations

If you have saved radio stations using **PROGRAM/MEMO**, you can scroll through them and select one. (see Listening to the radio)

Listen to your tracks in any order (see Listening to the CDs)

This button is not available.

Listen to your tracks again and again

Press **REPEAT** once to repeat the track currently playing. Press **REPEAT** twice to repeat the whole CD, or if you're listening to the whole folder of MP3/WMA CD. The display will show what is being repeated.

Listening to CDs

| | ON PLAYER | ON REMOTE |
|---|-------------------|-----------------|
| 1. Open the CD door: | ▲ PUSH | |
| 2. Insert the CD: Label facing up. | | |
| 3. Close the CD door: The display will show the total number of tracks (files). | ▲ PUSH | |
| 4. Select the CD function: | FUNCTION | FUNCTION |
| 5. Start the CD playing: | ▶/ | ▶/ |
| 6. To stop a CD playing: | STOP CLEAR | ■ |

Listening to CDs - more you can do

Pause or restart a CD

Press **▶/||** during playback. Press this button again to resume play.

Search for a section within a track

Hold **◀◀/▶▶** on the front panel or **◀◀◀◀/▶▶▶▶** on the remote control during playback. (This function is only available for Audio CD's.)

Speed search for tracks

Hold **◀◀/▶▶** on the front panel or **◀◀◀◀/▶▶▶▶** on the remote control. Track skips continuously in turn. For Audio CD, track skips continuously in turn only on stop mode.

Skip to another track

Press **◀◀/▶▶** on the front panel or **◀◀◀◀/▶▶▶▶** on the remote control.

Listen to your tracks in any order

Up to 20 tracks on a CD can be listened to in the order of your choice. Insert a CD and wait for it to be read. Press **PROGRAM MEMORY** on the front panel or **PROGRAM/MEMO** on the remote control, then use **◀◀/▶▶** on the front panel or **◀◀◀◀/▶▶▶▶** on the remote control to select the track. Press **PROGRAM MEMORY** or **PROGRAM/MEMO** again to save and select the next track. Press **▶/||**. To clear your selection, press **STOP CLEAR** (or **■**), **PROGRAM MEMORY** (or **PROGRAM/MEMO**), **STOP CLEAR** (or **■**).

Connecting your portable USB player - OPTIONAL

The advantage of connecting your portable USB player through the system's USB port is that the portable device can be controlled from the system. Connect the portable player to the system using a USB cable (not supplied).

| | ON PLAYER | ON REMOTE |
|---|-----------------|-----------------|
| 1. Select the USB function: | FUNCTION | FUNCTION |
| 2. The display will show CHECKING, followed by the number of files displayed: | | |
| 3. Press: | ▶/ | ▶/ |
| 4. Before disconnecting the portable USB player, change to any other function by pressing: | FUNCTION | FUNCTION |
| 5. Remove the USB player: | | |

NOTE : Some portable devices are not compatible with this system.

Listen to cassette tapes

| | ON PLAYER | ON REMOTE |
|------------------------------|-----------|-----------|
| 1. Open the tape door: | ■ ▲ | |
| 2. Insert the tape: | | |
| 3. Close the tape door: | | |
| 4. Select the TAPE function: | FUNCTION | FUNCTION |
| 5. Start the tape playing: | ▶ | |
| 6. To stop a tape playing: | ■ ▲ | |

Listen to cassette tapes - more you can do

To Play Fast backward or Forward

After pressing ◀◀/▶▶ during playback, or stop, press ▶ at a point you want.

Listening to the radio

Make sure both the FM and AM aerials are connected.

| | ON PLAYER | ON REMOTE |
|--|----------------|---------------|
| 1. Select either FM or AM: | TUNER/BAND | FUNCTION |
| 2. Select the radio station: | - TUNING + | TUN.- / TUN.+ |
| 3. To 'save' a radio station: A preset number will show in the display. | PROGRAM MEMORY | PROGRAM/MEMO |
| 4. To select a 'saved' station: | - PRESET + | PRESET/FOLDER |
| 5. To confirm press: Up to 50 radio stations can be saved. | PROGRAM MEMORY | PROGRAM/MEMO |

Listening to the radio - more you can do

Look for radio stations automatically

Press - TUNING + (or TUN.- /TUN.+) for more than 0.5 second. The tuner will scan automatically and stop when it finds a radio station.

Delete all the saved stations

Press and hold PROGRAM MEMORY or PROGRAM/MEMO for two seconds. "CLEAR" shows. Press STOP CLEAR (or ■) to erase all the saved stations.

Choose a 'preset number' for a radio station

Select a station you want by pressing - TUNING + or TUN.- /TUN.+ . Press PROGRAM MEMORY or PROGRAM/MEMO, the station flashes.

Press - PRESET + or PRESET/FOLDER to select the preset number you want. Press PROGRAM MEMORY or PROGRAM/MEMO to save it.

Improve poor FM reception

Press MODE/RIF on the front panel. This will change the tuner from stereo to mono and usually improve the reception.

See information about your radio stations - OPTIONAL

The FM tuner is supplied with the Radio Data System (RDS) facility. This shows the letters RDS on the display, plus information about the radio station being listened to. Press RDS on the front panel several times to view the information.

PTY - Programme Type, such as News, Sport, Jazz Music.

RT - Radio Text, the name of the radio station.

CT - Time Control, the time at the location of the radio station.

PS - Programme Service name, the name of channel.

You can search the radio stations by programme type by pressing - PRESET +. The display will show the last PTY in use. Press - PRESET + one or more times to select your preferred programme type. Press and hold - TUNING +. The tuner will search automatically. When a station is found the search will stop.

Recording

Record from a CD or radio to cassette

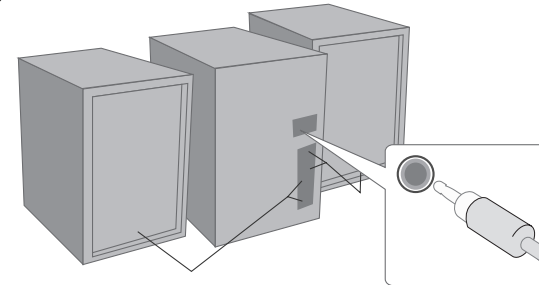
| | ON PLAYER | ON REMOTE |
|--|-----------|-----------|
| 1. Open the tape door: | ■▲ | |
| 2. Insert a blank tape: | | |
| 3. Close the tape door: | | |
| 4. Select a mode (FM/AM, CD, PORTABLE or USB (OPTIONAL)) in which you want to record: - For CD, press ►/II. | FUNCTION | FUNCTION |
| 5. Start the Recording: | ● | |
| 6. To stop a Recording: | ■▲ | |

CD Synchronized Recording

| | ON PLAYER | ON REMOTE |
|---|-----------|-----------|
| 1. Open the tape door: | ■▲ | |
| 2. Insert a blank tape: | | |
| 3. Select the CD function: | FUNCTION | FUNCTION |
| 4. Start the Recording: The synchronized recording is started automatically after about 7 seconds. | ● | |
| 5. To stop a Recording: | ■▲ | |


Listening to music from your portable player

The player can be used to play the music from many types of portable player.



| | ON PLAYER | ON REMOTE |
|---|-----------|-----------|
| 1. Connect the portable player by plugging the unit into PORTABLE IN on the back of the player. | | |
| 2. Turn the power on: | ⏻/⏻ | POWER |
| 3. Select the PORTABLE function: | FUNCTION | FUNCTION |
| 4. Turn the portable player on and start it playing: | | |

Setting the Clock

| | ON PLAYER |
|--|--|
| 1. Turn the power on: |  |
| 2. Press for at least 2 seconds: | CLOCK |
| 3. Choose from either: AM 12:00 (for an am and pm display) or 0:00 (for a 24 hour display) | - TUNING + |
| 4. Confirm your selection: | SET |
| 5. Select the hours: | - TUNING + |
| 6. Press: | SET |
| 7. Select the minutes: | - TUNING + |
| 8. Press: | SET |

Use your player as an alarm clock

Press and hold **TIMER** for two seconds. Each function, TUNER, CD, USB (in the USB supplied models) flashes for two seconds. Press **SET** when the function you want to be woken by is showing.

If you choose TUNER you will be shown the stations you have saved as presets. Use **- TUNING +** to select the station you want, then press **SET**. You will be shown the ON TIME display. This is where you set the time you want the alarm to go off. Use **- TUNING +** to change the hours and minutes and **SET** to save.

You will then be shown the OFF TIME display. This is where you set the time you want the function to stop. Use **- TUNING +** to change the hours and minutes and press **SET** to save.

Next you will be shown the volume (VOL) you want to be woken by. Use **- TUNING +** to change the volume and **SET** to save. Switch the system off. The clock icon shows that the alarm is set.

When the system is turned off you can check the time the alarm is set for by pressing **TIMER**. You can also turn the alarm on and off by pressing **TIMER**. To set the alarm to go off at a different time, switch the system on and reprogramme following the same steps as initially.

About MP3/WMA

MP3/WMA Disc compatibility with this unit is limited as follows:

- Sampling Frequency : 8 - 48 kHz (MP3), 32 - 48 kHz (WMA)
- Bit rate : 8 - 320 kbps (MP3), 48 - 320 kbps (WMA)
- CD-R physical format should be "ISO 9660"
- If you record MP3/WMA files using the software which cannot create a FILE SYSTEM, for example "Direct-CD" etc., it is impossible to playback MP3 files. We recommend that you use "Easy-CD Creator", which creates an ISO 9660 file system.
- File names should be named using 30 letters or less and must incorporate ".mp3", ".wma" extension e.g. "*****.MP3" or "*****.WMA"
- Do not use special letters such as "/" : * ? " < >" etc.
- Even if the total number of files on the disc has more than 1000, it will only be shown up to 999.

Safety Precaution



CAUTION: TO REDUCE THE RISK OF ELECTRIC SHOCK DO NOT REMOVE COVER (OR BACK) NO USER-SERVICEABLE PARTS INSIDE REFER SERVICING TO QUALIFIED SERVICE PERSONNEL.



This lightning flash with arrowhead symbol within an equilateral triangle is intended to alert the user to the presence of uninsulated dangerous voltage within the product's enclosure that may be of sufficient magnitude to constitute a risk of electric shock to persons.



The exclamation point within an equilateral triangle is intended to alert the user to the presence of important operating and maintenance (servicing) instructions in the literature accompanying the product.

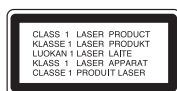
WARNING: TO PREVENT FIRE OR ELECTRIC SHOCK HAZARD, DO NOT EXPOSE THIS PRODUCT TO RAIN OR MOISTURE.

WARNING: Do not install this equipment in a confined space such as a book case or similar unit.

CAUTION: Do not block any ventilation openings. Install in accordance with the manufacturer's instructions.

Slots and openings in the cabinet are provided for ventilation and to ensure reliable operation of the product and to protect it from over heating.

The openings should be never be blocked by placing the product on a bed, sofa, rug or other similar surface. This product should not be placed in a built-in installation such as a bookcase or rack unless proper ventilation is provided or the manufacturer's instruction has been adhered to.



CAUTION:

This product employs a Laser System.

To ensure proper use of this product, please read this owner's manual carefully and retain it for future reference. Should the unit require maintenance, contact an authorized service center. Use of controls, adjustments or the performance of procedures other than those specified herein may result in hazardous radiation exposure.

To prevent direct exposure to laser beam, do not try to open the enclosure. Visible laser radiation when open. DO NOT STARE INTO BEAM.

CAUTION: The apparatus should not be exposed to water (dripping or splashing) and no objects filled with liquids, such as vases, should be placed on the apparatus.

CAUTION concerning the Power Cord

Most appliances recommend they be placed upon a dedicated circuit;

That is, a single outlet circuit which powers only that appliance and has no additional outlets or branch circuits. Check the specification page of this owner's manual to be certain.

Do not overload wall outlets. Overloaded wall outlets, loose or damaged wall outlets, extension cords, frayed power cords, or damaged or cracked wire insulation are dangerous. Any of these conditions could result in electric shock or fire. Periodically examine the cord of your appliance, and if its appearance indicates damage or deterioration, unplug it, discontinue use of the appliance, and have the cord replaced with an exact replacement part by an authorized servicer.

Protect the power cord from physical or mechanical abuse, such as being twisted, kinked, pinched, closed in a door, or walked upon. Pay particular attention to plugs, wall outlets, and the point where the cord exits the appliance.

To disconnect power from the mains, pull out the mains cord plug. When installing the product, ensure that the plug is easily accessible.

Troubleshooting

| Symptom | Cause | Correction |
|--|--|---|
| No power. | <ul style="list-style-type: none"> The power cord is disconnected. | <ul style="list-style-type: none"> Plug the power cord into the wall outlet securely. |
| No sound. | <ul style="list-style-type: none"> The power of the external source equipment is turned off. | <ul style="list-style-type: none"> Switch on the external source equipment. |
| | <ul style="list-style-type: none"> The speaker cable is connected to a wrong position. | <ul style="list-style-type: none"> Set the speaker cable to the correct position, then turn on the unit again by pressing POWER. |
| The unit does not start playback. | <ul style="list-style-type: none"> An unplayable disc is inserted. | <ul style="list-style-type: none"> Insert a playable disc. |
| | <ul style="list-style-type: none"> The disc is placed upside down. | <ul style="list-style-type: none"> Place the disc with the playback side down. |
| | <ul style="list-style-type: none"> The disc is not placed within the guide. The disc is dirty. | <ul style="list-style-type: none"> Place the disc on the disc tray correctly inside the guide. Clean the disc. |
| The remote control does not work properly. | <ul style="list-style-type: none"> The remote control is not pointed at the remote sensor of the unit. | <ul style="list-style-type: none"> Point the remote control at the remote sensor of the unit. |
| | <ul style="list-style-type: none"> The remote control is too far from the unit. | <ul style="list-style-type: none"> Operate the remote control within about 23 ft (7 m). |
| | <ul style="list-style-type: none"> There is an obstacle in the path of the remote control and the unit. | <ul style="list-style-type: none"> Remove the obstacle. |
| | <ul style="list-style-type: none"> The battery in the remote control is exhausted. | <ul style="list-style-type: none"> Replace the battery with new one. |
| Unable to record. | <ul style="list-style-type: none"> Record protect tabs are removed. | <ul style="list-style-type: none"> Cover holes on back edge of tape with tap. |

Specifications

| | |
|-----------------------------|---|
| General | |
| Net Weight | 2.3kg |
| External dimensions (WxHxD) | 146 x 238 x 251 mm |
| Tuner | |
| FM Tuning Range | 87.5 - 108.0 MHz or 65 - 74 MHz, 87.5 - 108.0 MHz |
| AM Tuning Range | 522 - 1620 kHz or 520 - 1720 kHz |
| Amplifier | |
| Output Power | 5 W + 5 W |
| T.H.D | 0.5 % |
| Frequency Response | 60 - 20000 Hz |
| Signal-to-noise ratio | 60 dB |
| CD | |
| Frequency response | 100 - 18000 Hz |
| Signal-to-noise ratio | 55 dB |
| Dynamic range | 50 dB |
| Cassette tape player | |
| F.F/REW Time | 120 sec (C-60) |
| Frequency Response | 250 - 8000 Hz |
| Signal to Noise Ratio | 40 dB |
| Channel Separation | 30 dB (P/B)/30 dB (R/P) |
| Erase Ratio | 50 dB (MTT-5511) |
| Speakers (XCS12F) | |
| Type | 1 Way 1 Speaker |
| Impedance | 4 Ω |
| Frequency Response | 100 - 18000 Hz |
| Sound Pressure Level | 82 dB/W (1m) |
| Rated Input Power | 5 W |
| Max. Input Power | 10 W |
| Net Dimensions (WxHxD) | 144 x 238 x 134 mm |
| Net Weight (1EA) | 1.29 kg |

Designs and specifications are subject to change without notice.



P/NO : MFL38343835