



## **PORTABLE MUSIC PLAYER**

### **OWNER'S MANUAL**

**MODEL: M31**

**Please read this manual carefully before operating  
your set.  
Retain it for future reference.**

**Designs and specifications are subject to change  
without notice for improvement.**





# IMPORTANT SAFETY INSTRUCTIONS



## CAUTION

**RISK OF ELECTRIC SHOCK  
DO NOT OPEN**



**CAUTION: TO REDUCE THE RISK  
OF ELECTRIC SHOCK  
DO NOT REMOVE COVER (OR BACK)  
NO USER-SERVICEABLE PARTS INSIDE  
REFER SERVICING TO QUALIFIED SERVICE  
PERSONNEL.**

## Warning

- To reduce the risk of fire or electric shock, do not expose this appliance to rain or moisture.

## Caution

- The appliance is not intended for use by young children or infirm persons without supervision.
- Young Children should be supervised to ensure that they do not play appliance.
- Use of controls or adjustments or performance of procedures other than those specified herein may result in hazardous radiation exposure.

## Industry Canada requirement

- This Class B digital apparatus complies with Canadian ICES-003.
- Cet appareil numérique de la classe B est conforme qd la norme à NMB-003 du Canada.

## FCC COMPLIANCE STATEMENT



### Note

This equipment has been tested and found to comply with the limits for a Class B digital device, pursuant to Part 15 of FCC Rules. These limits are designed to provide reasonable protection against harmful interference in a residential installation. This equipment generates, uses, and can radiate radio frequency energy and, if not installed and used in accordance with the instructions, may cause harmful interference to radio communications. However, there is no guarantee that interference will not occur in a particular installation. If this equipment does cause harmful interference to radio or television reception, which can be determined by turning the equipment off and on, the user is encouraged to try to correct the interference by one or more of the following measures:

- Reorient or relocate the receiving antenna.
- Increase the separation between the equipment and receiver.
- Connect the equipment into an outlet on a circuit different from that to which the receiver is connected.
- Consult the dealer or an Authorized Service Center for help.

## FCC WARNING

This equipment may generate or use radio frequency energy. Changes or modifications to this equipment may cause harmful interference unless the modifications are expressly approved in the instruction manual.

You could lose the authority to operate this equipment if an unauthorized change or modification is made.

- Changes or modifications not expressly approved by the party responsible for compliance could void the user's authority to operate the equipment.
- This MP3 player is for use only with UL listed personal computers that have installation instructions detailing user installation of card cage accessory.



Tested to Comply  
with FCC Standards

**FOR HOME OR OFFICE USE**

## Disposal of your old appliance



1. When this crossed-out wheeled bin symbol is attached to a product it means the product is covered by the European Directive 2002/96/EC.
2. All electrical and electronic products should be disposed of separately from the municipal waste stream via designated collection facilities appointed by the government or the local authorities.
3. The correct disposal of your old appliance will help prevent potential negative consequences for the environment and human health.
4. For more detailed information about disposal of your old appliance, please contact your city office, waste disposal service or the shop where you purchased the product.
  - The lithium battery contains lithium and can explode if it is not properly handled or disposed of.
  - Replace only with a battery of the type recommended by LG.
  - Caution: Danger of explosion if battery is incorrectly replaced. Replace only the rechargeable lithium battery with Amperex Technology Ltd. or LG, Part No. (GB-S10-422339-0400) having the cell, 422339. Use of Another Cell May Present a Risk of Fire or Explosion.



This product is manufactured to comply with the  
EEC DIRECTIVE 2004/108/EC and 2006/95/EC.



The working life of this product is 7 years  
since the date of purchase.



# IMPORTANT SAFETY INSTRUCTIONS

## CAUTION

**PLEASE READ AND OBSERVE ALL WARNINGS AND INSTRUCTIONS IN THIS OWNER MANUAL AND THOSE MARKED ON THE UNIT. RETAIN THIS BOOKLET FOR FUTURE REFERENCE.**

**This product has been designed and manufactured to assure personal safety. Improper use can result in electric shock or fire hazard. The safeguards incorporated in this unit will protect you if you observe the following procedures for installation, use, and servicing. This unit does not contain any parts that can be repaired by the user.**

**DO NOT REMOVE THE CABINET COVER, OR YOU MAY BE EXPOSED TO DANGEROUS VOLTAGE. REFER SERVICING TO QUALIFIED SERVICE PERSONNEL ONLY.**

1. Read these instructions.
  - All these safety and operating instructions should be read before the product is operated.
2. Keep these instructions.
  - The safety, operating and use instructions should be retained for future reference.
3. Heed all warnings.
  - All warnings on the product and in the operating instructions should be adhered to.
4. Follow all instructions.
  - All operating and use instructions should be followed.
5. Do not use this apparatus near water
  - For example: near a bath tub, wash bowl, kitchen sink, laundry tub, in a wet basement; or near a swimming pool; and like.
6. Clean only with dry cloth.
  - Unplug this product from the wall outlet before cleaning. Do not use liquid cleaners.
7. Do not block any ventilation openings. Install in accordance with the manufacturer's instructions.
  - Slots and openings in the cabinet are provided for ventilation and to ensure reliable operation of the product and to protect it from overheating.
  - The openings should never be blocked by placing the product on a bed, sofa, rug or other similar surface. This product should not be placed in a built-in installation where ventilation is provided or the manufacturer's instructions have been adhered to.
  - Important Safety Instructions

8. Do not install near any heat sources such as radiators, heat registers, stoves, or other apparatus (including amplifiers) that produce heat.
9. Do not defeat the safety purpose of the polarized or grounding-type plug. A polarized plug has two blades with one wider than the other. A grounding type plug has two blades and a third grounding prong. The wide blade or the third prong are provided for your safety.
  - If the provided plug does not fit into your outlet, consult an electrician for replacement of the obsolete outlet.
10. Protect the power cord from being walked on or pinched particularly at plugs, convenience receptacles, and the point where they exit from the apparatus.
11. Only use attachments/accessories specified by the manufacturer.
12. Use only with the cart, stand, tripod, bracket, or table specified by the manufacturer, or sold with apparatus.
  - When a cart is used, use caution when moving the cart/apparatus combination to avoid injury from tip over.



13. Unplug this apparatus during lightning storms or when unused for long periods of time.
14. Refer all servicing to qualified service personnel.

Servicing is required when the apparatus has been damaged in any way, such as power supply cord or plug is damaged, liquid has been spilled or objects have fallen into the apparatus, the apparatus has been exposed to rain or moisture, does not operate normally, or has been dropped.



# Table of Contents

<b>Safety tips</b> .....	5
<b>General information</b> .....	6
Features .....	6
Package contents .....	6
<b>Name of each component</b> .....	7
<b>Installing software</b> .....	8-9
Before installing the operating program .....	8
About LG Media Center .....	8
Installing LG Media Center .....	8-9
Installation of the Adobe Acrobat Reader .....	9
View the manual .....	9
<b>Conncting to the PC</b> .....	10-11
To connect the player to the PC .....	10
To disconnect the player from the PC .....	10
To charge the player .....	11
To download files .....	11
<b>Basic operation</b> .....	12
Turning on/off the power .....	12
Home menu screen .....	12
Lock feature .....	12
Volume control .....	12
Reset feature .....	12
<b>Playing music files</b> .....	13-14
Music playing screen .....	13
Play .....	13
Pause .....	13
Searching a music file .....	13
Skipping to the next or previous music file .....	13
Playing the music files in a folder of the browser .....	14
File error .....	14
<b>FM radio reception (Option)</b> .....	15-16
FM radio reception screen .....	15
Listening to the FM radio .....	15
Setting preset channels .....	15
Deleting a channel .....	16
Setting Preset/Non-Preset Mode .....	16
Scanning the FM radio stations .....	16
Recording screen .....	16
Recording FM radio broadcasting .....	16
Listening to the recorded file .....	16
<b>Playlist function</b> .....	17
Playing a file in playlist .....	17
Adding a file to the playlist .....	17
Deleting a playlist .....	17
<b>Now Playing</b> .....	18
Using Now Playing .....	18
<b>Advanced Setting</b> .....	19-20
Settings menu list .....	19
Operating Setup feature. ....	19
Play mode .....	19
EQ (Sound effect) .....	20
Display Setting .....	20
Radio (Option) .....	20
Recording Quality (Option) .....	20
Time .....	20
General .....	20
<b>Additional information</b> .....	21-22
Running firmware updater .....	21
Running recovery .....	22
Firmware update .....	22
Troubleshooting .....	22
<b>Specifications</b> .....	23-24
Supported file specification .....	24



## Safety tips

Please follow the safety tips closely to reduce the risk of accidents or damage to equipment. Safety instructions are divided into Warning and Caution. Keep this manual in an easily accessible place.



### Warning

Not following the safety tips may result in death or serious injury.



### Warning



Do not use this product while driving.



Do not operate the Player near water, dust, or soot.



Do not use the player when the rain is pouring down and thunderstorms produce lightning.



Listening to the music loud for a long time may compromise your hearing ability.

Do not use earphones while riding bicycles and motor cycles or driving a car.

Check the volume before using headphones. If headphones are used at high volume for more than 30 minutes, it may result in noise induced hearing damage.

Do not use the earphones loud while walking, especially on the crosswalks.

Stop using earphones or lower the volume when you have ringing in your ears.

Careful that headphones or earphones do not slip into the subway doors or automatic doors.



### Caution

Not following the safety tips may result in a light accident or damage.



### Caution



Do not drop an object or give shock on the product.



Do not place the player near a magnet or within the magnetic field.



Clean the Player with soft cloth.



Keep this product away from heat.



Do not insert a metallic object (coins or hair pins, etc.) or flammable objects in the product. Do not drop such objects on the product either.



Do not disassemble, repair, or remodel the product.



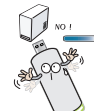
Note that the player may malfunction in an electrostatic environment.



Do not place an object on the product.



Back up important data. (Note that the manufacturer is not responsible for the loss of major data caused by the user's mistake.)



Do not disconnect the USB and turn off the player while the USB is connected. Otherwise, the data may get lost.



## General information

### Features

#### Removable Storage Device

You can easily copy and paste files to the player using Windows Explorer.

#### Built-in Slide USB

You can transfer your data straight to your PC without any adapters or cables. Just push the slide USB switch to reveal a built-in USB connector and plug into the USB port on your computer.

#### Support USB 2.0 full speed

The user can download files at a fast speed with a built-in USB connector.

#### FM reception

(See on the page 23 'Optional by Models')

With auto frequency selection feature, the user can conveniently listen to FM radio broadcasting.

#### Firmware upgrading

You can upgrade your firmware to the newest one.

#### DRM feature

This player supports Portable Device DRM(PDDRM).

The DRM-enabled music file is encrypted so that editing the ID3 tag and lyrics is impossible.



#### Note

What is the DRM? The DRM refers to the technologies and services that prevent unauthorized use of the digital contents and that protect the related parties of the intellectual property rights.

#### Playlist

You can listen to music by selecting a music file you want.

### Package contents



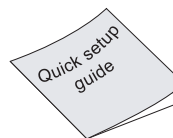
M31



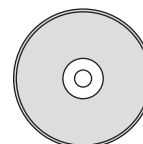
Belt clip



Earphones



Quick setup  
guide

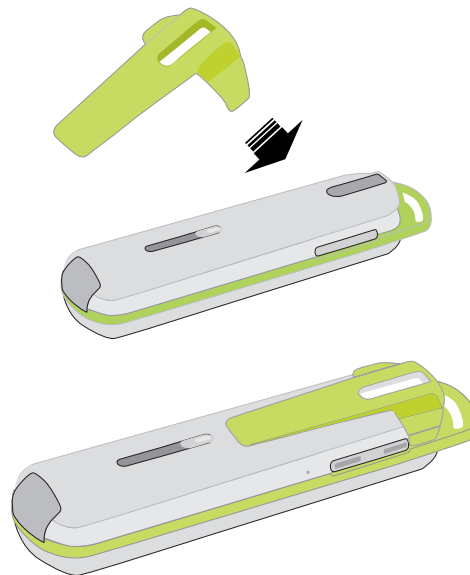


Software CD

- The contents of the product are subject to change without prior notice for functional improvement.

#### How to use the clip

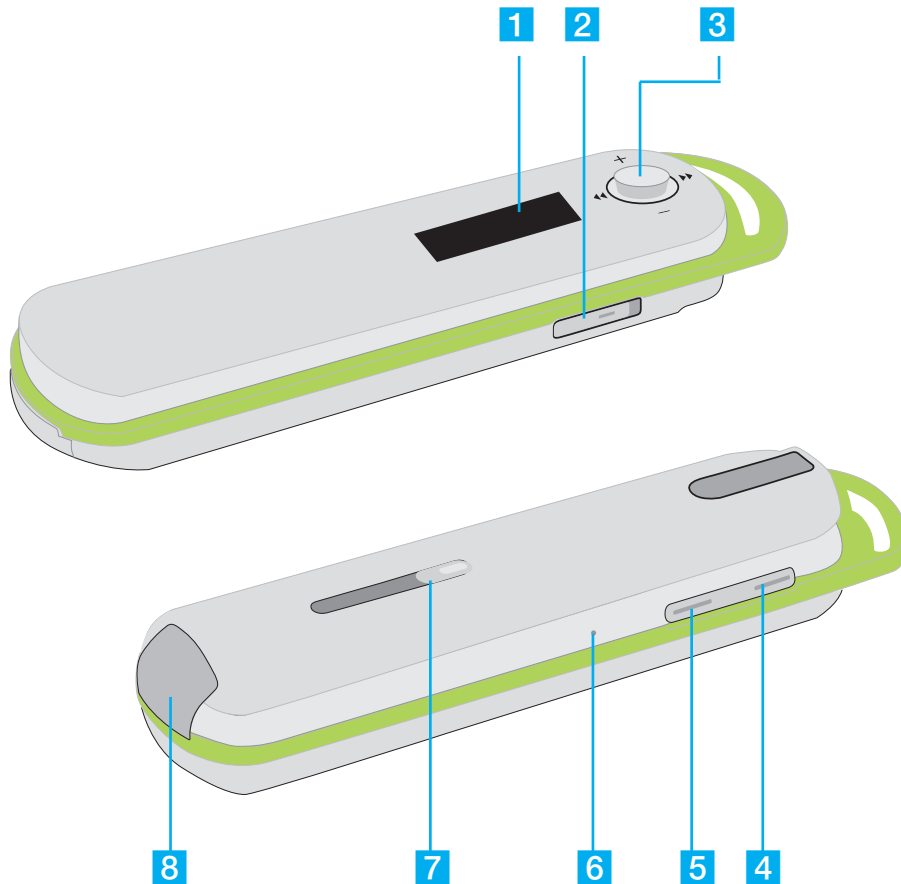
You can attach the clip to the player depending on your taste and need by pressing it to the player as shown below.



The player with the belt clip attached



## Name of each component



1 Display screen

2 Hold switch

3 5-way button

- **OK**: Confirms selected menus
- **+ / -**: Adjusts volume in music/radio mode  
Searches menu lists/files/channels
- **<< / >>**: Operates as REW/FF button

4 • **PLAY/PAUSE (▶||)**

- **REC** (FM Recording)
- **Power On/Off**

5 Menu button

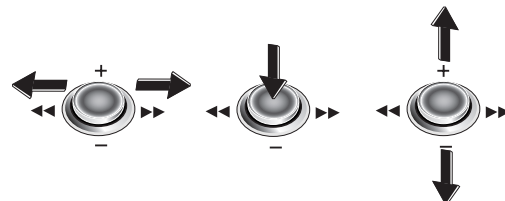
6 RESET hole

7 Slide USB switch

8 USB protection cover

### How to use the 5-way button

You can use the button in 5 directions depending on function.





## Installing software

### Before installing the operating program

**Check the specifications of your PC before using the Player.**

#### Minimum system requirements

- CD-ROM Drive
- Pentium III or higher level CPU / 128MB or larger memory
- 300MB or larger hard disc space, 800 X 600 mode
- Hi-color (16 bit) or higher level video card, Sound card

#### Operating environment

- The MTP mode is applied to the PC equipped with Windows XP (SP1) or higher-version OS or the Windows Media Player 10/11. To the lower-version OS, the MSC mode is applied.

#### Windows Media Player 10/11

- You can download the file using Synchronize with Windows Media Player 10/11 menu.
- For more information, see the Help menu of Windows Media Player 10/11.

#### LG Media Center

- Windows 2000/XP/Vista
- Windows Media Player 10/11/ Internet Explorer 6.0
- Windows Media Player or Internet Explorer will be automatically installed during installation of the LG Media Center. Internet connection must be connected in order to install Internet Explorer.

### About LG Media Center

The LG Media Center program is an integrated data management program developed for users to more conveniently use the MP3 player.

#### Features of the LG Media Center

You can efficiently manage music, video, and photo files through the Media Library rule and download them to the MP3 player.

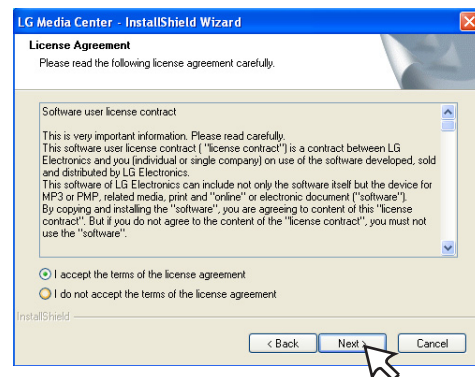
### Installing LG Media Center

1 Insert the operation program CD into the CD-ROM.

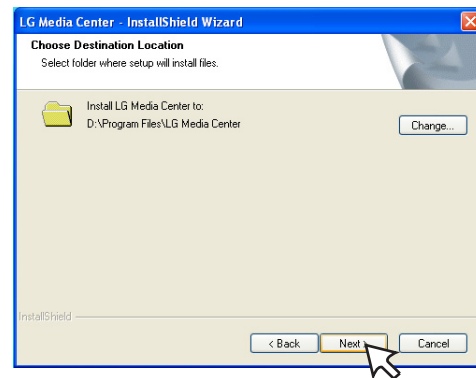
2 Select [LG Media Center].



3 Read the License Agreement. Select the check box and click [Next].



4 Select the installation path and click [Next].

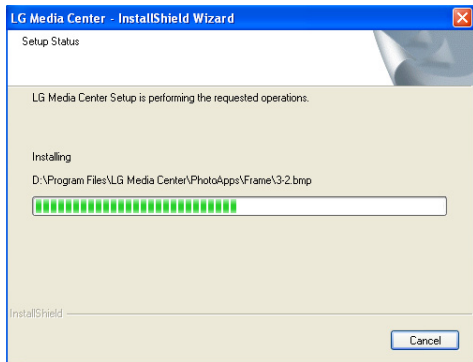
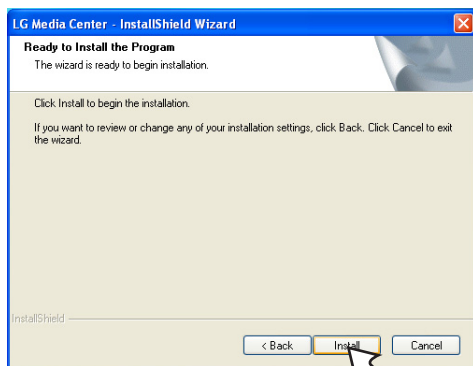




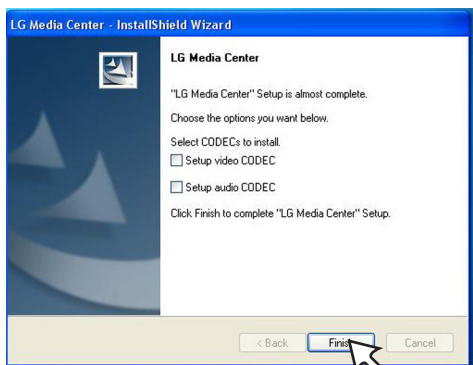


## Installing software

- 5 Click [Install] to start installation.



- 6 After finishing the installation, click [Finish].



- You can install CODEC if it is not installed on PC.

- 7 Click [Start] ⇒ [All Programs] ⇒ [LG Media Center] ⇒ [LG Media Center] to start the program.



### Note

- During installation of the LG Media Center, you can install the Windows Media Player and the Internet Explorer for an operating environment.
- The pop up image may be different depending on the OS of PC.

## Installation of the Adobe Acrobat Reader

- 1 Insert the operation program CD into the CD-ROM.
- 2 Select [Adobe Acrobat Reader].



- 3 Follow the displayed instructions.

## View the manual

- 1 Insert the operation program CD into the CD-ROM.
- 2 Select [Manual].



- 3 You can see the manual.



### Note

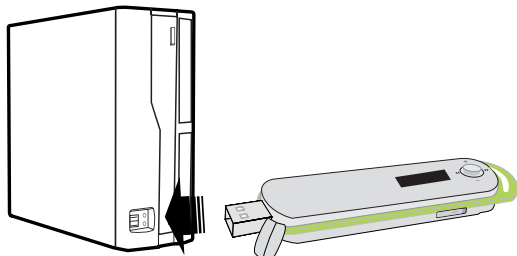
You must install the Adobe Acrobat Reader to read the manual.



## Connecting to the PC

### To connect the player to the PC

- 1 Press and push the slide USB switch to expose USB connector and insert the connector to the USB port of your PC.
  - Check whether the connector is correctly plugged in.




- 2 When the USB connector is connected, the following will be displayed on LCD.
  - The software version is displayed on screen.

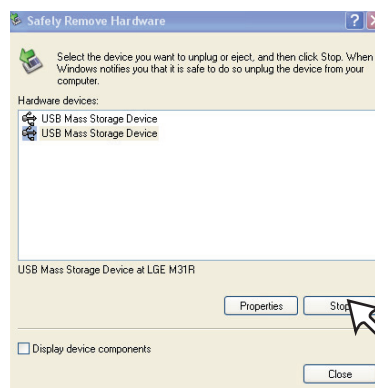


- 3 In case of a correct connection, an icon will be displayed on the task bar of the PC.
  - The icon shapes on the task bar may differ depending on the OS of the PC.

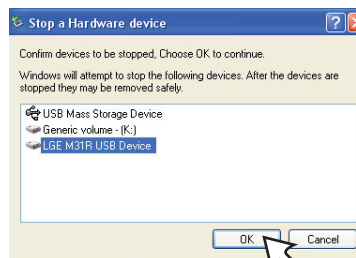
### To disconnect the player from the PC

**This feature is to safely remove MP3 player from the PC after uploading or downloading the files.**

- 1 Double-click on the Remove Hardware  icon on the task bar of the PC.
- 2 Click [Stop] when the window appears.



- 3 Click [OK].



- 4 After a message that the large-capacity USB storage can be safely removed is displayed, remove MP3 player from the PC.
  - If the USB connector is disconnected while the player is connected to the PC to store or delete a file, the data may get lost.



## Connecting to the PC

### To charge the player

**MP3 player will be also automatically charged when connecting the player to the PC.**

- On the display of the player, the charging status will be displayed as follows: (Charging time : More than 4 hours)



- When the player is fully charged, the screen is displayed as shown below.

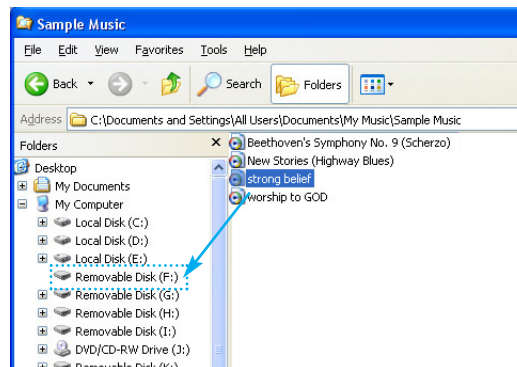


#### Note

- MP3 player may be completely discharged the first time you purchase the product. Charge the battery first.
- Charging time may vary according to PC system requirements or operating environment. If your PC is suspended, MP3 player is not charged.
- Do not charge MP3 player for longer than 12 hours. Overcharge and overdischarge may shorten the battery life.
- Do not charge it when the remaining battery of the notebook is not enough.
- If you transfer files while charging, the charging time will be extended.
- Charge the battery in a place with a normal temperature.

### To download files

- 1 Press and push the slide USB switch to expose the USB connector and insert the connector to the USB port of your PC.
  - Check whether the connector is correctly plugged in.
- 2 Check whether a new drive has been added in the Windows Explorer in the PC.
- 3 Drag the file you want to copy to the removable disk.



#### Note

- The drive section name may differ depending on the OS.
- Disconnecting the USB connector while the file is being copied may cause malfunction of the player.



## Basic operation

### Turning on/off the power

Press ►|| for longer than 2 second to turn on and repeat it to turn off for longer than 3 seconds.



#### Note

Upon rebuilding, it may take time to load.



### Home menu screen

1 Press and hold **MENU** to open the home menu.

2 Press **+** / **-** to select a mode.



3 Press **OK** to display the selected mode.


- The initial screen consists of five modes in total.
- The Home menu appears if **MENU** is pressed for longer than 2 seconds in Play/Pause state.


### Lock feature

**This feature is to lock all feature buttons to prevent a malfunction of the player.**

1 Push the Hold switch in the direction of the  to lock MP3 player.

- The  icon will appear on display window for 2 seconds and disappear.

2 Push the Hold switch in the direction of the  to unlock the player.

- The  icon will appear on display window for 2 seconds and disappear.

### Volume control

Control the volume by moving the Volume control button to the direction of **+** / **-**.

- The volume level can be adjusted by 31 steps. (MIN:00 ~ MAX:30)
- Pressing and holding the button will increase or decrease the volume gradually.
- The factory-default setting for volume level is 15.



#### Note

The volume level is automatically reset to 21 when restarted if your player's volume level has been set to higher than 21 before reset.

### Reset feature

**This feature is to reset the player if the player is not operated normally.**

1 Press the RESET hole with pointed object like a sharp pencil when the player is suspended.



Reset hole

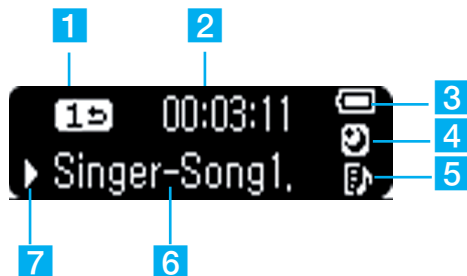
2 After the power is turned off, press and hold ►|| for about two seconds. Then, the power will be turned on.

- Reset function initializes setting values.



## Playing music files

### Music playing screen



- 1 Play Mode
- 2 Playback Time
- 3 Battery Status
- 4 Sleep Mode
- 5 Playlist Display
- 6 Music File Title
- 7 Play/Pause/Rec

### Play

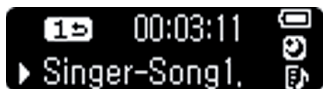
- 1 Press and hold **MENU** to open home menu.
- 2 Press **+** / **-** to select the Music mode.




- 3 Press **OK** briefly to open the Music browser.

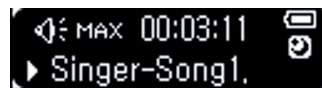


- 4 Press **▶||** or **OK** to play the music files.  
The Play **▶** icon and the playback time appear and the information is sliding.

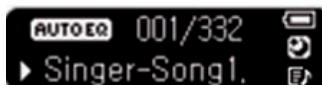
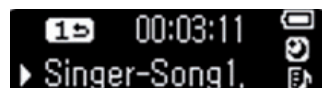


#### Note

- When you press **+** / **-**, the volume icon  will appear on the display window instead of the play mode icon and disappear after 3 seconds.



- To check EQ information and the total number of songs in play/pause state, press **OK** briefly. The play mode and playback time will be displayed again after 3 seconds.



### Pause

- 1 Press **▶||** once to pause while playing.  
- Even in pause state, song information can be displayed.
- 2 Press **▶||** again to resume playing.

### Searching a music file

- 1 Press **◀◀** for longer than 2 seconds, and you can jump to the former part of the currently playing music file during playback.
- 2 Press **▶▶** for longer than 2 seconds, and you can jump to the latter part of the currently playing music file during playback.
- 3 If you skip to the beginning/end of the current file with **◀◀/▶▶**, the previous or next file will be played.

### Skipping to the next or previous music file

- 1 In play/pause state, press **▶▶** briefly to skip to the next music file.
- 2 In play/pause state, press **◀◀**, the music will go back to the previous music file if the music is playing within 5 seconds; and the music will restart playing if the music is playing after 5 seconds.

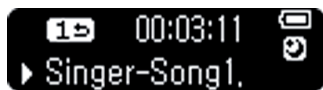


## Playing music files

### Playing the music files in a folder of the browser

The user can easily search or play files using the browser.

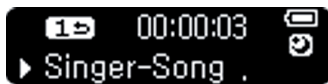
- 1 In play/pause mode, press **MENU** briefly, and the browser screen will appear.



#### Note

- Press ◀, it will move to the higher folder.
- When you are in the highest folder and press ◀, the currently playing or the previously played song file will be displayed.
- Press ▶, it will move to the lower folder.

- 2 Go to the item using + / - in the browser and press **OK** or ▶/||. The selected music file will be playing.



- 3 Press **MENU** for longer than 2 seconds to go to the Home menu.

#### Note

- **Maximum number of files to play**
  - You can play up to 1800 files.
- **Maximum number of folders to be create**
  - You can create up to 100 folders.
- When the files or folders exceed the above limit, the files or folders exceeding the limit doesn't appear in the list.

### File error

When you select a file which cannot be played, the following message will be displayed.

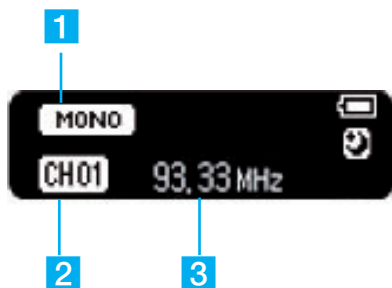




## FM radio reception (Option)

The images inserted in the FM radio reception section are just examples to help you understand this function more easily.

### FM radio reception screen



- 1 Stereo/Mono icon
- 2 Channel display (only in Preset mode)
- 3 FM radio frequency display

### Listening to the FM radio


- 1 Press **MENU** to select Radio mode.



- 2 Press **OK** to display the FM radio reception screen.




#### Note

When you press **+ / -**, the volume icon  will appear on the display window instead of the Mono/Stereo icon and disappear after 3 seconds.

### Setting Preset Channels

#### Automatic channel setting

- 1 Press **OK** for longer than 2 seconds to scan and store radio channels in Non-Preset mode.
  - The  icon will appear and the channels will be stored.



#### Note

- While scanning from lower to upper frequencies, the unit will store 20 channels and all of the previously preset channels will be deleted.
- In an area with weak reception, the detected channels may be less than 20.
- While scanning frequencies, the player will not be powered off and you can not hear any sound.

- 2 Press **◀** to stop automatic search.

#### Manual channel setting

- 1 In a Non-Preset mode, select a frequency to store as a preset channel by using **◀/▶** and press **MENU** briefly.
- 2 When a browser screen appears, select a channel with **+ / -** and press **OK** briefly.



- 3 When a message "Save as a CH" appears, select "Yes" and press **OK** briefly.



- 4 Stored channels can be scanned in a browser screen.





## FM radio reception (Option)

### Deleting a channel

- 1 While listening to the radio, press **MENU** briefly to delete the currently preset channel.
  - To operate this function, you must press **OK** in Preset mode.
- 2 When a message “Delete this CH” appears, select “Yes” by using ◀▶ and press **OK** briefly.



- When a channel is deleted, we can still receive other preset channels. When no preset channel is left, the **NoCH** icon appears and then disappears.

### Setting Preset/Non-Preset Mode

#### Setting Preset Mode

- 1 Press **OK** briefly while listening to the radio.
- 2 Preset mode is set and the **CH** icon appears.



#### Tip

Preset mode: When the existing radio channels are already set, it is called 'Preset mode'.

#### Setting Non-Preset Mode

- 1 Press **OK** briefly once again.
- 2 Non-Preset mode is set and the **CH** icon disappears.



#### Tip

Non-Preset mode: When the existing radio channels are not already set, it is called 'Non-preset mode'.

### Scanning the FM radio stations

#### Auto Scan

In Non-Preset mode, press ◀▶ for longer than 2 seconds, and you can find available radio stations automatically.

#### Manual Scan

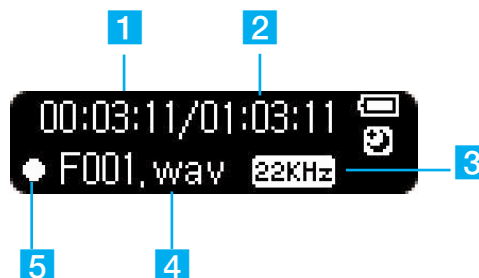
- 1 In Non-Preset mode, press ◀▶, and the frequency decreases/increases.
- 2 In present mode, press ◀▶ button, and you can listen to the previous/next preset station.



#### Note

- Reception may be weak in some areas.
- Earphones function as an antenna. Earphones made by other manufacturers do not guarantee optimal performance.
- While scanning frequencies, the unit will not be powered off and you can not hear any sound.

### Recording screen



- 1 Elapsed Time
- 2 Remaining Time
- 3 Bit Rate
- 4 Recording file name
- 5 Recording Mark

### Recording FM radio broadcasting

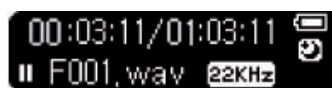
- 1 Press ▶/|| briefly to start recording while listening to the radio.



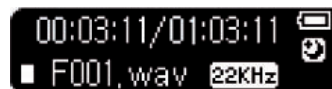
#### Note

If the memory is not enough to record, “Memory full not record” will appear. In this case, delete the files and secure the memory space.

- 2 Press ▶/|| to pause recording.



- 3 By pressing ▶/|| again, the user can resume recording.
- 4 Press **MENU** briefly to end recording.
  - Files will be stored in FM folder in a format 'F001.WAV'.



### Listening to the recorded file

- 1 Press and hold **MENU** to select the music mode.
- 2 Press **OK** to enter the submenu.
- 3 Press + / - to select [FM] and **OK** to confirm.
- 4 Choose a recorded file you want to hear by using + / - and press **OK** or ▶/|| briefly.





## Playlist Function

### Playing a file in playlist


- 1 In Home Menu, press + / - to select the Playlist mode.

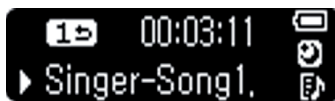


- 2 Press **OK** briefly to display the playlist browser.



- 3 Select a music file you want to hear in playlist browser by using + / - and press **OK** or ►/|| briefly, and then the file is played.


- Music files in Playlist are displayed with the  icon.



### Adding a file to the playlist

- 1 In play/pause state, press **MENU** briefly to enter the Music browser.

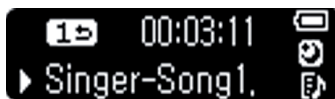


- 2 Press + / - to select the desired file.
- 3 Press **OK** for longer than 2 seconds to add the file to the playlist.  
-The Icon of the file added will be changed like .



#### Note

- When you press **OK** for longer than 2 seconds during playback, the music file is added to the playlist.



- When the files or folders exceed the limit, the "Playlist is Full !" message will be displayed.



- You can create up to 100 lists.

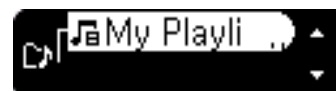
### Deleting a playlist

#### In Playlist Browser

- 1 Select the Playlist Browser and a file you want to delete.



- 2 Press **OK** for longer than 2 seconds in Playlist mode, then the selected file is deleted.



#### In Music Browser

- 1 Press **OK** for longer than 2 seconds in Music browser.

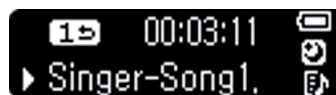


- 2 The file is deleted in Music browser.

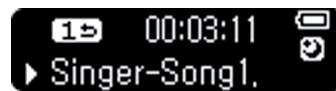


#### In Playback

- 1 Press **OK** for longer than 2 seconds during playback.



- 2 The file is deleted in the playlist.



#### Note

When no song remains in Playlist mode, playback stops and the message "No Song" is displayed.



## Now Playing

### Using Now Playing

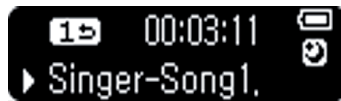
With Now Playing function, you can check and play the currently playing music file in Home menu or the last played music file even after entering other modes or restarting the player.

#### In Home menu

- 1 Press **MENU** to select Now Playing mode and press **OK** or **▶/||** briefly.



- 2 Then, a currently playing or last played music file will be played.



#### In Music mode

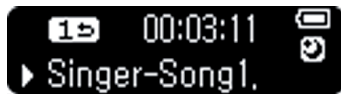
- 1 Press **MENU** to select Music mode and press **OK**.



- 2 Then, you will enter the browser.



- 3 Press **◀** briefly, a currently playing or last played music file will be played.



#### In Playlist browser

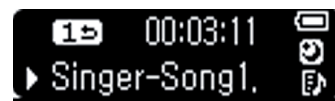
- 1 Press **MENU** to select the Playlist mode and press **OK**.



- 2 Then, you will enter the playlist browser.



- 3 Press **◀** briefly, a currently playing or last played music file will be played.





## Advanced setting

### Settings menu list

Play Mode	EQ	Display Setting	Radio	Recording Quality	Time	General
Repeat One	AUTO EQ	ID3 Tag	Stereo/Mono	16KHz	Sleep Reservation	Fade In
Play Folder	FLAT	Brightness	Region Setting	22.05KHz	Auto Power off	Restore Factory Setting
Repeat Folder	XTS-PRO	Auto Display Off		32KHz		System Info
Random Folder	ROCK	Language				
Random Repeat Folder	POP					
Play All	JAZZ					
Repeat All	CLASSICAL					
Random All	DANCE					
Random Repeat All	HIPHOP/RAP					
	R&B/SOUL					
	LIVE					

### Operating Setup feature

1 Press **MENU** to open the home menu.

2 Press **+** / **-** to select the Settings mode.



3 Press **OK** briefly to display settings sub menus.

- Press **◀/▶** to navigate between the menus.



- Press **MENU** or **◀** briefly to go to the upper menu without setting the feature in the sub menu.

- Press **MENU** for longer than 2 seconds to go to the Home menu.

### Play Mode

You can select the play mode you want.

GUI feature	Description
Play All	Plays all songs
Play Folder	
Repeat All	Repeats all songs
Repeat Folder	
Repeat One	Repeats one song
Random Repeat All	Randomly repeats all songs
Random Repeat Folder	
Random All	Randomly Plays all songs
Random Folder	



## Additional information

### EQ (Sound effect)

**EQ: The user can set the sound effect.**

AUTO EQ, FLAT, XTS-PRO, ROCK, POP, JAZZ, CLASSICAL, DANCE, HIP HOP/RAP, R&B/SOUL, LIVE

- FLAT : Basic sound quality with no sound effect.
- XTS-PRO : XTS -PRO embodies the best of the sound quality after analysing the features of LG earphone which is supplied with bundle and you can enjoy with the best sound quality that is suited for the supplied earphone
- ROCK : Strong but smooth sound.
- POP : Realistic sound with enhanced mid-range frequency.
- JAZZ : Sweet and feeble sound.
- CLASSICAL : Detailed sound with enhanced midrange frequency.
- DANCE : well-balanced sound between high and low frequencies
- HIP HOP/RAP : Sound with enhanced low and high frequency
- R&B/SOUL : Detailed sound with enhanced high frequency
- LIVE : Realistic sound with enhanced mid-range and high frequency

### Display Setting

**ID3 Tag: Displays information of the music file.**

- The user can select [On] or [Off].
- In case the user selects [On], the artist and the title of the ID3 Tag will be displayed.

**Brightness: The user can select the brightness of the lighting.**

- The user can set between 0 and 9.

**Auto Display Off: The user can set the lighting time.**

- The user can select 5 sec, 10 sec, 30 sec, 1 min, or On.

**Language: The user can set the language.**

- English, Português, Русский, Dansk, Deutsch, Nederlands, Français, Magyar, Italiano, Norsk, Polski, Español, Svenska, Українська, 中文 (繁體), Suomi, Ελληνικά, İngilizce.

- Select **Home Menu** ➔ **Settings** ➔ **Display Setting** ➔ **Language** to change the language setting.

### Radio (Option)

**Stereo/Mono : The user can set the Mode.**

- The user can select [Stereo] or [Mono].

**Region Setting : The user can set the area.**

- The user can select [Japan] or [Others].

### Recording Quality(Optional)

**Recording Quality: The user can set the quality of the recorded file.**

- The user can set 16KHz, 22.05KHz, or 32KHz.

### Time

**Sleep Reservation: When the defined time passes, the player will be automatically turned off.**

- The user can select Off, 10 min, 30 min, 60 min, or 120 min.

#### Note

- If the user sets the sleep reservation, the player will automatically store files and be turned off at the reserved time.
- After the player is turned off at the reserved time, the sleep reservation will be automatically cancelled.

**Auto Power Off: The player will be automatically turned off when the user does not use the function for a certain time while the player is not playing or recording a file.**

- The user can select Off, 30 sec, 1 min, 5 min, or 10 min.

#### Note

The Auto Power Off feature does not function in the radio mode.

### General

**Fade In: The user can gradually increase the volume to protect ears.**

- The user can select [On] or [Off].

**Restore Factory Setting: The user can initialize the setting of the player.**

- When the message “**Are you sure**” appears, the user can select “**Yes**” or “**No**” and press **OK** briefly.

**System Info : The user can check the product information.**

- The firmware version, the free memory space, and the total memory capacity are displayed.



## Additional information

### Running Firmware updater

The user can update the firmware for addition and change of features of the player and for functional improvement.

- 1 Download the firmware updater from CD.
  - In case you activate the program on CD, the compressed program will automatically be decompressed into the folder C:\LGE\M31R/E.
- 2 Connect the MP3 player to the USB port on your computer.



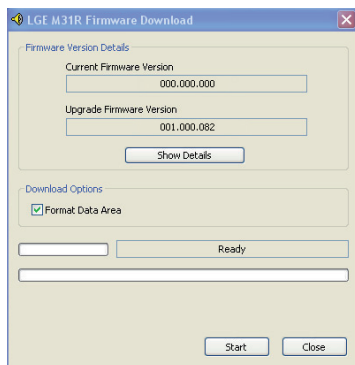
#### Note

Make sure your connection is solid while updating. It may result in the data loss or damage to the player.

- 3 Move to the folder C:\LGE\M31R/E and run the firmware updater.
- 4 When the LGE MP3 Firmware download window appears, check the current firmware version.

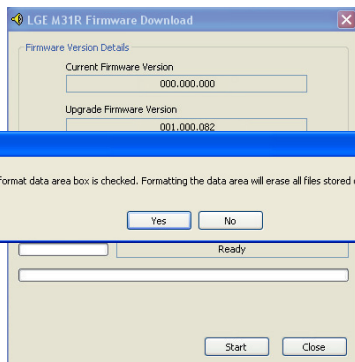
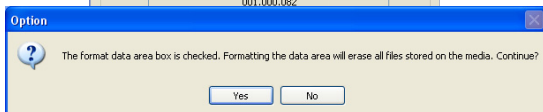
Do not check "Format Data Area" not to do format.

Click [Start] to run the firmware updater.

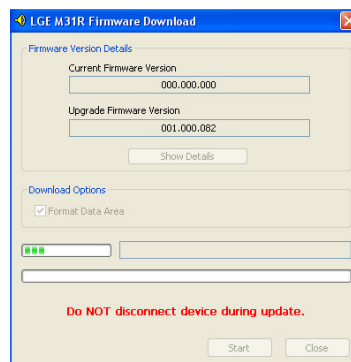


#### Note

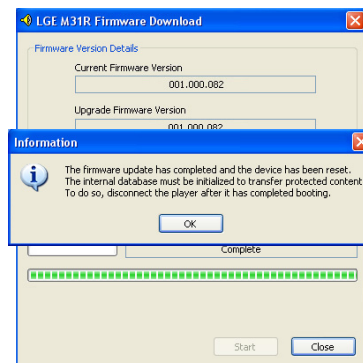
- We recommend the "Format Data Area".
  - Back up your data before executing this option. Otherwise, all files will be deleted from the player.
  - Do not disconnect the USB connector from the pc during update, or the unit will not operate.
- 5 When you format the data, the message shown below appears on display window . Click [Yes] to continue the firmware update.



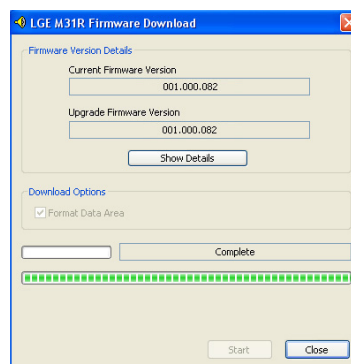
- 6 Update starting.



- 7 The message shown below appears on display window . Click [OK].



- 8 Check the updated firmware version on the display window.
- 9 Click [Close] to finish the program. Remove the USB connector by safely removing hardware.





## Additional information

### Running recovery

**Running a recovery will result in a total loss of data. Always make sure to back up important data. We do not take any responsibilities for data loss.**

- The PC does not recognize the player properly.
- Text appears broken and somewhat unreadable on the screen.
- The player does not work.
- You cannot download or upload files.

- 1 Activate the updater.
- 2 When a screen appears, connect the player to the USB port of the PC while pressing ►/||.
- 3 Release ►/|| when the player is recognized properly as seen in the progress bar completion status.
- 4 When the LGE MP3 Firmware download window appears, check the current firmware version.  
You should not check "Format Data Area" in order not to do format.  
Click [Start] to run the firmware updater.



#### Note

- We recommend the "Format Data Area".
- Back up your data before executing this option.  
Otherwise, all files will be deleted from the player.

- 5 Repeat the steps from 5 to 9 (page 21).

### Firmware update

**Connect the player to the PC where the LG Media Center is installed to download a new version of firmware.**



#### Note

Functions only in the Internet-connected PC.

- 1 Connect the USB connector to the USB port of the PC with the LG Media Center installed.
- 2 Check whether a new drive has been added in the Windows Explorer in the PC.
- 3 The LG Media Center will compare the firmware versions of the player and the server. If it detects a new firmware version, it asks the user whether to update the version.  
Check [Now] and click [OK].
- 4 Press [OK] to download the latest firmware updater.
- 5 Select the installation path and click [OK].
- 6 Activate the updater.
- 7 Repeat the steps from 4 to 9 (page 21).
- 8 When the update finishes, remove the USB connector by safely removing hardware.
- 9 Turn on the player and check the updated version of firmware.

### Troubleshooting

#### Q : The player is not turned on.

A : Check whether the battery is remaining.

#### Q : The screen blurs.

A : Avoid direct sun rays and adjust the brightness.

A : Check the LCD brightness.

#### Q : The button does not function.

A : Check whether the Hold function is active.

#### Q : The noise is severe during listening to the radio and the reception is poor.

A : As the earphones function as an antenna, make sure it has any damage.

A : Change the directions of the player and the earphones gradually.

#### Q : After the firmware is updated, the player is not normally functioning.

A : Back up the data and format the player.

#### Q : Sometimes files get downloaded but sometimes they don't.

A : Make sure the USB port is operational.

#### Q : Downloaded files or folders does not appear.

A : The maximum number of files or folders this player can play are 1800 and 100 respectively. The files or folders exceeding the limit don't appear in the list. Delete some music files or folders to see the files which are not previously listed.

#### Q : An error occurs during FW download and FW update of LG Media Center, and MP3 player does not work after finishing the operation of FW download and FW update of LG Media Center.

A : Connect the player to the USB port of the PC and run FW download program.  
Please refer to the page 22 about the Recovery.



## Specifications

Type	Item	Specifications
Memory	Capacity	1GB/ 2GB
	File system	FAT/ FAT32
PC	OS for MP3 Player Device	Win2000/XP/Vista
	Interface	USB 2.0
General specifications	Dimensions	103 (W) X 30 (H) X 17 (D) (mm) without clip
	Weight	33g (with battery) / Depends on the product model.
	Operating temperature	-5°C + 45°C
Audio	Frequency range	20Hz ~ 20kHz
	Signal-to-noise ratio	85dB
	Channel separation	33dB (1kHz)
	Maximum output	7.5mW+7.5mW
FM radio (Optional)	Frequency range	76.0~108MHz
	Signal-to-noise ratio	38dB
	Stereo separation	25dB(1kHz)
	Antenna	Earphones antenna
Playback time	Audio	About 13 hours (for 128Kbps/44.1KHz EQ Flat, Vol 15)
Power supply	Battery (Built-in)	Li-Polymer DC 3.7V 320mAh Rechargeable Battery
Files	Audio	MP3, WMA, WAV
Display	Display	OLED

### Optional by Models

Type	Memory	Model Name
With FM	1GB	M31REE1K/G/R/S
	2GB	M31REE2K/G/R/S
Without FM	1GB	M31EEE1K/G/R/S
	2GB	M31EEE2K/G/R/S

#### Note

Some parts of the storage space of the MP3 player are usually used for storing the information that is internally treated. Therefore, the storage capacity that can be actually used may be somewhat smaller than specified in the manual. (The size of the storage space for the internally treated information can be changed for product upgrade without any notice to the end users.)

<http://www.lge.com>

Information related to the product is available at this site.

- By updating the firmware, you can improve the performance of the product.



# Specifications

## Supported file specification

### MP3 Decoder

- Support MP3 decoding including Variable Bit Rate(VBR)
- O : Support both Stereo and Mono
- O(s) : Only Stereo
- O(m) : Only Mono

MP3 Decoder

kbps/kHz	MPEG 1 layer 3			MPEG2 layer3			MPEG2.5		
	44.1	48	32	22.05	24	16	11.025	12	8
8				O	O	O	O	O	O
16				O	O	O	O	O	O
24				O	O	O	O	O	O
32	O	O	O	O	O	O	O	O	O
40	O	O	O	O	O	O	O	O	O
48	O	O	O	O	O	O	O	O	O
56	O	O	O	O	O	O	O	O	O
64	O	O	O	O	O	O	O	O	O
80	O	O	O	O	O	O			
96	O	O	O	O	O	O			
112	O	O	O	O	O	O			
128	O	O	O	O	O	O			
144				O	O	O			
160	O	O	O	O	O	O			
192									
224	O	O	O						
256	O	O	O						
320	O	O	O						

kb/s / kHz	MPEG1 layer1			MPEG1 layer2		
	44,1	48	32	44,1	48	32
32				O	O	O
36	O	O	O			
48				O	O	O
56				O	O	O
64	O	O	O	O	O	O
80				O	O	O
96	O	O	O			
112				O	O	O
128	O	O	O	O	O	O
160	O	O	O	O	O	O
192	O	O	O	O	O	O
224	O	O	O	O	O	O
256	O	O	O	O	O	O
288	O	O	O			
320	O	O	O	O	O	O
352	O	O	O			
384	O	O	O	O	O	O
416	O	O	O			
448	O	O	O			

kbps/kHz	MPEG2 layer1			MPEG2 layer2		
	16	22.5	24	16	22.5	24
8				O	O	O
16				O	O	O
32	O	O	O	O	O	O
40				O	O	O
48	O	O	O	O	O	O
56	O	O	O	O	O	O
64	O	O	O	O	O	O
80	O	O	O	O	O	O
96	O	O	O	O	O	O
112	O	O	O	O	O	O
128	O	O	O	O	O	O
144	O	O	O	O	O	O
160	O	O	O	O	O	O
176	O	O	O			
192	O	O	O			
224	O	O	O			
256	O	O	O			

### WMA Decoder

- Ver 4x, 7, 8 (o) Ver 9 (●) (ASF not supported)

WMA DECODER

kb/s / kHz	48	44,1	32	22,05	16	11,025	8
320		●(s)					
256		●(s)					
192	●(s),O(s)	●(s),O(s)					
160	●(s),O(s)	●(s),O(s)					
128	●(s),O(s)	●(s),O					
96	●(s)	●(s),O(s)					
80	●(s)	●(s),O(s)	O(s)				
64	●(s)	●(s),O	O(s)				
48		O	●(s)				
44			O(s)				
40			O(s)				
36			O(s)				
32		O	O	●(s)			
22			O(s)	O(s)			
20			O(m)	O	O(s)		
16				O(m)	O		
12					O(m)		O(s)
10					O(m)	O(m)	
8						O(m)	O(m)
6							O(m)
5							O(m)

### WAV Encoder(ADPCM)

- 16KHz, 22.05KHz, 32KHz Spec

### WAV Decoder

WAV DECODER

MS-ADPCM						
kbps/kHz	48	44.1	32	22.05	16	11.025
4	O	O	O	O	O	O
IMA-ADPCM						
4	O	O	O	O	O	O
PCM						
4	O	O	O	O	O	O
16	O (m)	O	O	O	O	O
24	O (m)	O (m)	O (m)	O (m)	O (m)	O (m)



