



ENGLISH

DEUTSCH

FRANÇAIS

NEDERLANDS

SLOVENŠČINA

ITALIANO

ESPAÑOL

EMAHNIKA

PORTUGUÊS

OWNER'S MANUAL

5.1ch SURROUND COM- PACT RECEIVER SYSTEM

Please read this manual carefully before operating your set and retain it for future reference.

SR906SB (SR906SB, SH96SB-F/S/C, SH95TA-W)

P/NO : MFL63267061

Safety Information

1
Getting Started



CAUTION: TO REDUCE THE RISK OF ELECTRIC SHOCK DO NOT REMOVE COVER (OR BACK) NO USER-SERVICEABLE PARTS INSIDE REFER SERVICING TO QUALIFIED SERVICE PERSONNEL.



This lightning flash with arrowhead symbol within an equilateral triangle is intended to alert the user to the presence of uninsulated dangerous voltage within the product's enclosure that may be of sufficient magnitude to constitute a risk of electric shock to persons.



The exclamation point within an equilateral triangle is intended to alert the user to the presence of important operating and maintenance (servicing) instructions in the literature accompanying the product.

WARNING: TO PREVENT FIRE OR ELECTRIC SHOCK HAZARD, DO NOT EXPOSE THIS PRODUCT TO RAIN OR MOISTURE.

WARNING: Do not install this equipment in a confined space such as a book case or similar unit.

CAUTION: Do not block any ventilation openings. Install in accordance with the manufacturer's instructions.

Slots and openings in the cabinet are provided for ventilation and to ensure reliable operation of the product and to protect it from over heating. The openings shall be never be blocked by placing the product on a bed, sofa, rug or other similar surface. This product shall not be placed in a built-in installation such as a bookcase or rack unless proper ventilation is provided or the manufacturer's instruction has been adhered to.

CAUTION concerning the Power Cord

Most appliances recommend they be placed upon a dedicated circuit;

That is, a single outlet circuit which powers only that appliance and has no additional outlets or branch circuits. Check the specification page of this owner's manual to be certain. Do not overload wall outlets. Overloaded wall outlets, loose or damaged wall outlets, extension cords, frayed power cords, or damaged or cracked wire insulation are dangerous. Any of these conditions could result in electric shock or fire. Periodically examine the cord of your appliance, and if its appearance indicates damage or deterioration, unplug it, discontinue use of the appliance, and have the cord replaced with an exact replacement part by an authorized service center. Protect the power cord from physical or mechanical abuse, such as being twisted, kinked, pinched, closed in a door, or walked upon. Pay particular attention to plugs, wall outlets, and the point where the cord exits the appliance. To disconnect power from the mains, pull out the mains cord plug. When installing the product, ensure that the plug is easily accessible.

This device is equipped with a portable battery or accumulator.

Safety way to remove the battery or the battery from the equipment: Remove the old battery or battery pack, follow the steps in reverse order than the assembly. To prevent contamination of the environment and bring on possible threat to human and animal health, the old battery or the battery put it in the appropriate container at designated collection points. Do not dispose of batteries or battery together with other waste. It is recommended that you use local, free reimbursement systems batteries and accumulators. The battery shall not be exposed to excessive heat such as sunshine, fire or the like.

CAUTION: The apparatus shall not be exposed to water (dripping or splashing) and no objects filled with liquids, such as vases, shall be placed on the apparatus.

Disposal of your old appliance

1. When this crossed-out wheeled bin symbol is attached to a product, it means the product is covered by the European Directive 2002/96/EC.
2. All electrical and electronic products should be disposed of separately from the municipal waste stream via designated collection facilities appointed by the government or the local authorities.
3. The correct disposal of your old appliance will help prevent potential negative consequences for the environment and human health.
4. For more detailed information about disposal of your old appliance, please contact your city office, waste disposal service or the shop where you purchased the product.

CE LG Electronics hereby declares that this/ these product(s) is/are in compliance with the essential requirements and other relevant provisions of Directive 2004/108/EC, 2006/95/EC and 2009/125/EC.

European representative : LG Electronics Service Europe B.V. Veluwezoom 15, 1327 AE Almere, The Netherlands (Tel : +31-(0)36-547-8888)

Table of Contents

1 Getting Started

- 2 Safety Information
- 6 Introduction
 - 6 – Supplied Accessories
 - 6 – Required cables
- 7 Remote control
 - 7 – Battery Installation
 - 7 – About the remote control modes
 - 7 – To control the RECEIVER
 - 9 – To control the PLAYER (Blu-ray disc player, DVD player, DVD recorder, etc.)
 - 9 – To control the TV
- 10 Front panel
- 11 Rear panel

2 Connecting

- 12 Positioning the system
- 13 Speaker Connection
 - 13 – Attaching the speakers to the receiver
- 14 Connecting to Your TV
- 14 Connecting components with HDMI jack
 - 16 – What is SIMPLINK?
 - 16 – ARC (Audio Return Channel) function
- 16 Connecting components with digital audio jacks
 - 16 – Optical digital audio connection
 - 17 – Coaxial digital audio connection
- 17 Connecting component with analog audio jacks
- 17 Connecting the portable device
- 18 Connecting the antennas
- 18 Connecting the optimizer microphone
- 18 Connecting the USB device
- 18 Connecting the iPod

3 System Setting

- 19 Calibrating the appropriate settings automatically (Auto Sound Calibration)
 - 19 – Before performing Auto Sound Calibration
 - 19 – Performing Auto Sound Calibration
 - 20 – Turning the Auto Sound Calibration on/off
- 21 Settings and adjustments using the SETUP menu
 - 21 – SETUP configuration
 - 21 – TESTTONE menu
 - 22 – LEVEL menu
 - 22 – DISTANCE menu
 - 22 – A/V SYNC menu (Adjusting the audio delay)
 - 23 – DRC menu
 - 23 – SET HDMI menu (HDMI Standby Pass Trough)
 - 23 – AUTO CAL menu
 - 23 – RESET menu

4 Operating

- 24 Selecting the input source
- 24 Enjoying sound/images from the components connected to the receiver
 - 24 – Enjoying Blu-ray Disc/DVD
- 25 – Enjoying a satellite tuner or set top box
 - 25 – Enjoying TV
 - 25 – Enjoying a game console, etc
 - 26 – Enjoying a CD player, etc
 - 26 – Enjoying a VCR, etc
 - 26 – Enjoying a portable device (MP3 player, etc.)
 - 26 – Enjoying the USB or iPod connected to the IPod/USB Port
- 27 Adjusting the speaker levels
- 27 Enjoying various sound mode
- 28 Listening to FM radio
 - 28 – Automatic tuning
 - 28 – Manual tuning
 - 28 – Improving poor FM reception
 - 28 – Presetting radio stations
 - 28 – Tuning to preset stations
 - 29 – Deleting the preset stations
 - 29 – Deleting all the preset stations
 - 29 – Seeing information about a radio station
- 30 Playing back components with one-touch operation (One-Touch Play)
- 30 Enjoying the TV sound from the speakers connected to the receiver (System Audio Control)
- 31 Turning off the receiver with the TV (System Power Off)
- 31 Enjoying the TV sound via an HDMI connection (Audio Return Channel)
- 31 Adjusting the audio delay
- 31 DOLBY DRC (Dynamic Range Control)
- 32 Using the Sleep Timer
- 32 Displaying the file information
- 33 Playing music files using the USB device
 - 33 – Basic Operation
 - 33 – Playing repeatedly or randomly
 - 33 – Music file requirement
 - 33 – USB device requirement
- 34 Playing the iPod

- 35 Controlling a TV with the Supplied Remote Control
 - 35 – Setting up the remote to control your TV

5 Troubleshooting

- 36 Troubleshooting

6 Appendix

- 38 Manufacturer code list
- 44 Trademarks and Licenses
- 45 Specifications
- 47 Maintenance
 - 47 – Handling the Unit

1

2

3

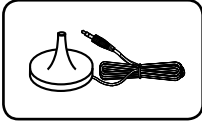
4

5

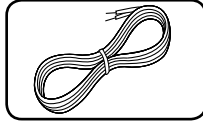
6

Introduction

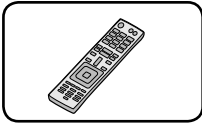
Supplied Accessories



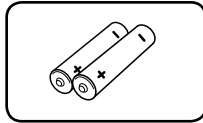
Optimizer microphone
(1)



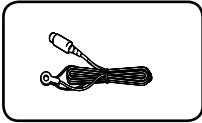
Speaker cables (6)



Remote control (1)



Batteries (2)



FM antenna (1)

Required cables

The hookup diagrams on the subsequent pages assume the use of the following connection cables.

You must purchase the connection cables separately if necessary.

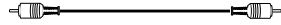
- HDMI cable (Type A, High speed HDMI™ cable or Type A, High speed HDMI™ cable with Ethernet)



- Optical digital audio cable



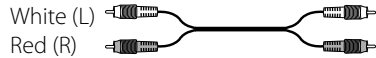
- Coaxial digital audio cable



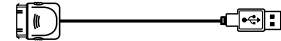
- Portable cable



- Analog audio cable



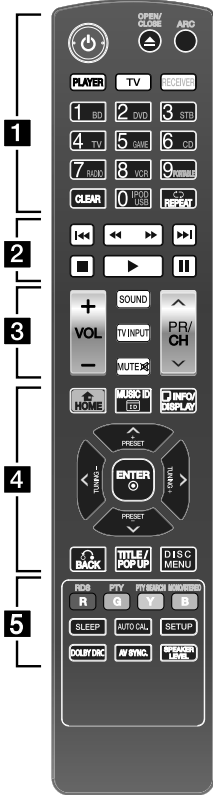
- iPod cable



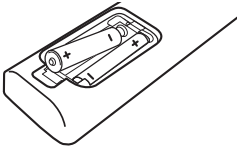
Note

The iPod cable is included when you purchase iPhone or iPod.

Remote control



Battery Installation



Remove the battery cover on the rear of the Remote Control, and insert two R03 (size AAA) batteries with **+** and **-** matched correctly.

About the remote control modes

The remote control has a specific operating mode for use with each type of component. Modes are selected by using the three RECEIVER, PLAYER, and TV buttons on the remote control.

- Press RECEIVER, PLAYER, or TV buttons to select the component you want to operate.
 - RECEIVER: In RECEIVER Mode, you can control the receiver.
 - PLAYER: In PLAYER Mode, you can control a Blu-ray disc player, DVD player, DVD recorder, etc. (For LG product only)
 - TV: In TV Mode, you can control TV.
- Referring to the following contents (pages 7-9), press the corresponding button for the operation.

To control the RECEIVER

..... **1**

⏻ (POWER): Turns the receiver on or off.

ARC: Outputs audio signal of the TV via an HDMI cable (Type A, High speed HDMI™ cable or Type A, High speed HDMI™ cable with Ethernet).

RECEIVER: Controls the receiver.

Press the corresponding button for the operation after pressing the RECEIVER button.

INPUT buttons: Selects the input source you want to use.

- **BD:** Selects the input source connected to BD IN jack.
- **DVD:** Selects the input source connected to DVD IN jack.
- **STB:** Selects the input source connected to STB IN jack.
- **TV:** Selects the input source connected to TV IN jack.
- **GAME:** Selects the input source connected to GAME IN jack.
- **CD:** Selects the input source connected to CD IN jack.
- **RADIO:** Selects the FM/AM.
- **VCR:** Selects the input source connected to VCR IN jack.



- **PORTABLE:** Selects the input source connected to PORT. IN jack.
- **IPOD/USB:** Selects the input source connected to IPOD/USB Port.

Note
In RECEIVER mode, the 0-9 numerical buttons does not work.

CLEAR: Deletes all the preset stations in tuner mode.

REPEAT (↺↻): Plays the files repeatedly or randomly in iPod or USB mode.

..... **2**

◀◀/▶▶ (SCAN): Searches backward or forward.

I◀◀/▶▶I (SKIP): Goes to the next or previous chapter / track / file.

■ (STOP): Stops playback.

▶ (PLAY): Starts playback.

|| (PAUSE): Pauses playback.

..... **3**

VOL +/-: Adjusts speaker volume.

SOUND: Selects a sound effect mode.

MUTE (⊗): Turns off the sound temporarily. Press the button again to restore the sound.

..... **4**

INFO/DISPLAY (□): Displays information of music files or digital input source.

ENTER (⊙): Acknowledges menu selection.

PRESET +/-: Selects a preset stations in tuner mode.

TUNING +/-: Tunes in the desired radio station in tuner mode.

BACK (⏪): Returns to the upper menu of any displayed menu.

DISC MENU: Returns to the upper menu in iPod mode.

..... **5**

MONO/STEREO: Selects mono/ stereo in FM mode.

RDS: Radio Data System.

PTY: Views the programme type of the RDS.

PTY SEARCH: Searches programme type.

SLEEP: Sets the system to turn off automatically at a specified time.

AUTO CAL.: Performs the Auto Sound Calibration.

SETUP: Moves to the [SETUP] menu.

DOLBY DRC: Sets the Dolby DRC (Dynamic Range Control).

AV SYNC.: Delays the sound output using this function when the image is slower than the sound.

SPEAKER LEVEL: Sets the sound level of desired speaker.

To control the PLAYER (Blu-ray disc player, DVD player, DVD recorder, etc.)

..... **1**

- ⏻ (POWER):** Turns the player on or off.
- ⏮ (OPEN/CLOSE):** Opens and closes the disc tray.
- PLAYER:** Controls the PLAYER (Blu-ray disc player, DVD player, DVD recorder, etc.). Press the corresponding button for the operation after pressing the PLAYER button.

0-9 numerical buttons: Selects numbered options in a menu or inputs letters in the keypad menu.

CLEAR: Removes a mark on the search menu or a number when setting the password.

REPEAT (↺): Repeats a desired section or sequence.

..... **2**

- ⏪/⏩ (SCAN):** Searches backward or forward.
- ⏮/⏭ (SKIP):** Goes to the next or previous chapter / track / file.
- (STOP):** Stops playback.
- ▶ (PLAY):** Starts playback.
- ⏸ (PAUSE):** Pauses playback.

..... **4**

- HOME (🏠):** Displays or exits the [Home Menu].
- INFO/DISPLAY (ℹ):** Displays or exits On-Screen Display.

Direction buttons (</>/^/∨): Selects an option in the menu.

ENTER (⊙): Acknowledges menu selection.

BACK (↶): Returns to the upper menu of any displayed menu.

TITLE/POP UP: Displays the DVD title menu or BD-ROM's pop-up menu, if available.

DISC MENU: Accesses menu on a disc.

..... **5**

Colored (R, G, Y, B) buttons:
Displays an operation guide on the TV screen when the color buttons are available. Follow the operation guide to perform a selected operation.

To control the TV

..... **1**

- ⏻ (POWER):** Turns the TV on or off.
- 0-9 numerical buttons:** Selects numbered options in a menu or inputs letters in the keypad menu.

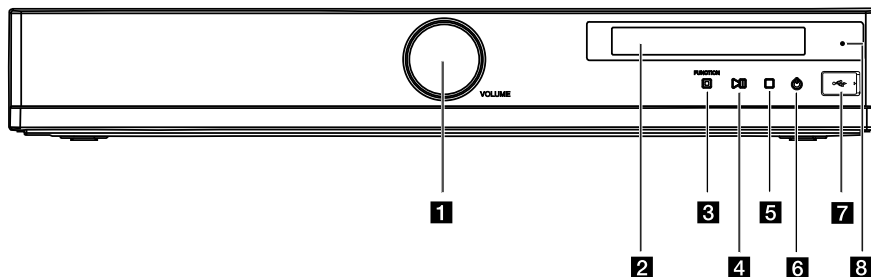
..... **3**

- VOL +/-:** Adjusts the volume.
- TV INPUT:** Selects the TV's source.
- MUTE (🔇):** Turns off the sound temporarily. Press the button again to restore the sound.
- PR/CH ^ / ∨:** Selects the channel.

! Note

The above explanation is intended to serve as an example only. Therefore, depending on the component, the above operation may not be possible or may operate differently than described. In that case, use the remote control supplied with the component.

Front panel



1 Volume Control

Adjusts speaker volume.

2 Display Window

Shows the current status of the receiver.

3 FUNCTION

Selects the input source you want to use.

4 ►|| (PLAY / PAUSE)

Starts or pauses playback in iPod or USB mode.

5 ■ (STOP)

Mode	To	Do this
USB	Pause	Press ■ (STOP).
	Playback	Press ► (PLAY / PAUSE).
	Stop	Press ■ (STOP) twice.
IPOD	Pause	Press ■ (STOP).
	Playback	Press ► (PLAY / PAUSE).

6 ⏻ (POWER)

Turns the receiver on or off.

7 iPod/USB Port

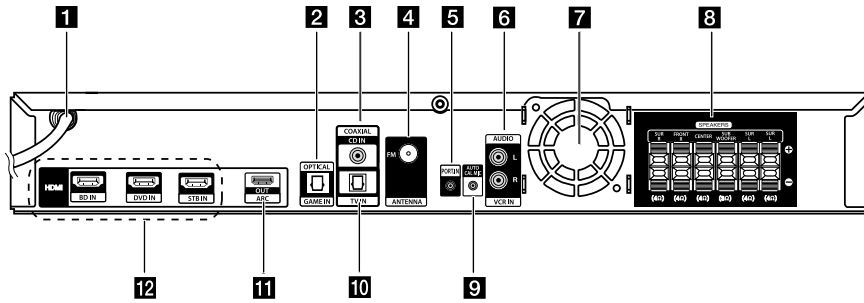
Connects an iPod/USB device to iPod/USB Port.

8 STAND BY/HDMI THRU indicator

Lights up as follows:

- Red : The receiver is in standby mode.
- Blue : The receiver is in standby mode, and control for HDMI is set to on.
- Lights off when the receiver is turned on.

Rear panel



1 AC power cord

2 OPTICAL GAME IN

Connects to other components with an optical digital audio output.

3 COAXIAL CD IN

Connects to other components with a coaxial digital audio output.

4 Antenna connectors

Connects to the FM wire antenna.

5 PORT. IN

Connects to a portable device (MP3 player, etc) to PORT. IN jack.

6 AUDIO VCR IN

Connects to the components with analog audio out jacks.

7 Cooling fan

8 Speakers connectors

Connects to the speakers and subwoofer.

9 AUTO CAL MIC

Connects to the optimizer microphone for the Auto Sound Calibration function.

10 OPTICAL TV IN

Connects to the TV with an optical digital audio output.

11 HDMI OUT

Connects to a TV. When the TV is compatible with ARC (Audio Return Channel) function, you can output the TV sound via the speakers connected to the receiver without connecting the analog audio cable or the optical digital audio cable.

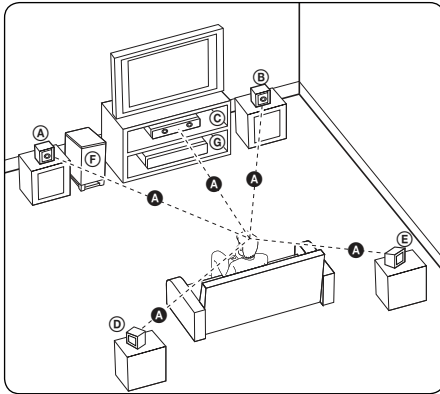
12 HDMI IN

Connects to a DVD player, satellite tuner, set top box, Blu-ray Disc player, etc.. The image is output to a TV or a projector while the sound can be output from a TV or/and speakers connected to this receiver.

Positioning the system

The following illustration shows an example of positioning the system. Note that the illustrations in these instructions differ from the actual unit for explanation purposes.

For the best possible surround sound, all the speakers other than the subwoofer should be placed at the same distance from the listening position (A).



(A) Front left speaker (L)/ (B) Front right speaker (R):

Place the front speakers to the sides of the monitor or screen and as flush with the screen surface as possible.

(C) Center speaker:

Place the center speaker above or below the monitor or screen.

(D) Surround left speaker (L)/ (E) Surround right speaker (R):

Place these speakers behind your listening position, facing slightly inwards.

(F) Subwoofer:

The position of the subwoofer is not so critical, because low bass sounds are not highly directional. But it is better to place the subwoofer near the front speakers. Turn it slightly toward the center of the room to reduce the wall reflections.

(C) Receiver

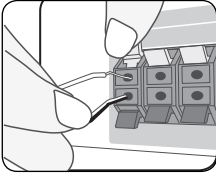
⚠ Caution

- Be careful to make sure children not to put their hands or any objects into the *speaker duct.
*Speaker duct: A hole for plentiful bass sound on speaker cabinet (enclosure).
- Place the center speaker at a safe distance from the child's reach.
Otherwise it may result in the speaker falling down and causing personal injury and/or property damage.
- The speakers contain magnetic parts, so colour irregularity may occur on the CRT TV screen or PC monitor screen. Please use the speakers away from the TV screen or PC monitor screen.

Speaker Connection

Attaching the speakers to the receiver

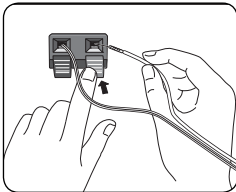
1. Connect speaker wires to the receiver.
Each speaker wire is color-coded. Use matching color wires for corresponding speakers.



Color	Speaker	Position
Grey	Rear	Rear right
Blue	Rear	Rear left
Green	Center	Center
Orange	Sub woofer	Any front position
Red	Front	Front right
White	Front	Front left

2. Connect the speaker wire to the terminal on the speaker.

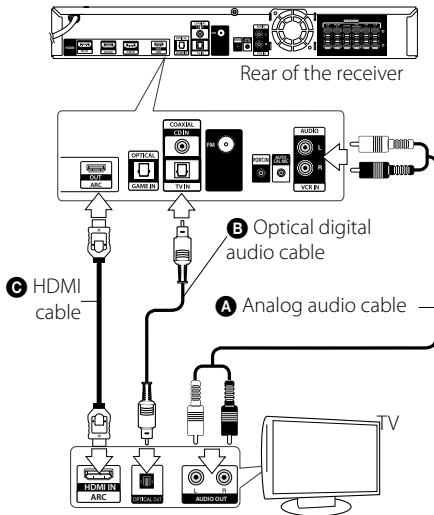
Make sure the wire marked black goes in to the terminal marked "-" (minus) and the other wire goes in to the terminal marked "+" (plus).



Connecting to Your TV

You can watch the selected input image when you connect the HDMI OUT jack to a TV.

Before connecting the cables, be sure to disconnect the AC power cord.



Set the TV's source to HDMI (refer to TV's Owner's manual).

Note

- Turn off the power to all components before making any connections.
- When connecting optical digital audio cables, insert the cable plugs straight in until they click into place.
- Do not bend or tie optical digital audio cables.
- When you use ARC (Audio Return Channel) function, the audio signal is output from the TV to the unit. When the TV is compatible with ARC (Audio Return Channel) function, the TV sound will output from the speakers connected to the unit. Be sure to activate the ARC (Audio Return Channel) function by pressing ARC.

It is not necessary to connect all the cables. Connect the cables according to the jacks of your components.

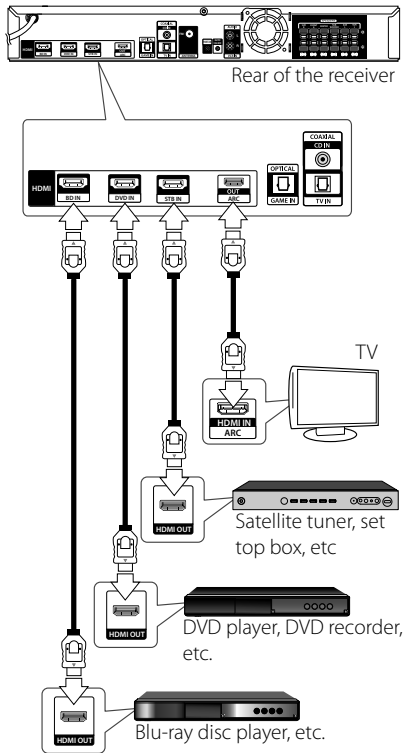
Connect	To
<p>A Analog audio cable or B Optical digital audio cable</p>	<p>output the TV sound via the speakers connected to the receiver. Be sure to turn off the TV's volume or activate the TV's muting function.</p>
<p>C HDMI cable (Type A, High speed HDMI™ cable or Type A, High speed HDMI™ cable with Ethernet)</p>	<p>output the image to a TV while the sound can be output from a TV or/and speakers connected to the receiver. When the TV is compatible with ARC (Audio Return Channel) function, you can output the TV sound via the speakers connected to the receiver without connecting A Analog audio cable or B Optical digital audio cable. For details, see "Enjoying the TV sound via an HDMI connection (Audio Return Channel)" (page 31). Be sure to turn off the TV's volume or activate the TV's muting function.</p>

Connecting components with HDMI jack

You can enjoy the image and sound from your component through this connection.

It is not necessary to connect all the cables. Connect the cables according to the jacks of your components.

Connect the HDMI OUT ARC jack on the receiver to the HDMI IN jack on a HDMI compatible TV or monitor. Connect the HDMI BD IN, HDMI DVD IN, HDMI STB IN jack on the receiver to your components with HDMI OUT jack using a HDMI cable (Type A, High speed HDMI™ cable or Type A, High speed HDMI™ cable with Ethernet).



Additional Information for HDMI

- When you connect a HDMI or DVI compatible device make sure of the following:
 - Try switching off the HDMI/DVI device and this receiver. Next, switch on the HDMI/DVI device and leave it for around 30 seconds, then switch on this receiver.
 - The connected device's video input is set correctly for this receiver.
 - The connected device is compatible with 720x480p (NTSC), 720x576p (PAL), 1280x720p, 1920x1080i or 1920x1080p video input.
- Not all HDCP-compatible HDMI or DVI devices will work with this receiver.
 - The picture will not be displayed properly with non-HDCP device.

Note

- If a connected HDMI device does not accept the audio output of the receiver, the HDMI device's audio sound may be distorted or may not output.
- Changing the resolution when the connection has already been established may result in malfunctions. To solve the problem, turn off the receiver and then turn it on again.
- When the HDMI connection with HDCP is not verified, TV screen is changed to black screen. In this case, check the HDMI connection, or disconnect the HDMI cable.
- If there are noises or lines on the screen, please check the HDMI cable (length is generally limited to 4.5 m(15 ft.)).
- Depending on connection or playing status TV or external device connected to the receiver, the receiver may be switched to OPTICAL input source or ARC function.
- The Control for HDMI function will not operate correctly in the following cases:
 - When you connect the receiver to a components which does not correspond with Simplink;
 - When you connect the receiver and components using other than HDMI connection.
We recommend that you connect the receiver to products featuring "Simplink". Depending on the connected component, the Simplink function may not work. Refer to the operating instructions of the component.

What is SIMPLINK?



Some functions of this unit are controlled by the TV's remote control when this unit and LG TV's with SIMPLINK are connected through HDMI connection.

Controllable functions by LG TV's remote control; Power Off, Volume control, etc.

Refer to the TV owner's manual for the details of SIMPLINK function.

LG TV's with SIMPLINK function has the logo as shown above.

! Note

Depending on the disc type or playing status, some SIMPLINK operation may differ from your purpose or not work.

ARC (Audio Return Channel) function

The ARC function enables an HDMI capable TV to send the audio stream to HDMI OUT of this receiver.

To use this function:

- Your TV must support the HDMI-CEC and ARC function and the HDMI-CEC and ARC must be set to On.
- The setting method of HDMI-CEC and ARC may differ depending on the TV. For details about ARC function, refer to your TV manual.
- You must use the HDMI cable (Type A, High Speed HDMI™ cable with Ethernet).
- You must connect with the HDMI IN that supports the ARC function using the HDMI OUT on this receiver.
- You can connect only one Home Theater to TV compatible with ARC.

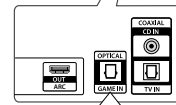
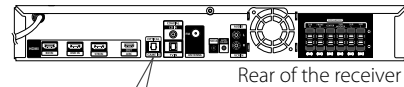
Connecting components with digital audio jacks

You can enjoy the sound from your component with a digital optical or coaxial connection through the speakers of this system.

Before connecting the cables, be sure to disconnect the AC power cord.

Optical digital audio connection

Connect the OPTICAL GAME IN jack on the receiver to your components with OPTICAL OUT jack using an optical digital audio cable.

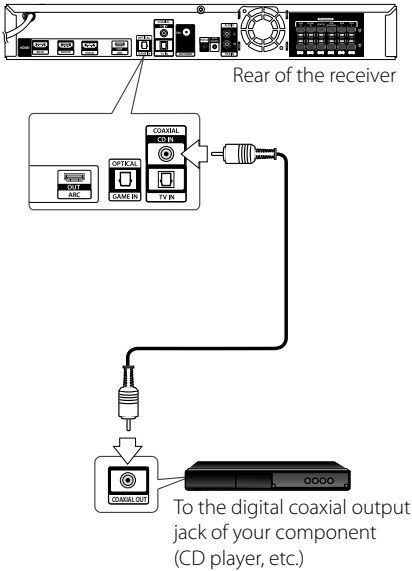


To the digital optical output jack of your component (Game console, etc.)



Coaxial digital audio connection

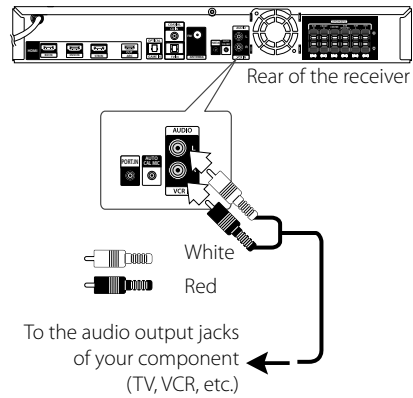
Connect the COAXIAL CD IN jack on the receiver to your components with COAXIAL OUT jack using a coaxial digital audio cable.



Connecting component with analog audio jacks

You can enjoy the sound from component with analog audio jacks through the speakers of this system.

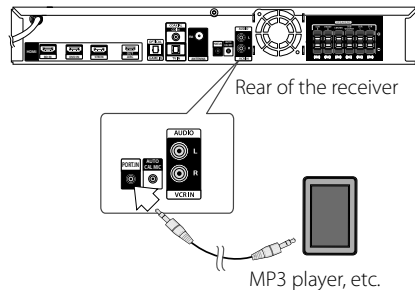
Connect the AUDIO VCR IN jack on the receiver to your components with analog audio output jacks using an analog audio cable.



Connecting the portable device

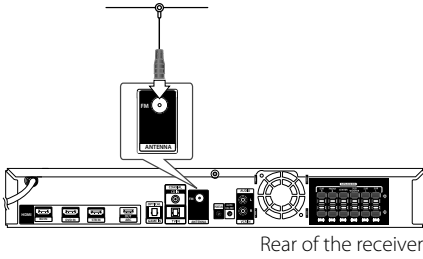
You can enjoy the sound from your portable audio player through the speakers of this system.

Connect the PORT. IN jack on the receiver to the headphones (or line out) jack on your portable device (MP3 player, etc...) using a portable cable (\varnothing 3.5 mm).



Connecting the antennas

Connect the supplied antenna for listening to the radio.



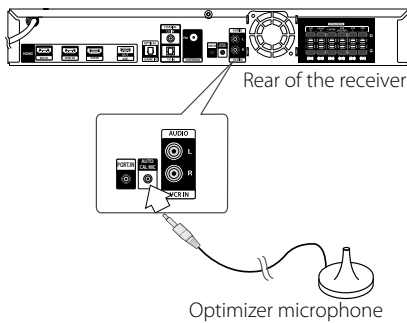
Note

After connecting the FM wire antenna, keep it as horizontal as possible. Be sure to fully extend the FM wire antenna.

Connecting the optimizer microphone

You can perform the Auto Sound Calibration function by connecting the optimizer microphone (∅3.5 mm).

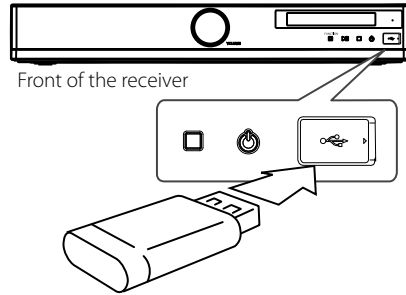
Connect the optimizer microphone (∅3.5 mm) into the AUTO CAL MIC jack on this unit.



Connecting the USB device

You can enjoy the sound of music files contained in the USB device.

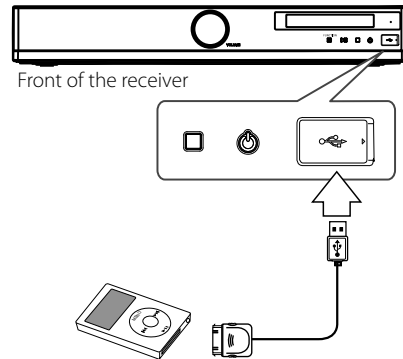
1. Open the iPod/USB cover.
2. Insert a USB device to the iPod/USB Port until it fits into place.



Connecting the iPod

You can enjoy the sound with your iPod. For details about iPod, refer to the iPod's User Guide.

1. Open the iPod/USB cover.
2. Insert your iPod to the iPod/USB Port until it fits into place.
Your iPod is automatically turned on and recharging starts.



Calibrating the appropriate settings automatically (Auto Sound Calibration)

This function allows you to perform automatic calibration as follows:

- Adjusts the speaker level.
- Measures the distance of each speaker from your listening position.
- Creates an appropriate EQ (Equalizer) depending on your room structure.

The function is designed to obtain proper sound balance in your room. However, you can adjust the speaker levels manually according to your preference. For details, see "Adjusting the speaker levels" (page 27).

Before performing Auto Sound Calibration

- Before you perform the Auto Sound Calibration, set up and connect the speakers (pages 12-13).
- The AUTO CAL MIC jack is used for the supplied optimizer microphone only. Do not connect other microphones to this jack. Doing so may damage the receiver and the microphone.
- Release the wire of optimizer microphone in order to get a more accurate measurement.
- During the calibration, the sound that comes out of the speakers is very loud. The volume of the sound cannot be adjusted. Pay attention to the presence of children or to the effect on your neighborhood.
- Perform the Auto Sound Calibration in a quiet environment to avoid the effect of noise and to get a more accurate measurement.
- If there are any obstacles in the path between the optimizer microphone and the speakers, the calibration cannot be performed correctly. Remove any obstacles from the measurement area to avoid measurement error.

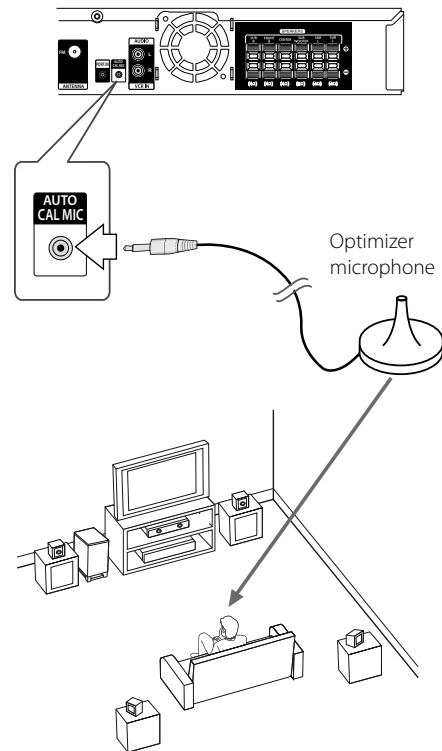
! Note

If an error message appears on the display while you are performing the Auto Sound Calibration, check the above contents.

Performing Auto Sound Calibration

1. Connect the optimizer microphone ($\phi 3.5$ mm) into the AUTO CAL MIC jack on this unit. (page 18).
2. Set up the optimizer microphone.

Place the optimizer microphone at your listening position. You can also use a stool or tripod so that the optimizer microphone remains at the same height as your ears.



! Note

When you face the speaker towards the optimizer microphone, you will get a more accurate measurement.

3. Press AUTO CAL.

"TEST START" appears on the display window and "START" blinks on the display window.

4. Press ENTER (⊙).

"TEST1 1/4" appears on the display window.

The Auto Sound Calibration is automatically measured in the first position from each speaker. (TEST: 1/4 → TEST: 2/4 → TEST: 3/4 → TEST: 4/4)

The measurement process will take approximately 4 to 5 minutes to complete.

! Note

- If each speaker is not connected, the measurement is stopped.
- If "INSERT MIC" appears on the display window, you cannot perform the Auto Sound Calibration. Connect the optimizer microphone, then perform the Auto Sound Calibration.

5. When the measurement ends, "RESULT SHOW" appears on the display window for about 5 seconds.

After about 5 seconds, "RESULT USE" appears on the display window.

6. If you want to confirm the measurement result, press ENTER (⊙) while "RESULT SHOW" is showed on the display window.

If you press ENTER (⊙) when "RESULT USE" is showed on the display window, proceed to step 11.

7. Choose the LEVEL and DISTANCE by pressing \wedge / \vee .

If you press ENTER (⊙) when "RESULT USE" is showed on the display window, proceed to step 11.

8. After pressing ENTER (⊙), confirm the measured value by pressing \wedge / \vee .

9. Press ENTER (⊙) repeatedly until "RESULT USE" appears on the display window.

10. Press ENTER (⊙) again.

"1 - YES" and "2 - NO" appear on the display window.

11. Press numeric 1 to save the measurement result when "1 - YES" and "2 - NO" are showed on the display window.

After "ASC DONE" appears on the display window, the level and the distance is changed automatically. Then the EQ (Equalizer) is set automatically.

! Note

- When you have finished the Auto Sound Calibration, disconnect the optimizer microphone from the unit.
- If you have changed the position of the speakers, it is recommended that you perform Auto Sound Calibration again in order to enjoy the surround sound.
- The Auto Sound Calibration has been completed. However, the noise level is high while you perform the Auto Sound Calibration. When you play a sound source, the sound source may not be played properly. In this case, try to perform the Auto Sound Calibration in a quiet environment or reset the receiver to its original factory settings (refer to the page 23).
- If the muting function has been activated or the volume level has been set to "0" before you perform Auto Sound Calibration, you can not perform it. After the "CHECK VOL" appears on the display window for about 5 seconds, it returns to the previous step.

Turning the Auto Sound Calibration on/off

When you have completed the Auto Sound Calibration, you can turn it on/off.

Press AUTO CAL. repeatedly.

"ASC ON" or "ASC OFF" appears on the display window.

- ASC ON : Activates the EQ (Equalizer).

- ASC OFF : Deactivates the EQ (Equalizer).

! Note

If you perform the Auto Sound Calibration for the first time or reset the receiver to its original factory settings, the "TEST START" appears on the display window.

Settings and adjustments using the SETUP menu

By using the SETUP menus, you can make various adjustments to customize the unit.

SETUP configuration

SETUP

1 TESTTONE	<ul style="list-style-type: none"> TESTING : FL TESTING : C TESTING : FR TESTING : SR TESTING : SL TESTING : SW
2 LEVEL	<ul style="list-style-type: none"> FL : - 6 ~ + 6 C : - 6 ~ + 6 FR : - 6 ~ + 6 SR : - 6 ~ + 6 SL : - 6 ~ + 6 SW : - 6 ~ + 6
3 DISTANCE	<ul style="list-style-type: none"> FL : 0.0 M ~ 6.0 M C : 0.0 M ~ 6.0 M FR : 0.0 M ~ 6.0 M SR : 0.0 M ~ 6.0 M SL : 0.0 M ~ 6.0 M SW : 0.0 M ~ 6.0 M
4 A/V SYNC	0 MS ~ 300 MS
5 DRC	<ul style="list-style-type: none"> DRC OFF DRC ON
6 SET HDMI	<ul style="list-style-type: none"> STDBY OFF STDBY ON
7 AUTO CAL	TEST START
8 RESET	1 - YES 2 - NO

TESTTONE menu

You can adjust the speaker levels while listening to the test tone from your listening position.

1. Press RECEIVER, and then press SETUP.
"1 TESTTONE" appears on the display window.
2. Press ENTER (⏏).

The test tone is emitted from each speaker in sequence as follows:

TESTING : FL → TESTING : C → TESTING : FR →
TESTING : SR → TESTING : SL → TESTING : SW

Display	Description
TESTING : FL	Front left speaker (- 6 ~ 0)
TESTING : C	Center speaker (- 6 ~ + 6)
TESTING : FR	Front right speaker (- 6 ~ 0)
TESTING : SR	Surround right speaker (- 6 ~ + 6)
TESTING : SL	Surround left speaker (- 6 ~ + 6)
TESTING : SW	Subwoofer (- 40 ~ + 6)

3. If you want to adjust the speaker level, press ENTER (⏏) when the desired speaker is showed on the display window.
4. Press </> repeatedly until the desired speaker appears.
5. Press ^ / v to adjust the speaker level and then press ENTER (⏏).
6. Press RETURN to move to the previous menu. Press SETUP to exit the SETUP menu.

LEVEL menu

You can adjust the level of each speaker to suit your preference.

1. Press RECEIVER, and then press SETUP.
"1 TESTTONE" appears on the display window.
2. Press \wedge/\vee repeatedly until "2 LEVEL" appears, then press ENTER (⊙).
3. Press $\lt;/\gt$ repeatedly until the desired speaker appears.

Display	Description
FL	Front left speaker (-6 ~ 0)
C	Center speaker (-6 ~ +6)
FR	Front right speaker (-6 ~ 0)
SR	Surround right speaker (-6 ~ +6)
SL	Surround left speaker (-6 ~ +6)
SW	Subwoofer (-40 ~ +6)

4. Press \wedge/\vee to adjust the level of each speaker and then press ENTER (⊙).
5. Press RETURN to move to the previous menu. Press SETUP to exit the SETUP menu.

DISTANCE menu

You can set the distance of the speakers connected to this unit.

1. Press RECEIVER, and then press SETUP.
"1 TESTTONE" appears on the display window.
2. Press \wedge/\vee repeatedly until "3 DISTANCE" appears, then press ENTER (⊙).
3. Press $\lt;/\gt$ repeatedly until the desired speaker appears.

Display	Description
FL	Front left speaker (0.0 M ~ 6.0 M)
C	Center speaker (0.0 M ~ 6.0 M)
FR	Front right speaker (0.0 M ~ 6.0 M)
SR	Surround right speaker (0.0 M ~ 6.0 M)
SL	Surround left speaker (0.0 M ~ 6.0 M)
SW	Subwoofer (0.0 M ~ 6.0 M)

4. Press \wedge/\vee to set the distance of the speakers and then press ENTER (⊙).
5. Press RETURN to move to the previous menu. Press SETUP to exit the SETUP menu.

A/V SYNC menu (Adjusting the audio delay)

You can delay the sound output using this function when the image is slower than the sound.

1. Press RECEIVER, and then press SETUP.
"1 TESTTONE" appears on the display window.
2. Press \wedge/\vee repeatedly until "4 A/V SYNC" appears, then press ENTER (⊙).
3. Press \wedge/\vee to adjust the delay between sound and image and then press ENTER (⊙).
You can adjust from 0 MS to 300 MS in 10 MS steps.
4. Press RETURN to move to the previous menu. Press SETUP to exit the SETUP menu.

! Note

You may not be able to adjust the delay between sound and image perfectly using this function.

DRC menu

This function allows you to listen to a movie at a lower volume without losing clarity of sound. You can compress the dynamic range of the Dolby Digital audio output.

1. Press RECEIVER, and then press SETUP.
"1 TESTTONE" appears on the display window.
2. Press **▲/▼** repeatedly until "5 DRC" appears, then press ENTER (⊙).
3. Press **▲/▼** to set the DRC and then press ENTER (⊙).
- DRC OFF : Deactivates this function.
- DRC ON : Activates this function.
4. Press RETURN to move to the previous menu. Press SETUP to exit the SETUP menu.

! Note

Audio dynamic range compression lets you compress the dynamic range of the soundtrack based on the dynamic range information included in the Dolby Digital signal.

SET HDMI menu (HDMI Standby Pass Trough)

When the TV is turned on while the receiver is in the standby mode, the sound and image is output from the TV when you have played a component connected to HDMI IN jack.

1. Press RECEIVER, and then press SETUP.
"1 TESTTONE" appears on the display window.
2. Press **▲/▼** repeatedly until "6 SET HDMI" appears, then press ENTER (⊙).
3. Press **▲/▼** to set the STDBY and then press ENTER (⊙).
- STDBY OFF : Deactivates this function.
- STDBY ON : Activates this function.
4. Press RETURN to move to the previous menu. Press SETUP to exit the SETUP menu.

AUTO CAL menu

This allows you to perform automatic calibration. For details, see the pages 19 - 20.

1. Press RECEIVER, and then press SETUP.
"1 TESTTONE" appears on the display window.
2. Press **▲/▼** repeatedly until "7 AUTO CAL" appears, then press ENTER (⊙).
"TEST START" appears on the display window and "START" blinks on the display window.
3. Proceed the steps 4 - 11 on the page 20.
4. Press RETURN to move to the previous menu. Press SETUP to exit the SETUP menu.

RESET menu

This allows you to initialize settings you have made in the SETUP menu.

1. Press RECEIVER, and then press SETUP.
"1 TESTTONE" appears on the display window.
2. Press **▲/▼** repeatedly until "8 RESET" appears, then press ENTER (⊙).
"1 - YES 2 - NO" appears on the display window.
3. Press the numeric 1 to reset the unit to its original factory settings.
If you don't want to reset it, press the numeric 2.
4. Press RETURN to move to the previous menu. Press SETUP to exit the SETUP menu.

Selecting the input source

This section explains how to select the input source (i.e., the AV component that you want to listen to or watch).

1. Press **POWER** to turn the unit on.
2. Press **RECEIVER**.
The button is illuminated.
3. Press **INPUT** buttons to select a source
The selected input appears on the display window.

To select the	Button
Blu-ray disc player, etc., connected to BD IN jack	BD
DVD player, DVD recorder, etc., connected to DVD IN jack	DVD
Satellite tuner, set top box, etc., connected to STB IN jack	STB
TV, etc., connected to OPTICAL TV IN jack	TV
Game console, etc., connected to OPTICAL GAME IN jack	GAME
CD player, etc., connected to COAXIAL CD IN jack	CD
Built-in tuner	RADIO
VCR, etc., connected to AUDIO VCR IN jack	VCR
Portable device (MP3 player, etc.), connected to PORT. IN jack	PORTABLE
iPod/USB device, connected to iPod/USB Port	IPOD/USB

You can also press **FUNCTION** on the front panel.

4. Turn on the component and start playback.
5. To adjust the volume, rotate the **VOLUME** on the front panel, or press **VOL +/-** on remote control.

To activate the muting function

Press **MUTE** on the remote control. To cancel, press **MUTE** on the remote control again or rotate the **VOLUME** on the front panel.

Enjoying sound/images from the components connected to the receiver

Enjoying Blu-ray Disc/DVD

1. Turn on the TV.
2. Turn on the Blu-ray Disc player or DVD player, then place the disc on the tray.
3. Turn on the receiver.
4. Press **BD** or **DVD**.



You can also press **FUNCTION** on the front panel to select "BD" or "DVD".

5. Change the TV input.
For details, refer to the operating instructions of the TV.
6. Play back the disc.
7. Adjust the volume of the receiver.

Enjoying a satellite tuner or set top box

1. Turn on the TV.
2. Turn on the satellite tuner or set top box and the receiver.
3. Press STB.



You can also press FUNCTION on the front panel to select "STB".

4. Change the TV input.
For details, refer to the operating instructions of the TV.
5. Adjust the volume of the receiver.

Enjoying TV

1. Turn on the TV and choose a program.
For details, refer to the operating instructions of the TV.
2. Turn on the receiver.
3. Press TV.



You can also press FUNCTION on the front panel to select "TV".

4. Adjust the volume of the receiver.

! Note

- The audio input of the TV is switched and the image from the TV tuner is displayed on the TV screen automatically by pressing the TV button.
- The sound may be output from the TV's speaker. In this case, turn the volume of the TV's speaker down to the minimum.

Enjoying a game console, etc

1. Turn on the component connected to OPTICAL GAME IN jack.
2. Turn on the receiver.
3. Press GAME.



You can also press FUNCTION on the front panel to select "GAME".

4. Play back the component.
5. Adjust the volume of the receiver.

Enjoying a CD player, etc

1. Turn on the component connected to COAXIAL CD IN jack.
2. Turn on the receiver.
3. Press CD.



You can also press FUNCTION on the front panel to select "CD".

4. Play back the component.
5. Adjust the volume of the receiver.

Enjoying a portable device (MP3 player, etc.)

1. Turn on the portable device (MP3 player, etc.)
2. Turn on the receiver.
3. Press PORTABLE.



You can also press FUNCTION on the front panel to select "PORTABLE".

4. Play back the component.
5. Adjust the volume of the receiver.

4

Operating

Enjoying a VCR, etc

1. Turn on the component connected to AUDIO VCR IN jack.
2. Turn on the receiver.
3. Press VCR.



You can also press FUNCTION on the front panel to select "VCR".

4. Change the TV input.
For details, refer to the operating instructions of the TV.
5. Play back the component.
6. Adjust the volume of the receiver.

Enjoying the USB or iPod connected to the IPod/USB Port

1. Turn on the receiver.
2. Press IPOD/USB.



You can also press FUNCTION on the front panel to select "USB" or "IPOD".

3. Connect the USB or iPod.
4. Play back the USB or iPod.
5. Adjust the volume of the receiver.

Adjusting the speaker levels

You can adjust the level of each speaker to suit your preference.

1. Press **SPEAKER LEVEL**.
"SW" appears on the display window.
2. Press **</>** repeatedly to select a desired speaker.
3. Press **▲/▼** to adjust the sound level of the selected speaker while the indicator is displayed on the display window.

Display	Description
SW	Subwoofer (- 40 ~ + 6)
FL	Front left speaker (- 6 ~ 0)
C	Center speaker (- 6 ~ + 6)
FR	Front right speaker (- 6 ~ 0)
SR	Surround right speaker (- 6 ~ + 6)
SL	Surround left speaker (- 6 ~ + 6)

4. Repeat and adjust the sound level of the other speakers.

Enjoying various sound mode

You can select a suitable sound mode. Press **SOUND** repeatedly until the desired mode appears on the front panel display or the TV screen. The displayed items for the equalizer maybe different depending on sound sources and effects.

Display	Description
NAT PLUS	You can enjoy the natural sound effect same as a 5.1-channel.
NATURAL	You can enjoy comfortable and natural sound.
BYPASS	You can enjoy the 2 channel sound from front speakers and subwoofer.

BASS	During playback, reinforces the bass sound.
PLII MOVIE	Performs Dolby Pro Logic II Movie mode decoding. This setting is ideal for movies encoded in Dolby Surround. In addition, this mode can reproduce sound in 5.1 channel for watching videos of overdubbed or old movies.
PLII MUSIC	Performs Dolby Pro Logic II Music mode decoding. This setting is ideal for normal stereo sources such as CDs.
CLRVOICE	This mode makes voice sound clear, improving the quality of voice sound.
VIRTUAL	You can enjoy more virtual surround sound.
GAME	Reproduces powerful and realistic sound, suited for playing video games.
NIGHT	You can enjoy sound effects and hear the dialog clearly even at a low volume level. This function is useful for enjoying sound at night.
UPSCALER	Reproduces a clear enhanced sound image from your portable audio device. This mode is ideal for MP3 and other compressed music.
LOUDNESS	Improves the bass and treble sound.
ASC EQ	Enjoys the EQ (Equalizer) sound according to measurement result when the Auto Sound Calibration has been completed.

Listening to FM radio

You can listen to FM broadcast through the built-in tuner. Before operation, make sure you have connected the FM antenna to the unit. (Page 18)

Automatic tuning

1. Press RADIO to select tuner (FM). The last received station is tuned in.

You can also press FUNCTION on the front panel.

2. Press TUNING - or TUNING + for more than 2 seconds.

Press TUNING - for more than 2 seconds to scan from high to low.

Press TUNING + for more than 2 seconds to scan from low to high.

The unit stops scanning whenever a station is received.

3. Adjust the volume by rotating VOLUME on the front panel or by pressing VOL +/- on the remote control.

Manual tuning

Press TUNING - or TUNING + briefly and repeatedly on the FM mode to select a station you want.

Improving poor FM reception

Press B (blue) (MONO/STEREO) colored button on the remote control. This will change the tuner from stereo to mono and usually improve the reception.

Presetting radio stations

You can preset up to 50 FM stations.

You can easily tune in the stations you often listen to.

1. Press RADIO to select tuner (FM). The last received station is tuned in.

You can also press FUNCTION on the front panel.

2. Tune in the station that you want to preset using Automatic tuning or Manual tuning.
3. Press ENTER (⊙).

A preset number flashes on the display window for a few seconds. When a preset number flashes, do the step 4.

4. Press PRESET - or PRESET+ to select a preset number you want.

If a preset number is not flashed before you select the preset number, start again from the step 3.

5. Press ENTER (⊙) again.

The station is stored to the selected preset number. If a preset number is not flashed before you press ENTER (⊙), start again from the step 3.

6. Repeat the steps 2 to 5 to preset another station.

Tuning to preset stations

Before tuning to preset stations, make sure you preset radio stations.

1. Press RADIO to select tuner (FM). The last received station is tuned in.

You can also press FUNCTION on the front panel.

2. Press PRESET - or PRESET+ repeatedly to select the preset station you want.

Each time you press the button, you can select a preset station.

Deleting the preset stations

You can delete a preset station you want.

1. Press RADIO to select tuner (FM). The last received station is tuned in.
You can also press FUNCTION on the front panel.
2. Select the preset station to delete by pressing PRESET - or PRESET+.
3. Press CLEAR.
4. Press CLEAR again while the preset number flashes on the display window for a few seconds.
The preset station is deleted.
5. Repeat the steps 2 to 4 to delete another preset station.

Deleting all the preset stations

1. Press and hold CLEAR for about two seconds.
"ERASE ALL" appears on the display window.
2. Press CLEAR again while "ERASE ALL" is displayed.
All the preset stations are cleared.

Seeing information about a radio station

The FM tuner is supplied with the RDS (Radio Data System) facility. This shows information about the radio station being listened to. Press RDS repeatedly to cycle through the various data types:

Display	Description
PTY	(Programme Type Recognition) The programme type (e.g. Jazz or News) will appear in the display.
RT	(Radio Text) A text message contains special information from the broadcast station. This text may scroll across the display.
CT	(Time controlled by the channel) This shows the time and date as broadcast by the station.
PS	(Programme Service Name) The name of the channel will appear in the display

You can search the radio stations by programme type by pressing RDS. The display will show the last PTY in use. Press PTY one or more times to select your preferred programme type. Press PTY SEARCH. The tuner will search automatically, when a station is found the search will stop.

Playing back components with one-touch operation (One-Touch Play)

By a simple operation (one touch), the TV is switched to the HDMI mode.

1. Connect a component and the receiver with HDMI connections.
2. Select the connected HDMI source.
3. Play back a connected component.

The TV is turned on automatically and switched to the HDMI mode.

Note

The One-Touch Play may not be supported depending on the TV. For details, refer to the operating instructions of the TV.

4

Operating

Enjoying the TV sound from the speakers connected to the receiver (System Audio Control)

You can enjoy the TV sound from the speakers connected to the receiver by a simple operation. You can operate System Audio Control function using the TV menu. For details, refer to the operating instructions of the TV.

When System Audio Control function is turned on, the receiver will turn on and switches to the appropriate input automatically. (If the TV supports ARC (Auto Return Channel) function, the receiver is changed to the "ARC-HDMI". If the TV does not support ARC (Auto Return Channel) function, the receiver is changed to the "TV-OPT".)

TV sound is output from the speakers connected to the receiver, and the volume of the TV is minimized simultaneously.

You can use the System Audio Control function as follows.

- If you turn off the receiver, the sound will output from the TV speakers.
- You can adjust the receiver's volume when you adjust the TV volume.

Note

- If System Audio Control does not function according to your TV setting, refer to the operating instructions of the TV.
- When you connect a TV that does not have System Audio Control function, the System Audio Control function does not work.

Turning off the receiver with the TV (System Power Off)

When you turn the TV off by using the POWER button on the TV's remote control, the receiver turns off automatically. But the receiver will not turn off in IPOD, USB, and RADIO mode.

Some TV may not support this function. For details, refer to the operating instructions of the TV.

Enjoying the TV sound via an HDMI connection (Audio Return Channel)

The receiver can receive the audio signal of the TV via an HDMI cable (High speed HDMI™ cable with Ethernet) when your TV is compatible with the Audio Return Channel (ARC) function. You can enjoy TV sound via the receiver by using just one HDMI cable (High speed HDMI™ cable with Ethernet).

1. Press ARC.
2. To cancel it, choose a different function mode.

! Note

- This function is available only when the Control for HDMI function is set to on.
- Be sure that your TV is compatible with Audio Return Channel (ARC) function. For details on the TV settings, refer to the operating instructions of the TV.

Adjusting the audio delay

You can delay the sound output using this function when the image is slower than the sound.

1. Press AV SYNC.
 - The current settings is showed on the display window.
2. Press \blacktriangle / \blacktriangledown to adjust the delay between sound and image while the current settings are showed on the display window.
 - You can adjust from 0 MS to 300 MS in 10 MS steps.

! Note

- You may not be able to adjust the delay between sound and image perfectly using this function.
- This function is useful only for Dolby Digital, DTS and Linear PCM (2ch) input by optical and coaxial audio input signals.

DOLBY DRC (Dynamic Range Control)

This function allows you to listen to a movie at a lower volume without losing clarity of sound. You can compress the dynamic range of the Dolby Digital audio output.

Press DOLBY DRC repeatedly.

The current settings is showed on the display window.

- DRC OFF : Deactivates this function.
- DRC ON : Activates this function.

! Note

Audio dynamic range compression lets you compress the dynamic range of the soundtrack based on the dynamic range information included in the Dolby Digital signal.

Using the Sleep Timer

You can set the unit to turn off automatically at a specified time.

Press SLEEP repeatedly.

The minutes display (the remaining time) changes cyclically on the display window as follows.

DIMMER → SLEEP 180 → 150 → 120 → 90 → 80 → 70 → 60 → 50 → 40 → 30 → 20 → 10 → OFF (No display)

To check the remaining time, press SLEEP. The remaining time appears on the display window.

To cancel the sleep function, press SLEEP repeatedly until "SLEEP 10" appears, and then press SLEEP once again while "SLEEP 10" is displayed.

! Note

When you press SLEEP, the *DIMMER function is set.

* DIMMER function: The brightness of the display window is darkened by half.

When you press SLEEP again, the Sleep Timer function is set.

Displaying the file information

You can display various information on the display window by pressing INFO/DISPLAY (I).

Input source	Description
BD, DVD, STB, TV, GAME, or CD	Displays the audio format and audio channel. ("PCM 2/0.0", "DD 3/2.1", "DTS3/2.1", or "AAC3/2.1")
VCR or PORTABLE	"ANALOG" is displayed.
USB	Displays the file information during MP3/WMA playback.
IPOD	Displays the title, artist and album.

! Note







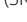



If there is no input source, the "-- 0/0.0" appears on the display window.

Playing music files using the USB device

You can play music files contained in the USB device.

Basic Operation

1. Insert a USB device to the iPod/USB Port until it fits into place.
2. Press IPOD/USB.
The total number of files is displayed on the display window.
3. Referring to the following table, press the corresponding button for the operation.

Remote control buttons	Description
 (PLAY)	Starts playback.
 (PAUSE)	Pauses playback.
 (STOP)	Stops playback.
 (SKIP)	During playback, press  or  to go to the next file or to return to the beginning of the current file. Press  twice briefly to step back to the previous file.
 (SCAN)	During playback, press and hold  or  and then release at a point you want.

Playing repeatedly or randomly

Press REPEAT () on the remote control repeatedly during playback.

Display	Description
OFF	Returns to normal playback.
RPT 1	Plays the current file repeatedly.
RPT D	Plays all the files repeatedly within a folder.
RPT ALL	Plays all the files repeatedly.
RANDOM	Plays all the files in random order.

Music file requirement

Music file compatibility with this unit is limited as follows:

- Sampling frequency : within 32 to 48 kHz (MP3), within 32 to 48 kHz (WMA)
- Bit rate : within 32 to 320 kbps (MP3), 40 to 192 kbps (WMA)
- Support Version : v2, v7, v8, v9
- Maximum files : Under 999
- File extensions : ".mp3"/ ".wma"
- We recommend that you use Easy-CD Creator, which creates an ISO 9660 file system.

USB device requirement

- A device using NTFS file system is not supported. (Only FAT (12/16/32) file system is supported.)
- Do not extract the USB device during operation (play, etc.).
- A USB device which requires additional program installation when you have connected it to a computer, is not supported.
- USB device: USB device that supports USB1.1.
- Regular back up is recommended to prevent data loss.
- If you use a USB extension cable, USB HUB or USB Multi-reader, the USB device may not be recognized.
- Some USB device may not work with this unit.
- Digital camera and mobile phone are not supported.
- iPod/USB Port of the unit cannot be connected to PC. The unit cannot be used as a storage device.
- When you connect a partitioned USB device into the unit, only the first partition is recognized on it.

Playing the iPod

You can enjoy the sound with your iPod. For details about iPod, refer to the iPod's User Guide.

Before connecting the iPod, turn this unit off and reduce the volume of this unit to its minimum.

1. Insert your iPod to the iPod/USB Port until it fits into place.

Your iPod is automatically turned on and recharging starts.

2. Press IPOD/USB.

"IPOD READY" appears for about 3 seconds and then the current playback status is displayed on the display window.

3. Operate your iPod by using the supplied remote control and controls on your iPod.

Remote control buttons	iPod buttons	Description
▶ (PLAY)	▶▶	Starts playback.
(PAUSE)	▶▶	Pauses playback.
■ (STOP)	-	Stops playback.
◀◀/▶▶ (SKIP)	◀◀/ ▶▶	During playback, press ◀◀ or ▶▶ to go to the next file or to return to the beginning of the current file. Press ◀◀ twice briefly to step back to the previous file.
◀◀/▶▶ (SCAN)	◀◀/ ▶▶	During playback, press and hold ◀◀ or ▶▶ and then release at a point you want.
DISC MENU	MENU	Returns to the upper menu in iPod mode.
^/v	Click wheel.	Moves to an item in the menu.

REPEAT	REPEAT	During playback, press REPEAT repeatedly to select a desired repeat mode. (OFF → RPT 1 → RPT AL → RANDOM)
--------	--------	---

! Note

- It works with all iPod models (except for the models produced before 2004) that have a dock connector.
- Compatibility with your iPod may vary depending on the type of your iPod.
- Depending on your iPod's software version, it may not be possible to control your iPod from the unit. We recommend installing the latest software version.
- Adjust the volume to a moderate level before you connect your iPod and this unit.
- If the unit occurs the lack of power supply, communication failure, or contact faulty, the iPod error message is displayed on the display window.
- Interference may happen depending on iPod devices.
- iPod touch and iPhone have any difference in operation other than iPod. You may need any additional control to use them with this unit. (e.g. "slide to unlock")
- Compatible iPod models
 - iPod classic
 - iPod nano (3rd, 4th, 5th, 6th generation)
 - iPod 5th generation
 - iPod touch (1st, 2nd, 3rd, 4th generation)
 - iPhone (3rd, 4th generation), iPhone 3GS
- If you have a problem with your iPod, please visit www.apple.com/support/ipod.

Controlling a TV with the Supplied Remote Control

You can control your TV using the buttons below.



By pressing	You can
(POWER)	Turn the TV on or off.
0-9 numerical buttons:	Selects numbered options in a menu or inputs letters in the keypad menu.
TV INPUT	Select the TV's source.
MUTE	Turns off the sound temporarily. Press the button again to restore the sound.
PR/CH /	Scan up or down through memorized channels.
VOL +/-	Adjust the volume of the TV.

Note

Depending on the unit being connected, you may not be able to control your TV using some of the buttons.

Setting up the remote to control your TV

You can operate your TV with the supplied remote control.

1. Turn the TV on.
2. Press TV on the remote control to enter the TV mode.



3. Press and hold TV for about 3 seconds until the TV button can be seen illuminated.



4. Press the manufacturer code for your TV with the numerical buttons (three digit code). See the manufacturer code list on the pages 38-43.
5. Press the ENTER () button to complete setting.

Depending on your TV, some or all buttons may not function on the TV, even after entering the correct manufacturer code. When you replace the batteries of the remote, the code number you have set may be reset to the default setting. Set the appropriate code number again.

Troubleshooting

Symptom	Cause	Solution
The Power does not turned on.	The power cord is disconnected.	Plug the power cord into the wall outlet securely.
No sound.	<ul style="list-style-type: none"> The speaker wires are disconnected. The speaker volume is adjusted too low. The MUTE button is pressed to ON. The selected decoding mode is not matched to the input signal format. Incorrect selection of input source. Incorrect connections between the components. 	<ul style="list-style-type: none"> Check the speaker connections. Adjust the speaker volume. Press the MUTE button to cancel the muting effect. Select the available decoding mode. Select the desired input source correctly. Make connections correctly.
Radio stations can't be tuned in properly.	<ul style="list-style-type: none"> The antenna is positioned or connected poorly. The signal strength of the radio station is too weak. No stations have been preset or preset stations have been cleared (when tuning by scanning preset channels). 	<ul style="list-style-type: none"> Check the antenna connection and adjust its position. Tune to the station manually. Preset some radio stations, see page 28 for details.
Preset stations cannot be received.	<ul style="list-style-type: none"> An incorrect station frequency has been memorized. The memorized stations are cleared. 	<ul style="list-style-type: none"> Memorize the correct station frequency. Memorize the stations again.
Poor FM reception.	<ul style="list-style-type: none"> No antenna is connected. The antenna is not positioned for the best reception. 	<ul style="list-style-type: none"> Connect the antenna. Change the position of the antenna.

<p>The remote control doesn't work well / at all.</p>	<ul style="list-style-type: none"> • The remote control is not pointed directly at the unit. • The remote control is too far from the unit. • There is an obstacle in the path between the remote control and the unit. • The battery in the remote control are flat. • The correct input mode (RECEIVER, PLAYER, or TV mode) is not selected on the remote control. 	<ul style="list-style-type: none"> • Point the remote directly at the unit • Use the remote within 23 feet (7m) of the unit. • Remove the obstacle. • Replace the batteries with new ones. • Select the correct input mode (RECEIVER, PLAYER, or TV mode). For details, see "About the remote control modes" on the page 7.
---	---	--

Manufacturer code list

Choose a manufacturer code from this list.

Manufacturer	Code Number	Manufacturer	Code Number
ADMIRAL	137, 204	BRIONVEGA	204
ADYSON	159, 219	BSR	144
AKAI	009, 010, 038, 108, 132, 133, 135, 139, 140, 156, 174, 175	BUSH	009, 136, 139, 144, 232
AKURA	064, 086, 108, 110, 155, 171	CENTURY	165, 204
ALBA	009, 060, 064	CGE	139, 165, 210
ALLSTAR	108	CIE	025, 108, 170
AMSTRAD	006, 025, 157	CLATRONIC	009, 010, 064, 108, 144, 149, 159, 164, 165, 171, 185
AMWAY	108	CLARIVOX	031
ANITECH	010, 049, 108, 185, 219	CONDOR	108, 149, 191
ANTECNO	064	CONIC	219
ARC EN CIEL	173, 179, 239	CONTEC	171, 222
ASA	087, 102, 108, 235, 236	CONTINENTAL EDISON	173, 179, 225, 239
ASBERG	185	COSMOS	108
ASORA	171	CROSLEY	165 204
ATLANTIC	089, 197	CROWN	084, 085, 086, 108, 144, 171, 185
AUDIOSONIC	085	CS-ELECTRONICS	064
AUTOVOX	159, 163, 197	DAEWOO	051, 108, 120, 127, 170
BANK	232	DANSAI	010, 219
BEKO	045, 085, 086, 108, 250	DE GRAAF	108 134
BESTAR	086	DECCA	070, 108, 159, 161, 162, 184, 189, 190, 206
BLAUPUNKT	091, 092, 096, 097, 098, 099, 210, 253	DECCAVIDEO	108
BONDSTEC	163	DUAL	233
BOSCH	210	DUMONT	204
BRANDT ELECTRONIQUE	173, 179, 225, 239	ELBE	058, 144, 157, 160, 192, 246

Manufacturer	Code Number	Manufacturer	Code Number
ELBIT	108, 248	FUJITSU GENERAL	088, 159, 197
ELECTROVENDA	108	FUNAI	010
ELEKTRONIKA	108	GALAXIS	108, 185
ELIN	108	GALERIA	171
ELITE	064, 149	GBC	137, 144, 171
ELMAN	144	GEC	011, 108, 129, 147, 159, 189
ELTA	010, 171	GELOSO	064, 137, 144, 164, 171
EMERSON	108, 204	GENERAL	171
ESC	108	GENERAL TECHNIC	171
ETRON	133	GOLDHAND	159, 171
EUROPHON	144, 159	GOLDSTAR	001, 050, 108, 110, 136, 144, 159, 163, 166, 171, 191, 219, 237
EXPERT	089	GOODMANS	009, 064, 108, 109, 110, 120, 159, 170, 171
FENNER	171	GORENJE	086
FERGUSON	078, 079, 080, 160, 182, 195, 198, 199, 200, 201, 202	GPM	010, 064
FINLANDIA	194, 195	GRANADA	027, 105, 108, 111, 121, 134, 140, 159, 162, 167, 187, 194, 195, 238
FINLUX	008, 087, 102, 104, 105, 107, 108, 140, 144, 159, 161, 174, 189, 235, 236	GRUNDIG	091, 092, 093, 094, 095, 097, 098, 100, 101, 172, 232, 238
FIRST-LINE	144	HCM	010, 108, 159, 171
FISHER	086, 208, 222, 233	HIFIVOX	173, 179, 239
FORMENTI	108, 149	HINARI	010, 064, 108, 133, 171
FRABA	108	HIT	204
FRONTECH	136, 171, 220	HITACHI	011, 013, 015, 017, 021, 022, 023, 024, 028, 029, 030, 035, 039, 040, 041, 048, 053, 054, 055, 056, 057, 120, 127, 128, 129, 134, 135, 140, 143, 145, 147, 151, 156, 159, 173, 193, 219
FUBA	073, 109	HYPER	009, 159, 163, 171

Manufacturer	Code Number	Manufacturer	Code Number
ICE	009, 010, 064, 108, 171	LENCO	108 170
IMPERIAL	043, 049, 108, 139, 144, 154, 165, 255	LG	001 (Default code), 050, 108, 110, 136, 144, 159, 163, 166, 171, 191, 219, 237
INGERSOLL	171	LIESENKOTTER	108, 210
INNO HIT	159, 189, 237	LIFETEC	010, 064, 108, 170
INTERBUY	010	LOEWE	109, 113, 204, 205
INTERCORD	233	LOGIK	070, 227
INTERFUNK	108, 109, 113, 130, 133, 134, 135, 137, 141, 146, 147, 148, 165, 179, 210	LUMA	137, 197
INTERVISION	010, 086, 108, 132, 144, 166	LUXOR	102, 104, 132, 133, 134, 135, 138, 140, 143, 145, 153, 156, 174, 186, 237
IRRADIO	163, 235, 237	M ELECTRONIC	103, 104
ITC	144, 159	MAGNADYNE	163, 164, 204
ITS	009, 010, 064, 171	MAGNAFON	199
ITT	141, 151, 186	MAGNASONIC	108
JVC	009, 169	MARANTZ	108
KAPSCH	089, 147, 148, 197	MARSHAL	064
KARCHER	084, 108	MATSUI	009, 016, 025, 060, 061, 062, 063, 070, 108, 131, 136, 152, 154, 159, 171, 172
KATHREIN	109	MERRIT	132
KAWA	009	METZ	047, 092, 097, 098, 100, 101, 108, 204, 207, 254
KENDO	060, 108, 137, 157	mitsubishi	075, 076, 077, 097, 113, 204, 222, 224, 240
KENNEDY	197	MIVAR	044, 159, 235
KNEISSEL	108	MNARTT	007
KORTING	086, 204, 209	MTC	086, 109, 134
KUBA	233	MULTITECH	136, 159, 171, 185
KUBAELECTRONIC	233	MURPHY	232
KURA	134	NAONIS	137

Manufacturer	Code Number	Manufacturer	Code Number
NECKERMANN	037, 059, 060, 092, 098, 100, 101, 108, 109, 113, 115, 118, 119, 134, 135, 137, 143, 157, 159	PAEL	235
NEI	064, 108	PANASONIC	002, 003, 005, 167, 168, 229
NIKKAI	219	PATHE CINEMA	144
NIKKO	108	PHILCO	090, 108, 139, 144, 148, 165, 204
NOBLIKO	232, 235	PHILIPS	065, 066, 067, 068, 069, 092, 108, 109, 111, 112, 114, 115, 116, 119, 122, 123, 124, 125, 193, 212, 251, 252
NOGAMATIC	173, 179, 239	PIONEER	193
NOKIA	014, 019, 032, 102, 103, 104, 108, 132, 133, 134, 135, 138, 140, 141, 145, 146, 147, 148, 156, 174	PRANDONI-PRINCE	137, 235
NORDMENDE	129, 173, 179, 180, 181, 193, 195, 225, 226, 228, 239	PRIMA	219
NORMN	108	PRO VISION	108
NOVA	087	PROFEX	108, 136, 171
OCEANIC	032, 103, 104, 135, 140, 156	PROFITRONIC	108
OKANO	108	QUELLE	002, 010, 014, 019, 025, 038, 059, 060, 072, 084, 086, 087, 088, 092, 097, 098, 100, 101, 102, 175,
ONWA	009, 010, 064	RADIOLA	108
ORAVA	108	RADIOTONE	010, 085, 108, 171
ORBITER	086	REDIFUSSION	187
ORION	025, 059, 060, 061, 062, 064, 070, 108, 110, 118, 219,	REVOX	109
OSAKE	106	REX	088, 089, 137, 157, 158, 164, 197, 246, 247
OTTO-VERSAND	002, 005, 009, 014, 059, 060, 081, 082, 083, 085, 092, 097, 098, 100, 101, 108, 109, 111, 113	RFT	064, 085, 135, 204

Manufacturer	Code Number	Manufacturer	Code Number
RITAR	138	SILVER	010, 064
ROADSTAR	108	SINGER	108, 164, 204
ROSITA	171	SINUDYNE	118, 131
SABA	079, 146, 147, 173, 179, 181, 193, 195, 225, 226, 239	SMARAGO	172
SAISHO	025, 060, 070, 136, 159	SOLAVOX	133
SAKIO	171	SONOLOR	140 156
SALORA	019, 032, 103, 104, 132, 133, 134, 135, 137, 138, 140, 142, 143, 145, 150, 156, 174, 237, 241	SONTEC	108
SAMBERS	235	SONY	072, 074, 211, 212, 213, 214, 215, 216, 217, 222
SAMSUNG	004, 010, 050, 086, 108, 117, 126, 171, 220, 237	SPECTRA	170
SANY	193	STARLITE	108, 171
SANYO	014, 018, 019, 020, 032, 034, 071, 086, 087, 189, 218, 221, 222, 223	STARLUX	171
SCHNEIDER	009, 064, 088, 108, 133, 141, 159, 163, 233	STERN	088, 089, 137, 157, 197
SEG	010, 064, 108, 144, 159, 165, 171, 185, 219	SUNSTAR	108, 171
SEI-SINUDYNE	025, 108, 204, 212	SUPERTECH	108, 139, 152, 171
SELECO	088, 089, 137, 157, 197, 222	TADISTAR	108
SENTRA	064, 133	TASHIKO	108
SHARP	081, 082, 083, 222	TASHIKO	159, 218
SHINTOM	108	TEC	108, 139, 144, 159, 170, 171
SHINTOSHI	108	TECHLINE	185
SHIVAKI	108	TECHNISAT	108, 165
SIAREM	204	TECNISON	108, 171
SIEMENS	092, 096, 097, 098, 100, 101, 108, 210, 218, 219, 221	TEKON	171
SIESTA	085	TELEAVIA	173, 178, 179, 225, 239

Manufacturer	Code Number	Manufacturer	Code Number
TELEFUNKEN	079, 177, 179, 181, 193, 195, 200, 210	UHER	089, 108, 109, 149, 185, 197, 233
TELEOPTA	171	ULTRAVOX	108, 164, 185, 204
TELERNT	109	UNIVOX	204
TELETECH	165, 171	VESTEL	108
TELETEXT	115	VIDEOSAT	165
TELETON	088	VIDEOTON	178, 193
TELETON	089, 134, 159, 197	VIDEOWAY	230
TENSAI	064, 108, 144, 149, 171, 191	VISION	108, 149
TENSON	171	VOXSON	137, 204
TESLA	204	WALTHAM	178
THOMSON	052, 078, 079, 134, 173, 178, 179, 181, 193, 195, 225, 239	WATSON	064, 108, 149, 171
THORN	011, 014, 016, 018, 026, 028, 066, 072, 075, 087, 097, 102, 108, 116, 135, 141, 145, 146, 160	WEGA	208, 222
THORN-FERGUSON	160, 188, 200, 227	WHITE WESTINGHOUSE	108 110 149
TOSHIBA	012, 016, 026, 036, 037, 222, 232	YOKO	010, 064, 108, 136, 144, 159, 164, 170, 171
TOWADA	144, 185	ZANUSSI	137, 197
TRISTAR	010, 064	ZENITH	231
TRIUMPH	025, 219, 236		

Trademarks and Licenses



HDMI, the HDMI logo and High-Definition Multimedia Interface are trademarks or registered trademarks of HDMI licensing LLC.



Manufactured under license from Dolby Laboratories. Dolby, Pro Logic, and the double-D symbol are trademarks of Dolby Laboratories.



Manufactured under licence under U.S. Patent #'s: 5,451,942; 5,956,674; 5,974,380; 5,978,762; 6,487,535 & other U.S. and worldwide patents issued & pending. DTS and the Symbol are registered trademarks & DTS Digital Surround and the DTS logos are trademarks of DTS, Inc. Product includes software. © DTS, Inc. All Rights Reserved.



“Made for iPod” means that an electronic accessory has been designed to connect specifically to iPod and has been certified by the developer to meet Apple performance standards.


“Works with iPhone” means that an electronic accessory has been designed to connect specifically to iPhone and has been certified by the developer to meet Apple performance standards.

Apple is not responsible for the operation of this device or its compliance with safety and regulatory standards.

iPod is a trademark of Apple Inc., registered in the U.S. and other countries.

iPhone is a trademark of Apple Inc.

Specifications

General	
Power requirements	Refer to main label on the rear panel.
Power consumption	Refer to main label on the rear panel.
Dimensions (W x H x D)	Approx. 430 x 60 x 243.5 mm (16.9 x 2.4 x 9.2 inches)
Net Weight (Approx.)	2.9 kg (6.4 lbs)
Operating temperature	5 °C to 35 °C (41 °F to 95 °F)
Operating humidity	5 % to 90 %
Bus Power Supply (USB)	DC 5 V  1 A

Inputs/Outputs	
HDMI IN/OUT (video/audio)	19 pin (Type A, HDMI™ Connector)
ANALOG AUDIO IN	2.0 Vrms (1 kHz, 0 dB), 600 Ω, RCA jack (L, R) x 1
DIGITAL IN (OPTICAL)	3 V (p-p), Optical jack x 2
DIGITAL IN (COAXIAL)	3 V (p-p), Coaxial jack x 1
PORT. IN	0.5 Vrms (∅ 3.5 mm stereo jack)

Tuner	
FM Tuning Range	87.5 to 108.0 MHz or 87.50 to 108.00 MHz

Amplifier	
Power output (4 Ω/ 3 Ω), (RMS), THD 10 %	
Total	1100 W
Front	180 W x 2
Center	180 W
Rear	180 W x 2
Sub-Woofer	200 W (Passive)

Speakers			
Front speaker (Left/ Right)			
Type	2 Way 2 speaker	Max. Input power	360 W
Impedance Rated	4 Ω	Net Dimensions (W x H x D)	94 x 211 x 83 mm (3.7 x 8.3 x 3.3 inches)
Input Power	180 W	Net Weight	0.7 kg (1.5 lbs)
Rear speaker (Left/ Right)			
Type	1 Way 1 speaker	Max. Input power	360 W
Impedance Rated	4 Ω	Net Dimensions (W x H x D)	94 x 182 x 83 mm (3.7 x 7.2 x 3.3 inches)
Input Power	180 W	Net Weight	0.61 kg (1.34 lbs)
Center speaker			
Type	2 Way 3 speaker	Max. Input power	360 W
Impedance Rated	4 Ω	Net Dimensions (W x H x D)	327 x 99 x 76 mm (12.9 x 3.9 x 3.0 inches)
Input Power	180 W	Net Weight	1.21 kg (2.67 lbs)
Subwoofer			
Type	1 Way 1 speaker	Max. Input power	400 W
Impedance Rated	3 Ω	Net Dimensions (W x H x D)	190 x 385 x 318 mm (7.5 x 15.2 x 12.5 inches)
Input Power	200 W	Net Weight	5 kg (11 lbs)

- Design and specifications are subject to change without notice.

Maintenance

Handling the Unit

When shipping the unit

Please save the original shipping carton and packing materials. If you need to ship the unit, for maximum protection, re-pack the unit as it was originally packed at the factory.

Keeping the exterior surfaces clean

- Do not use volatile liquids such as insecticide spray near the unit.
- Wiping with strong pressure may damage the surface.
- Do not leave rubber or plastic products in contact with the unit for a long period of time.

Cleaning the unit

To clean the receiver, use a soft, dry cloth. If the surfaces are extremely dirty, use a soft cloth lightly moistened with a mild detergent solution. Do not use strong solvents such as alcohol, benzine, or thinner, as these might damage the surface of the unit.

Maintaining the Unit

The unit is a high-tech, precision device. If the optical pick-up lens and disc drive parts are dirty or worn, the picture quality could be diminished. For details, please contact your nearest authorized service center.

