



GB220

Some of the contents in this manual may differ from your phone depending on the software of the phone or your service provider.



Bluetooth QD ID B015474

GB220 User Guide - English

This guide will help you understand your new mobile phone. It will provide you with useful explanations of features on your phone.

Some of the contents in this manual may differ from your phone depending on the software of the phone or your service provider.

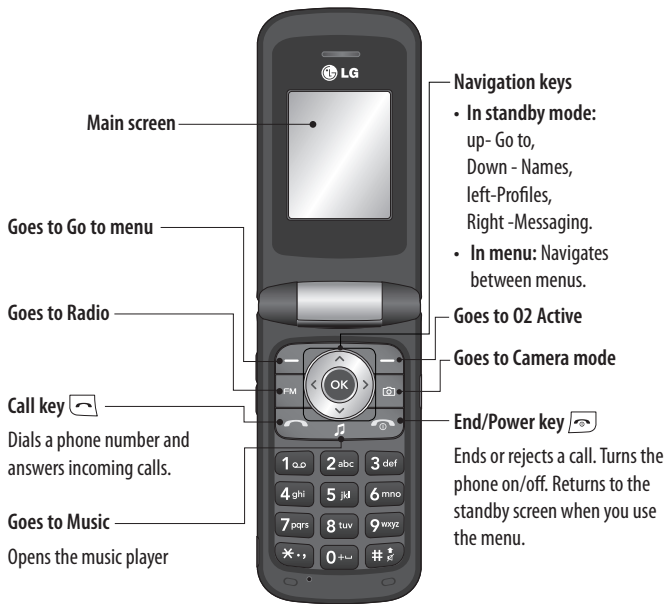


Disposal of your old appliance

- 1 When this crossed-out wheeled bin symbol is attached to a product it means the product is covered by the European Directive 2002/96/EC.
- 2 All electrical and electronic products should be disposed of separately from the municipal waste stream via designated collection facilities appointed by the government or the local authorities.
- 3 The correct disposal of your old appliance will help prevent potential negative consequences for the environment and human health.
- 4 For more detailed information about disposal of your old appliance, please contact your city office, waste disposal service or the shop where you purchased the product.



Getting to know your phone



Volume key / Side keys

- 1) In standby mode (Opened) :
Volume adjustment
- 2) In standby mode (closed): Short press - The sub LCD backlight on.
Long press (Down key only) -Go to Self Camera mode and you can take a photo.
- 3) During a call : Earpiece volume adjustment
- 4) During playing MP3 music: Audio volume



Charger, cable slot, Handsfree connector

Memory card slot



Installing a memory card

Lift the memory card cover and insert a micro SD card with the golden contact area facing downwards. Close the memory card cover so that it clicks shut.

To remove the memory card, gently push it as shown in the diagram.

Note: A memory card is an optional accessory.

Formatting the memory card

Press **Menu** and Select **Settings**.

Choose **Memory manager**, select **External memory** and press **Format**.

WARNING: When you format your memory card, all the content will be wiped. If you do not want to lose the data on your memory card, back it up first.

Installing the SIM Card and Charging the Battery

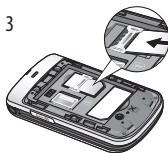
Installing the SIM Card

When you subscribe to a cellular network, you are provided with a plug-in SIM card loaded with your subscription details, such as your PIN, any optional services available and many others.

Important! > The plug-in SIM card and its contacts can be easily damaged by scratches or bending, so be careful when handling, inserting or removing the card. Keep all SIM cards out of the reach of small children.

Illustrations

- 1 Open battery cover
- 2 Remove the battery
- 3 Insert your SIM
- 4 Insert the battery
- 5 Close the battery cover
- 6 Charge your battery



WARNING: Do not remove the battery when the phone is switched on, as this may damage the phone.

Menu map

Messaging

1. Create message
2. Inbox
3. My mailbox
4. Drafts
5. Outbox
6. Sent items
7. Saved itmes
8. Emoticons
9. Message settings

Contacts

1. Names
2. Settings
3. Groups
4. Speed dials
5. Service dial numbers
6. Own number
7. My business card

Call log

1. Call log
2. Missed calls
3. Received calls
4. Dialed numbers
5. Call duration
6. Packet data counter
7. Call costs

Settings

1. Profiles
2. Display
3. Date & Time
4. Connectivity
5. Call
6. Phone
7. Network
8. Internet profiles
9. Access points
10. Packet data Conn.
11. Security
12. Memory manager
13. Restore factory settings

Gallery

1. My memory card
2. My images
3. My sounds
4. My videos
5. My games & apps
6. Others

Media

1. Camera
2. Video
3. Music
4. FM Radio
5. Voice recorder

Organiser

1. Alarm clock
2. Calendar
3. To-do list
4. Notes
5. Secret notes
6. Calculator
7. Stopwatch
8. Date finder
9. Converter
10. World time
11. Go to
12. O2
13. Settings

Games & Apps


1. My games & apps
2. Settings

O2 Active

1. Home
2. Bookmarks
3. Last web address
4. Settings
5. Go to address
6. Saved pages


Calls

Making a call


- 1 Key in the number using the keypad. To delete a digit press **CLR**.
- 2 Press **OK** to initiate the call.
- 3 To end the call, press .

TIP! To enter + when making an international call, press and hold 0.

Making a call from your contacts

- 1 Select **Names** from Contacts.
- 2 Using the keypad, enter the first letter of the contact you want to call. For example, for **Office**, Press 6 three times to select the first character, "O"
- 3 Select **Call** or press  to initiate the call.

Answering and rejecting a call

When your phone rings, press **Accept** or press  to answer the call.

You can control the volume by pressing the side keys.

Press  or select **Reject** to reject the incoming call.

TIP! You can change the settings on your phone to answer your calls in different ways. Press **Menu**, select **Settings**, and choose Call. Select Answer mode and choose from Press **send key**, Open flip and Press **any key**.

Speed dialling

You can assign a speed dial number to a contact you call frequently.

Viewing your Call history

You can check the record of missed, received, and dialled calls only if the network supports the Calling Line Identification (CLI) within the service area.

Changing the call settings

You can set the menu relevant to a call. Press **Menu**, select **Settings** and choose **Call**.

- **Call divert** - Choose whether to divert your calls.
- **Call barring** – Select when you would like calls to be barred.
- **Fixed dial number** – Choose a list of numbers that can be called from your phone. You'll need your PUK2 code from your operator. Only numbers included in the fixed dial list can be called from your phone.

- **Call waiting** - Be alerted when you have a call waiting. (Depends on your network provider.)
- **Call reject** - Set the rejected call list.
- **Send my number** - Choose whether your number will be displayed when you call someone. (Depends on your network provider.)
- **Auto redial** - Choose **On** or **Off**.
- **Answer mode** - Choose whether to answer the phone using any key or send key only.
- **Free call timer** - Choose whether it shows or not.
- **Minute minder** - Select **On** to hear a tone every minute during a call.
- **BT answer mode** - Set **Hands-free** or **Handset**.
- **Save new number** - Choose **Yes** or **No**.

Contacts

Searching for a contact

- 1 Select **Names** from **Contacts**.
- 2 Using the keypad enter the first letter of the contact you want to call.
- 3 To scroll through the contacts use the up and down arrows.

Adding a new contact

- 1 Press **Contacts** and choose **Names**. Then press **Options-Add new contact**.
- 2 Enter all the information you have in the fields provided and select **Options-Done**.

Adding a contact to a group

You can save your contacts into groups, for example, keeping your work colleagues and family separate. There are a number of groups including **Family**, **Friends**, **Colleague**, **VIP**, **Group1**, **Group2** and **Group3** already set up on the phone.

Messaging

Your GB220 includes functions to send text messages and multimedia messages and **Email**, as well as the network's service messages.

Sending a message

- 1 Press **Menu**, select **Messaging**, and choose **Create message - Message**.
- 2 A new message editor will open. The message editor combines **Text message** and **Multimedia messages** into one intuitive and easy to switch between editor. The default setting of the message editor is text messages.
- 3 Enter your message.
- 4 Choose **Options-Insert** to add an **Image**, **Video clip**, **Sound clip**, **Schedule**, **Business card**, **Note**, **Text field**, **To do**, or a **Text template**.
- 5 Press **Options - Send key**.

Setting up your email

You can stay in touch on the move using email on your GB220. It's quick and simple to set up a POP3 or IMAP4 email account.

- 1 Press **Menu**, select **Messaging**, and choose **Message Settings**.
- 2 Select **Email** then **Email accounts**.
- 3 Press **Add** then set the **Email** account.

Sending an email using your new account

To send/receive an email, you should set up an email account.

- 1 Select **Menu**, select **Messaging** and choose **Create message**.
- 2 Choose **Email** and a new email will open.
- 3 Write a subject.
- 4 Enter your message.
- 5 Press options, select **Insert** to add an **Image**, **Video Clip**, **Sound Clip**, **Business card**, **Schedule** or a **Note**.
- 6 Press **Send** to and enter the recipient's address or press **Options** and select **Insert-Contact**. to open your contacts list.
- 7 Press **Send** and your email will be sent.

Entering text

You can enter alphanumeric characters using the phone's keypad. The following text input methods are available in the phone: T9 predictive mode, ABC manual mode and 123 mode.

Note: Some fields may allow only one text input mode (e.g. telephone number in address book fields).

T9 predictive mode

T9 predictive mode uses a built-in dictionary to recognise words you're writing based on the key sequences you press. Simply press the number key associated with the letter you want to enter, and the dictionary will recognise the word once all the letters are entered.

ABC manual mode

This mode allows you to enter letters by pressing the key labeled with the required letter once, twice, three or four times until the letter is displayed.

123 mode

Type numbers using one keystroke per number. You can also add numbers while remaining in letter modes by pressing and holding the desired key.

Message folders

Press **Menu**, select **Messaging**. The folder structure used on your GB220 is fairly self-explanatory.

- **Create message** - Allows you to create new messages.
- **Inbox** - All the messages you receive are placed into your Inbox.

- **My mailbox** - Contains all your email messages.
- **Drafts** - If you don't have time to finish writing a message, you can save what you have done so far here.
- **Outbox** - This is a temporary storage folder while messages are being sent.
- **Sent items** - All the messages you send are placed into your **Sent folder**.
- **Saved items** - A list of useful messages, already written for a quick reply.
- **Emoticons** - Liven up your messages using emoticons.

Music

Your GB220 has a built-in **Music** player so you can play all your favourite music.

Playing a song

- 1 Press **Menu** and select **Media**, then choose **Music**.
- 2 Choose **All tracks** then select the song you want to play.
- 3 Select **⏸** to pause the song.
- 4 Select **⏭** to skip to the next song.
- 5 Select **⏮** to skip to the previous song.

- 6 Select **Back** to stop the music and return to the Music player menu.


Creating a playlist

You can create your own playlists by choosing a selection of songs from the **All songs** folder.

- 1 Press **Menu** and select **Media**.
- 2 Choose Music, then select **playlist**.
- 3 Press **Add** enter the playlist name and press **Save**.
- 4 The **All tracks** folder will show. Select all of the songs that you would like to include in your playlist by scrolling to them and selecting .
- 5 Select **Done** to store the playlist.


Camera

Taking a quick photo

- 1 Select Menu Select **Media** to open the viewfinder.
- 2 Holding the phone and, point the lens towards the subject of the photo.
- 3 Position the phone so you can see the subject of your photo.
- 4 Press **Centre**  key to take a photo.

Video camera

Shooting a quick video

- 1 In standby screen, select **Menu** and select **Media**.
- 2 Choose **Video**.
- 3 Point the camera lens towards the subject of the video.
- 4 Press  to start recording.
- 5 Rec will appear in the bottom left corner of the viewfinder and a timer will show the length of your video.
- 6 Select stop to stop recording.

FM radio


Using the FM radio

Your LG GB220 has an **FM radio** feature so you can tune into your favourite stations and listen on the move.

Listening to the radio

- 1 Press **Menu** and select **Media**, then choose **FM radio**.
- 2 Select the channel number of the station you would like to listen to.

Recording the Radio

- 1 Press center key during listening to the **FM Radio**.
- 2 The recording time is displayed on your phone. If you want to stop the recording, press the **Centre**  **key**. If recording is done, the recorded contents will be saved in **Gallery** as mp3 file.
- 3 When the recording is done, select **Option** and then choose from **Play, Delete, Sound edit File** or **Send via**.

Note: If you stay in an area with bad radio reception, you may find difficulty in listening to the **Radio**.

So, we recommend you insert Ear-mic into Handsfree connector in order to listen to the **Radio** and keep the good radio reception.

Voice recorder

Use your **Voice recorder** to record voice memos or other sounds.

Gallery

You can store any **Media files** into your phone's memory so that you have easy access to all of your images, sounds, videos, others and games. You can also save your files to a memory card. The advantage of using a memory card is that you can free up space on your phone's memory. All your multimedia files will be saved in **Gallery**. Press **Menu** then select **Gallery** to open a list of folders.

My images

Images contains a folder of default images on your phone, images downloaded by you, and images taken on your phone's camera.

My sounds

The **Sounds folder** contains the Default sounds, your voice recordings, and sound files downloaded by you. From here you can manage, send, or set sounds as ringtones.

My videos

The **Videos folder** shows the list of downloaded videos and videos you have recorded on your phone.

Others

From the **Others menu**, you can view the files that are not saved in the **Images**, **Sounds** or **Videos folder**.

Games and Apps

Your GB220 comes with preloaded games to keep you amused when you have time to spare. If you choose to download any additional games or applications they will be saved into this folder.

My memory card

If you've inserted a memory card, it will be displayed as a folder within My stuff.

Organiser

Using the calendar

When you enter this menu, a calendar appears. A square cursor is located on the current date.

You can move the cursor to another date using the navigation keys.

Adding an item to your to do list

You can view, edit and add tasks to do.

Adding a memo

You can register your own memos here.

Setting your alarm

You can set up to 5 alarm clocks to go off at a specified time.

Using your calculator

The calculator provides the basic arithmetic functions: addition, subtraction, multiplication and division.

Using the stopwatch

This option allows you to use the function of a stopwatch.

Converting a unit

This converts many measurements into a unit you want.

Adding a city to your world time

You can add a required city to the list of world clock. You can also check the current time of Greenwich Mean Time (GMT) and major cities around the world.

Go to

It helps you to go the directly you search for. You can set the item as Go to.

SIM services

This feature depends on SIM and the network services. In case the SIM card supports SAT (i.e. SIM Application Toolkit) services, this menu will be the operator specific service name stored on the SIM card.

Web

Accessing the Web

You can launch the wap browser and access the homepage of the activated profile on Web settings. You can also manually enter an URL address and access the associated wap page.

- 1 Press **Menu** and select **O2 Active**.
- 2 To access the Web homepage directly, select **Home**. Alternately, select **Go to address** and type in your desired URL.

Phone Software update

LG Mobile Phone Software upgrade in web site

For more information and using this function, Please visit LGmobile.com site

path: <http://www.lgmobile.com> - select country – Products menu - Manual & software menu

This Feature allows you to upgrade your software to the latest version and conveniently on the internet without needing to visit our service center.

As the mobile phone software upgrade requires the user's full attention for the duration of the upgrade process, please be sure to check any instructions and notes that appear at each step before proceeding. Please note that removing the USB data communication cable or battery during the upgrade may seriously damage you mobile phone.

As the manufacturer takes no responsibility for loss of data during the upgrade process, you are advised to note down any important information in advance for safekeeping.

Connectivity

Changing your connectivity settings

Your connectivity settings have already been set up by your network operator, so you can enjoy your new phone from switch on. If you want to change any settings, use this menu. You can configure the network setting and data access profiles in this menu.

- **Bluetooth** - Setup your GB220 for Bluetooth® use. You can adapt your visibility to other devices or search through devices your phone is paired with.
- **USB connection** - Choose **Data service** and synchronise your GB220 using the LG PC Suite software to copy files from your phone. If you have a memory card inserted, select **Mass storage** to use your phone in the same way as you would use a USB stick. Connect to your computer and drag and drop files to the GB220 removable device folder.

Note: To use the USB mass storage function, you will need to insert an external memory card in your phone.

Changing your Bluetooth settings

- 1 Press **Menu** and select **Settings** - **Connectivity**. Choose **Bluetooth**.
- 2 Choose **Settings**. Make changes to your :
 - **My phone's visibility** - Choose whether to Show or Hide your device to others.
 - **My phone's name** - Enter a name for your LG GB220.
 - **Supported services** - Shows what it supports.
 - **My address** - View your Bluetooth address.

Pairing with another Bluetooth device

By pairing your GB220 and another device, you can set up a passcode protected connection. This means your pairing is more secure.

- 1 Check your Bluetooth is **On** and **Visible**. You can change your visibility in the **Bluetooth settings** menu, by selecting **My visibility**, then **Show**.
- 2 Select **Active device** from the **Bluetooth** menu and choose **New**.
- 3 Your GB220 will search for devices. When the search is completed **Add** and **Refresh** will appear on screen.
- 4 Choose the device you want to pair with, select **Add** and enter the passcode then choose OK key.
- 5 Your phone will then connect to the other device, on which you should enter the same passcode.
- 6 Your passcode protected Bluetooth connection is now ready.

Installing LG PC Suite on your computer

- 1 Go to www.lgmobile.com and choose Europe first and then your country.
- 2 Choose Products menu, select Manual & Software and click Go to Manual & S/W

download section. Click Yes and LG PC Suite installer will then appear. (Windows XP, Windows Media Player and more).

- 3 Select the language you would like the installer to run in and click OK.
- 4 Follow the instructions on screen to complete the LG PC Suite Installer wizard.
- 5 Once installation is complete, the LG PC Suite icon will appear on your desktop.

Settings

Changing your date & time

You can set functions relating to the date and time.

Changing the Profiles

You can personalise each profile setting.

- 1 Choose the profile you want and select **Personalize**.
- 2 For the Silent and Vibrate only profiles, you can activate only.

Using flight mode

Use this function to switch the flight mode On or Off. You will not be able to make calls, connect to the internet, send messages when Flight mode is switched On.

Changing your display settings

You can change the settings for the phone display.

Changing your shortcuts settings

You can change the shortcuts of 4 navigation keys.

Changing your security settings

Change your security settings to keep your GB220 and the important information it holds protected.

- **PIN code request** - Choose a PIN code to be requested when you turn your phone on.
- **Handset lock** - Choose a security code to lock your phone **When switching on, If SIM changed, Immediate or None**.
- **Change codes** - Change your Security code, PIN2 code, or ATMT code.

Resetting your phone

Use **Restore factory settings** to reset all the settings to their factory definitions. You need the security code to activate this function.

Viewing memory status

You can use the memory manager to determine how each memory is used and see how much space is available: **Common**, **Reserved**, **SIM card**, and **External memory**.

Please read these simple guidelines. Not following these guidelines may be dangerous or illegal.

Guidelines for safe and efficient use

Exposure to radio frequency energy Radio wave exposure and Specific Absorption Rate (SAR) information

This mobile phone model GB220 has been designed to comply with applicable safety requirements for exposure to radio waves. These requirements are based on scientific guidelines that include safety margins designed to assure the safety of all users, regardless of age and health.

- The radio wave exposure guidelines employ a unit of measurement known as the Specific Absorption Rate, or SAR. Tests for SAR are conducted using standardised methods with the phone transmitting at its highest certified power level in all used frequency bands.
- While there may be differences between the SAR levels of various LG phone models, they are all designed to meet the relevant guidelines for exposure to radio waves.
- The SAR limit recommended by the International Commission on Non-Ionizing Radiation Protection (ICNIRP) is 2W/kg averaged over 10g of tissue.

- The highest SAR value for this model phone tested by DASY4 for use close to the ear is 1.14 W/kg(10g) and when worn on the body is 0.757 W/kg(10g).
- SAR data information for residents in countries/regions that have adopted the SAR limit recommended by the Institute of Electrical and Electronics Engineers (IEEE), which is 1.6 W/kg averaged over 1g of tissue.

Product care and maintenance

WARNING

- Only use batteries, chargers and accessories approved for use with this particular phone model. The use of any other types may invalidate any approval or warranty applying to the phone, and may be dangerous.
- Do not disassemble this unit. Take it to a qualified service technician when repair work is required.
 - Keep away from electrical appliances such as TVs, radios, and personal computers.
 - The unit should be kept away from heat sources such as radiators or cookers.
 - Do not drop.

Guidelines for safe and efficient use (Continued)

- Do not subject this unit to mechanical vibration or shock.
- Switch off the phone in any area where you are required by special regulations. For example, do not use your phone in hospitals as it may affect sensitive medical equipment.
- Do not handle the phone with wet hands while it is being charged. It may cause an electric shock and can seriously damage your phone.
- Do not charge a handset near flammable material as the handset can become hot and create a fire hazard.
- Use a dry cloth to clean the exterior of the unit (do not use solvents such as benzene, thinner or alcohol).
- Do not charge the phone when it is on soft furnishings.
- The phone should be charged in a well ventilated area.
- Do not subject this unit to excessive smoke or dust.
- Do not keep the phone next to credit cards or transport tickets; it can affect the information on the magnetic strips.

- Do not tap the screen with a sharp object as it may damage the phone.
- Do not expose the phone to liquid or moisture.
- Use the accessories like earphones cautiously. Do not touch the antenna unnecessarily.

Efficient phone operation

Electronics devices

- Do not use your mobile phone near medical equipment without requesting permission. Avoid placing the phone over pacemakers, i.e. in your breast pocket.
- Some hearing aids might be disturbed by mobile phones.
- Minor interference may affect TVs, radios, PCs, etc.

Road safety

Check the laws and regulations on the use of mobile phones in the area when you drive.

- Do not use a hand-held phone while driving.
- Give full attention to driving.
- Use a hands-free kit, if available.

Guidelines for safe and efficient use (Continued)

- Pull off the road and park before making or answering a call if driving conditions so require.
- RF energy may affect some electronic systems in your vehicle such as car stereos and safety equipment.
- When your vehicle is equipped with an air bag, do not obstruct with installed or portable wireless equipment. It can cause the air bag to fail or cause serious injury due to improper performance.
- If you are listening to music whilst out and about, please ensure that the volume is at a reasonable level so that you are aware of your surroundings. This is particularly imperative when near roads.

Avoid damage to your hearing

Damage to your hearing can occur if you are exposed to loud sound for long periods of time. We therefore recommend that you do not turn on or off the handset close to your ear. We also recommend that music and call volumes are set to a reasonable level.

Blasting area

Do not use the phone where blasting is in progress. Observe restrictions, and follow the rules and regulations.

Potentially explosive atmospheres

- Do not use the phone at a refueling point.
- Do not use near fuel or chemicals.
- Do not transport or store flammable gas, liquid, or explosives in the same compartment of your vehicle as your mobile phone and accessories.

In aircraft

Wireless devices can cause interference in aircraft.

- Turn your mobile phone off before boarding any aircraft.
- Do not use it on the ground without permission from the crew.

Children

Keep the phone in a safe place out of the reach of small children.

It includes small parts which may cause a choking hazard if detached.

Guidelines for safe and efficient use (Continued)

Emergency calls

Emergency calls may not be available under all mobile networks. Therefore, you should never depend solely on the phone for emergency calls. Check with your local service provider.

Battery information and care

- You do not need to completely discharge the battery before recharging. Unlike other battery systems, there is no memory effect that could compromise the battery's performance.
- Use only LG batteries and chargers. LG chargers are designed to maximize the battery life.
- Do not disassemble or short-circuit the battery pack.
- Keep the metal contacts of the battery pack clean.
- Replace the battery when it no longer provides acceptable performance. The battery pack maybe recharged hundreds of times until it needs replacing.
- Recharge the battery if it has not been used for a long time to maximize usability.
- Do not expose the battery charger to direct sunlight or use it in high humidity, such as in the bathroom.
- Do not leave the battery in hot or cold places, this may deteriorate the battery performance.
- There is risk of explosion if the battery is replaced by an incorrect type.
- Dispose off used batteries according to the manufacturer's instructions. Please recycle when possible. Do not dispose as household waste.
- If you need to replace the battery, take it to the nearest authorized LG Electronics service point or dealer for assistance.
- Always unplug the charger from the wall socket after the phone is fully charged to save unnecessary power consumption of the charger.
- Actual battery life will depend on network configuration, product settings, usage patterns, battery and environmental conditions.

Accessories

There are various accessories for your mobile phone. These are detailed below.



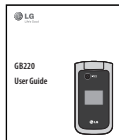
Charger



Battery



Stereo headset



User Guide

Learn more about
your GB220.

NOTE

- Always use genuine LG accessories. Failure to do this may invalidate your warranty.
- Accessories may be different in different regions. Please check with our regional service company or agent for further inquiries.

Technical data

General

Product name : GB220

System : GSM 850 / E-GSM 900 /
DCS 1800 / PCS 1900

Ambient Temperatures

Max : +55°C (discharging)
+45°C (charging)

Min : -10°C

Bluetooth QD ID B015474

Declaration of Conformity



LG Electronics

Suppliers Details

Name

LG Electronics Inc

Address

LG Electronics Inc, LG Twin Towers 20,
Yeouido-dong, Yeongdeungpo-gu, Seoul, Korea 150-721

Product Details

Product Name

GSM 850 / E-GSM 900 / DCS 1800 / PCS 1900 Quad band Terminal Equipment

Model Name

GB220

Trade Name

LG

C E 0168

Applicable Standards Details

R&TTE Directive 1999/5/EC

EN 301 489-01 V1.6.1, EN 301 489-07 V1.3.1, EN 301 489-17 V1.2.1
EN 301 511 V9.0.2
EN 50360:2001, EN62209-1:2006
EN 60950-1:2001
EN300328 V1.7.1

Supplementary Information

The conformity to above standards is verified by the following Notified Body(BABT)

BABT, Balfour House, Churchfield Road, Walton-on-Thames, Surrey, KT12 2TD, United Kingdom
Notified Body Identification Number : 0168

Declaration

I hereby declare under our sole responsibility that the product mentioned above to which this declaration relates complies with the above mentioned standards and Directives

Name

Issued Date

Seung Hyoun, Ji / Director 29. JULY, 2009

Signature of representative

European Standard Center
LG Electronics Logistics and Services B.V.
Veluwezoom 15, 1327 AE Almere, The Netherlands
Tel : +31 - 36 - 547 - 8940, Fax : +31 - 36 - 547 - 8794
e-mail : jacob @ lge.com

