

LG-C305 User Guide

Some of the content of this manual may differ from your phone depending on the software of the phone or your service provider.

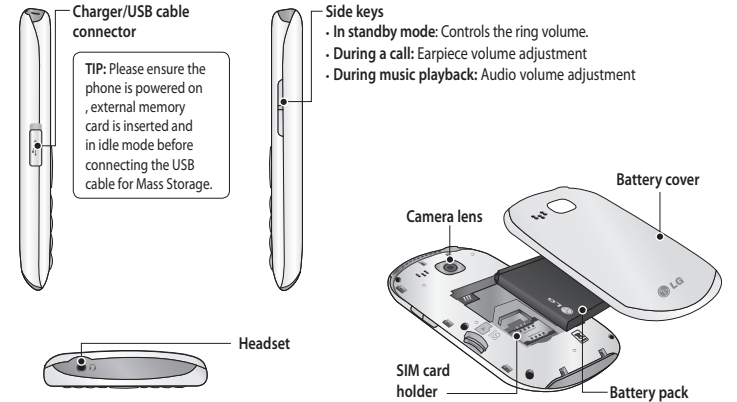
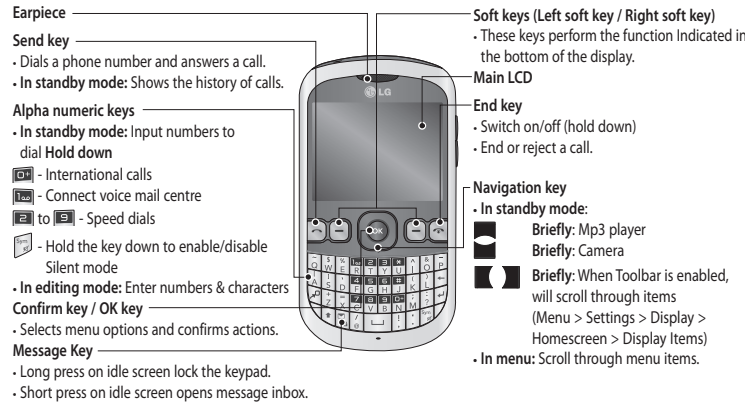
Product Authentication program
Dear Customers,
To protect all LG customers from counterfeit and grey market products and make sure that you receive official warranty service, LG is now running a product authentication program. To make sure your handset is a genuine product of LG, ONLY one SMS containing the IMEI No. of your purchased handset will be automatically sent to LG on the date of purchase. Once your phone is authenticated, you will receive the message 'Your handset is a genuine LG product.'
The customer shall bear the cost of one SMS for the product authentication program. In return, you will receive one additional month of warranty for free. One additional month of warranty covers only mobile phone, not batteries and accessories.
The IMEI No. sent to LG guarantees your handset to be free from manufacturing defects during the warranty period from the date of purchase without proof of purchase or warranty card.



www.lg.com
Bluetooth QD ID B016739

P/N: MMBB0392926(1.0)

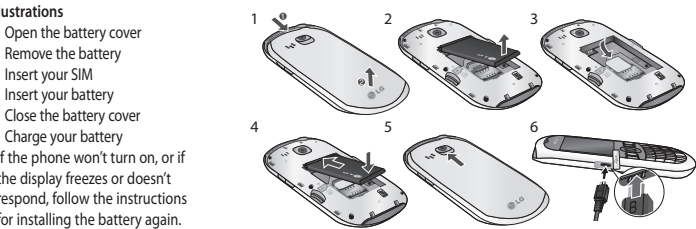
Getting to Know Your Phone



TIP: Please ensure the phone is powered on, external memory card is inserted and in idle mode before connecting the USB cable for Mass Storage.

Installing the SIM Card and Charging the Battery

Installing the SIM Card
When you subscribe to a cellular network, you are provided with a plug-in SIM card loaded with your subscription details, such as your PIN, any optional services available and many others.
Important! The plug-in SIM card can be easily damaged by scratches or bending, so be careful when handling, inserting or removing the card. Keep all SIM cards out of the reach of small children.



WARNING: Do not remove the battery when the phone is switched on, as this may damage the phone.

Video Camera

Shooting a quick video
1 Press **Menu** and select **Camera** and choose **Video Camera**. The video camera's viewfinder will appear on screen.
2 Focus the camera on what to record.
3 Select the **Rec.** icon on the bottom-centre of the screen and press **OK** to take a video. **Rec** will appear at the bottom of the viewfinder. Press **again** to stop recording.

After you've shot your video
A still image representing your captured video will appear on screen.
After recording a video clip, you can check the menu as follows:
- **Album** - View the pictures and videos you have taken in your Album.
- **Play** - Play the file.
- **New** - Press to shoot another video straight away.
- **Send** - Send the video via **MMS, Email or Bluetooth**.
- **Delete** - Delete the video you have just made. The viewfinder will reappear.

WARNING: When Image, Sound, Video, New slide, Subject, Business card, Schedule or My business card is added to the message. The message will be automatically converted to MMS mode and you will be charged accordingly.

Entering text
You can enter alphanumeric characters using the phone's keypad. For example, storing names in contacts, writing a message and creating scheduling events in the calendar all require entering text.
The following text input methods are available in the phone: Abc mode, and 123 mode.

NOTE: Some fields may allow only one input mode (e.g. telephone number in contact fields).

Changing your text message settings
Press **Menu**, select **Messaging**, then choose **Settings** and **Text message**. You can make changes to:

Music

MP3 Player
Your LG-C305 has a built-in music player so you can play all your favourite music.
NOTE:
- Before using music player, you will need to transfer music file onto your phone.
- Music player supports codec types as follows: MP3, WMA, AAC. Music player does not necessarily support all features and variations of file formats.

To access the music player, press **Menu** and select **Music** and select **MP3 player**. From here you can access:
- **Recently played** - View all of the songs you have played recently.
- **All songs** - Contains all of the songs you have on your phone.
- **My Playlists** - Contains all playlists you have created.
- **Artists** - Allows you to view all tracks sorted by artist.
- **Albums** - Allows you to view all tracks sorted by album.

- **Text message centre** - Enter the details for your message centre.
- **Delivery report** - Choose to receive confirmation that your message have been delivered.
- **Validity period** - Choose how long your messages are stored at the message centre.
- **Message types** - Convert your text into **Voice, Fax, X.400 or Email**.
- **Character encoding** - Choose how your characters are encoded. This affects the size of your message and therefore data costs.
- **Send long text as** - Choose whether to send your message as Multiple SMS or MMS when you enter a text longer than 2 pages in the message field.
Changing your multimedia message settings
Press **Menu**, select **Messaging**, then choose **Settings** and **Multimedia message**. You can make changes to:
- **Retrieval mode** - Choose to automatically or manually download multimedia messages depending on whether you are at home or roaming.

Calling

Making a Call
1 Make sure your phone is on.
2 You can use the keypad. To delete a digit press back arrow.
3 Press **Send** to begin the call.
4 To end the call, press **End**.

TIP! To enter + when making an international call, press and hold 0.

Making a call from your Contacts
It's easy to call anyone whose number you have stored in your Phonebook.
1 Press **Menu** to open the main menu. Select **Phonebook**.
2 Using the keypad, enter the first letter of the contact you want to call and scroll to the **contact**.
3 Press **Send** to begin the call.

Answering and rejecting a call
When your phone rings, press **Answer** to answer the call. While your phone is ringing you can press **Silent** to mute the ringing. This is useful if you have forgotten to change your

- **Genres** - Allows you to view all tracks sorted by genre.
- **Shuffle all songs** - Allows you to play all of the songs in random order.

E-Mail

Sending email
To send/receive an email, you should set up an email account.
1 Press **Menu**, select **E-Mail** and choose the account you want to use.
2 Choose **Write e-mail** and a new email window will open.
3 Enter the recipient email address then press down Navigation key to scroll through to Subject and message field.
4 Enter your message using the keypad and press send

FM Radio

Listening to the Radio
1 Press **Menu** and select **Music**, then choose **FM radio**.
2 Select the channel number of the station you would like

- **Delivery report** - Choose to request or allow a delivery report.
- **Read reply** - Choose to request or allow a read reply.
- **Priority** - Choose the priority level of your multimedia message.
- **Validity period** - Choose how long your message is stored at the message centre.
- **Slide duration** - Choose how long your slides appear on screen.
- **Creation mode** - Allows you to select the contents type supported by MMS.
- **Delivery time** - Configures the delivery time of message to the recipient. The multimedia message centre will deliver the message after the delivery time.
- **Multi msg centre** - Allows you to configure network information such as the multimedia service centre and the internet profile to send a multimedia message.

Phonebook

Searching for contact
1 Press **Menu** and select **Phonebook**.

profile to silent for a meeting.
Press **Silent** or select **Reject** in order to reject an incoming call.

NOTE: In call when speaker is activated, the speaker icon is displayed with red colour cross, when the speaker is deactivated speaker icon is displayed without red colour cross.

Speed dialing
You can assign a speed dial number to a contact you call frequently.

Viewing your Call History
You can check the list of All logs, Calls Only, Messages Only, Missed logs, Outgoing logs and Incoming logs.

Call settings
You can set call-specific functions. Press **Menu**, select **Settings** and choose **Call**.
- **Call divert** - Choose whether to divert your calls.
- **Call barring** - Select which calls you would like to be barred.
- **Call waiting** - Be alerted when you have a call waiting.
- **Fixed dial numbers** - Choose a list of numbers that can be called from your phone.

to listen to.
NOTE: If you are in an area with bad radio reception, you may have difficulty listening to the radio. It is recommended that you insert headphones into the hands-free connector when listening to the radio to ensure good radio reception.

Browser

Accessing the web
You can launch the WAP browser and access the homepage of the activated web profile. You can also manually enter a URL address and access the associated WAP page.
1 Press **Menu** and select **Browser**.
2 To go straight to the home page, select **Home**. Alternately, select **Enter address** and type in the URL, followed by **Open**.

NOTE: You will incur extra cost by connecting to these services and downloading content. Check data charges with your network provider.

2 Enter the name or number to search.
3 Use the navigation keys to scroll through the contact list.

Adding new contact
1 Press **Menu** and select **Phonebook**.
2 Press **Option** and select **New contact**.
3 In the Save to field, choose whether to store your new contact on your **Handset** or **USIM card**.
4 Enter the relevant information and select **Done**.

More

Setting your Alarm
1 Press **Menu** and select **More**, then choose **Alarm clock**.
2 Press **Options** and select **New alarm**.
3 Enter the required fields.
4 Select **Done**.
Adding an event to your calendar
1 Press **Menu** and select **More** and select **Organiser**, then choose **Calendar**.
2 Select the date you would like to add an event to. You can choose a date either by scrolling to it using the navigation

- **Excuse message**
- **Call reject settings** - Select **Off** or **On** and choose to reject all calls, those from specific groups, contacts, unregistered numbers (those not in your list of contacts) or those with no caller ID.
- **Send my number** - Choose whether your number will be displayed when you call someone. (Depends on your network provider.)
- **Auto redial** - Allows you to set the auto redial function when a call attempt has failed.
- **Minute minder** - Determines whether to sound a tone every 1 minute when you are in the call.
- **Bluetooth answer mode** - Choose how to answer a call when using a Bluetooth headset. Select **Hands-free** or **Handset**.
- **Save new number** - Selecting this option will save numbers that are not already in your contacts upon ending the call.
- **Call costs** - View the charges applied to your last call or all calls. This service is network dependent, some operators are unable to support this.

Wi-Fi

Wireless Manager allows you to manage Internet connections via Wi-Fi (Wireless LAN) on your device. It allows the phone to connect to local wireless networks or access the Internet wirelessly. Wi-Fi is faster and has a greater range than Bluetooth wireless technology and can be used for fast emailing and Internet browsing.
NOTE: The LG-C305 supports WEP and WPA-PSK/2 encryption, but not EAP or WPS encryption. If your Wi-Fi service provider or network administrator sets encryption for network security, fill in the key in the pop-up window. If encryption is not set, this popup window will not be shown. You can obtain the key from your Wi-Fi service provider or network administrator.

Messaging

Your LG-C305 includes functions related to SMS (Short Message Service), MMS (Multimedia Message Service) as well as the network's service messages. To use these functions, press **Menu** and select **Messaging**.

keys or by selecting **Options** and **Go to date** in order to enter a date.
3 Select **Options** then select **New schedule**.
4 Enter the details and press done.

Adding an item to your task list
1 Press **Menu** and select **More** and choose **Organiser**.
2 Select **Tasks** and select **New task**.
3 Enter the details and press done.

Adding a memo
1 Press **Menu** and select **More** and select **Organiser**, then **Memo**.
2 Select **New memo** and type your memo.
3 Select **Save**.

Date finder
Date finder is a handy tool to help you calculate what the date will be once a certain number of days have passed.

Voice recorder
Use your **Voice recorder** to record voice memos or other sounds.

Camera

Taking a quick photo
1 Press **Menu** and select **Camera**.
2 When the camera has focused on your subject, select the Capture icon on the bottom-centre of the screen and press **OK** to take a photo.
After taking a photo
Your captured photo will appear on the screen. The image name is shown on the top of the screen with five icons on the bottom side.
- **Album** - View the pictures and videos you have taken in your Album.
- **Send** - Send the photo via **Message, Email or Bluetooth**.
- **New** - Take another photo straight away.
- **Set as** - Use the image as Wallpaper, as a **Contact** image, or in your Start up image or Shut down image.
- **Delete** - Delete the photo you have just taken. The viewfinder will reappear.

Sending a message

1 Choose **Write message**.
2 A new message editor will open. Message editor combines **SMS** and **MMS** in one intuitive mode that is easy to switch between. The default setting of the message editor is **SMS mode**.
3 Enter your message using the keypad. See **Entering text** on the right for more information on how to enter text.
4 Select **Options** and choose **Insert** to add an **Image, Video, Sound, Template, Emotion, Name & Number, New slide, Subject or More (Business card/Schedule/Memo/Task/My business card)**.
5 Choose **Send to**.
6 Choose a contact from the list of contacts or enter the phone number.
7 Select **Send**.

Sending a voice recording

1 Once you have finished recording, select **Options**.
2 Select **Send** and choose from **MMS, E-mail or Bluetooth**.

Using your calculator
1 Press **Menu** and select **More**, then choose **Calculator**.
2 Press the numeric keys to input numbers.

Using the stopwatch
1 Press **Menu** and select **More**, then choose **Stopwatch**.
2 Select **Start** to begin the timer.

Converting Units
1 Press **Menu** and select **More**, then choose **Unit converter**.
2 Choose whether you would like to convert **Currency, Area, Length, Weight, Temperature, Volume or Velocity**.

Adding a city to your World clock
1 Press **Menu** and select **World clock**, then choose **World clock**.
2 To find out the time of specific city, press **Options** and select **New city**.
3 Move a city by navigator key and select a city on the Map.

Settings

Changing your profiles

- Press **Menu** and select **Settings**.
- Select **Profiles** and then choose the profile you want to edit.
- Select **Options** and choose **Personalise**.
- You can change all of the tones, its volumes and alert options from here.

Using Flight Mode

When Flight mode is activated, you will not be able to make calls, connect to the Internet or send messages.

Changing your Device settings

- Press **Menu** and select **Settings**.
- Select **Device** settings and choose from the list below.
 - Power save** - Choose to switch the factory set power saving settings On or Off.
 - Languages** - Change the display language of your LG-C305's.
 - Auto key lock** - Enable or disable automatic keypad lock.

- Press **Menu** and select **Settings**.
- Select **Profiles** and then choose the profile you want to edit.
- Select **Options** and choose **Personalise**.

- To enable your Bluetooth and make it visible for other Bluetooth devices, press Menu key then select Settings>Connectivity>Bluetooth>Activate Bluetooth then Settings>My device visibility>visible.
- From **Bluetooth**, select **Search new device**.
- Your LG-C305 will search for any Bluetooth devices in range.
- Choose the device you want to pair with, select **Add** and enter a passcode then choose **OK**.
- Your phone will then connect to the other device, on which you should enter the same passcode.
- Your passcode protected Bluetooth connection is now ready.

Using a Bluetooth headset

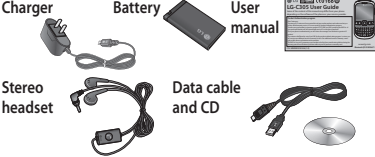
- Check that you **Bluetooth** is active and visible
- Follow the instructions that came with your headset to place it in pairing mode and pair your devices.
- Your LG-C305 will automatically connect to your Bluetooth headset and switch to headset profile.

- Press **Menu** and select **Settings**.
- Select **Profiles** and then choose the profile you want to edit.
- Select **Options** and choose **Personalise**.

- The unit should be kept away from heat sources such as radiators or cookers.
- Do not drop.
- Do not subject this unit to mechanical vibration or shock.
- Switch off the phone in any area where you are required by special regulations. For example, do not use your phone in hospitals as it may affect sensitive medical equipment.
- Do not handle the phone with wet hands while it is being charged. It may cause an electric shock and can seriously damage your phone.
- Do not charge a handset near flammable material as the handset can become hot and create a fire hazard.
- Use a dry cloth to clean the exterior of the unit (do not use solvents such as benzene, thinner or alcohol).
- Do not charge the phone when it is on soft furnishings.
- The phone should be charged in a well-ventilated area.
- Do not subject this unit to excessive smoke or dust.
- Do not keep the phone next to credit cards or transport tickets; it can affect the information on the magnetic strips.
- Do not tap the screen with a sharp object as it may damage the phone.

- Press **Menu** and select **Settings**.
- Select **Profiles** and then choose the profile you want to edit.
- Select **Options** and choose **Personalise**.

Various accessories are available for your mobile phone. These are detailed below.



- NOTE**

 - Always use genuine LG accessories. Failure to do so may invalidate your warranty.
 - Accessories may be different in different regions. Please check with our regional service company or agent for further enquiries.

Technical Data

Ambient Temperatures

- Max: +55°C (discharging) +45°C (charging)
- Min: -10°C

Changing the date & time

- Press **Menu** and select **Settings**.
- Select **Device** and choose **Date and Time** and choose from the list below:
 - Date and time settings** - Select On Auto update, and the phone will automatically update the date and time.
 - Date format** - You can enter the current date. You can set the date format (DD/MM/YYYY, MM/DD/YYYY, YYYY/MM.DD).
 - Date separator** - You can enter the current date. You can set the date separator (DD/MM/YYYY, DD.MM.YYYY, DD-MM-YYYY).
 - Time format** - You can set the time format **12 hours** or **24 hours**.

Changing your security settings

Change your security settings to keep your LG-C305 and the important information it holds protected.

- Press **Menu** and select **Settings** and choose **Device**.
- Select **Security** and choose from the list below:
 - PIN code request** - Enable or disable PIN code request when

- Press **Menu** and select **Settings**.
- Select **Profiles** and then choose the profile you want to edit.
- Select **Options** and choose **Personalise**.

Sending and receiving your files using Bluetooth To switch Bluetooth on:

- Press **Menu** and select **Settings**. Choose **Connectivity** then select **Bluetooth**.
- Select **Activate Bluetooth**.
- Select **Deactivate Bluetooth** to switch Bluetooth off.

To send a file:

- Open the file you want to send, typically this will be a photo, video or music file.
- Select **Options** and choose **Send via Bluetooth**.
- Select **Yes** to turn Bluetooth on if it is not already activated.
- Your LG-C305 will automatically search for other Bluetooth enabled devices within range.
- Choose the device you want to send the file to and select **OK**.

To receive a file:

- To receive files, your Bluetooth must be both active and **Visible**.
- A message will prompt you to accept the file from the sender. Select **Yes** to receive the file.

- Press **Menu** and select **Settings**.
 - Select **Profiles** and then choose the profile you want to edit.
 - Select **Options** and choose **Personalise**.
- Do not expose the phone to liquid or moisture.
 - Use accessories like earphones cautiously. Do not touch the antenna unnecessarily.

Efficient Phone Operation Electronic Devices

- Do not use your mobile phone near medical equipment without requesting permission. Avoid placing the phone over pacemakers, i.e. in your breast pocket.
- Some hearing aids might experience disturbance due to mobile phones.
- Minor interference may affect TVs, radios, PCs etc.

Road Safety

Check the laws and regulations on the use of mobile phones in the areas where you drive.

- Do not use a hand-held phone while driving.
- Give your full attention to driving.
- Use a hands-free kit, if available.
- Pull off the road and park before making or answering a call if driving conditions so require.

- phone power on.
- Device lock** - Request device PIN code; At device start up, When SIM card is changed, or Immediately.
- Application lock** - Selected applications can be locked requiring correct PIN entry to open.
- Change codes** - Change your PIN code (This menu item will appear if PIN code request is set to On), PIN2 code, Security code.

NOTE: Security code
The security code protects from unauthorised use of your phone. The default security code is set to '0000' The security code default setting can be modified from the Security > Change codes.

Viewing memory status

Your LG-C305 has three memories available: the phone, the SIM card and an external memory card (you may need to purchase the memory card separately).

You can use the memory manager to determine how each memory is used and see how much space is available. Press **Menu** and select **Settings**, select **Device** and choose

TIP! Keep an eye on the progress bar to make sure your file is sent.

TIP! The Bluetooth® word mark and logos are owned by the Bluetooth SIG, Inc. and any use of such marks by LG Electronics is under licence. Other trademarks and trade names are those of their respective owners.
--

Synchronise your phone with your PC

You can synchronise your phone with your PC to make sure all your important details and dates match, but also to backup your files to put your mind at ease.

Backing up and restoring your phone's information

Backing up your phone's information:

- Connect the USB cable to your phone and your PC.
- Select the **PC suite** from the popup menu in your phone.
- Click on the Backup icon, and select **Backup** or **Restore**.
- Mark the contents you would like to back up. Select the location you would like to backup information to. Click **OK**.
- Your information will be backed up.

- Press **Menu** and select **Settings**.
 - Select **Profiles** and then choose the profile you want to edit.
 - Select **Options** and choose **Personalise**.
- RF energy may affect some electronic systems in your vehicle, such as car stereos and safety equipment.
 - If your vehicle is equipped with an airbag, do not obstruct it with installed or portable wireless equipment. This may cause the airbag to fail or cause serious injury due to improper performance.
 - If you are listening to music while out and about, please ensure that the volume is at a reasonable level so that you are aware of your surroundings. This is particularly imperative when near roads.

- Do not use your mobile phone near medical equipment without requesting permission. Avoid placing the phone over pacemakers, i.e. in your breast pocket.
- Some hearing aids might experience disturbance due to mobile phones.
- Minor interference may affect TVs, radios, PCs etc.

Avoid Damage to Your Hearing

Damage to your hearing can occur if you are exposed to loud sounds for long periods of time. We therefore recommend that you do not turn the handset on or off when it is close to your ear. We also recommend that music and call volumes are set to a reasonable level.

- Press **Menu** and select **Settings**.
 - Select **Profiles** and then choose the profile you want to edit.
 - Select **Options** and choose **Personalise**.
- Do not use your mobile phone near medical equipment without requesting permission. Avoid placing the phone over pacemakers, i.e. in your breast pocket.
 - Some hearing aids might experience disturbance due to mobile phones.
 - Minor interference may affect TVs, radios, PCs etc.

- Press **Menu** and select **Settings**.
- Select **Profiles** and then choose the profile you want to edit.
- Select **Options** and choose **Personalise**.

This section lists some problems that you might encounter while using your phone. Some problems require that you call your service provider, but most of problems you encounter are easy to correct yourself.

Symptom	Possible causes	Possible Corrective measures
No connection to the network	Signal is weak or you're outside of the carrier network.	Move to a window or open space. Check service provider coverage map.
Codes do not match	When you want to change a security code you have to confirm the new code by entering it again. The two codes that you have entered do not match.	Contact your Service Provider.
Function cannot be set	Not supported by Service Provider or registration required.	Contact your Service Provider.
Calls not available	Dialing error or service limitations.	Check the number dialed and check the reception. Contact your service provider.
Calls not available	Dialing error New SIM card inserted Prepaid Charge limit reached	New network not authorized. Check for new restrictions. Contact Service Provider or reset limit with PIN 2.

Memory info You will then see the current status of the memories in your LG-C305.

Resetting your phone

Menu>Settings>Device>Reset device will allow you to clear either the phone Settings only or Data & settings.

CAUTION: Make sure to backup your personal information before resetting device.

Changing your display settings

- Press **Menu** and select **Settings**.
- Select **Display** and choose from:
 - Homescreen** - Adjust the Wallpaper and Display items.
 - Menu theme** - Quickly change the whole look of your screen.
 - Menu style** - Change the menu view from List style or Grid style.
 - Font** - Adjust the font size.
 - Backlight** - Adjust screen brightness and how long the backlight remains on when idle.

- Press **Menu** and select **Settings**.
- Select **Profiles** and then choose the profile you want to edit.
- Select **Options** and choose **Personalise**.

Restoring your phone's information

- Connect the USB cable to your phone and PC.
- Select **PC Suite** from the popup menu on your phone.
- From PC suite, click the Backup icon and select Restore then **OK**
- Browse for a backed up file to restore from or select from list provided then click **OK**
- Your information will be restored to your phone.™

Viewing your phone files on your PC

Viewing the contents of your phone on your PC helps you to arrange files, organise documents and remove contents you no longer need.

- Press **Menu** and select **Settings**.
 - Select **Profiles** and then choose the profile you want to edit.
 - Select **Options** and choose **Personalise**.
- RF energy may affect some electronic systems in your vehicle, such as car stereos and safety equipment.
 - If your vehicle is equipped with an airbag, do not obstruct it with installed or portable wireless equipment. This may cause the airbag to fail or cause serious injury due to improper performance.
 - If you are listening to music while out and about, please ensure that the volume is at a reasonable level so that you are aware of your surroundings. This is particularly imperative when near roads.

- Press **Menu** and select **Settings**.
 - Select **Profiles** and then choose the profile you want to edit.
 - Select **Options** and choose **Personalise**.
- Do not use your mobile phone near medical equipment without requesting permission. Avoid placing the phone over pacemakers, i.e. in your breast pocket.
 - Some hearing aids might experience disturbance due to mobile phones.
 - Minor interference may affect TVs, radios, PCs etc.

Blasting Area

Do not use the phone where blasting is in progress. Observe restrictions, and follow the rules and regulations.

Potentially Explosive Atmospheres

- Do not use the phone at a refueling point.
- Do not use near fuel or chemicals.
- Do not transport or store flammable gas, liquid, or explosives in the same compartment of your vehicle as your mobile phone and accessories.

In Aircraft

- Wireless devices can cause interference to aircraft.
- Turn your mobile phone off before boarding any aircraft.
- Do not use it on the aircraft without permission from the crew.

Children

Keep the phone in a safe place out of the reach of small children. It includes small parts which may cause a choking hazard if detached.

TIP! The longer the backlight is on, the more battery power is used and you may need to charge your phone more often.
--

- Greeting message** - Configure the greeting message, which will appear whenever you start-up the phone.
- Other screens** - Choose an image for your start-up/shut down screen.

Social network services (SNS)

Your LG-C305 has SNS that lets you enjoy and manage your social network.

NOTE: An additional costs may be incurred when connecting and using online services. Check your data charges with your network provider.

Phone Software update

LG Mobile Phone Software update from internet

For more information on using this function, please visit the http://update.lgmobile.com or http://www.lg.com/common/index.jsp → select country → Support.

- Press **Menu** and select **Settings**.
- Select **Profiles** and then choose the profile you want to edit.
- Select **Options** and choose **Personalise**.

This LG-C305 mobile phone model has been designed to comply with the applicable safety requirements for exposure to radio waves. These requirements are based on scientific guidelines that include safety margins designed to ensure the safety of all users, regardless of age and health.

- The radio wave exposure guidelines employ a unit of measurement known as the Specific Absorption Rate, or SAR. SAR tests are conducted using standardized methods with the phone transmitting at its highest certified power level in all used frequency bands.
- While there may be differences between the SAR levels for various LG phone models, they are all designed to meet the relevant guidelines for exposure to radio waves.

- Press **Menu** and select **Settings**.
- Select **Profiles** and then choose the profile you want to edit.
- Select **Options** and choose **Personalise**.

Emergency Calls

Emergency calls may not be available under all mobile networks. You should therefore never depend solely on the phone for emergency calls. Check with your local service provider.

Battery Information and Care

- You do not need to completely discharge the battery before recharging. Unlike other battery systems, there is no memory effect that could compromise the battery's performance.
- Use only LG batteries and chargers. LG chargers are designed to maximise the battery life.
- Do not disassemble or short-circuit the battery pack.
- Keep the metal contacts of the battery pack clean.
- Replace the battery when it no longer provides acceptable performance. The battery pack maybe recharged hundreds of times until it needs replacing.
- Recharge the battery if it has not been used for a long time to maximise usability.
- Do not expose the battery charger to direct sunlight

- Press **Menu** and select **Settings**.
- Select **Profiles** and then choose the profile you want to edit.
- Select **Options** and choose **Personalise**.

Symptom	Possible causes	Possible Corrective measures
Phone cannot be switched on	On/Off key pressed too briefly. Battery is not charged.	Press On/Off key for at least two seconds. Charge battery. Check charging indicator in the display.
	Battery contacts are dirty.	Clean the battery contacts.
Charging error	Battery totally empty. Contact problem.	Charge battery. Check power supply and connection to the phone. Check the battery contacts, clean them if necessary.
	No power from outlet. Charger defective. Wrong charger. Battery defective.	Plug in to a different socket or check voltage. Test with another charger. Only use original LG accessories. Replace battery.
Network connection is lost.	Signal too weak.	Reconnection to another service provider if network mode is automatic.
Number not permitted	The Fixed Dial Number function is on.	Check the Settings menu and turn the function off.

This Feature allows you to update the firmware of your phone to the latest version conveniently from the internet without the need to visit a service centre.

As the mobile phone firmware update requires the user's full attention for the duration of the update process, please make sure to check all instructions and notes that appear at each step before proceeding. Please note that removing the USB data cable or battery during the upgrade may seriously damage you mobile phone.

Changing your connectivity settings

Your connectivity settings have already been set up by your network operator, so you can enjoy your new phone immediately. To change any settings, Press **Menu** and select Settings then choose **Connectivity**.

Changing your Bluetooth settings

Press **Menu** and select **Settings** and choose **Connectivity**.

Pairing with another Bluetooth device

By pairing your LG-C305 and another device, you can set up a passcode protected connection. This means your pairing is more secure.

- Press **Menu** and select **Settings**.
 - Select **Profiles** and then choose the profile you want to edit.
 - Select **Options** and choose **Personalise**.
- The SAR limit recommended by the International Commission on Non-Ionizing Radiation Protection (ICNIRP) is 2 W/kg averaged over 10 g of tissue.
 - The highest SAR value for this phone model tested by DASY4 for use close to the ear is 1.20 W/kg (10 g), and when worn on the body is 0.663 W/kg (10 g).
 - SAR data information for residents in countries/regions that have adopted the SAR limit recommended by the Institute of Electrical and Electronics Engineers (IEEE), which is 1.6 W/kg averaged over 1 g of tissue.

Product Care and Maintenance

⚠ WARNING: Only use batteries, chargers and accessories approved for use with this particular phone model. The use of any other types may invalidate any approval or warranty applying to the phone, and may be dangerous.

- Do not disassemble this unit. Take it to a qualified service technician when repair work is required.
- Keep away from electrical appliances such as TVs, radios and personal computers.

- Press **Menu** and select **Settings**.
 - Select **Profiles** and then choose the profile you want to edit.
 - Select **Options** and choose **Personalise**.
- Do not use your mobile phone near medical equipment without requesting permission. Avoid placing the phone over pacemakers, i.e. in your breast pocket.
 - Some hearing aids might experience disturbance due to mobile phones.
 - Minor interference may affect TVs, radios, PCs etc.

- Do not use your mobile phone near medical equipment without requesting permission. Avoid placing the phone over pacemakers, i.e. in your breast pocket.
 - Some hearing aids might experience disturbance due to mobile phones.
 - Minor interference may affect TVs, radios, PCs etc.
- Do not use your mobile phone near medical equipment without requesting permission. Avoid placing the phone over pacemakers, i.e. in your breast pocket.
 - Some hearing aids might experience disturbance due to mobile phones.
 - Minor interference may affect TVs, radios, PCs etc.
- Do not use your mobile phone near medical equipment without requesting permission. Avoid placing the phone over pacemakers, i.e. in your breast pocket.
 - Some hearing aids might experience disturbance due to mobile phones.
 - Minor interference may affect TVs, radios, PCs etc.
- Do not use your mobile phone near medical equipment without requesting permission. Avoid placing the phone over pacemakers, i.e. in your breast pocket.
 - Some hearing aids might experience disturbance due to mobile phones.
 - Minor interference may affect TVs, radios, PCs etc.
- Do not use your mobile phone near medical equipment without requesting permission. Avoid placing the phone over pacemakers, i.e. in your breast pocket.
 - Some hearing aids might experience disturbance due to mobile phones.
 - Minor interference may affect TVs, radios, PCs etc.
- Do not use your mobile phone near medical equipment without requesting permission. Avoid placing the phone over pacemakers, i.e. in your breast pocket.
 - Some hearing aids might experience disturbance due to mobile phones.
 - Minor interference may affect TVs, radios, PCs etc.
- Do not use your mobile phone near medical equipment without requesting permission. Avoid placing the phone over pacemakers, i.e. in your breast pocket.
 - Some hearing aids might experience disturbance due to mobile phones.
 - Minor interference may affect TVs, radios, PCs etc.
- Do not use your mobile phone near medical equipment without requesting permission. Avoid placing the phone over pacemakers, i.e. in your breast pocket.
 - Some hearing aids might experience disturbance due to mobile phones.
 - Minor interference may affect TVs, radios, PCs etc.
- Do not use your mobile phone near medical equipment without requesting permission. Avoid placing the phone over pacemakers, i.e. in your breast pocket.
 - Some hearing aids might experience disturbance due to mobile phones.
 - Minor interference may affect TVs, radios, PCs etc.
- Do not use your mobile phone near medical equipment without requesting permission. Avoid placing the phone over pacemakers, i.e. in your breast pocket.
 - Some hearing aids might experience disturbance due to mobile phones.
 - Minor interference may affect TVs, radios, PCs etc.

or use it in places with high humidity, such as in the bathroom.

- Do not leave the battery in hot or cold places, as this may deteriorate the battery performance.
- There is a risk of explosion if the battery is replaced by an incorrect type.

- Dispose of used batteries according to the manufacturer's instructions. Please recycle when possible. Do not dispose of batteries in the household waste.
- If you need to replace the battery, take it to the nearest authorised LG Electronics service point or dealer for assistance.
- Always unplug the charger from the wall socket after the phone is fully charged to save unnecessary power consumption of the charger.
- Actual battery life will depend on network configuration, product settings, usage patterns, battery and environmental conditions.

- Press **Menu** and select **Settings**.
- Select **Profiles** and then choose the profile you want to edit.
- Select **Options** and choose **Personalise**.

- Press **Menu** and select **Settings**.
- Select **Profiles** and then choose the profile you want to edit.
- Select **Options** and choose **Personalise**.