



C E 0168

LG-A133 USER GUIDE

This manual may differ from the phone depending on the phone software version and service provider used.



Disposal of your old appliance

- 1 When this crossed-out wheeled bin symbol is attached to a product it means the product is covered by the European Directive 2002/96/EC.
- 2 All electrical and electronic products should be disposed of separately from the municipal waste stream via designated collection facilities appointed by the government or the local authorities.
- 3 The correct disposal of your old appliance will help prevent potential negative consequences for the environment and human health.
- 4 For more detailed information about disposal of your old appliance, please contact your city office, waste disposal service or the shop where you purchased the product.



P/N: MMB0389326 (1.0)

Turning Your Phone On and Off

1. Press and hold the End key until the power comes on.
2. Press and hold the End key until the power goes off.

Making a call

1. Enter a phone number including the area code.
2. Press the key to call the number.
3. To end the call, press the key.

Making an international call

1. Press and hold the key for the international prefix. The '+' character automatically selects the international access code.
2. Enter the country code, area code, and the phone number.
3. Press [Send] key to call the number.

Answering a call

1. When you receive a call, the phone rings.
2. If the **Press any key** has been set as the **Answer mode** (Settings > Call > Answer mode), any key press will answer a call except for the key.
3. To end the call, press the key.

Anti Theft Mobile Tracker (ATMT)

Anti-theft mobile tracker (ATMT) allows you to track your lost phone. When someone uses your phone without your permission, the tracking service will be activated.

You are reminded by a text message sent to the default phone number you have set, without the unauthorised user's knowledge. You can always activate the ATMT and configure your personal settings.

To activate Anti-theft mobile tracker

1. From the main menu, select **Settings > Security > Anti-theft mobile tracker** and press **Select**.
2. Select **Set Anti-theft** and press **Select**.
3. Switch **On** or **Off** and press **Select**.
4. Input the security code to enable or disable this function.
5. Then in the Anti-theft mobile tracker menu, edit and save the name in **Sender name** and numbers in **Sending number list**.

Note

> The default ATMT code is "0000". You have to enter the code before configuring the ATMT settings.

Call log Menu 3

Call log	You can view all lists of outgoing or incoming calls.
Missed calls	You can view the unanswered calls.
Received calls	You can view the Received calls.
Dialled numbers	You can view the outgoing call numbers.
Call duration	Allows you to view the duration of your incoming and outgoing calls. You can also reset the call timers.
Packet Data counter	You can check the amount of data transferred over the network.
Call costs	View the charges applied to your dialled numbers and the call duration of all your received and dialled calls. Also you can do Cost Settings.

Installing the SIM card and the handset battery

Installing the SIM Card

When you subscribe to a cellular network, you are provided with a plug-in SIM card loaded with your subscription details, such as your PIN, any optional services available and many others.

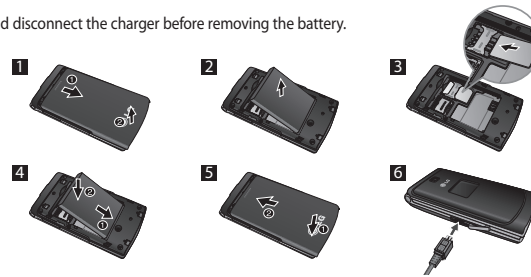
Important! > The plug-in SIM card and its contacts can be easily damaged by scratches or bending, so be careful when handling, inserting or removing the card. Keep all SIM cards out of the reach of small children.

Illustrations

Always switch the device off and disconnect the charger before removing the battery.

- 1 Remove the back cover.
- 2 Lift battery away.
- 3 Insert the SIM card.
- 4 Insert the battery pack.
- 5 Attach the back cover.
- 6 Charge the battery.

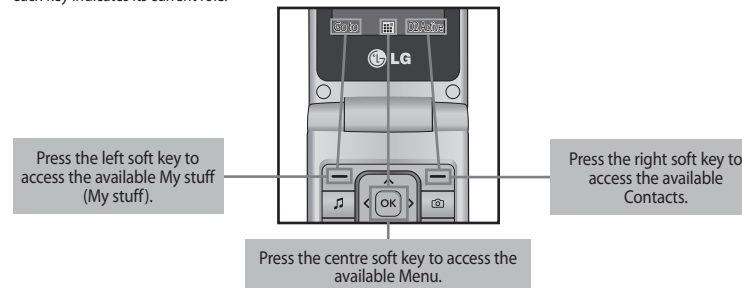
Note: Fully charge the battery before using it for the first time.



Selecting functions and options

Your phone offers a set of functions that allow you to customize the phone. These functions are arranged in menus and sub-menus, accessed via the two soft keys marked and . Each menu and sub-menu lets you view and alter the settings of a particular function.

The roles of the soft keys vary according to the current context; the label on the bottom line of the screen just above each key indicates its current role.



Quick feature reference

This section provides brief explanations of features on your phone.

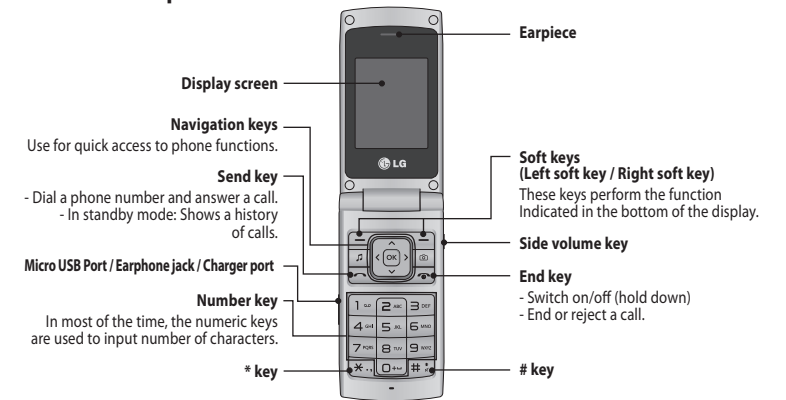
Messaging Menu 1

Create message	This menu includes functions related to SMS (Short Message Service) and MMS (Multimedia Message Service).
Inbox	You will be alerted when you have received messages. They will be stored in Inbox.
My mailbox	My Email lets you get your favourite emails on your mobile for a fixed price each month.
Drafts	You can save the message temporarily in Drafts.
Outbox	This is a temporary storage folder for the unsent messages or messages that you have sent but fail to deliver.
Sent items	After sending out the message, the text message or multimedia message is saved in the Sent folder.
Saved items	You can access your saved messages, text templates and multimedia templates.
Emoticons	A list of useful Emoticons, already written for a quick reply.
Message settings	This menu allows you to set features of your network service provider.

Settings Menu 4

Profiles	You can adjust and customize the phone tones for different events, or environments.
Display	You can change settings for the phone display.
Data and time	You can set functions relating to the date and time.
Connectivity	You can set up the condition or data for the phone to connect with other device or network.
Call	You can set the menu relevant to a call.
Phone	Allows you to set the phone <ul style="list-style-type: none"> > My Navi Key: Allows you to change the preferences on the Hotkeys that are currently assigned for your navigation keys (when in standby mode). > Language: You can change the language for the display texts in your phone. This change will also affect the Language Input mode. > Power save: Choose among the followings, Off/Night only/Always On, to change the factory set power saving settings. > Handset information: Shows your phone number, model number and S/W version.
Network	You can set select network and network mode settings using this menu. Also you can add a preferable network to be connected to Preferred lists.

Phone Components



Entering Text

You can enter alphanumeric characters by using the phone's keypad.

T9 Mode

The T9 predictive text input mode lets you enter words easily with a minimum number of key presses. As you press each key, the phone begins to display the characters that it thinks you are typing based on the built-in dictionary.

123 Mode (Numbers Mode)

Type numbers using pressing and holding the button keys.

Symbol Mode

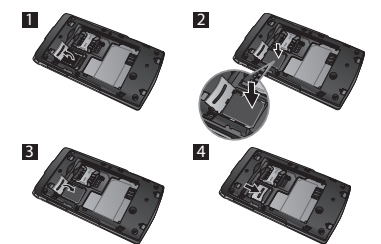
The symbol mode enables you to enter various symbols or special characters. To enter a symbol, select **Options** → **Insert Symbol**. Use the navigation keys to select the desired symbol and press the OK key.

Installing a Memory Card

Lift the memory card cover and insert a microSD card with the gold contact area facing downward. Close the memory card cover so that it clicks shut.

To remove the memory card, gently push it as shown in the diagram.

Note: A memory card is an optional accessory.



Contacts Menu 2

Names	Select Names and enter the name that you want to search from the contact list. You can register a new contact address. You can enter the name, different phone numbers, email addresses, groups and image of a new contact.
Settings	You can set the contact display option.
Groups	You can list up to the members per each group.
Speed dials	You can assign any of the keys from 2 to 8 with a name list entry. You can call directly by pressing this key when you are in idle screen.
Service dial numbers	Use this function to access a particular list of services provided by your network operator (if supported by the SIM card).
Own number	You can save and check your own number in SIM card.
My business card	This option allows you to create your own business card featuring name and any numbers.

Settings Menu 4 (Continued)

Internet profiles	This menu shows the Internet profiles. You can create new profiles, delete or edit them using the options menu. However, you cannot delete or edit default configurations.
Access points	This menu shows the access points list. You can create new profiles, delete or edit them by using the options menu. However, you cannot delete or edit default configurations.
Packet data conn.	If you select the 'When available' option, your phone is automatically registered to a GPRS network when you switch the phone on. If you select "When needed", the GPRS connection is established for the duration of a WAP or application connection.
Security	This menu allows you to set the phone's safety. <ul style="list-style-type: none"> > PIN code request: You can set the phone to ask for the PIN code of your SIM card when the phone is switched on. > Handset lock: You can use a security code to avoid unauthorised use of the phone. > Lock if SIM in changed: Set the lock function if SIM changed. > Anti-theft mobile tracker: The ATMT feature of this phone provides you with the ability to have a tracking system in place for your mobile in case you lose or misplace it. > Change codes: PIN is an abbreviation of Personal Identification Number to prevent use by unauthorised persons. You can change the access codes: Security code, PIN code, PIN2 code, ATMT code.

Settings Menu 4 (Continued)

Memory info.	You can check free space and memory usage of phone, SIM card and external memory (if inserted).
Restore factory settings	You can initialize all factory defaults. You need Security code to activate this function.

Gallery Menu 5

My memory card	If your phone has a memory card in the card slot, you can save images, sounds, and videos onto it.
My images	Shows the list of image files.
My sounds	Saved audio files are displayed in the list.
My videos	Displays the list of video files.
My games & apps	You can access a great selection of games and applications on your phone.
Others	When you receive files of an undefined format via email, the files are saved in this folder.

Organiser Menu 7 (Continued)

World time	The World time function provides time information on major cities worldwide.
Go to	It helps you to go to the menu you search for. You can set the item as Go to.

Applications Menu 8

Your LG-A133 comes with preloaded games to keep you amused when you have time to spare. If you choose to download any additional games or applications they will be saved into this folder. Press **Menu** and select **Games & Apps**. Choose **My games & apps**.

Note: An additional cost is incurred when connecting to this service. Check your data charges with your network provider.

Guidelines for safe and efficient use (Continued)

- › Use a dry cloth to clean the exterior of the unit. (Do not use any solvents.)
- › Do not keep the phone next to credit cards or transport tickets; it can affect the information on the magnetic strips.

Electronic devices

All mobile phones may get interference, which could affect performance.

- › Do not use your mobile phone near medical equipment without requesting permission. Avoid placing the phone over a pacemaker, i.e. in your breast pocket.

Road safety

Check the laws and regulations on the use of mobile phones in the areas when you drive.

- › Do not use a hand-held phone while driving.
- › Use a hands-free kit, if available.
- › Pull off the road and park before making or answering a call if driving conditions so require.

Blasting area

Do not use the phone where blasting is in progress. Observe restrictions, and follow any regulations or rules.

Guidelines for safe and efficient use (Continued)

Exposure to radio frequency energy

Radio wave exposure and Specific Absorption Rate (SAR) information

This mobile phone model LG-A133 has been designed to comply with applicable safety requirement for exposure to radio waves. This requirement is based on scientific guidelines that include safety margins designed to ensure safety of all persons, regardless of age and health.

- › The radio wave exposure guidelines employ a unit of measurement known as the Specific Absorption Rate, or SAR. Tests for SAR are conducted using standardised methods with the phone transmitting at its highest certified power level in all used frequency bands.
- › While there may be differences between the SAR levels of various LG phone models, they are all designed to meet the relevant guidelines for exposure to radio waves.
- › The SAR limit recommended by the International Commission on Non-Ionizing Radiation Protection (ICNIRP) is 2W/kg averaged over ten (10) gram of tissue.
- › The highest SAR value for this model phone tested by DASY4 for use at the ear is 0.722W/kg (10g) and when worn on the body is 1.03W/kg (10g).
- › SAR data information for residents in countries/regions that have adopted the SAR limit recommended by the Institute of Electrical and Electronics Engineers (IEEE) is 1.6 W/kg averaged over one (1) gram of tissue.

Media Menu 6

Camera	You can take photos with the built in camera and adjust its settings to suit your needs.
Video	You can record a video clip through the built-in camera.
Music	Using the songs in your phone, you can easily enjoy various music.
FM radio	You can receive FM radio with your external earphone. You can listen to your favourite radio station anytime. Note: You have to insert Ear-mic into Handsfree connector in order to listen to the Radio and keep the good radio reception.
Voice recorder	You can record voice memo.

Web Menu 9

Home	Connects to a homepage. The homepage will be the site which is defined in the activated profile.
Google Search	You can access Google web page directly from here.
Bookmarks	This menu allows you to store the URL of favorite web pages for easy access at a later time.
Last web address	This menu shows the history of recently browsed pages.
Settings	You can set the profile, cache and security related to internet service.
Go to address	You can connect directly to the site you want. After entering a specific URL, press OK key to make the connection done to connect to the site.
Saved pages	Allows you to view your saved web pages.

Guidelines for safe and efficient use (Continued)

Potentially explosive atmospheres

Do not use the phone at a refueling point. Do not use near fuel or chemicals.

In aircraft

Wireless devices can cause interference in aircraft.

- › Turn off your mobile phone before boarding any aircraft.

Children

Keep the phone in a safe place out of children's reach. It includes small parts which if detached may cause a choking hazard.

Emergency calls

Emergency calls may not be available under all cellular networks. Therefore, you should never depend solely on the phone for emergency calls. Check with your local service provider.

Accessories

There are various accessories for your mobile phone. You can select these options according to your personal communication requirements.

Standard Battery



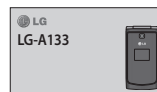
Travel Adapter



Headset



User Guide



Note

- › Always use genuine LG accessories. Failure to do this may invalidate your warranty.
- › Accessories may be different in different regions; please check with our regional service company or agent for further enquiries.

Organiser Menu 7

Alarm clock	You can set the alarm clock to go on at a specified time.
Calendar	You can see the calendar and add the events here in selected date.
To-do list	You can view, edit and add tasks to do.
Notes	You can add new memo, view and manage saved memos.
Secret notes	You can write the private memo to protect your privacy. You enter the security code to use this menu.
Cash Book	Cash book is a simple accounting book that is used to record basic information about cash receipts and payments.
BMI calculator	BMI(Body Mass Index) is a measure of body fat based on height and weight.
Calculator	The calculator provides the basic arithmetic functions: addition, subtraction, multiplication and division.
Stopwatch	This option allows you to use the function of a stopwatch.
Date finder	You can count the target date by adding(After) or subtracting(Before) days.
Converter	This converts any measurement into a unit you want. There are many types that can be converted into units: Currency, Area, Length, Weight, Temperature, Volume, Velocity.

Guidelines for safe and efficient use

Please read these simple guidelines. Not following these guidelines may be dangerous or illegal. Further detailed information is given in this manual.

Warning

- › For your safety, use ONLY specified ORIGINAL batteries and chargers.
- › Switch off the phone in any area where required by special regulations, e.g. in a hospital where it may affect medical equipment.
- › Batteries should be disposed off in accordance with relevant legislation.

Product care and maintenance

WARNING! Only use batteries, chargers and accessories approved for use with this particular phone model. The use of any other types may invalidate any approval or warranty applying to the phone, and may be dangerous.

- › Do not disassemble this unit. Take it to a qualified service technician when repair work is required. Repairs under warranty, at LG's option, may include replacement parts or boards that are either new or reconditioned, provided that they have functionality equal to that of the parts being replaced.
- › The unit should be kept away from heat sources such as radiators or cookers.

Guidelines for safe and efficient use (Continued)

Battery information and care

- › You do not need to completely discharge the battery before recharging. Unlike other battery systems, there is no memory effect that could compromise the battery's performance.
- › Use only LG batteries and chargers. LG chargers are designed to maximise the battery life.
- › Do not disassemble or short-circuit the battery pack.
- › Replace the battery when it no longer provides acceptable performance. The battery pack may be recharged hundreds of times before it needs to be replaced.
- › Do not expose the battery charger to direct sunlight or use it in high humidity, such as the bathroom.
- › Risk of explosion if battery is replaced by an incorrect type.
- › Dispose off used batteries according to the manufacturer's instructions.

Technical Data

Ambient Temperatures

- › **Max.** : +55°C (discharging)
+45°C (charging)
- › **Min.** : -10°C

Bluetooth QD ID B016672

Declaration of Conformity		LG Electronics
Manufacturer Details		
Name	LG Electronics Inc	
Address	LG Electronics Inc, LG Twin Towers 25, Yeouido-dong, Yongsang-gu, Seoul, Korea 150-721	
Product Details		
Product Name	Q550 900 / Q550 900 / DCIS 1800 / PCS 1900 Quad Band Terminal Equipment	
Model Name	LG-A133 / LG-A133	
Type Name	LG	
CE Marking (Technical Data)		
MKTTE Declaration: 09100102		
EN 301 488-01 V1.1, EN 301 488-01 V1.1, EN 301 488-01 V1.1, EN 301 488-17 V1.2		
EN 301 488-01 V1.1, EN 301 488-01 V1.1, EN 301 488-01 V1.1, EN 301 488-17 V1.2		
EN 301 488-01 V1.1, EN 301 488-01 V1.1, EN 301 488-01 V1.1, EN 301 488-17 V1.2		
EN 301 488-01 V1.1, EN 301 488-01 V1.1, EN 301 488-01 V1.1, EN 301 488-17 V1.2		
Conformity Evaluation		
The conformity to above standards is verified by the following Notified Body(BSRT)		
BSRT: Pirella Göttsche-Guidotti Rinaldi Gibson on Thames/Lurvey -4712 210, United Kingdom		
Notified Body Identification Number: 0108		
Declaration		
I hereby declare under our sole responsibility that the product mentioned above to which this declaration relates complies with the above mentioned standards and Directives.	Name	Issued Date
	Sung Hoon, JI Director	28. May. 2010
LG Electronics Logistics and Services B.V. Volkseisen 11, 1227 AE Amstelveen, The Netherlands		
Signature of representative		