



LG-A190 User Guide

This guide will help you to understand your new mobile phone. It will provide you with useful explanations of the features on your phone. Some of the contents of this manual may differ from your phone depending on the phone software or your service provider.

Making an Emergency call when there is no USIM card present in the handset:

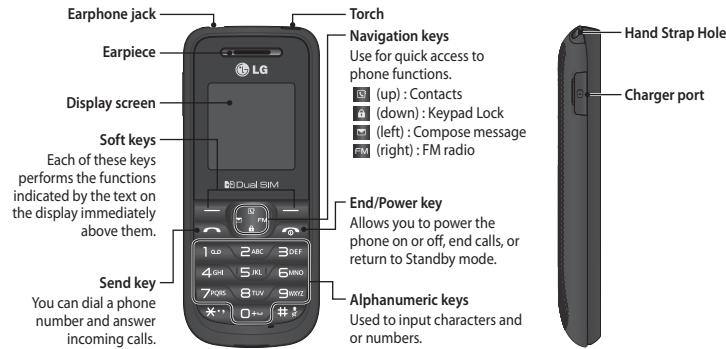
1. Enter emergency number 000 or 112
2. Press **Send key** to dial the emergency number.

P/N: MFL67217613 (1.0)

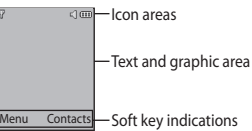


www.lg.com

Getting to know your phone



Display Information



On-Screen Icons

	Tells you the strength of the network signal.
	Indicates the battery charge level.
	Indicates new text message(s).
	Indicates new voice message(s).
	Indicates that the alarm clock is set.
	Indicates that your phone is using the general profile.
	Indicates that your phone is using the silent profile.
	Indicates that your phone is using the outdoor profile.
	Indicates that your phone is using the headset profile.
	Indicates that all calls are being diverted to another number.
	Indicates that your phone is in Flight mode.
	Indicates new schedule(s).

Changing your call settings

Press **Menu**, select **Settings>Call** and choose **SIM1** or **SIM2**.

- **Call divert** – Select methods for diverting calls.
- **Call barring** – Choose a barring password for all outgoing calls, outgoing international, outgoing international except to home country, all incoming calls, or incoming when abroad.
- **Call waiting** – Select Active or cancel call waiting.
- **Fixed dial number** – Restrict calls only to numbers in the Fixed dial number list.

Checking your call history

Press **Menu**, select **Call history**. You can check the record of **All calls**, **Missed calls**, **Dialled calls**, **Received calls**, and **Call duration**. The number and name (if available) are displayed together with the date and time at which the call was made. You can also view the number of times you have called a particular number.

- 3 To scroll through your contacts, use the up and down navigation keys. To scroll through the contact's different numbers, use the left and right navigation keys.
- 4 Press **Call** to initiate the call.

Answering and rejecting a call

When your phone rings, press **Accept** or press **Reject** to answer the call. While your phone is ringing, select **Silent** to mute the ringing. This is great if you have forgotten to change your profile to **Silent** for a meeting.

Press **Reject** or **Reject** to reject the incoming call.

TIP! You can change the settings on your phone to answer your calls in different ways. Press **Menu**, select **Settings** and choose **Call**. Press **Common settings**, select **Answer mode** and choose **Any key** or **Send key only**.

- **Any key** – You can answer a call by pressing any key.
- **Send key only** – You can answer a call only by pressing the Send key.

Information

- **Service dial numbers** – Access the list of service numbers assigned by your service provider.
- **Own number** – You can save and check your own numbers on the SIM card.
- **Business card** – You can save and check your business card containing information including your name, mobile phone, home, office and email, and send it in a message.

Call history

You can view the records of **All calls**, **Missed calls**, **Dialled calls**, **Received calls**, and **Call duration**. The number and name (if available) are displayed together with the date and time at which the call was made. You can also view the number of times you have called a particular number.

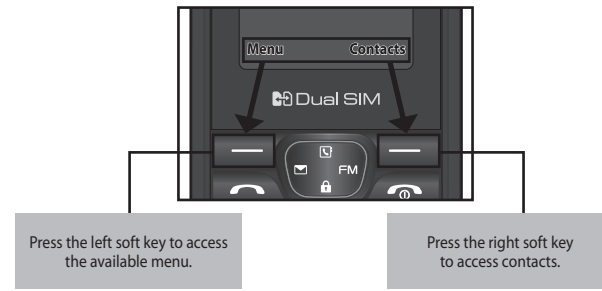
- **All calls** – Displays the lists of all call types by time.
- **Missed calls** – This option lets you view the last 20 unanswered calls.
- **Dialled calls** – This option lets you view the last 20 outgoing calls (called or attempted).
- **Received calls** – This option lets you view the last 20 incoming calls.
- **Call duration** – Allows you to view the duration of your last call, all calls, dialled calls and received calls.

Games

Your LG-A190 comes with preloaded games to keep you amused when you have time to spare. Press **Menu** and select **Games**.

Menu and Options

Your phone offers a set of functions that allow you to customise it. These functions are arranged in menus and sub-menus, which are accessed via the left and right soft keys. The label at the bottom of the display screen immediately above the soft keys indicates their current function.



Quick feature reference

Messaging

Sending a message

- 1 Press **Menu**, select **Messaging** and choose **New message**.
- 2 A new SMS message editor will open.
- 3 Enter your message using either the T9 predictive, Abc manual, or 123 text editing modes. You can switch text input modes by pressing **##**.
- 4 Press **Options** and choose **Insert** to add **Symbol**, **Template**, **Contact**, or **Business card**.
- 5 Press **Send**.
- 6 Enter the phone number or press **Options** and select **Contacts** or **Recent list** to open your contacts list.
- 7 Press **Options** and choose **Send**.

- **Inbox** – You will be alerted when new messages are received and saved to your Inbox.
- **Drafts** – This menu shows your saved draft messages.
- **Outbox** – This menu allows you to view the message which is about to be sent or that have failed to send.
- **Sent** – This menu allows you to view the messages which have already been sent, including time and content.
- **Listen voicemail** – This menu provides you with a quick way to access your voice mailbox.

FM radio (Wireless FM)

With embedded FM antenna, you can receive FM radio without an external earphone. You can listen to your favourite radio station anytime.

Note: In weak FM radio signal area it is advisable to insert an external earphone for better and enhanced FM quality.

Listening to the radio

- 1 Press **Menu** then **FM radio**, or press the **FM** key (right navigation key on standby screen), then confirm to play sound or **No** to exit.
- 2 Select **Options > Auto scan** then confirm auto scan now to scan for FM channels or **No** to cancel.
- 3 When your phone detects a channel, it will pop-up asking to save the channel. Confirm save or skip save by selecting **No**.
- 4 Select the channel by pressing the appropriate channel number on the keypad or by using the **left** or **right** navigation keys.

Note: Your phone can only store a maximum of 12 channels. Device will stop auto scanning when all 12 channels have been saved or when it cannot detect any more FM channels

Note: You can listen to the radio via built-in speaker. Press **Options**, select **Listen via** and choose **Speaker**.

Installing the SIM Card and Charging the Battery

Installing the SIM Card

When you subscribe to a mobile phone network, you are provided with a plug-in SIM card which is loaded with your subscription details, such as your PIN, and any optional services available.

Important! The plug-in SIM card and its contacts can easily be damaged by scratches or bending, so be careful when handling, inserting or removing the card. Keep all SIM cards out of the reach of small children.

- 1 Open battery cover
- 2 Remove the battery
- 3 Insert your SIM
- 4 Insert the battery
- 5 Close the battery cover
- 6 Charge your battery

WARNING: Do not remove the battery while the phone is switched on, as this may damage the phone.



You can enter alphanumeric characters via the phone's keypad. For example, storing names in **Contacts**, writing a message and scheduling events in the calendar all require entering text. To change text editing modes press the **##** key. The input method is displayed in the upper right corner of your phone.

Indicator	Function (English Smart mode)
123	Numeric
Abc	Multitap Abc
abc	Multitap abc
ABC	Multitap ABC

internal linguistic dictionary to determine the correct word, thus requiring far fewer keystrokes than the traditional ABC mode.

Turning Your Phone On and Off

You can power the phone on and off by pressing or holding the power key.

Making a Call

- 1 Key in the number using the keypad.
- 2 Press **Call** to initiate the call.
- 3 To end the call, press **End**.

TIP! To enter + when making an international call, press and hold 0.

Making a call from your contacts

- 1 Press **Call** (up) to open the address book.
- 2 On the keypad, enter the first few letters of the contact you want to call.

T9 Mode

In Editor, Press **Options** Choose "Set T9" Select On. This mode allows you to enter words with only one keystroke per letter. Each key on the keypad is associated with more than one letter. T9 mode automatically compares your keystrokes with an

- **Info messages** – Info service messages are text messages that are delivered by the network to your handset.
- **Templates** – There are pre-defined messages in the list. You can view and edit the template messages or create new messages.
- **Settings** – This menu allows you to set the features of your network service provider.

Contacts

You can search for a contact stored in your **Contacts** menu.

- 1 Select **Contacts** from the **Menu** screen or press **Call** (right soft key) from the standby screen.
 - 2 Select **Search**, then press **OK**. Using the keypad enter the first letter of the contact you want to call.
 - 3 To scroll through the contacts, use the up and down navigation keys. To scroll through their different numbers use the left and right navigation keys.
- **New contact** – You can add phonebook entries by using this menu.
 - **Speed dials** – Assign a phone book entry to any key between 2 and 8 for speed dialling. Press and hold the appropriate key to dial the contact.
 - **Copy all** – Used to copy all phone book entries between phone and SIM.
 - **Delete all** – Delete all phone book entries from phone or SIM.
 - **Memory status** – Used to check the memory status of your phone or SIM.

Profiles

To change your phone profile, select **Menu>Profiles**:

- **General** – After selecting up this profile, the indicator will be displayed on the standby screen.
- **Silent** – Ring tone is disabled and Vibrate is activated. When you select this profile, the indicator will be displayed on the standby screen.
- **Outdoor** – This is the default profile. Ring tone and key tone volume are set to maximum. When you select this profile, the indicator will be displayed on the standby screen.
- **Flight mode** – Select this profile to disable all mobile network services. You will not be able to make or receive messages or calls when **Flight mode** is switched on.
- **Headset** – This option will be available when an external earphone is inserted in the **Earphone jack**, the indicator will be displayed on the standby screen. You can personalise your call alert type, ring tones, ring volume, message alert type, message tones, message volume, keypad tones, keypad volume, effect sound volume and power on/off volume.

Tools

- **Torch** – Turn on/off the torch or turn on/off the torch directly by holding the up navigation key for 3 seconds.
- **Self call** – This is a useful function for avoiding awkward situation politely. You can call yourself by setting the time in self call menu.
- **Calculator** – This contains standard functions such as Addition, Subtraction, Multiplication and Division.

- Stopwatch** – This option allows you to use the function of a stopwatch.
- Unit converter** (Menu > Tools > Unit converter) – This converts many measurement into a unit you want.
- World clock** – Allows you to determine the current time in another time zone or country.

Organiser

- Alarms** (Menu > Organiser > Alarms) – You can set up to 3 alarm clocks to go on at a specified time.
- Calendar** – When you enter this menu, a calendar appears. A square cursor is placed on the current date. You can move the cursor to another date using the navigation keys, also you can set scheduler for desired date and time.
- Memo** – You can edit and save your own memos here.

Settings

- Dual SIM** – To differentiate between your SIMs, you can change the network icon and SIM colour displayed on the top-left hand corner of the stand-by screen from this menu.
- Date & Time** (Menu > Settings > Date & Time) – You can set functions related to the date and time.
- Language** – You can change the language for the display texts in your phone. This change will also affect the Language Input mode.
- Display** – You can adjust settings for the phone display.
- Call** – Configure your call settings, see **Changing your call settings** for more information.

Guidelines for safe and efficient use (Continued)

Product care and maintenance

⚠ WARNING

- Only use batteries, chargers and accessories approved for use with this particular phone model. The use of any other types may invalidate any approval or warranty applying to the phone, and may be dangerous.
- Do not disassemble this unit. Take it to a qualified service technician when repair work is required.
- Repairs under warranty, at LG's option, may include replacement parts or boards that are either new or reconditioned, provided that they have functionality equal to that of the parts being replaced.
- Keep away from electrical appliances such as TVs, radios, and personal computers.
- The unit should be kept away from heat sources such as radiators or cookers.
- Do not drop.
- Do not subject this unit to mechanical vibration or shock.
- Switch off the phone in any area where you are required by special regulations. For example, do not use your phone in hospitals as it may affect sensitive medical equipment.
- Do not handle the phone with wet hands while it is being charged. It may cause an electric shock which could cause injury or damage your phone.
- Do not charge a handset near flammable material as the handset can become hot and create a fire hazard.
- Use a dry cloth to clean the exterior of the unit (do not use solvents such as benzene, thinner or alcohol).

Guidelines for safe and efficient use (Continued)

Blasting area

Do not use the phone where blasting is in progress. Observe restrictions, and follow any regulations or rules.

Potentially explosive atmospheres

- Do not use the phone at a petrol station.
- Do not use near fuel or chemicals.
- Do not transport or store flammable gas, liquid, or explosives in the same compartment of your vehicle as your mobile phone and accessories.

In aircraft

Wireless devices can cause interference in aircraft.

- Turn your mobile phone off before boarding any aircraft.
- Do not use it on the ground without permission from the crew.

Children

Keep the phone in a safe place out of the reach of small children. It includes small parts which may cause a choking hazard if detached.

Guidelines for safe and efficient use (Continued)

- Let the person you are speaking with know you are driving; if necessary, suspend the call in heavy traffic or hazardous weather conditions. Rain, sleet, snow, ice and even heavy traffic can be hazardous.
- Do not take notes or look up phone numbers while driving. Typing up a "to do" list or flipping through your address book takes attention away from your primary responsibility of driving safely.
- Place calls when you are not moving or before pulling into traffic. Try to plan calls when you will not be driving.
- Do not engage in stressful or emotional conversations that may be distracting. Make people you are talking with aware you are driving and suspend conversations that have the potential to divert your attention from the road.
- Use your mobile phone to call emergency services for yourself or others in the case of fire, traffic accident or medical emergencies;
 - Australia Dial (0-0-0)
 - New Zealand Dial (1-1-1)
 - International Dial (1-1-2)
 - other local emergency number.
- Remember, it is a free call when dialling emergency services from your mobile phone in Australia.
- Use your mobile phone to help others in emergencies. If you see an auto accident, crime in progress or other serious emergency where lives are in danger, call the emergency number, as you would want others to do for you.
- If you see a broken down vehicle posing no serious hazard, a broken traffic signal, a minor traffic accident where no one appears injured, or a vehicle you know to be stolen, call roadside assistance, local traffic authority or police station.

- Auto key lock** – Configure your phone to automatically lock its keypad.
- Security** – This menu allows you to set the phone security.
 - › **PIN code request** – Enable/Disable SIM PIN code request when your phone is powered on.
 - › **Phone lock** – Lock your phone with a security code **When power on, When SIM changed,** or **Immediately.** (Default security code is "0000".)
 - › **Anti-theft mobile tracker (ATMT)** – Anti-theft mobile tracker (ATMT) allows you to track your stolen phone. When someone changes the SIM in your phone without your permission, the tracking service will be activated. You will be notified by a text message sent to the default phone number you have set, without the unauthorized user's knowledge. You can activate the ATMT and configure your settings in this menu. (The default ATMT code is "0000".)
 - › **Change codes** – Change you **Security, PIN, PIN2** or **ATMT** codes.
- Power save** – Switch between power saving settings; **Always on, Night only** or **Off.** Select **Always on** to save battery power when you are not using the phone.
- Network selection** – You can choose to manually or automatically select and register on a mobile network.
- SOS service** - When SOS service is turned on, send the emergency SMS by press and holding the '9' key on your keypad, SOS mode will now be turned on. The SOS messages will be sent to the phone number(s) listed in Recipient list. While SOS mode is active, all incoming calls are automatically accepted. To exit SOS mode, on the idle screen push the end key and select Yes.
- Reset settings** – Select **Reset settings** to restore the factory settings. You need the security code to activate this function. The default number is "0000".
- Memory status** – You can check the free space and memory usage of each repository.

Guidelines for safe and efficient use (Continued)

- Do not charge the phone when it is on soft furnishings.
- The phone should be charged in a well ventilated area.
- Do not subject this unit to excessive smoke or dust.
- Do not keep the phone next to credit cards or transport tickets; it can affect the information on the magnetic strips.
- Do not tap the screen with a sharp object as it may damage the phone.
- Do not expose the phone to liquid or moisture.
- Use the accessories like earphones cautiously. Do not touch the antenna unnecessarily.

Efficient phone operation

Electronic devices

All mobile phones may get interference, which could affect performance.

- Do not use your mobile phone near medical equipment without requesting permission. Avoid placing the phone over pacemakers, for example, in your breast pocket.
- Your mobile phone may cause interference with some hearing aids.
- Minor interference may affect TVs, radios, PCs, etc.

Guidelines for safe and efficient use (Continued)

Emergency calls

Emergency calls may not be available under all mobile networks. Therefore, you should never depend solely on the phone for emergency calls. Use your mobile phone to call emergency services for yourself or others in the case of fire, traffic accident or medical emergencies

- Australia Dial (0-0-0)
- New Zealand Dial (1-1-1)
- International Dial (1-1-2)
- other local emergency number.

Remember, it is a free call when dialling emergency services from your mobile phone in Australia.

Battery information and care

- You do not need to completely discharge the battery before recharging. Unlike older batteries, there is no memory effect that could compromise the battery's performance.
- Use only LG batteries and chargers. LG chargers are designed to maximize the battery life.
- Do not disassemble or short-circuit the battery.
- Keep the metal contacts of the battery clean.
- Replace the battery when it no longer provides acceptable performance.

Accessories

These Accessories are available for use with the LG-A190.

(Items described below may be optional.)

Standard Battery	Travel Adapter	Note
		› Always use genuine LG accessories. Failure to do this may invalidate your warranty.
		› Accessories may be different in different regions; please check with our regional service company or agent for further enquiries.

Guidelines for safe and efficient use

Please read these simple guidelines. Not following these guidelines may be dangerous or illegal.

Exposure to radio frequency energy

Radio wave exposure and Specific Absorption Rate (SAR) information

This mobile phone model LG-A190 has been designed to comply with applicable safety requirements for exposure to radio waves. These requirements are based on scientific guidelines that include safety margins designed to assure the safety of all persons, regardless of age and health.

- The radio wave exposure guidelines employ a unit of measurement known as the Specific Absorption Rate, or SAR. Tests for SAR are conducted using standardised methods with the phone transmitting at its highest certified power level in all used frequency bands.
- While there may be differences between the SAR levels of various LG phone models, they are all designed to meet the relevant guidelines for exposure to radio waves.
- The SAR limit recommended by the International Commission on Non-Ionizing Radiation Protection (ICNIRP) is 2W/kg averaged over 10g of tissue.
- The highest SAR value for this model phone tested by DASY4 for use at the ear is 0.936 W/ kg (10 g) and when worn on the body is 0.856 W/kg(10 g).
- The SAR limit recommended by the Institute of Electrical and Electronics Engineers (IEEE) is 1.6 W/kg averaged over 1g of tissue.

Guidelines for safe and efficient use (Continued)

Road safety

- Do not use a hand-held phone while driving.
- Give full attention to driving.
- Use a hands-free kit.
- Pull off the road and park before making or answering a call if driving conditions allow you to do so.
- RF energy may affect some electronic systems in your vehicle such as car stereos and safety equipment.
- If your vehicle is equipped with an airbag, ensure it is not obstructed by your mobile device or accessories. It may fail or cause serious injury if obstructed when deployed.
- If you are listening to music whilst out and about, please ensure that the volume is at a reasonable level so that you are aware of your surroundings. This is particularly important when near roads.

Avoid damage to your hearing

Damage to your hearing can occur if you are exposed to loud sounds for long periods of time. Therefore we recommend not to turn the phone on or off while holding the handset close to your ear. We also recommend that music and call volumes are set to a reasonable level.

Note: Excessive sound pressure from earphones can cause hearing loss.

Guidelines for safe and efficient use (Continued)

- Recharge the battery if it has not been used for a long time to maximize usability.
- Do not expose the battery charger to direct sunlight or use it in high humidity, such as in the bathroom.
- Do not leave the battery in hot or cold places, this may deteriorate the battery performance.
- Replacing with an incorrect battery increases the chance of explosion.
- Dispose of used batteries in accordance with your local council regulations. Please recycle when possible. Do not dispose as household waste.
- If you need to replace the battery, take it to the nearest authorized LG Electronics service point or dealer for assistance.
- Always unplug the charger from the wall socket after the phone is fully charged to prevent unnecessary power consumption of the charger.
- Actual battery life will depend on network configuration, product settings, usage patterns, battery and environmental conditions.

Driver Safety Tips

Your mobile telephone gives you the powerful ability to communicate almost anywhere, anytime. But an important responsibility accompanies the benefits of mobile phones, one that every user must uphold. When driving a car, driving is your first responsibility. When using your mobile phone behind the wheel of a car, practice good common sense and remember the following tips:

- Use a hands free device to add an additional layer of convenience and safety to your wireless phone with one of the many hands free accessories available today.

Technical Data

Ambient Temperatures

› **Max** : +55°C (discharging)
+45°C (charging)

› **Min** : -10°C