



CE0168

LG-A100 User Guide - English

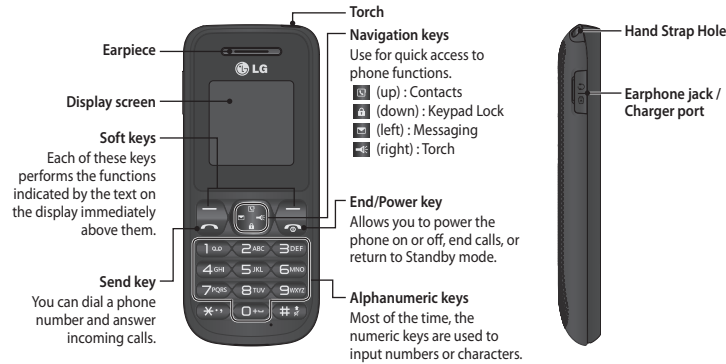
This guide will help you to understand your new mobile phone. It will provide you with useful explanations of the features on your phone. Some of the contents of this manual may differ from your phone depending on the phone software or your service provider.



www.lg.com

P/N: MFL67206621 (1.0)

Getting to know your phone



Installing the SIM Card and Charging the Battery

Installing the SIM Card

When you subscribe to a mobile phone network, you are provided with a plug-in SIM card which is loaded with your subscription details, such as your PIN, any optional services available and many others.

Important! The plug-in SIM card and its contacts can easily be damaged by scratches or bending, so be careful when handling, inserting or removing the card. Keep all SIM cards out of the reach of small children.

› only 2G SIM supported

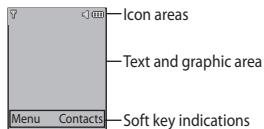
Illustrations

- 1 Open battery cover
- 2 Remove the battery
- 3 Insert your SIM
- 4 Insert the battery
- 5 Close the battery cover
- 6 Charge your battery



WARNING: Do not remove the battery while the phone is switched on, as this may damage the phone.

Display Information

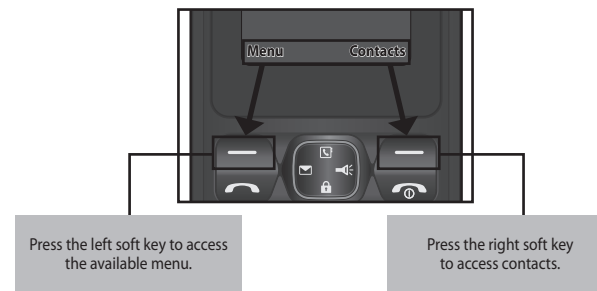


On-Screen Icons

	Tells you the strength of the network signal.
	Indicates the battery charge level.
	Indicates new text message(s).
	Indicates new voice message(s).
	Indicates that the alarm clock is set.
	Indicates that your phone is using the general settings.
	Indicates that your phone is using the silent settings.
	Indicates that your phone is using the outdoor settings.
	Indicates that your phone is using the headset setting.
	Indicates that all calls are being diverted to another number.
	Indicates that your phone is in Flight mode.
	Indicates new schedule(s).

Menu and Options

Your phone offers a set of functions that allow you to customise it. These functions are arranged in menus and sub-menus, which are accessed via the left and right soft keys. The label at the bottom of the display screen immediately above the soft keys indicates their current function.



Entering Text

You can enter alphanumeric characters via the phone's keypad. For example, storing names in Contacts, writing a message and scheduling events in the calendar all require entering text. To change modes, press the **##** key. The input method is displayed in the upper right corner of your phone.

Indicator	Function (English Smart mode)
123	Numeric
Abc	Multitap Abc
abc	Multitap abc
ABC	Multitap ABC

T9 Mode

In Editor, Press Options Choose "Set T9" Select On. This mode allows you to enter words with only one keystroke per letter. Each key on the keypad is associated with more than one letter. T9 mode automatically compares your keystrokes with an internal linguistic dictionary to determine the correct word, thus requiring far fewer keystrokes than the traditional ABC mode.

Turning Your Phone On and Off

You can power the phone on and off by pressing or holding the power key.

Making a Call

- 1 Key in the number on the keypad.
- 2 Press **☎** to initiate the call.
- 3 To end the call, press **☎**.

TIP! To enter + when making an international call, press and hold **0**.

Making a call from your contacts

- 1 Press **☎**(up) to open the address book.
- 2 On the keypad, enter the first letter of the contact you want to call.
- 3 To scroll through your contacts, use the up and down navigation keys. And to scroll through their different numbers, use the left and right navigation keys.
- 4 Press **☎** to initiate the call.

- **Info messages** – Info service messages are text messages that are delivered by the network to your handset.
- **Templates** – There are pre-defined messages in the list. You can view and edit the template messages or create new messages.
- **Settings** – This menu allows you to set the features of your network service provider.

Contacts

You can search for a contact in your Contacts.

- 1 Press **☎** and choose **Search**, select **Contacts** from the **Menu** screen or press **☎**(right soft key) from the standby screen.
 - 2 On the keypad enter the first letter of the contact you want to call.
 - 3 To scroll through the contacts, use the up and down navigation keys. To scroll through their different numbers use the left and right navigation keys.
- **Search** – You can search for a contacts in your phonebook.
 - **New contact** – You can add phonebook entries by using this menu.
 - **Speed dials** – Assign contacts to any keys between 2 and 9.
 - **Copy all** – You can copy all entries from the SIM card memory to the Phone memory or from the Phone memory to the SIM card memory.

Answering and rejecting a call

When your phone rings, press **☎** or press **☎** to answer the call. While your phone is ringing, select **Silent** to mute the ringing. This is great if you have forgotten to change your profile to **Silent** for a meeting.

Press **☎** or **Reject** to reject the incoming call.

TIP! You can change the settings on your phone to answer your calls in different ways. Press **Menu**, select **Settings** and choose **Call**. Select **Answer mode** and choose **Any key** or **Send key only**.

- **Any key** – You can answer a call by pressing any key.
- **Send key only** – You can answer a call only by pressing the Send key.

Changing your call settings

You can set the menu depending on the call. Press **Menu**, select **Settings** and choose **Call**.

- **Call divert** – Select methods for diverting calls.
- **Call waiting** – Select Active or cancel call waiting.

Checking your call history

You can check the record of all, missed, dialled, received calls and call durations. The number and name (if available) are displayed together with the date and time at which the call was made. You can also view the number of times you have called. Press **Menu**, select **Call history**.

- **Delete all** – You can delete all entries from the SIM card memory or Phone memory.
- **Memory status** – You can check the memory status for your SIM and phone.
- **Information**
 - › **Service dial numbers** – Access the list of service numbers assigned by your service provider securely.
 - › **Own number** – You can save and check your own numbers on the SIM card.
 - › **Business card** – You can save and check your business card containing information including your name, mobile phone, home, office and email, and send it in a message.

Call history

You can check the record of all, missed, dialled, received calls and call durations. The number and name (if available) are displayed together with the date and time at which the call was made. You can also view the number of times you have called.

- **All calls** – Displays the lists of all three types (Received/Dialled/Missed calls) by time.
- **Missed calls** – This option lets you view the last 20 unanswered calls.
- **Dialled calls** – This option lets you view the last 20 outgoing calls (called or attempted).
- **Received calls** – This option lets you view the last 20 incoming calls.
- **Call duration** – Allows you to view the duration of your incoming and outgoing calls.

Quick feature reference

Messaging

Sending a message

- 1 Press **☎**, select **Messaging** and choose **New message**.
 - 2 A new message editor will open. The default setting of the message editor is SMS mode.
 - 3 Enter your message using either the T9 predictive mode or Abc manual mode or 123 mode. You can switch text input modes by pressing **##**.
 - 4 Press **Options** and choose **Insert** to add an **Symbol**, **Template**, **Contact**, **Business card**.
 - 5 Press **Send to**.
 - 6 Enter the phone number or press **Options** and select **Contacts** or **Recent list** to open your contacts list.
 - 7 Press **Options** and choose **Send**.
- **Inbox** – You will be alerted when you have received a message. It will also be saved here.
 - **Drafts** – This menu shows the message you have saved.
 - **Outbox** – This menu allows you to view the message which is about to be sent or could not be sent.
 - **Sent** – This menu allows you to view the messages which have already been sent, including time and content.
 - **Listen voicemail** – This menu provides you with a quick way to access your voice mailbox.

Games

Your LG-A100 comes with preloaded games to keep you amused when you have time to spare. Press **Menu** and select **Games**.

Profiles

You change your profile, then choose from General, Silent, Outdoor, Flight mode and Headset.

- **General** – After setting up this profile, the indicator will be displayed on the standby screen.
- **Silent** – Ring tone is disabled and Vibrate is activated. When you set up this profile, the indicator will be displayed on the standby screen.
- **Outdoor** – This is the default profile. Ring tone and key tone volume are set to maximum. When you set up this profile, the indicator will be displayed on the standby screen.
- **Flight Mode** – When you set up this profile, the indicator will be displayed on the standby screen.
- **Headset** – When the headset is connected to the phone, the indicator will be displayed on the standby screen. You can personalise your call alert type, ring tones, ring volume, message alert type, message tones, message volume, keypad tones, keypad volume, effect sound volume and power on/off volume.

Tools

- **Torch** – Turn on/off the torch directly by holding the right navigation key.
- **Calculator** – This contains the standard functions such as Addition, Subtraction, Multiplication and Division.
- **Stopwatch** – This option allows you to use the function of a stopwatch.
- **Unit converter** – This converts any measurement into a unit you want.
- **World clock** – Allows you to determine the current time in another time zone or country.

Organiser

- **Alarms** – You can set up to 3 alarm clocks to go off at a specified time.
- **Memo** – You can register your own memos here.

Calendar

When you enter this menu, a calendar appears. A square cursor is placed on the current date. You can move the cursor to another date using the navigation keys.

Guidelines for safe and efficient use

Please read these simple guidelines. Failure to follow these guidelines may be dangerous or illegal. More detailed information is given in this manual.

WARNING

- Mobile phones must be switched off at all times in an aircraft.
- Do not hold the phone in your hand while driving.
- Do not use your phone near petrol stations, fuel depots, chemical plants or blasting operations.
- For your safety, use ONLY specified ORIGINAL batteries and chargers.
- Do not handle the phone with wet hands while it is being charged. It may cause an electric shock or seriously damage your phone.
- Keep the phone in a safe place out of reach of small children. It includes small parts which if detached may present a choking hazard.

- Do not charge the phone when it is on soft furnishings.
- The phone should be charged in a well ventilated area.

CAUTION

- Switch the phone off in any area where required by special regulations. For example, do not use your phone in hospitals or it may affect sensitive medical equipment.
- Emergency calls may not be available on all mobile networks. Therefore, you should never depend solely on the phone for emergency calls.
- Only use ORIGINAL accessories to avoid damage to your phone.
- All radio transmitters carry risks of interference with electronics in close proximity. Minor interference may affect TVs, radios, PCs, etc.

Guidelines for safe and efficient use (Continued)

Efficient phone operation

Electronics devices

- All mobile phones are susceptible to interference, which may affect performance.
- Do not use your mobile phone near medical equipment without requesting permission. Avoid placing the phone over pacemakers, i.e. in your breast pocket.
- Some hearing aids might be disturbed by mobile phones.
- Minor interference may affect TVs, radios, PCs, etc.

Road safety

- Check the laws and regulations on the use of mobile phones in the areas where you drive.
- Do not use a hand-held phone while driving.
- Give your full attention to driving.
- Use a hands-free kit, if available.

- Pull off the road and park before making or answering a call if driving conditions so require.
- RF energy may affect some electronic systems in your vehicle such as car stereos and safety equipment.
- If your vehicle is equipped with an air bag, do not obstruct with installed or portable wireless equipment. It can fail or cause serious injury due to improper performance.

If you are listening to music whilst out and about, please ensure that the volume is at a reasonable level so that you are aware of your surroundings. This is particularly imperative when near roads.

Avoid damage to your hearing

Your hearing may be damaged if you are exposed to loud sounds for long periods of time. We therefore recommend that you do not turn the handset on or off close to your ear. We also recommend that music and call volumes are set to a reasonable level.

Note: Excessive sound pressure from earphones can cause hearing loss.



Disposal of your old appliance

1. When this crossed-out wheeled bin symbol is attached to a product it means the product is covered by the European Directive 2002/96/EC.
2. All electrical and electronic products should be disposed of separately from the municipal waste stream via designated collection facilities appointed by the government or the local authorities.
3. The correct disposal of your old appliance will help prevent potential negative consequences for the environment and human health.
4. For more detailed information about disposal of your old appliance, please contact your city office, waste disposal service or the shop where you purchased the product.



Disposal of waste batteries/accumulators

1. When this crossed-out wheeled bin symbol is attached to batteries/accumulators of Your product it means they are covered by the European Directive 2006/66/EC.
2. This symbol may be combined with chemical symbols for mercury(Hg), cadmium(Cd) or lead(Pb) if the battery Contains more than 0.0005% of mercury, 0.002% of cadmium or 0.004% of lead.
3. All batteries/accumulators should be disposed separately from the municipal waste stream via designated collection facilities appointed by the government or the local authorities.
4. The correct disposal of Your old batteries/accumulators will help to prevent potential negative consequences for the environment, animal and human health.
5. For more detailed information about disposal of Your old batteries/accumulators, please contact Your city office, waste disposal service or the shop where You purchased the product.

Settings

- **Date & Time** – You can set functions relating to the date and time.
- **Language** – You can change the language for the display texts in your phone. This change will also affect the Language Input modes.
- **Display** – You can adjust settings for the phone display.
- **Call** – You can set the menu depending on the call.
- **Auto key lock** – Lock the keypad automatically in standby screen.
- **Security** – This menu allows you to set the phone securely.
 - › **PIN code request** – Choose a PIN code to be requested when you turn your phone on.
 - › **Phone lock** – Choose a security code to lock your phone, When power on, When SIM changed or Immediately.
 - › **Call barring** – Choose a barring password for all outgoing calls, outgoing international, outgoing international when roaming, all incoming calls, or incoming when roaming.
 - › **Fixed dial number** – Choosing a PIN2 code to enable fixed dial number lets you restrict calls to only those in Contacts.
 - › **Change codes** – Change your Security code, PIN code or PIN2 code.

Guidelines for safe and efficient use (Continued)

- Batteries should be disposed of in accordance with pertinent legislation.
- Do not dismantle the phone or battery.

Exposure to radio frequency energy Radio wave exposure and Specific Absorption Rate (SAR) information

This mobile phone model LG-A100 has been designed to comply with applicable safety requirements regarding exposure to radio waves. This requirement is based on scientific guidelines that include safety margins designed to assure this safety of all persons, regardless of age and health.

- The radio wave exposure guidelines employ a unit of measurement known as the Specific Absorption Rate, or SAR. Tests for SAR are conducted using standardised method with the phone transmitting at its highest certified power level in all used frequency bands.

- While there may be differences between the SAR levels of various LG phone models, they are all designed to meet the pertinent guidelines for exposure to radio waves.
- The SAR limit recommended by the International Commission on Non-Ionizing Radiation Protection (ICNIRP) is 2 W/Kg averaged over ten (10) gram of tissue.
- The highest SAR value for this model phone tested by DASY4 for use at the ear is 0.974 W/Kg (10g) and when worn on the body is 0.653 W/Kg (10g).
- SAR data information for residents of countries/regions that have adopted the SAR limit recommended by the Institute of Electrical and Electronics Engineers (IEEE), which is 1.6 W/Kg averaged over one (1) gram of tissue.

Guidelines for safe and efficient use (Continued)

Blasting area

Do not use the phone where blasting is in progress. Observe restrictions, and follow any regulations or rules.

Potentially explosive atmospheres

- Do not use the phone at a refuelling point. Do not use near fuel or chemicals.
- Do not transport or store flammable gas, liquid, or explosives in the compartment of your vehicle which contains your mobile phone and accessories.

In aircraft

- Wireless devices can cause interference with aircraft.
- Turn off your mobile phone before boarding any aircraft.
- Do not use it on the aircraft without permission from the cabin crew.

Accessories

There are various accessories for your mobile phone. You can select these options according to your personal communication requirements.

Standard Battery



Travel Adapter



Note

- › Always use genuine LG accessories. Failure to do this may invalidate your warranty.
- › Accessories may be different in different regions; please check with our regional service company or agent for further enquiries.

- **Power save** – If you set Always on, you can save the battery power when you are not using the phone. Choose to switch between power save settings **Always on**, **Night only** or **Off**.
- **Network selection** – You can select a network that will be registered either automatically or manually.
- **Reset settings** – Use **Reset** to restore the factory settings. You need the security code to activate this function. The default number is “0000”.
- **Memory status** – You can check the free space and memory usage of each repository.

Guidelines for safe and efficient use (Continued)

Product care and maintenance

WARNING

Only use batteries, chargers and accessories that have been approved for use with this phone model. The use of any other types may invalidate any approval or warranty applying to the phone, and may be dangerous.

- Do not disassemble this unit. Take it to a qualified service technician when repair work is required.
- Keep away from electrical appliances such as TVs, radios, and personal computers.
- The unit should be kept away from heat sources such as radiators or cookers.
- Do not drop.
- Do not subject this unit to mechanical vibration or shock.

- The coating of the phone may be damaged if it is covered with wrapping or vinyl wrapper.
- Use a dry cloth to clean the exterior of the unit. (Do not use solvents such as benzene, thinner or alcohol.)
- Do not expose this unit to excessive smoke or dust.
- Do not keep the phone next to credit cards or transport tickets; it can affect the information on the magnetic strips.
- Do not tap the screen with a sharp object; otherwise, it may damage the phone.
- Do not expose the phone to liquid or moisture.
- Use accessories such as the earphone cautiously. Do not press the antenna unnecessarily.

Guidelines for safe and efficient use (Continued)

- Do not disassemble or short-circuit the battery pack.
- Keep the metal contacts of the battery pack clean.
- Replace the battery when it no longer provides acceptable performance. The battery pack maybe recharged hundreds of times before it needs replacing.
- Recharge the battery if it has not been used for a long time to maximise usability.
- Do not expose the battery charger to direct sunlight or use it in high humidity, such as the bathroom.
- Do not leave the battery in hot or cold places as this may impair battery performance.
- There is risk of explosion if the battery is replaced by an incorrect type.
- Dispose of used batteries according to the manufacturer’s instructions. Please recycle when possible. Do not dispose as household waste.

- If you need to replace the battery, take it to the nearest authorised LG Electronics service point or dealer for assistance.
- Always unplug the charger from the wall socket after the phone is fully charged to save unnecessary power consumption by the charger.

Technical Data

Ambient Temperatures

› **Max** : +55°C (discharging)
+45°C (charging)

› **Min** : -10°C

Declaration of Conformity		LG Electronics
Supplier Details		
Name	LG Electronics Inc	
Address	LG Electronics Inc, LG Twin Towers 20, Yeouido-dong, Yeongdeungpo-gu, Seoul, Korea 150-721	
Product Details		
Product Name	GSM 900 / DCS 1800 Dual band Terminal Equipment	
Model Name	LG-A100, LG-A100, LG-A100S	
Trade Name	LG	
Applicable Standards Details		
RoHS/RE Compliance	100% RoHS	
EN 301 489-01 V1.3.1	EN 301 489-02 V1.3.1	
EN 301 511 V9.2.2	EN 301 511 V9.2.2	
EN 60950-01	EN 60950-1:2006, IEC 62369-2:2010	
EN 60950-1:2006+A11:2009		
Notifying Body Information		
This conformity to these standards is certified by the Notifying Member Body (NB) BACS Forth House Churchfield Road - Wotton on Thames, Oxford - KT12 0TD, United Kingdom Notified Body Identification Number: 0168		
Declaration		
I hereby declare under our sole responsibility that the product described above complies with the above mentioned standards and directives.	Name	Robert Oude
	Date	04. Feb. 2011
		Signature of representative
LG Electronics Logistics and Services B.V. Westerbos 16, 1327 AD, Naarn, The Netherlands		