

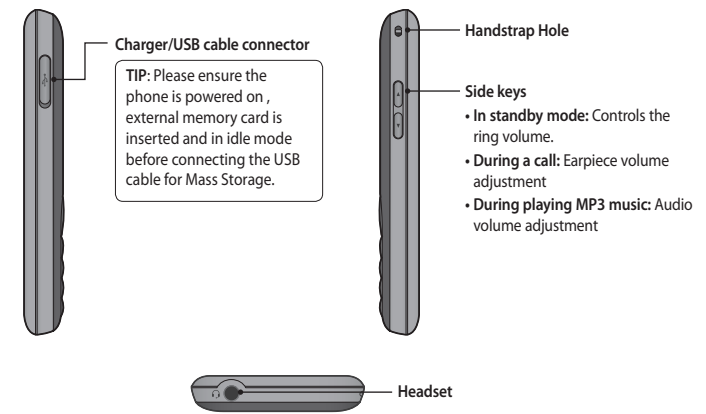
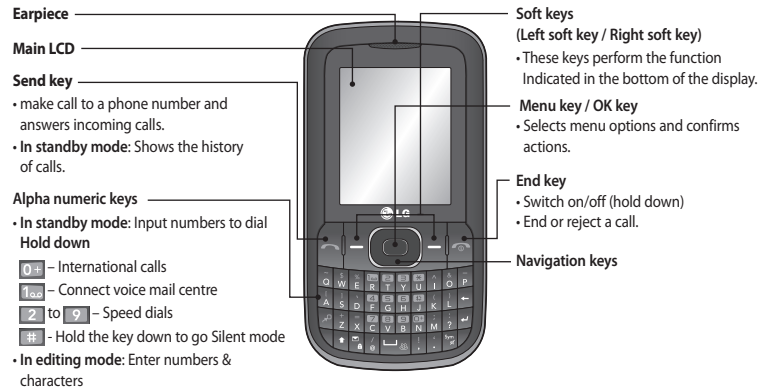
# LG-C100 User Guide

This guide will help you understand your new mobile phone. It will provide you with useful explanations of features on your phone. Some of the content of this manual may differ from your phone depending on the software of the phone or your service provider.



P/N: MMBB0392803(1.1)

## Getting to Know Your Phone



## Installing the SIM Card and Charging the Battery

### Installing the SIM Card

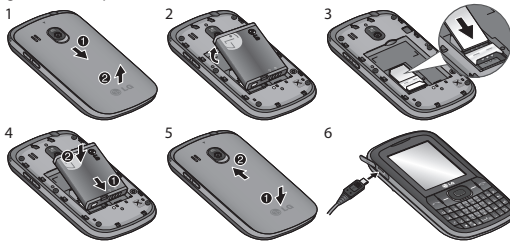
When you subscribe to a cellular network, you are provided with a plug-in SIM card loaded with your subscription details, such as your PIN, any optional services available and many others.

**Important!** The plug-in SIM card can be easily damaged by scratches or bending, so be careful when handling, inserting or removing the card. Keep all SIM cards out of the reach of small children.

### Illustrations

- 1 Open the battery cover
- 2 Remove the battery
- 3 Insert your SIM
- 4 Insert your battery
- 5 Close the battery cover
- 6 Charge your battery

> If the phone won't turn on, or if the display freezes or doesn't respond, follow the instructions for installing the battery again.



**WARNING:** Do not remove the battery when the phone is switched on, as this may damage the phone.

## Contacts

### Searching for a Contact

- 1 Press **Menu**, select **Contacts and Names**.
- 2 Using the keypad, enter the first letter of the contact you want to call.
- 3 To scroll through the contacts, use navigation keys.

### Adding a New Contact

- 1 Press **Menu**, then select **Contacts** and choose **Names**. Then press **Options - Add new contact**.
- 2 Enter all the information you have in the fields provided and select **Options-Done**.

### Adding a Contact to a Group

You can save your contacts in groups; for example, to keep your work colleagues and family separate. There are a number of groups including **Family, Friends, Colleagues, School** and **VIP** already set up on the phone.

### Playing a Song

- 1 Press **Menu** and select **Media**, then choose **Music**.
- 2 Choose **All tracks** then select the song you want to play.
- 3 Select **||** to pause the song.
- 4 Select **▶▶** to skip to the next song.
- 5 Select **◀◀** to skip to the previous song.
- 6 Select **Back** to stop the music and return to the music player menu.

### Creating a Playlist

You can create your own playlists by choosing a selection of songs from the **Media** folder.

- 1 Press **Menu** and select **Media**.
- 2 Choose **Music**, then select **Playlists**.
- 3 Press **Options** and select **Add**, then enter the playlist name and press **Save**.
- 4 The **All tracks** folder will be displayed. Select all of the songs that you would like to include in your playlist by scrolling to them and selecting **☑**.
- 5 Select **Done** to store the playlist.

## Messaging

Your LG-C100 includes text messaging, multimedia messaging and E-mail functions, and can also receive network service messages.

### Sending a Message

- 1 Press **Menu**, select **Messaging** and choose **Create message**.
- 2 Choose **Message** and a new message editor will open. The message editor combines **Text message** and **Multimedia messages** into one intuitive and easy-to-switch-between editor. The default setting for the message editor is text messages.
- 3 Enter your message.
- 4 Choose **Options - Insert** to add an **Image, Video clip, Sound clip, Schedule, Business card, Note, Text field, To-do** or **Text template**.
- 5 Press **Options - Send**.

## Camera

### Taking a Quick Photo

- 1 Select **Menu** and select **Media**. Select **Camera** to open the viewfinder.
- 2 Holding the phone, point the lens toward the subject of the photo.
- 3 Position the phone so you can see the subject of your photo.
- 4 Press the **Center** key to take a photo.

## Video Camera

### Shooting a Quick Video

- 1 In the standby screen, select **Menu** and select **Media**.
- 2 Choose **Video**.
- 3 Point the camera lens toward the subject of the video.
- 4 Press **Center** to start recording.
- 5 "Rec" will appear in the bottom-left corner of the viewfinder and a timer will show the length of your video.

## Calls

### Making a Call

- 1 Key in the number using the keypad. To delete a digit, press **CLR**.
- 2 Press **Send** to initiate the call.
- 3 To end the call, press **End**.

**TIP!** To enter + when making an international call, press and hold 0.

### Making a Call from Your Contacts

- 1 Press **Menu**, select **Contacts and Names**.
- 2 Using the keypad, enter the first letter of the contact you want to call. For example, for **Office**, press "6" three times to select the first character, "O"
- 3 Select **Options** and **Make Call** or press **Send** to initiate the call.

### Setting up Your E-mail

You can stay in touch on the move using email on your LG-C100. It's quick and simple to set up a POP3 or IMAP4 email account.

- 1 Press **Menu**, select **Messaging**, and choose **Message Settings**.
- 2 Select **E-mail** then **E-mail accounts**.
- 3 Press **Add** then set the **E-mail account**.

### Sending an E-mail Using your New Account

To send/receive an email, you should set up an email account.

- 1 Select **Menu**, select **Messaging** and choose **Create message**.
- 2 Choose **E-mail** and a new email will open.
- 3 Enter a subject.
- 4 Enter your message.
- 5 Press **Options** and select **Insert** to add an **Image, Video Clip, Sound Clip, Business card, Schedule** or **Note**.

- 6 Select **Stop** to stop recording.

## FM Radio

### Listening to the Radio

- 1 Press **Menu** and select **Media**, then choose **FM radio**.
- 2 Select the channel number of the station you would like to listen to.

**Note:** Insert Headset for better performance.

## Voice Recorder

Use your **Voice recorder** to record voice memos or other sounds.

## Gallery

You can store any kind of media file on your phone's memory to give you easy access to all of your images, sounds, videos, games etc. You can also save your files to a memory card. The advantage of using a memory card is

### Answering and Rejecting a Call

When your phone rings, press **Send** to answer the call. You can control the volume by pressing the **Up** and **Down** Navigation keys. Press **End** or select **Reject** to reject the incoming call.

**TIP!** You can change the settings on your phone to answer your calls in different ways. Press **Menu**, select **Settings** and choose **Call**. Select **Answer Mode** and choose from **Press Send Key** or **Press any Key**.

### Speed Dialing

You can assign a speed dial number to a contact you call frequently.

- 6 Press **Add** to enter the recipient's address, or press **Options** and **Add Recipient** to open your contacts list.
- 7 Press **Send** and your email will be sent.

### Entering Text

You can enter alphanumeric characters using the phone's keypad. The following text input methods are available on the phone: **ABC manual mode** and **123 mode**.

**Note:** Some fields may allow only one text input mode (e.g. telephone numbers in the address book fields).

### ABC Manual Mode

This mode allows you to enter letters by pressing the key labeled with the required letter once, twice, three or four times until the letter is displayed.

that you can free up space on your phone's memory. All your multimedia files will be saved in the **Gallery**. Press **Menu** then select **Gallery** to open a list of folders.

### My Memory Card

If you have inserted a memory card, it will be displayed as a folder in the **Gallery**.

### My Images

The **Images folder** contains a folder of default images on your phone, images downloaded by you, and images taken on your phone's camera.

### My Sounds

The **Sounds folder** contains default sounds, your voice recordings, radio recordings and sound files downloaded by you. From here you can manage and send sounds, or set them as ringtones.

### My Videos

The **Videos folder** shows the list of downloaded videos and videos you have recorded on your phone.

### Viewing your Call History

You can only check the log of missed, received and dialed calls if the network supports Calling Line Identification (CLI) within the service area.

### Changing the call settings

You can set call-specific functions. Press **Menu**, select **Settings** and choose **Call**.

- **Call divert** - Choose whether to divert your calls.
- **Call barring** - Select when you would like calls to be barred.
- **Fixed dial numbers** - Choose a list of numbers that can be called from your phone. You will need your PIN2 code from your operator. Only numbers included in the fixed dial list can be called from your phone.
- **Call waiting** - Be alerted when you have a call waiting. This depends on your network provider.
- **Call reject** - Set the rejected call list.
- **Send my number** - Choose whether your number will be displayed when you call someone. This depends on your network provider.
- **Auto redial** - Choose **On** or **Off**.
- **Answer mode** - Choose whether to answer the phone using **Any key** or **Send key** only.
- **Free call timer** - Choose whether or not to display the call time.
- **Minute minder** - Select **On** to hear a tone every minute during a call.
- **BT answer mode** - Set to **Hands-free** or **Handset**.
- **Save new number** - Choose **Yes** or **No**.

### 123 Mode

Type numbers using one keystroke per number. You can also add numbers while remaining in letter modes by pressing and holding the desired key.

### Message Folders

Press **Menu** and select **Messaging**. The folder structure used on your LG-C100 is fairly self-explanatory.

**Inbox** - All the messages you receive are placed in your **Inbox**.

**My mailbox** - Contains all your email messages.

**Drafts** - If you don't have time to finish writing a message, you can save what you have done so far here.

**Outbox** - This is a temporary storage folder while messages are being sent. It also stores any messages that have failed to send.

**Sent items** - All the messages you send are placed in your **Sent folder**.

### Others

In the **Others folder**, you can view files that are not saved in the **Images, Sounds** or **Videos folders**.

### My Games & Apps

Your LG-C100 comes with preloaded games to keep you amused in your spare time. If you choose to download any additional games or applications they will be saved in this folder.

## Organiser

### Setting your Alarm

You can set up to five alarms to go off at a specified time

### Using the Calendar

When you enter this menu, a calendar appears. A square cursor is located on the current date.

You can move the cursor to another date using the navigation keys.

**Saved items** - You can access your saved messages, text templates and multimedia templates here.

**Emoticons** - A list of useful pre-written emoticons that can be used for a quick reply.

## Media

### Music

Your LG-C100 has a built-in **Music** player so you can play all your favorite music.

**NOTE:** Music file copyrights may be protected by international treaties and national copyright laws. Therefore, it may be necessary to obtain permission or a licence to reproduce or copy music. In some countries, national laws prohibit private copying of copyrighted material. Before downloading or copying the file, please check the national laws of the relevant country concerning the use of such material.

### Adding an Item to Your To-Do List

You can view, edit and add tasks to do.

### Using the Calculator

The calculator provides the basic arithmetic functions-addition, subtraction, multiplication and division-as well as scientific functions.

### Using the Stopwatch

This option allows you to use stopwatch functions.

### Converting Units

This can convert many measurements into the unit you want.

### Adding a City to Your World Time

You can add a required city to the list of world clocks. You can also check the current Greenwich Mean Time (GMT) and the time in major cities around the world.

## Web

### Accessing the Web

You can launch the WAP browser and access the homepage of the activated profile on web settings. You can also manually enter a URL address and access the associated WAP page.

- 1 Press **Menu** and select **Web**.
- 2 To access the web homepage directly, select **Options** - **Home**. Alternately, select **Go to address** and type in your desired URL.

## Connectivity

### Changing your Connectivity Settings

USB connection mode

- 1 Mass storage: Select Mass storage and connect the handset to your computer. You can then drag and drop files to the LG-C100 removable device folder.

## Guidelines for Safe and Efficient Use

### Exposure to Radio Frequency Energy

#### Radio Wave Exposure and Specific Absorption Rate (SAR) Information

This LG-C100 mobile phone model has been designed to comply with the applicable safety requirements for exposure to radio waves. These requirements are based on scientific guidelines that include safety margins designed to ensure the safety of all users, regardless of age and health.

- The radio wave exposure guidelines employ a unit of measurement known as the Specific Absorption Rate, or SAR. SAR tests are conducted using standardized methods with the phone transmitting at its highest certified power level in all used frequency bands.

### Avoid Damage to Your Hearing

Damage to your hearing can occur if you are exposed to loud sounds for long periods of time. We therefore recommend that you do not turn the handset on or off when it is close to your ear. We also recommend that music and call volumes are set to a reasonable level.

### Blasting Area

Do not use the phone where blasting is in progress. Observe restrictions, and follow the rules and regulations

### Potentially Explosive Atmospheres

- Do not use the phone at a refueling point.
- Do not use near fuel or chemicals.
- Do not transport or store flammable gas, liquid, or explosives in the same compartment of your vehicle as your mobile phone and accessories.

## Technical Data

### Ambient Temperatures

- › **Max:** +55°C (discharging) +45°C (charging)
- › **Min:** -10°C

### Bluetooth QD ID B016785

- 2 PC Suite: Select PC Suite and connect the handset to your computer in PCsync mode.
- 3 Always ask: Selecting this option will allow you to choose which method to use every time you connect your handset to your computer.

**Note:** To use the USB mass storage function, you will need to insert an external memory card in your phone.

### Changing Your Bluetooth Settings

- 1 Press **Menu** and select **Settings - Connectivity**. Choose **Bluetooth**.
- 2 Choose **Settings** for the following options:
  - **My device's visibility** - Choose whether to show or hide your device to others.
  - **My device's name** - Enter a name for your LG-C100.
  - **Supported services** - Shows what services are supported.
  - **My address** - View your Bluetooth address.

- While there may be differences between the SAR levels for various LG phone models, they are all designed to meet the relevant guidelines for exposure to radio waves.
- The SAR limit recommended by the International Commission on Non-Ionizing Radiation Protection (ICNIRP) is 2 W/kg averaged over 10 g of tissue.
- The highest SAR value for this phone model tested by DASy4 for use close to the ear is 0.908 W/kg (10 g), and when worn on the body is 0.599 W/kg (10 g).
- SAR data information for residents in countries/regions that have adopted the SAR limit recommended by the Institute of Electrical and Electronics Engineers (IEEE), which is 1.6 W/kg averaged over 1 g of tissue.

### In Aircraft

Wireless devices can cause interference to aircraft.

- Turn your mobile phone off before boarding any aircraft.
- Do not use it on the aircraft without permission from the crew.

### Children

Keep the phone in a safe place out of the reach of small children. It includes small parts which may cause a choking hazard if detached.

### Emergency Calls

Emergency calls may not be available under all mobile networks. You should therefore never depend solely on the phone for emergency calls. Check with your local service provider.

### Pairing with Another Bluetooth Device

By pairing your LG-C100 and another device, your handset will create a password by default every time you connect to another handset via Bluetooth.

- 1 Check your Bluetooth is On and Visible. You can change your visibility in the Settings menu by selecting My phone's visibility and then Visible.
- 2 Select Paired devices from the Bluetooth menu.
- 3 Your LG-C100 will search for devices. When the search is complete, Add and Refresh will appear on the screen.
- 4 Choose the device you want to pair with, select Add, enter the passcode and then press the Center key. When you have chosen a device you want to pair with, the handset will then create a password by default every time you connect.
- 5 Your phone will then connect to the other device. The same passcode will need to be entered on this device. When you have chosen a device you want to pair with, the handset will then create a password by default every time you connect.

### Product Care and Maintenance

**WARNING:** Only use batteries, chargers and accessories approved for use with this particular phone model. The use of any other types may invalidate any approval or warranty applying to the phone, and may be dangerous.

- Do not disassemble this unit. Take it to a qualified service technician when repair work is required.
- Keep away from electrical appliances such as TVs, radios and personal computers.
- The unit should be kept away from heat sources such as radiators or cookers.
- Do not drop.
- Do not subject this unit to mechanical vibration or shock.

### Battery Information and Care

- You do not need to completely discharge the battery before recharging. Unlike other battery systems, there is no memory effect that could compromise the battery's performance.
- Use only LG batteries and chargers. LG chargers are designed to maximize the battery life.
- Do not disassemble or short-circuit the battery pack.
- Keep the metal contacts of the battery pack clean.
- Replace the battery when it no longer provides acceptable performance. The battery pack maybe recharged hundreds of times until it needs replacing.
- Recharge the battery if it has not been used for a long time to maximize usability.
- Do not expose the battery charger to direct sunlight or use it in places with high humidity, such as in the bathroom.

- 6 Your passcode-protected Bluetooth connection is now ready.

## Settings

### Changing Your Profiles

You can personalize each profile setting.

- 1 Choose the **Profiles** you want and select **Edit** from **Options**.
- 2 If you activate Silent mode, the phone will vibrate only.

### Using Flight Mode

When **Flight mode** is activated, you will not be able to make calls, connect to the Internet or send messages.

- Switch off the phone in any area where you are required by special regulations. For example, do not use your phone in hospitals as it may affect sensitive medical equipment.
- Do not handle the phone with wet hands while it is being charged. It may cause an electric shock and can seriously damage your phone.
- Do not charge a handset near flammable material as the handset can become hot and create a fire hazard.
- Use a dry cloth to clean the exterior of the unit (do not use solvents such as benzene, thinner or alcohol).
- Do not charge the phone when it is on soft furnishings.
- The phone should be charged in a well-ventilated area.
- Do not subject this unit to excessive smoke or dust.
- Do not keep the phone next to credit cards or transport tickets; it can affect the information on the magnetic strips.
- Do not tap the screen with a sharp object as it may damage the phone.

- Do not leave the battery in hot or cold places, as this may deteriorate the battery performance.
- There is a risk of explosion if the battery is replaced by an incorrect type.
- Dispose of used batteries according to the manufacturer's instructions. Please recycle when possible. Do not dispose of batteries in the household waste.
- If you need to replace the battery, take it to the nearest authorized LG Electronics service point or dealer for assistance.
- Always unplug the charger from the wall socket after the phone is fully charged to save unnecessary power consumption of the charger.
- Actual battery life will depend on network configuration, product settings, usage patterns, battery and environmental conditions.

### Changing Your Security Settings

Change your security settings to keep your LG-C100 and the important information it holds protected.

- **PIN code request** - Choose a PIN code to be requested when you turn your phone on.
- **Handset lock** - Choose **On** to lock your phone with a security code.
- **Lock If SIM is changed** - Choose **On** to enter a security code when SIM changed.
- **Anti-theft mobile tracker** - When the handset is stolen, handset sends the SMS to the numbers configured by real owner. To activate the ATMT feature, you will need to set ATMT on, and configure the ATMT settings with name, primary number and secondary number. Default ATMT code is "0000." ATMT SMS will contain information about the stolen phone IMEI, current location (captured as per Cell Broadcast message) & number of the person who is using that handset.

- Do not expose the phone to liquid or moisture.
- Use accessories like earphones cautiously. Do not touch the antenna unnecessarily.

### Efficient Phone Operation

#### Electronic Devices

- Do not use your mobile phone near medical equipment without requesting permission. Avoid placing the phone over pacemakers, i.e. in your breast pocket.
- Some hearing aids might experience disturbance due to mobile phones.
- Minor interference may affect TVs, radios, PCs etc.

## Accessories

Various accessories are available for your mobile phone. These are detailed below.

### Charger



### Battery



### Data cable



#### NOTE

- Always use genuine LG accessories. Failure to do so may invalidate your warranty.
- Accessories may be different in different regions. Please check with our regional service company or agent for further enquires.


## LG MOBILE PHONE WARRANTY

### South Africa

 Life's Good

www.lgservice.com  
www.lgmobile.com

## LG Terms & Conditions

 Life's Good

Your LG mobile phone and all accessories included in this package are under LG warranty across the countries mentioned in the back of this card for a period of 12 months from purchase date (pl. refer to list of coverage at the back) and (6 months for battery). Warranty support at LG Authorized Service Centers will be provided upon presentation of this warranty card. Warranty covers only those models that are sold in that particular market.

This Warranty is not applicable if this telephone has:

1. Been mishandled, misused, willfully damaged, neglected, improperly tested, liquid damaged, repaired, altered or defaced in any way.
2. A defect arising as a result of any failure to follow instructions either in the manual or product specification.
3. A defect which has arisen from the use of non-LG approved accessories or ancillary items attached or in connection with the telephone.

## XPERIENCE

### WINNING CELLULAR SERVICE

at MONTECASINO

Thank you for buying a LG Mobile phone



Visit our LG Mobile Care Lounge

where you and your mobile phone receive five star

Service	Quality	Value	Advice
★	★	★	★

With the LG Experience Store for the latest in mobile technology, content and accessories. Qualified and experienced staff are on hand for all your mobile needs. Part of an Monte Casino, opposite No. 10th, Johannesburg. Call 011 231 0248.

 Life's Good

## Authorized Service Centers

 Life's Good

CIC No. 0800-545454 (LGLGLG)  
Tel. No. 27-11-323-8000

LG Electronics S.A (Pty) LTD  
Rand Airport Road, Raceway Industrial Park,  
Monte Carlo Drive , Gosforth Park, Germiston 1459