

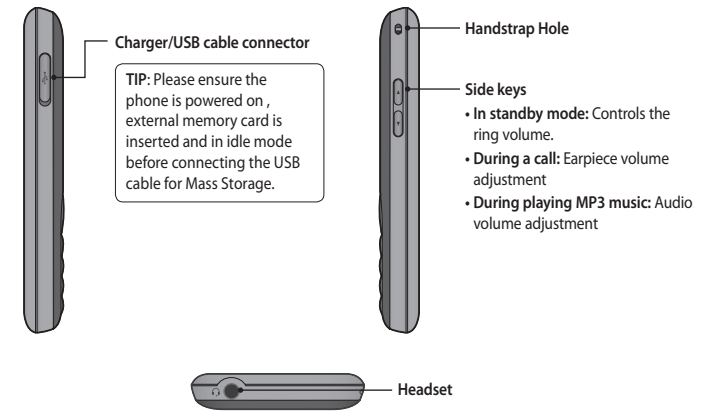
LG-C105 User Guide

This guide will help you understand your new mobile phone. It will provide you with useful explanations of features on your phone. Some of the content of this manual may differ from your phone depending on the software of the phone or your service provider.



P/N: MMBB0392819 (1.0)

Getting to Know Your Phone

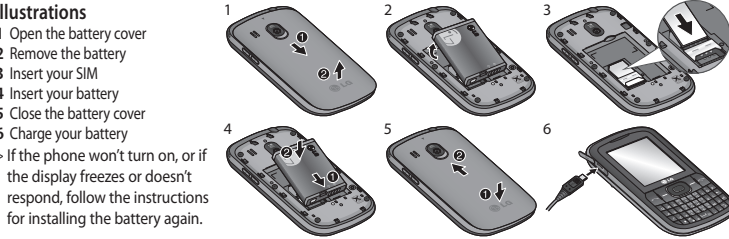


Installing the SIM Card and Charging the Battery

Installing the SIM Card

When you subscribe to a cellular network, you are provided with a plug-in SIM card loaded with your subscription details, such as your PIN, any optional services available and many others.

Important! The plug-in SIM card can be easily damaged by scratches or bending, so be careful when handling, inserting or removing the card. Keep all SIM cards out of the reach of small children.



WARNING: Do not remove the battery when the phone is switched on, as this may damage the phone.

Calls

Making a Call

- 1 Key in the number using the keypad. To delete a digit, press CLR.
- 2 Press **Send** to initiate the call.
- 3 To end the call, press **End**.

TIP! To enter + when making an international call, press and hold 0.

Making a Call from Your Contacts

- 1 Select **Names** from the Standby screen.
- 2 Using the keypad, enter the first letter of the contact you want to call.
- 3 Select **Options** and **Make Call** or press **Send** to initiate the call.

Answering and Rejecting a Call

When your phone rings, press **Send** to answer the call. You can control the volume by pressing the Up and

Down Navigation keys. Press **End** to reject the incoming call.

TIP! You can change the settings on your phone to answer your calls using Answer Mode from Call Settings.

Speed Dialing

You can assign a speed dial number to a contact you call frequently.

Viewing your Call Log

You can only check the log of missed, received and dialed calls if the network supports Calling Line Identification (CLI) within the service area.

Changing the call settings

You can set call-specific functions. Press **Menu**, select **Settings** and choose **Call**.

123 Mode

Type numbers using one keystroke per number.

Message Folders

Press **Menu** and select **Messaging**. The folder structure used on your LG-C105 is fairly self-explanatory.

Inbox - All the messages you receive are placed in your Inbox.

My mailbox - Contains all your email messages.

Drafts - If you don't have time to finish writing a message, you can save what you have done so far here.

Outbox - This is a temporary storage folder while messages are being sent. It also stores any messages that have failed to send.

Sent items - All the messages you send are placed in your Sent folder.

Saved items - You can access your saved messages, text templates and multimedia templates here.

Emoticons - A list of useful pre-written emoticons that can be used for a quick reply.

My images

The **Images folder** contains a folder of default images on your phone, images downloaded by you, and images taken on your phone's camera.

My sounds

The **Sounds folder** contains default sounds, your voice recordings, radio recordings and sound files downloaded by you. From here you can manage and send sounds, or set them as ringtones.

My videos

The **Videos folder** shows the list of downloaded videos and videos you have recorded on your phone.

Others

In the **Others folder**, you can view files that are not saved in the **Images**, **Sounds** or **Videos folders**.

- 5 Press **Options** and select **Insert** to add an **Image**, **Video Clip**, **Sound Clip**, **Business card**, **Schedule** or **Note**.
- 6 Press **To** and enter the recipient's address, or add a recipient from **Recently Used**, **Call log**, **Contacts**, **Contact groups** using press **Options** - **Add Recipient** -**To**.
- 7 Press **Send** and your email will be sent.

Entering Text

You can enter alphanumeric characters using the phone's keypad. The following text input methods are available on the phone: ABC mode and 123 mode.

Note: Some fields may allow only one text input mode (e.g. telephone numbers in the address book fields).

Abc Mode

This mode allows you to enter letters by pressing the key labeled in Qwerty Keypad.

Recording your voice memo

- 1 Press **Menu** and select **Media**, then choose **Voice recorder**.
- 2 Select **Rec.** to begin recording.
- 3 Choose **Stop** key to end the recording.
- 4 Press **Options** and select **Play** to listen to the recording.

Gallery

You can store any kind of media file on your phone's memory to give you easy access to all of your images, sounds, videos, games etc. You can also save your files to a memory card. The advantage of using a memory card is that you can free up space on your phone's memory. All your multimedia files will be saved in the **Gallery**. Press **Menu** then select **Gallery** to open a list of folders.

My memory card

If you have inserted a memory card, it will be displayed as a folder in the **Gallery**.

- **Call divert** - Choose whether to divert your calls.
- **Call barring** - Select when you would like calls to be barred.
- **Fixed dial numbers** - Choose a list of numbers that can be called from your phone. You will need your PIN2 code from your operator. Only numbers included in the fixed dial list can be called from your phone.
- **Call waiting** - Be alerted when you have a call waiting. This depends on your network provider.
- **Call reject** - Set the rejected call list.
- **Send my number** - Choose whether your number will be displayed when you call someone. This depends on your network provider.
- **Auto redial** - Choose **On** or **Off**.
- **Answer mode** - Choose whether to answer the phone using **Any key**, **Send key** only.
- **Free call timer** - Choose whether or not to display the call time.

- **Minute minder** - Set the Minute Minder to Don't Use, 30 Sec, 1 minute, 3 minutes, 5 minutes, Set time Manually to hear a tone during a call.
- **BT answer mode** - Set to Hands-free or Handset.
- **Save new number** - Choose **Yes** or **No**.

Contacts

Searching for a Contact

- 1 Select **Names** from the standby screen.
- 2 Using the keypad, enter the first letter of the contact you want to call.
- 3 To scroll through the contacts, use navigation keys.

Adding a New Contact

- 1 Press **Menu**, then select **Contacts** and choose **Names**. Then press **Options** - **Add new contact**.
- 2 Enter all the information you have in the fields provided and select **Options-Done**.

Media

Music

Your LG-C105 has a built-in Music player so you can play all your favorite music.

NOTE: Music file copyrights may be protected by international treaties and national copyright laws. Therefore, it may be necessary to obtain permission or a licence to reproduce or copy music. In some countries, national laws prohibit private copying of copyrighted material. Before downloading or copying the file, please check the national laws of the relevant country concerning the use of such material.

Playing a Song

- 1 Press **Menu** and select **Media**, then choose **Music**.
- 2 Choose **All tracks** then select the song you want to play.
- 3 Select **||** to pause the song.
- 4 Select **▶** to skip to the next song.
- 5 Select **◀** to skip to the previous song.

My games & apps

Your LG-C105 comes with preloaded games to keep you amused in your spare time. If you choose to download any additional games or applications they will be saved in this folder.

Organiser

Setting your Alarm

You can set up to five alarms to go off at a specified time

Using the Calendar

When you enter this menu, a calendar appears. A square cursor is located on the current date. You can move the cursor to another date using the navigation keys.

Adding an Item to Your To-Do List

You can view, edit and add tasks to do.

- 6 Select **Back** to stop the music and return to the All tracks.

Creating a Playlist

You can create your own playlists by choosing a selection of songs from the **All tracks** folder.

- 1 Press **Menu** and select **Media**.
- 2 Choose **Music**, then select **Playlists**.
- 3 Press **Options** and select **Add new playlist**, then enter the playlist name and press **Save**.
- 4 The **All tracks** folder will be displayed. Select all of the songs that you would like to include in your playlist by scrolling to them and selecting **Mark**.
- 5 Select **Done** to store the playlist.

Camera

Taking a Quick Photo

- 1 Select **Menu** and select **Media**. Select **Camera** to open the viewfinder.
- 2 Holding the phone, point the lens toward the subject of the photo.

Using the Calculator

The calculator provides the basic arithmetic functions-addition, subtraction, multiplication and division-as well as scientific functions.

Using the Stopwatch

This option allows you to use stopwatch functions.

Converting Units

This can convert many measurements into the unit you want.

Adding a City to Your World Time

You can add a required city to the list of world clocks. You can also check the current Greenwich Mean Time (GMT) and the time in major cities around the world.

Adding a Contact to a Group

You can save your contacts in groups; for example, to keep your work colleagues and family separate. There are a number of groups including **Family**, **Friends**, **Colleagues**, **School** and **VIP** already set up on the phone.

Messaging

Your LG-C105 includes text messaging, multimedia messaging and E-mail functions, and can also receive network service messages.

Sending a Message

- 1 Press **Menu**, select **Messaging** -**Create message** and Choose **Message**.
- 2 Choose **Message** and a new message editor will open. The message editor combines **Text message** and **Multimedia messages** into one intuitive and easy-to-switch-between editor. The default setting for the message editor is text messages.
- 3 Enter your message.

- 3 Position the phone so you can see the subject of your photo.
- 4 Press the **Center** key to take a photo.

Video Camera

Shooting a Quick Video

- 1 In the standby screen, select **Menu** and select **Media**.
- 2 Choose **Video**.
- 3 Point the camera lens toward the subject of the video.
- 4 Press **Center** to start recording.
- 5 "Rec" will appear on the viewfinder and a timer will show the length of your video.
- 6 Select **Stop** to stop recording.

FM Radio

Your LG-C105 has an FM radio feature so you can tune into your favourite stations and listen on the move.

- 1 Press **Menu** and select **Media**, then choose **FM radio**.

- 4 Choose **Options** - **Insert** to add an **Image**, **Video clip**, **Sound clip**, **Schedule**, **Business card**, **Note**, **Text field**, **To do** or **Text template**.
- 5 Press **Options** - **Send**.

Setting up Your E-mail

You can stay in touch on the move using email on your LG-C105. It's quick and simple to set up a POP3 or IMAP4 email account.

- 1 Press **Menu**, select **Messaging**, and choose **Message Settings**.
- 2 Select **E-mail** then **E-mail accounts**.
- 3 Press **Add** then set the **E-mail account**.

Sending an E-mail Using your New Account

To send/receive an email, you should set up an email account.

- 1 Select **Menu**, select **Messaging** and choose **Create message**.
- 2 Choose **E-mail** and a new email will open.
- 3 Enter a subject.
- 4 Enter your message.

- 2 Select **Option** and choose **Auto scan** then select **Yes**. You can also use the left and right navigation keys to search for stations.

Listening to the Radio

- 1 Press **Menu** and select **Media**, then choose **FM radio**.
- 2 Select the channel number of the station you would like to listen to.

Note: You will need to insert your headset in order to listen to the radio. Insert the plug into the headset connector in order to listen to the radio and keep the good radio reception.

Note: Insert Headset for better performance.

Voice Recorder

Use your **Voice recorder** to record voice memos or other sounds.

Web

Accessing the Web

You can launch the WAP browser and access the homepage of the activated profile on web settings. You can also manually enter a URL address and access the associated WAP page.

- Press **Menu** and select **Web**.
- To access the web homepage directly, select **Home**. Alternately, select **Go to address** and type in your desired URL.

Connectivity

Changing your Connectivity Settings

USB connection mode

- Mass storage: Select Mass storage and connect the handset to your computer. You can then drag and drop files to the LG-C105 removable device folder.
- PC Suite: Select PC Suite and connect the handset to your computer in PCSync mode.

Viewing your phone files on your PC

- Connect the USB cable to your phone and your PC.
- Select the **PC suite** from the popup menu in your phone.
- After searching the phone it will be connected automatically.

TIP! Viewing the contents of your phone on your PC helps you to arrange files, organise documents and remove contents you no longer need.

- Always ask: Selecting this option will allow you to choose which method to use every time you connect your handset to your computer.

Note: To use the USB mass storage function, you will need to insert an external memory card in your phone.

Changing Your Bluetooth Settings

- Press **Menu** and select **Settings - Connectivity**. Choose **Bluetooth**.
- Choose **Settings** for the following options:
 - My device's visibility** - Choose whether to show or hide your device to others.
 - My device name** - Enter a name for your LG-C105.
 - Supported services** - Shows what services are supported.
 - My address** - View your Bluetooth address.

Phone Software update

LG Mobile Phone Software update from internet

For more information on using this function, please visit the <http://update.lgmobile.com> or <http://www.lg.com/common/index.jsp> → select country → Support This Feature allows you to update the firmware of your phone to the latest version conveniently from the internet without the need to visit a service center. As the mobile phone firmware update requires the user's full attention for the duration of the update process, please make sure to check all instructions and notes that appear at each step before proceeding. Please note that removing the USB data cable or battery during the upgrade may seriously damage you mobile phone.

- Give your full attention to driving.
- Use a hands-free kit, if available.
- Pull off the road and park before making or answering a call if driving conditions so require.
- RF energy may affect some electronic systems in your vehicle, such as car stereos and safety equipment.
- If your vehicle is equipped with an airbag, do not obstruct it with installed or portable wireless equipment. This may cause the airbag to fail or cause serious injury due to improper performance.
- If you are listening to music while out and about, please ensure that the volume is at a reasonable level so that you are aware of your surroundings. This is particularly imperative when near roads.

Avoid Damage to Your Hearing

Damage to your hearing can occur if you are exposed to loud sounds for long periods of time. We therefore recommend that you do not turn the handset on or off when it is close to your ear. We also recommend that music and call volumes are set to a reasonable level.

Technical Data

Ambient Temperatures

- Max:** +55°C (discharging) +45°C (charging)
- Min:** -10°C

Bluetooth QD ID B016785

Declaration of Conformity		LG Electronics	
Essential Details			
Name			
LG Electronics Inc.			
Address			
LG Twin Tower 20, Yeouido-dong, Yeongdeungpo-gu, Seoul, Korea 150-721			
Product Details			
Product Name			
GSMA 850 / E-GSM 900 / DCS 1800 / PCS 1900 Quad Band Terminal Equipment			
Model Name			
LG0290			
Trade Name			
LG	CE 0168		
Applicable Standards Details			
EMF/ELV Directive (90/269/EEC)	EN 301 488-01 v1.2.1 / EN 301 488-02 v1.2.1 / EN 301 488-03 v1.2.1 / EN 301 488-04 v1.2.1		
EMC Directive (2002/95/EC)	EN 55022 v1.2.1		
EMC Directive (2002/95/EC)	EN 55024 v1.2.1		
EMC Directive (2002/95/EC)	EN 301 511 v16.2.2		
Supplementary Information			
The conformity to above standards is verified by the Notifying Notified Body (NBB)			
NBB: Forth House, Church Hill Road, Millbrook-Charms, Slough, KT12 2TD, United Kingdom			
Notified Body Identification Number: 0108			
Declaration			
I hereby declare under our sole responsibility that the above mentioned items to which this declaration relates conform with the above mentioned standards and Directives.		Name	Signed Date
LG Electronics Inc. - EU Representative		Seungyeon, J. Director	16/02/2010
Willemsoom 15, 1217 AE Almere, The Netherlands		Signature of representative	

Pairing with Another Bluetooth Device

By pairing your LG-C105 and another device, your handset will create a password by default every time you connect to another handset via Bluetooth.

- Check your Bluetooth is On and Visible. You can change your visibility in the Settings menu by selecting My device visibility and then Visible.
- Select Paired devices from the Bluetooth menu.
- Your LG-C105 will search for devices. When the search is complete, Add and Refresh will appear on the screen.
- Choose the device you want to pair with, select Add, enter the passcode and then press the Center key. When you have chosen a device you want to pair with, the handset will then create a password by default every time you connect.
- Your phone will then connect to the other device. The same passcode will need to be entered on this device.
- Your passcode-protected Bluetooth connection is now ready.

Guidelines for Safe and Efficient Use

Exposure to Radio Frequency Energy

Radio Wave Exposure and Specific Absorption Rate (SAR) Information

This LG-C105 mobile phone model has been designed to comply with the applicable safety requirements for exposure to radio waves. These requirements are based on scientific guidelines that include safety margins designed to ensure the safety of all users, regardless of age and health.

- The radio wave exposure guidelines employ a unit of measurement known as the Specific Absorption Rate, or SAR. SAR tests are conducted using standardized methods with the phone transmitting at its highest certified power level in all used frequency bands.
- While there may be differences between the SAR levels for various LG phone models, they are all designed to meet the relevant guidelines for exposure to radio waves.

Emergency Calls

Emergency calls may not be available under all mobile networks. You should therefore never depend solely on the phone for emergency calls. Check with your local service provider.

Battery Information and Care

- You do not need to completely discharge the battery before recharging. Unlike other battery systems, there is no memory effect that could compromise the battery's performance.
- Use only LG batteries and chargers. LG chargers are designed to maximize the battery life.
- Do not disassemble or short-circuit the battery pack.
- Keep the metal contacts of the battery pack clean.
- Replace the battery when it no longer provides acceptable performance. The battery pack may be recharged hundreds of times until it needs replacing.
- Recharge the battery if it has not been used for a long time to maximize usability.

Troubleshooting

This section lists some problems that you might encounter while using your phone. Some problems require that you call your service provider, but most of problems you encounter are easy to correct yourself.

Symptom	Possible causes	Possible Corrective measures
No connection to the network	Signal is weak or you're outside of the carrier network.	Move to a window or open space. Check service provider coverage map.
Codes do not match	When you want to change a security code you have to confirm the new code by entering it again. The two codes that you have entered do not match.	Contact your Service Provider.
Function cannot be set	Not supported by Service Provider or registration required.	Contact your Service Provider.
Calls not available	Dialing error or service limitations.	Check the number dialed and check the reception. Contact your service provider.
Calls not available	Dialing error New SIM card inserted Prepaid Charge limit reached	New network not authorized. Check for new restrictions. Contact Service Provider or reset limit with PIN 2.

Settings

Changing Your Profiles

You can personalize each profile setting.

- Choose the **Profiles** you want and select **Edit** from **Options**.
- If you activate Silent mode, the phone will vibrate only.

Using Flight Mode (Menu > Settings > Profiles > Flight mode)

Use this function to switch the flight mode on. You will not be able to make calls, connect to the Internet, send messages when flight mode is switched on.

Changing Your Security Settings

Change your security settings to keep your LG-C105 and the important information it holds protected.

- PIN code request** - Choose a PIN code to be requested when you turn your phone on.
- Handset lock** - Choose **On** to lock your phone with a security code.

- The SAR limit recommended by the International Commission on Non-ionizing Radiation Protection (ICNIRP) is 2 W/kg averaged over 10 g of tissue.
- The highest SAR value for this phone model tested by DASY4 for use close to the ear is 0.908 W/kg (10 g), and when worn on the body is 0.599 W/kg (10 g).
- SAR data information for residents in countries/regions that have adopted the SAR limit recommended by the Institute of Electrical and Electronics Engineers (IEEE), which is 1.6 W/kg averaged over 1 g of tissue.

Product Care and Maintenance

WARNING: Only use batteries, chargers and accessories approved for use with this particular phone model. The use of any other types may invalidate any approval or warranty applying to the phone, and may be dangerous.

- Do not disassemble this unit. Take it to a qualified service technician when repair work is required.
- Keep away from electrical appliances such as TVs, radios

- Do not expose the battery charger to direct sunlight or use it in places with high humidity, such as in the bathroom.
- Do not leave the battery in hot or cold places, as this may deteriorate the battery performance.
- There is a risk of explosion if the battery is replaced by an incorrect type.
- Dispose of used batteries according to the manufacturer's instructions. Please recycle when possible. Do not dispose of batteries in the household waste.
- If you need to replace the battery, take it to the nearest authorized LG Electronics service point or dealer for assistance.
- Always unplug the charger from the wall socket after the phone is fully charged to save unnecessary power consumption of the charger.
- Actual battery life will depend on network configuration, product settings, usage patterns, battery and environmental conditions.

- Lock If SIM is changed** - Choose **On** to enter a security code when SIM changed.

- Anti-theft mobile tracker** - When the handset is stolen, handset sends the SMS to the numbers configured by real owner. To activate the ATMT feature, you will need to set ATMT on, and configure the ATMT settings with name, primary number and secondary number. Default ATMT code is "0000." ATMT SMS will contain information about the stolen phone (IMEI, current location (captured as per Cell Broadcast message) & number of the person who is using that handset.

- Change codes** - Change your security code, PIN code, PIN2 code, Security code or Anti-theft code.

Viewing Memory Status (Menu > Settings > Memory info)

You can use the memory manager to determine how each memory is used and see how much space is available in the **Handset common memory, Handset reserved memory, SIM memory** or **Primary storage**

- and personal computers.
- The unit should be kept away from heat sources such as radiators or cookers.
- Do not drop.
- Do not subject this unit to mechanical vibration or shock.
- Switch off the phone in any area where you are required by special regulations. For example, do not use your phone in hospitals as it may affect sensitive medical equipment.
- Do not handle the phone with wet hands while it is being charged. It may cause an electric shock and can seriously damage your phone.
- Do not charge a handset near flammable material as the handset can become hot and create a fire hazard.
- Use a dry cloth to clean the exterior of the unit (do not use solvents such as benzene, thinner or alcohol).
- Do not charge the phone when it is on soft furnishings.
- The phone should be charged in a well-ventilated area.
- Do not subject this unit to excessive smoke or dust.
- Do not keep the phone next to credit cards or transport

setting. You can also set the **External memory** when the memory card is inserted.

PC Suite

Backing up and restoring your phone's information

- Connect the USB cable to your phone and your PC.
- Select the **PC suite** from the popup menu in your phone.
- After searching to phone, it will be connected automatically.
- Click on the Backup icon, and select **Backup** or **Restore**.
- Mark the contents you would like to back up or restore. Select the location you would like to backup information to, or restore information from. Click **OK**.
- Your information will be backed up.

tickets; it can affect the information on the magnetic strips.

- Do not tap the screen with a sharp object as it may damage the phone.
- Do not expose the phone to liquid or moisture.
- Use accessories like earphones cautiously. Do not touch the antenna unnecessarily.

Efficient Phone Operation

Electronic Devices

- Do not use your mobile phone near medical equipment without requesting permission. Avoid placing the phone over pacemakers, i.e. in your breast pocket.
- Some hearing aids might experience disturbance due to mobile phones.
- Minor interference may affect TVs, radios, PCs etc.



Road Safety

Check the laws and regulations on the use of mobile phones in the areas where you drive.

- Do not use a hand-held phone while driving.

Accessories

Various accessories are available for your mobile phone. These are detailed below.

	Charger	Battery
		
NOTE		
	• Always use genuine LG accessories. Failure to do so may invalidate your warranty.	
	• Accessories may be different in different regions. Please check with our regional service company or agent for further enquires.	

Symptom	Possible causes	Possible Corrective measures
Phone cannot be switched on	On/Off key pressed too briefly. Battery is not charged.	Press On/Off key for at least two seconds. Charge battery. Check charging indicator in the display.
	Battery contacts are dirty.	Clean the battery contacts.
Charging error	Battery totally empty. Contact problem.	Charge battery. Check power supply and connection to the phone. Check the battery contacts, clean them if necessary.
	No power from outlet. Charger defective. Wrong charger. Battery defective.	Plug in to a different socket or check voltage. Test with another charger. Only use original LG accessories. Replace battery.
Network connection is lost.	Signal too weak.	Reconnection to another service provider if network mode is automatic.
Number not permitted	The Fixed Dial Number function is on.	Check the Settings menu and turn the function off.