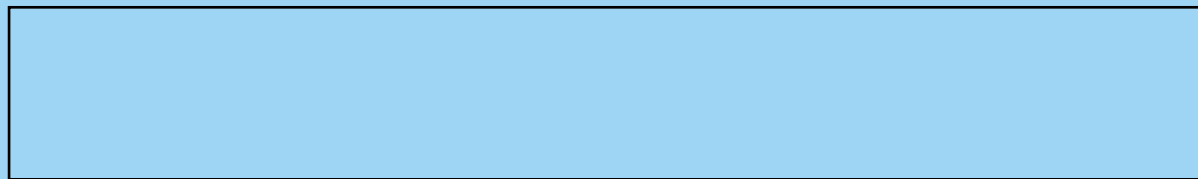


# OWNER'S MANUAL

V-CB951H\*\*/N\*\*

**Bagless vacuum cleaner**



P/No.: 3828Fi3861K

3828Fi3861K





# Table of contents

<b>Information for Your Safety</b> .....	3
<b>How to Use</b> .....	4
Assembling the cleaner .....	4
Using the cleaning head and Accessory Nozzles .....	6
How to use elbow tube, Cleaning Carpet master .....	8
Emptying the Dust Chamber .....	9
Operation .....	10
How to Plug in and use .....	10
Adjusting the Suction level .....	10
Park-System .....	10
Cleaning the Filter .....	11
Cleaning the Exhaust Filter .....	12
<b>What to Do if Your Vacuum Cleaner Does Not Work</b> .....	13
<b>What to Do if When Suction Performance Decreases</b> .....	13



# Information for Your Safety

Please read all the following information, which contains important instructions for the safety, the use and the maintenance of the appliance.

This appliance complies with the following EC Directives: -73/23/EEC, 93/68/EEC-Low Voltage Directive-89/336EEC -EMC Directive.

- ☐ Never allow children to use the appliance unsupervised.
- ☐ Do not use the appliance If the power cord is damaged or faulty.
- ☐ If the power cord is damaged, it must be replaced by an approved LG Electronics Service Agent to avoid a hazard.
- ☐ Always switch the vacuum cleaner off before:
  - Emptying the dust chamber.
  - Cleaning or changing the filters.
- ☐ Do not vacuum flammable or explosive substances(liquids or gases).
- ☐ Do not vacuum hot ash, embers etc. nor sharp objects.
- ☐ Do not vacuum water or other liquids.
- ☐ Do not unplug by pulling on cord.
- ☐ Use only LG's recommended filters.
- ☐ When you vacuum with an attachment appliance that has a rotating brush roller:
  - Do not reach into the running brush roller.
- ☐ Do not vacuum fine dust.
- ☐ Do not expose vacuum cleaner to heat.

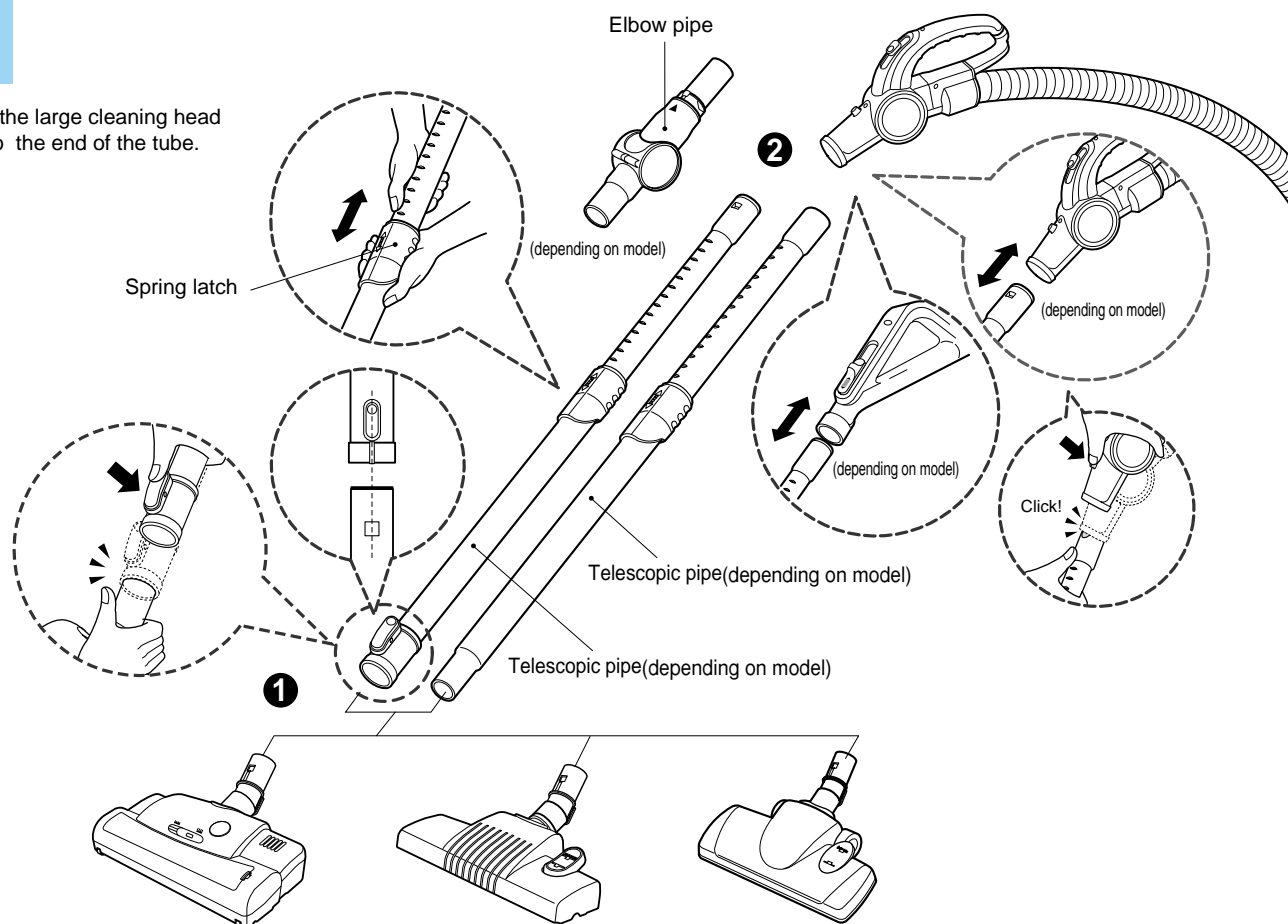
## Thermal protector:

This vacuum cleaner has a special thermostat that protects the cleaner in case of motor overheating. If the cleaner suddenly shuts off, turn off the switch and unplug the cleaner. Check the cleaner for a possible source of overheating such as a full dust chamber, a blocked hose or clogged filter. If these conditions are found, fix them and wait at least 30 minutes before attempting to use the cleaner. After the 30 minutes period, plug the cleaner back in and turn on the switch. If the cleaner still does not run, contact a qualified electrician.



## How to Use Assembling the Cleaner

Fit the large cleaning head into the end of the tube.

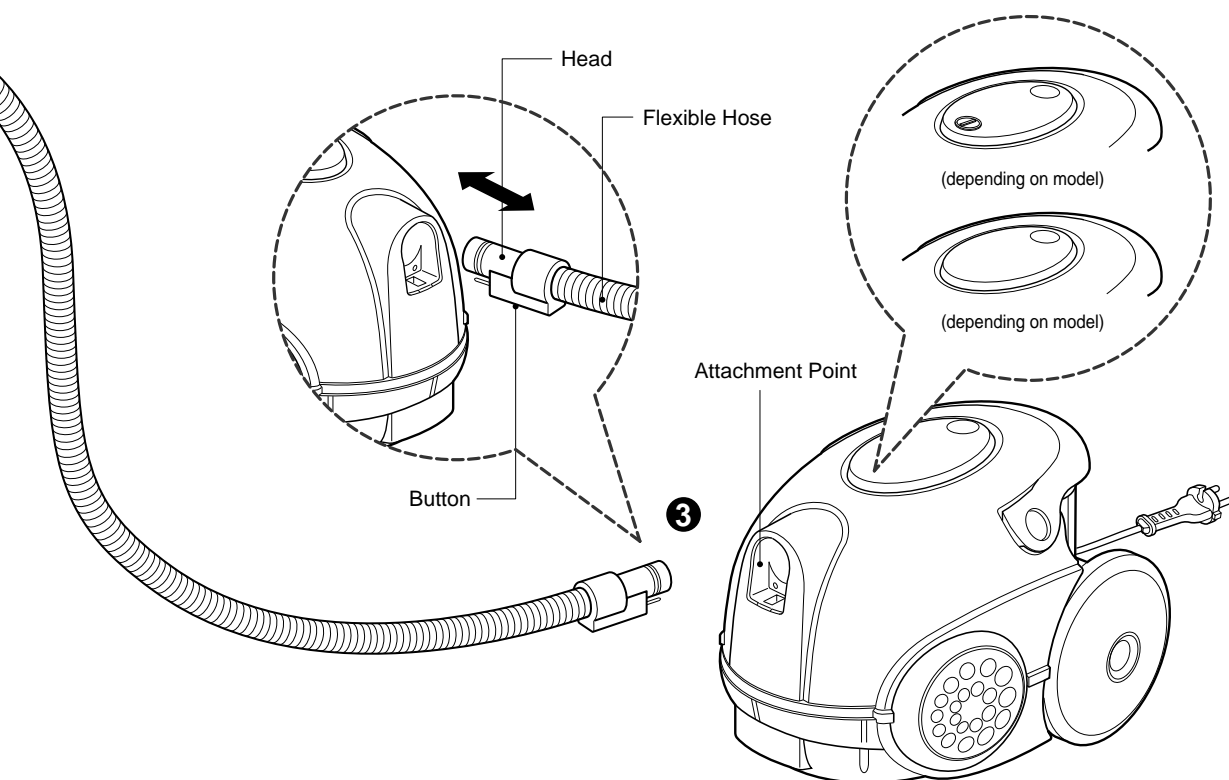


### ① The 2 position head(dependent on model)

Push telescopic tube into nozzle outlet.

### ② Telescopic tube(dependent on model)

- Press the spring latch to release.
- Pull out the tube to the desired length.
- Release spring latch to lock the tube in position.
- Push telescopic tube into hose handle firmly.



### 3 Connecting the flexible hose

- Push the end of the head on the flexible hose into the attachment point on the vacuum cleaner.
- To remove the flexible hose from the vacuum cleaner, press on the button situated on the head, then pull the head out of the vacuum cleaner.

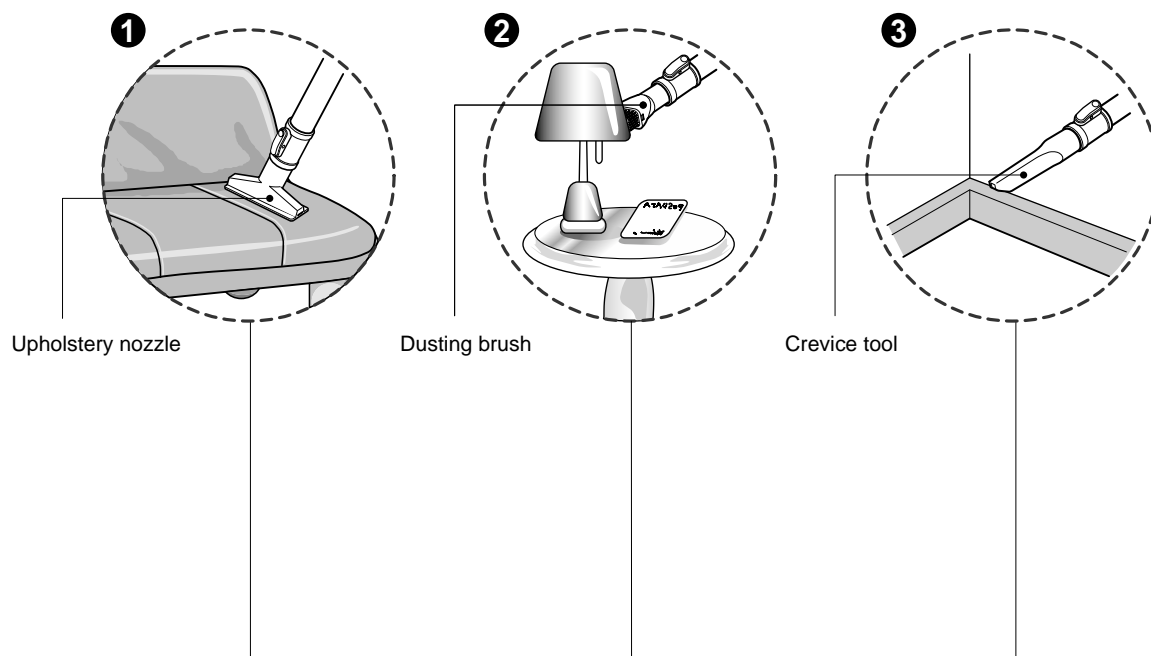


#### CAUTION

- Suction power may be weakened when insignificant dusts are sucked. In this case, clean the filter.
- Make the dust box empty if dusts are filled to the maximum degree and then clean the filter when it becomes 5 times.

## How to Use Using the cleaning head and Accessory Nozzles

Tear the vinyl bag and pull out accessories. Attach the accessory holder onto the telescopic tube. And then, fit the Dusting Brush, Crevice Tool and Upholstery Nozzle onto the accessory holder. Fit the accessory onto the end of the tube.



### ① Upholstery Nozzle

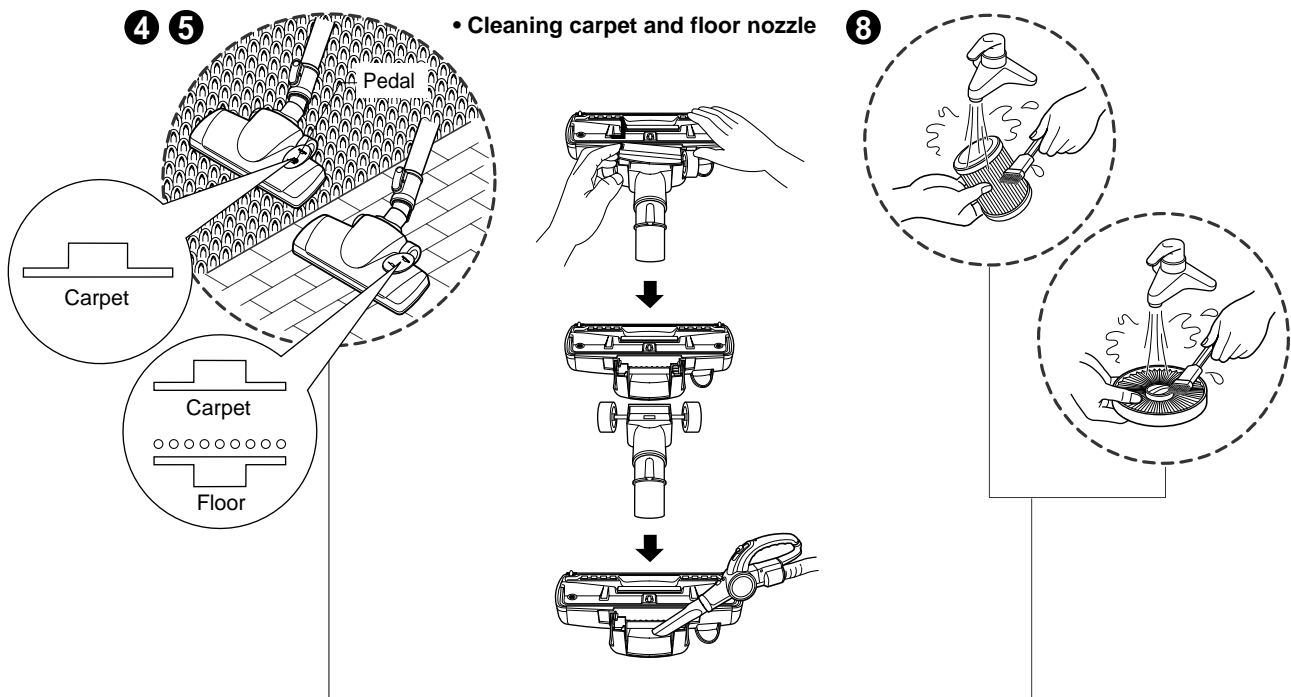
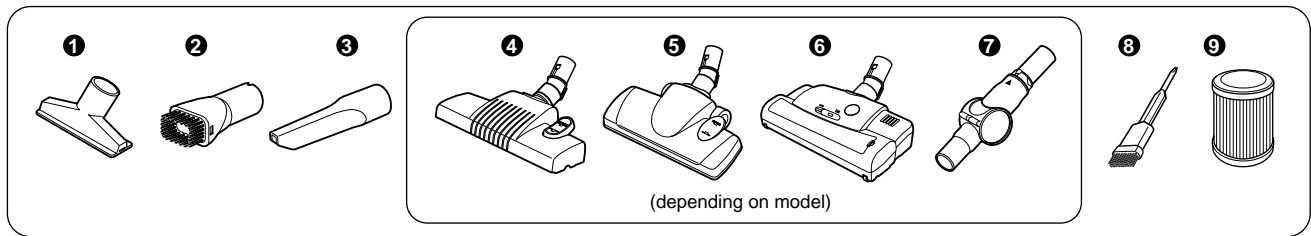
Upholstery Nozzle is for vacuuming upholstery, mattresses, etc. The thread collectors help to pick up the threads and fluff.

### ② Dusting Brush

Dusting Brush is for vacuuming picture frames, furniture frames, books and other irregular surfaces.

### ③ Crevice Tool

Crevice Tool is for vacuuming in those normally hard-to-reach places such as reaching cobwebs, or between the cushions of a sofa.



#### 4 5 Carpet and floor nozzle(dependent on model)

#### (dependent on model)

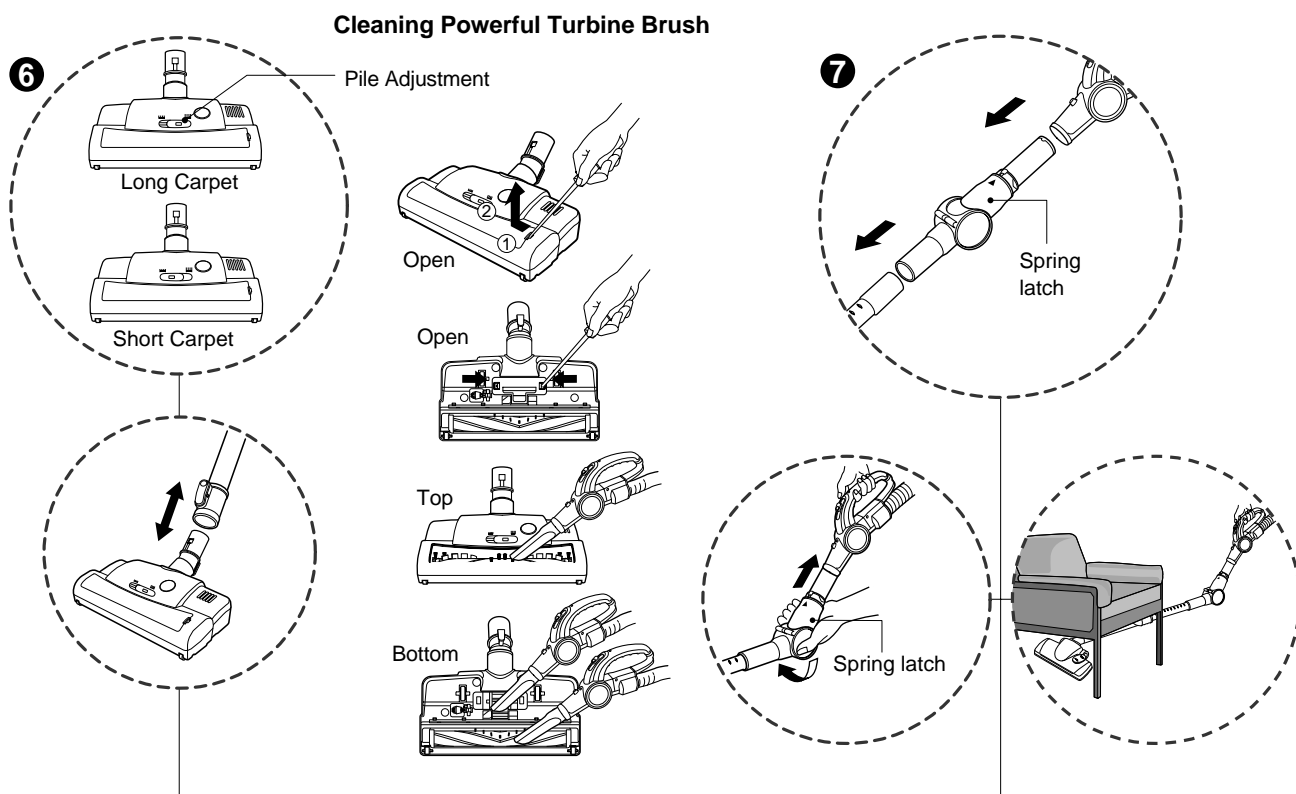
#### 8 Brush

- **The 2 position cleaning head** equipped with a pedal which allows you to alter its position according to the type of floor to be cleaned.
- **Carpet or rug position** Press the pedal to lower brush.
- **Hard floor position** (tiles, parquets floor)  
Both types are available.

- Open the cover by pulling the hook.
- Divide the nozzle into two parts
- Clean the hole of the nozzle.

- Brush is for cleaning the motor filter and exhaust filter.

## How to use Cleaning Carpet master, Elbow tube



### 6 Carpet master(dependent on model)

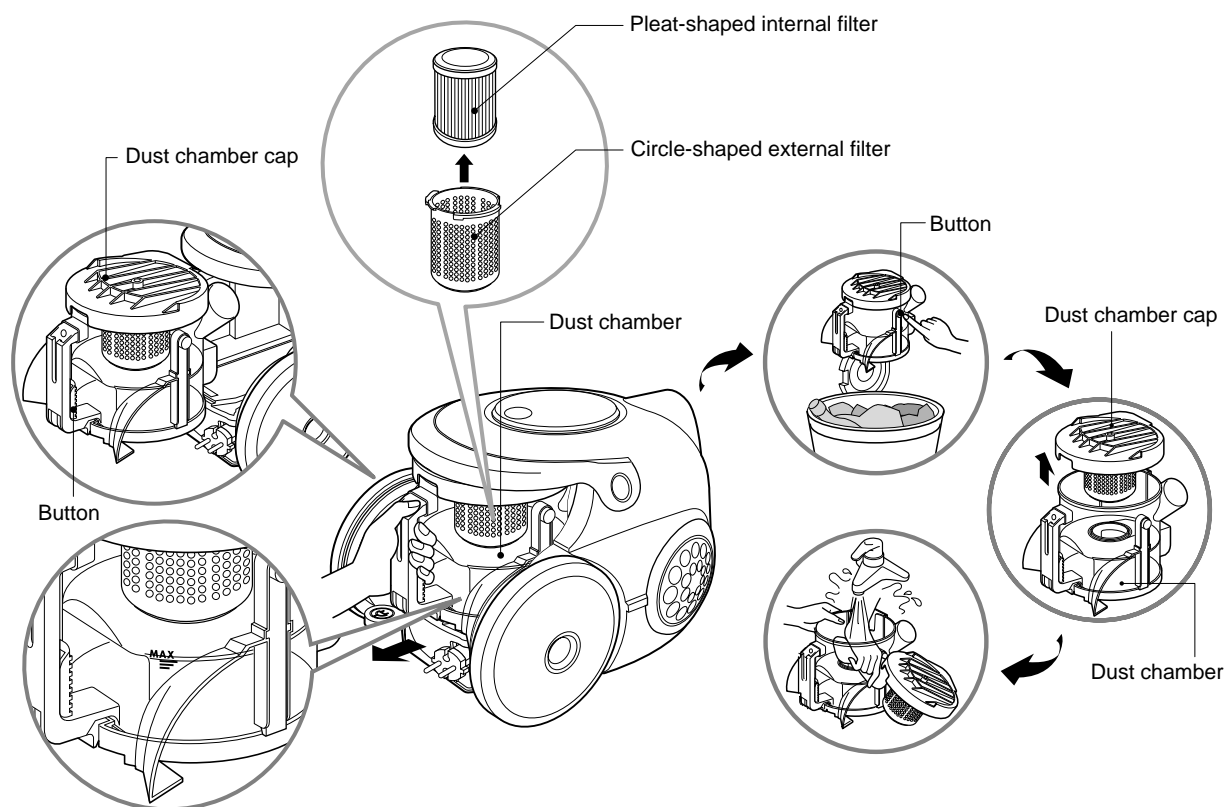
- Open the window by pulling the hook.
- Open the cover at the bottom by pulling the hook.
- Clean the brush.
- Clean the brush and hole at the bottom.
- Slide the Pile Adjustment to the right for long carpet and to the left for short carpet

### 7 Elbow tube(dependent on model)

- Elbow tube is for cleaning under the sofa, table and bed easily.
- Connect the elbow tube to the flexible hose and, connect the telescopic tube to the elbow tube. (You can also connect the telescopic tube to the flexible hose without the elbow tube.)
  - If you pull the spring latch, the elbow tube is bended.
  - If you stretch the elbow tube, it is returned to its position.



## How to Use Emptying the dust chamber

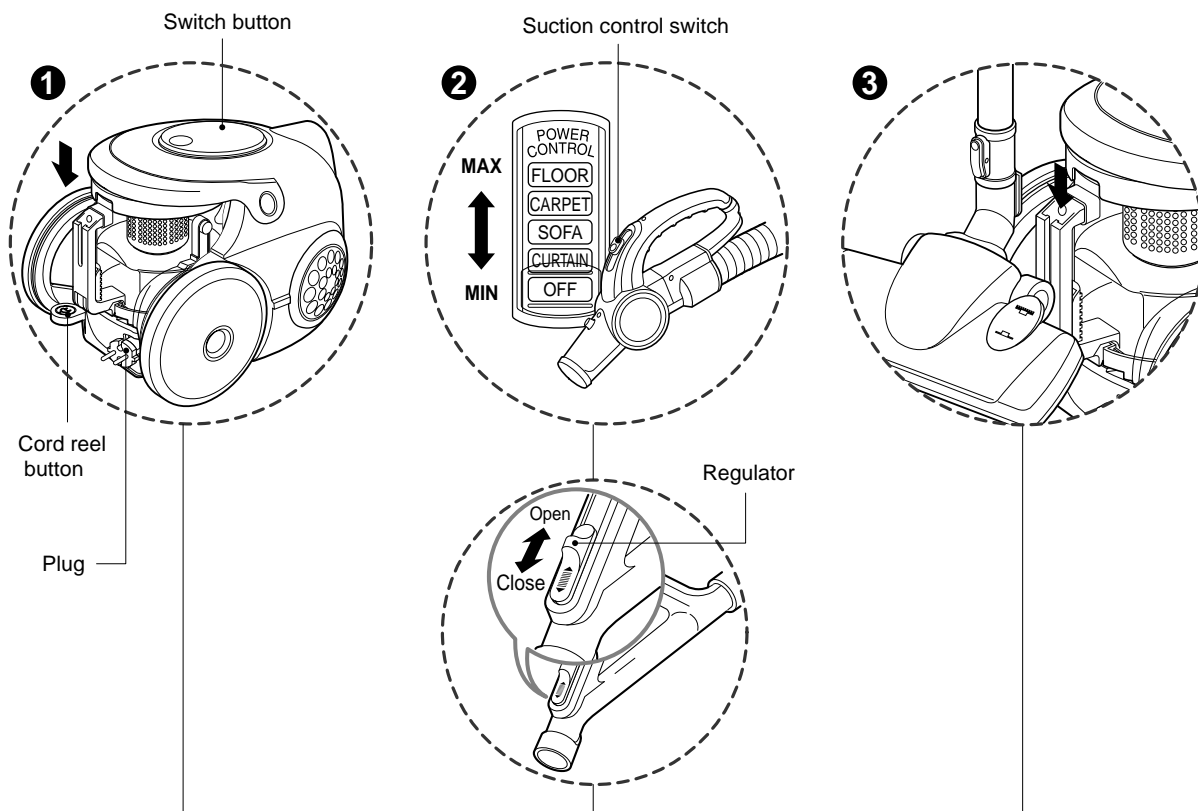


**The dust tank needs emptying when indicator is turned to red. Suction power may be weakened when insignificant dusts are sucked. In this case, clean the filter.**

- Turn off the vacuum cleaner and unplug it.
- Your vacuum cleaner is equipped with both a dust chamber and a motor filters. Press the button and pull the dust chamber forward. Remove the dust chamber cap. Clean the pleat-shaped and the circle-shaped filters.
- To reinstall the dust chamber, replace the dust chamber cap and push the dust chamber into the tank mount as far as it will go.

- Open the dust chamber cap.
- Wash both parts with softcloth.  
Gently rinse both parts under cold running water.

## How to Use operation



### ① How to Plug in and Use

- Pull out the power cord to the desired length and plug into the socket.
- Push the suction control switch of the hose handle in the direction of the position what you want. (depending on model)
- To stop it, push down the suction control switch in the direction of OFF. (depending on model)
- Press switch button to start the vacuum cleaner. (depending on model)
- To stop it, press the switch button again. (depending on model)
- Press the cord reel button to retract the power cord after use.

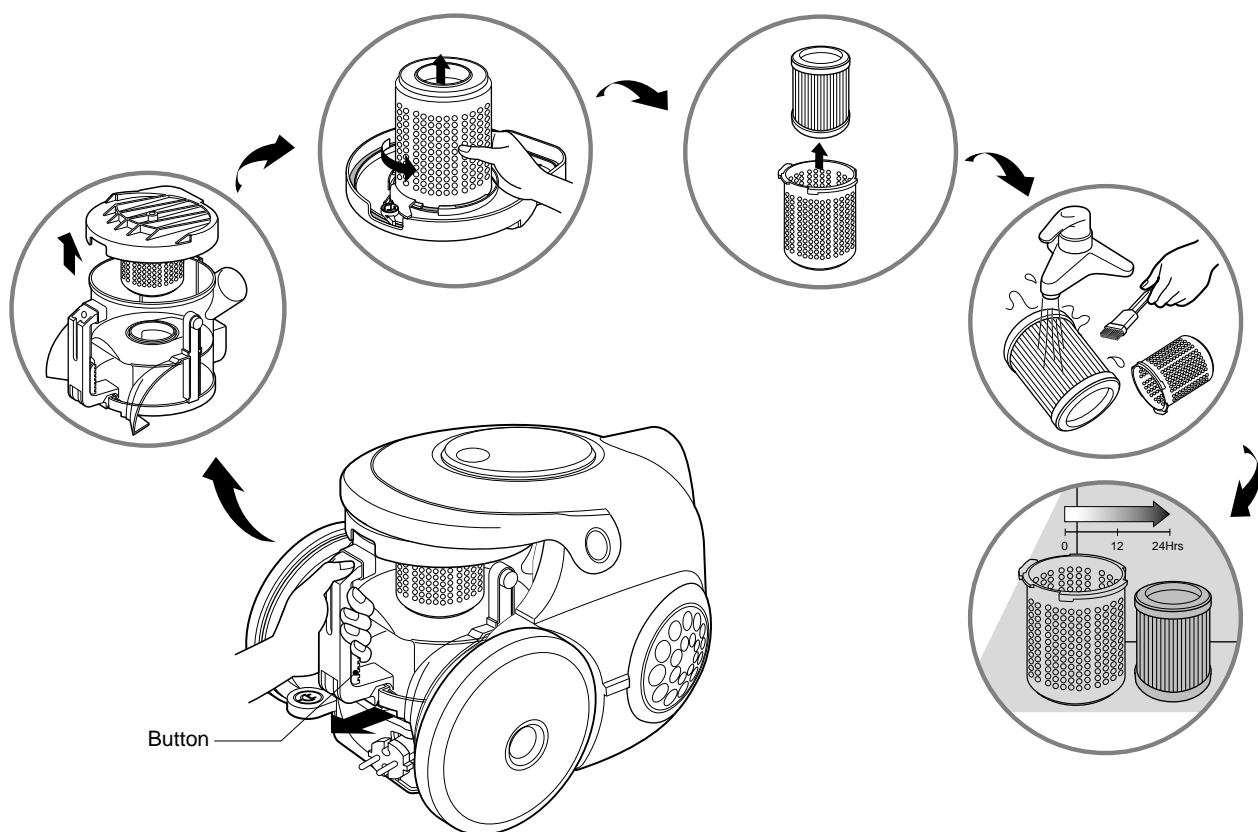
### ② Adjusting the Suction level (depending on model)

- Adjust suction with the suction control switch in the hose handle. (depending on model)
- The flexible hose handle has a manual air flow regulator which allows you to adjust the suction level briefly. (depending on model)

### ③ Park System

- To store after vacuuming and pause while vacuuming.
- For deposit after vacuuming, for example to move a small piece of furniture or a rug, use the Park system to support the flexible hose and cleaning head.
  - Slide the hook on the large cleaning head into the slot on the rear of the dust chamber.

## How to Use Cleaning the Filter



The reusable filters are situated under the dust chamber cap and you can use it permanently.

- Press the button and pull the dust chamber forward.
- Open the dust chamber cap.
- Remove the filters by rotating it counter-clockwise.
- **Clean the filters with the brush under cold running water.**
- **Allow the filters to dry in a shaded location for a day.**
- Make the dust chamber empty if dusts are filled to the maximum degree and then clean the filter.
- Especially, the extra motor filter is added for use while drying the motor filter out. ⑨

### **WARNING!**

Gently rinse both parts separately under a cold running water until the water runs clear. **Do not use detergent or a washing machine or dishwasher.**

Shake off excess water from the filter.

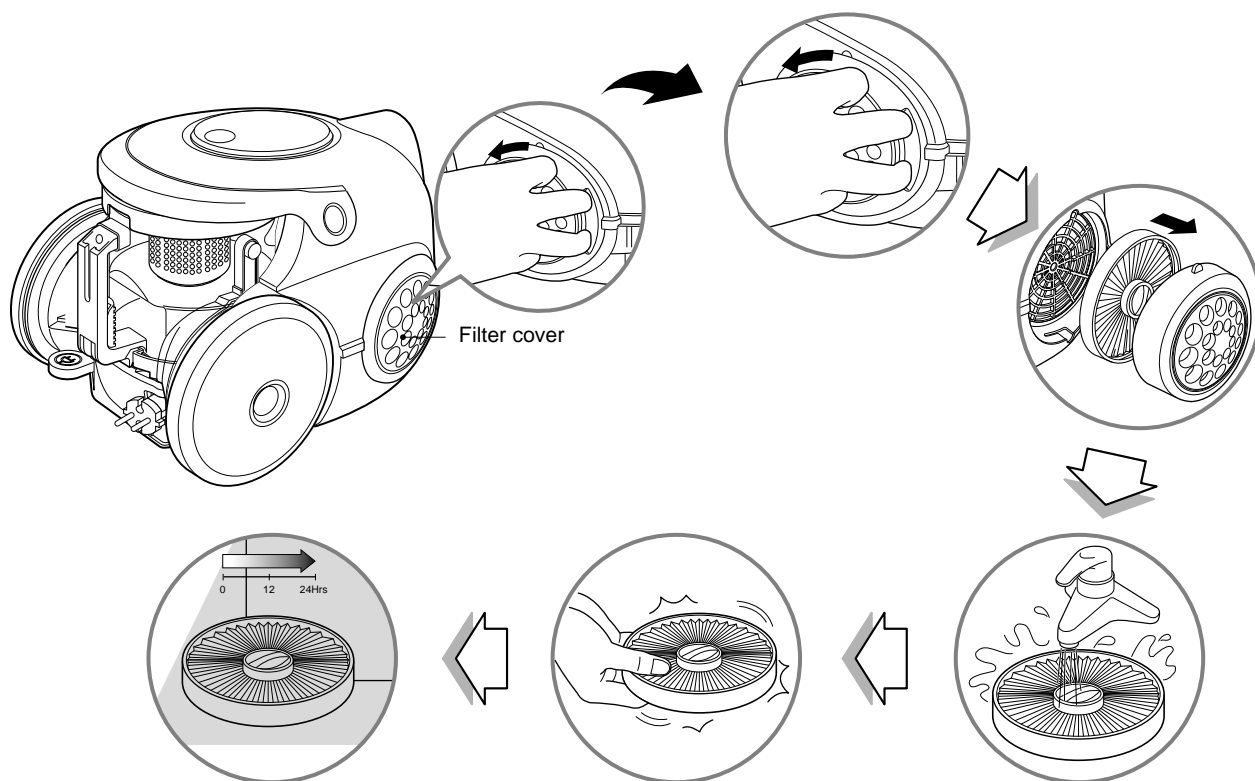
**Do not tumble/spindry, microwave or place in oven or on direct heat.** Ensure the filter is completely dry.

Re-assemble and place it back in your machine, filter frame.

**If the filter is damaged, do not place them in the machine. Please call the Helpline.**

Do not use the net-shaped filter separately.

## How to Use Cleaning the Exhaust Filter



- The exhaust filter is a washable reusable HEPA filter.
- To change the exhaust filter, remove the filter cover on the body by release hook.
- Pull out the exhaust filter.
- Clean it with cold, running water.  
Do Not use the brush
  - Using the brush will cause permanent damage and allow dust to bypass the filter.
- Allow exhaust filter to dry in a shaded location for a dry.
- The exhaust filter should be cleaned at least once a year.

## What to Do if Your Vacuum Cleaner Does Not Work

Check that the vacuum cleaner is correctly plugged in correctly and that the electrical socket is working.

## What to Do When Suction Performance Decreases

- Turn off the vacuum cleaner and unplug it.
- Check the telescopic tube, flexible hose and cleaning tool for blockages or obstructions.
- Check that the dust chamber is not full. Empty if necessary.
- Check that the motor filter light is not on. Clean the motor filter, if necessary.
- Check that the exhaust filter is not blocked. Clean the exhaust filter, if necessary.



# Note

