



## LG-T375 User Guide - English

Some of the contents in this manual may differ from your phone depending on the software of the phone or your service provider.

### Product Authentication program

Dear Customers,  
To protect all LG customers from counterfeit and grey market products and make sure that you receive official warranty service, LG is now running a product authentication program. To make sure your handset is a genuine product of LG, ONLY one SMS containing the IMEI No. of your purchased handset will be automatically sent to LG on the date of purchase. Once your phone is authenticated, you will receive the message "Your handset is a genuine LG product." The customer shall bear the cost of one SMS for the product authentication program. In return, you will receive one additional month of warranty for free. One additional month of warranty covers only mobile phone, not batteries and accessories. The IMEI No. sent to LG guarantees your handset to be free from manufacturing defects during the warranty period from the date of purchase without proof of purchase or warranty card.



P/N: MFL67481603(1.0) www.lg.com

## Phone Components



### Volume keys

- **When the screen is at the Home screen:** Ring tone and touch tone volume.
- **During a call:** Earpiece volume.
- **Down volume key:** Press and hold to activate/ deactivate Silent mode.

### Power/Lock key

- Short press to turn on/off the screen.
- Long press for power on/off.



### Handsfree or Stereo earphone connector

- 3 Touch **To** at the top of the screen to enter the recipients, then enter the number or touch **Q** to select a contact. You can even add multiple contacts.

- 4 Touch **SIM1** when ready.

**NOTE:** To send a message from SIM2 touch the forward arrow mark on **SIM1** icon.

**WARNING:** If an image, video, sound, New slide and so on is added to an SMS it will be automatically converted to an MMS and you will be charged accordingly.

## Using your touch screen

### Touch screen tips

- To select an item, touch the centre of the icon.
- Do not press too hard. The touch screen is sensitive enough to pick up a light, from touch.
- Use the tip of your finger to touch the option you require. Be careful not to touch any other keys.
- Whenever your LG-T375 is not in use, it will return to the lock screen.

### Control the touch screen

The controls on the LG-T375 touch screen change dynamically depending on the task you are carrying out.

### Opening Applications

To open any application, simply touch its icon.

### Scrolling

Drag from side to side to scroll. On some screens, such as the Logs list, you can also scroll up or down.

**TIP:** User can Copy a selected text from any editor and can paste the same in any other editor.

Ex: Go to Message Editor, type some text. Now Select the Text you want to copy by scrolling over the text. Now Place the cursor at a point you want to paste the text. Go to Option and Click on Paste, so that copied text will get Pasted.

**NOTE: Spam Message** - You can block the unwanted messages by giving Spam numbers or Spam words. Those messages will get stored in Spam Box Folder.

## Installing the SIM card and the handset battery

### Installing the SIM Card

When you subscribe to a cellular network, you are provided with a plug-in SIM card loaded with your subscription details, such as your PIN, any optional services available and many others.

### Important!

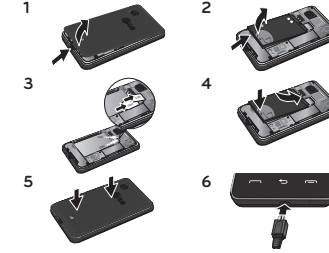
The plug-in SIM card and its contacts can be easily damaged by scratches or bending, so be careful when handling, inserting or removing the card. Keep all SIM cards out of the reach of small children.

### Illustrations

Always switch the device off and disconnect the charger before removing the battery.

- 1 Remove the back cover.
- 2 Lift battery away.
- 3 Insert the SIM card.
- 4 Insert the battery pack.

- 5 Attach the back cover.
- 6 Charge the battery.



## Calls

### Making a Call

- 1 Touch **Q** to open the keypad.
- 2 Key in the number using the keypad.
- 3 Touch **SIM1** to initiate the call.

**NOTE:** To make a call from SIM2 touch the forward arrow mark on **SIM1** icon.

**TIP!** To enter + for making an international call, press and hold "0".

Press the power key to lock the touch screen to prevent calls being made by mistake.

## Entering Text

You can choose your input method by tapping **Q** and **Input method**.

Touch **T9** to turn on T9 mode. This icon is only shown when you choose **Keypad** as the input method. Touch to **Q** change between numbers, symbols and text input. Use **Shift** key to change between capital or lowercase input.

**TIP:** You can send SMS to many contacts at a time. User can select/deselect all contacts for sending the message. Only 20 contacts can be marked and if user select Select all only first 20 contacts will be marked.

To send the SMS to a particular group of contacts select Group Option and select particular group.

## Making a call from your contacts

- 1 From the home screen touch **Q** to open the **Contacts**.
- 2 Tap the search field box on the top of the screen and enter the first few letters of the contact you would like to call using the keypad.
- 3 From the filtered list, touch the Call icon next to the contact you want to call. The call will use the default number if there is more than one number for that contact.
- 4 Or you can touch the contact name and select the number to use if there is more than one number for that contact. You can also touch **Q** to initiate the call to the default number.

### NOTE:

**Self call** - Self call imitates a real incoming call. Press "#\*#" on the Dialpad to make a self call. This doesn't charge any fee.

**NOTE: Excuse message** - During Incoming call alert, a preset Message can be sent as SMS on clicking Excuse msg.

**NOTE: SMS Sorting** - Inbox Messages can be sorted with the given sorting options for an easy access of messages. (**Date, Sender, Read and Unread**)

## Setting up your email

Touch **E-mail** from screen 2.

If the email account is not set up, start the email set up wizard and finish it. You can check and edit settings also you can check the additional settings that were filled in automatically when you created the account.

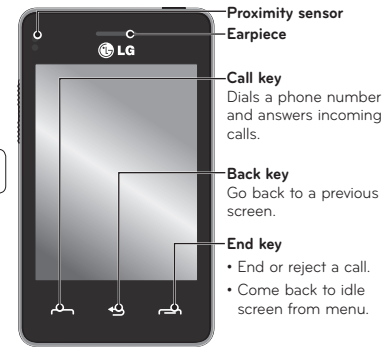
## Installing the SIM card and the handset battery

### Installing a Memory Card

Remove the back cover of your phone. Push the memory card inside with the gold contact facing downwards. To remove the memory card, gently pull it outside.

**NOTE:** A memory card is an optional accessory.

## Phone Components



- 2 Choose whether to save the contact to your **Internal memory, SIM1 or SIM2**.
- 3 Enter your first and last name.
- 4 You can enter up to five different numbers per contact.
- 5 Add an email addresses. You can enter up to two different email addresses per contact.
- 6 Assign the contact to one or more groups.
- 7 Touch **Save** to save the contact.

## Messaging

Your LG-T375 combines SMS and MMS into one intuitive and easy-to-use menu.

### Sending a message

- 1 Touch **Messages** in menu and touch **Write message** to begin composing a new message.
- 2 Touch **Insert** to add an image, video, sound, template and so on.

## Answering and rejecting a call

When your phone rings, press **Q** key to answer the call.

To mute the ringing, touch on Silent tab in alerting screen. This is useful if you forgot to change your profile to Silent for a meeting. Touch on Reject tab to reject an incoming call in alerting screen.

## Contacts

### Searching for a contact

- 1 Touch **Contacts**.
- 2 You see a list of contacts. Typing in the first letter of a contact's name in the Search field will jump the menu to that alphabetical area of the list.

### Adding a new contact

- 1 Touch **Contacts** and touch **Add**.

## Camera

### Taking a quick photo

- 1 Touch **Camera** menu.
- 2 When the camera has focused on your subject, touch the **Q** on the right-center of the screen to take a photo.

**TIP:** To switch to the camera mode or video mode, slide up/down the camera or video icon on the centre-right of the viewfinder.

### After taking a photo

Your captured photo will appear on the screen.

The following options are available.

Touch **Q**

**Upload** - Touch to upload the photo.

**Send Via** - Touch to send the photo as a **Message, Email** or via **Bluetooth**.

**Set as** - Touch to set as **Homescreen wallpaper, Lockscreen wallpaper, Contacts image**.

**Edit** - Touch to edit the photo.

**Q** Touch to delete the image.

**Q** Touch to take another photo immediately.

**Q** Touch to view a gallery of your saved photos.

### Using the advanced settings

From the viewfinder, touch **Q** to open all advanced settings options.

After selecting the option, touch the **OK** button.

## Using your calculator

- 1 Touch **Calculator**.
- 2 Touch the number keys to enter numbers.

### Converting a unit

- 1 Touch **Unit converter**.
- 2 Choose whether you want to convert Currency, Area, Length, Weight, Temperature, Volume or Velocity.
- 3 Then select the unit and enter the value you would like to convert from.

## PC Suite

You can synchronise your PC with your phone to make sure all your important details and dates match. You can also backup your files to put your mind at ease.

**NOTE:** Install PC Suite using CD provided and follow the Installation Guide.

## Video camera

### Making a quick video

To switch to the camera mode or video mode, slide up/down the camera or video icon on the right centre of the viewfinder.

- 1 Holding the phone horizontally, point the lens towards the subject of the video.
- 2 Press the red dot **Q**.
- 3 **REC** will appear at the bottom of the viewfinder with a timer at the bottom showing the length of the video.
- 4 To pause the video, touch **Q** and resume by selecting **Q**.
- 5 Touch **Q** on screen to stop video recording.

### After making a video

A still image representing your captured video will appear on the screen. The name of the video is displayed at the bottom of the screen.

The following options are available.

**Q** Touch to play the video.

Touch **Q** to

**Send Via** - To send the video as a **Message, Email** or via **Bluetooth**.

**Q** Touch to delete the video you have just made and confirm by touching **Yes**. The viewfinder will reappear.

**Q** Touch to shoot another video immediately. Your current video will be saved.

**Q** Touch to view a gallery of saved videos and images.

## Using the advanced settings

From the viewfinder, touch **Q** to open all advanced settings options. You can change the video camera setting after selecting the option, touch the **OK** button.

## Music

To access the music player, touch **Music**. From here, you can access a number of folders:

**Recently played** - Plays the songs you have played recently.

**All tracks** - Contains the songs you have on your phone except the pre-loaded default music.

**Artists** - Browse through your music collection by artist.

**Albums** - Browse through your music collection by album.

**Genres** - Browse through your music collection by genre.

**Playlists** - Contains all the playlists you have created.

**Shuffle tracks** - Play your tracks in a random order.

## Managing files

You can store multimedia files in your phone's memory so you have easy access to all your images, sounds, videos, documents and other content. You can also save your files to a memory card. Using a memory card allows you to free up space in your phone's memory.

By touching **My stuff**, you can open a list of the folders that store all your multimedia files.

## Application

### Adding an event to your calendar

- 1 Touch **Calendar**.
- 2 Select the date you would like to add an event to.
- 3 Touch **Add**.

### Setting your alarm

- 1 Touch **Alarms**.
- 2 Touch **Add**, then you can set and save your alarm in this menu.

### Voice recorder

Use your **voice recorder** to record voice memos or other audio files.

